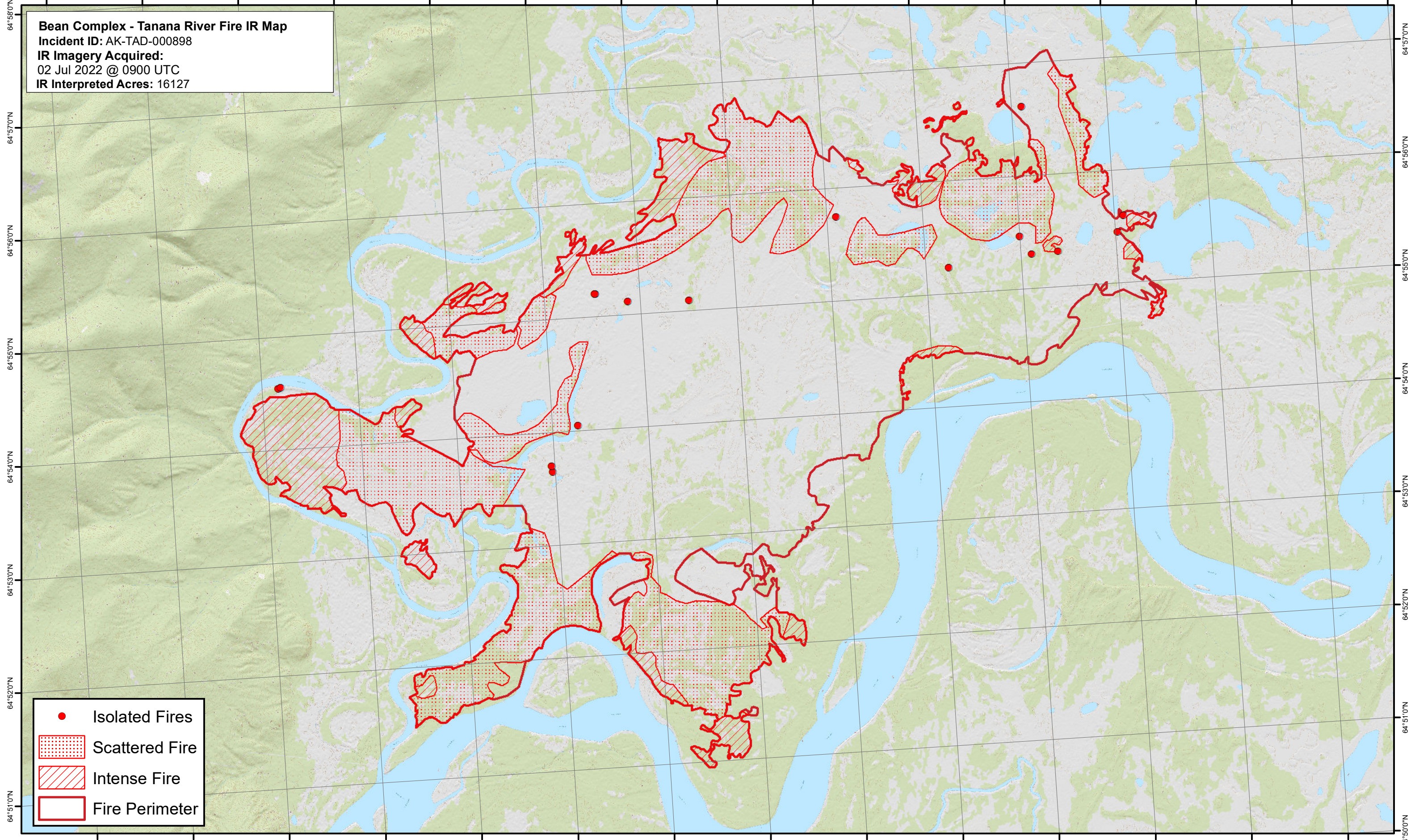


149°56'0"W 149°54'0"W 149°52'0"W 149°50'0"W 149°48'0"W 149°46'0"W 149°44'0"W 149°42'0"W 149°40'0"W 149°38'0"W 149°36'0"W 149°34'0"W 149°32'0"W 149°30'0"W

Bean Complex - Tanana River Fire IR Map
Incident ID: AK-TAD-000898
IR Imagery Acquired:
02 Jul 2022 @ 0900 UTC
IR Interpreted Acres: 16127



- Isolated Fires
- ▨ Scattered Fire
- ▨ Intense Fire
- ▭ Fire Perimeter

0 0.5 1 2 3 4 Miles