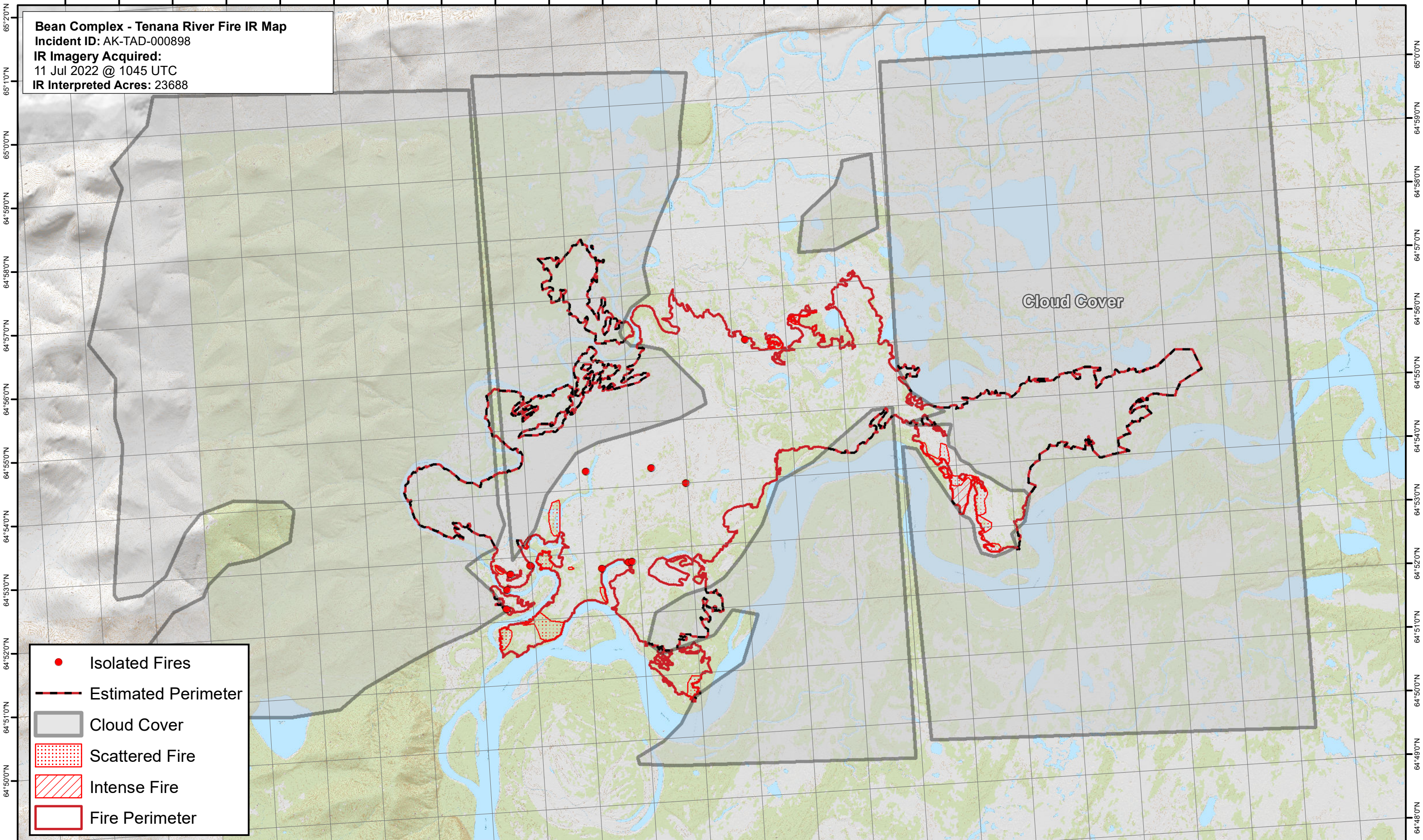




150°40'W 150°20'W 150°00'W 149°58'0"W 149°56'0"W 149°54'0"W 149°52'0"W 149°50'0"W 149°48'0"W 149°46'0"W 149°44'0"W 149°42'0"W 149°40'0"W 149°38'0"W 149°36'0"W 149°34'0"W 149°32'0"W 149°30'0"W 149°28'0"W 149°26'0"W 149°24'0"W 149°22'0"W 149°20'0"W 149°18'0"W 149°16'0"W

Bean Complex - Tenana River Fire IR Map
Incident ID: AK-TAD-000898
IR Imagery Acquired:
11 Jul 2022 @ 1045 UTC
IR Interpreted Acres: 23688



- Isolated Fires
- Estimated Perimeter
- Cloud Cover
- Scattered Fire
- Intense Fire
- Fire Perimeter

Cloud Cover

150°6'0"W 150°4'0"W 150°2'0"W 150°0'0"W 149°58'0"W 149°56'0"W 149°54'0"W 149°52'0"W 149°50'0"W 149°48'0"W 149°46'0"W 149°44'0"W 149°42'0"W 149°40'0"W 149°38'0"W 149°36'0"W 149°34'0"W 149°32'0"W 149°30'0"W 149°28'0"W 149°26'0"W 149°24'0"W 149°22'0"W 149°20'0"W 149°18'0"W

0 0.5 1 2 3 4 Miles

Map date: 7/11/2022

Map created with ; Projection: NAD 1983 2011 Alaska Albers