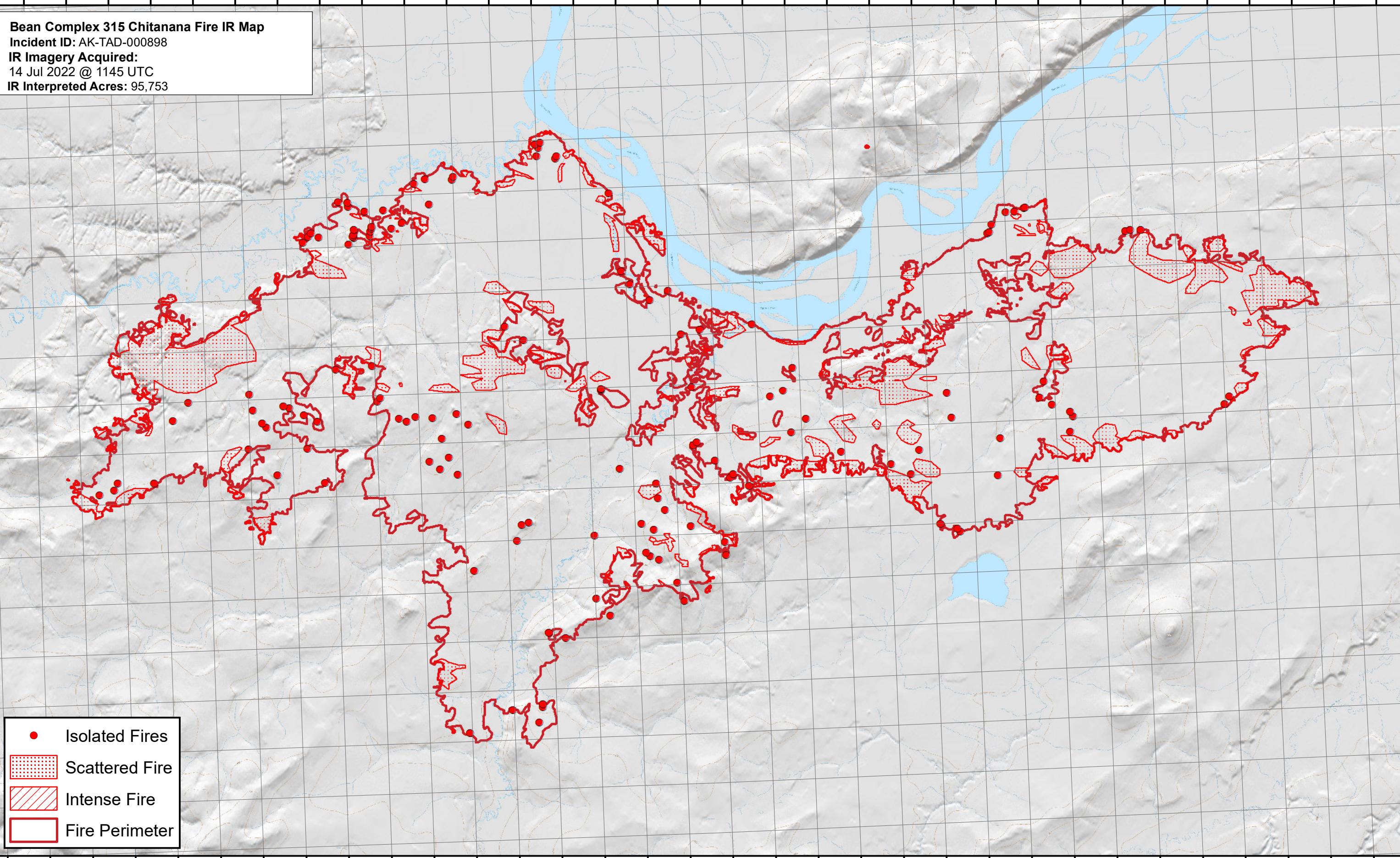




151°56'0"W 151°54'0"W 151°52'0"W 151°50'0"W 151°48'0"W 151°46'0"W 151°44'0"W 151°42'0"W 151°40'0"W 151°38'0"W 151°36'0"W 151°34'0"W 151°32'0"W 151°30'0"W 151°28'0"W 151°26'0"W 151°24'0"W 151°22'0"W 151°20'0"W 151°18'0"W 151°16'0"W 151°14'0"W 151°12'0"W 151°10'0"W 151°8'0"W 151°6'0"W 151°4'0"W 151°2'0"W 151°0'0"W 150°58'0"W 150°56'0"W 150°54'0"W 150°52'0"W

Bean Complex 315 Chitanana Fire IR Map
Incident ID: AK-TAD-000898
IR Imagery Acquired:
14 Jul 2022 @ 1145 UTC
IR Interpreted Acres: 95,753



- Isolated Fires
- Scattered Fire
- Intense Fire
- Fire Perimeter

151°58'0"W 151°56'0"W 151°54'0"W 151°52'0"W 151°50'0"W 151°48'0"W 151°46'0"W 151°44'0"W 151°42'0"W 151°40'0"W 151°38'0"W 151°36'0"W 151°34'0"W 151°32'0"W 151°30'0"W 151°28'0"W 151°26'0"W 151°24'0"W 151°22'0"W 151°20'0"W 151°18'0"W 151°16'0"W 151°14'0"W 151°12'0"W 151°10'0"W 151°8'0"W 151°6'0"W 151°4'0"W 151°2'0"W 151°0'0"W 150°58'0"W 150°56'0"W 150°54'0"W 150°52'0"W

0 0.5 1 2 3 4 Miles

Map created with USGS 63K Quads (Alaska); Projection: NAD 1983 2011 Alaska Albers
Map date: 7/14/2022