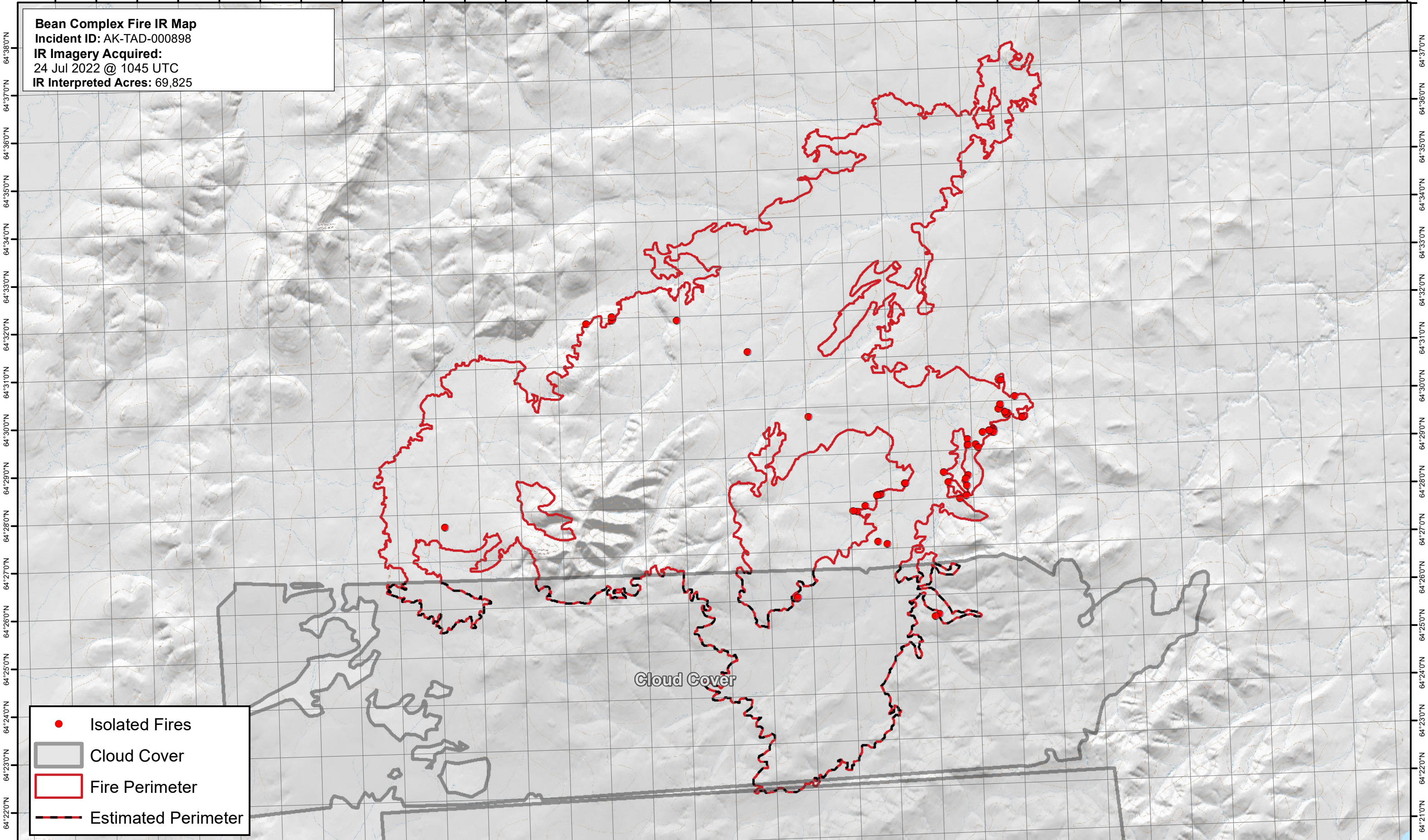




152°24'0"W 152°22'0"W 152°20'0"W 152°18'0"W 152°16'0"W 152°14'0"W 152°12'0"W 152°10'0"W 152°8'0"W 152°6'0"W 152°4'0"W 152°2'0"W 152°0'0"W 151°58'0"W 151°56'0"W 151°54'0"W 151°52'0"W 151°50'0"W 151°48'0"W 151°46'0"W 151°44'0"W 151°42'0"W 151°40'0"W 151°38'0"W 151°36'0"W 151°34'0"W 151°32'0"W 151°30'0"W 151°28'0"W 151°26'0"W 151°24'0"W 151°22'0"W 151°20'0"W 151°18'0"W

Bean Complex Fire IR Map
Incident ID: AK-TAD-000898
IR Imagery Acquired:
24 Jul 2022 @ 1045 UTC
IR Interpreted Acres: 69,825



Cloud Cover

- Isolated Fires
- Cloud Cover
- Fire Perimeter
- Estimated Perimeter

152°26'0"W 152°24'0"W 152°22'0"W 152°20'0"W 152°18'0"W 152°16'0"W 152°14'0"W 152°12'0"W 152°10'0"W 152°8'0"W 152°6'0"W 152°4'0"W 152°2'0"W 152°0'0"W 151°58'0"W 151°56'0"W 151°54'0"W 151°52'0"W 151°50'0"W 151°48'0"W 151°46'0"W 151°44'0"W 151°42'0"W 151°40'0"W 151°38'0"W 151°36'0"W 151°34'0"W 151°32'0"W 151°30'0"W 151°28'0"W 151°26'0"W 151°24'0"W 151°22'0"W 151°20'0"W

0 0.5 1 2 3 4 Miles

Map date: 7/24/2022

Map created with ; Projection: NAD 1983 2011 Alaska Albers