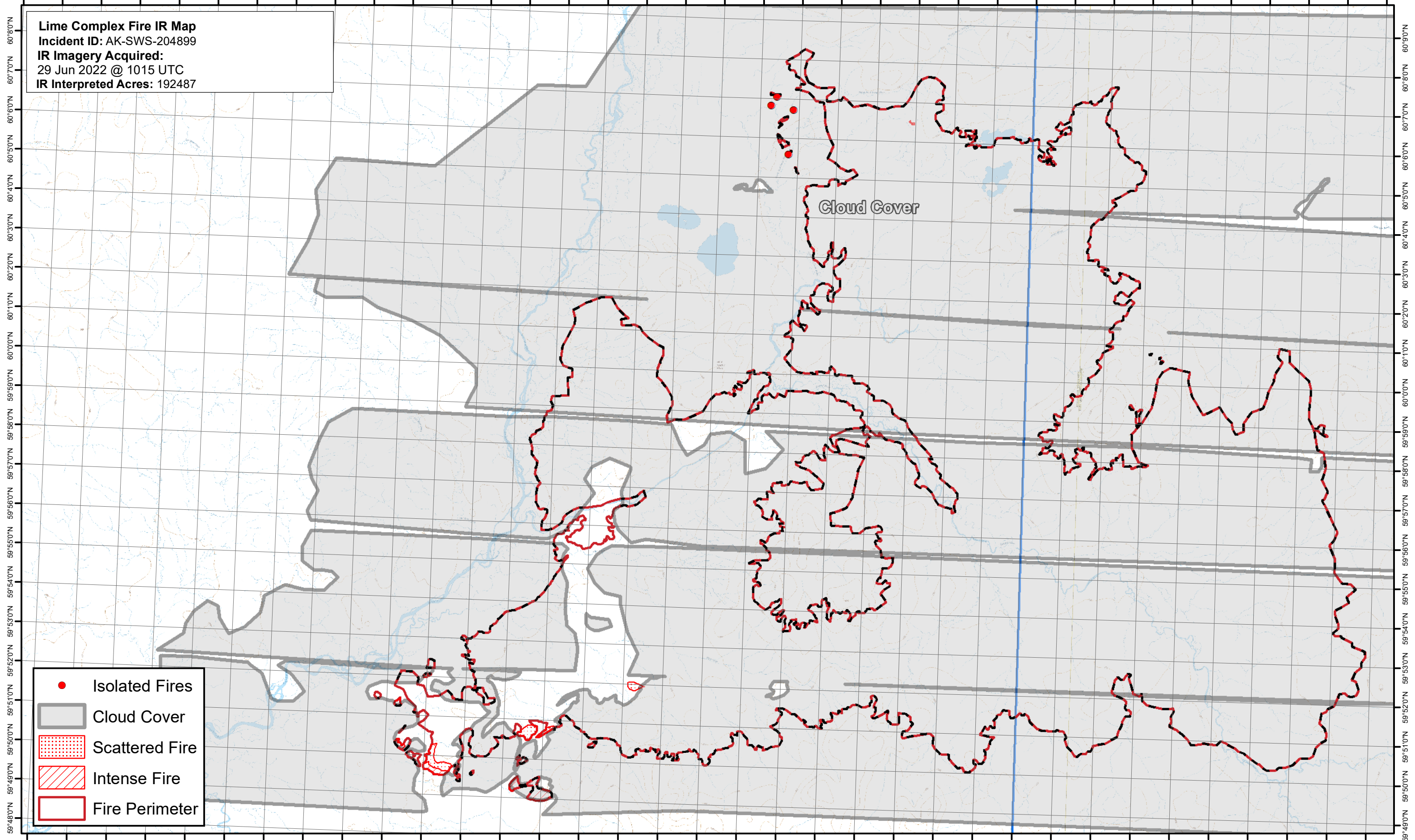




156°50'0"W 156°46'0"W 156°42'0"W 156°38'0"W 156°34'0"W 156°30'0"W 156°26'0"W 156°22'0"W 156°18'0"W 156°14'0"W 156°10'0"W 156°8'0"W 156°6'0"W 156°4'0"W 156°2'0"W 156°0'0"W 155°58'0"W 155°54'0"W 155°50'0"W 155°46'0"W 155°42'0"W

**Lime Complex Fire IR Map**  
Incident ID: AK-SWS-204899  
IR Imagery Acquired:  
29 Jun 2022 @ 1015 UTC  
IR Interpreted Acres: 192487



- Isolated Fires
- Cloud Cover
- ▤ Scattered Fire
- ▨ Intense Fire
- ▭ Fire Perimeter

0 0.5 1 2 3 4 Miles