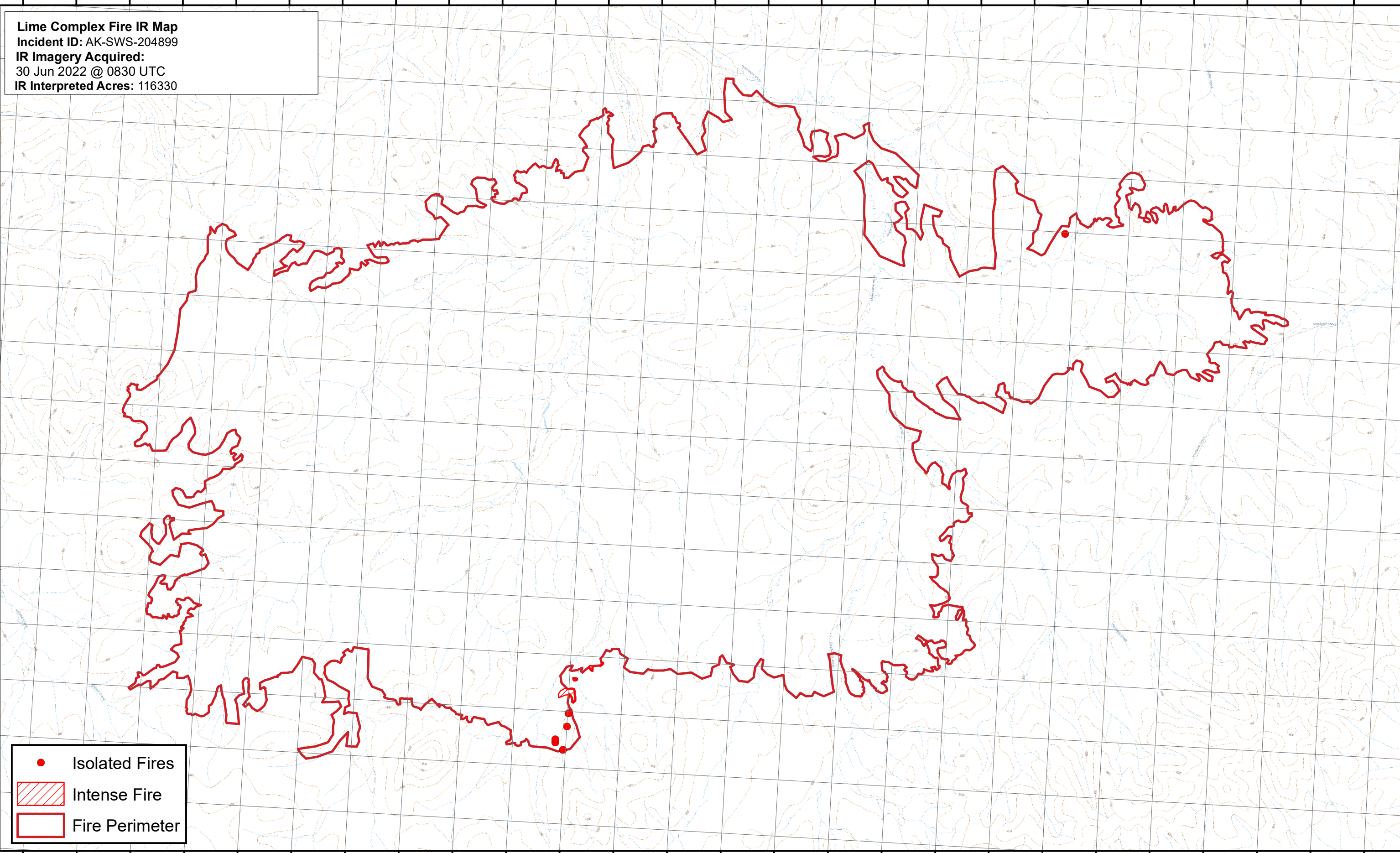




158°14'0"W 158°12'0"W 158°10'0"W 158°8'0"W 158°6'0"W 158°4'0"W 158°2'0"W 158°0'0"W 157°58'0"W 157°56'0"W 157°54'0"W 157°52'0"W 157°50'0"W 157°48'0"W 157°46'0"W 157°44'0"W 157°42'0"W 157°40'0"W 157°38'0"W 157°36'0"W 157°34'0"W 157°32'0"W 157°30'0"W 157°28'0"W 157°26'0"W 157°24'0"W

Lime Complex Fire IR Map
Incident ID: AK-SWS-204899
IR Imagery Acquired:
30 Jun 2022 @ 0830 UTC
IR Interpreted Acres: 116330



● Isolated Fires
▨ Intense Fire
▭ Fire Perimeter

158°12'0"W 158°10'0"W 158°8'0"W 158°6'0"W 158°4'0"W 158°2'0"W 158°0'0"W 157°58'0"W 157°56'0"W 157°54'0"W 157°52'0"W 157°50'0"W 157°48'0"W 157°46'0"W 157°44'0"W 157°42'0"W 157°40'0"W 157°38'0"W 157°36'0"W 157°34'0"W 157°32'0"W 157°30'0"W 157°28'0"W 157°26'0"W 157°24'0"W 157°22'0"W

0 0.5 1 2 3 4 Miles

Map date: 6/30/2022

Map created with USGS 63K Quads (Alaska); Projection: NAD 1983 2011 Alaska Albers