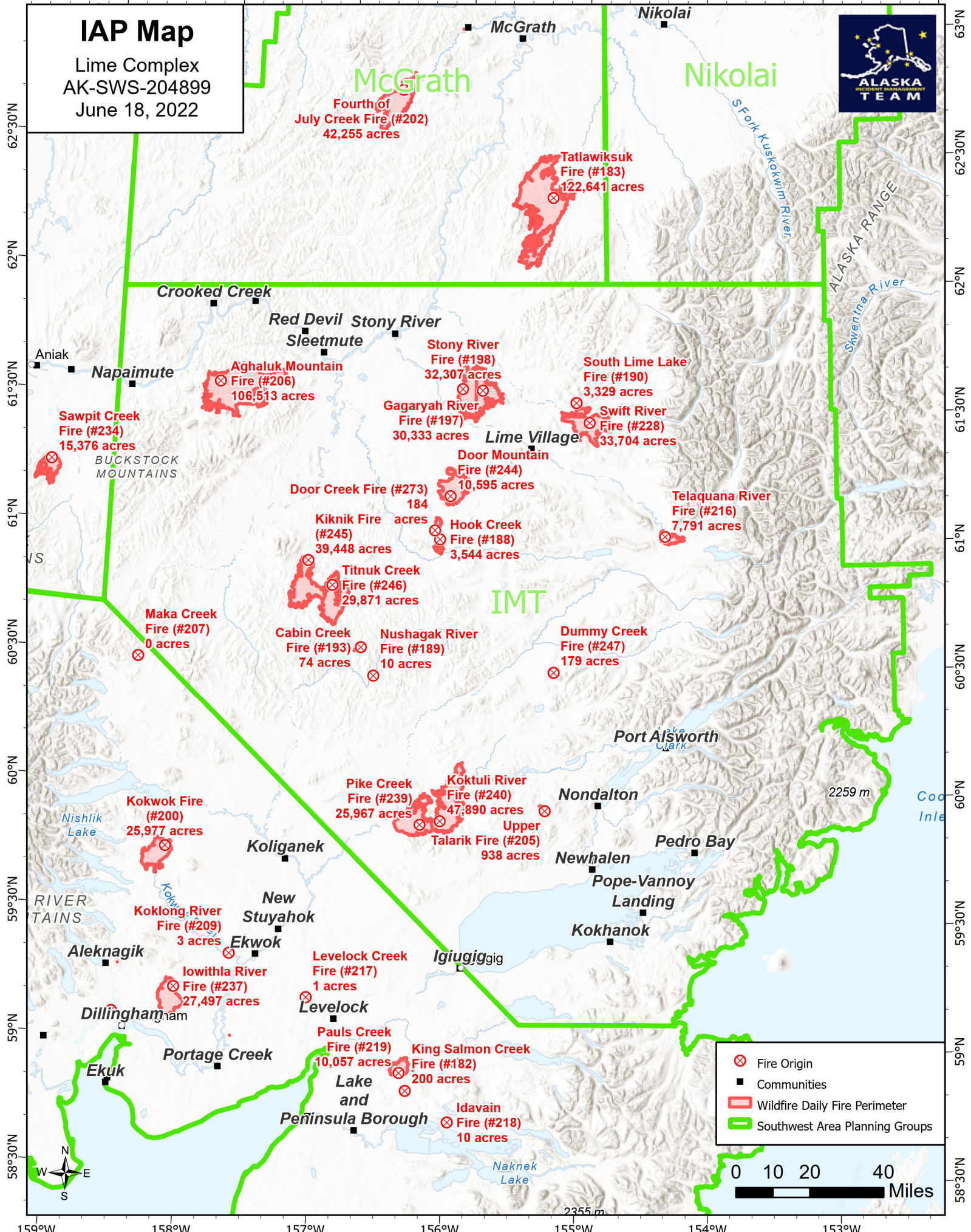


159°W 158°W 157°W 156°W 155°W 154°W 153°W 152°W

# IAP Map

Lime Complex  
AK-SWS-204899  
June 18, 2022



Fourth of July Creek Fire (#202)  
42,255 acres

Tatlawiksuk Fire (#183)  
122,641 acres

Aghaluk Mountain Fire (#206)  
106,513 acres

Stony River Fire (#198)  
32,307 acres

South Lime Lake Fire (#190)  
3,329 acres

Sawpit Creek Fire (#234)  
15,376 acres

Gagaryah River Fire (#197)  
30,333 acres

Swift River Fire (#228)  
33,704 acres

Door Mountain Fire (#244)  
10,595 acres

Telaquana River Fire (#216)  
7,791 acres

Door Creek Fire (#273)  
184 acres

Hook Creek Fire (#188)  
3,544 acres

Kiknik Fire (#245)  
39,448 acres

Titnuk Creek Fire (#246)  
29,871 acres

Maka Creek Fire (#207)  
0 acres

Cabin Creek Fire (#193)  
74 acres

Nushagak River Fire (#189)  
10 acres

Dummy Creek Fire (#247)  
179 acres

Kokwok Fire (#200)  
25,977 acres

Pike Creek Fire (#239)  
25,967 acres

Koktuli River Fire (#240)  
47,890 acres

Upper Talarik Fire (#205)  
938 acres

Koklong River Fire (#209)  
3 acres

Levelock Creek Fire (#217)  
1 acres

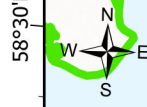
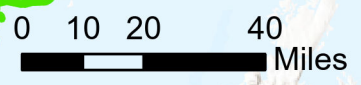
Iowithla River Fire (#237)  
27,497 acres

Pauls Creek Fire (#219)  
10,057 acres

King Salmon Creek Fire (#182)  
200 acres

Idavain Fire (#218)  
10 acres

- ⊗ Fire Origin
- Communities
- ▭ Wildfire Daily Fire Perimeter
- ▭ Southwest Area Planning Groups



159°W 158°W 157°W 156°W 155°W 154°W 153°W 152°W

63°N  
62°30'N  
62°N  
61°30'N  
61°N  
60°30'N  
60°N  
59°30'N  
59°N  
58°30'N

63°N  
62°30'N  
62°N  
61°30'N  
61°N  
60°30'N  
60°N  
59°30'N  
59°N  
58°30'N