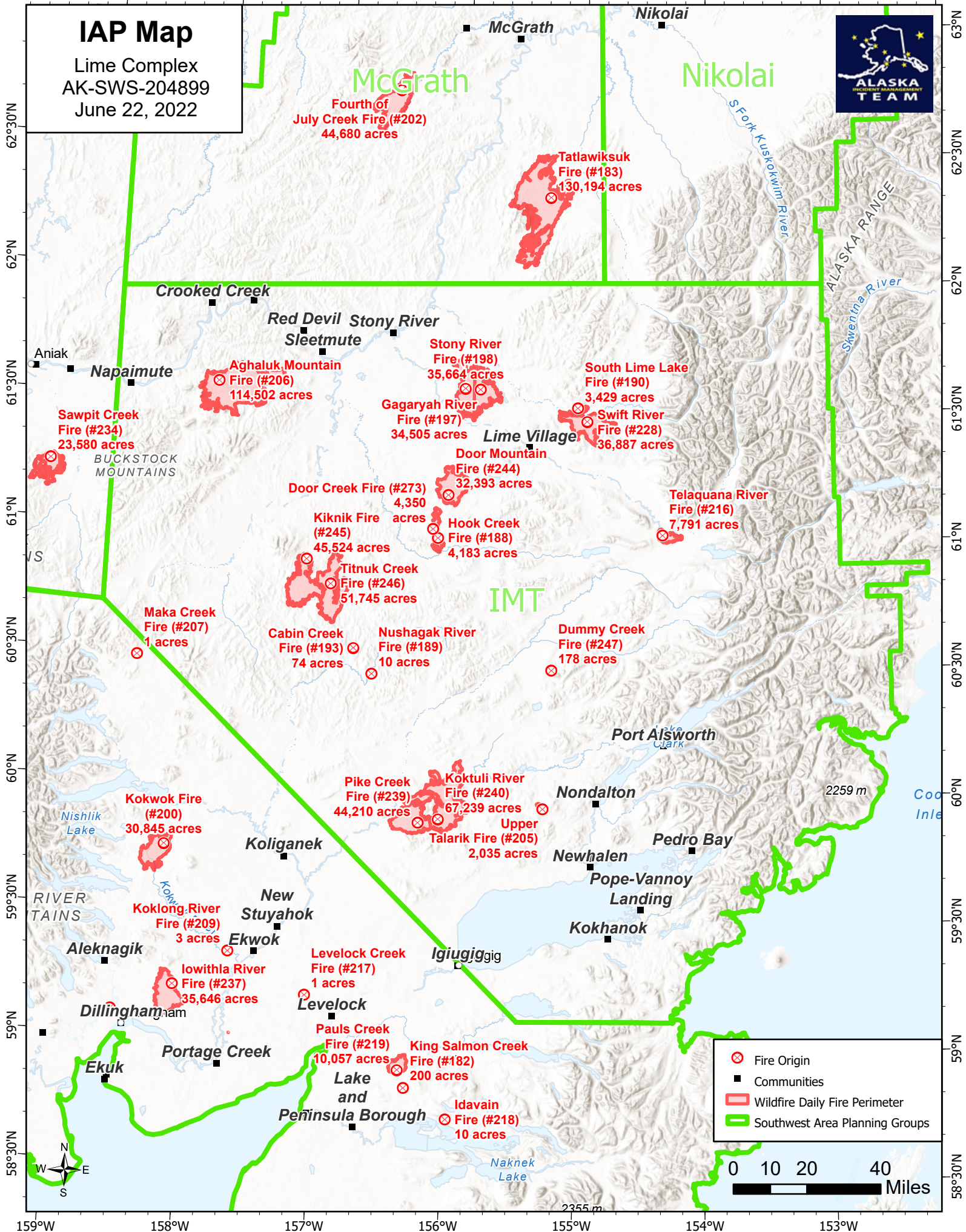


159°W 158°W 157°W 156°W 155°W 154°W 153°W 152°W

IAP Map

Lime Complex
AK-SWS-204899
June 22, 2022



Fourth of July Creek Fire (#202)
44,680 acres

Tatlawiksuk Fire (#183)
130,194 acres

Aghaluk Mountain Fire (#206)
114,502 acres

Stony River Fire (#198)
35,664 acres

South Lime Lake Fire (#190)
3,429 acres

Sawpit Creek Fire (#234)
23,580 acres

Gagaryah River Fire (#197)
34,505 acres

Swift River Fire (#228)
36,887 acres

Door Creek Fire (#273)
4,350 acres

Door Mountain Fire (#244)
32,393 acres

Telaquana River Fire (#216)
7,791 acres

Kiknik Fire (#245)
45,524 acres

Hook Creek Fire (#188)
4,183 acres

Maka Creek Fire (#207)
1 acres

Cabin Creek Fire (#193)
74 acres

Nushagak River Fire (#189)
10 acres

Dummy Creek Fire (#247)
178 acres

Kokwok Fire (#200)
30,845 acres

Pike Creek Fire (#239)
44,210 acres

Koktuli River Fire (#240)
67,239 acres

Upper Talarik Fire (#205)
2,035 acres

Koklong River Fire (#209)
3 acres

Iowithla River Fire (#237)
35,646 acres

Levelock Creek Fire (#217)
1 acres

Pauls Creek Fire (#219)
10,057 acres

King Salmon Creek Fire (#182)
200 acres

Idavain Fire (#218)
10 acres

- ⊗ Fire Origin
- Communities
- ▭ Wildfire Daily Fire Perimeter
- ▭ Southwest Area Planning Groups



159°W 158°W 157°W 156°W 155°W 154°W 153°W 152°W

58°N 59°N 59°30'N 60°N 60°30'N 61°N 61°30'N 62°N 62°30'N 63°N