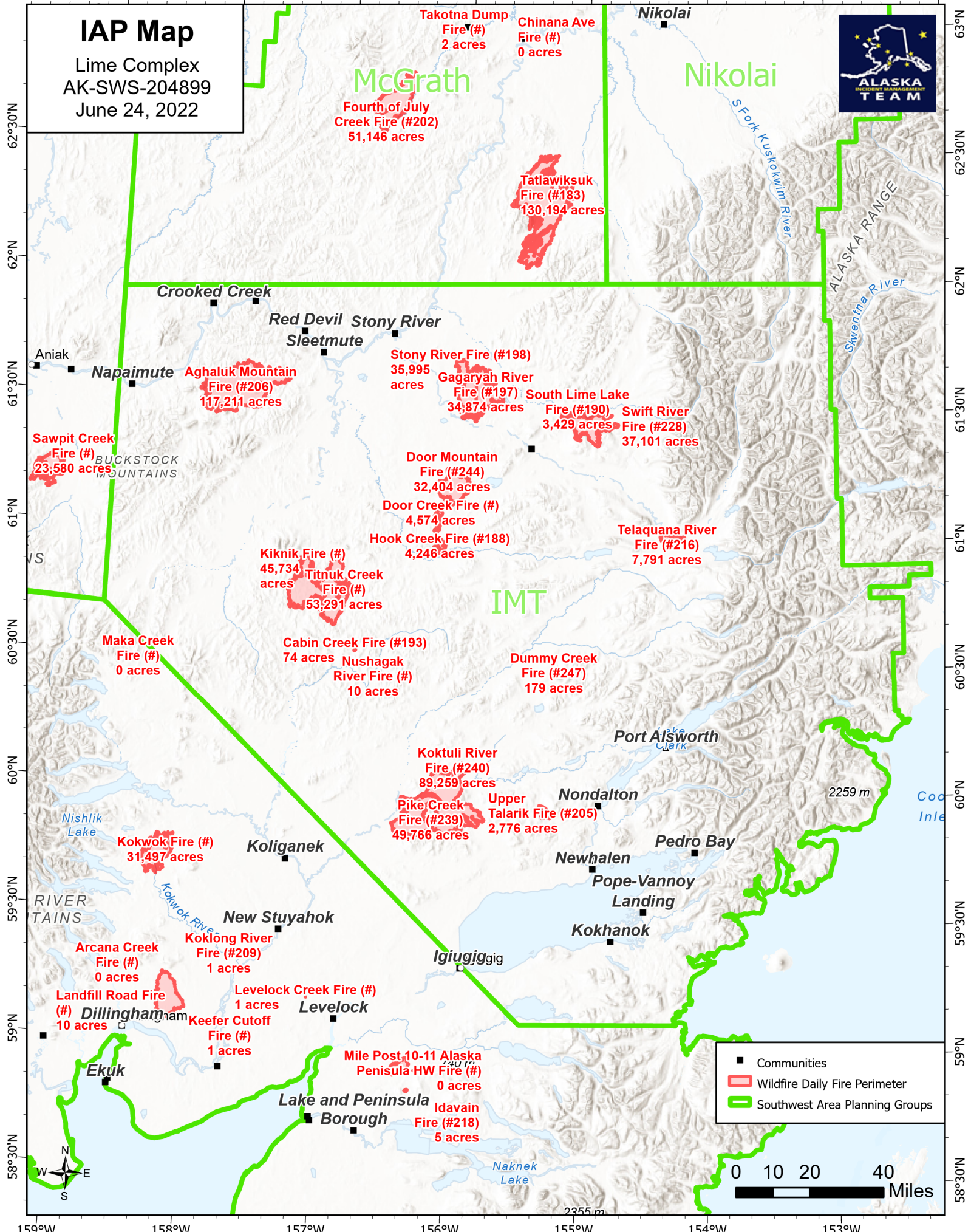


159°W 158°W 157°W 156°W 155°W 154°W 153°W 152°W

IAP Map

Lime Complex
AK-SWS-204899
June 24, 2022



McGrath

Nikolai

IMT

Napaimute

Crooked Creek

Red Devil Stony River
Sleetmute

Aghaluk Mountain
Fire (#206)
117,211 acres

Stony River Fire (#198)
35,995 acres
Gagaryah River
Fire (#197)
34,874 acres

South Lime Lake
Fire (#190)
3,429 acres
Swift River
Fire (#228)
37,101 acres

Sawpit Creek
Fire (#)
23,580 acres

Door Mountain
Fire (#244)
32,404 acres
Door Creek Fire (#)
4,574 acres

Hook Creek Fire (#188)
4,246 acres

Telaquana River
Fire (#216)
7,791 acres

Kiknik Fire (#)
45,734 acres
Titnuk Creek
Fire (#)
53,291 acres

Maka Creek
Fire (#)
0 acres

Cabin Creek Fire (#193)
74 acres
Nushagak
River Fire (#)
10 acres

Dummy Creek
Fire (#247)
179 acres

Nishlik Lake

Kokwok Fire (#)
31,497 acres

Koliganek

Koktuli River
Fire (#240)
89,259 acres

Pike Creek
Fire (#239)
49,766 acres

Upper
Talarik Fire (#205)
2,776 acres

Nondalton

Newhalen

Pedro Bay

RIVER
TAINS

New Stuyahok

Koklong River
Fire (#209)
1 acres

Levelock Creek Fire (#)
1 acres
Keefer Cutoff
Fire (#)
1 acres

Levelock

Landfill Road Fire
(#) Dillingham
10 acres

Ekuk

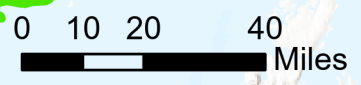
Mile Post 10-11 Alaska
Peninsula-HW Fire (#)
0 acres

Lake and Peninsula
Borough

Idavain
Fire (#218)
5 acres



- Communities
- ▭ Wildfire Daily Fire Perimeter
- ▭ Southwest Area Planning Groups



159°W 158°W 157°W 156°W 155°W 154°W 153°W 152°W

62°30'N
62°N
61°30'N
61°N
60°30'N
60°N
59°30'N
59°N
58°30'N

63°N
62°30'N
62°N
61°30'N
61°N
60°30'N
60°N
59°30'N
59°N
58°30'N