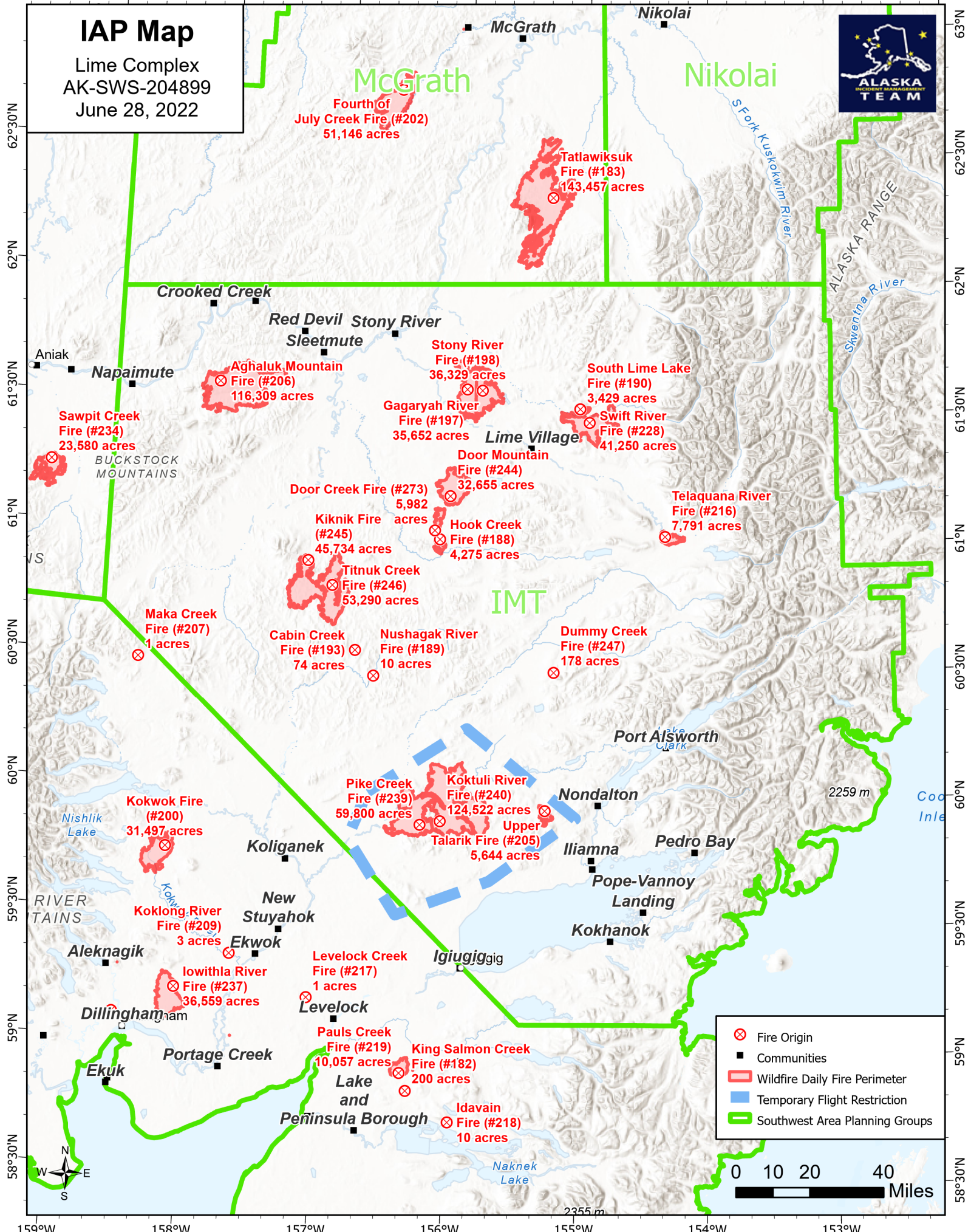


159°W 158°W 157°W 156°W 155°W 154°W 153°W 152°W

IAP Map

Lime Complex
AK-SWS-204899
June 28, 2022



McGrath Nikolai

Fourth of July Creek Fire (#202)
51,146 acres

Tatlawiksuk Fire (#183)
143,457 acres

Crooked Creek

Red Devil Stony River

Aghaluk Mountain Fire (#206)
116,309 acres

Stony River Fire (#198)
36,329 acres

South Lime Lake Fire (#190)
3,429 acres

Sawpit Creek Fire (#234)
23,580 acres

Gagaryah River Fire (#197)
35,652 acres

Swift River Fire (#228)
41,250 acres

BUCKSTOCK MOUNTAINS

Door Creek Fire (#273)
5,982 acres

Door Mountain Fire (#244)
32,655 acres

Telaquana River Fire (#216)
7,791 acres

Kiknik Fire (#245)
45,734 acres

Hook Creek Fire (#188)
4,275 acres

Titnuk Creek Fire (#246)
53,290 acres

Maka Creek Fire (#207)
1 acres

Cabin Creek Fire (#193)
74 acres

Nushagak River Fire (#189)
10 acres

Dummy Creek Fire (#247)
178 acres

IMT

Kokwok Fire (#200)
31,497 acres

Pike Creek Fire (#239)
59,800 acres

Koktuli River Fire (#240)
124,522 acres

Upper Talarik Fire (#205)
5,644 acres

Port Alsworth

Nondalton

Iliamna

Pope-Vannoy Landing

Kokhanok

Koklong River Fire (#209)
3 acres

Iowithla River Fire (#237)
36,559 acres

Levelock Creek Fire (#217)
1 acres

Levelock

Pauls Creek Fire (#219)
10,057 acres

King Salmon Creek Fire (#182)
200 acres

Idavain Fire (#218)
10 acres

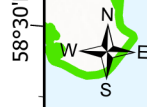
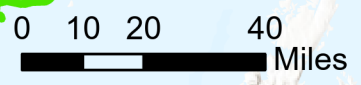
Dillingham

Ekuk

Portage Creek

Lake and Peninsula Borough

- ⊗ Fire Origin
- Communities
- ▭ Wildfire Daily Fire Perimeter
- ▭ Temporary Flight Restriction
- ▭ Southwest Area Planning Groups



159°W 158°W 157°W 156°W 155°W 154°W 153°W 152°W

63°N 62°N 61°N 60°N 59°N 58°N

63°N 62°N 61°N 60°N 59°N 58°N