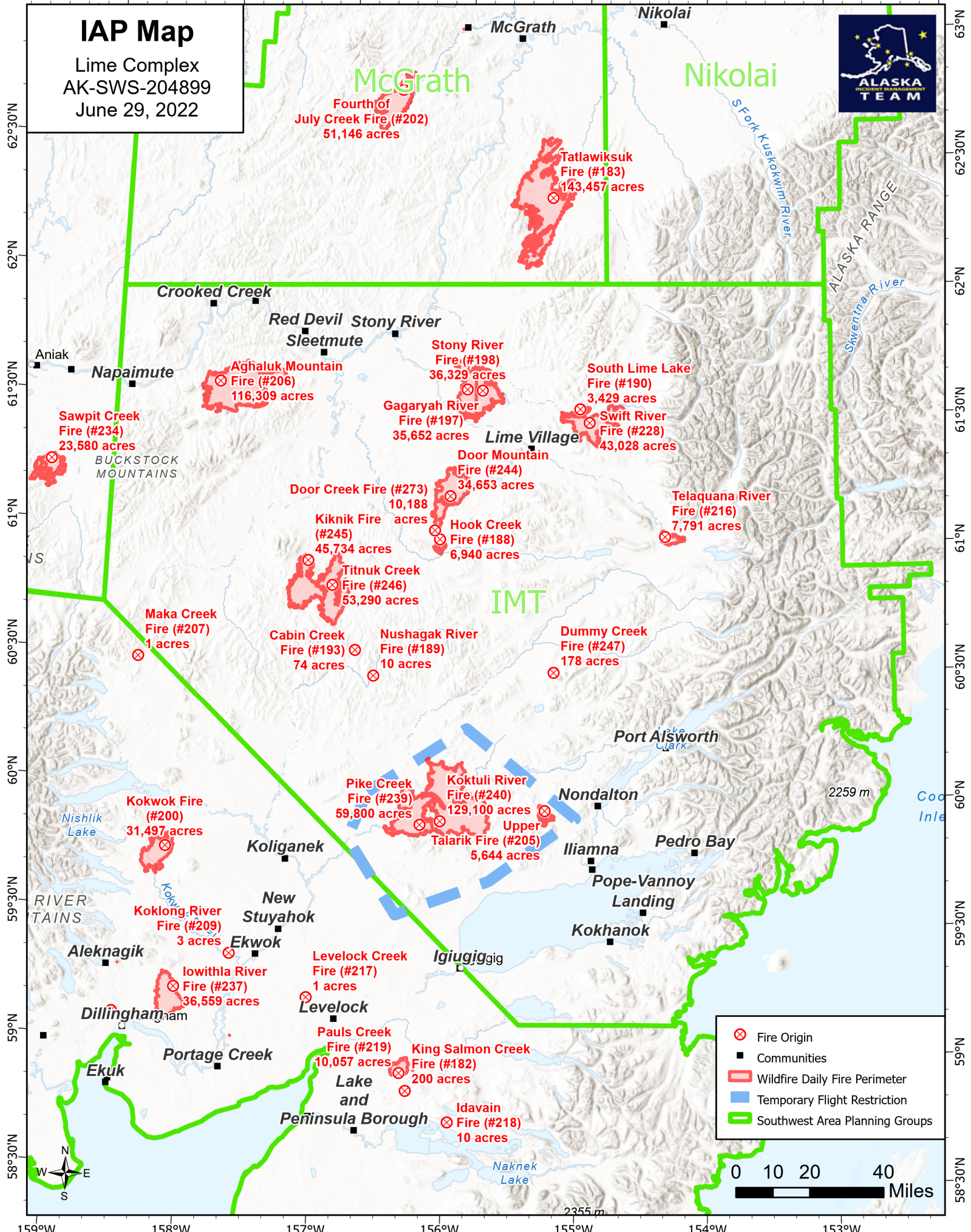


159°W 158°W 157°W 156°W 155°W 154°W 153°W 152°W

IAP Map

Lime Complex
AK-SWS-204899
June 29, 2022



McGrath Nikolai

Fourth of July Creek Fire (#202)
51,146 acres
Tatlawiksuk Fire (#183)
143,457 acres

Crooked Creek Red Devil Stony River
Sleetmute
Aghaluk Mountain Fire (#206)
116,309 acres
Stony River Fire (#198)
36,329 acres
Gagaryah River Fire (#197)
35,652 acres
South Lime Lake Fire (#190)
3,429 acres
Swift River Fire (#228)
43,028 acres

Sawpit Creek Fire (#234)
23,580 acres
Door Mountain Fire (#244)
34,653 acres
Door Creek Fire (#273)
10,188 acres
Kiknik Fire (#245)
45,734 acres
Hook Creek Fire (#188)
6,940 acres
Telaquana River Fire (#216)
7,791 acres
Titnuk Creek Fire (#246)
53,290 acres

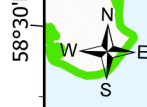
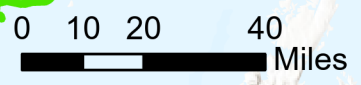
Maka Creek Fire (#207)
1 acres
Cabin Creek Fire (#193)
74 acres
Nushagak River Fire (#189)
10 acres
Dummy Creek Fire (#247)
178 acres

Kokwok Fire (#200)
31,497 acres
Pike Creek Fire (#239)
59,800 acres
Koktuli River Fire (#240)
129,100 acres
Talarik Fire (#205)
5,644 acres
Upper

Koklong River Fire (#209)
3 acres
Aleknagik
New Stuyahok
Ekwok
Iowithla River Fire (#237)
36,559 acres
Levelock Creek Fire (#217)
1 acres
Levelock
Igiugigigig

Dillingham
Ekuk
Portage Creek
Pauls Creek Fire (#219)
10,057 acres
King Salmon Creek Fire (#182)
200 acres
Lake and Peninsula Borough
Idavain Fire (#218)
10 acres

- ⊗ Fire Origin
- Communities
- ▭ Wildfire Daily Fire Perimeter
- ▭ Temporary Flight Restriction
- ▭ Southwest Area Planning Groups



159°W 158°W 157°W 156°W 155°W 154°W 153°W 152°W

63°N
62°30'N
62°N
61°30'N
61°N
60°30'N
60°N
59°30'N
59°N
58°30'N