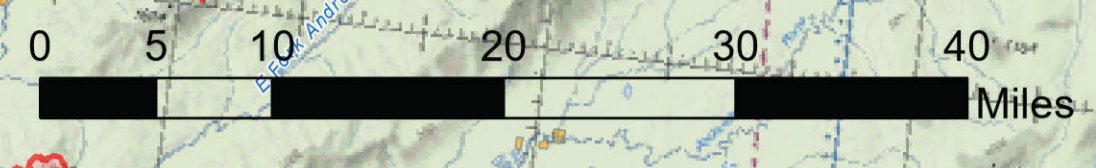


# Aviation

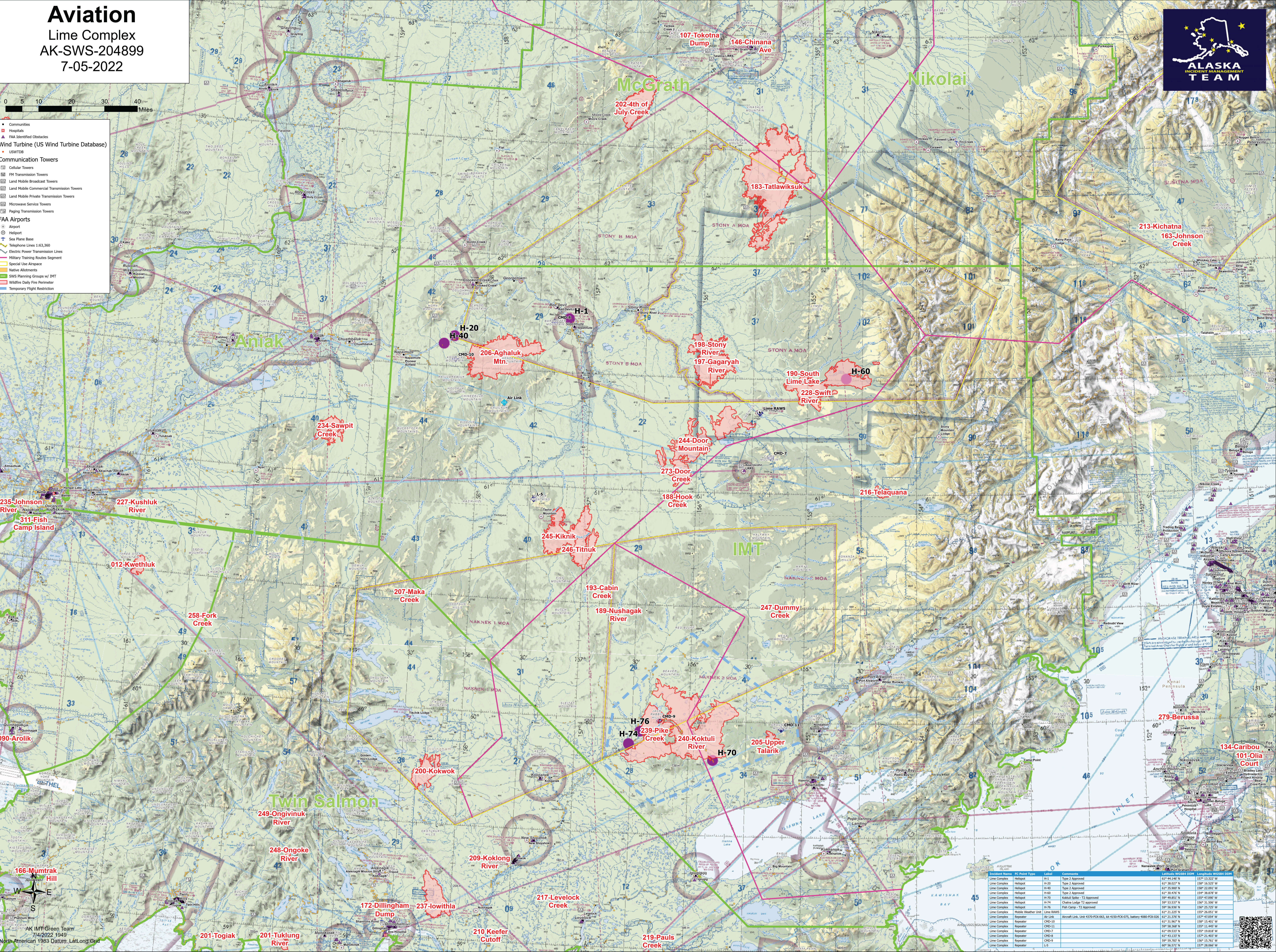
Line Complex

AK-SWS-204899

7-05-2022



- Communities
- Hospitals
- FAA Identified Obstacles
- Wind Turbine (US Wind Turbine Database)
- USWTD
- Communication Towers
  - Cellular Towers
  - FM Transmission Towers
  - Land Mobile Broadcast Towers
  - Land Mobile Commercial Transmission Towers
  - Land Mobile Private Transmission Towers
  - Microwave Service Towers
  - Paging Transmission Towers
- FAA Airports
  - Airport
  - Helipad
  - Sea Plane Base
- Telephone Lines 1:63,360
- Electric Power Transmission Lines
- Military Training Routes Segment
- Special Use Airspace
- Native Allotments
- SWS Planning Groups w/ IMT
- Wildfire Daily Fire Perimeter
- Temporary Flight Restriction



Identified Name	IC Point Type	Label	Comments	Longitude (NAD83) (Easting)	Latitude (NAD83) (Northing)
Line Complex	Helipad	H-1	Type 2 Approved	61° 44.146' N	157° 13.322' W
Line Complex	Helipad	H-20	Type 2 Approved	61° 38.027' N	158° 16.525' W
Line Complex	Helipad	H-40	Type 2 Approved	61° 38.000' N	158° 12.291' W
Line Complex	Helipad	H-60	Type 2 Approved	61° 30.476' N	154° 38.878' W
Line Complex	Helipad	H-70	Kobuk Spike - T2 Approved	59° 49.851' N	155° 47.898' W
Line Complex	Helipad	H-74	Chama Lodge T2 approved	59° 13.537' N	158° 11.598' W
Line Complex	Helipad	H-76	Fish Camp - T2 Approved	59° 56.936' N	156° 35.720' W
Line Complex	Mobile Weather Line	RAW5		61° 21.225' N	155° 26.051' W
Line Complex	Repeater	CMD-7	Aircraft Link, Unit 4370-FCK-063, lat 4150-FCK-075, battery 4800-FCK-026	61° 21.378' N	158° 15.401' W
Line Complex	Repeater	CMD-10		61° 31.967' N	158° 15.401' W
Line Complex	Repeater	CMD-11		59° 58.368' N	155° 11.445' W
Line Complex	Repeater	CMD-8		61° 46.533' N	157° 12.991' W
Line Complex	Repeater	CMD-9		61° 43.133' N	157° 21.403' W
Line Complex	Repeater	CMD-9		59° 59.789' N	156° 15.761' W
Line Complex	Repeater	LS		59° 56.571' N	157° 28.866' W