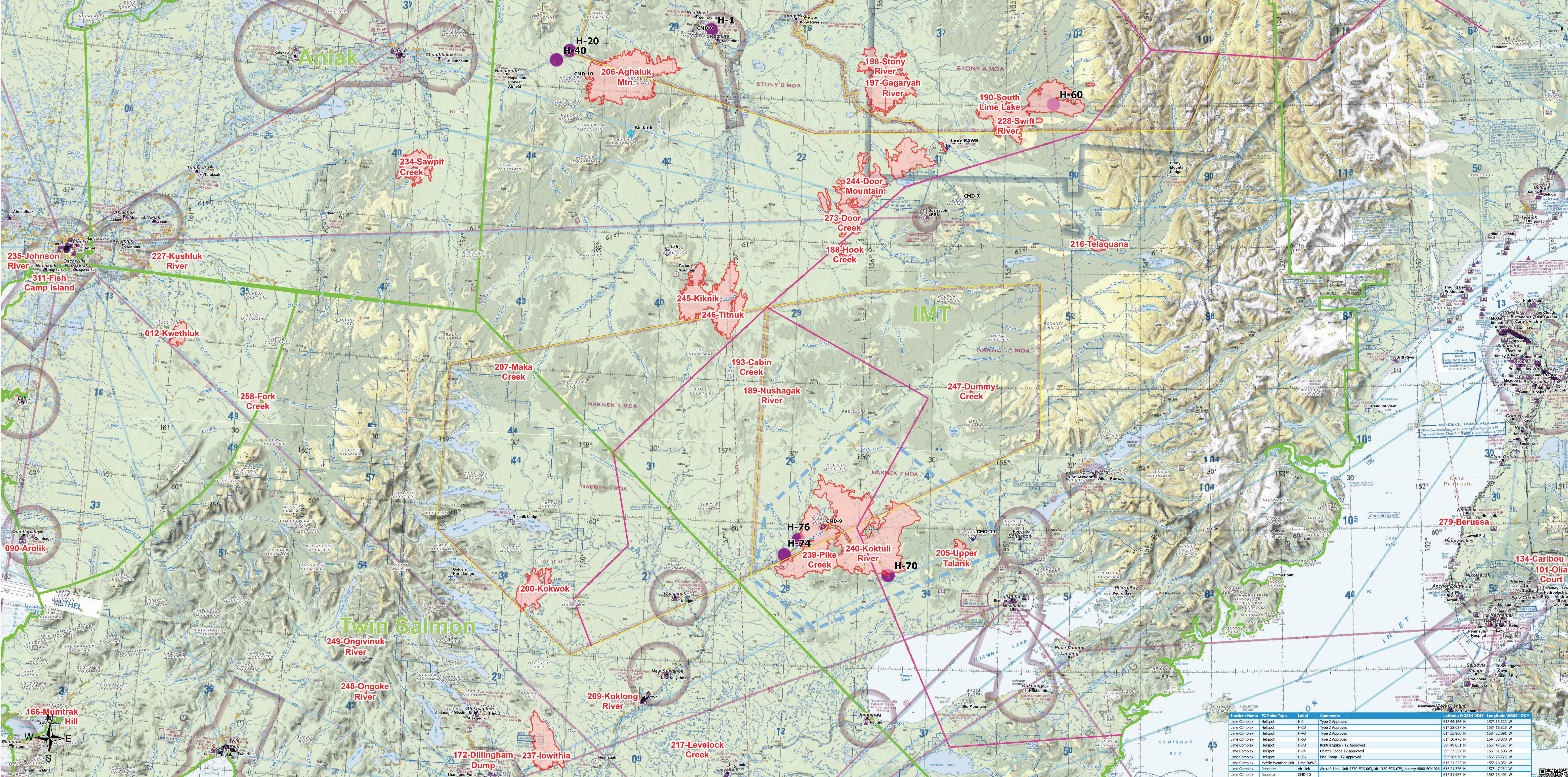


Aviation

Lime Complex
AK-SWS-204899
7-07-2022



- Communities
- Hospitals
- FAA Identified Obstacles
- Wind Turbine (US Wind Turbine Database)
- USWTD
- Communication Towers
 - Cellular Towers
 - FM Transmission Towers
 - Land Mobile Broadcast Towers
 - Land Mobile Commercial Transmission Towers
 - Land Mobile Private Transmission Towers
 - Microwave Service Towers
 - Paging Transmission Towers
- FAA Airports
 - Airport
 - Helipad
 - Sea Plane Base
- Telephone Lines 1:63,360
- Electric Power Transmission Lines
- Military Training Routes Segment
- Special Use Airspace
- Native Allotments
- SWS Planning Groups w/ IMT
- Wildfire Daily Fire Perimeter
- Temporary Flight Restriction



AK IMT Green Team
7/6/2022 1926
North American 1983 Datum, Lat/Long GCS

Identified Name	IC Point Type	Lat/Long	Comments	Longitude WGS84 BOOK	Latitude WGS84 BOOK
Line Complex	Helipad	H-51	Type 2 Approved	61° 44.146' N	157° 13.322' W
Line Complex	Helipad	H-20	Type 2 Approved	61° 38.027' N	158° 16.525' W
Line Complex	Helipad	H-40	Type 2 Approved	61° 38.000' N	158° 12.291' W
Line Complex	Helipad	H-40	Type 2 Approved	61° 38.474' N	154° 38.879' W
Line Complex	Helipad	H-70	Kobala Spike - T2 Approved	59° 49.851' N	155° 47.896' W
Line Complex	Helipad	H-24	Chama Lodge T2 approved	61° 34.537' N	158° 11.598' W
Line Complex	Helipad	H-76	Fish Camp - T2 Approved	59° 56.936' N	156° 35.720' W
Line Complex	Mobile Weather Line	RAW5		61° 21.225' N	155° 26.051' W
Line Complex	Repeater	CMD-11	Airport Link, Unit 4370-FCK-063, lat-4150-FCK-075, battery-4800-FCK-026	61° 21.378' N	158° 15.401' W
Line Complex	Repeater	CMD-10		61° 31.967' N	155° 26.051' W
Line Complex	Repeater	CMD-11		59° 58.368' N	155° 11.445' W
Line Complex	Repeater	CMD-7		61° 34.537' N	158° 11.598' W
Line Complex	Repeater	CMD-8		61° 43.133' N	157° 21.403' W
Line Complex	Repeater	CMD-9		59° 59.789' N	157° 15.761' W
Line Complex	Repeater	LS		59° 56.571' N	157° 28.866' W

