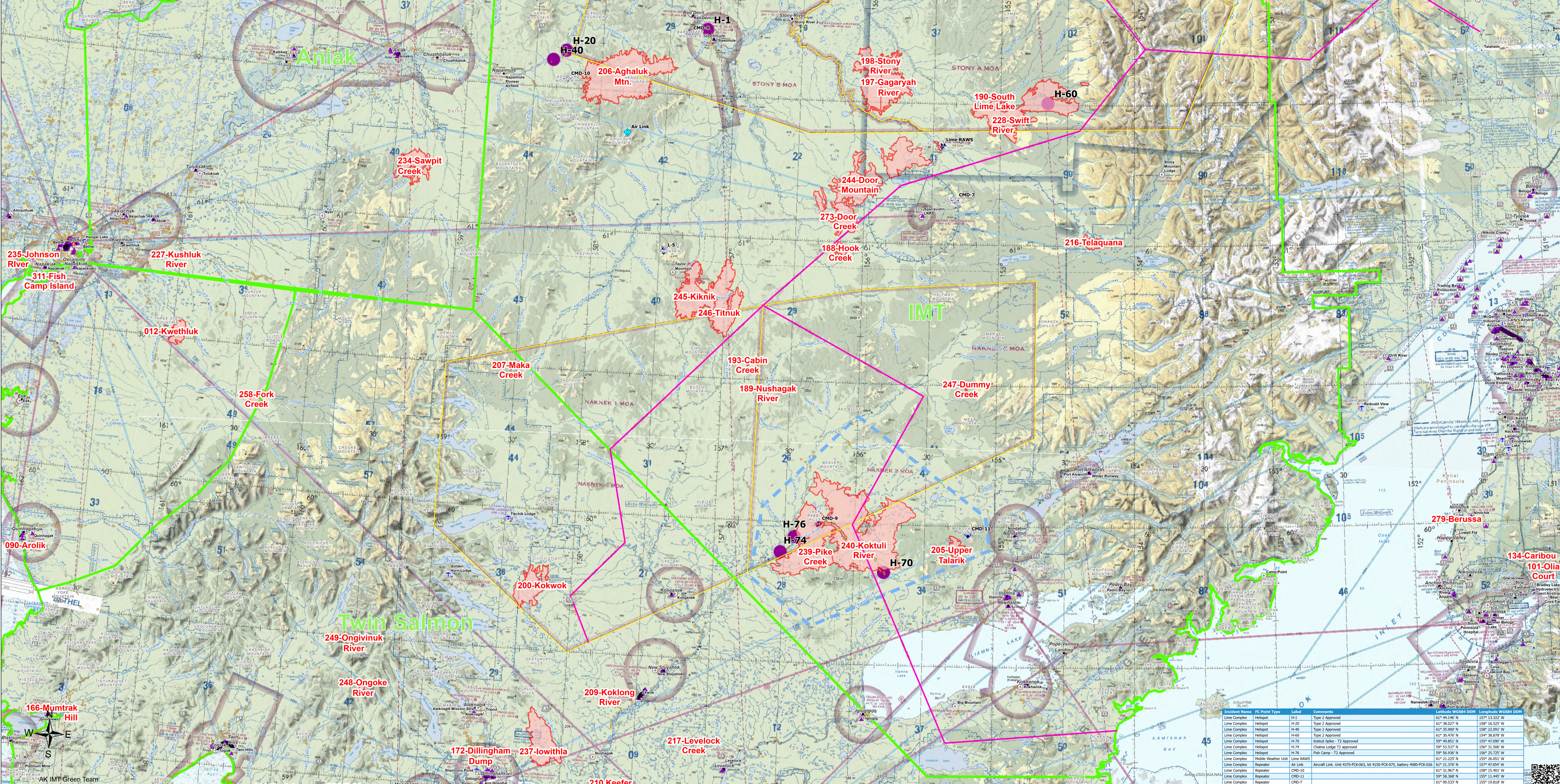


Aviation

Lime Complex
AK-SWS-204899
7-08-2022



- Communities
- Hospitals
- FAA Identified Obstacles
- Wind Turbine (US Wind Turbine Database)
- USWTD
- Communication Towers
 - Cellular Towers
 - FM Transmission Towers
 - Land Mobile Broadcast Towers
 - Land Mobile Commercial Transmission Towers
 - Land Mobile Private Transmission Towers
 - Microwave Service Towers
 - Paging Transmission Towers
- FAA Airports
 - Airport
 - Helipad
 - Sea Plane Base
- Telephone Lines 1:63,360
- Electric Power Transmission Lines
- Military Training Routes Segment
- Special Use Airspace
- Native Allotments
- SWS Planning Groups w/ IMT
- Wildfire Daily Fire Perimeter
- Temporary Flight Restriction



Identical Name	FC Point Type	Lat/Long	Comments	Longitude WGS84 DOOR
Line Complex	Helipad	61° 44.146' N	Type 2 Approved	157° 13.322' W
Line Complex	Helipad	61° 38.027' N	Type 2 Approved	158° 16.525' W
Line Complex	Helipad	61° 35.909' N	Type 2 Approved	158° 22.991' W
Line Complex	Helipad	61° 35.474' N	Type 2 Approved	158° 38.878' W
Line Complex	Helipad	59° 49.851' N	Kokali Spike - T2 Approved	155° 47.898' W
Line Complex	Helipad	59° 48.537' N	Chama Lodge T2 approved	158° 11.598' W
Line Complex	Helipad	59° 56.936' N	Fire Camp - T2 Approved	158° 35.720' W
Line Complex	Mobile Weather Unit	61° 21.225' N		155° 26.651' W
Line Complex	Repeater	61° 21.276' N	Air Link	158° 15.951' W
Line Complex	Repeater	61° 31.967' N		158° 15.401' W
Line Complex	Repeater	61° 38.368' N		155° 11.445' W
Line Complex	Repeater	61° 36.503' N		155° 10.688' W
Line Complex	Repeater	61° 45.133' N		157° 31.403' W
Line Complex	Repeater	59° 52.783' N		158° 15.761' W
Line Complex	Repeater	60° 36.571' N		157° 28.866' W