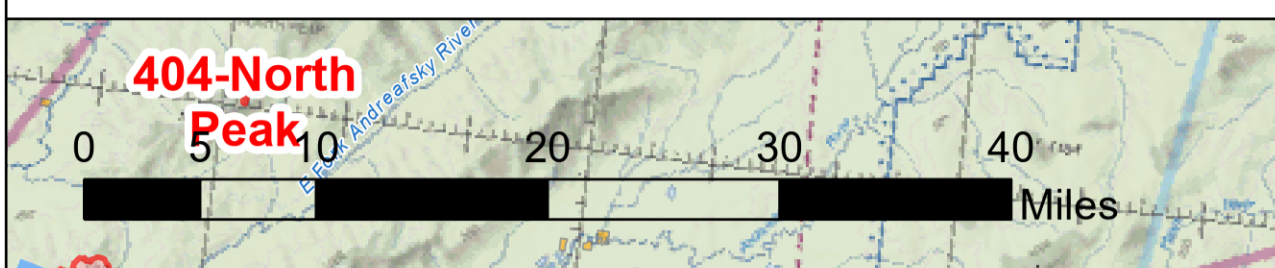
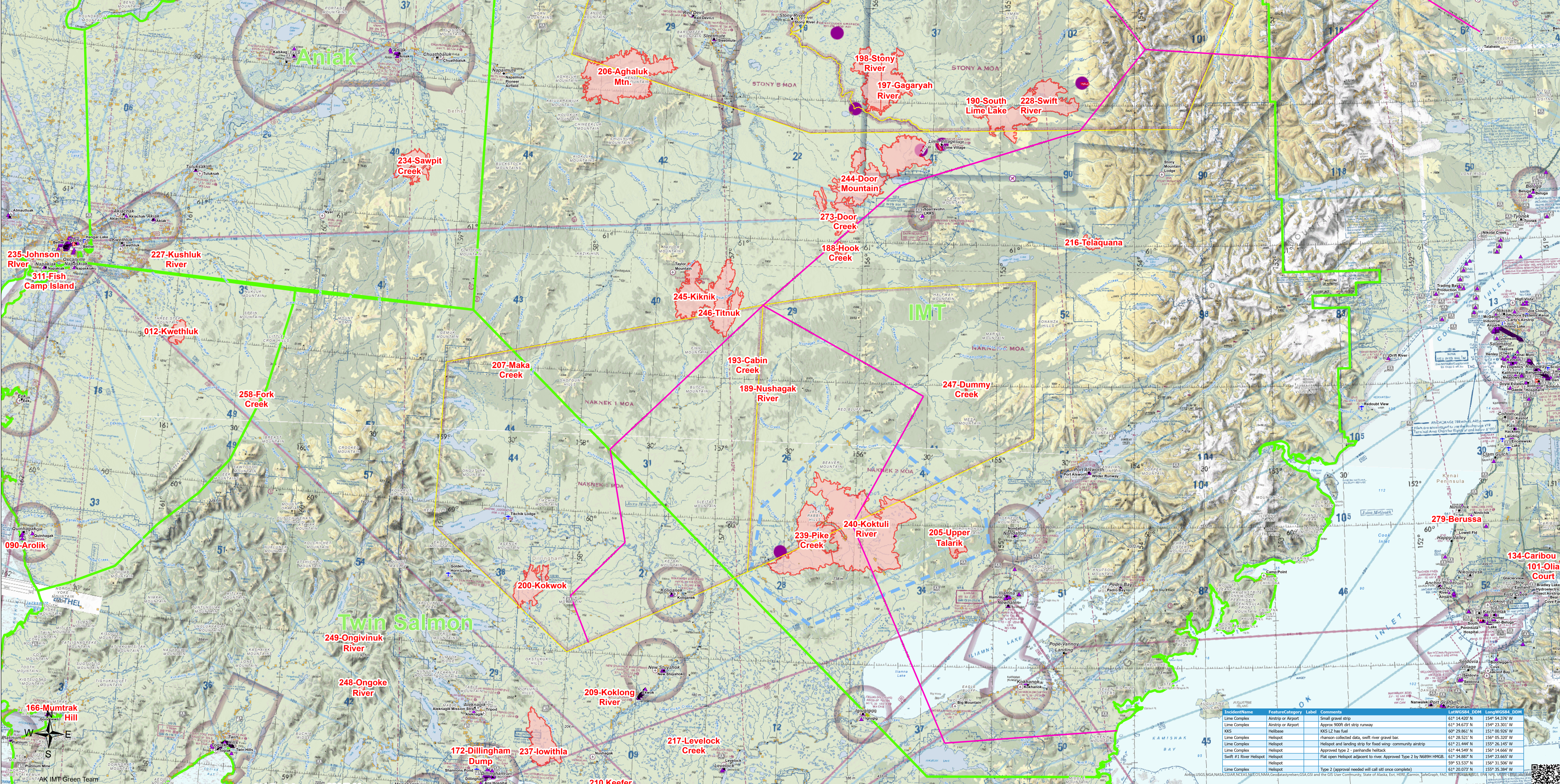


Aviation

Lime Complex
AK-SWS-204899
7-10-2022



- Communities
- Hospitals
- FAA Identified Obstacles
- Wind Turbine (US Wind Turbine Database)
- USWTD
- Communication Towers
 - Cellular Towers
 - FM Transmission Towers
 - Land Mobile Broadcast Towers
 - Land Mobile Commercial Transmission Towers
 - Land Mobile Private Transmission Towers
 - Microwave Service Towers
 - Paging Transmission Towers
- FAA Airports
 - Airport
 - Helipad
 - Sea Plane Base
 - Telephone Lines 1:63,360
 - Electric Power Transmission Lines
 - Military Training Routes Segment
 - Special Use Airspace
 - Native Allotments
 - SWS Planning Groups w/ IMT
 - Wildfire Daily Fire Perimeter
 - Temporary Flight Restriction



LineComplexName	FeatureCategory	Label	Comments	PerchName	EDM	Length	SS4	DOM
Line Complex	Airstrip or Airport	Small gravel strip		61° 14.420' N	154° 54.370' W			
Line Complex	Airstrip or Airport	Approx 900ft dirt strip runway		61° 34.673' N	154° 23.301' W			
RKS	Helibase	RKS LC has fuel		60° 29.861' N	151° 00.926' W			
Line Complex	Helipad	Flames collected data, swift river gravel bar		61° 28.511' N	150° 03.320' W			
Line Complex	Helipad	Helipad and landing strip for fixed wing - community airstrip		61° 21.444' N	155° 26.145' W			
Line Complex	Helipad	Approved type 2 - panhandle heliack		61° 44.549' N	156° 14.666' W			
Swift #1 River Helipad	Helipad	Flat open Helipad adjacent to river. Approved Type 2 by N689H PFMGR.		61° 34.887' N	154° 23.665' W			
Line Complex	Helipad			59° 13.317' N	154° 11.500' W			
Line Complex	Helipad	Type 2 (approval needed will call sat once complete)		61° 20.073' N	155° 35.384' W			