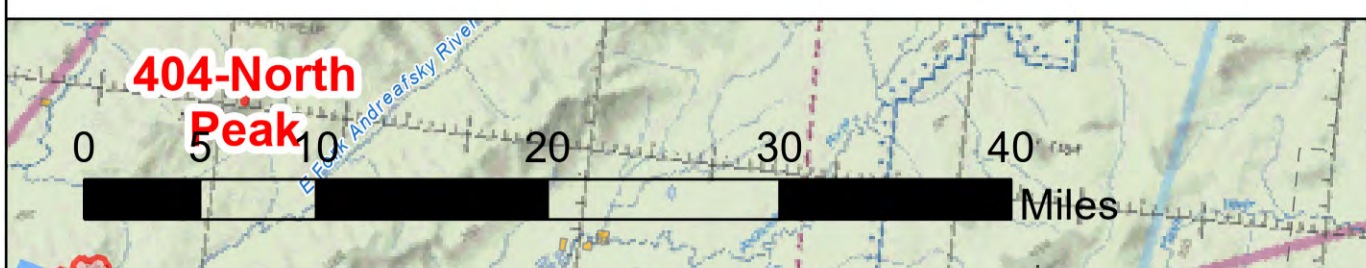
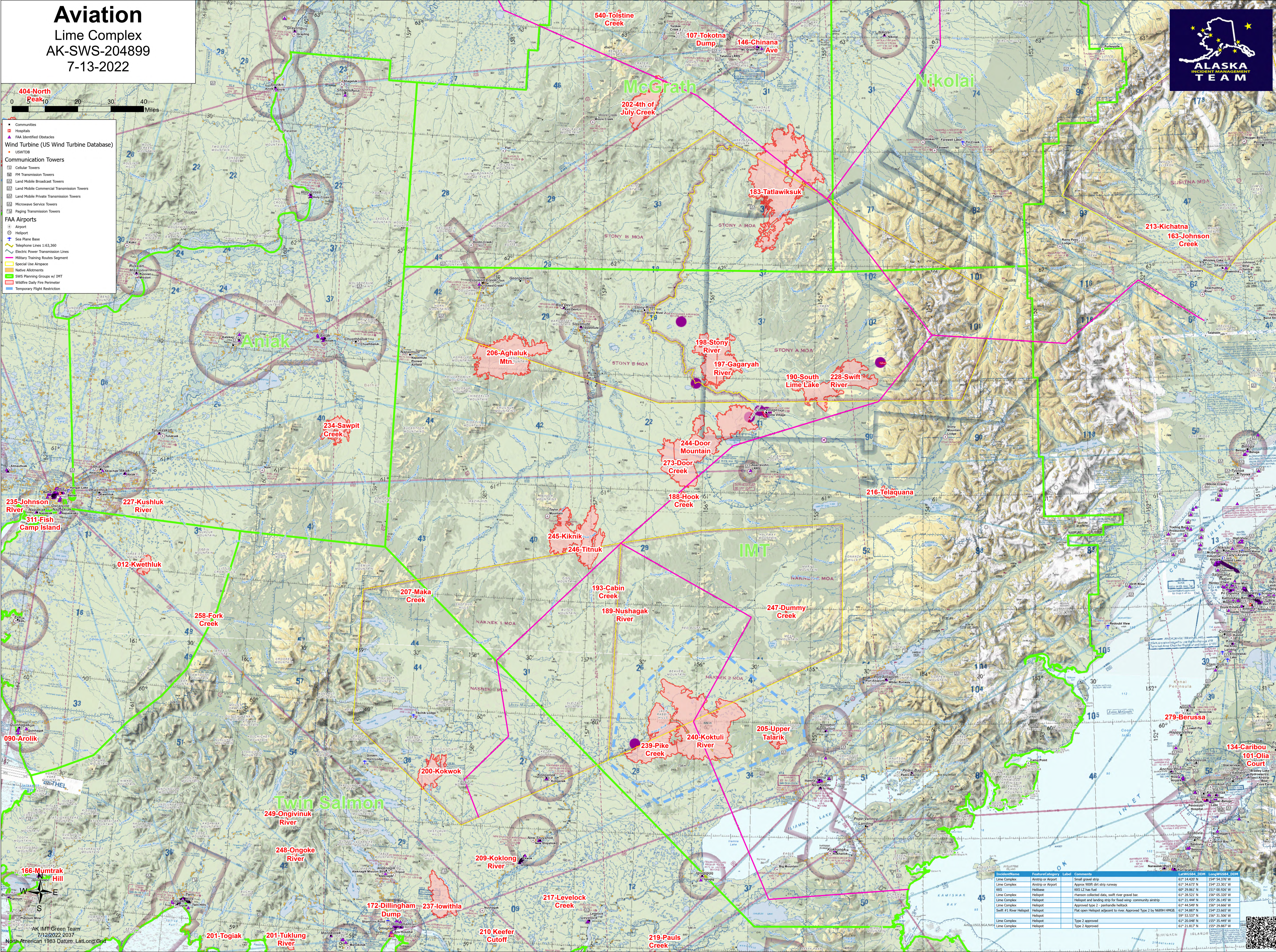


Aviation

Lime Complex
AK-SWS-204899
7-13-2022



- Communities
- ◻ Hospitals
- ▲ FAA Identified Obstacles
- Wind Turbine (US Wind Turbine Database)
- ◻ USWTD
- Communication Towers
 - ◻ Cellular Towers
 - ◻ FM Transmission Towers
 - ◻ Land Mobile Broadcast Towers
 - ◻ Land Mobile Commercial Transmission Towers
 - ◻ Land Mobile Private Transmission Towers
 - ◻ Microwave Service Towers
 - ◻ Paging Transmission Towers
- FAA Airports
 - ◻ Airport
 - ◻ Heliport
 - ◻ Sea Plane Base
 - ◻ Telephone Lines 1:63,360
 - ◻ Electric Power Transmission Lines
 - ◻ Military Training Routes Segment
 - ◻ Special Use Airspace
 - ◻ Native Allotments
 - ◻ SWS Planning Groups w/ IMT
 - ◻ Wildfire Daily Fire Perimeter
 - ◻ Temporary Flight Restriction



Line/Complex Name	Feature Category	Label	Comments	Latitude (N)	Longitude (W)	Length (Miles)	Speed (Knots)
Line Complex	Airport or Airport	Small gravel strip		63° 14.420' N	154° 54.370' W		
Line Complex	Airport or Airport	Approx 900ft dirt strip runway		63° 34.673' N	154° 23.301' W		
RKS	Helibase	RKS LZ has fuel		60° 29.861' N	151° 00.926' W		
Line Complex	Helispot	Flumes collected data, swift river gravel bar		63° 28.511' N	150° 03.320' W		
Line Complex	Helispot	Helispot and landing strip for food wing- community airstrip		63° 21.444' N	155° 26.145' W		
Line Complex	Helispot	Approved type 2 - panhandle helispot.		63° 44.549' N	156° 14.666' W		
Swift #1 River	Helispot	Flat open Helispot adjacent to river. Approved Type 2 by N89H PFMGR.		63° 34.887' N	154° 23.665' W		
Line Complex	Helispot			59° 13.137' N	150° 11.900' W		
Line Complex	Helispot	Type 2 approved		63° 20.048' N	155° 35.449' W		
Line Complex	Helispot	Type 2 Approved		63° 21.817' N	155° 29.887' W		

AK IMT Green Team
7/12/2022 2037
North American 1983 Datum, LatLong Grid