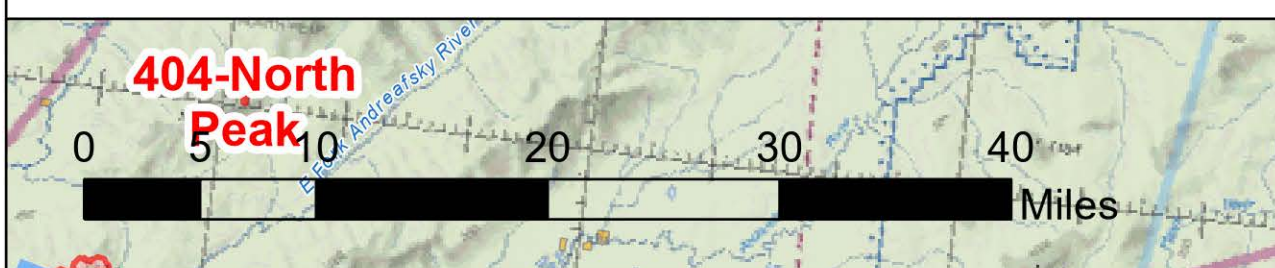
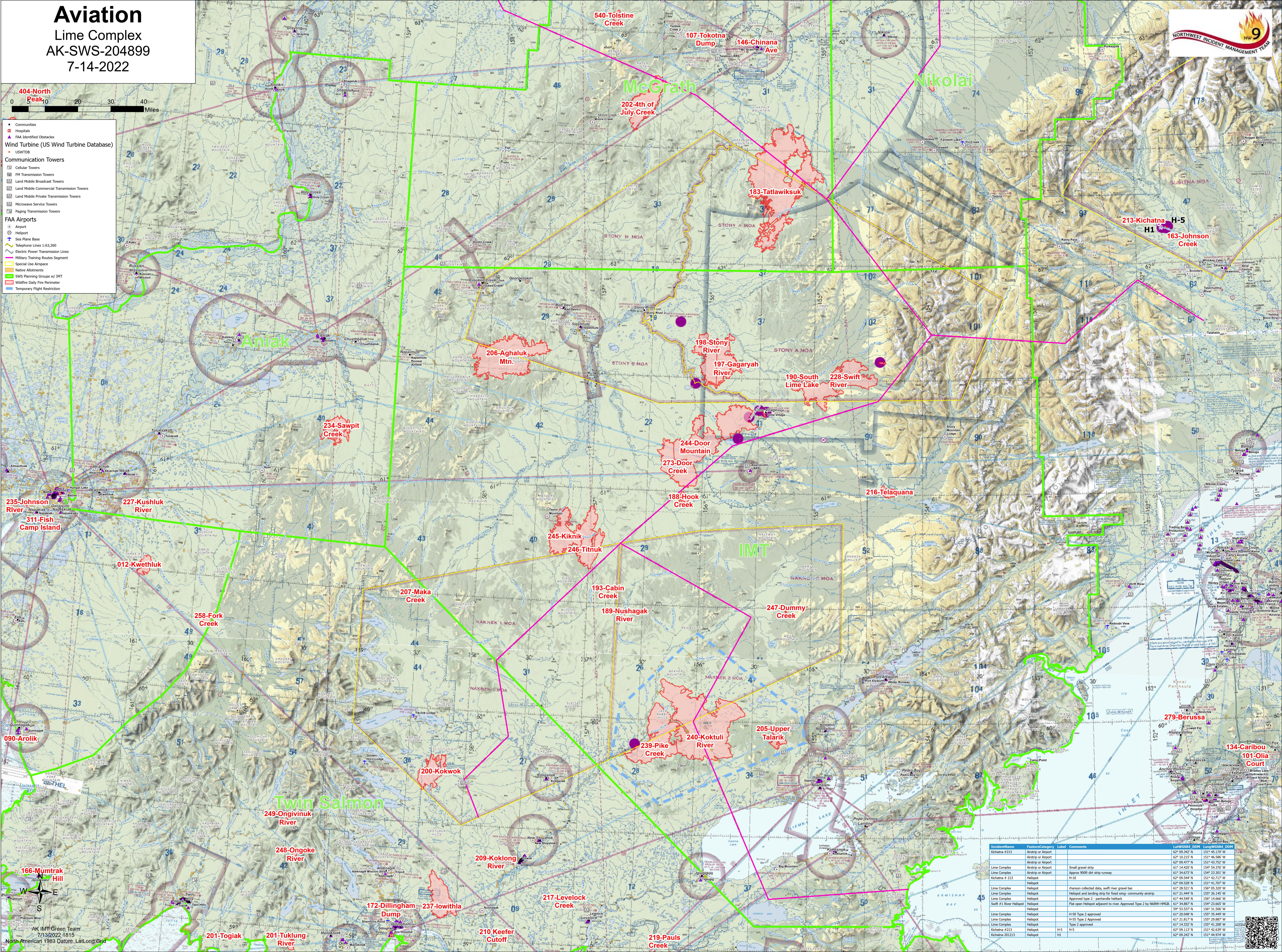


Aviation

Lime Complex
AK-SWS-204899
7-14-2022



- Communities
- Hospitals
- FAA Identified Obstacles
- Wind Turbine (US Wind Turbine Database)
- USWTD
- Communication Towers
 - Cellular Towers
 - FM Transmission Towers
 - Land Mobile Broadcast Towers
 - Land Mobile Commercial Transmission Towers
 - Land Mobile Private Transmission Towers
 - Microwave Service Towers
 - Paging Transmission Towers
- FAA Airports
 - Airport
 - Helipad
 - Sea Plane Base
 - Telephone Lines 1:63,360
 - Electric Power Transmission Lines
 - Military Training Routes Segment
 - Special Use Airspace
 - Native Allotments
 - SWS Planning Groups w/ IMT
 - Wildfire Daily Fire Perimeter
 - Temporary Flight Restriction



Element Name	Location/Category	Label	Comments	UTM Zone	UTM Easting	UTM Northing
Kichina #213	Airport or Airport			62° 09' 34.22" N	151° 46' 58.00" W	
	Airport or Airport			62° 09' 47.77" N	151° 43' 75.72" W	
	Airport or Airport		Small gravel strip	62° 14' 42.00" N	154° 56' 28.70" W	
	Airport or Airport		Approved 900E air strip runway	62° 34' 42.92" N	154° 23' 20.30" W	
Kichina # 213	Helipad		H-10	62° 09' 54.44" N	151° 42' 71.77" W	
	Helipad			62° 09' 52.88" N	151° 41' 20.77" W	
	Helipad		Phanson collected data, swift river gravel bar	61° 28' 52.11" N	155° 05' 30.70" W	
	Helipad		Helipad and landing strip for fixed wing community airstrip	61° 21' 44.44" N	155° 26' 14.55" W	
	Helipad		Approved type 2 - parashute heliport	61° 44' 54.99" N	156° 14' 66.66" W	
	Helipad		Flat open Helipad adjacent to river. Approved Type 2 by N699H HIRGL	61° 34' 08.77" N	154° 23' 66.66" W	
	Helipad			62° 53' 53.77" N	156° 31' 58.00" W	
	Helipad		H-50 Type 2 approved	61° 20' 04.65" N	155° 35' 49.44" W	
	Helipad		H-55 Type 2 Approved	61° 21' 81.77" N	155° 29' 88.77" W	
	Helipad		Type 2 approved	61° 14' 33.22" N	155° 41' 28.88" W	
Kichina # 213	Helipad			62° 09' 12.11" N	151° 42' 42.92" W	
Kichina 201213	Helipad		H-5	62° 09' 24.22" N	151° 44' 9.94" W	

AK IMT Green Team
7/13/2022 1815
North American 1983 Datum, Lat/Long Grid