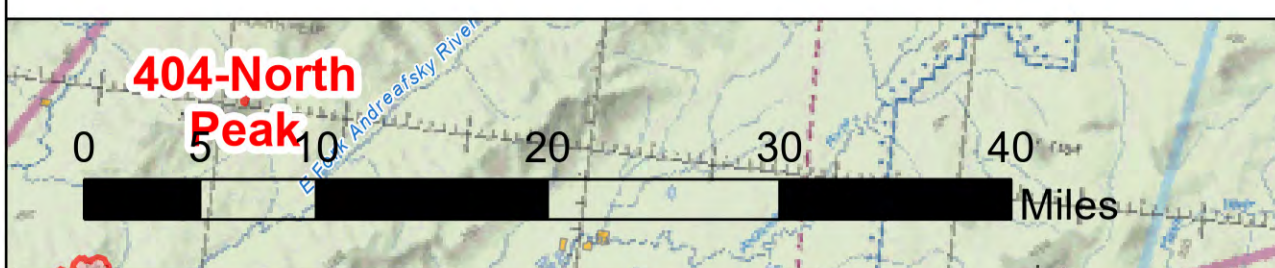
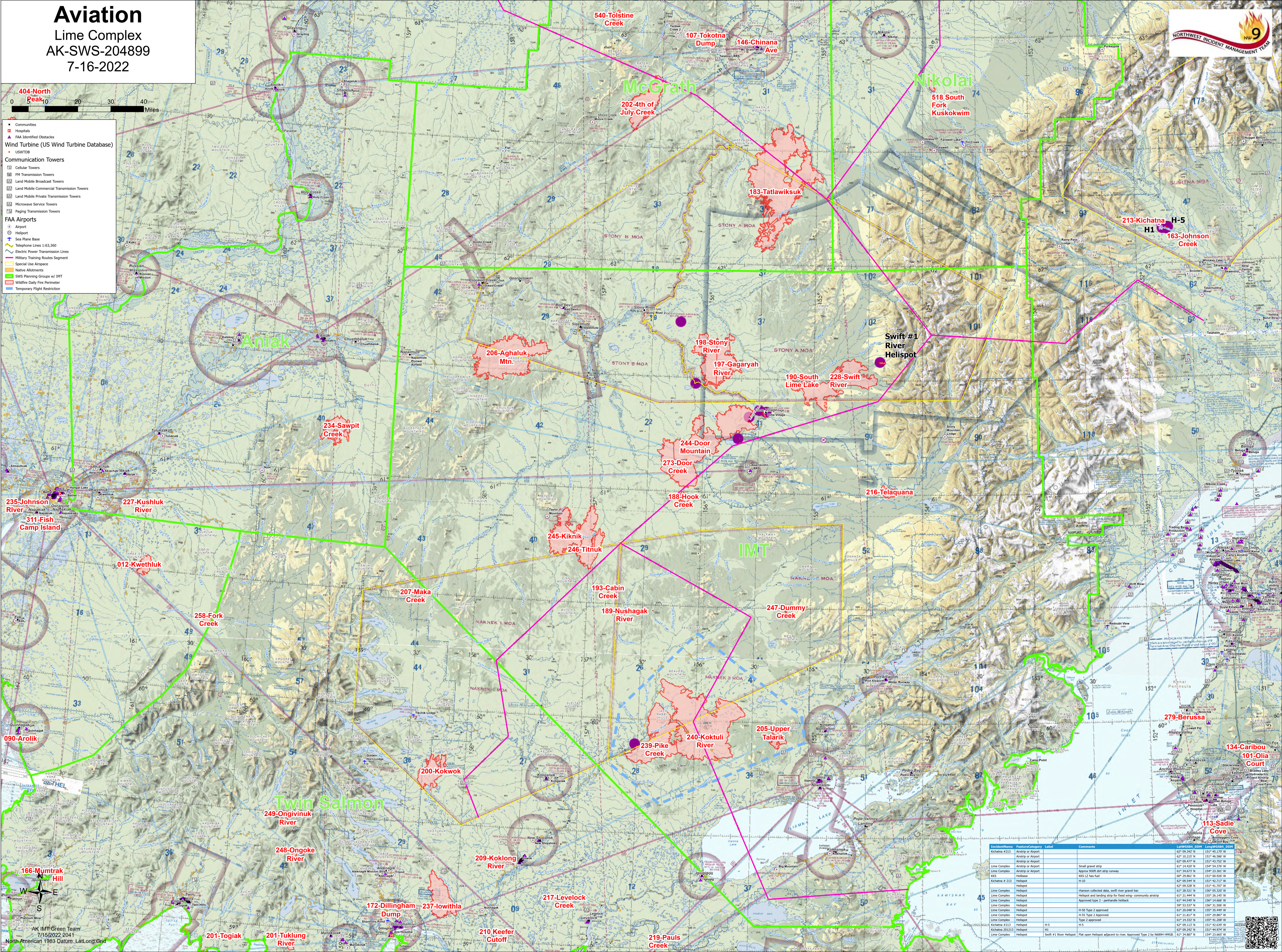


Aviation

Lime Complex
AK-SWS-204899
7-16-2022



- Communities
- Hospitals
- FAA Identified Obstacles
- Wind Turbine (US Wind Turbine Database)
- USWTD
- Communication Towers
 - Cellular Towers
 - FM Transmission Towers
 - Land Mobile Broadcast Towers
 - Land Mobile Commercial Transmission Towers
 - Land Mobile Private Transmission Towers
 - Microwave Service Towers
 - Paging Transmission Towers
- FAA Airports
 - Airport
 - Helipad
 - Sea Plane Base
 - Telephone Lines 1:63,360
 - Electric Power Transmission Lines
 - Military Training Routes Segment
 - Special Use Airspace
 - Native Allotments
 - SWS Planning Groups w/ IMT
 - Wildfire Daily Fire Perimeter
 - Temporary Flight Restriction



Location	Feature/Category	Label	Comments	Latitude	Longitude	Comments	USWTD	
Kichina #233	Helipad or Airport			62° 10.215' N	151° 46.580' W			
	Helipad or Airport			62° 09.977' N	151° 43.252' W			
	Helipad or Airport		Small gravel strip	62° 14.842' N	154° 14.270' W			
	Helipad or Airport		Approx 100ft dirt strip runways	62° 34.673' N	154° 23.301' W			
KKS	Helibase		KKS L2 has fuel	60° 28.861' N	151° 00.920' W			
	Helibase			62° 05.947' N	151° 42.117' W			
Kichina # 233	Helipad		H-10	62° 09.208' N	151° 41.707' W			
	Helipad		Person collected data, swift river gravel bar	61° 28.521' N	150° 05.320' W			
	Helipad		Helipad and landing area for fixed wing; community airstrip	61° 21.441' N	150° 26.451' W			
	Helipad		Approved type 2 - aerobically heatack	61° 44.569' N	150° 14.666' W			
	Helipad			59° 53.537' N	150° 31.506' W			
	Helipad			61° 30.948' N	150° 35.491' W			
	Helipad			61° 21.837' N	150° 29.887' W			
	Helipad		H-55 Type 2 Approved	61° 14.332' N	150° 41.208' W			
	Helipad		Type 2 Approved	62° 09.113' N	151° 42.639' W			
	Helipad		H-5	62° 09.208' N	151° 44.978' W			
	Helipad		H-1	61° 34.887' N	151° 23.665' W			
	Helipad		Swift #1 River Helipad	Flat open helipad adjacent to river. Approved Type 2 by N6894 HMRB.	61° 34.887' N	151° 23.665' W		

AK IMT Green Team
7/15/2022 2041
North American 1983 Datum, Lat/Long Grid