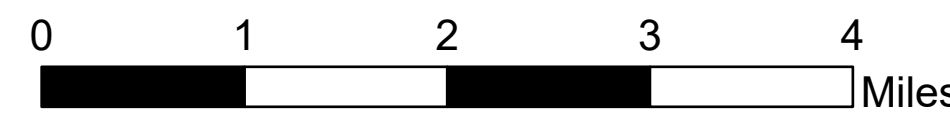


Allotments Affected by Fire Map

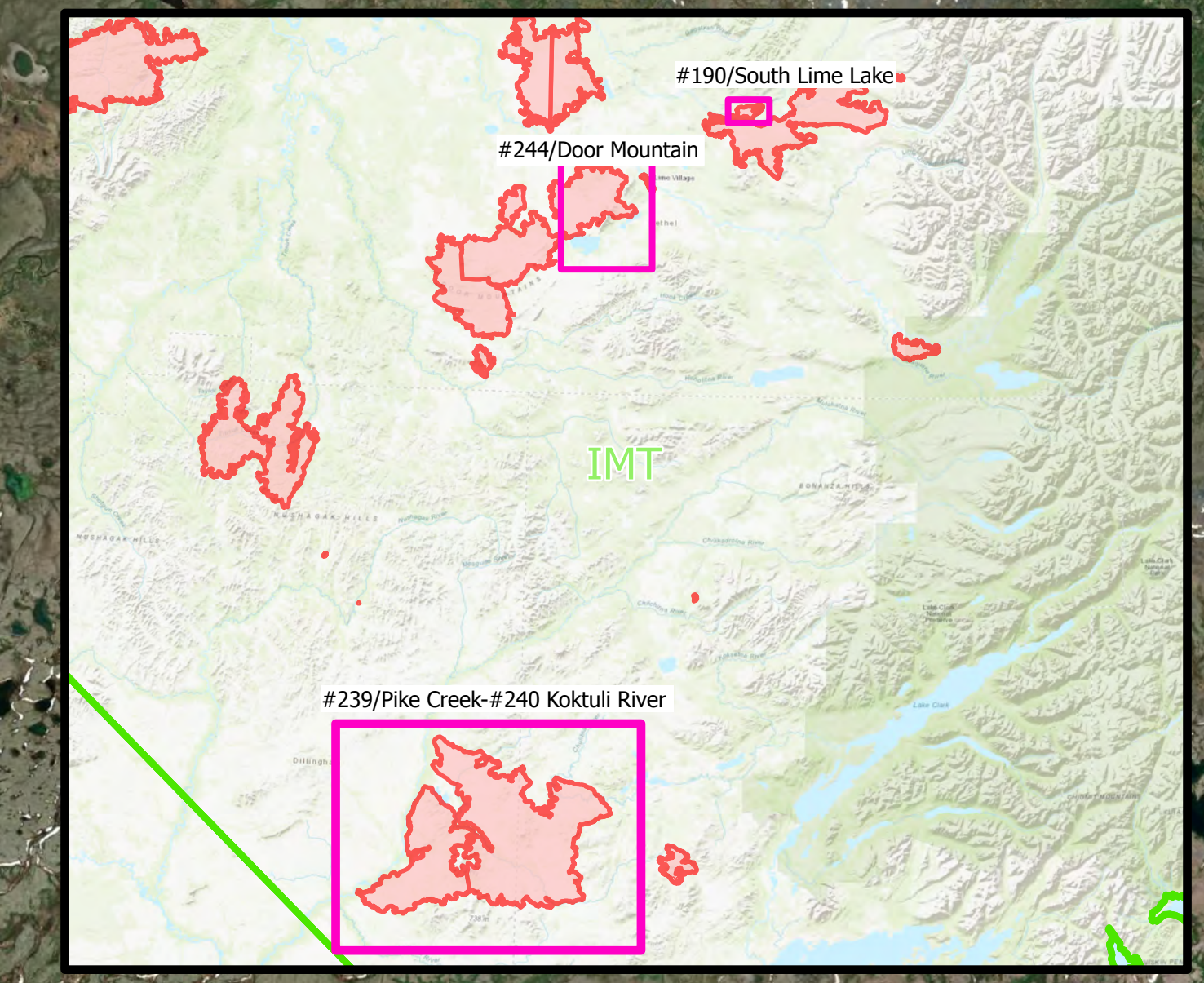
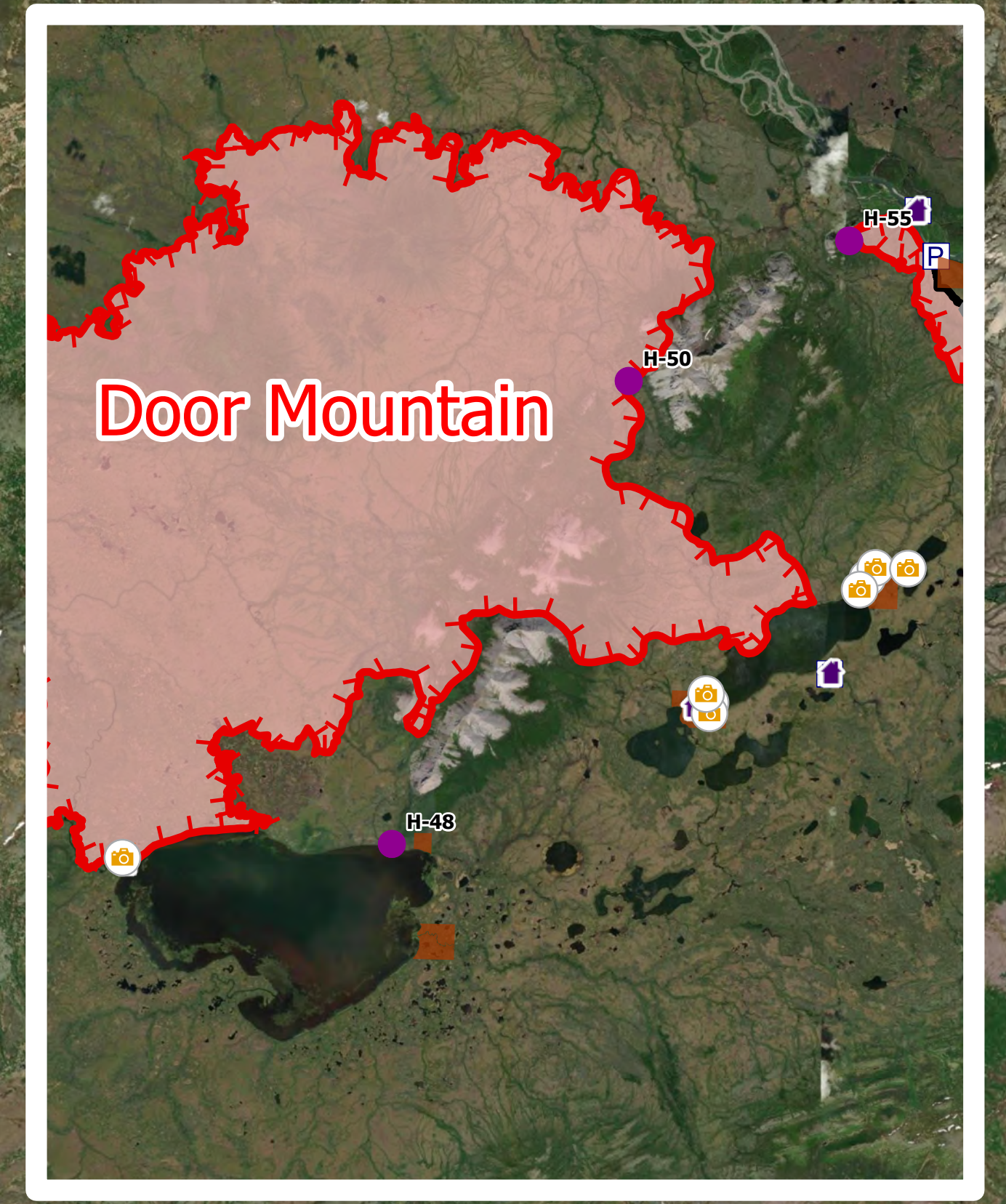
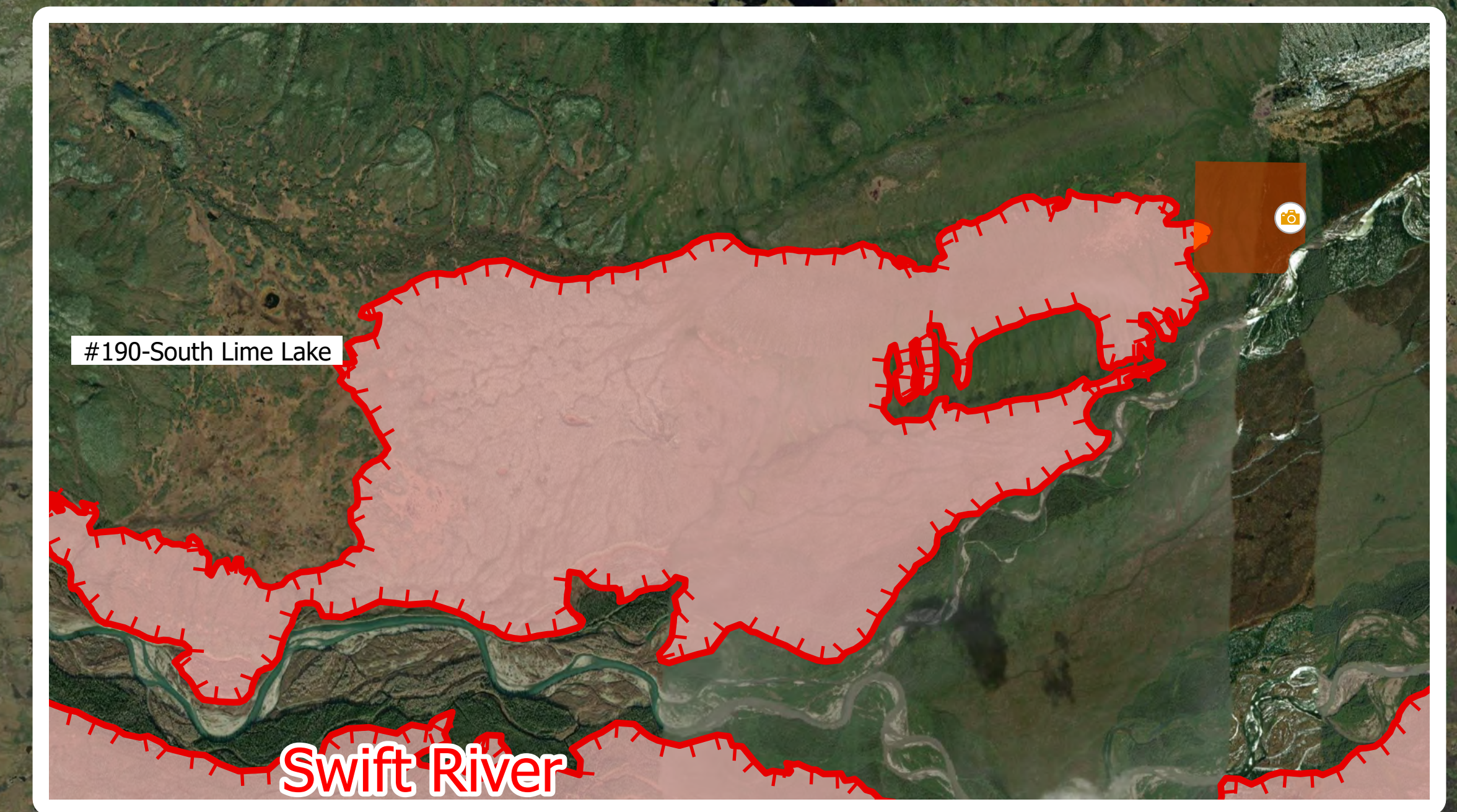
Lime Complex
AK-SWS-204899
FINAL



- Helipad
- Camp
- Repeater
- Uncountained
- Wildfire Daily Fire Perimeter
- Native Allotments
- Alaska Known Sites Database
- Structure
- affected_allots_20220704
- Photo_Merge



Allotment ID	Fire Name	~Acres Affected by Fire	Structures
FF017964A	Door Mountain	38.28	Y
FF017864	Door Mountain	48.56	Y
AA006390B	Koktuli River	31.71	N
AA006128	Koktuli River	42.61	N
A052458	Koktuli River	159.91	N
AA006462A	Koktuli River	80.03	N
AA006131	Koktuli River	112.86	N
AA006607	Koktuli River	11.07	Y
A052454	Koktuli River	116.33	N
A054444D	Koktuli River	39.98	N
AA007067	Koktuli River	104.31	N
A052461	Koktuli River	160.22	N
AA006381	Koktuli River	71.97	N
AA006419	Koktuli River	68.74	N
AA006403A	Pike Creek	84.98	N
AA006415A	Pike Creek	65.46	N
AA006431B	Pike Creek	39.98	N
AA006399B	Pike Creek	50.49	N
AA007765B	Pike Creek	78.99	Y
AA006388A	Pike Creek	46.43	N
AA053292B	Pike Creek	39.98	N
F029323	South Lime Lake	3.3	N



NW Team 9
Satellite Imagery
North American 1983 Datum, Lat, Long and
Final Production on: 20220719