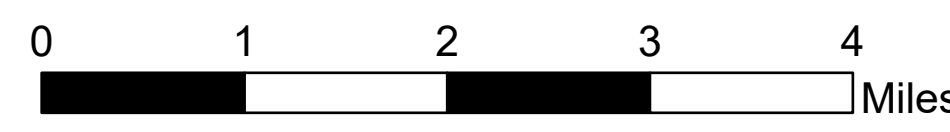


# Allotments Affected by Fire Map

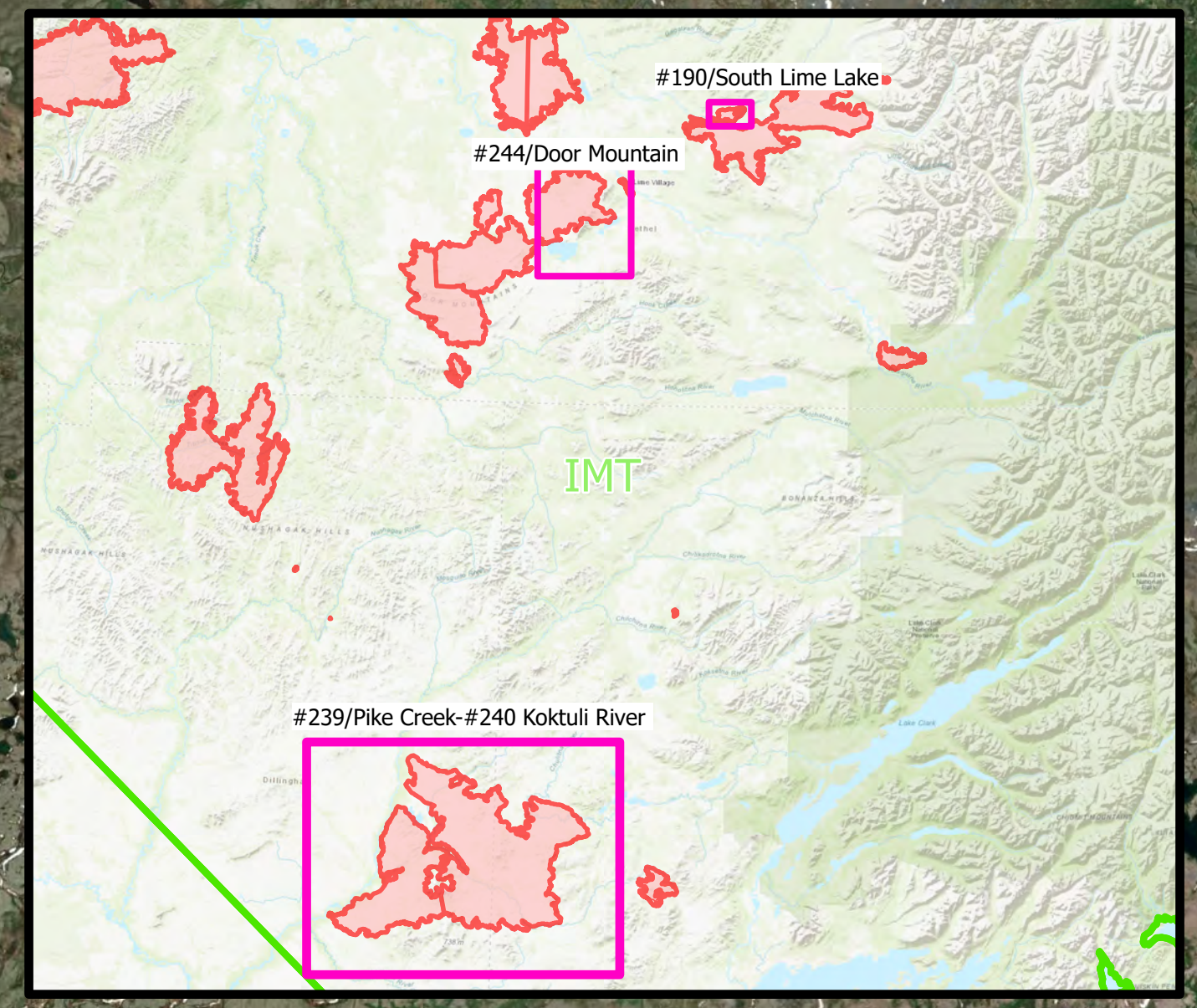
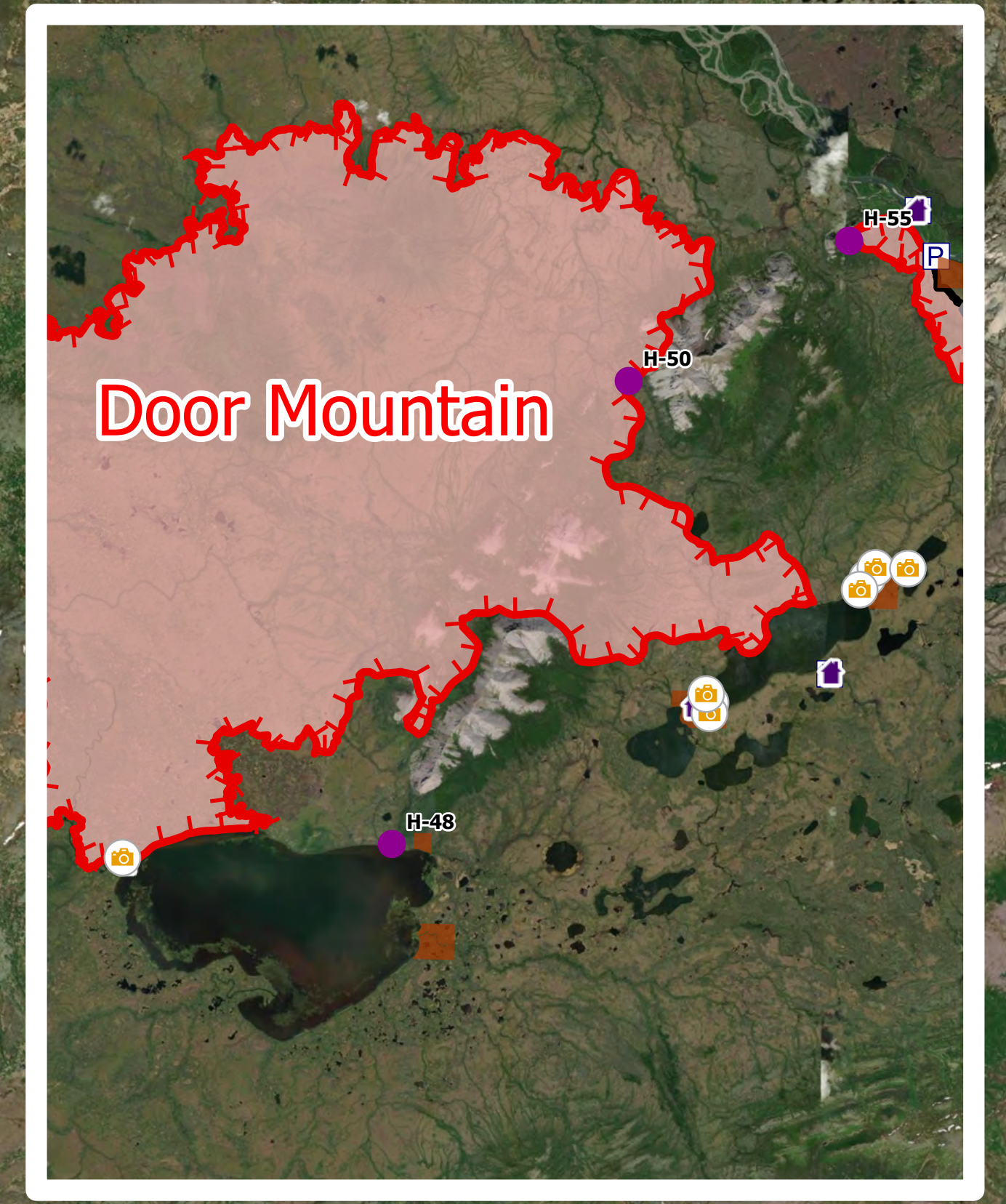
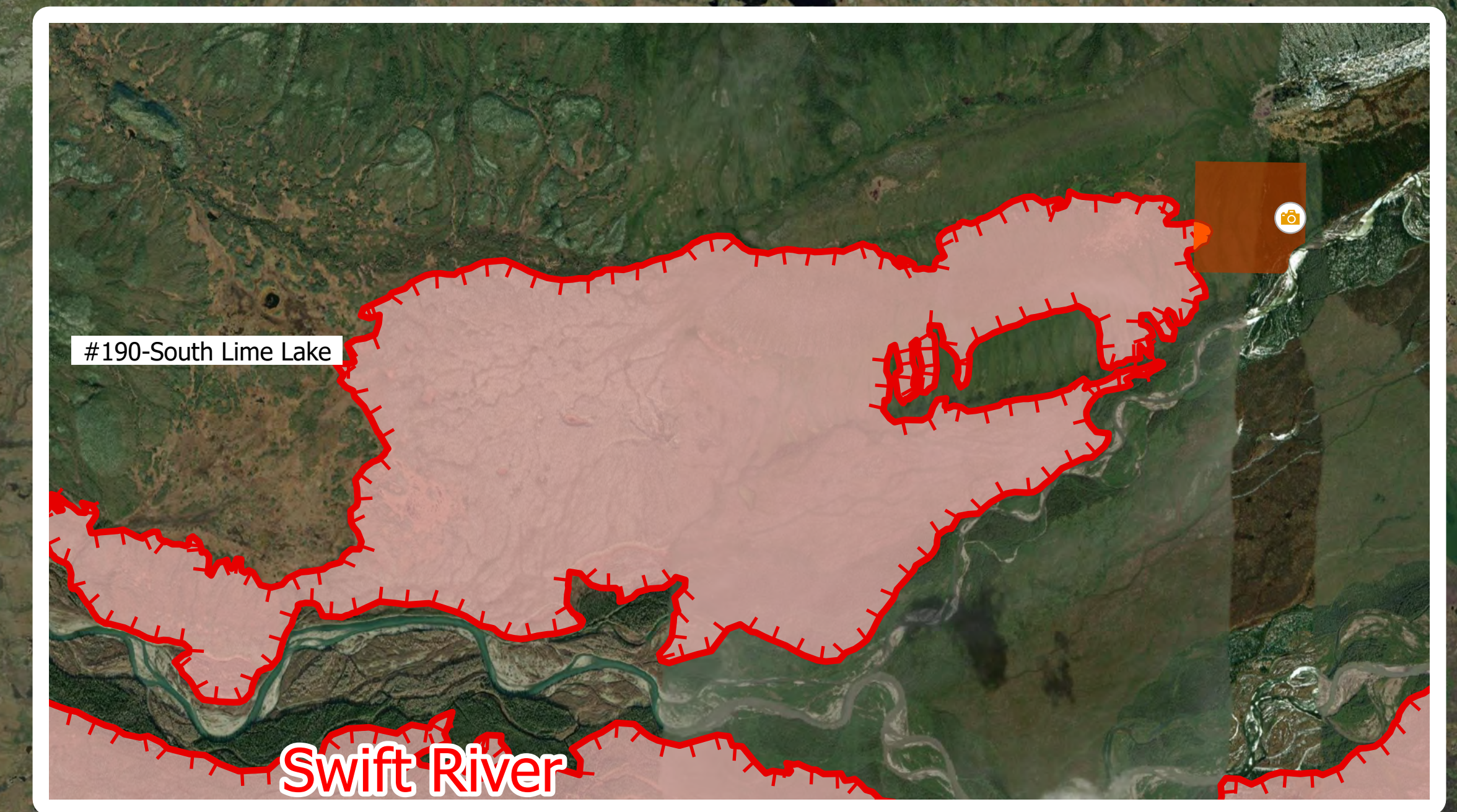
Lime Complex  
AK-SWS-204899  
"FINAL"



- Helipod
- Camp
- Repeater
- Uncountained
- Wildfire Daily Fire Perimeter
- Native Allotments
- Alaska Known Sites Database
- Structure
- affected\_allots\_20220704
- Photo\_Merge



| Allotment ID | Fire Name       | ~Acres Affected by Fire | Structures |
|--------------|-----------------|-------------------------|------------|
| FF017964A    | Door Mountain   | 38.28                   | Y          |
| FF017864     | Door Mountain   | 48.56                   | Y          |
| AA006390B    | Koktuli River   | 31.71                   | N          |
| AA006128     | Koktuli River   | 42.61                   | N          |
| A052458      | Koktuli River   | 159.91                  | N          |
| AA006462A    | Koktuli River   | 80.03                   | N          |
| AA006131     | Koktuli River   | 112.86                  | N          |
| AA006607     | Koktuli River   | 11.07                   | Y          |
| A052454      | Koktuli River   | 116.33                  | N          |
| A054444D     | Koktuli River   | 39.98                   | N          |
| AA007067     | Koktuli River   | 104.31                  | N          |
| A052461      | Koktuli River   | 160.22                  | N          |
| AA006381     | Koktuli River   | 71.97                   | N          |
| AA006419     | Koktuli River   | 68.74                   | N          |
| AA006403A    | Pike Creek      | 84.98                   | N          |
| AA006415A    | Pike Creek      | 65.46                   | N          |
| AA006431B    | Pike Creek      | 39.98                   | N          |
| AA006399B    | Pike Creek      | 50.49                   | N          |
| AA007765B    | Pike Creek      | 78.99                   | Y          |
| AA006388A    | Pike Creek      | 46.43                   | N          |
| AA053292B    | Pike Creek      | 39.98                   | N          |
| F029323      | South Lime Lake | 3.3                     | N          |



NW Team 9  
Satellite Imagery  
North American 1983 Datum, Lat, Long and  
Final Production on: 20220719