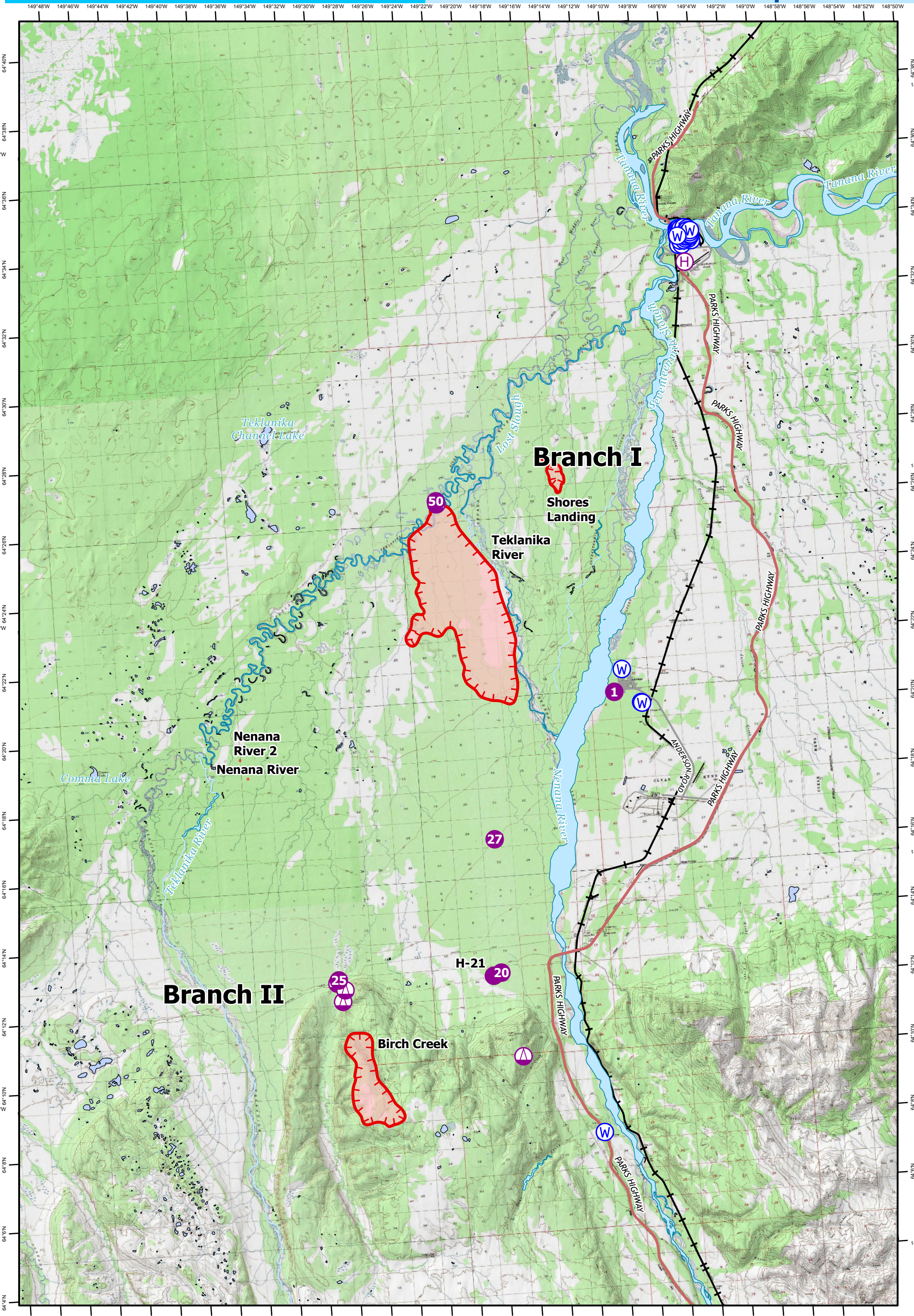


Pilot

Anderson Complex

Operations AKFAS311899 5 Aug 2023 11,267 acres



0 2 4
Nautical Miles
Area as of 4 Aug, 1430 Hrs

- Wildfire Daily Fire Perimeter
- Helispot
- ⊕ Helibase
- ⊕ Sling Site
- ⊕ Water Source
- Contained
- Uncontained
- Secondary Hwy
- Local Road
- Local Road
- Alaska Railroad



NAD 1983 Alaska Albers
Acres from GPS
1999
8/4/2023, 2058 hrs
pilot_2023_AndersonComplex_AKFAS311899

FC Point Type	Label	Latitude WGS84 DDM	Longitude WGS84 DDM
Helibase		64° 32.894' N	149° 05.397' W
Helispot	20	64° 12.642' N	149° 21.146' W
Helispot	25	64° 12.739' N	149° 32.044' W
Helispot	50	64° 26.454' N	149° 23.336' W
Helispot	27	64° 16.526' N	149° 20.970' W
Helispot	H-21	64° 12.566' N	149° 21.661' W
Helispot	1	64° 20.558' N	149° 12.249' W
Sling Site		64° 26.367' N	149° 23.315' W
Sling Site		64° 12.650' N	149° 32.155' W
Sling Site		64° 12.109' N	149° 31.854' W
Sling Site		64° 10.170' N	149° 20.061' W
Sling Site		64° 12.440' N	149° 31.645' W
Water Source		64° 20.206' N	149° 10.500' W
Water Source		64° 07.805' N	149° 14.999' W
Water Source		64° 20.187' N	149° 10.435' W
Water Source		64° 21.205' N	149° 11.635' W
Water Source		64° 33.598' N	149° 05.746' W
Water Source		64° 33.688' N	149° 05.765' W
Water Source		64° 33.742' N	149° 05.767' W
Water Source		64° 33.853' N	149° 05.772' W
Water Source		64° 33.801' N	149° 05.760' W
Water Source		64° 33.861' N	149° 05.649' W
Water Source		64° 33.883' N	149° 05.615' W
Water Source		64° 33.801' N	149° 05.642' W
Water Source		64° 33.739' N	149° 05.648' W
Water Source		64° 33.693' N	149° 05.641' W
Water Source		64° 33.748' N	149° 05.520' W
Water Source		64° 33.800' N	149° 05.488' W
Water Source		64° 33.861' N	149° 05.509' W
Water Source		64° 33.803' N	149° 05.381' W
Water Source		64° 33.750' N	149° 05.379' W
Water Source		64° 33.682' N	149° 05.399' W
Water Source		64° 33.562' N	149° 05.411' W
Water Source		64° 33.398' N	149° 05.738' W
Water Source		64° 33.399' N	149° 05.505' W
Water Source		64° 33.517' N	149° 05.590' W
Water Source		64° 33.517' N	149° 05.312' W
Water Source		64° 33.507' N	149° 04.849' W
Water Source		64° 33.560' N	149° 05.026' W
Water Source		64° 33.566' N	149° 05.226' W