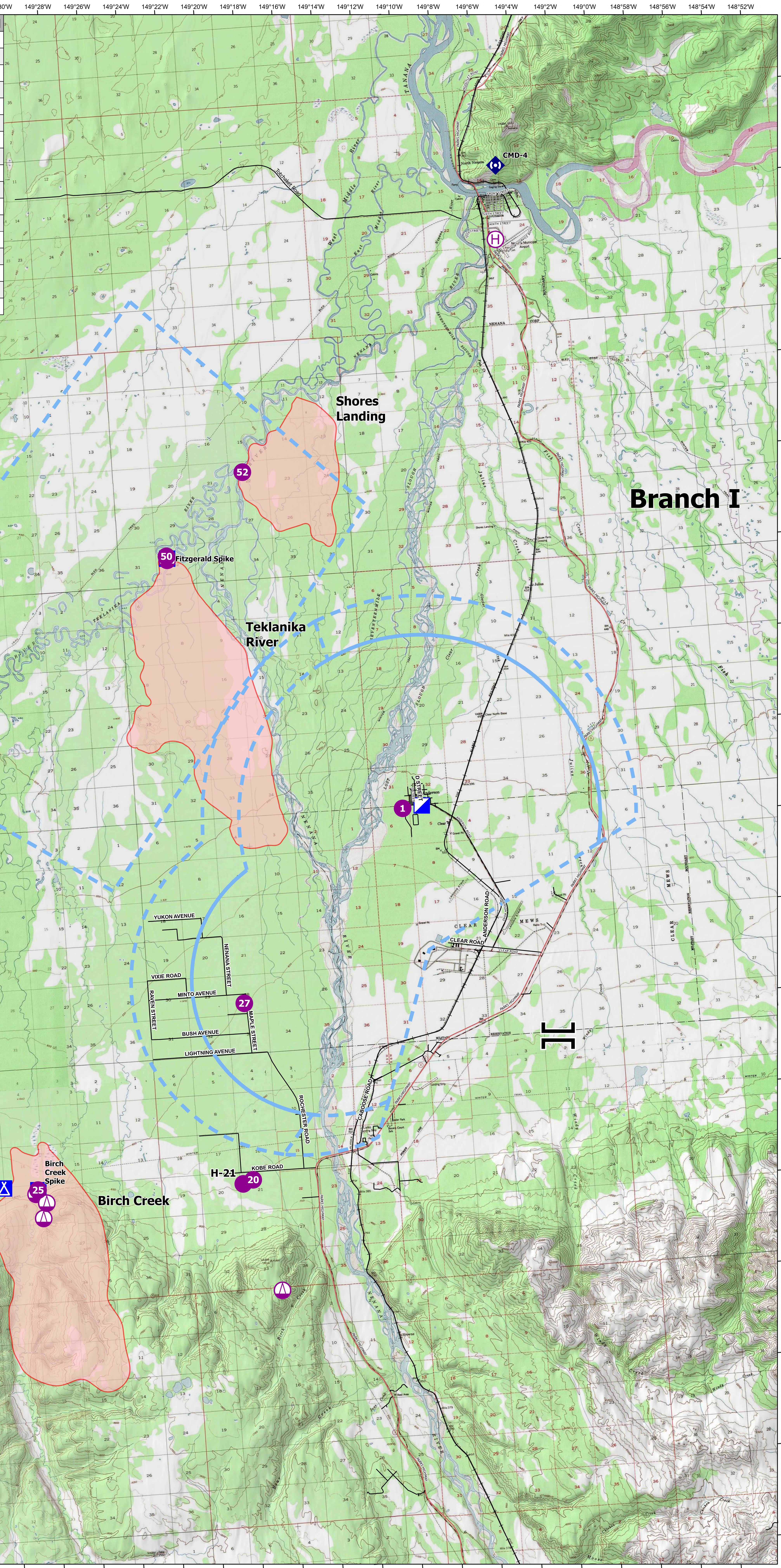


Air Operations

Anderson Complex

FC Point Type	Label	Latitude WGS84 DDM	Longitude WGS84 DDM
Camp	Birch Creek Spike	64° 12.736' N	149° 32.028' W
Camp	Crossroads Spike	64° 12.825' N	149° 33.752' W
Camp	Fitzgerald Spike	64° 26.402' N	149° 23.309' W
Helibase		64° 32.894' N	149° 05.397' W
Helispot	1	64° 20.558' N	149° 12.249' W
Helispot	20	64° 12.642' N	149° 21.146' W
Helispot	25	64° 12.739' N	149° 32.044' W
Helispot	27	64° 16.526' N	149° 20.970' W
Helispot	50	64° 26.454' N	149° 23.336' W
Helispot	52	64° 28.187' N	149° 19.172' W
Helispot	H-21	64° 12.566' N	149° 21.661' W
Repeater	CMD-4	64° 34.519' N	149° 05.115' W
Sling Site		64° 26.367' N	149° 23.315' W
Sling Site		64° 12.650' N	149° 32.155' W
Sling Site		64° 12.109' N	149° 31.854' W
Sling Site		64° 10.170' N	149° 20.061' W
Sling Site		64° 12.440' N	149° 31.645' W



Operations AKFAS311899 7 Aug 2023 23,571 acres



0 2 4
US Nautical Miles
Area as of 6 Aug, 1755 Hrs

- Wildfire Daily Fire Perimeter
- Helispot
- Helibase
- Sling Site
- Branch Break
- Incident Command Post
- Camp
- Repeater
- Temporary Flight Restriction
- Parks Highway
- Local Road
- Alaska Railroad
- Runway



NAD 1983 Alaska Albers
Area from GPS
8/6/2023, 1459 hrs
atops_2023_AndersonComplex_AKFAS311899