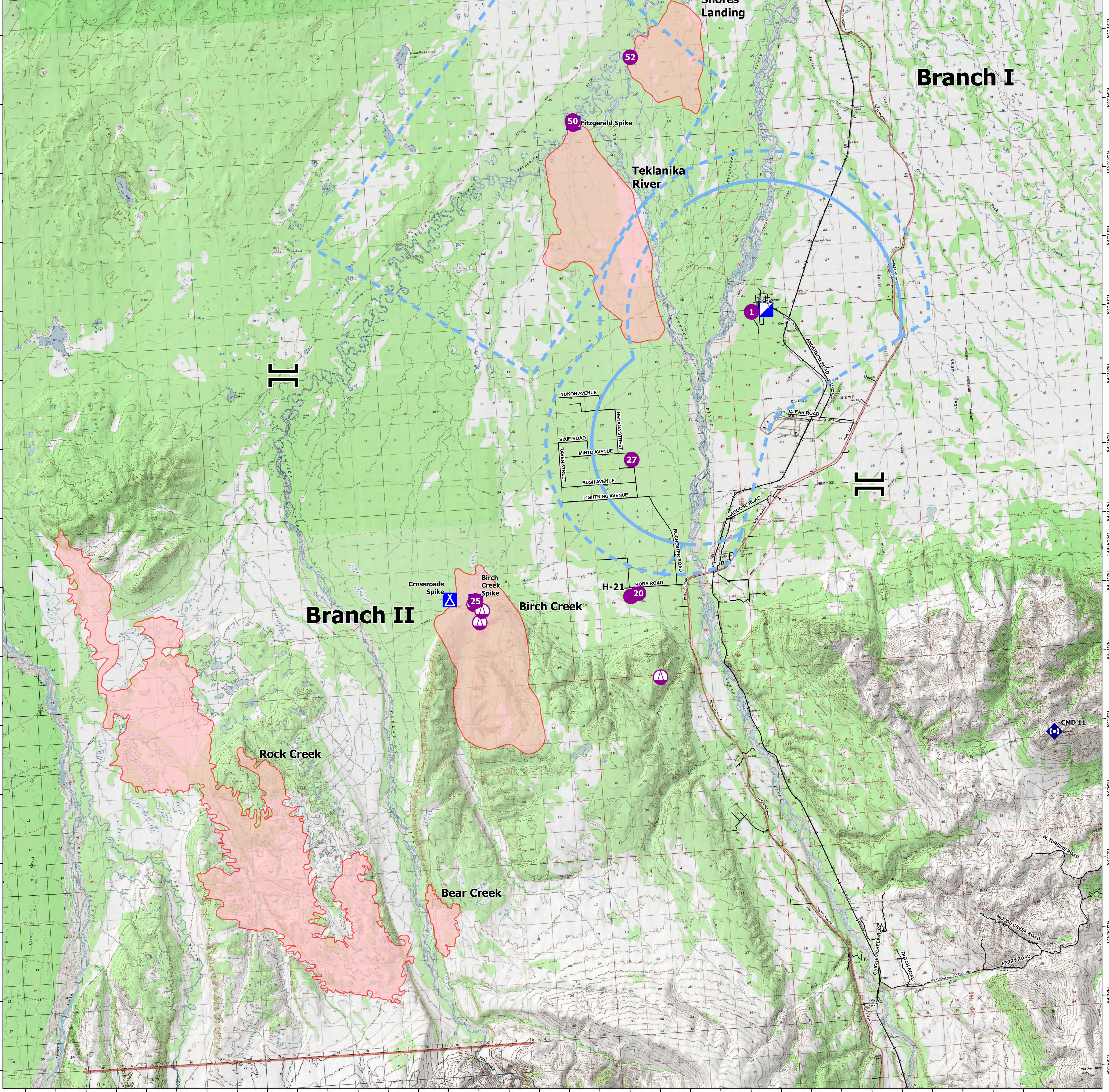


Air Operations

Anderson Complex

150°0'W 149°58'W 149°56'W 149°54'W 149°52'W 149°50'W 149°48'W 149°46'W 149°44'W 149°42'W 149°40'W 149°38'W 149°36'W 149°34'W 149°32'W 149°30'W 149°28'W 149°26'W 149°24'W 149°22'W 149°20'W 149°18'W 149°16'W 149°14'W 149°12'W 149°10'W 148°8'W 148°6'W 148°4'W 148°2'W 148°0'W 148°58'W 148°56'W 148°54'W 148°52'W 148°50'W 148°48'W 148°46'W

FC Point Type	Label	Latitude WGS84 DDM	Longitude WGS84 DDM
Camp	Birch Creek Spike	64° 12.736' N	149° 32.028' W
Camp	Crossroads Spike	64° 12.825' N	149° 33.752' W
Camp	Fitzgerald Spike	64° 26.402' N	149° 23.309' W
Helibase		64° 32.894' N	149° 05.397' W
Helispot	1	64° 20.558' N	149° 12.249' W
Helispot	20	64° 12.642' N	149° 21.146' W
Helispot	25	64° 12.739' N	149° 32.044' W
Helispot	27	64° 16.526' N	149° 20.970' W
Helispot	50	64° 26.454' N	149° 23.336' W
Helispot	52	64° 28.187' N	149° 19.172' W
Helispot	H-21	64° 12.566' N	149° 21.661' W
Repeater	CMD-4	64° 34.519' N	149° 05.115' W
Repeater	CMD 11	64° 07.761' N	148° 54.131' W
Sling Site		64° 26.367' N	149° 23.315' W
Sling Site		64° 12.650' N	149° 32.155' W
Sling Site		64° 12.109' N	149° 31.854' W
Sling Site		64° 10.170' N	149° 20.061' W
Sling Site		64° 12.440' N	149° 31.645' W



0 2.5 5
US Nautical Miles
Area as of 7 Aug, 0955 Hrs

Wildfire Daily Fire Perimeter	Incident Command Post	Local Road
Helispot	Camp	Alaska Railroad
Helibase	Repeater	Runway
Sling Site	Temporary Flight Restriction	
Branch Break	Parks Highway	

NAD 1983 Alaska Albers
Area from GPR
8/7/2023 15:47 Hrs
aleps_2023_AndersonComplex_AKFAS311899

Operations AKFAS311899 8 Aug 2023 50,833 acres