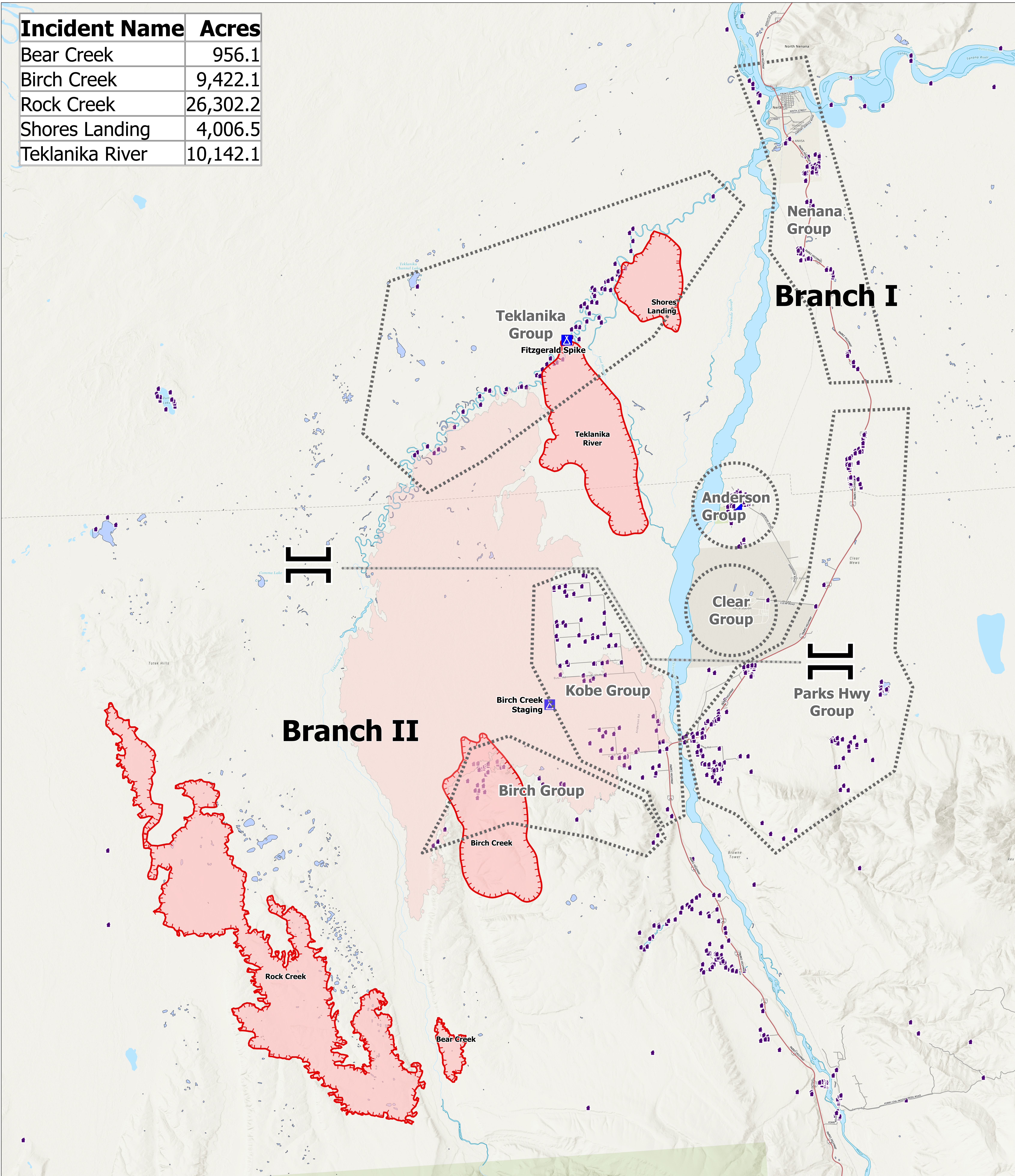


| Incident Name   | Acres    |
|-----------------|----------|
| Bear Creek      | 956.1    |
| Birch Creek     | 9,422.1  |
| Rock Creek      | 26,302.2 |
| Shores Landing  | 4,006.5  |
| Teklanika River | 10,142.1 |



- Structure
- Incident Command Post
- Wildfire Daily Fire Perimeter
- Camp
- Clear Fire
- Ops Group
- Branch Break Line
- Parks Highway
- Local Road
- Branch Break

0 2.5 5  
Miles  
Area as of 7 Aug, 0950 Hrs

