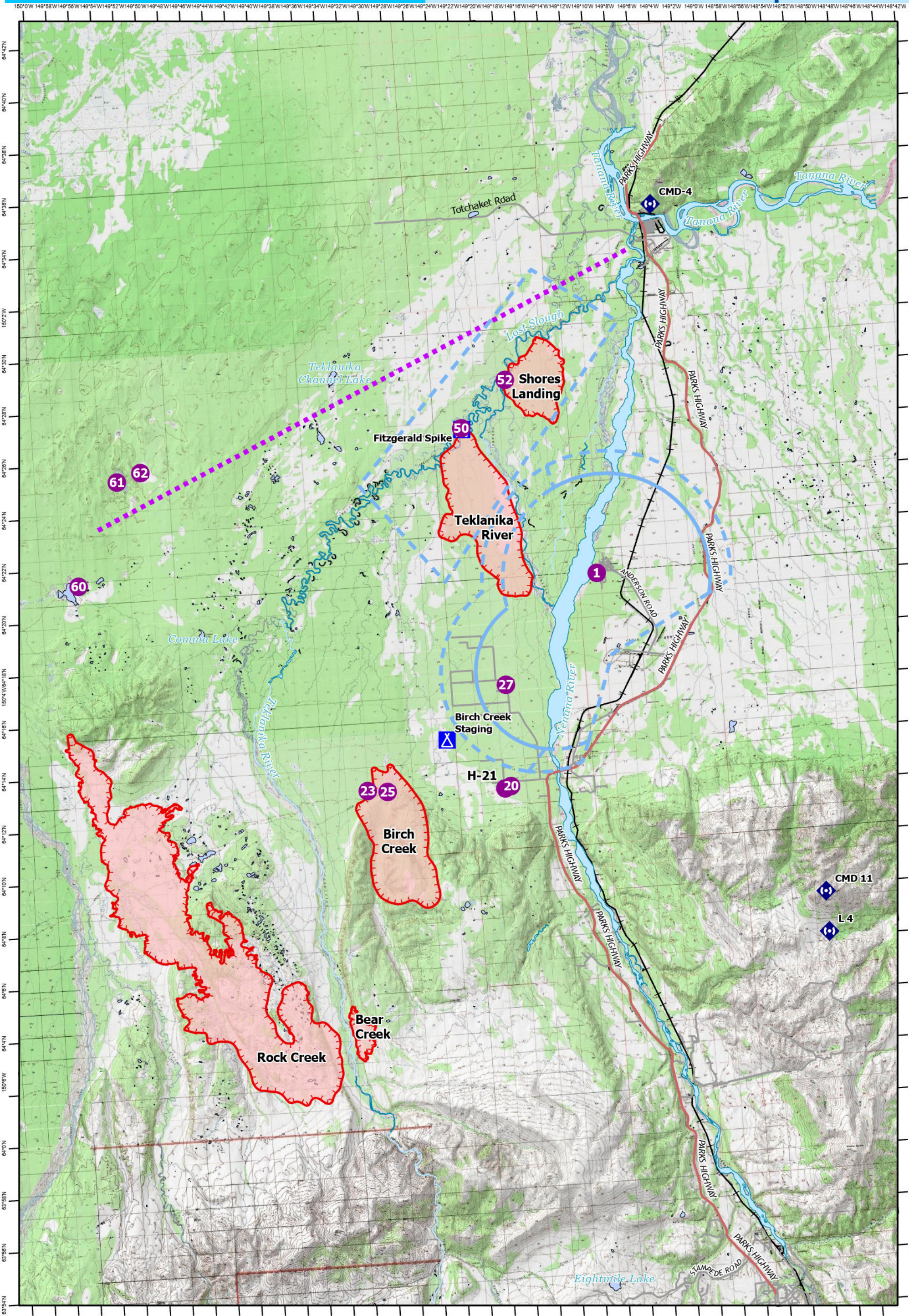


# Pilot

# Anderson Complex

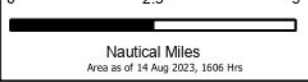
Operations AKFAS311899 18 Aug 2023 58,933 acres



- Helispot
- ▲ Camp
- ◆ Repeater
- ⋯ Aviation Route

- Temporary Flight Restriction
- Uncontained
- Alaska Railroad
- Parks Highway

- Local Road
- Wildfire Daily Fire Perimeter
- Runway



NAD 1983 Alaska Albers  
Area from GPS  
@ 1606 Hrs  
8/16/2023, 1601 Hrs  
file\_2023\_andersoncomplex\_AKFAS311899

<b>FC Point Type</b>	<b>Label</b>	<b>Latitude WGS84 DDM</b>	<b>Longitude WGS84 DDM</b>
Camp	Birch Creek Staging	64° 14.570' N	149° 26.488' W
Camp	Fitzgerald Spike	64° 26.402' N	149° 23.309' W
Helispot	1	64° 20.558' N	149° 12.249' W
Helispot	20	64° 12.642' N	149° 21.146' W
Helispot	23	64° 12.825' N	149° 33.784' W
Helispot	25	64° 12.739' N	149° 32.044' W
Helispot	27	64° 16.526' N	149° 20.970' W
Helispot	50	64° 26.454' N	149° 23.336' W
Helispot	52	64° 28.187' N	149° 19.172' W
Helispot	60	64° 21.343' N	149° 58.159' W
Helispot	61	64° 25.241' N	149° 54.206' W
Helispot	62	64° 25.549' N	149° 52.068' W
Helispot	H-21	64° 12.566' N	149° 21.661' W
Repeater	CMD-4	64° 34.519' N	149° 05.115' W
Repeater	CMD 11	64° 07.761' N	148° 54.131' W
Repeater	L 4	64° 06.211' N	148° 54.108' W