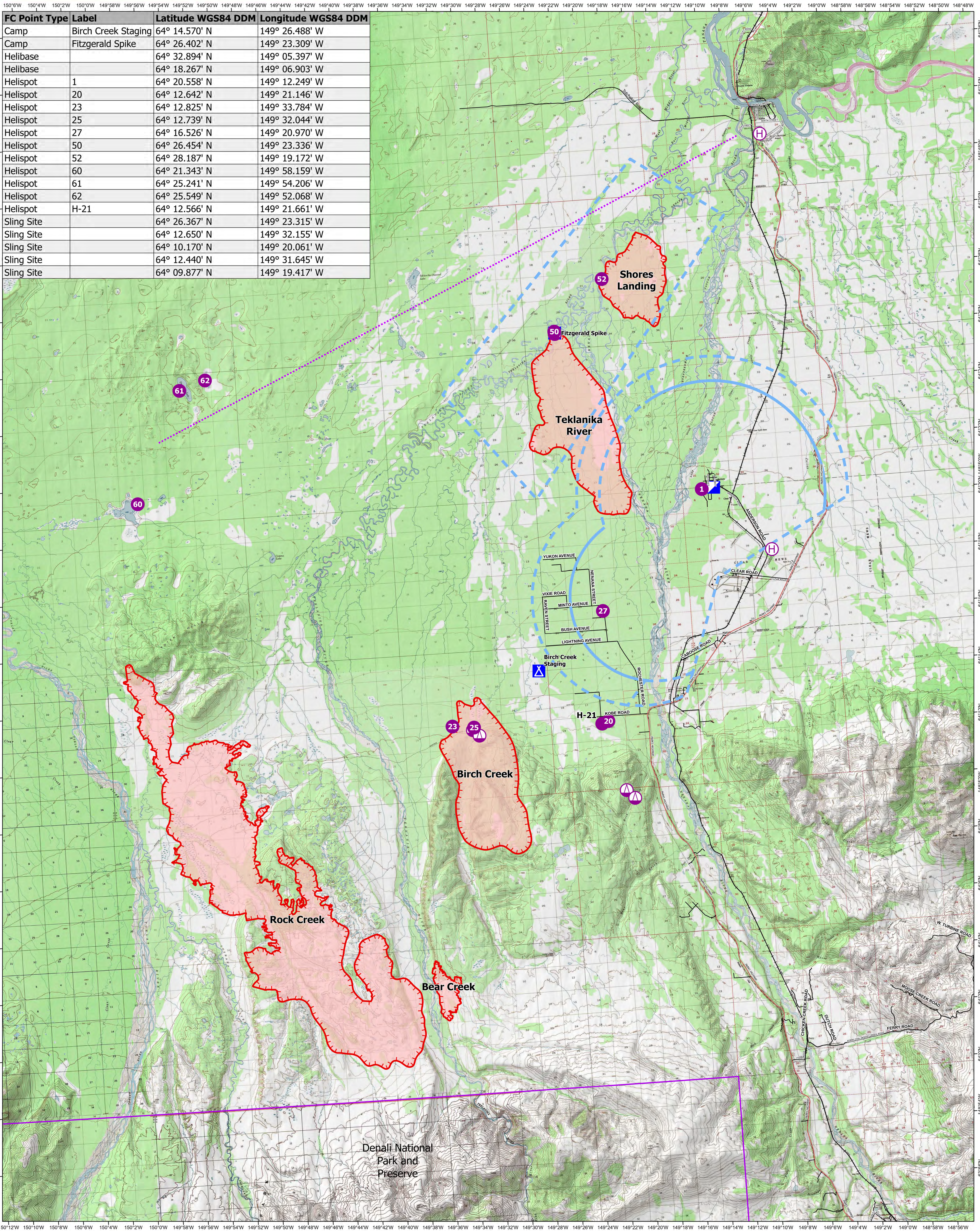


Air Operations

Anderson Complex



FC Point Type	Label	Latitude WGS84 DDM	Longitude WGS84 DDM
Camp	Birch Creek Staging	64° 14.570' N	149° 26.488' W
Camp	Fitzgerald Spike	64° 26.402' N	149° 23.309' W
Helibase		64° 32.894' N	149° 05.397' W
Helibase		64° 18.267' N	149° 06.903' W
Helispot	1	64° 20.558' N	149° 12.249' W
Helispot	20	64° 12.642' N	149° 21.146' W
Helispot	23	64° 12.825' N	149° 33.784' W
Helispot	25	64° 12.739' N	149° 32.044' W
Helispot	27	64° 16.526' N	149° 20.970' W
Helispot	50	64° 26.454' N	149° 23.336' W
Helispot	52	64° 28.187' N	149° 19.172' W
Helispot	60	64° 21.343' N	149° 58.159' W
Helispot	61	64° 25.241' N	149° 54.206' W
Helispot	62	64° 25.549' N	149° 52.068' W
Helispot	H-21	64° 12.566' N	149° 21.661' W
Sling Site		64° 26.367' N	149° 23.315' W
Sling Site		64° 12.650' N	149° 32.155' W
Sling Site		64° 10.170' N	149° 20.061' W
Sling Site		64° 12.440' N	149° 31.645' W
Sling Site		64° 09.877' N	149° 19.417' W

58,933 acres

20 Aug 2023

AKFAS311899

Operations

0 2.5 5
US Nautical Miles
Area as of 14 Aug 2023, 1606 Hrs

- Helispot
- Aviation Route
- Runway
- Helibase
- Temporary Flight Restriction
- Wildfire Daily Fire Perimeter
- Sling Site
- Parks Highway
- Denali National Park
- Incident Command Post
- Local Road
- Camp
- Alaska Railroad

NAD 1983 Alaska Albers
Area from GPS
8/16/2023 1617 Hrs
akops_2023_AndersonComplex_AKFAS311899