

# Lost Horse Creek

August 16, 2023

Wednesday

0700-2300



AK-FAS-311296

7331129600

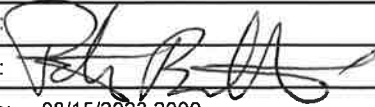

PNQG23 (1522)

QG23



IAP, Maps, Check-in, Forms, CTRS/Shift Tickets,  
Extensions, Demob Instructions

## INCIDENT OBJECTIVES (ICS 202)

<b>1. Incident Name:</b>	<b>2. Operational Period: DAY</b>	
LOST HORSE CREEK	Date/Time From: 08/16/2023 0700      WED	Date/Time To: 08/16/2023 2300      WED
<b>3. Objective(s):</b>		
<p>All Fires</p> <ul style="list-style-type: none"> <li>· Develop and implement sound strategies and tactics that prioritize firefighter safety and take into account risk and probability of success.</li> <li>· Maintain and enhance relationships with cooperators and the local public by providing accurate and timely fire information.</li> <li>· Ensure costs are accurately tracked and prepare financial and documentation packages in accordance with agency requirements.</li> </ul> <p>296 Lost Horse Creek - Use Full Suppression, Confine, and Point Protection strategies to:</p> <ul style="list-style-type: none"> <li>· Protect residences and other structures in the Haystack, Olnes, and Himalaya subdivisions and in the Elliott and Steese Highway corridors. Coordinate evacuation planning and notifications with the Fairbanks North Star Borough</li> <li>· Protect Alaska Native Allotments along the Elliott Highway from the effects of fire and fire suppression.</li> <li>· Provide for safe transportation along the Elliot Highway and needed access along the Trans-Alaska Pipeline corridor.</li> <li>· Protect BLM recreational cabins in the White Mountains Recreational Area.</li> <li>· Protect UAF research sites along Caribou Creek from the effects of fire and fire suppression.</li> </ul> <p>271 Our Creek, 250 Olnes Pond, 255 Sargent Creek, 265 Treasure Creek, 266 Hayes Creek, 320 Murphy Creek - Monitor these fires. Prevent any additional spread if they become active again.</p> <p>Initial Attack - Provide Initial Attack response within the Fairbanks Area portion of the TFR area for fire 296. Assist the local area with initial attack outside the TFR upon request if resources are available.</p>		
<b>4. Operational Period Command Emphasis:</b>		
It is looking like a damp day today. Adjust your operational pace accordingly and take the necessary measures to keep people safe.		
<b>General Situational Awareness:</b>		
Your work location can be influenced by changes in the weather. Will your LCES situation remain secure? As the weather changes, so will the fire behavior and the influences upon your safety plan. Double check your safety plan for weakness, make sure your plan is better than the one the fire has!		
<b>5. Site Safety Plan Required?</b> Yes <input type="checkbox"/> No <input checked="" type="checkbox"/>		
Approved Site Safety Plan(s) Located		
<b>6. Incident Action Plan</b> (the items checked below are included in this Incident Action Plan):		
<input checked="" type="checkbox"/> ICS 202	<input type="checkbox"/> ICS 207	Other Attachments:
<input checked="" type="checkbox"/> ICS 203	<input type="checkbox"/> ICS 208	<input type="checkbox"/> _____
<input checked="" type="checkbox"/> ICS 204	<input checked="" type="checkbox"/> ICS 220	<input type="checkbox"/> _____
<input checked="" type="checkbox"/> ICS 205	<input type="checkbox"/> Map/Chart	<input type="checkbox"/> _____
<input type="checkbox"/> ICS 205A	<input checked="" type="checkbox"/> Weather Forecast/Tides/Currents	<input type="checkbox"/> _____
<input checked="" type="checkbox"/> ICS 206		
<b>7. Prepared by:</b> DARREN FINLEY	<b>Position/Title:</b> PSC2	<b>Signature:</b> 
<b>8. Approved by Incident Commander:</b>	<b>Name:</b> PETER BUTTERI	<b>Signature:</b> 
ICS 202	IAP Page	Date/Time:      08/15/2023 2000

## ORGANIZATION ASSIGNMENT LIST (ICS 203)

<b>1. Incident Name:</b>		<b>2. Operational Period: DAY</b>	
LOST HORSE CREEK		Date/Time From: 08/16/2023 0700 WED	Date/Time To: 08/16/2023 2300 WED
<b>3. Incident Commander(s) and Command Staff:</b>		COMMUNICATIONS UNIT	MIKE NORMAN
IC/UC	PETER BUTTERI	MEDICAL UNIT	GREG CHAVEZ; MEREDITH LUND CAT STEVENS (T)
DEPUTY	CHUCK RUSSELL	FOOD UNIT	DARREN BALLENTINE
SAFETY OFFICER	TOM GREILING; TOM HUDSON JEFF HAMMES	<b>7. Operations Section:</b>	
INFORMATION OFFICER	EMERY JOHNSON; BRANDALYN VONK	FIELD OPERATIONS	TRENT GIRARD KYLE COWAN
LIAISON OFFICER	MICHELLE WESTON ; ERICA LAMB (T) ADAM KOHLEY (T)	PLANNING OPERATIONS	KAREN SCHOLL BRIAN TAI (T)
<b>4. Agency/Organization Representative(s):</b>			
<b>Agency/Organization</b>	<b>Name</b>	DIVISION/GROUP	J MILES BOND OMAR FLORES (T)
ALASKA DNR AA	JEREMY DOUSE	DIVISION/GROUP	P CHRIS HARPER BRYCE HENDERSON (T)
ALASKA DNR AREP	RYAN MCCULLEY	DIVISION/GROUP	W JAMIE MAYOR BEVIN PROTAS (T)
ALASKA DNR NORTHERN REGION FMO	ROB ALLEN	<b>7b. Air Operations Branch:</b>	
BLM AA	TIM HAMMOND	AIR OPS BRANCH DIRECTOR	MIKE MAGUIRE
BLM AREP	BILL HEDMAN	AIR SUPPORT SUPERVISOR	KAY KUDO (T) DAN FAIRCHILD (T)
BLM FMO	WILLIE BRANSON	<b>8. Finance/Administration Section:</b>	
BIA AA	LYNN POLACCA	CHIEF	BARB HAXBY ; ROSALIND SORRELL KRISANDA KAPPUS (T)
BIA AFMO	CHRIS FRIAR	TIME UNIT	ANNETTE HOYER
<b>5. Planning Section:</b>		COMPENSATION UNIT	REBECCA HOWARD (T)
CHIEF	DARREN FINLEY JENNIFER BARNES (T)	COST UNIT	JIM ELEAZER
RESOURCES UNIT	MATTHEW REECE SUSANNA NANCARROW (T)		
SITUATION UNIT	SCOTT BLISS		
DOCUMENTATION UNIT	NANCY SALMINEN		
DEMOBILIZATION UNIT	FRED NOACK (V)		
FIRE BEHAVIOR ANALYST	JOHN STUCHELL		
INCIDENT METEOROLOGIST	AVIVA BRAUN		
GIS SPECIALIST	ANDY KIRSCH ; JESSICA HADDON (T) ZACH DUFAULT (T) ; CONNOR EDICK (T)		
TECHNOLOGY SUPPORT SPECIALIST	CALVIN MOSES HANNAH SEMOCK		
<b>6. Logistics Section:</b>			
CHIEF	MATT ROBINETT TERRI BERRIE		
SUPPLY UNIT	DUANE BENNETT		
FACILITIES UNIT	JOSHUA SMAIL		
GROUND SUPPORT UNIT	ROBERT EMRICK		
<b>9. Prepared By:</b>	<b>Name:</b> MATTHEW REECE	<b>Position/Title:</b> RESL	<b>Signature:</b>
ICS 203	IAP Page	<b>Date/Time:</b> 08/15/2023 2000	



## INCIDENT Weather Forecast



**FORECAST NO:** 10  
**SHIFT DATE:** August 16, 2023  
**FORECAST ISSUED:** August 15, 2023 @ 1800

**NAME OF FIRE:** Lost Horse Creek Fire  
**SIGNED:** Aviva Braun 208-473-9256  
**Incident Meteorologist**

**WEATHER DISCUSSION:** Patchy morning fog in the valleys will yield to increasing cloud and shower coverage over the course of the day ahead of a 1900 cold front (+/- 2 hours). Looking for a wetting rain across a majority of the fire area, mainly falling as the front approaches. Winds increase steadily over the course of the afternoon from the northwest ahead of the front, and will continue to do so in its wake. Thunderstorms are possible in the late afternoon and evening with the frontal passage.

Looking ahead, winds will remain elevated through Friday, with gusts to 30 mph likely.

**WEATHER TODAY:**

**SKY/WEATHER:** Patchy morning fog in the valleys. Increasing cloud cover and shower coverage as a front approaches the fire area. Light showers early in the day will give way to heavier showers and thunderstorms with the front in the late afternoon/evening. Most of the fire area should receive a wetting rain by the end of the operational period.

**MAX TEMP:** 64-69°                      **MIN HUMIDITY:** 56-64%

**CHANCE OF SHOWERS/THUNDERSTORMS:** 100/60%                      **LAL:** 2

**CHANCE OF WETTING RAIN:** 50%

**20FT WINDS:** Light and terrain-driven to start the day. NW 5-10 mph before 1300, with gusts to 15 mph by 1600. NW 10-15 mph with gusts 20-25 mph around 2200. Gusty, erratic winds near thunderstorms.

**TRANSPORT WIND:** ENE 10-15 mph, turning NW 10-20 mph before 1900, behind the front.

**MIXING HEIGHT:** Rising to 18000 ft

**VISIBILITY:** Morning fog will reduce visibilities, as will heavy evening rainfall; otherwise unrestricted.

**INVERSION:** Weak inversion will break after 1000

**WEATHER TONIGHT:**

**SKY/WEATHER:** Mostly cloudy. Light rain showers continue overnight with a few hundredths expected by morning.

**MIN TEMP:** 46-50°

**MAX HUMIDITY:** 80-90%

**CHANCE OF SHOWERS/THUNDERSTORMS:** 40/5%                      **LAL:** 1

**CHANCE OF WETTING RAIN:** 5%

**20FT WINDS:** NW 10-15 mph, gusts 20-25 mph

**TRANSPORT WIND:** NW 25-30 mph

**STABILITY/INVERSION:** None

**WEATHER THURSDAY:**

**SKY/WEATHER:** Cloudy and windy conditions. Light showers are possible in the morning and again in the afternoon.

**MAX TEMP:** 57-62°                      **MIN HUMIDITY:** 65-75%

**CHANCE OF SHOWERS/THUNDERSTORMS:** 40/10%                      **LAL:** 1

**CHANCE OF WETTING RAIN:** 10%

**20FT WINDS:** NW 10-15 mph with gusts 20-30 mph, turning W after 1000.

**TRANSPORT WIND:** West 20-30 mph

**MIXING HEIGHT:** 7000 ft

**VISIBILITY:** Unrestricted.

**INVERSION:** 7000 ft

**EXTENDED OUTLOOK (FRIDAY THROUGH MONDAY):**

Seasonable temperatures and gusty southwesterly winds through the end of the week. Moist conditions will bring increased humidities (above 60%) and daily chances for afternoon showers and pop-up thunderstorms - best chances come Friday.

To send observations, or ask questions: 208-473-9256 or [aviva.braun@noaa.gov](mailto:aviva.braun@noaa.gov)

# **FIRE BEHAVIOR FORECAST**

**FORECAST NUMBER:** 12

**NAME OF FIRE:** Lost Horse Creek

**AGENCIES:** Alaska DOF

**FOR:** August 16, 2023

**SHIFT:** Day

**FORECAST ISSUED:** August 15, 2023 **TIME:** 1800 **FBAN:** *John E Stuchell* **PH:** 509-993-8304

---

## **WEATHER SUMMARY:**

**Max Temp:** 69 F, **Min RH:** 56 %

**Wind:** Light and terrain-driven to start the day. NW 5-10 mph before 1300, with gusts to 15 mph by 1600. NW 10-15 mph with gusts 20-25 mph around 2200. Gusty, erratic winds near thunderstorms.

See Attached Fire Weather Forecast for more details

*PLEASE SEND IN WEATHERS OBSERVATIONS AT THE ABOVE PHONE NUMBER*

---

## **FIRE BEHAVIOR**

### **GENERAL INPUTS:**

Fuel - C-2 (Boreal Spruce)

	<b>FFMC</b>	<b>DMC</b>	<b>DC</b>	<b>ISI</b>	<b>BUI</b>	<b>ELEVATION</b>
Caribou Peak RAWS:	Low	Low	Moderate	Low	Low	2517 FT
Fairbanks RAWS:	High	High	Very High	High	High	449 FT
Chatankia RAWS:	High	High	Very High	High	High	1626 FT
Livengood RAWS:	High	Low	Very High	High	Medium	450 FT

The Drought Code (DC) remains very high other than at the Caribou Peak RAWS.

If fuels receive no wetting rains in the Boreal Spruce (C-2) they will still be available and burn.

The Southwest-Western edge of the fire in Div. J and P have the greatest potential.

Strong sustained winds will be needed for any rapid-fire growth.

---

### **AIR OPERATIONS:**

Flight operations stay alert for thunderstorms as they move in the area for strong, gusty winds and heavy rain.

---

### **SAFETY:**

Along the perimeter of the fire the deep burning and wind could make weaken trees become overhead hazards.

**Division/Group Assignment List (ICS 204 WF)**  
**Controlled Unclassified Information//Basic**

<b>1. Incident Name:</b>			<b>3.</b>			
LOST HORSE CREEK			<b>Branch:</b>		<b>Division/Group</b>	
<b>2. Operational Period:</b> DAY					<b>J</b>	
Date/Time From: 08/16/2023 0700 WED		Date/Time To: 08/16/2023 2300 WED				
<b>4. Operations Personnel</b>						
<b>FIELD OPERATIONS</b>		TRENT GIRARD (8/16) KYLE COWAN (8/27)		<b>PLANNING OPERATIONS</b>		KAREN SCHOLL (8/17) BRIAN TAI (T) (8/17)
<b>AIR OPERATIONS</b>		MIKE MAGUIRE (8/19)		<b>DIVISION/GROUP SUPERVISOR</b>		MILES BOND (8/18) OMAR FLORES (T) (8/18)
<b>5. Resources Assigned this Period</b>						
Strike Team / Task Force / Resource Designator		LWD	Leader	Number Persons	Drop Off PT./Time	Pick Up PT./Time
O-2.12 TFLD		08/19	JOHN BRODBECK	1	OLNES POND/0700	OLNES POND/2300
O-2.65 TFLD(T)		08/18	KEITH MITCHELL	1	OLNES POND/0700	OLNES POND/2300
O-2.66 TFLD (T)		08/18	KRISTY HAJNY	1	OLNES POND/0700	OLNES POND/2300
O-2.63 HEQB		08/20	DAN HORWATH	1	OLNES POND/0700	OLNES POND/2300
C-8 CRW1 LASSEN IHC		08/20	ALLEN SCHULTZE	21	OLNES POND/0700	OLNES POND/2300
C-13 CRW1 MIDNIGHT SUN IHC		08/26	ANDREW CULBERTSON	20	H-20 SPIKE/0700	H-20 SPIKE/2300
C-5 CRW2 WYEAST		08/22	DAVE FREEMAN	20	OLNES POND/0700	OLNES POND/2300
C-12 CRW2 BIG RIVER		08/18	MAURICE TURET	19	OLNES POND/0700	OLNES POND/2300
C-7 CRW2 WEST COAST REFORESTATION		08/24	HOMERO HERNANDEZ	20	OLNES POND/0700	OLNES POND/2300
E-69 ENG6 FORREST FIRE #1		08/23	MATTHEW BRADY	2	OLNES POND/0700	OLNES POND/2300
E-71 ENG6 NORTH STAR VFD		08/23	ANDRE DASILVA	2	OLNES POND/0700	OLNES POND/2300
E-59 WTS2 MERKES BUILDERS		08/22	DRAIDEN MCMINN	2	OLNES POND/0700	OLNES POND/2300
E-1 DZR1 TIMBERLINE		08/16	NATHANIEL BATES	2	HAYSTACK STAGING/0700	HAYSTACK STAGING/2300
O-60 AEMF		08/21	KARIN BUTTERFIELD	1	HAYSTACK STAGING/0700	HAYSTACK STAGING/2300
E-53 AMB2 DELTA MEDICAL		08/21	RICKY HOLLAND	2	HAYSTACK STAGING/0700	HAYSTACK STAGING/2300
<b>8. Division/Group Communication Summary</b>						
Function	Channel	RX Frequency N/W	RX Tone/NAC	TX Frequency N/W	TX Tone/NAC	Mode
COMMAND	7	170.4500	123.0	168.1000	123.0	
TACTICAL	2	168.2000	123.0	168.2000	123.0	
TACTICAL	11	159.3750		159.3750		
AIR TO GROUND	13	163.1500		163.1500		
<b>9. Prepared By (Resource Unit Leader)</b>			<b>Approved By (Planning Section Chief)</b>		<b>Date</b>	<b>Time</b>
MATTHEW REECE, RESL			DARREN FINLEY, PSC2		08/15/2023	2000

## Division/Group Assignment List (ICS 204 WF)

Controlled Unclassified Information//Basic

<b>1. Incident Name:</b>				<b>3.</b>			
LOST HORSE CREEK				<b>Branch:</b>		<b>Division/Group</b>	
<b>2. Operational Period: DAY</b>							
Date/Time From: 08/16/2023 0700		Date/Time To: 08/16/2023 2300		<b>J</b>			
WED		WED					
<b>4. Operations Personnel</b>							
<b>FIELD OPERATIONS</b>		TRENT GIRARD (8/16) KYLE COWAN (8/27)		<b>PLANNING OPERATIONS</b>		KAREN SCHOLL (8/17) BRIAN TAI (T) (8/17)	
<b>AIR OPERATIONS</b>		MIKE MAGUIRE (8/19)		<b>DIVISION/GROUP SUPERVISOR</b>		MILES BOND (8/18) OMAR FLORES (T) (8/18)	
<b>5. Resources Assigned this Period</b>							
Strike Team / Task Force / Resource Designator		LWD	Leader	Number Persons	Drop Off PT./Time	Pick Up PT./Time	
O-52 AEMF		08/23	WINTER WEST	1	HAYSTACK STAGING/0700	HAYSTACK STAGING/2300	
<b>6. Control Operations/Work Assignments:</b>							
<p>Task: Scout and assess options to advance containment lines to the west using direct and/or indirect tactics. Reinforce control lines, mop up and secure line as appropriate.</p> <p>Purpose: Minimize fire spread to the south.</p> <p>End State: Residents and improvements in the Haystack Subdivision, Himalaya Subdivision, and values along the Elliott Hwy. are protected from fire impacts.</p>							
<b>7. Special Instructions:</b>							
<p>* IA Designated Resource</p> <p>Safety Hammes available to all divisions. Safety Nash will cover Div J/P.</p> <p>UTV: E-39, E-42, E-41, E-13, E-12, E-68, E-84, E-45, E-56 (medic), E-82 (safety)</p> <p>AMBU staged at Middle Fork Staging</p>							
<b>8. Division/Group Communication Summary</b>							
Function	Channel	RX Frequency N/W	RX Tone/NAC	TX Frequency N/W	TX Tone/NAC	Mode	
COMMAND	7	170.4500	123.0	168.1000	123.0		
TACTICAL	2	168.2000	123.0	168.2000	123.0		
TACTICAL	11	159.3750		159.3750			
AIR TO GROUND	13	163.1500		163.1500			
<b>9. Prepared By (Resource Unit Leader)</b>			<b>Approved By (Planning Section Chief)</b>			<b>Date</b>	<b>Time</b>
MATTHEW REECE, RESL			DARREN FINLEY, PSC2			08/15/2023	2000

## Division/Group Assignment List (ICS 204 WF)

Controlled Unclassified Information//Basic

<b>1. Incident Name:</b>			<b>3.</b>			
LOST HORSE CREEK			<b>Branch:</b>		<b>Division/Group</b>	
<b>2. Operational Period: DAY</b>						
Date/Time From: 08/16/2023 0700      WED		Date/Time To: 08/16/2023 2300      WED		<b>P</b>		
<b>4. Operations Personnel</b>						
<b>FIELD OPERATIONS</b>		TRENT GIRARD (8/16) KYLE COWAN (8/27)		<b>PLANNING OPERATIONS</b>		
				KAREN SCHOLL (8/17) BRIAN TAI (T) (8/17)		
<b>AIR OPERATIONS</b>		MIKE MAGUIRE (8/19)		<b>DIVISION/GROUP SUPERVISOR</b>		
				CHRIS HARPER (8/22) BRYCE HENDERSON (T) (8/25)		
<b>5. Resources Assigned this Period</b>						
Strike Team / Task Force / Resource Designator		LWD	Leader	Number Persons	Drop Off PT./Time	Pick Up PT./Time
O-4 TFLD		08/17	MICHAEL LEHMAN	1	OLNES POND/0700	OLNES POND/2300
O-5 TFLD (T)		08/17	MARC SASS	1	OLNES POND/0700	OLNES POND/2300
O=95 TFLD		08/18	MITCH LINEBARGER	1	OLNES POND/0700	OLNES POND/2300
* C-10 CRW1 PIONEER PEAK IHC		08/26	KRIS BAUMGARTNER	24	H-20 SPIKE/0700	H-20 SPIKE/2300
* O-14 TFLD		08/19	JEFFREY WIEDOW	1	OLNES POND/0700	OLNES POND/2300
* O-15 TFLD (T)		08/19	JAMES BACHELOR	1	OLNES POND/0700	OLNES POND/2300
* E-18 ENG4 DOF AK42		08/18	SHANE SEMENUK	3	OLNES POND/0700	OLNES POND/2300
* E-48 ENG6 DOF AK62		08/16	COREY AUGER	1	OLNES POND/0700	OLNES POND/2300
E-65 MBM2 DENALI NORTHWEST		08/24	DAVID ALDRICH	1	OLNES POND/0700	OLNES POND/2300
O-83 SOF2		08/24	THOMAS NASH	1	OLNES POND/0700	OLNES POND/2300
O-82 AEMF		08/23	NICK TALLMAN	1	OLNES POND/0700	OLNES POND/2300
<b>8. Division/Group Communication Summary</b>						
Function	Channel	RX Frequency N/W	RX Tone/NAC	TX Frequency N/W	TX Tone/NAC	Mode
COMMAND	7	170.4500	123.0	168.1000	123.0	
TACTICAL	5	166.7750	123.0	166.7750	123.0	
TACTICAL	11	159.3750		159.3750		
AIR TO GROUND	13	163.1500		163.1500		
<b>9. Prepared By (Resource Unit Leader)</b>			<b>Approved By (Planning Section Chief)</b>		<b>Date</b>	<b>Time</b>
MATTHEW REECE, RESL			DARREN FINLEY, PSC2		08/15/2023	2000



## Division/Group Assignment List (ICS 204 WF)

Controlled Unclassified Information//Basic

<b>1. Incident Name:</b>			<b>3.</b>			
LOST HORSE CREEK			<b>Branch:</b>	<b>Division/Group</b>  <b>P</b>		
<b>2. Operational Period: DAY</b>						
Date/Time From:	08/16/2023 0700	WED	Date/Time To:	08/16/2023 2300	WED	
<b>4. Operations Personnel</b>						
<b>FIELD OPERATIONS</b>	TRENT GIRARD (8/16) KYLE COWAN (8/27)			<b>PLANNING OPERATIONS</b>	KAREN SCHOLL (8/17) BRIAN TAI (T) (8/17)	
<b>AIR OPERATIONS</b>	MIKE MAGUIRE (8/19)			<b>DIVISION/GROUP SUPERVISOR</b>	CHRIS HARPER (8/22) BRYCE HENDERSON (T) (8/25)	
<b>6. Control Operations/Work Assignments:</b>						
<p>Task: Advance indirect line construction from the Div J/P break west to the Elliott Hwy. Prepare indirect line for future firing operations. Assess and implement structure protection along the Elliott Hwy. between MP 12 and MP 32.</p> <p>Purpose: Protect values to the south and east of current fire footprint along the Elliott Hwy.</p> <p>End State: Values are identified and protected from fire impacts.</p>						
<b>7. Special Instructions:</b>						
<p>* IA Designated Resource</p> <p>Safety Hammes available to all divisions. Safety Nash will cover Div J/P</p> <p>READ Lamb</p> <p>UAS Module working in Div P</p> <p>UTV E-44, E-67, E-14, E-83 (medic), E-76 (UAS)</p> <p>AMBU staged at Middle Fork Staging</p>						
<b>8. Division/Group Communication Summary</b>						
Function	Channel	RX Frequency N/W	RX Tone/NAC	TX Frequency N/W	TX Tone/NAC	Mode
COMMAND	7	170.4500	123.0	168.1000	123.0	
TACTICAL	5	166.7750	123.0	166.7750	123.0	
TACTICAL	11	159.3750		159.3750		
AIR TO GROUND	13	163.1500		163.1500		
<b>9. Prepared By (Resource Unit Leader)</b>			<b>Approved By (Planning Section Chief)</b>		<b>Date</b>	<b>Time</b>
MATTHEW REECE, RESL			DARREN FINLEY, PSC2		08/15/2023	2000

**Division/Group Assignment List (ICS 204 WF)**  
**Controlled Unclassified Information//Basic**

<b>1. Incident Name:</b>			<b>3.</b>			
LOST HORSE CREEK			<b>Branch:</b>		<b>Division/Group</b>	
<b>2. Operational Period:</b> DAY			<b>W</b>			
Date/Time From: 08/16/2023 0700	WED	Date/Time To: 08/16/2023 2300				WED
<b>4. Operations Personnel</b>						
<b>FIELD OPERATIONS</b>		TRENT GIRARD (8/16) KYLE COWAN (8/27)	<b>PLANNING OPERATIONS</b>		KAREN SCHOLL (8/17) BRIAN TAI (T) (8/17)	
<b>AIR OPERATIONS</b>		MIKE MAGUIRE (8/19)	<b>DIVISION/GROUP SUPERVISOR</b>		JAMIE MAYOR (8/25) BEVIN PROTAS (T) (8/25)	
<b>5. Resources Assigned this Period</b>						
Strike Team / Task Force / Resource Designator	LWD	Leader	Number Persons	Drop Off PT./Time	Pick Up PT./Time	
O-8 TFLD	08/17	JAMES KUJALA	1	OLNES POND/0700	OLNES POND/2300	
O-9 TFLD (T)	08/17	BRYCE BERKLUND	1	OLNES POND/0700	OLNES POND/2300	
O-48 TFLD	08/17	KIRBY DERNOVSEK	1	OLNES POND/0700	OLNES POND/2300	
O-49 TFLD (T)	08/24	JOHN HUNT	1	OLNES POND/0700	OLNES POND/2300	
O-107 TFLD	08/17	MICHAEL HAISTEN	1	OLNES POND/0700	OLNES POND/2300	
O-124 STCR (T)	08/28	EVAN TRUMBOWER	1	OLNES POND/0700	OLNES POND/2300	
C-11 CRW2 CATG	08/16	WALTER ANSAKNOK	20	OLNES POND/0700	OLNES POND/2300	
C-4 CRW2 NULATO HILLS 2	08/22	EDWARD GEORGE	20	OLNES POND/0700	OLNES POND/2300	
C-9 CRW2 FRANCO REFORESTATION	08/24	JOSHUA FRANCO	20	LINE SPIKE/0700	LINE SPIKE/2300	
C-17 CLEARWATER	08/20	DUANE THOMPSON	20	LINE SPIKE/0700	LINE SPIKE/2300	
E-80 VUTV RAGNAROK OFF ROAD	08/21	MARK JOHNSON	1	OLNES POND/0700	OLNES POND/2300	
E-4 DZR2 TIMBERLINE	08/16	MATT GAGNON	2	OLNES POND/0700	OLNES POND/2300	
O-25 SOFR	08/19	JEFF KERR	1	OLNES POND/0700	OLNES POND/2300	
O-36 EMPF	08/18	HEATHER BUBEN	1	OLNES POND/0700	OLNES POND/2300	
O-51 AEMF	08/20	DWAYNE EAGER	1	LINE SPIKE/0700	LINE SPIKE/2300	
O-120 AEMF	08/28	CHRISTOPH REIER	1	LINE SPIKE/0700	LINE SPIKE/2300	
<b>6. Control Operations/Work Assignments:</b>						
<b>8. Division/Group Communication Summary</b>						
Function	Channel	RX Frequency N/W	RX Tone/NAC	TX Frequency N/W	TX Tone/NAC	Mode
COMMAND	7	170.4500	123.0	168.1000	123.0	
TACTICAL	1	168.0500	123.0	168.0500	123.0	
TACTICAL	11	159.3750		159.3750		
AIR TO GROUND	13	163.1500		163.1500		
<b>9. Prepared By (Resource Unit Leader)</b>		<b>Approved By (Planning Section Chief)</b>		<b>Date</b>	<b>Time</b>	
MATTHEW REECE, RESL		DARREN FINLEY, PSC2		08/15/2023	2000	

## Division/Group Assignment List (ICS 204 WF)

Controlled Unclassified Information//Basic

<b>1. Incident Name:</b>			<b>3.</b>			
LOST HORSE CREEK			<b>Branch:</b>	<b>Division/Group</b>		
<b>2. Operational Period: DAY</b>						
Date/Time From: 08/16/2023 0700      WED		Date/Time To: 08/16/2023 2300      WED		<b>W</b>		
<b>4. Operations Personnel</b>						
<b>FIELD OPERATIONS</b>		TRENT GIRARD (8/16) KYLE COWAN (8/27)		<b>PLANNING OPERATIONS</b>		KAREN SCHOLL (8/17) BRIAN TAI (T) (8/17)
<b>AIR OPERATIONS</b>		MIKE MAGUIRE (8/19)		<b>DIVISION/GROUP SUPERVISOR</b>		JAMIE MAYOR (8/25) BEVIN PROTAS (T) (8/25)
<b>6. Control Operations/Work Assignments:</b>						
<p>Task: Reinforce control lines. Mop up and secure as appropriate.                  Purpose: Minimize fire spread to the South and East of current footprint.                  End State: Improvements and values in the Haystack Subdivision are protected from fire.</p>						
<b>7. Special Instructions:</b>						
<p>Safety Hammes available to all divisions.</p> <p>UTV                  E-77, E-68, E-95, E-99, E-87, E-40 (safety), E-86 (medic), E-81 (medic)</p> <p>AMBU Staged at Middle Fork Staging</p>						
<b>8. Division/Group Communication Summary</b>						
Function	Channel	RX Frequency N/W	RX Tone/NAC	TX Frequency N/W	TX Tone/NAC	Mode
COMMAND	7	170.4500	123.0	168.1000	123.0	
TACTICAL	1	168.0500	123.0	168.0500	123.0	
TACTICAL	11	159.3750		159.3750		
AIR TO GROUND	13	163.1500		163.1500		
<b>9. Prepared By (Resource Unit Leader)</b>			<b>Approved By (Planning Section Chief)</b>		<b>Date</b>	<b>Time</b>
MATTHEW REECE, RESL			DARREN FINLEY, PSC2		08/15/2023	2000

**Division/Group Assignment List (ICS 204 WF)**  
**Controlled Unclassified Information//Basic**

<b>1. Incident Name:</b>			<b>3.</b>			
LOST HORSE CREEK			<b>Branch:</b>		<b>Division/Group</b>	
<b>2. Operational Period: DAY</b>			<b>STAGING</b>			
Date/Time From: 08/16/2023 0700 WED		Date/Time To: 08/16/2023 2300 WED				
<b>4. Operations Personnel</b>						
<b>FIELD OPERATIONS</b>		TRENT GIRARD (8/16) KYLE COWAN (8/27)		<b>PLANNING OPERATIONS</b>		KAREN SCHOLL (8/17) BRIAN TAI (T) (8/17)
<b>AIR OPERATIONS</b>		MIKE MAGUIRE (8/19)		<b>STAGING AREA MANAGER</b>		BILL TRIPP
<b>5. Resources Assigned this Period</b>						
Strike Team / Task Force / Resource Designator		LWD	Leader	Number Persons	Drop Off PT./Time	Pick Up PT./Time
E-2 DZR1 TIMBERLINE		08/16	JOHN RAY	2	HAYSTACK STAGING/0700	HAYSTACK STAGING/2300
E-3 DZR2 REMOTE TRANSPORT SERVICES		08/16	JEFF HARRISON	1	HAYSTACK STAGING/0700	HAYSTACK STAGING/2300
E-75 EXC2 TIMBERLINE - 69891		08/24	LANCE CARLSON	2	HAYSTACK STAGING/0700	HAYSTACK STAGING/2300
E-96 EXC3 THREE WAYNES WORLD		08/27	WAYNE GRAY	1	HAYSTACK STAGING/0700	HAYSTACK STAGING/2300
E-46 SMM2 THREE SEASONS		08/22	GIL DORMAN	2	HAYSTACK STAGING/0700	HAYSTACK STAGING/2300
E-22 WTS2 C4 ENTERPRISES		08/20	GARY CONTENTO	1	HAYSTACK STAGING/0700	HAYSTACK STAGING/2300
<b>6. Control Operations/Work Assignments:</b>						
<b>7. Special Instructions:</b>						
<b>8. Division/Group Communication Summary</b>						
Function	Channel	RX Frequency N/W	RX Tone/NAC	TX Frequency N/W	TX Tone/NAC	Mode
COMMAND						
TACTICAL						
LOGISTICS						
AIR TO GROUND						
<b>9. Prepared By (Resource Unit Leader)</b>			<b>Approved By (Planning Section Chief)</b>		<b>Date</b>	<b>Time</b>
MATTHEW REECE, RESL			DARREN FINLEY		08/15/2023	2000

**AIR OPERATIONS SUMMARY**

Prepared By: Mike Maguire

Prepared Date: 08/15/2023

Prepared Time: 1800

1. INCIDENT NAME: <b>Lost Horse Creek</b>		2. OPS PERIOD DATE: <b>8/16/23</b>	START TIME: <b>0900</b>	END TIME: <b>2300</b>	SUNSET <b>2212</b>	SUNRISE <b>0539</b>
---	--	------------------------------------	-------------------------	-----------------------	--------------------	---------------------

**3. REMARKS and RISK MITIGATIONS:**  
 All missions will be analyzed in terms of hazards and risks. Insure to brief for all IA missions to include new frequencies, ground contacts and other aircraft. Any item on the 220 that is in *italics* denotes changes from previous day.

4. READY ALERT AIRCRAFT:

5. TFR #: **3/4417**  
**Surface/4000' MSL**  
**Freq: 120.850**  
**0900-2300 daily**

6. PERSONNEL		NAME	PHONE #	7. FREQUENCIES		8. FIXED-WING	
AOBD	Mike Maguire	LWD 8/20	828-775-1871	A/A	120.350	Air Attack : Order through Haystack HB	
ASGS (t)	Dan Fairchild	LWD 8/28	605-481-8902	A/A (TFR)	120.850		
HEBM Haystack ABRO	Kay Kudo	LWD 8/27	530-513-2778	A/G Fixed Wing	163.1500	Lead Planes/Airtankers/Helicopters - Order through Haystack HB or Air Attack if up	
DECK	On Order			A/G Rotary Wing	169.8125		
	On Order			A/G Initial Attack	166.6375		
HEBM (@LADD)	Tom Schmidt		907-750-1795	A/G Medical (VMED28)	155.3400	FT Wainwright Helibase BLM/AFS (LADD) N64 50.390 W147 35.270	
					Tone156.7 Tx		
					Tone156.7 Rx	Haystack Helibase Phone 208-891-6774	
				DECK (No Tone)	163.100	N65 04.961 W147 42.562W <b>corrected</b>	
				NFDC Flight Following	132.450	Fuel Tender staged at Haystack Helibase	
Northern Forestry Dispatch Center	Ask for AIRCRAFT		907-451-3087			UAS: T3 UR31 Justin Johansen 206-786-9272	
UAO State	Greg Scully		907-240-4660			COSTS: <a href="mailto:2023.losthorsecreek.finance@firenet.gov">2023.losthorsecreek.finance@firenet.gov</a>	
UAO BLM	Jason Brooks		907-482-0738				
UYT Dispatch (BLM)			907-356-5555				
Haystack Helibase	<b>208-891-6774</b>					Incident Job Codes: Lost Horse Creek AK-FAS-311296 PNQG23(1522)	


**9. HELICOPTERS**

FAA N#	T Y	MAKE/ MODEL	BASE	AVAIL	START	REMARKS	FAA N#	T Y	MAKE/ MODEL	BASE	AVAIL	START	REMARKS
7LH	3	B-407	LADD	0930	0900	CWN - Mgr Darin Troy 208-709-2421 LWD 8/16							
9AE	3	AS350B3	LADD	0930	0900	Mgr: Jordan McCabe 520-904-5670 ExUse LWD 8/25							
5AE	3	AS350B3	LADD	0930	0900	On Loan from AFS Day to Day							
3KA	2	B-212	LADD	0930	0900								

INCIDENT RADIO COMMUNICATIONS PLAN I-205		1. INCIDENT NAME		2. DATE/TIME PREPARED		3. OPERATIONAL PERIOD DATE/TIME					
		<b>LOST HORSE CREEK</b>		8-15-2023 1800		8-16-2023 0700 - 2200					
4. BASIC RADIO CHANNEL UTILIZATION											
Ch #	Function	Channel Name	Assignment	RX Freq	NW	RX Tone/NAC	TX Freq	NW	TX Tone/NAC	Mode Analog (A) Digital (D) Mixed (M)	Remarks
1	Tactical	TAC 1	DIV W	168.0500	N	123.0	168.0500	N	123.0	A	DIV WHISKEY
2	Tactical	TAC 2	DIV J	168.2000	N	123.0	168.2000	N	123.0	A	DIV JULIET
3	Tactical	TAC 3	DIV ELLIOTT	168.6000	N	123.0	168.6000	N	123.0	A	DIV ELLIOTT W. GRP
4	Tactical	TAC 4	NOT ASSIGNED	166.7250	N	123.0	166.7250	N	123.0	A	UNASSIGNED
5	Tactical	TAC 5	DIV P	166.7750	N	123.0	166.7750	N	123.0	A	DIV PAPA
6	Tactical	TAC 6	NOT ASSIGNED	168.2500	N	123.0	168.2500	N	123.0	A	UNASSIGNED
7	COMMAND	CMD 7	COMMAND	170.4500	N	123.0	168.1000	N	123.0	A	HAYSTACK MT
8	COMMAND	CMD 8	COMMAND	169.5375	N	123.0	164.7125	N	123.0	A	ESTER DOME MT
9	COMMAND	CMD 9	COMMAND	173.0375	N	123.0	167.3250	N	123.0	A	LEE'S CABIN
10	UNASSIGNED	UNASSIGNED	NOT ASSIGNED	0.0000	N	0.0	0.0000	N	0.0	A	UNASSIGNED
11	IA GROUP	LOCAL IA	LOCAL IA	159.3750	N	0.0	159.3750	N	0.0	A	LOCAL IA
12	IA/G 1	LOCAL A/G	A/G	166.6375	N	0.0	166.6375	N	0.0	A	LOCAL A/G
13	PRI A/G	PRI A/G	Primary	163.1500	N	0.0	163.1500	N	0.0	A	PRIMARY A/G
14	SEC A/G	SEC A/G	Secondary	169.8125	N	0.0	169.8125	N	0.0	A	SECONDARY A/G
15	MEDICAL A/G	VMED 28	Medical Evac	155.3400	N	156.7	155.3400	N	156.7	A	Used to contact Med-Evac only
16	AIR GUARD	AIR GUARD	AIR GUARD	168.6250	N	0.0	168.6250	N	110.9	A	Used for Emergency Only
<b>5. Special Instructions: ** COMMUNICATIONS 206-348-9989 **</b>								<b>** 24 hour RADO **</b>			
<b>6. I-205 Prepared By: Communications Unit Leader</b>			<b>Name: Mike Norman</b>			<b>Signature: </b>					

## LOST HORSE CREEK 08/16

COMMAND		
ICCI	Peter Butteri	907-350-4782
DPIC	Chuck Russell	907-205-7570
SOF2	Tom Hudson	907-538-9306
SOF2	Tom Greiling	907-414-0994
SOF2	Jeff Hammes	208-313-7770
LOFR	Michelle Weston	907-280-9663
LOFR (t)	Adam Kohley	303-981-7173
LOFR (t)	Erica Lamb	907-251-5586
PIOC	Emery Johnson	907-888-9617
PIOC	Brandalyn Vonk	435-650-2694
FINANCE		
FSC2	Barb Haxby	360-601-8820
FSC1	Rosalind Sorell	405-238-0750
FSCC (t)	Krisanda Kappus	307-331-0910
COST	Jim Eleazer	907-205-8687
TIME	Annette Hoyer	505-385-8093
COMP (t)	Rebecca Howard	907-398-4494
PLANS		
PSC2	Darren Finley	907-350-7091
PSCC (t)	Jennifer Barnes	907-244-9073
SITL	Scott Bliss	928-308-7873
GISS	Andy Kirsch	907-347-7875
GISS (t)	Jessica Haddon	509-859-4470
GISS (t)	Zach Dufault	701-290-5542
ITSS	Calvin Moses	907-328-8608
ITSS	Hannah Semock	907-978-4437
RESL	Matthew Reece	907-518-1775
RESL (t)	Susanna Nancarrow	907-227-1093
DOCL	Nancy Salminen	218-209-7808
DMOB - Virtual	Fred Noack	360-801-8471
IMET	Aviva Braun	208-473-9256
FBAN	John Stutchell	509-993-8304
LOGISTICS		
LSCC	Matt Robinett	907-799-4594
LSCC	Terri Berrie	907-322-6013
ORDM	Julia Everta	707-683-6782
ORDM (t)	Morgan Kothe	907-750-6931
FDUL	Darren Ballentine	530-282-9079
FACL	Joshua Smail	907-382-4504
GSUL	Bob Emrick	303-786-7575
SPUL	Duane Bennett	520-559-2766

COMMUNICATIONS AND INFORMATION		
<b>Communications</b>		<b>206-348-9989</b>
Fire Information		
VIRTUAL CHECK-IN, FINANCE AND DEMOB		
Check-In:	Check-In QR Code:	
Check-In: 2023.losthorsecreek.checkin@firenet.gov		
Finance: 505-385-8093		
Finance: 2023.losthorsecreek.finance@firenet.gov		
Demob: 360-801-8471		
Demob: 2023.losthorsecreek.demob@firenet.gov		
OPERATIONS		
Field Ops	Trent Girard	423-715-1099
Field Ops	Kyle Cowan	907-370-3362
Planning Ops	Karen Scholl	909-553-7731
Planning Ops (t)	Brian Tai	510-590-1620
Haystack Staging		
STAM	Bill Tripp	870-253-4101
DIV J		
DIVS	Miles Bond	505-603-6550
DIVS(t)	Omar Flores	509-929-0193
DIV P		
DIVS	Chris Harper	541-340-4541
DIVS (t)	Bryce Henderson	907-482-0837
DIV W		
DIVS	Jamie Mayor	480-452-4547
DIVS (t)	Bevin Protas	970-316-1296
AIR OPS		
AOBD	Mike Maguire	828-775-1871
ASGS (t)	Kay Kudo	530-513-2778
ASGS (t)	Dan Fairchild	605-481-8902
Medical		
MEDL	Meredith Lund	603-493-9965
MEDL	Greg Chavez	907-378-4618
MEDL (t)	Cat Stevens	605-215-9330
Communications		
COML	Mike Norman	928-245-2584

## SAFETY MESSAGE

### **Lost Horse Creek Fire 08/15/2023**

#### UTV DRIVING WATCH-OUTS

- Perform pre-trip maintenance checks including clean windows, proper tire pressure and tread wear, and top off any fluids, headlights, turn signals, brakes and brake lights. Qualified operators only!
- Remember UTV's are a tool to support our suppression efforts. They are a **Tool**, **not a Toy**. Just because the vehicle can handle the rough road conditions doesn't mean excessive speed or horseplay is permitted.
- Be aware of the limitations of your UTV. They are a machine, not a goat, and are not meant to get you everywhere.
- Utilize all required personal Safety equipment.
- Secure all loads. (Packs, tools, supplies)
- Remember if there is damage to it before you receive it to report it
- Be accountable to where you're operating **check in/check out** with known and planned travel routes.
- **IMPORTANT: PLEASE, HAVE A CREW SAFETY BRIEFING WITHIN YOUR MODULE.**

**Your Lost Horse Creek Fire Safety Team**



# Logistics info page

## **Line Orders:**

“Fill out a General message or Line Order form”

Include point of contact: name, phone number,  
date/time needed and pickup location.

(Haystack staging supply, Middle fork staging)

Text a picture of this form to the SPUL

Duane Bennett

520-559-2766

Thank you!

LOGS

# FINANCE

Submit all time to Finance daily to  
[2023.losthorsecreek.finance@firenet.gov](mailto:2023.losthorsecreek.finance@firenet.gov)

**Please include TIME, PROC, COST or COMP in your subject of Email:**

- TIME – O# and C# (non-contract).
- PROC – E# and C# (Contract).
- COST – Cost summaries.
- COMP – For any claims related items.



## **Important things to remember:**



If it is your day to Demob, please ensure you are initiating the Demob process in the IAP before coming to see Finance to get your timesheet finalized.

**If something you are using becomes damaged or it quits working, please follow the below steps. This is especially important for the unoperated equipment such as ATVs/UTVs.**

If it isn't yours: Fill out a statement of what caused the damage or happened causing it to need repaired. (Can be a General Message).

Take pictures of the damage..... We will need them. Notify the appropriate person who will need to know that it's not operational anymore (ex: supervisor, ground support, etc.).

If it is yours: Call the Claims phone number to get more details.

### **Contact Information**

TIME/Equipment: 206-348-9132

Injuries/Claims: 971-245-0255

## **Guidelines for using the virtual check-in process.**

1. Check-in using QR code or go the following website: <https://bit.ly/2Rr545v>

2. Email documents to: [2023.losthorsecreek.checkin@firenet.gov](mailto:2023.losthorsecreek.checkin@firenet.gov)

**Subject:** RO#, Name of document(s)



OVERHEAD	CREWS	EQUIPMENT
•RESOURCE ORDER	•RESOURCE ORDER	•RESOURCE ORDER
•CASUAL HIRE FORM (AD/EFF)	•CREW MANIFEST	•CREW MANIFEST
	•VEHICLE INFO	•CONTRACTOR AGREEMENT (P. 1-5)
		•COOPERATOR AGREEMENT

3. If **unable to email**, contact finance at 505-385-8093.

4. Check-in with your **incident supervisor** (operations resources contact the Operations Section Chief).

5. **Contracted resources** go to ground support for inspection.

## **Guidelines for submitting Extension Requests to DEMOB**

1. Extension Requests are to be initiated by the Incident Supervisor, not the Resource.

2. Remember that with VIPR contracted equipment the operator is authorized to sign on behalf of the owner, and so should sign both Lines 2 and 4.

3. Always make sure the resource signs on line 2.

4. Demob can and will secure the IC signature on Line 1 after other signatures have been secured.

5. Illegible forms, particularly the home unit email address, will be returned.

6. The Home Unit needs to have been forewarned by the Resource. Don't expect quick turn arounds from any Home Unit, particularly on weekends.

7. Requests without Home Unit signatures but with a legible email address will be forwarded to the Home Unit by Demob provided demob receives it at least 48 hours before the resources last shift. Others will be returned.

8. Time frame:

➤ For resources driving: If the request is not completed by 24 hours prior to departure time the resource will be demobed.

➤ For resources flying: If the request is not completed by 72 hours prior to departure time the resource will be demobed.

9. There are only two options: Work 21 days and go home, or take 2 days off and work 14 more for a total of 30 days and go home.

10. Extension Requests for Operational resources will be reviewed by Planning Ops before being implemented.

11. The Extension form is accessed via the QR code on the IAP cover. The January 2021 version is the official version that will be accepted.

12. Email completed forms to [2023.losthorsecreek.demob@firenet.gov](mailto:2023.losthorsecreek.demob@firenet.gov)

# **Lost Horse Creek Demob Instructions**

## **As your Demob day approaches:**

- Pay attention to the IAP Demob Schedule.
- Alert DMOB if there are issues. We can only fix things we know about.
- **PHONE:** 360-801-8471; **Email:** [2023.losthorsecreek.demob@firenet.gov](mailto:2023.losthorsecreek.demob@firenet.gov)
- **NO CELL COVERAGE:** See your Division Supervisor
- **Contact FINANCE 48 hours prior** to give them a heads-up you are departing. **206-348-9132**
- **Email:** [2023.losthorsecreek.finance@firenet.gov](mailto:2023.losthorsecreek.finance@firenet.gov) Turn in any outstanding or travel CTRs/Shift Tickets. Make sure they're SIGNED.
- **Confirm no missing financial documentation. See Finance Page for full information.**

---

## **On your Day of Demob - Virtual Demob Process**

### **STEP 1:**

**Contact DMOB: 360-801-8471** to activate your virtual Check-Out Sheet.

The DMOB can answer your questions about the process and pass on any updates.

**You will not be able to proceed if you have not talked to the DMOB.**

### **STEP 2:**

**Contact the Supply, Communications and Ground Support** representatives.

Tell them (whether in person or on the phone) that you are Demobing and need to be signed off.

If using a phone to contact a Unit - TEXTING is preferred over Voice Calling. Allow 1 hour for response.

**SUPPLY** – see in-person to return issued gear and left over supplies.

If you have nothing to turn in – TEXT ONLY your full Name & RO# to – **520-559-2766 (Supply)**.

**COMMUNICATIONS** – see in-person to return in any commo gear (Radios, etc.)

If you have nothing to turn in – call or text your full Name & RO# to – **206-348-9989 (Communications)**.

**GROUND SUPPORT** – see in-person to return pool NERV Rentals, get an inspection, etc.

No need to go to GS – call or text your full Name & RO# to – **303-786-7575 (Ground Support)**.

Other Considerations:

If you are a Trainer or a Trainee, make sure you have closed out with the Training Specialist.

Turn in any Unit Logs and Evaluations to Plans.

### **STEP 3:**

**Contact FINANCE** to finalize your paperwork. Phone: **206-348-9132**

Ensure you receive your signed OF-288 or OF-286 BEFORE starting travel.

### **STEP 4:**

**Contact DMOB at 360-801-8471** DMOB will verify check-out completion.

Be prepared to talk about your departure date and time, your anticipated arrival date and time,

And where you will be staying if travel includes overnight stops away from fire camp.

**You must complete all four steps to be released in IROC.**

DEMOB HOURS OF OPERATION: 0700-1300 / 1400-2100

**Use the QR code on the front cover of the IAP to get the latest edition of these instructions.**

Ver 8/13

**IAP TENTATIVE DEMOB SCHEDULE LOST HORSE CREEK  
TENTATIVE - SUBJECT TO CHANGE - DEMOB 360-801-8471**

REQ#	KIND	NAME	TVL METH	TENT DATE	TENT TIME
E-2	DZR1	TIMBERLINE	POV	AUG 15	12:00
O-89	THSP	KANE, KELLY M	AR	AUG 15	07:00
C-6	CRW2	NULATO HILLS 1	REN	AUG 16	10:00
E-3	DZR2	DZR2 - REMOTE TRANSPORT SERVICES	POV	AUG 16	07:00
C-11	CRW2	CATG	AR	AUG 17	07:45
E-1	DZR1	TIMBERLINE	POV	AUG 17	07:00
E-4	DZR2	TIMBERLINE	POV	AUG 17	07:15
O-2.7	OSCC	SCHOLL, KAREN IRENE	REN	AUG 17	07:00
O-2.9	OSC2	GIRARD, TRENTON	AR	AUG 17	07:00
O-2.20	RESL	REECE, MATTHEW ALLAN	AR	AUG 17	07:15
O-2.64	LOFR	KOHLEY, ADAM	POV	AUG 17	07:30
O-36	EMPF	BUBEN, HEATHER DAWN	AR	AUG 17	07:30
O-76	HMGB	FRAZIER, THOMAS J	AOV	AUG 17	07:00
O-91	DIVS	SPRENGER, HEIDI	PAS	AUG 17	07:45
E-20	SUVL	SUVL - GIRDWOOD FD CHIEF 41	AOV	AUG 18	00:00
O-2.3	LOFR	WESTON, MICHELLE ROBERTA JESSICA	AOV	AUG 18	07:00
O-2.11	DIVS	BOND, MILES	REN	AUG 18	08:30
O-2.15	PSC2	FINLEY, DARREN	POV	AUG 18	07:30
O-2.21	LSCC	ROBINETT, MATTHEW EDWARD	PAS	AUG 18	07:45
O-2.32	BCMG	INFANTE, CHRISTOPHER A	POV	AUG 18	07:45
O-2.34	RCDM	GRACIK, KAYRA M	POV	AUG 18	07:45
O-2.47	PIOC	CHAMBERS, NINA MELISS	POV	AUG 18	08:30
O-2.48	GISS	DUFAULT, ZACHARY D	AIR	AUG 18	08:00
O-2.49	MEDL	STEVENS, CATLIN A	POV	AUG 18	08:00
O-2.50	ORDM	KOTHE, MORGAN A	POV	AUG 18	08:00
O-2.54	FSC1	SORRELL, ROSALIND G	AIR	AUG 18	00:00
O-2.57	RCDM	POHLMAN, CHARLES	POV	AUG 18	08:15
O-2.58	RADO	BARRY-GARLAND, ELI	REN	AUG 18	08:15
O-4	TFLD	LEHMAN, MICHAEL A	AR	AUG 18	07:00
O-5	TFLD	SASS, MARC	AR	AUG 18	07:00
O-8	TFLD	KUJALA, JAMES L	AR	AUG 18	07:00
O-9	TFLD	BERKLUND, BRYCE G	AR	AUG 18	07:15
O-48	TFLD	DERNOVSEK, KIRBY J	AIR	AUG 18	08:45
O-107	TFLD	HAISTEN, MICHAEL C	AR	AUG 18	08:45
C-12	CRW2	BIG RIVER	AR	AUG 19	07:00
E-18	ENG4	ENG4 - DOF AK42	AOV	AUG 19	07:15
E-48	ENG6	ENG6 - DOF AK62	AOV	AUG 19	07:15
O-2.4	SOFC	GREILING, THOMAS E	AOV	AUG 19	07:00
O-2.19	ITSS	MOSES, CALVIN	POV	AUG 19	10:00

**IAP TENTATIVE DEMOB SCHEDULE LOST HORSE CREEK  
TENTATIVE - SUBJECT TO CHANGE - DEMOB 360-801-8471**

REQ#	KIND	NAME	TVL METH	TENT DATE	TENT TIME
O-2.27	FDUL	BALLENTINE, DARREN EDWARD	AIR	AUG 19	07:30
O-2.35	MEDL	CHAVEZ, GREGORY B	AR	AUG 19	07:30
O-2.41	GISS	HADDON, JESSICA	AR	AUG 19	07:00
O-2.44	OSCC	TAI, BRIAN	AR	AUG 19	07:45
O-2.45	DIVS	FLORES, OMAR	AIR	AUG 19	07:45
O-2.60	SOFC	HUDSON, THOMAS	AIR	AUG 19	07:45
O-2.65	TFLD	MITCHELL, KEITH	AOV	AUG 19	08:00
O-2.66	TFLD	HAJNY, KRISTY MARIE	POV	AUG 19	08:00
O-29	IMET	BRAUN, AVIVA JUDITH	AR	AUG 19	07:30
O-40	PTRC	FARLEY, JUDY M	AIR	AUG 19	08:15
O-95	TFLD	LINEBARGER, MITCHELL	AOV	AUG 19	08:15

**Need COMMERCIAL AIR TRAVEL to get home?**

Northern Forestry Dispatch Center is responsible for arranging commercial air travel. To schedule a flight home **you** need to complete the Commercial Air Travel Request form **72-hours ahead** of your last work day. The data is needed to purchase your flight and email you the itinerary prior to your demob date.

**Link to Form:** <https://tinyurl.com/mpr6pb7s>

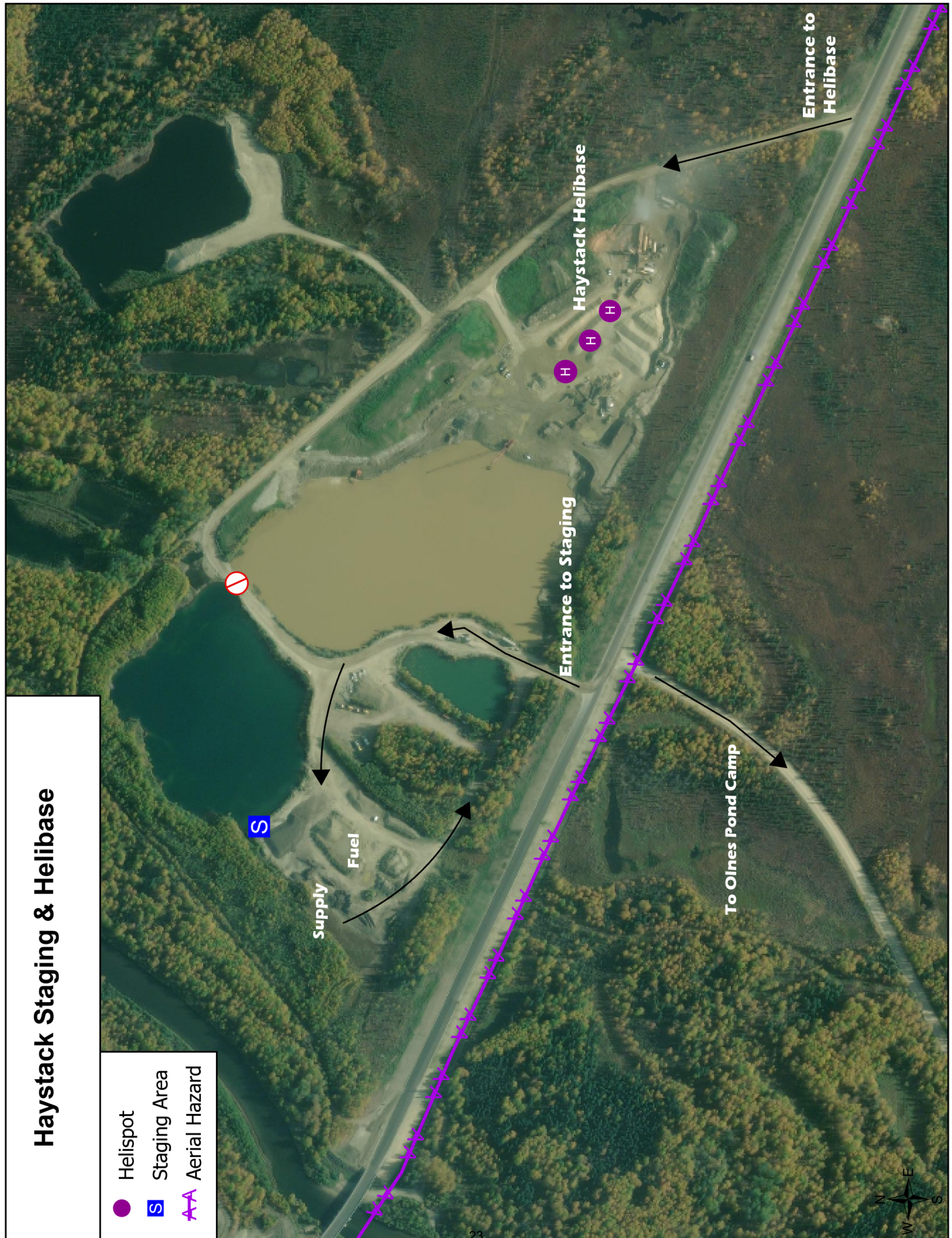


**QR code for Form**

Northern Forestry Dispatch Center will email the itinerary to the email address you enter into the form. Make sure it is an address you can access on this assignment.

# Haystack Staging & Helibase

- Helispot
- S Staging Area
- AA Aerial Hazard







## ACTIVITY LOG (ICS 214)

<b>1. Incident Name:</b> _____	<b>2. Operational Period:</b> Date From: _____ Date To: _____ Time From: _____ Time To: _____
--------------------------------	--

7. Activity Log (continuation):	
Date/Time	Notable Activities


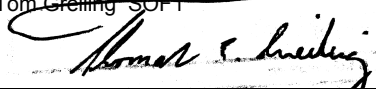
<b>8. Prepared by:</b> Name: _____	Position/Title: _____	Signature: _____
<b>ICS 214, Page 2</b>	Date/Time: _____	

# MEDICAL PLAN (ICS 206 WF)

Incident/Project Name		1. Operational Period							
<b>Lost Horse Creek</b>		Date/Time <b>8/16/2023 0700-2300</b>							
2. Medical Aid Stations									
Name	Complete Address	Phone & EMS Frequency	Advanced Life Support (ALS)						
			Yes	No					
ICP	3605 Cartwright, Ct Fairbanks, AK	Medical Phone 206-375-4293	X						
Haystack Staging	Haystack Staging	MEDL (t) Lukowicz EMTP	X						
3. Ambulance Services									
Name	Phone	Type of Aircraft & Capability							
Steese Volunteer Fire Department	911	ALS and BLS ground transport							
Guardian Flight, Fairbanks, AK	888.997.3822	King Air Fixed Wing and Lear Jets							
Life Med, Fairbanks, AK	800.478.5433	King Air Fixed Wing and Lear Jets							
4. Hospitals									
Name Complete Address	GPS Datum – WGS 84 DD° MM.MMM' N - Lat DD° MM.MMM' W - Long		Approximate Travel Time		Phone	Helipad Yes No		Isolation Unit/ Procedures	Level of Care
	Lat:	Long:	Air	Ground		Yes	No		
Fairbanks Memorial Hosp 1650 Cowles St Fairbanks, AK	64 49.90	147 44.50	30 mins	40-50 mins	EMS line 907.458.3005 or 907.458.5556 (aircraft use freq 132.45)	<input checked="" type="checkbox"/>	<input type="checkbox"/>	Yes	Level 4 Trauma
Harbor View Medical 9th Ave Seattle, WA	47 36.90	122 19.500	6 hrs	N/A	206-284-2876 (Burn center)	<input checked="" type="checkbox"/>	<input type="checkbox"/>	Yes	Level 1 Trauma/ Burn Center
Chief Andrew Isaac 1717 W Cowles St Fairbanks, AK	N/A	N/A	N/A	40-50 mins	907-451-6682	<input type="checkbox"/>	<input checked="" type="checkbox"/>	Yes	Clinic
5. Division   Branch   Group		Area Location Capability							
<b>Division J</b>		<b>EMS Responders &amp; Capability:</b>		Karin Butterfield AMTF, Winter West AEMF, Delta Amb					
		<b>Equipment Available on Scene:</b>		ALS equipment, trauma kit, oxygen, AED, SKED					
		<b>Medical Emergency Channel:</b>		Command					
		<b>ETA for Ambulance to Scene</b>							
		<b>Air:</b>		30 minutes					
		<b>Ground:</b>		40 minutes					
		<b>Approved helispot:</b>		H12	H14	H18	H20		
		65°08.750'N 147°41.287'W	65°08.648'N 147°41.870'W	65°08.683'N 147°43.099'W	65°08.421'N 147°46.052'W				
<b>Division P</b>		<b>EMS Responders &amp; Capability:</b>		Nick Tallman AEMF,					
		<b>Equipment Available on Scene:</b>		BLS equipment, trauma kit, oxygen. AED					
		<b>Medical Emergency Channel:</b>		Command					
		<b>ETA for Ambulance to Scene</b>							
		<b>Air:</b>		30 minutes					
		<b>Ground:</b>		40 minutes					
		<b>Approved helispot:</b>		H20	H24				
		65°08.421'N 147°46.052'W	65°08.363'N 147°48.705'W						
<b>Division W</b>		<b>EMS Responders &amp; Capability:</b>		Heather Buben EMPF, Dwayne Eager AEM, Cristoph Reier AEMF					
		<b>Equipment Available on Scene:</b>		ALS equipment, trauma kit, oxygen, AED, SKED, Vacuum Mattress					
		<b>Medical Emergency Channel:</b>		Command					
		<b>ETA for Ambulance to Scene</b>							
		<b>Air:</b>		30 minutes					
		<b>Ground:</b>		40 minutes					
		<b>Approved helispot:</b>		H5	H10	H45		H50	
		65°08.045'N 147°37.994'W	65°08.996'N 147°40.275'W	65°08.361'N 147°48.717'W		65°09.303'N 147°38.414'W			

## MEDICAL PLAN (ICS 206 WF)

<b>Staging</b>	<b>EMS Responders &amp; Capability:</b>	Unstaffed	
	<b>Equipment Available on Scene</b>	ALS equipment, trauma kit, oxygen, AED	
	<b>Medical Emergency Channel:</b>	Command	
	<b>ETA for Ambulance to Scene</b>		
	<b>Air:</b>	30 minutes	
	<b>Ground:</b>	40 minutes	
	<b>Approved helispot:</b>	H1 65°.04.957'N 147°42.534'W	H5 65°08.045'N 147°37.994'W

7.Prepared By (Medical Unit Leader)	8.Date/Time	9.Approved By (Safety Officer)	10.Date/Time
Meredith Lund MEDL 	8/15/2023 1800	Tom Greiling SOF1 	8/15/2023 1800

### Special Medical Emergency Procedures:

**Green-** Contact local/incident Medics for assistance. Medics will follow up with ICP MEDL by the end of shift.

**Yellow/Red-** Immediately contact local/incident medics for assistance and contact Lost Horse Creek Communications on Command using the Medical Incident Report (MIR) on the back of the IAP. Additional resources such as High Angle Rescue, if needed, will be facilitated by MEDL. A contingency plan for extraction should be in place in the event that above resources are unavailable.

**ICP/ In town travel-** Dial 911 to request medical assistance and notify MEDL as soon as possible for assistance.

**Burn patients-** Will be flown to Fairbanks Memorial for stabilization and/or flown to appropriate medical facility based on assessment.

**Dedicated Medical line: 206-375-4293**

### Medical Incident Report

**FOR A NON-EMERGENCY INCIDENT, WORK THROUGH CHAIN OF COMMAND TO REPORT AND TRANSPORT INJURED PERSONNEL AS NECESSARY.**

**FOR A MEDICAL EMERGENCY: IDENTIFY ON SCENE INCIDENT COMMANDER BY NAME AND POSITION AND ANNOUNCE "MEDICAL EMERGENCY" TO INITIATE RESPONSE FROM IMT COMMUNICATIONS/DISPATCH.**

Use the following items to communicate situation to communications/dispatch.

1. CONTACT COMMUNICATIONS / DISPATCH (**Verify correct frequency prior to starting report**)  
*Ex: "Communications, Div. Alpha. Stand-by for Emergency Traffic."*
2. INCIDENT STATUS: *Provide incident summary (including number of patients) and command structure.*  
*Ex: "Communications, I have a Red priority patient, unconscious, struck by a falling tree. Requesting air ambulance to Forest Road 1 at (Lat./Long.) This will be the Trout Meadow Medical, IC is TFLD Jones. EMT Smith is providing medical care."*

Severity of Emergency / Transport Priority	<input type="checkbox"/> RED / PRIORITY 1 Life or limb threatening injury or illness. Evacuation need is IMMEDIATE <i>Ex: Unconscious, difficulty breathing, bleeding severely, 2° – 3° burns more than 4 palm sizes, heat stroke, disoriented.</i> <input type="checkbox"/> YELLOW / PRIORITY 2 Serious Injury or illness. Evacuation may be DELAYED if necessary. <i>Ex: Significant trauma, unable to walk, 2° – 3° burns not more than 1-3 palm sizes.</i> <input type="checkbox"/> GREEN / PRIORITY 3 Minor Injury or illness. Non-Emergency transport <i>Ex: Sprains, strains, minor heat-related illness.</i>	
Nature of Injury or Illness & Mechanism of Injury		<i>Brief Summary of Injury or Illness (Ex: Unconscious, Struck by Falling Tree)</i>
Transport Request		<i>Air Ambulance / Short Haul/Hoist Ground Ambulance / Other</i>
Patient Location		<i>Descriptive Location &amp; Lat. / Long. (WGS84)</i>
Incident Name		<i>Geographic Name + "Medical" (Ex: Trout Meadow Medical)</i>
On-Scene Incident Commander		<i>Name of on-scene IC of Incident within an Incident (Ex: TFLD Jones)</i>
Patient Care		<i>Name of Care Provider (Ex: EMT Smith)</i>

3. INITIAL PATIENT ASSESSMENT: *Complete this section for each patient as applicable (start with the most severe patient)*

Patient Assessment: See IRPG page 106

Treatment:

4. TRANSPORT PLAN:

Evacuation Location (if different): *(Descriptive Location (drop point, intersection, etc.) or Lat. / Long.)* Patient's ETA to Evacuation Location:

Helispot / Extraction Site Size and Hazards:

5. ADDITIONAL RESOURCES / EQUIPMENT NEEDS:

*Example: Paramedic/EMT, Crews, Immobilization Devices, AED, Oxygen, Trauma Bag, IV/Fluid(s), Splints, Rope rescue, Wheeled litter, HAZMAT, Extrication*

6. COMMUNICATIONS: Identify State Air/Ground EMS Frequencies and Hospital Contacts as applicable

Function	Channel Name/Number	Receive (RX)	Tone/NAC *	Transmit (TX)	Tone/NAC *
COMMAND					
AIR-TO-GRND					
TACTICAL					

7. CONTINGENCY: **Considerations:** *If primary options fail, what actions can be implemented in conjunction with primary evacuation method? Be thinking ahead.*

8. ADDITIONAL INFORMATION: *Updates/Changes, etc.*

**REMEMBER:** Confirm ETA's of resources ordered. Act according to your level of training. Be Alert. Keep Calm. Think Clearly. Act Decisively.