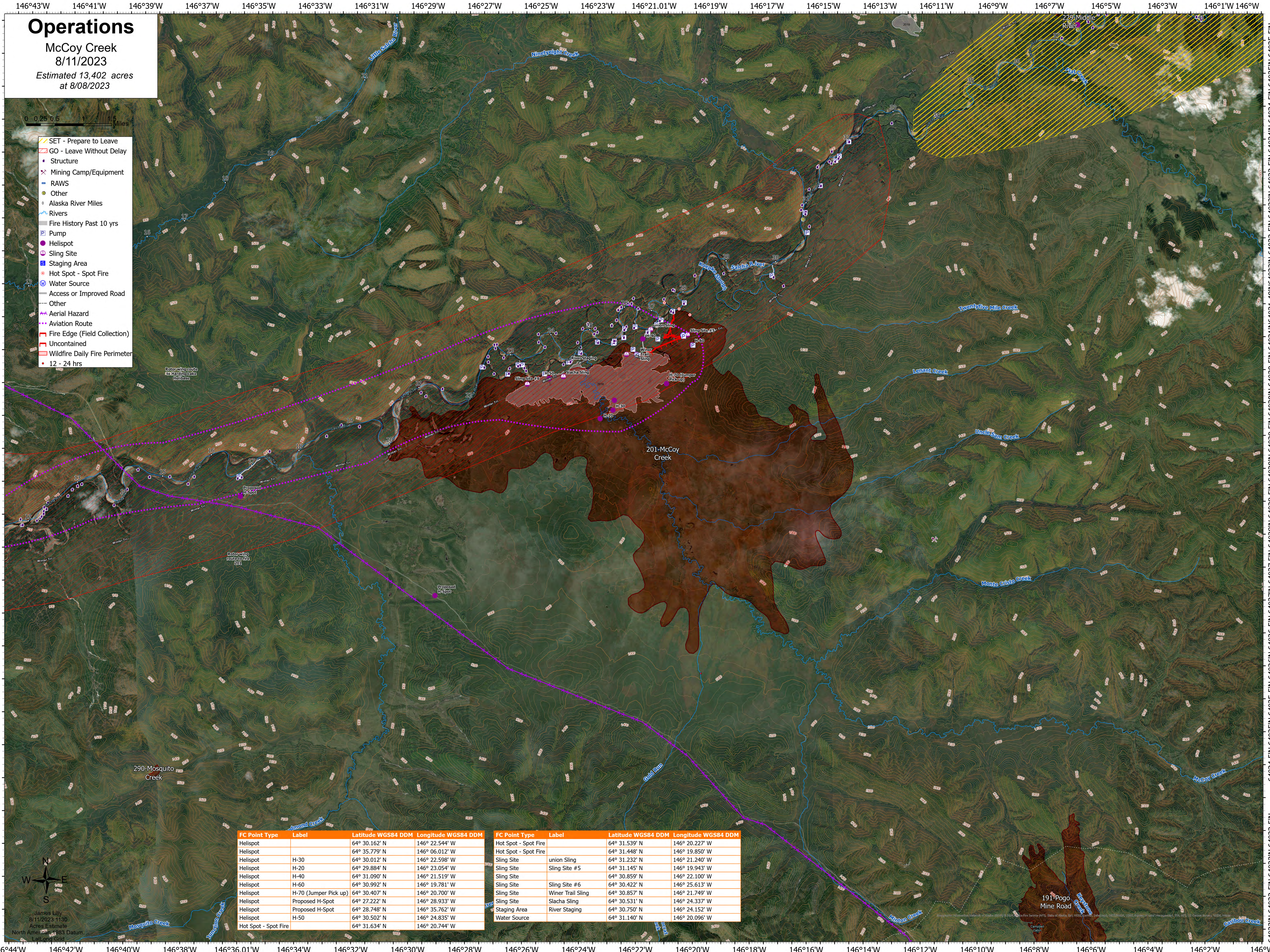


Operations

McCoy Creek
8/11/2023
Estimated 13,402 acres
at 8/08/2023

0 0.25 0.5 Miles

- ▬▬▬ SET - Prepare to Leave
- ▬▬▬ GO - Leave Without Delay
- Structure
- ✕ Mining Camp/Equipment
- ▬ RAWs
- Other
- Alaska River Miles
- ▬ Rivers
- Fire History Past 10 yrs
- P Pump
- Helispot
- S Sling Site
- S Staging Area
- Hot Spot - Spot Fire
- W Water Source
- ▬ Access or Improved Road
- ▬ Other
- ▬▬▬ Aerial Hazard
- ▬▬▬ Fire Edge (Field Collection)
- ▬▬▬ Uncontained
- ▬▬▬ Wildfire Daily Fire Perimeter
- 12 - 24 hrs



FC Point Type	Label	Latitude WGS84 DDM	Longitude WGS84 DDM
Helispot		64° 30.162' N	146° 22.544' W
Helispot		64° 35.779' N	146° 06.012' W
Helispot	H-30	64° 30.012' N	146° 22.598' W
Helispot	H-20	64° 29.884' N	146° 23.054' W
Helispot	H-40	64° 31.090' N	146° 21.519' W
Helispot	H-60	64° 30.992' N	146° 19.781' W
Helispot	H-70 (Jumper Pick up)	64° 30.407' N	146° 20.700' W
Helispot	Proposed H-Spot	64° 27.222' N	146° 28.933' W
Helispot	Proposed H-Spot	64° 28.748' N	146° 35.762' W
Helispot	H-50	64° 30.502' N	146° 24.835' W
Hot Spot - Spot Fire		64° 31.634' N	146° 20.744' W

FC Point Type	Label	Latitude WGS84 DDM	Longitude WGS84 DDM
Hot Spot - Spot Fire		64° 31.539' N	146° 20.227' W
Hot Spot - Spot Fire		64° 31.448' N	146° 19.850' W
Sling Site	Union Sling	64° 31.232' N	146° 21.240' W
Sling Site	Sling Site #5	64° 31.145' N	146° 19.943' W
Sling Site		64° 30.859' N	146° 22.100' W
Sling Site	Sling Site #6	64° 30.422' N	146° 25.613' W
Sling Site	Winer Trail Sling	64° 30.857' N	146° 21.749' W
Sling Site	Slacha Sling	64° 30.531' N	146° 24.337' W
Staging Area	River Staging	64° 30.750' N	146° 24.152' W
Water Source		64° 31.140' N	146° 20.096' W



James Lilly
8/11/2023 11:30
Acres Estimate
North American 1983 Datum
Laid and Grid

