

Operations

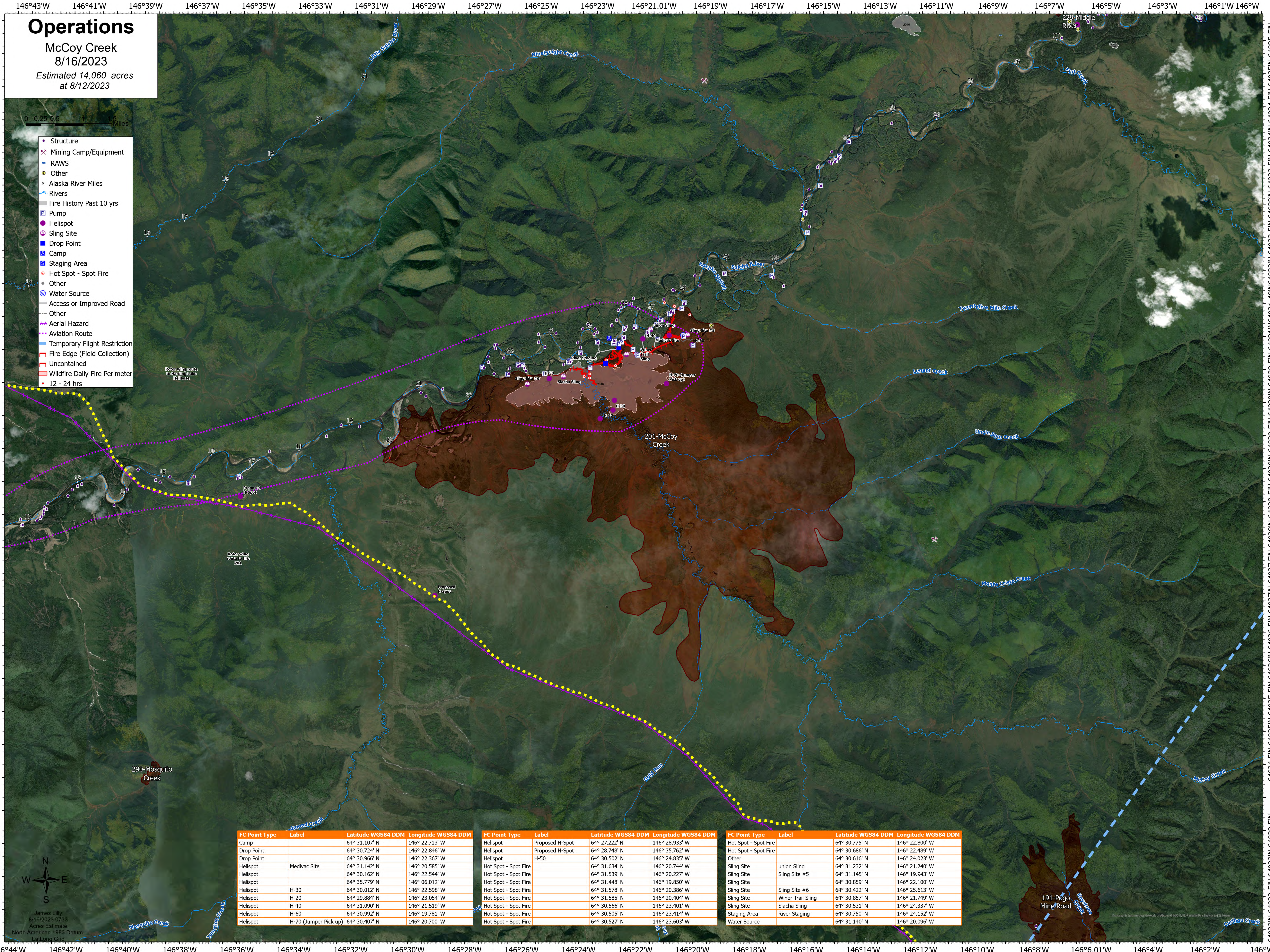
McCoy Creek

8/16/2023

Estimated 14,060 acres
at 8/12/2023

0 0.25 0.5 Miles

- Structure
- Mining Camp/Equipment
- RAWS
- Other
- Alaska River Miles
- Rivers
- Fire History Past 10 yrs
- Pump
- Helispot
- Sling Site
- Drop Point
- Camp
- Staging Area
- Hot Spot - Spot Fire
- Other
- Water Source
- Access or Improved Road
- Other
- Aerial Hazard
- Aviation Route
- Temporary Flight Restriction
- Fire Edge (Field Collection)
- Uncontained
- Wildfire Daily Fire Perimeter
- 12 - 24 hrs



FC Point Type	Label	Latitude WGS84 DDM	Longitude WGS84 DDM
Camp		64° 31.107' N	146° 22.713' W
Drop Point		64° 30.724' N	146° 22.846' W
Drop Point		64° 30.966' N	146° 22.367' W
Helispot	Medivac Site	64° 31.142' N	146° 20.585' W
Helispot		64° 30.162' N	146° 22.544' W
Helispot		64° 35.779' N	146° 06.012' W
Helispot	H-30	64° 30.012' N	146° 22.598' W
Helispot	H-20	64° 29.884' N	146° 23.054' W
Helispot	H-40	64° 31.090' N	146° 21.519' W
Helispot	H-60	64° 30.992' N	146° 19.781' W
Helispot	H-70 (Jumper Pick up)	64° 30.407' N	146° 20.700' W

FC Point Type	Label	Latitude WGS84 DDM	Longitude WGS84 DDM
Helispot	Proposed H-Spot	64° 27.222' N	146° 28.933' W
Helispot	Proposed H-Spot	64° 28.748' N	146° 35.762' W
Helispot	H-50	64° 30.502' N	146° 24.835' W
Hot Spot - Spot Fire		64° 31.634' N	146° 20.744' W
Hot Spot - Spot Fire		64° 31.539' N	146° 20.227' W
Hot Spot - Spot Fire		64° 31.448' N	146° 19.850' W
Hot Spot - Spot Fire		64° 31.578' N	146° 20.386' W
Hot Spot - Spot Fire		64° 31.585' N	146° 20.404' W
Hot Spot - Spot Fire		64° 30.566' N	146° 23.401' W
Hot Spot - Spot Fire		64° 30.505' N	146° 23.414' W
Hot Spot - Spot Fire		64° 30.527' N	146° 23.603' W

FC Point Type	Label	Latitude WGS84 DDM	Longitude WGS84 DDM
Hot Spot - Spot Fire		64° 30.775' N	146° 22.800' W
Hot Spot - Spot Fire		64° 30.686' N	146° 22.489' W
Other		64° 30.616' N	146° 24.023' W
Sling Site	union Sling	64° 31.232' N	146° 21.240' W
Sling Site	Sling Site #5	64° 31.145' N	146° 19.943' W
Sling Site		64° 30.859' N	146° 22.100' W
Sling Site	Sling Site #6	64° 30.422' N	146° 25.613' W
Sling Site	Winer Trail Sling	64° 30.857' N	146° 21.749' W
Sling Site	Slacha Sling	64° 30.531' N	146° 24.337' W
Staging Area	River Staging	64° 30.750' N	146° 24.152' W
Water Source		64° 31.140' N	146° 20.096' W

James Lilly
8/16/2023 07:33
Acres Estimate
North American 1983 Datum
Latt Long Grid

191-Pogo Mine Road