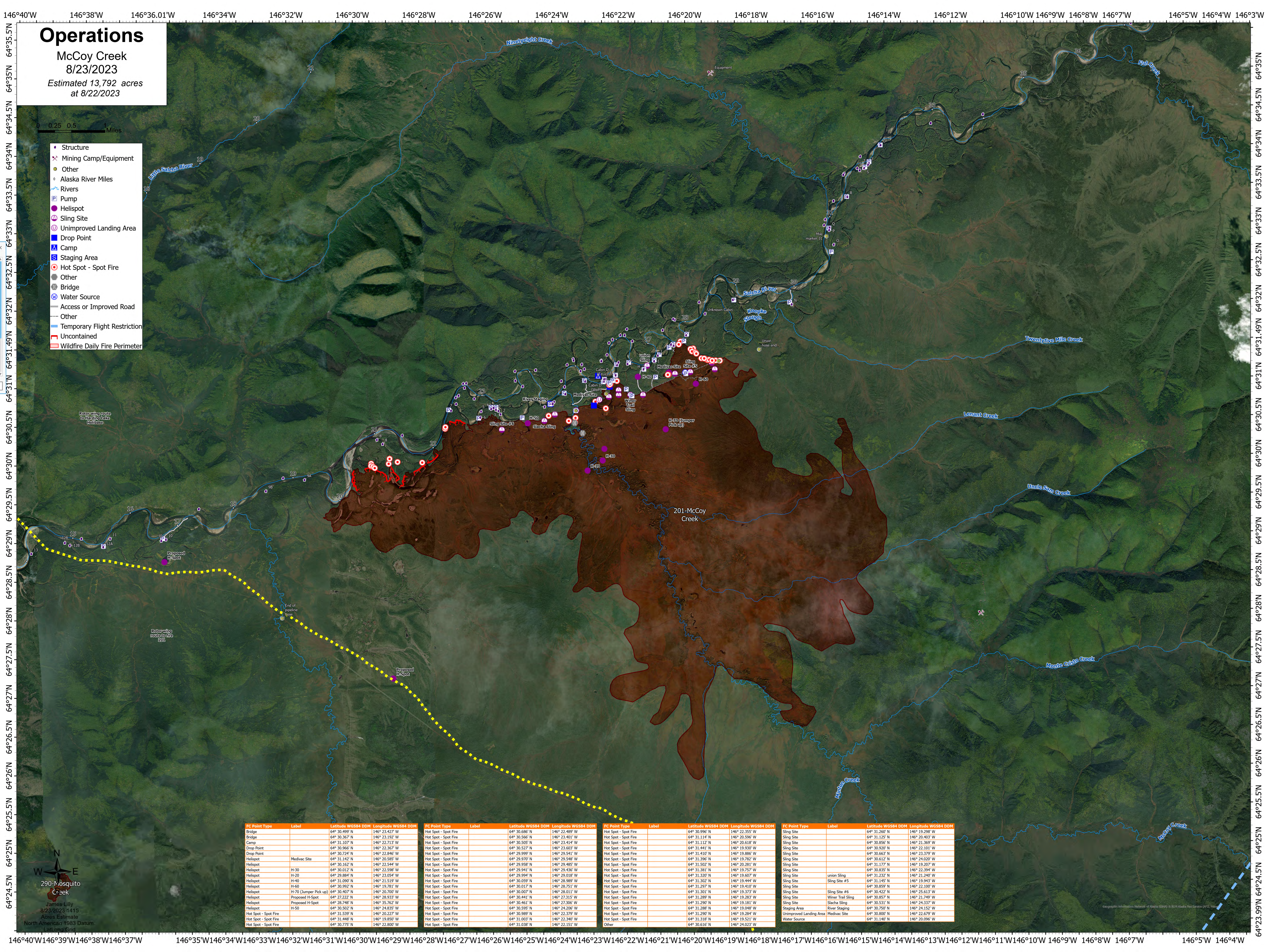


# Operations

McCoy Creek  
8/23/2023  
Estimated 13,792 acres  
at 8/22/2023

0 0.25 0.5 Miles

- Structure
- Mining Camp/Equipment
- Other
- Alaska River Miles
- Rivers
- Pump
- Helispot
- Sling Site
- Unimproved Landing Area
- Drop Point
- Camp
- Staging Area
- Hot Spot - Spot Fire
- Other
- Bridge
- Water Source
- Access or Improved Road
- Other
- Temporary Flight Restriction
- Uncontained
- Wildfire Daily Fire Perimeter



FC Point Type	Label	Latitude WGS84 DDM	Longitude WGS84 DDM	FC Point Type	Label	Latitude WGS84 DDM	Longitude WGS84 DDM	FC Point Type	Label	Latitude WGS84 DDM	Longitude WGS84 DDM	FC Point Type	Label	Latitude WGS84 DDM	Longitude WGS84 DDM
Bridge		64° 30.499' N	146° 23.427' W	Hot Spot - Spot Fire		64° 30.566' N	146° 22.405' W	Hot Spot - Spot Fire		64° 31.114' N	146° 20.566' W	Sling Site		64° 31.267' N	146° 19.296' W
Drop Point		64° 30.367' N	146° 23.192' W	Hot Spot - Spot Fire		64° 30.566' N	146° 23.401' W	Hot Spot - Spot Fire		64° 31.114' N	146° 20.566' W	Sling Site		64° 31.125' N	146° 20.403' W
Camp		64° 31.107' N	146° 22.713' W	Hot Spot - Spot Fire		64° 30.505' N	146° 23.414' W	Hot Spot - Spot Fire		64° 31.112' N	146° 20.618' W	Sling Site		64° 30.856' N	146° 21.369' W
Drop Point		64° 30.966' N	146° 22.367' W	Hot Spot - Spot Fire		64° 30.527' N	146° 23.603' W	Hot Spot - Spot Fire		64° 31.441' N	146° 19.930' W	Sling Site		64° 30.920' N	146° 22.101' W
Drop Point		64° 30.724' N	146° 22.846' W	Hot Spot - Spot Fire		64° 29.999' N	146° 29.541' W	Hot Spot - Spot Fire		64° 31.410' N	146° 19.886' W	Sling Site		64° 30.663' N	146° 23.279' W
Helispot	Medivac Site	64° 31.142' N	146° 20.585' W	Hot Spot - Spot Fire		64° 29.970' N	146° 29.548' W	Hot Spot - Spot Fire		64° 31.390' N	146° 19.782' W	Sling Site		64° 30.612' N	146° 24.200' W
Helispot		64° 30.162' N	146° 22.544' W	Hot Spot - Spot Fire		64° 29.958' N	146° 29.485' W	Hot Spot - Spot Fire		64° 31.502' N	146° 20.281' W	Sling Site		64° 31.177' N	146° 19.207' W
Helispot	H-30	64° 30.012' N	146° 22.598' W	Hot Spot - Spot Fire		64° 29.941' N	146° 29.436' W	Hot Spot - Spot Fire		64° 31.381' N	146° 19.757' W	Sling Site		64° 30.835' N	146° 22.394' W
Helispot	H-20	64° 29.884' N	146° 23.054' W	Hot Spot - Spot Fire		64° 29.934' N	146° 29.018' W	Hot Spot - Spot Fire		64° 31.320' N	146° 19.694' W	Sling Site	Union Sling	64° 31.232' N	146° 21.240' W
Helispot	H-40	64° 31.090' N	146° 21.519' W	Hot Spot - Spot Fire		64° 30.959' N	146° 28.989' W	Hot Spot - Spot Fire		64° 31.302' N	146° 19.494' W	Sling Site	Sling Site #5	64° 31.145' N	146° 19.943' W
Helispot	H-60	64° 30.952' N	146° 19.781' W	Hot Spot - Spot Fire		64° 30.017' N	146° 28.751' W	Hot Spot - Spot Fire		64° 31.297' N	146° 19.410' W	Sling Site		64° 30.859' N	146° 22.100' W
Helispot	H-70 (Dumper Pick up)	64° 30.407' N	146° 20.700' W	Hot Spot - Spot Fire		64° 30.007' N	146° 28.011' W	Hot Spot - Spot Fire		64° 31.301' N	146° 19.373' W	Sling Site	Sling Site #6	64° 30.422' N	146° 25.613' W
Helispot	Proposed H-Spot	64° 27.222' N	146° 28.933' W	Hot Spot - Spot Fire		64° 30.441' N	146° 27.315' W	Hot Spot - Spot Fire		64° 31.289' N	146° 19.283' W	Sling Site	Winer Trail Sling	64° 30.857' N	146° 21.749' W
Helispot	Proposed H-Spot	64° 26.748' N	146° 35.762' W	Hot Spot - Spot Fire		64° 30.461' N	146° 27.208' W	Hot Spot - Spot Fire		64° 31.290' N	146° 19.181' W	Sling Site	Slacha Sling	64° 30.531' N	146° 24.337' W
Helispot	H-50	64° 30.502' N	146° 24.835' W	Hot Spot - Spot Fire		64° 30.595' N	146° 24.206' W	Hot Spot - Spot Fire		64° 31.280' N	146° 19.048' W	Staging Area	River Staging	64° 30.750' N	146° 24.152' W
Hot Spot - Spot Fire		64° 31.539' N	146° 20.227' W	Hot Spot - Spot Fire		64° 30.989' N	146° 22.379' W	Hot Spot - Spot Fire		64° 31.290' N	146° 19.284' W	Unimproved Landing Area	Medivac Site	64° 30.800' N	146° 22.679' W
Hot Spot - Spot Fire		64° 31.448' N	146° 19.850' W	Hot Spot - Spot Fire		64° 31.003' N	146° 22.340' W	Hot Spot - Spot Fire		64° 31.318' N	146° 19.521' W	Water Source		64° 31.140' N	146° 20.096' W
Hot Spot - Spot Fire		64° 30.775' N	146° 22.800' W	Hot Spot - Spot Fire		64° 31.038' N	146° 22.151' W	Other		64° 30.616' N	146° 24.023' W				



290-Mosquito Creek  
James Lilly  
8/23/2023 1415  
Acre Estimate  
North American 1983 Datum  
Lambert Grid

Geographic Information System of Alaska (GIS) by Alaska Forest Service (AFS), Inc.