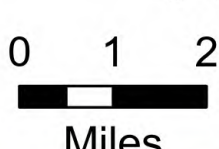


148°42'W 148°36'W 148°30'W 148°24'W 148°18'W 148°12'W 148°6'W 148°W 147°54'W 147°48'W 147°42'W 147°36'W 147°30'W

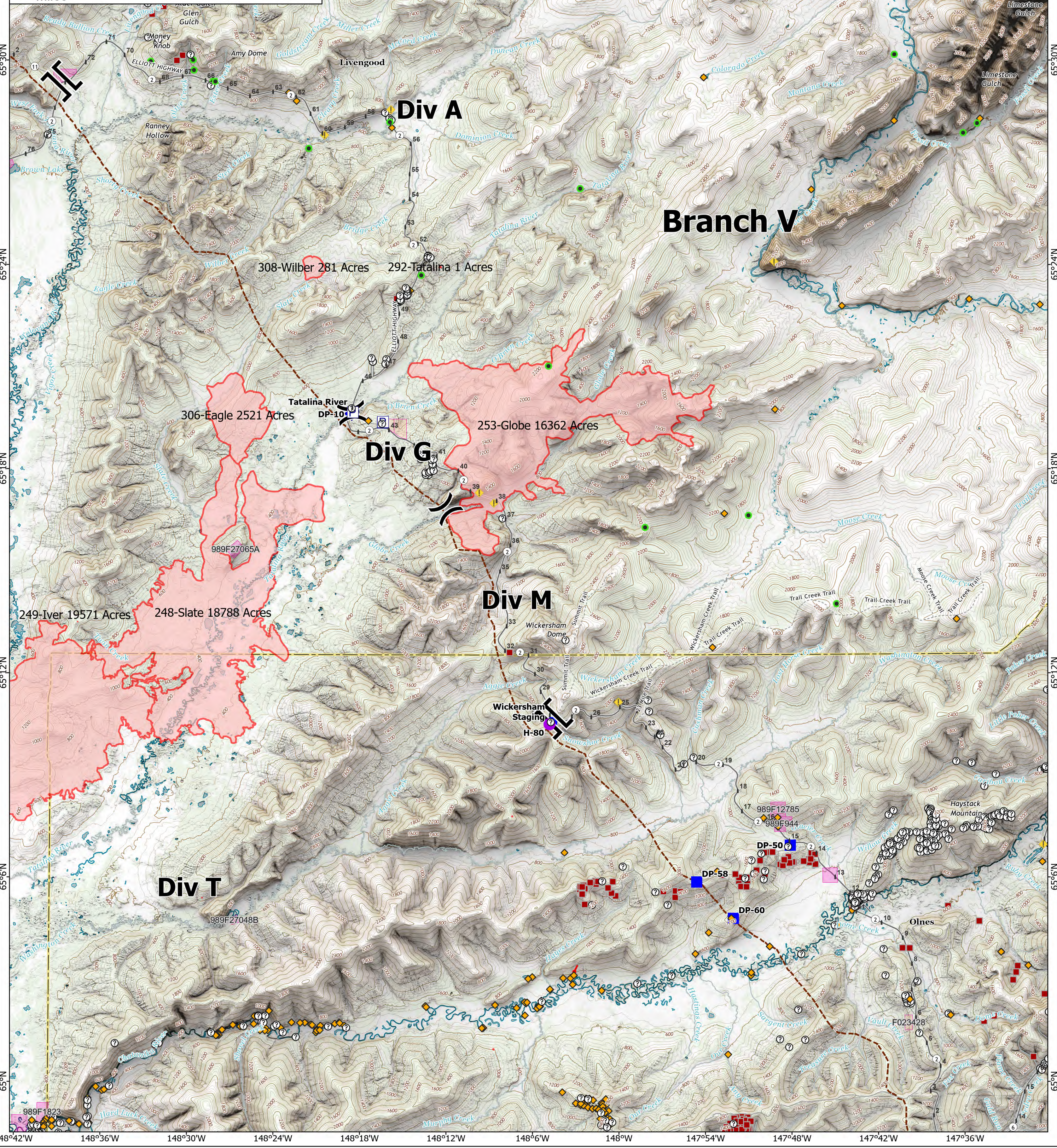
Operations Branch V

Grapefruit Complex AKUYD-000900

7/3/2024



	Helispot		Wildfire Daily Fire Perimeter
	Division Break		Critical
	Branch Break		Full
	Drop Point		No Protection
	Staging Area		Avoid
	Gate		Undesignated
	Mobile Weather Unit		Restricted
	Draft Site		Pending
	Pump		County or Equivalent
	Access Route		Trans Alaska Pipeline
	Fire Edge (Field Collection)		Milepost



148°42'W 148°36'W 148°30'W 148°24'W 148°18'W 148°12'W 148°6'W 148°W 147°54'W 147°48'W 147°42'W 147°36'W

65°36'N 65°30'N 65°24'N 65°18'N 65°12'N 65°6'N 65°N

65°36'N 65°30'N 65°24'N 65°18'N 65°12'N 65°6'N 65°N