

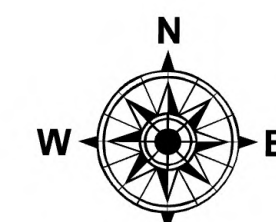
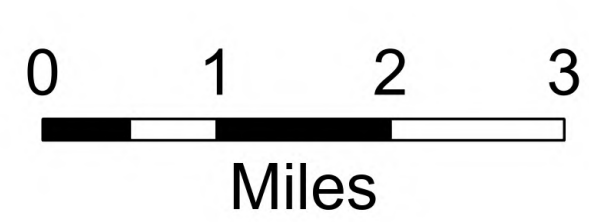
149°16'W 149°12'W 149°8'W 149°4'W 149°W 148°56'W 148°52'W 148°48'W 148°44'W 148°40'W 148°36'W 148°32'W 148°28'W 148°24'W 148°20'W 148°16'W 148°12'W 148°8'W 148°4'W 148°W 147°56'W 147°52'W 147°48'W 147°44'W 147°40'W 147°36'W

Operations

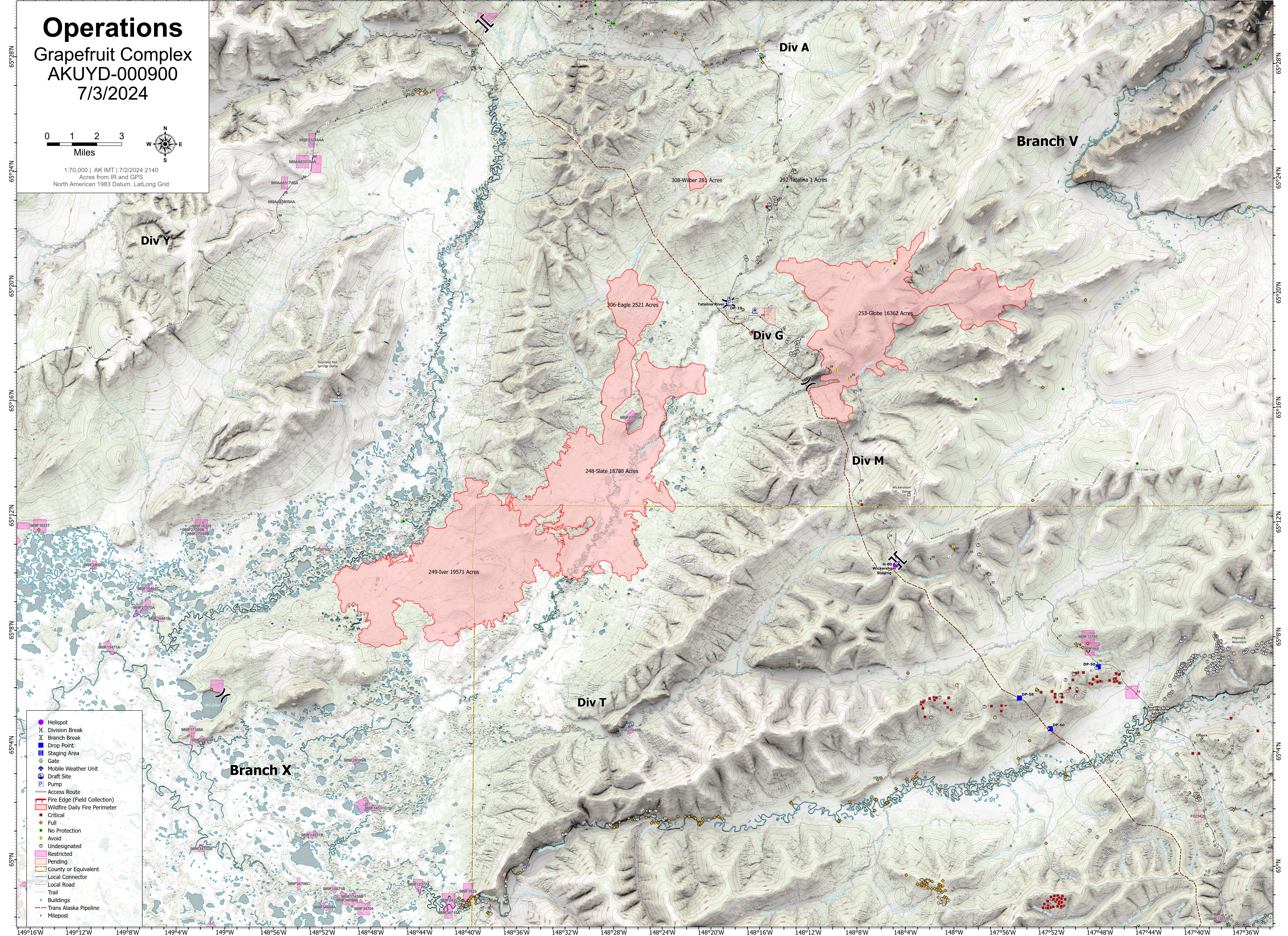
Grapefruit Complex

AKUYD-000900

7/3/2024



1:70,000 | AK IMT | 7/2/2024 2140
Acres from IR and GPS
North American 1983 Datum, Lat/Long Grid



- Helispot
- ⌵ Division Break
- ⌵ Branch Break
- Drop Point
- Staging Area
- Gate
- ⊕ Mobile Weather Unit
- ⊕ Draft Site
- ⊕ Pump
- Access Route
- Fire Edge (Field Collection)
- Wildfire Daily Fire Perimeter
- Critical
- Full
- No Protection
- Avoid
- Undesignated
- Restricted
- Pending
- County or Equivalent
- Local Connector
- Local Road
- Trail
- Buildings
- Trans Alaska Pipeline
- Milepost

149°16'W 149°12'W 149°8'W 149°4'W 149°W 148°56'W 148°52'W 148°48'W 148°44'W 148°40'W 148°36'W 148°32'W 148°28'W 148°24'W 148°20'W 148°16'W 148°12'W 148°8'W 148°4'W 148°W 147°56'W 147°52'W 147°48'W 147°44'W 147°40'W 147°36'W