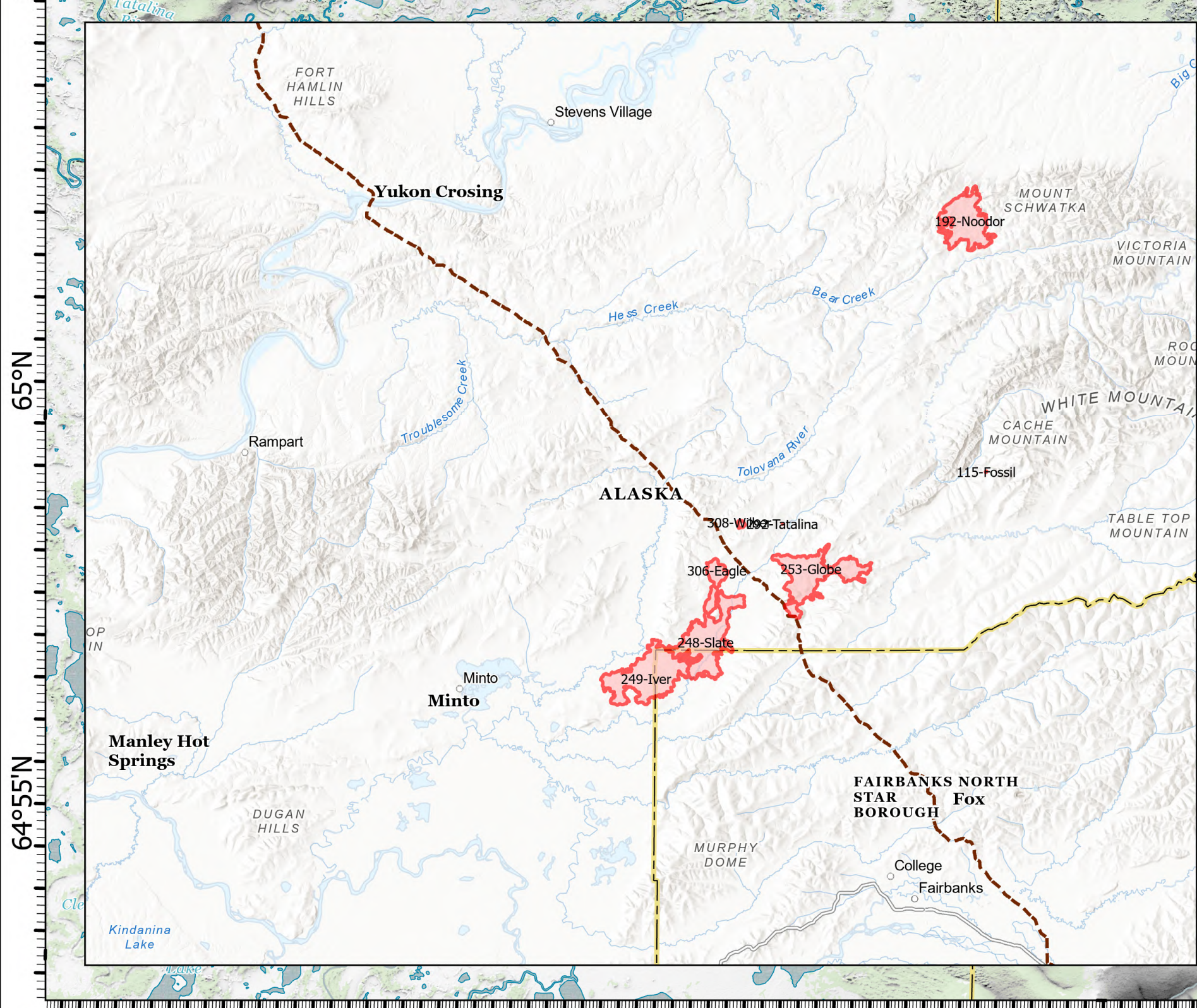
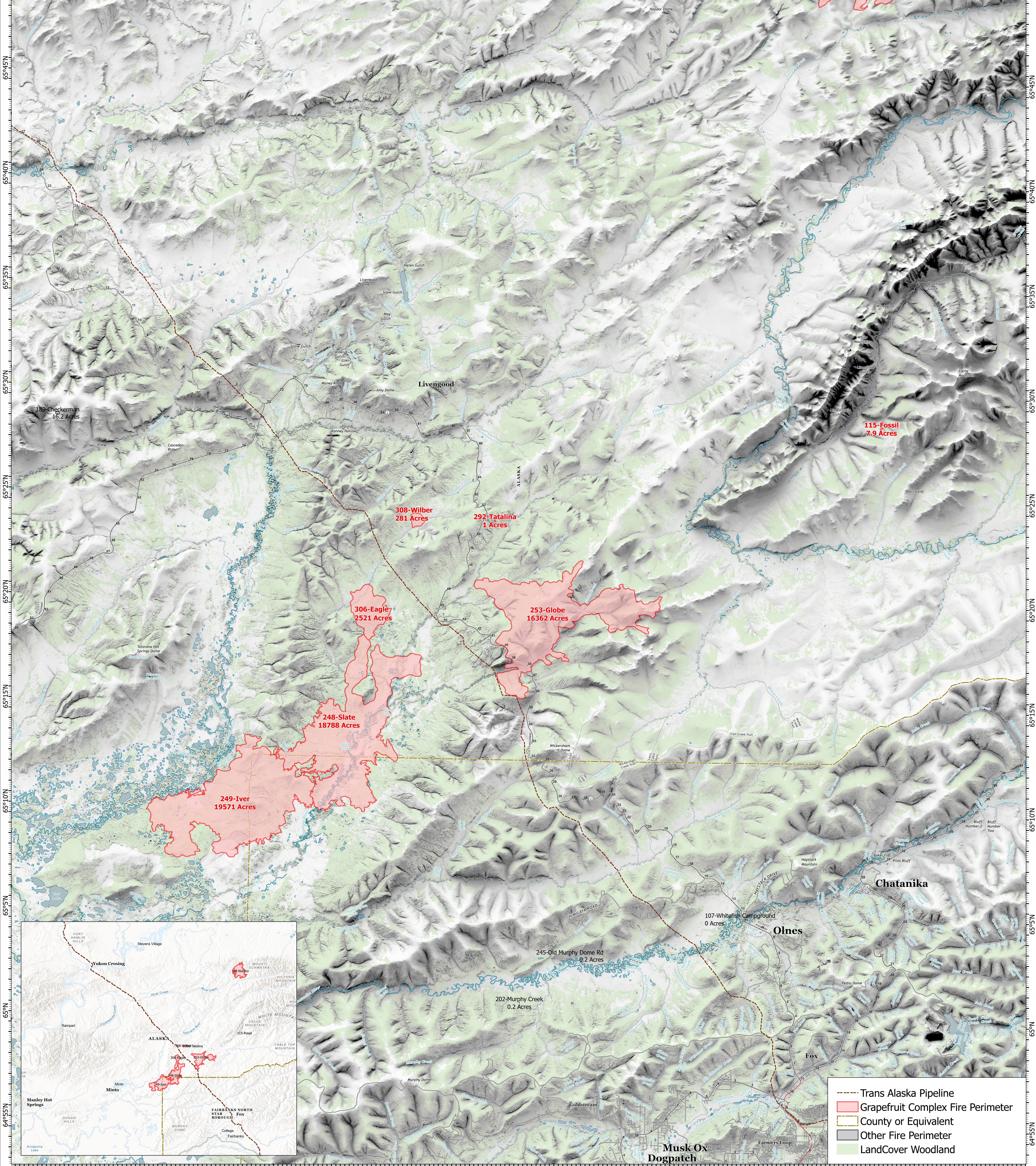




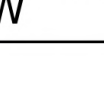


149°10'W 149°5'W 149°W 148°55'W 148°50'W 148°45'W 148°40'W 148°35'W 148°30'W 148°25'W 148°20'W 148°15'W 148°10'W 148°5'W 148°W 147°55'W 147°50'W 147°45'W 147°40'W 147°35'W 147°30'W 147°25'W 147°20'W 147°15'W

**Situation**  
**Grapefruit Complex**  
**AKUYD-000900**  
**7/3/2024**  
*XX,XXX acres at Effective*  
 00.511.522.533.544.555.5  
 Miles  
 1:105,000 | AK IMT | 7/2/2024 2151  
 Acres from IR and GPS  
 North American 1983 Datum, Lat/Long Grid

-  Trans Alaska Pipeline
-  Grapefruit Complex Fire Perimeter
-  County or Equivalent
-  Other Fire Perimeter
-  LandCover Woodland

149°5'W 149°W 148°55'W 148°50'W 148°45'W 148°40'W 148°35'W 148°30'W 148°25'W 148°20'W 148°15'W 148°10'W 148°5'W 148°W 147°55'W 147°50'W 147°45'W 147°40'W 147°35'W 147°30'W 147°25'W 147°20'W 147°15'W