

149°4'W 149°W 148°56'W 148°52'W 148°48'W 148°44'W 148°40'W 148°36'W 148°32'W 148°28'W 148°24'W 148°20'W 148°16'W 148°12'W 148°8'W 148°4'W 148°W 147°56'W 147°52'W 147°48'W 147°44'W 147°40'W 147°36'W 147°32'W

# Air Ops

## Grapefruit Complex

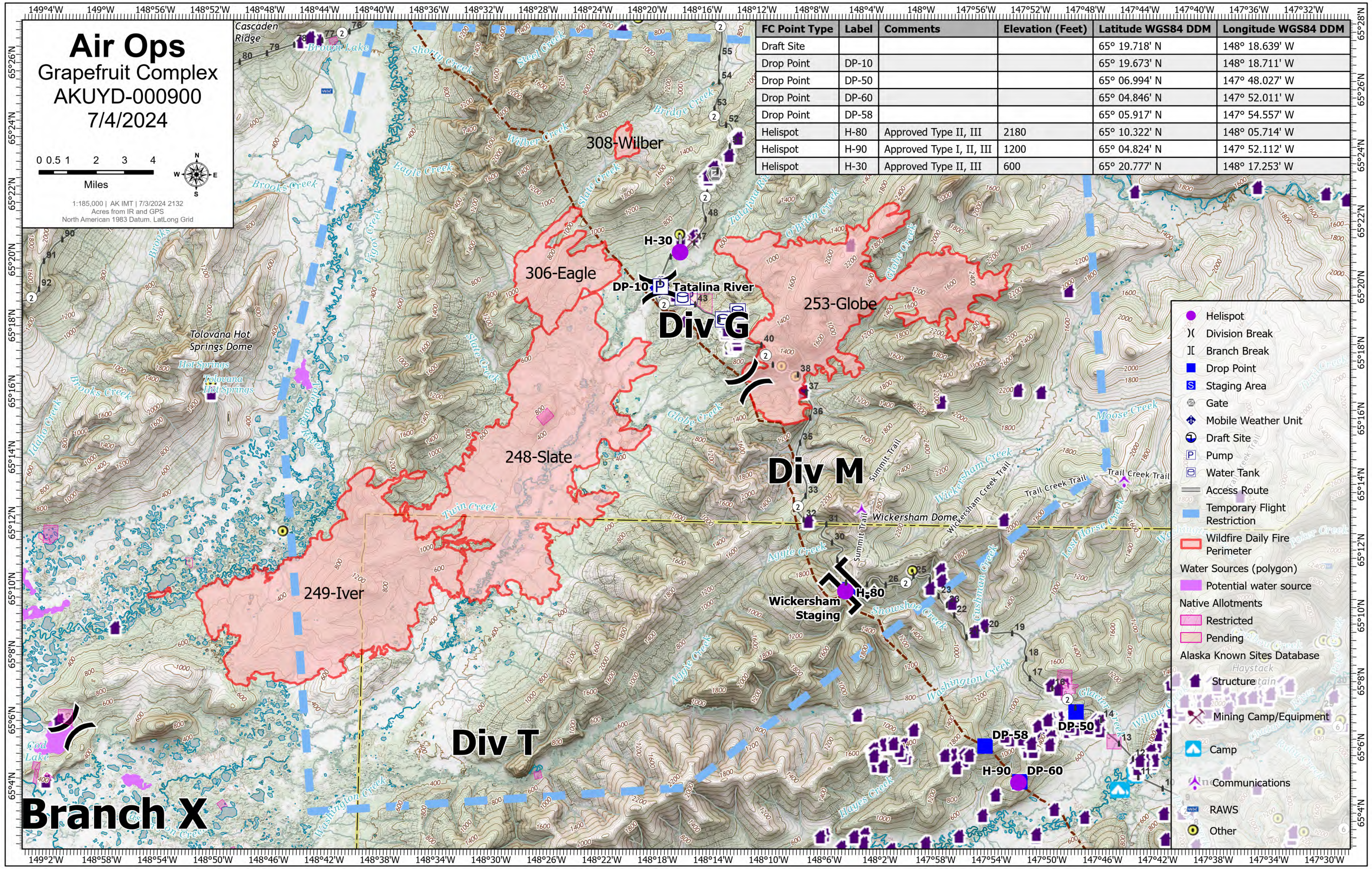
### AKUYD-000900

#### 7/4/2024

0 0.5 1 2 3 4  
Miles

1:185,000 | AK IMT | 7/3/2024 2132  
Acres from IR and GPS  
North American 1983 Datum, LatLong Grid

FC Point Type	Label	Comments	Elevation (Feet)	Latitude WGS84 DDM	Longitude WGS84 DDM
Draft Site				65° 19.718' N	148° 18.639' W
Drop Point	DP-10			65° 19.673' N	148° 18.711' W
Drop Point	DP-50			65° 06.994' N	147° 48.027' W
Drop Point	DP-60			65° 04.846' N	147° 52.011' W
Drop Point	DP-58			65° 05.917' N	147° 54.557' W
Helispot	H-80	Approved Type II, III	2180	65° 10.322' N	148° 05.714' W
Helispot	H-90	Approved Type I, II, III	1200	65° 04.824' N	147° 52.112' W
Helispot	H-30	Approved Type II, III	600	65° 20.777' N	148° 17.253' W



- Helispot
- ) Division Break
- | Branch Break
- Drop Point
- S Staging Area
- ⊗ Gate
- ⊕ Mobile Weather Unit
- ⊙ Draft Site
- P Pump
- ⊞ Water Tank
- Access Route
- Temporary Flight Restriction
- ▭ Wildfire Daily Fire Perimeter
- Water Sources (polygon)
- ▭ Potential water source
- Native Allotments
- ▭ Restricted
- ▭ Pending
- Alaska Known Sites Database
- ⌘ Structure
- ⌘ Mining Camp/Equipment
- ⌘ Camp
- ⌘ Communications
- ⌘ RAWS
- ⊙ Other

# Branch X

149°2'W 148°58'W 148°54'W 148°50'W 148°46'W 148°42'W 148°38'W 148°34'W 148°30'W 148°26'W 148°22'W 148°18'W 148°14'W 148°10'W 148°6'W 148°2'W 147°58'W 147°54'W 147°50'W 147°46'W 147°42'W 147°38'W 147°34'W 147°30'W