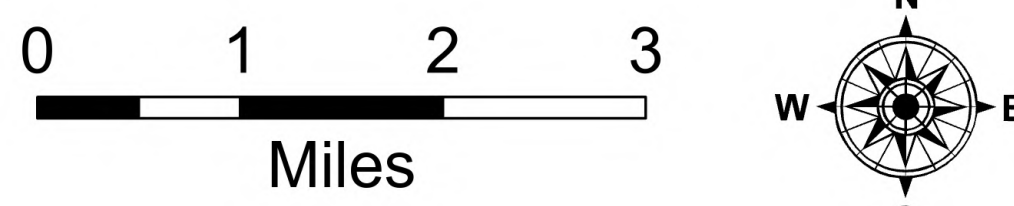


Air Ops

Grapefruit Complex

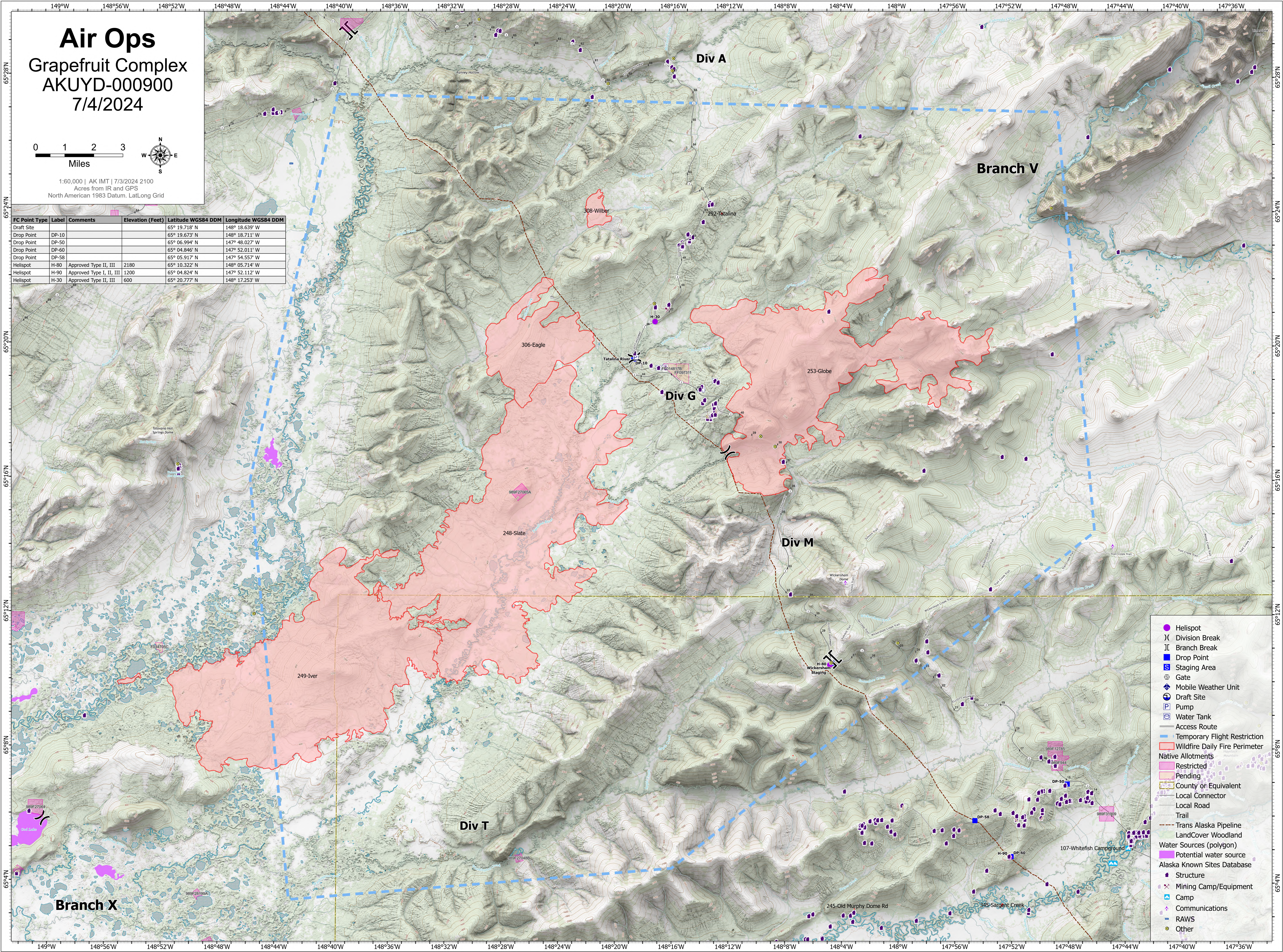
AKUYD-000900

7/4/2024



1:60,000 | AK IMT | 7/3/2024 2100
Acres from IR and GPS
North American 1983 Datum. LatLong Grid

FC Point Type	Label	Comments	Elevation (Feet)	Latitude WGS84 DDM	Longitude WGS84 DDM
Draft Site				65° 19.718' N	148° 18.639' W
Drop Point	DP-10			65° 19.673' N	148° 18.711' W
Drop Point	DP-50			65° 06.994' N	147° 48.027' W
Drop Point	DP-60			65° 04.846' N	147° 52.011' W
Drop Point	DP-58			65° 05.917' N	147° 54.557' W
Helispot	H-80	Approved Type II, III	2180	65° 10.322' N	148° 05.714' W
Helispot	H-90	Approved Type I, II, III	1200	65° 04.824' N	147° 52.112' W
Helispot	H-30	Approved Type II, III	600	65° 20.777' N	148° 17.253' W



- Helispot
- () Division Break
- ⌋ Branch Break
- Drop Point
- ⊞ Staging Area
- ⊞ Gate
- ⊞ Mobile Weather Unit
- ⊞ Draft Site
- ⊞ Pump
- ⊞ Water Tank
- Access Route
- Temporary Flight Restriction
- Wildfire Daily Fire Perimeter
- Native Allotments
- Restricted
- Pending
- County or Equivalent
- Local Connector
- Local Road
- Trail
- Trans Alaska Pipeline
- LandCover Woodland
- Water Sources (polygon)
- Potential water source
- Alaska Known Sites Database
- Structure
- ⊞ Mining Camp/Equipment
- ⊞ Camp
- ⊞ Communications
- ⊞ RAWs
- ⊞ Other