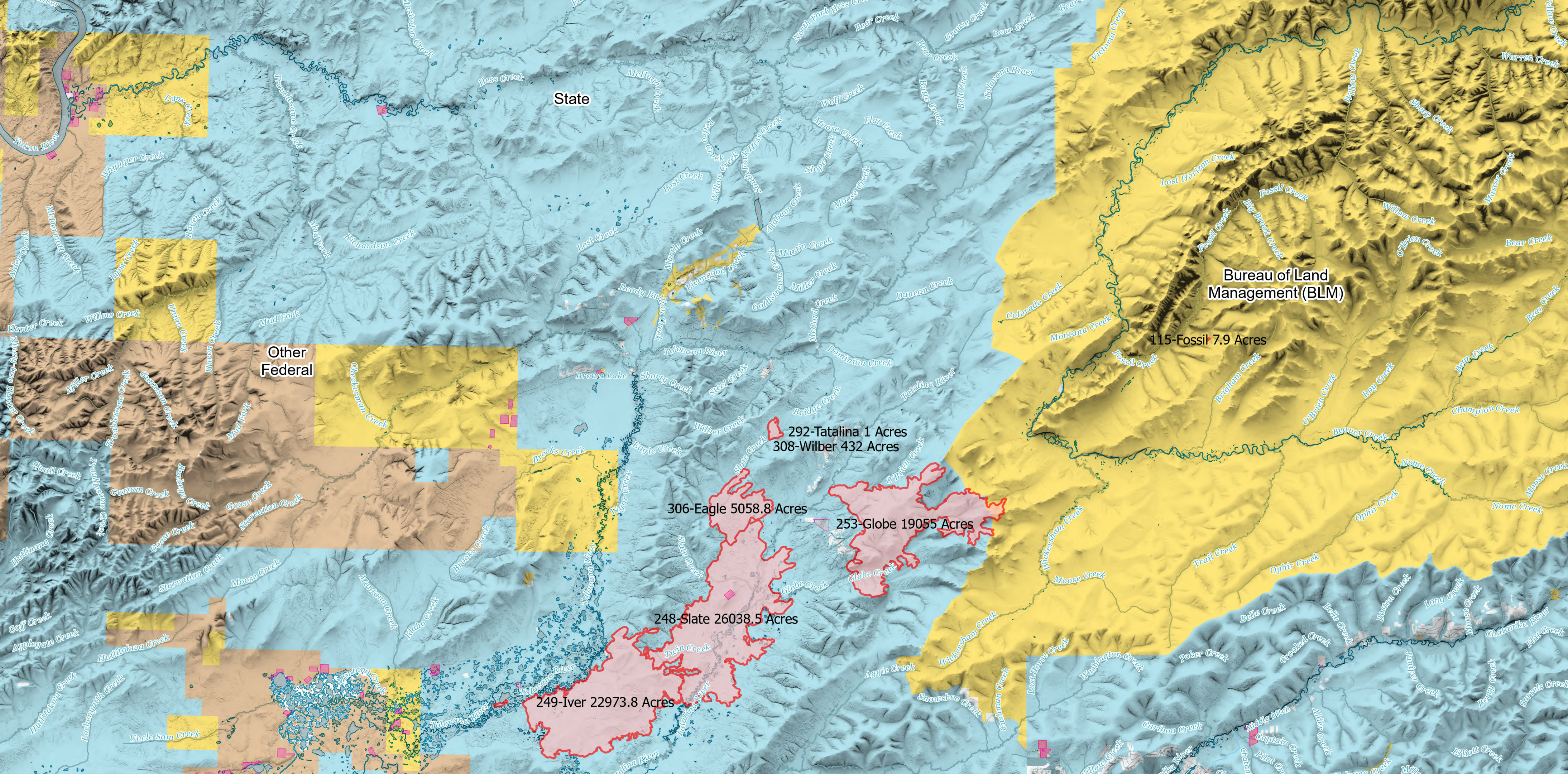


# Ownership

Grapefruit Complex  
AKUYD-000900  
7/4/2024



1:256,000 | AK IMT 1/73/2024 2107



<span style="border: 1px solid red; display: inline-block; width: 10px; height: 10px;"></span> Wildfire Daily Fire Perimeter	<span style="background-color: brown; display: inline-block; width: 10px; height: 10px;"></span> Other Federal
<span style="border: 1px solid pink; display: inline-block; width: 10px; height: 10px;"></span> Restricted	<span style="background-color: lightblue; display: inline-block; width: 10px; height: 10px;"></span> State
<span style="border: 1px solid lightpink; display: inline-block; width: 10px; height: 10px;"></span> Pending	<span style="background-color: green; display: inline-block; width: 10px; height: 10px;"></span> US Fish and Wildlife Service (USFWS)
<span style="background-color: yellow; display: inline-block; width: 10px; height: 10px;"></span> Bureau of Land Management (BLM)	<span style="background-color: white; border: 1px solid black; display: inline-block; width: 10px; height: 10px;"></span> Private
<span style="background-color: grey; display: inline-block; width: 10px; height: 10px;"></span> Local Government	<span style="background-color: white; border: 1px solid black; display: inline-block; width: 10px; height: 10px;"></span> Undetermined

US Fish and Wildlife Service (USFWS)

192-Noodor 13868 Acres

Bureau of Land Management (BLM)

115-Fossil 7.9 Acres

292-Tatalina 1 Acres  
308-Wilber 432 Acres

306-Eagle 5058.8 Acres

253-Globe 19055 Acres

248-Slate 26038.5 Acres

249-Iver 22973.8 Acres

Local Government

GRP	SUM_sum_Area_ACRES
Bureau of Land Management (BLM)	8555.244885
Private	1.004393
State	56796.370821
Undetermined	335.770841
US Fish and Wildlife Service (USFWS)	5156.025972