

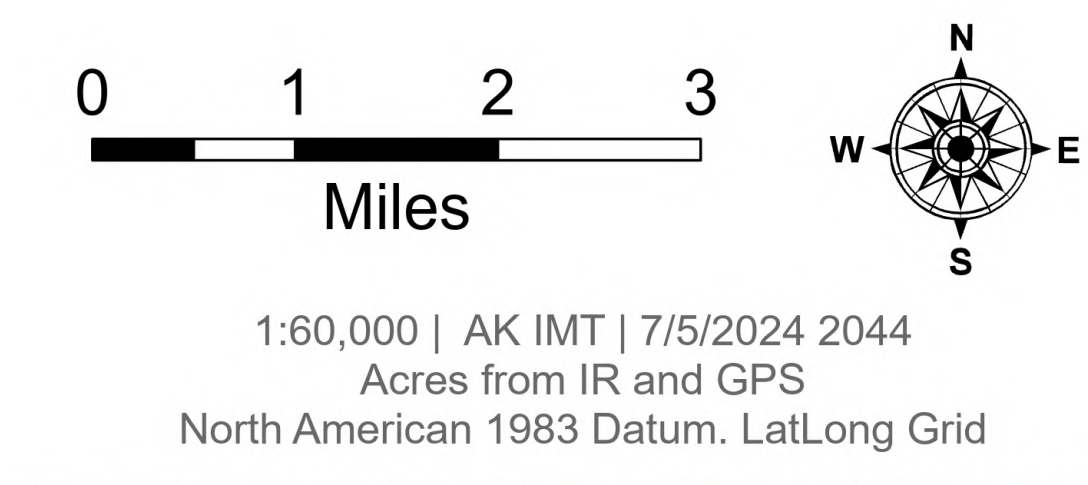
149°W 148°56'W 148°52'W 148°48'W 148°44'W 148°40'W 148°36'W 148°32'W 148°28'W 148°24'W 148°20'W 148°16'W 148°12'W 148°8'W 148°4'W 148°W 147°56'W 147°52'W 147°48'W 147°44'W 147°40'W 147°36'W

Air Ops

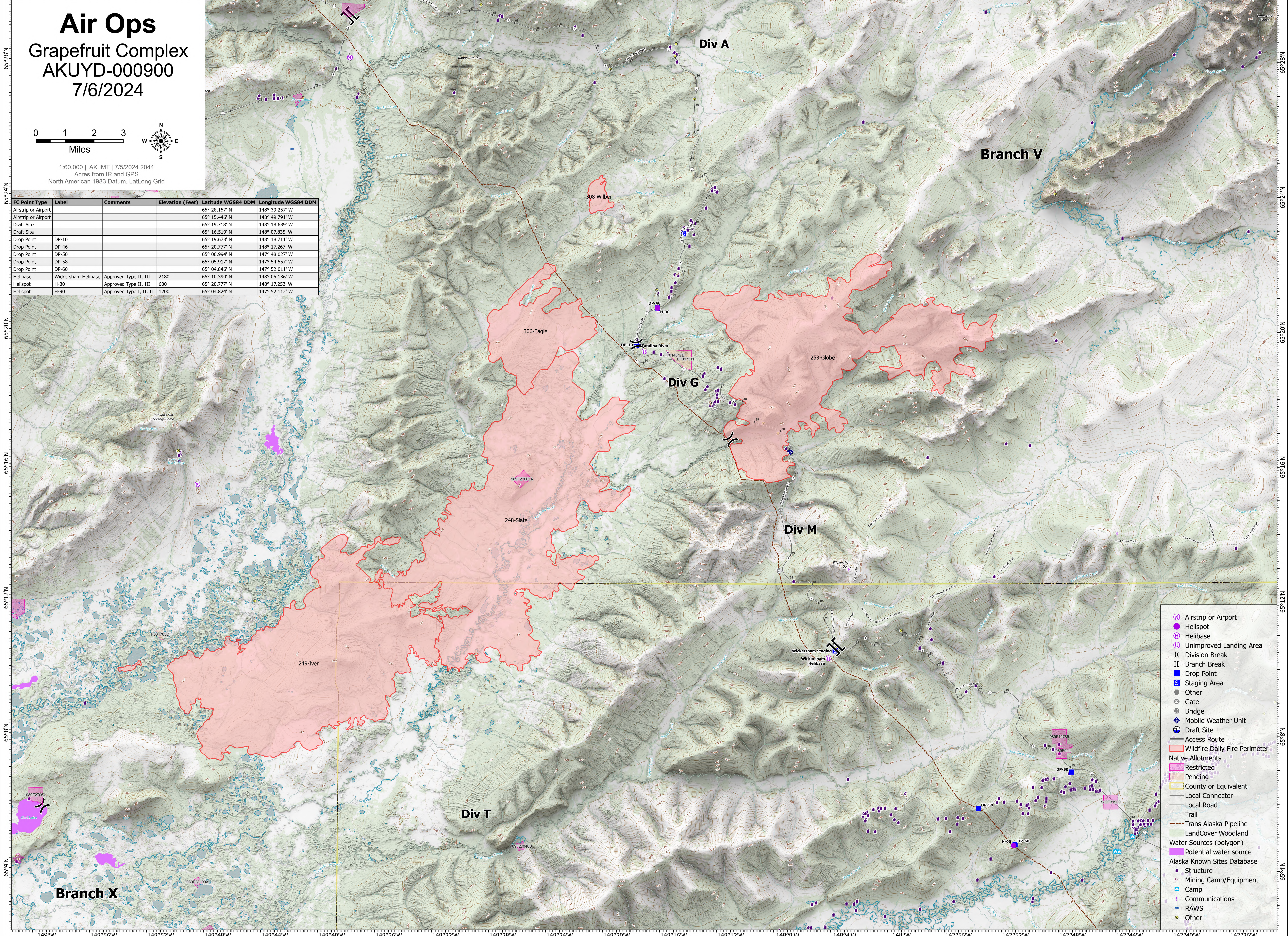
Grapefruit Complex

AKUYD-000900

7/6/2024



FC Point Type	Label	Comments	Elevation (Feet)	Latitude WGS84 DDM	Longitude WGS84 DDM
Airstrip or Airport				65° 28.157' N	148° 39.257' W
Airstrip or Airport				65° 15.446' N	148° 49.791' W
Draft Site				65° 19.718' N	148° 18.639' W
Draft Site				65° 16.519' N	148° 07.835' W
Drop Point	DP-10			65° 19.673' N	148° 18.711' W
Drop Point	DP-46			65° 20.777' N	148° 17.267' W
Drop Point	DP-50			65° 06.994' N	147° 48.027' W
Drop Point	DP-58			65° 05.917' N	147° 54.557' W
Drop Point	DP-60			65° 04.846' N	147° 52.011' W
Helibase	Wickersham Helibase	Approved Type II, III	2180	65° 10.390' N	148° 05.136' W
Helispot	H-30	Approved Type II, III	600	65° 20.777' N	148° 17.253' W
Helispot	H-90	Approved Type I, II, III	1200	65° 04.824' N	147° 52.112' W



- ⊗ Airstrip or Airport
- ⊕ Helispot
- ⊕ Helibase
- ⊕ Unimproved Landing Area
- ⊗ Division Break
- ⊗ Branch Break
- ⊕ Drop Point
- ⊕ Staging Area
- ⊕ Other
- ⊕ Gate
- ⊕ Bridge
- ⊕ Mobile Weather Unit
- ⊕ Draft Site
- Access Route
- Wildfire Daily Fire Perimeter
- Native Allotments
- ⊕ Restricted
- ⊕ Pending
- County or Equivalent
- Local Connector
- Local Road
- Trail
- Trans Alaska Pipeline
- LandCover Woodland
- Water Sources (polygon)
- ⊕ Potential water source
- Alaska Known Sites Database
- ⊕ Structure
- ⊕ Mining Camp/Equipment
- ⊕ Camp
- ⊕ Communications
- ⊕ RAWs
- ⊕ Other

149°W 148°56'W 148°52'W 148°48'W 148°44'W 148°40'W 148°36'W 148°32'W 148°28'W 148°24'W 148°20'W 148°16'W 148°12'W 148°8'W 148°4'W 148°W 147°56'W 147°52'W 147°48'W 147°44'W 147°40'W 147°36'W