

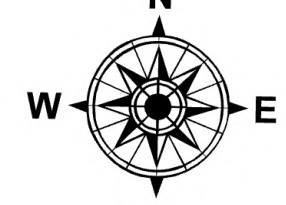
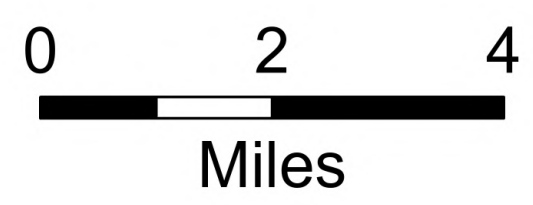
149°10'W 149°5'W 149°W 148°55'W 148°50'W 148°45'W 148°40'W 148°35'W 148°30'W 148°25'W 148°20'W 148°15'W 148°10'W 148°5'W 148°W 147°55'W 147°50'W 147°45'W 147°40'W 147°35'W 147°30'W 147°25'W 147°20'W 147°15'W

Situation

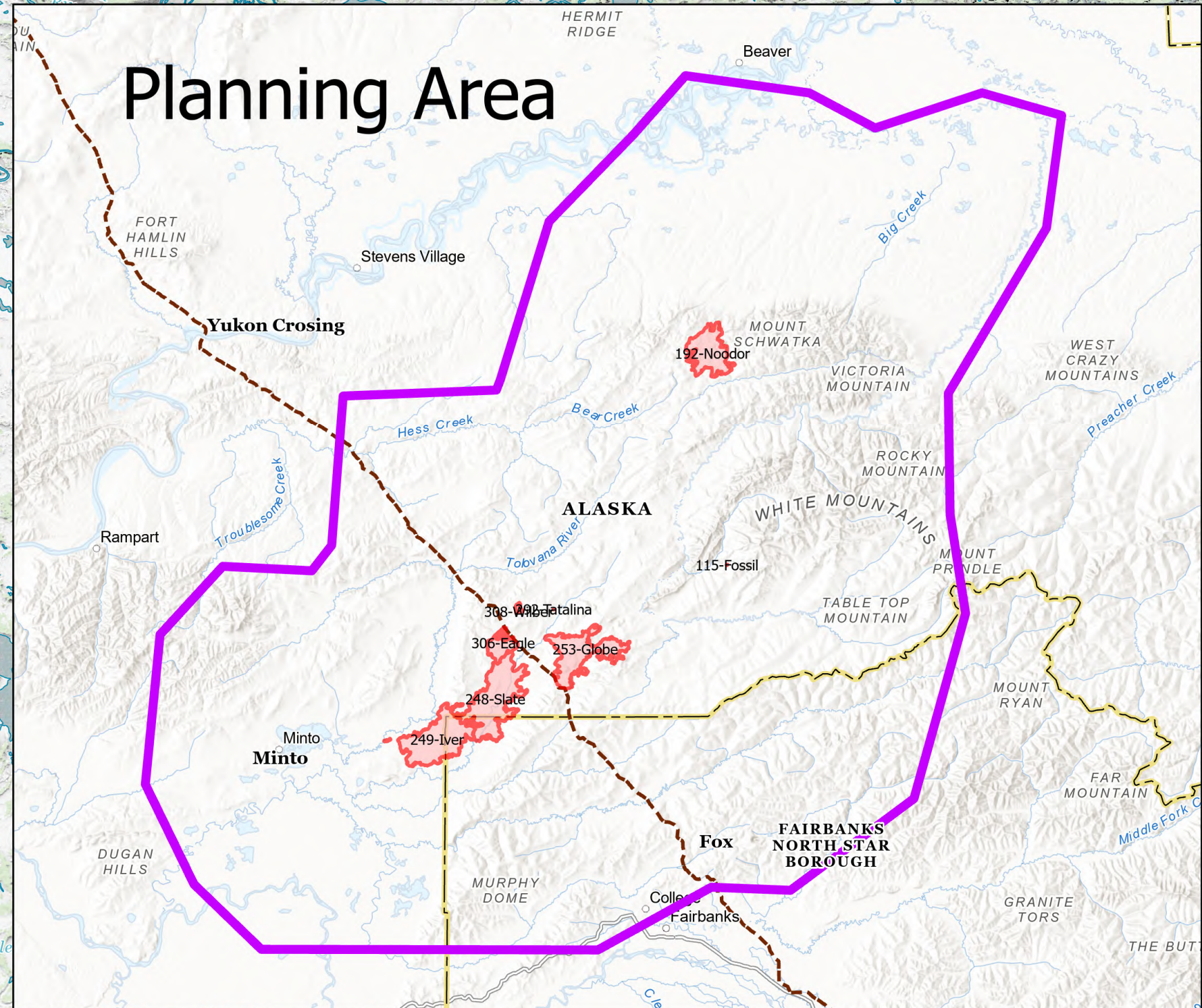
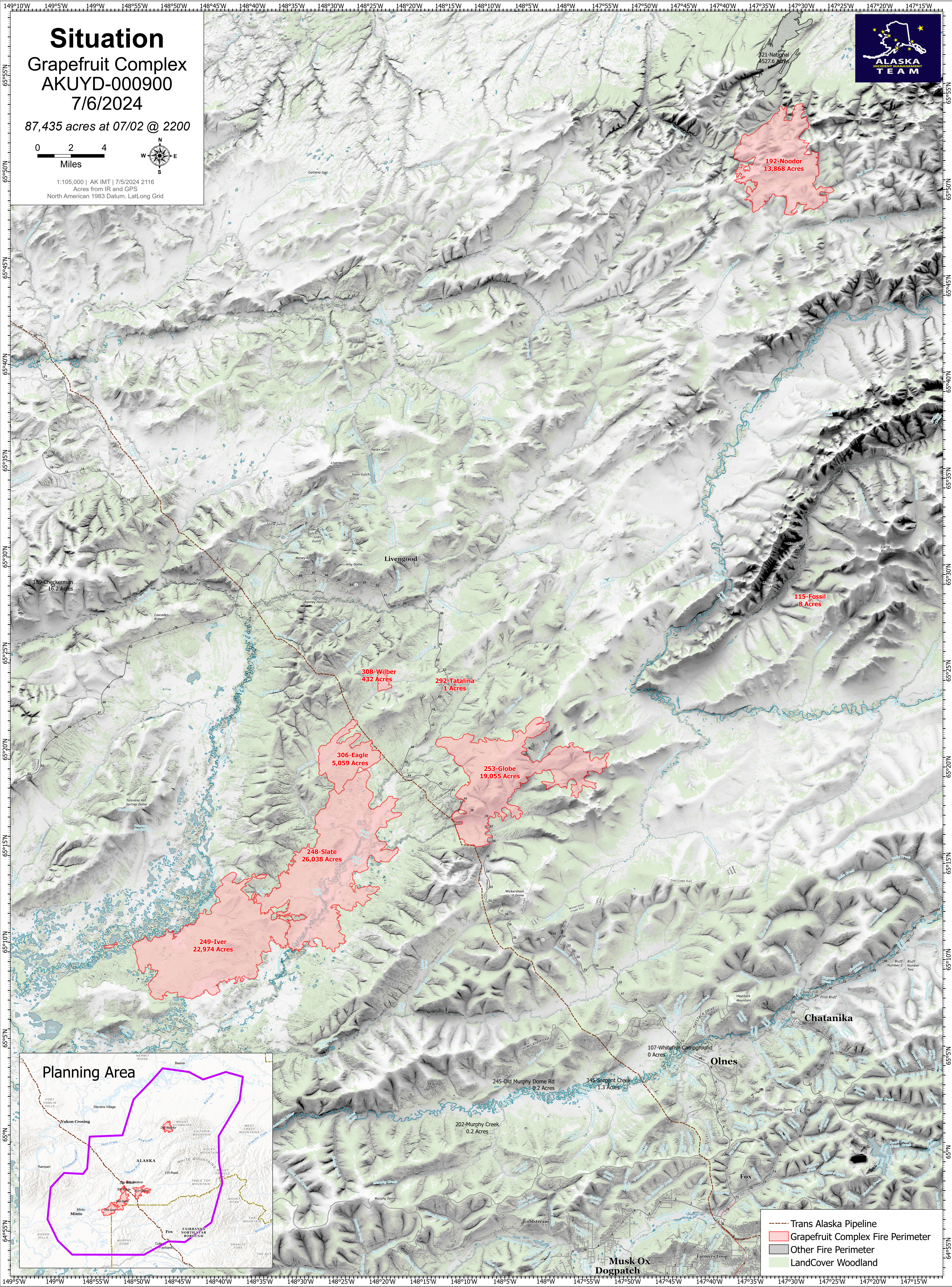
Grapefruit Complex AKUYD-000900

7/6/2024

87,435 acres at 07/02 @ 2200



1:105,000 | AK IMT | 7/5/2024 2116
Acres from IR and GPS
North American 1983 Datum, Lat/Long Grid



- Trans Alaska Pipeline
- ▭ Grapefruit Complex Fire Perimeter
- ▭ Other Fire Perimeter
- ▭ LandCover Woodland

149°5'W 149°W 148°55'W 148°50'W 148°45'W 148°40'W 148°35'W 148°30'W 148°25'W 148°20'W 148°15'W 148°10'W 148°5'W 148°W 147°55'W 147°50'W 147°45'W 147°40'W 147°35'W 147°30'W 147°25'W 147°20'W 147°15'W