

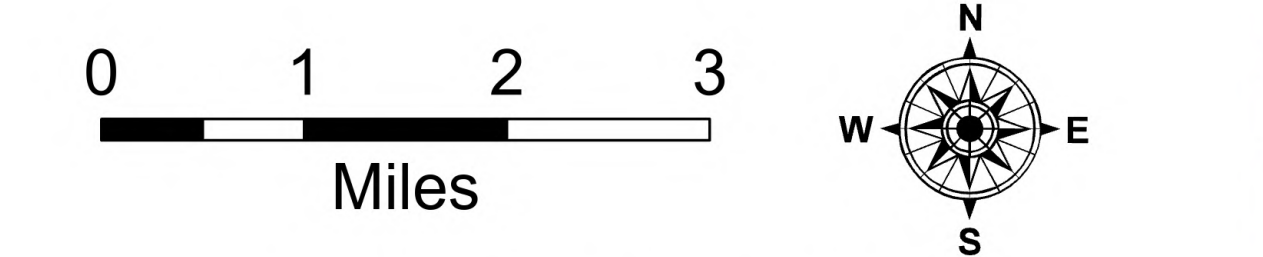
149°W 148°56'W 148°52'W 148°48'W 148°44'W 148°40'W 148°36'W 148°32'W 148°28'W 148°24'W 148°20'W 148°16'W 148°12'W 148°8'W 148°4'W 148°W 147°56'W 147°52'W 147°48'W 147°44'W 147°40'W 147°36'W

# Air Ops

## Grapefruit Complex

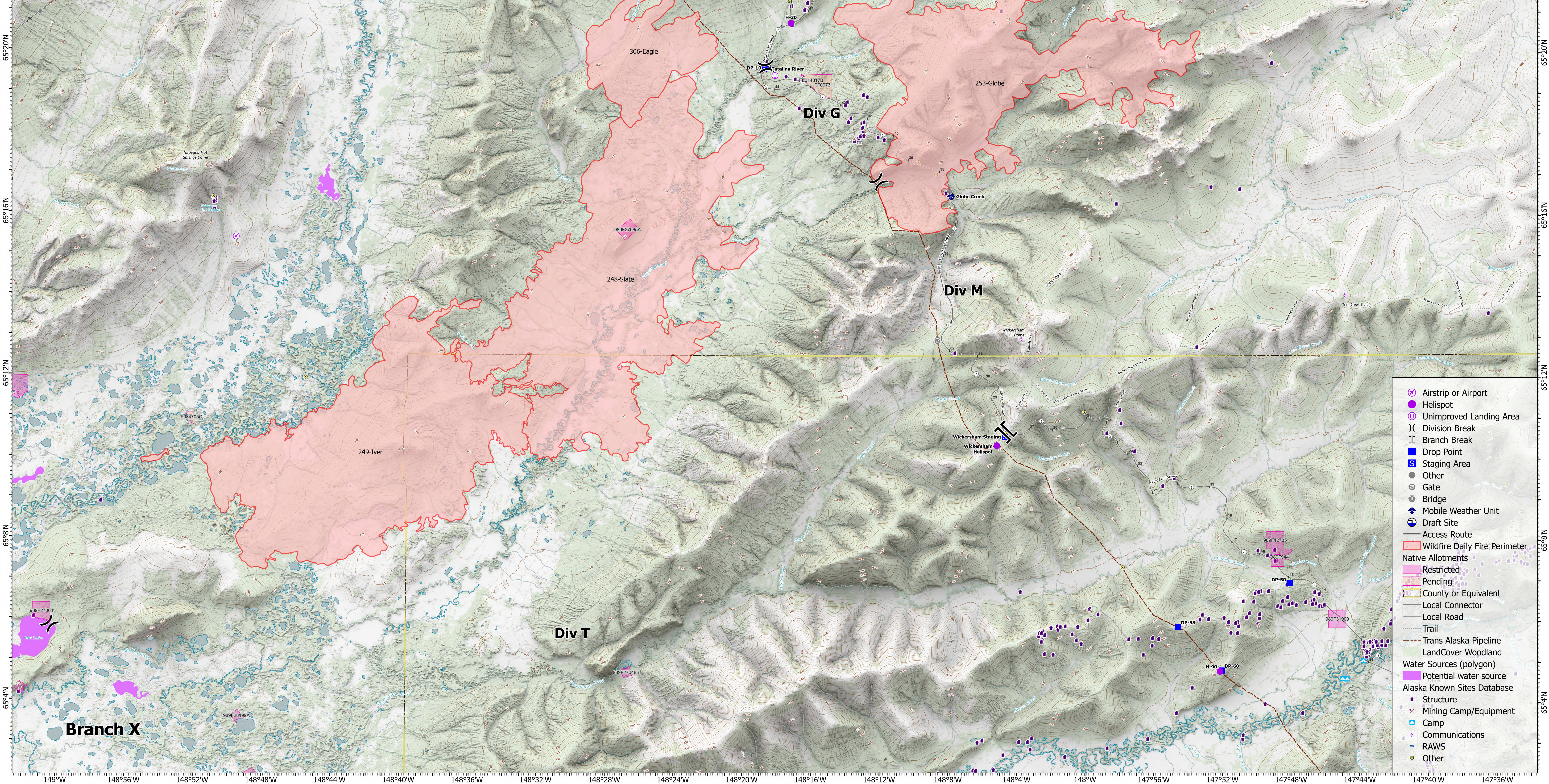
### AKUYD-000900

#### 7/7/2024



1:60,000 | AK IMT | 7/6/2024 1942  
 Acres from IR and GPS  
 North American 1983 Datum, LatLong Grid

FC Point Type	Label	Comments	Elevation (Feet)	Latitude WGS84 DDM	Longitude WGS84 DDM
Airstrip or Airport				65° 28.157' N	148° 39.257' W
Airstrip or Airport				65° 15.446' N	148° 49.791' W
Draft Site				65° 19.718' N	148° 18.639' W
Draft Site				65° 16.519' N	148° 07.835' W
Drop Point	DP-10			65° 19.673' N	148° 18.711' W
Drop Point	DP-50			65° 06.994' N	147° 48.027' W
Drop Point	DP-58			65° 05.917' N	147° 54.557' W
Drop Point	DP-60			65° 04.846' N	147° 52.011' W
Helispot	H-30	Approved Type II, III	600	65° 20.777' N	148° 17.253' W
Helispot	H-90	Approved Type I, II, III	1200	65° 04.824' N	147° 52.112' W
Helispot	Wickersham Helispot	Approved Type II, III	2180	65° 10.390' N	148° 05.136' W



- Airstrip or Airport
- Helispot
- Unimproved Landing Area
- Division Break
- Branch Break
- Drop Point
- Staging Area
- Other
- Gate
- Bridge
- Mobile Weather Unit
- Draft Site
- Access Route
- Wildfire Daily Fire Perimeter
- Native Allotments
- Restricted
- Pending
- County or Equivalent
- Local Connector
- Local Road
- Trail
- Trans Alaska Pipeline
- LandCover Woodland
- Water Sources (polygon)
- Potential water source
- Alaska Known Sites Database
- Structure
- Mining Camp/Equipment
- Camp
- Communications
- RAWs
- Other

149°W 148°56'W 148°52'W 148°48'W 148°44'W 148°40'W 148°36'W 148°32'W 148°28'W 148°24'W 148°20'W 148°16'W 148°12'W 148°8'W 148°4'W 148°W 147°56'W 147°52'W 147°48'W 147°44'W 147°40'W 147°36'W