

148°54'W 148°48'W 148°42'W 148°36'W 148°30'W 148°24'W 148°18'W 148°12'W 148°6'W 148°W 147°54'W 147°48'W 147°42'W 147°36'W

Structure

Grapefruit Complex
AKUYD-000900

7/8/2024



- Airstrip or Airport
- Helispot
- Unimproved Landing Area
- Division Break
- Branch Break
- Drop Point
- Staging Area
- Gate
- Bridge
- Stream Crossing
- Resource Location
- Mobile Weather Unit
- Draft Site
- Completed Dozer Line
- Completed Fuel Break
- Completed Hand Line
- Access Route
- Wildfire Daily Fire Perimeter
- Restricted
- Pending
- County or Equivalent
- Local Connector
- Local Road
- Trail
- Trans Alaska Pipeline
- Milepost
- Structure
- Mining Camp/Equipment
- Camp
- Communications
- RAWS
- Other
- Complete
- In Progress
- Not Assessed
- Division Boundaries

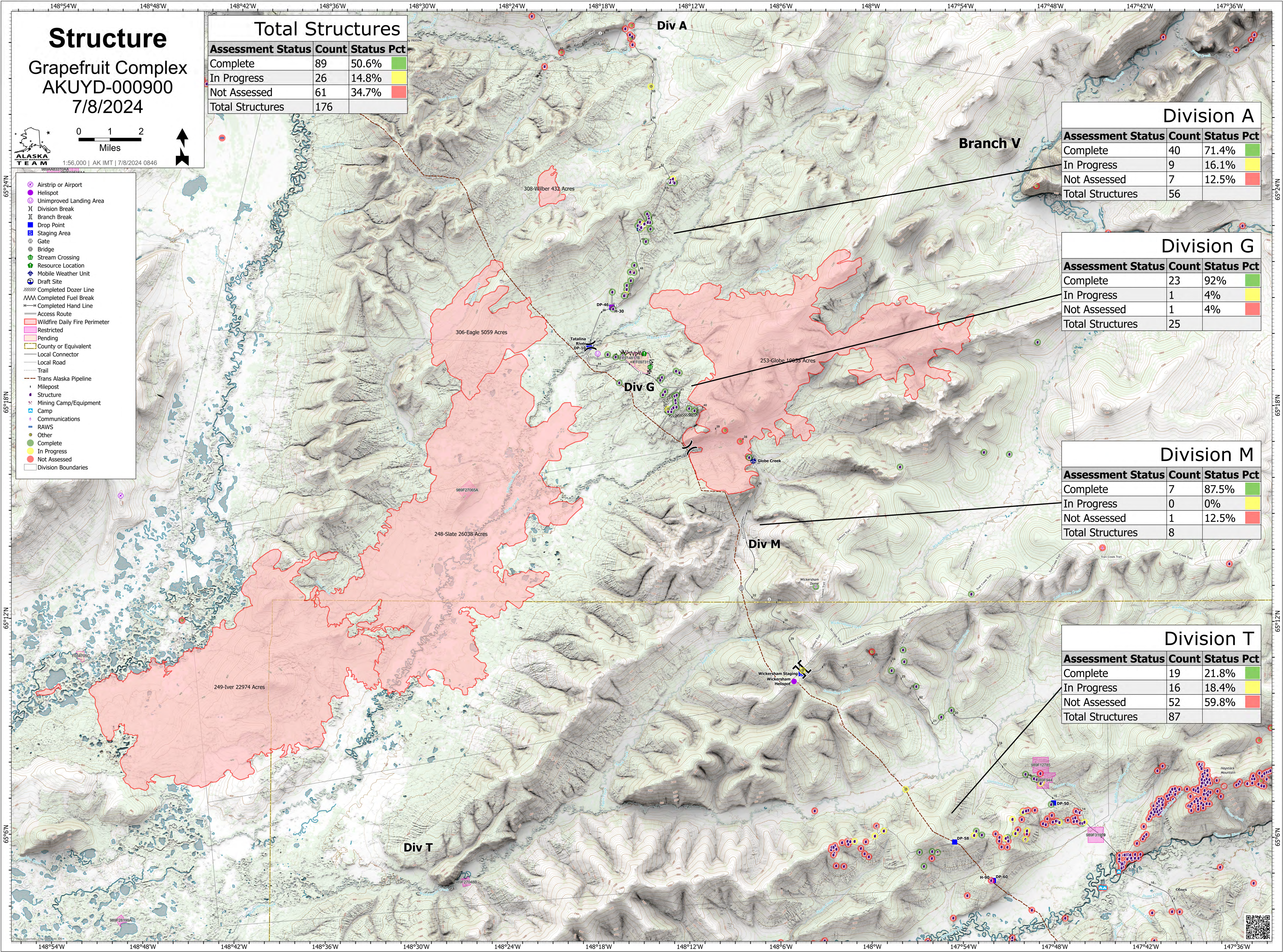
Total Structures		
Assessment Status	Count	Status Pct
Complete	89	50.6%
In Progress	26	14.8%
Not Assessed	61	34.7%
Total Structures	176	

Division A		
Assessment Status	Count	Status Pct
Complete	40	71.4%
In Progress	9	16.1%
Not Assessed	7	12.5%
Total Structures	56	

Division G		
Assessment Status	Count	Status Pct
Complete	23	92%
In Progress	1	4%
Not Assessed	1	4%
Total Structures	25	

Division M		
Assessment Status	Count	Status Pct
Complete	7	87.5%
In Progress	0	0%
Not Assessed	1	12.5%
Total Structures	8	

Division T		
Assessment Status	Count	Status Pct
Complete	19	21.8%
In Progress	16	18.4%
Not Assessed	52	59.8%
Total Structures	87	



148°54'W 148°48'W 148°42'W 148°36'W 148°30'W 148°24'W 148°18'W 148°12'W 148°6'W 148°W 147°54'W 147°48'W 147°42'W 147°36'W