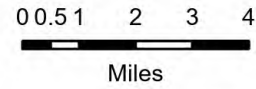


Air Ops

Grapefruit Complex

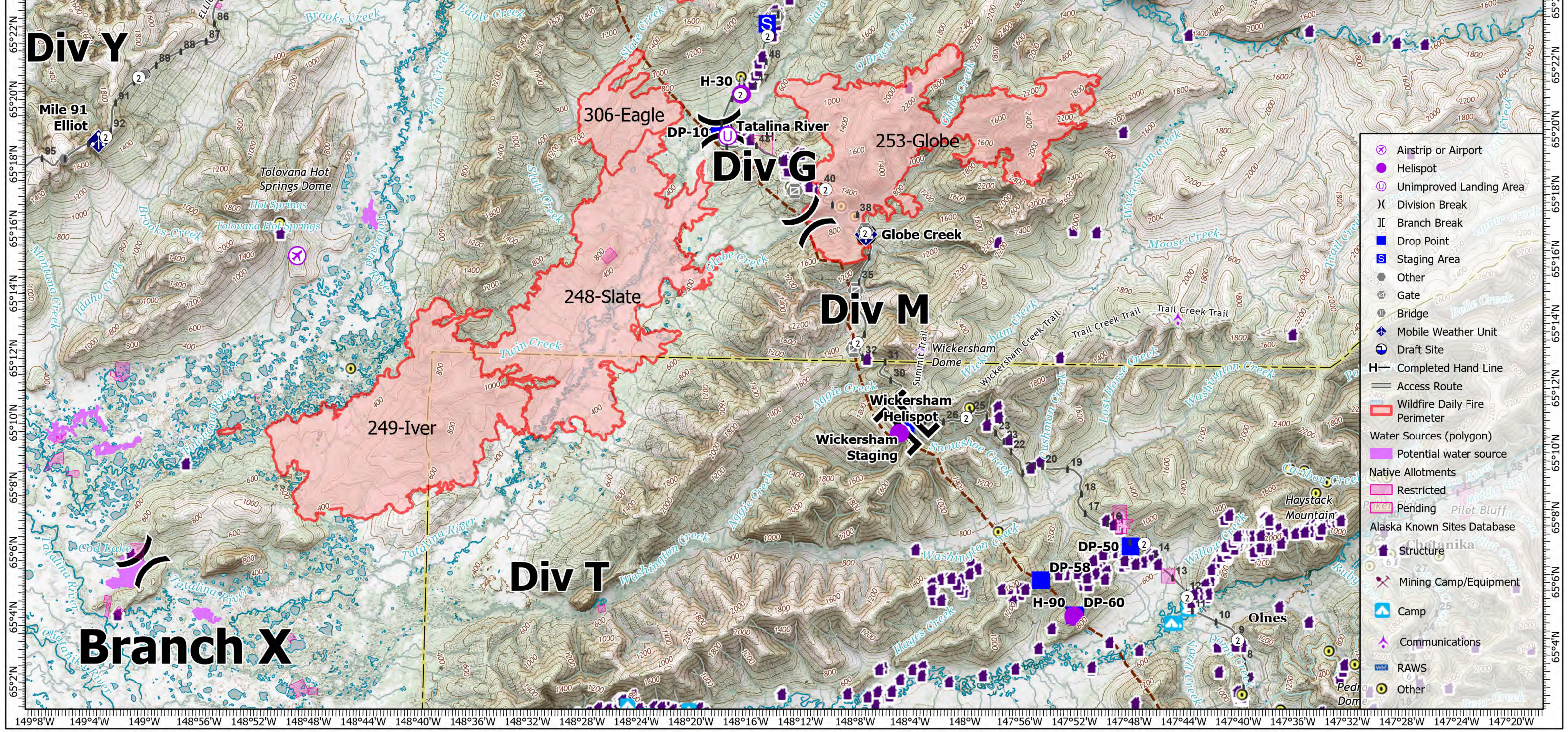
AKUYD-000900

7/10/2024



1:215,000 | AK IMT | 7/9/2024 1942
Acres from IR and GPS
North American 1983 Datum, LatLong Grid

FC Point Type	Label	Comments	Elevation (Feet)	Latitude WGS84	Longitude WGS84
Airstrip or Airport				65° 28.157' N	148° 39.257' W
Airstrip or Airport				65° 15.446' N	148° 49.791' W
Draft Site				65° 19.718' N	148° 18.639' W
Draft Site				65° 16.519' N	148° 07.835' W
Drop Point	DP-10			65° 19.673' N	148° 18.711' W
Drop Point	DP-50			65° 06.994' N	147° 48.027' W
Drop Point	DP-58			65° 05.917' N	147° 54.557' W
Drop Point	DP-60			65° 04.846' N	147° 52.011' W
Helispot	H-30	Approved Type II, III	600	65° 20.777' N	148° 17.253' W
Helispot	H-90	Approved Type I, II, III	1200	65° 04.824' N	147° 52.112' W
Helispot	Wickersham Helispot	Approved Type II, III	2180	65° 10.390' N	148° 05.136' W



- Airstrip or Airport
- Helispot
- Unimproved Landing Area
- Division Break
- Branch Break
- Drop Point
- Staging Area
- Other
- Gate
- Bridge
- Mobile Weather Unit
- Draft Site
- Completed Hand Line
- Access Route
- Wildfire Daily Fire Perimeter
- Water Sources (polygon)
- Potential water source
- Native Allotments
- Restricted
- Pending
- Alaska Known Sites Database
- Structure
- Mining Camp/Equipment
- Camp
- Communications
- RAWS
- Other