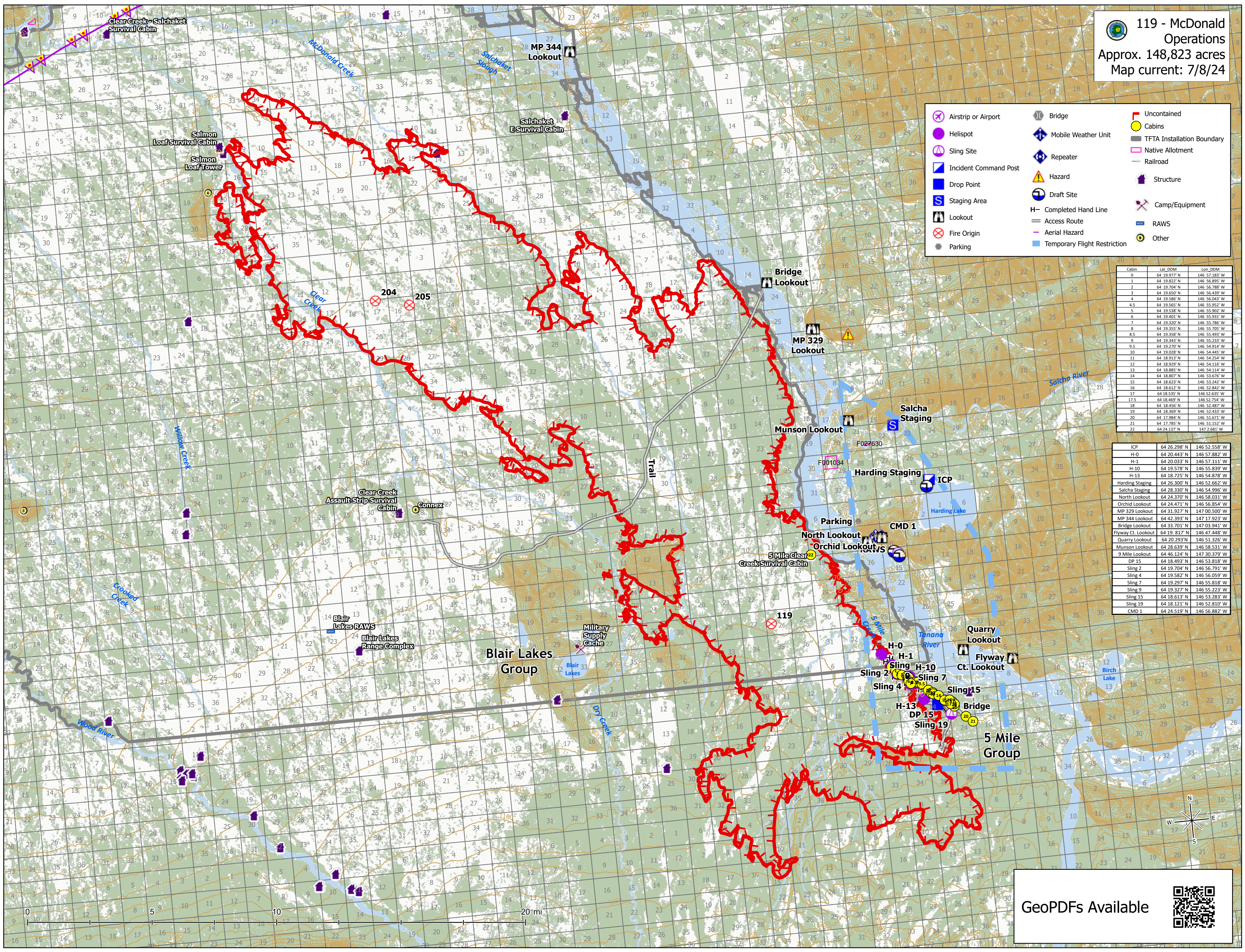


- Airstrip or Airport
- Helispot
- Sling Site
- Incident Command Post
- Drop Point
- Staging Area
- Lookout
- Fire Origin
- Parking
- Bridge
- Mobile Weather Unit
- Repeater
- Hazard
- Draft Site
- Completed Hand Line
- Access Route
- Aerial Hazard
- Temporary Flight Restriction
- Uncontained
- Cabins
- TFTA Installation Boundary
- Native Allotment
- Railroad
- Structure
- Camp/Equipment
- RAWS
- Other

Cabin	Lat_DDM	Lon_DDM
0	64 19.977' N	146 57.183' W
1	64 19.822' N	146 56.895' W
2	64 19.704' N	146 56.788' W
3	64 19.650' N	146 56.439' W
4	64 19.586' N	146 56.943' W
4.5	64 19.565' N	146 55.952' W
5	64 19.538' N	146 55.902' W
6	64 19.401' N	146 55.931' W
7	64 19.320' N	146 55.786' W
8	64 19.355' N	146 55.795' W
8.5	64 19.358' N	146 55.493' W
9	64 19.343' N	146 55.233' W
9.5	64 19.270' N	146 54.914' W
10	64 19.028' N	146 54.445' W
11	64 18.913' N	146 54.254' W
12	64 18.929' N	146 54.116' W
13	64 18.885' N	146 54.114' W
14	64 18.807' N	146 53.676' W
15	64 18.623' N	146 53.242' W
16	64 18.612' N	146 52.842' W
17	64 18.535' N	146 52.635' W
17.5	64 18.469' N	146 52.754' W
18	64 18.456' N	146 52.487' W
19	64 18.369' N	146 52.433' W
20	64 17.984' N	146 51.771' W
21	64 17.785' N	146 51.152' W
22	64 24.137' N	147 2.681' W

ICP	64 26.298' N	146 52.558' W
H-0	64 20.443' N	146 57.882' W
H-1	64 20.033' N	146 57.111' W
H-10	64 19.578' N	146 55.839' W
H-13	64 18.725' N	146 54.878' W
Harding Staging	64 26.300' N	146 52.662' W
Salcha Staging	64 28.330' N	146 54.996' W
North Lookout	64 24.370' N	146 58.031' W
Orchid Lookout	64 24.471' N	146 56.854' W
MP 329 Lookout	64 31.927' N	147 00.500' W
MP 344 Lookout	64 42.393' N	147 17.923' W
Bridge Lookout	64 33.701' N	147 03.941' W
Flyway Ct. Lookout	64 19.817' N	146 47.448' W
Quarry Lookout	64 20.293' N	146 51.326' W
Munson Lookout	64 28.639' N	146 58.531' W
9 Mile Lookout	64 46.124' N	147 30.379' W
DP 15	64 18.493' N	146 53.818' W
Sling 2	64 19.704' N	146 56.791' W
Sling 4	64 19.582' N	146 56.059' W
Sling 7	64 19.297' N	146 55.818' W
Sling 9	64 19.327' N	146 55.223' W
Sling 15	64 18.613' N	146 53.283' W
Sling 19	64 18.121' N	146 52.810' W
CMD 1	64 24.519' N	146 56.882' W



GeoPDFs Available

