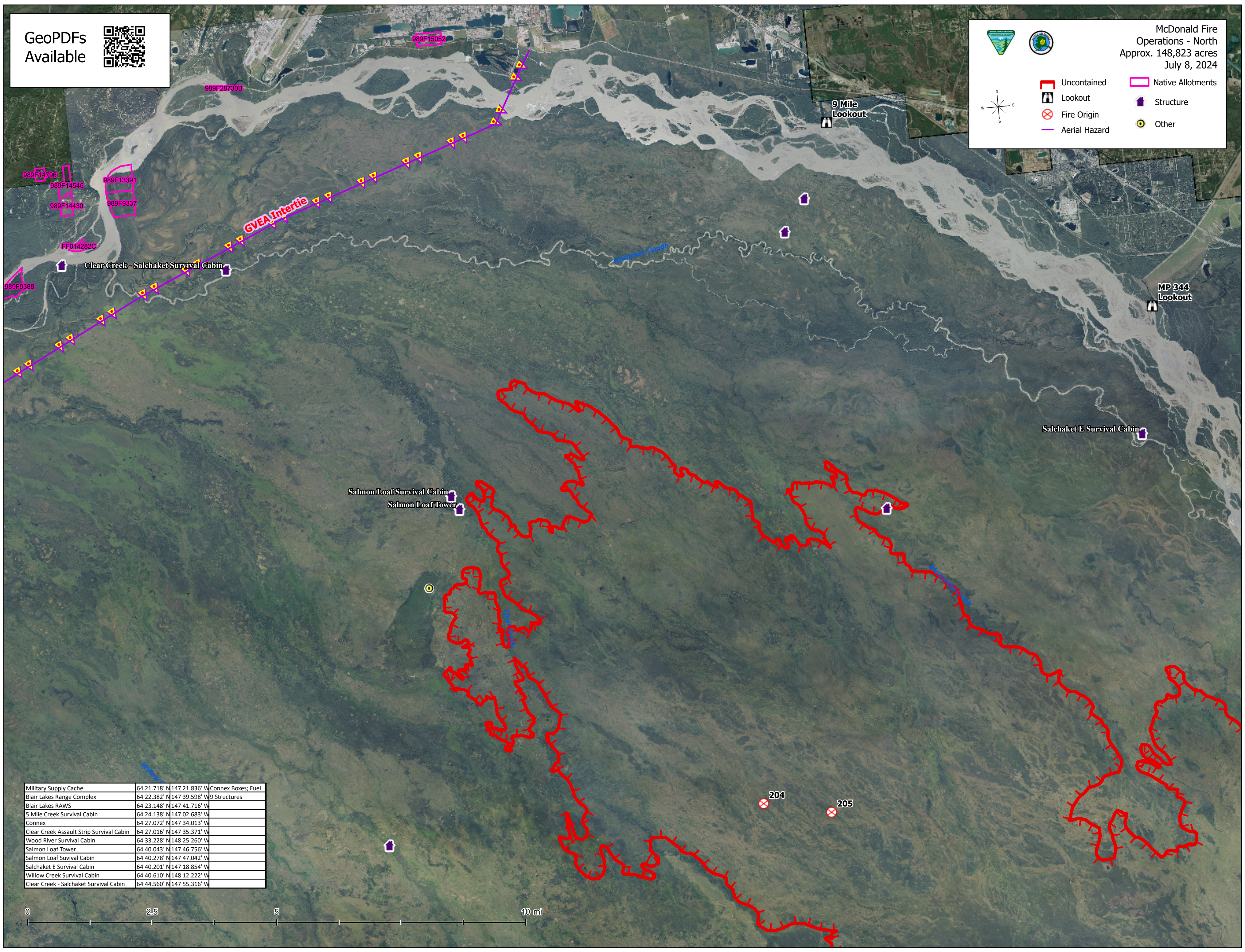


GeoPDFs Available



McDonald Fire
Operations - North
Approx. 148,823 acres
July 8, 2024

▬ Uncontained
🏠 Lookout
⊗ Fire Origin
— Aerial Hazard
▭ Native Allotments
🏠 Structure
● Other



Military Supply Cache	64 21.718' N 147 21.836' W	Connex Boxes; Fuel
Blair Lakes Range Complex	64 22.382' N 147 39.598' W	9 Structures
Blair Lakes RAWs	64 23.148' N 147 41.716' W	
5 Mile Creek Survival Cabin	64 24.138' N 147 02.683' W	
Connex	64 27.072' N 147 34.013' W	
Clear Creek Assault Strip Survival Cabin	64 27.016' N 147 35.371' W	
Wood River Survival Cabin	64 33.228' N 148 25.260' W	
Salmon Loaf Tower	64 40.043' N 147 46.756' W	
Salmon Loaf Survival Cabin	64 40.278' N 147 47.042' W	
Salchaket E Survival Cabin	64 40.201' N 147 18.854' W	
Willow Creek Survival Cabin	64 40.610' N 148 12.222' W	
Clear Creek - Salchaket Survival Cabin	64 44.560' N 147 55.316' W	

