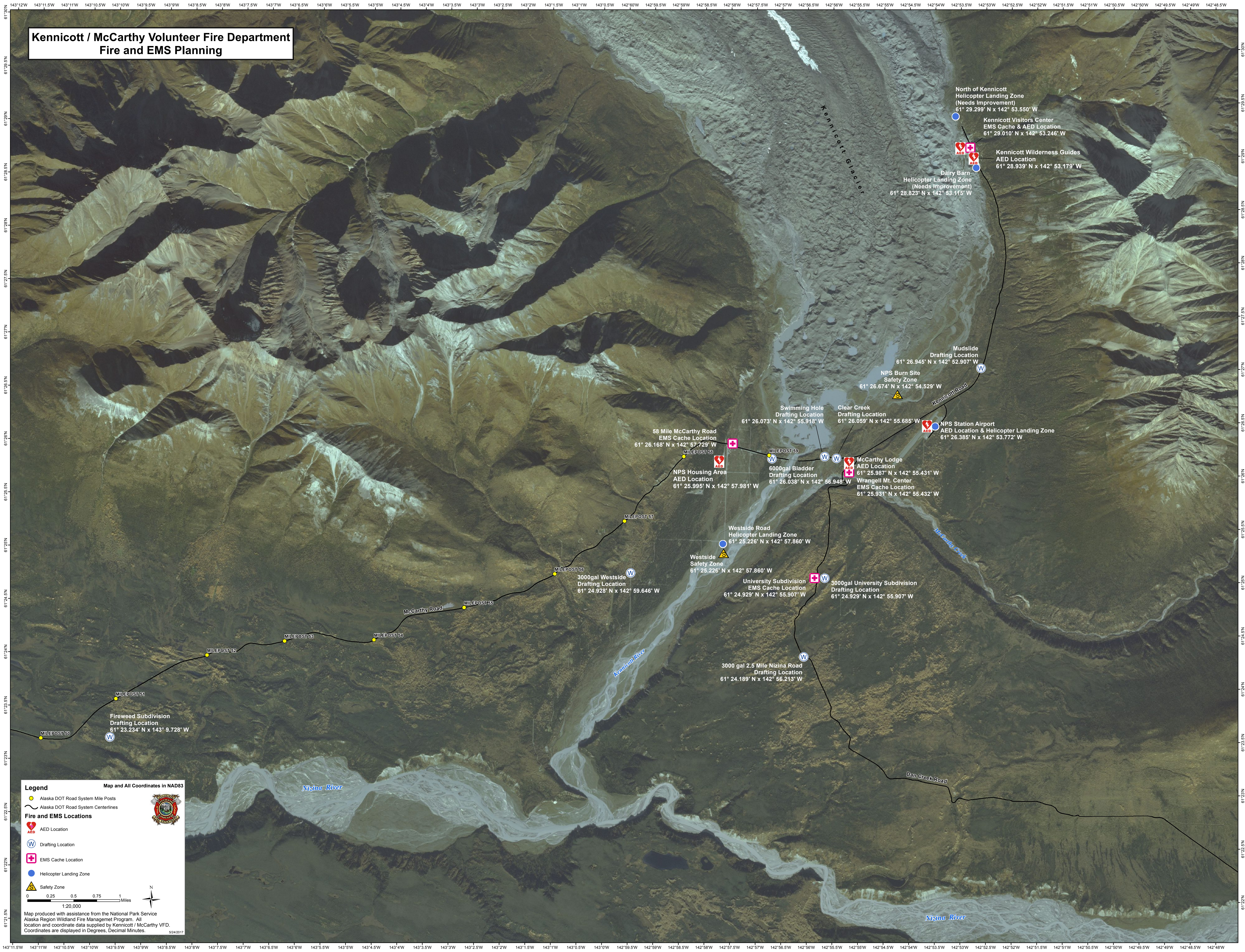


# Kennicott / McCarthy Volunteer Fire Department Fire and EMS Planning



**Legend** Map and All Coordinates in NAD83

- Alaska DOT Road System Mile Posts
- Alaska DOT Road System Centerlines

**Fire and EMS Locations**

- AED Location
- Drafting Location
- EMS Cache Location
- Helicopter Landing Zone
- Safety Zone

0 0.25 0.5 0.75 1 Miles  
1:20,000

Map produced with assistance from the National Park Service Alaska Region Wildland Fire Management Program. All location and coordinate data supplied by Kennicott / McCarthy VFD. Coordinates are displayed in Degrees, Decimal Minutes.

North of Kennicott  
Helicopter Landing Zone  
(Needs Improvement)  
61° 29.299' N x 142° 53.550' W

Kennicott Visitors Center  
EMS Cache & AED Location  
61° 29.010' N x 142° 53.246' W

Kennicott Wilderness Guides  
AED Location  
61° 28.939' N x 142° 53.179' W

Dairy Barn  
Helicopter Landing Zone  
(Needs Improvement)  
61° 28.823' N x 142° 53.115' W

Mudslide  
Drafting Location  
61° 26.945' N x 142° 52.907' W

NPS Burn Site  
Safety Zone  
61° 26.674' N x 142° 54.529' W

Swimming Hole  
Drafting Location  
61° 26.073' N x 142° 55.918' W

Clear Creek  
Drafting Location  
61° 26.059' N x 142° 55.685' W

NPS Station Airport  
AED Location & Helicopter Landing Zone  
61° 26.385' N x 142° 53.772' W

58 Mile McCarthy Road  
EMS Cache Location  
61° 26.168' N x 142° 57.729' W

NPS Housing Area  
AED Location  
61° 25.995' N x 142° 57.981' W

6000gal Bladder  
Drafting Location  
61° 26.038' N x 142° 56.948' W

McCarthy Lodge  
AED Location  
61° 25.987' N x 142° 55.431' W

Wrangell Mt. Center  
EMS Cache Location  
61° 25.931' N x 142° 55.432' W

Westside Road  
Helicopter Landing Zone  
61° 25.226' N x 142° 57.660' W

Westside  
Safety Zone  
61° 25.226' N x 142° 57.860' W

3000gal Westside  
Drafting Location  
61° 24.928' N x 142° 59.646' W

University Subdivision  
EMS Cache Location  
61° 24.929' N x 142° 55.907' W

3000gal University Subdivision  
Drafting Location  
61° 24.929' N x 142° 55.907' W

McCarthy Road

3000 gal 2.5 Mile Nizina Road  
Drafting Location  
61° 24.189' N x 142° 56.213' W

Fireweed Subdivision  
Drafting Location  
61° 23.234' N x 143° 9.728' W

