

Friday

# INCIDENT ACTION PLAN SHELLY INCIDENT

CA-KNF-005159  
P5 R18J (0505)



## OPERATIONAL PERIOD

7/26/2024 0700

to

7/27/2024 0700



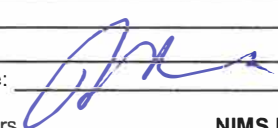
Check-In, IAP, Maps  
Demob, Briefing

THIS PAGE INTENTIONALLY LEFT BLANK

# INCIDENT OBJECTIVES (ICS 202)

<b>1. Incident Name:</b> <p style="text-align: center;">SHELLY</p>	<b>2. Operational Period:</b>	Date From: 7/26/2024 Time From: 0700	Date To: 7/27/2024 Time To: 0700
<b>3. Objective(s):</b>			
<p><b><u>Leaders Intent</u></b></p> <ul style="list-style-type: none"> <li>- Implement a full suppression strategy on the Shelly Fire. The identified values at risk include human safety, private timberlands, communities, cultural resources, and wilderness areas. Apply tactics that offer the highest probability of success.</li> <li>- All incident assigned personnel should be prepared to take appropriate actions regarding:                             <ul style="list-style-type: none"> <li>• Personal safety and the safety of others, including driving slowly and defensively.</li> <li>• Professional behavior, conduct, and timely / effective communication.</li> <li>• Manage fatigue by taking breaks and maintaining work / rest cycles.</li> <li>• Provide the highest level of customer service to all involved with or impacted by the Shelly Fire.</li> </ul> </li> </ul>			
<p><b><u>Management Objectives</u></b></p> <ul style="list-style-type: none"> <li>- Provide for firefighter and public safety through hazard recognition and application of the risk management process.</li> <li>- Coordinate all public information to provide timely and continuous information to affected agency partners, cooperators, and to the public.</li> <li>- Coordinate suppression activities with assigned incident Resource Advisors to minimize impacts on natural and cultural resources.</li> <li>- Maintain relationships with partner agencies, elected officials, organizations, tribes, neighboring landowners, and community groups and members.</li> <li>- Implement fire suppression repair activities in accordance with approved suppression repair plans.</li> </ul>			
<p><b><u>Control Objectives</u></b></p> <ul style="list-style-type: none"> <li>- Keep the Shelly Fire contained to the current fire perimeter to prevent the fire from spreading to private property, surrounding communities and values at risk.</li> <li>- Stay in alignment with the Incident Suppression Repair Plan in conjunction with Agency Administrators.</li> </ul>			
<b>5. Site Safety Plan Required?</b> Yes <input type="checkbox"/> No <input checked="" type="checkbox"/>			
<b>Approved Site Safety Plan(s) Located at:</b>			
<b>6. Incident Action Plan</b>			
<input checked="" type="checkbox"/> ICS 203 <input checked="" type="checkbox"/> ICS 204 <input checked="" type="checkbox"/> ICS 205 <input checked="" type="checkbox"/> ICS 206 <input checked="" type="checkbox"/> ICS 208	<input type="checkbox"/> ICS 215A <input checked="" type="checkbox"/> ICS 220 <input checked="" type="checkbox"/> Facility Maps <input checked="" type="checkbox"/> Weather Forecast <input checked="" type="checkbox"/> Fire Behavior	<input checked="" type="checkbox"/> HR Message <input checked="" type="checkbox"/> Training Message <input checked="" type="checkbox"/> Travel Map <input checked="" type="checkbox"/> Demob Plan <input checked="" type="checkbox"/> Finance Message	<input checked="" type="checkbox"/> PIO Message <input type="checkbox"/> Helicopter Extraction Operations <input checked="" type="checkbox"/> Fire Supression Repair Plan <input type="checkbox"/> Line Order Worksheet <input checked="" type="checkbox"/> ICS 214
<b>7. Prepared By:</b> G. Funderburk / G. Garcia / J. Roberts (T)		Position/Title: PSC	
<b>8. Approved by Incident Commander:</b> ICS 202		J. Goss / G. Magaña J. McGowan / J. McGough K. Allison (T)	
		Signature:	
		Signature:	

## ORGANIZATION ASSIGNMENT LIST (ICS 203)

<b>1. Incident Name:</b> SHELLY		<b>2. Operational Period: Date From:</b> 7/26/2024 Time From: 0700		<b>Date To:</b> 7/27/2024 <b>Time To:</b> 0700	
<b>3. Incident Commander(s) and Command Staff:</b>			<b>7. Operation Section:</b>		
IC/UC's	J. Goss / G. Magaña / J. McGough (T) / K. Allison (T)	Operations	T. Thane / E. Schwab / C. Childers / M. Todd (T)		
Deputy	J. McGowan / K. Tsudama (T)	Deputy Operations	S. Lane / D. Esades (T)		
Safety Officer	J. Nickey / T. Mott / J. Novak	Night Ops			
Information Officer	D. Carlisi / R. Lubben				
Liaison Officer	D. Miller (T) / K. O'Hara / L. Ocampo	<b>Branch</b>	<b>X</b>	<b>S. Santos</b>	
<b>4. Agency/Organization Representatives:</b>		Division/Group	A	R. Riddle	
Agency/Organization	Name	Division/Group	B/C	D. Havlina	
USFS	J. Kuiken / D. Carlson (T)	Division/Group	FSR 1	G. Pelsma	
CALFIRE	G. Roath	Division/Group	ROAD	D. Fraley	
CDCR	J. Leventon	Division/Group			
CCC	B. Cody (Yreka) / A. Garcia (Etna)	<b>Branch</b>	<b>XX</b>		
Timber Industries	D. Quigley	Division/Group	D/E	K. Cummings	
READ	C. Atwood / C. Vialpando	Division/Group			
BIA	G. Perry	Division/Group			
Quartz Valley Tribe	Chairman H. Bennett	Division/Group			
OES	R. Young	Division/Group			
		<b>Branch</b>	<b>XXX</b>	<b>M. Johnson (T)</b>	
		Division/Group	F/G/M	J. McCarty	
		Division/Group	T	J. Airhart	
		Division/Group			
		Division/Group			
		<b>Branch</b>	<b>FSR</b>	<b>S. Pindell / S. Wilson (Dep.)</b>	
		Division/Group	FSR North	J. Karp	
<b>5. Planning Section:</b>		Division/Group	FSR South	J. Wildt (T)	
Chief	G. Funderburk / G. Garcia / J. Roberts (T)	Division/Group			
Deputy	J. Worden / J. Anderson (T)	Division/Group			
Resource Unit	B. Dameron / T. Lewis / M. Thomas J. Abasolo / B. Brown (T) / T. Hullquist (T)	Division/Group			
Situation Unit	J. Handrick / J. Abeel	<b>Branch</b>			
Documentation Unit	RIST	Division/Group			
Demobilization Unit	E. Morgan / E. Litteral	Division/Group			
GISS	M. Hans / J. Roberts / D. Beasley (V) / C. Poli D. Watkins (T) / A. Mead (T)	Division/Group			
FBAN	S. Volmer / A. Giery (T)	Division/Group			
IMET	D. Shallenberger / C. Ledbetter (T)	Division/Group			
Training Tech Spec	R. Rivelle / S. Vargas	<b>Air Operations Branch</b>		<b>Director:</b>	R. Terracciano / T. Swanson / C. Wallace (T)
SOPL	P. Doyle	Air Support Group Supervisor		K. Christy	
ITSS	U. Huerta / J. Huerta	Air Tactical Group Supervisor		I. Flattley / L. Murphy (T)	
<b>6. Logistics Section</b>		Scott Valley Helibase Manager		L. Stewart	
Chief	D. Winn / D. Turner / R. David / J. Warden	Siskiyou County Helibase Manager		J. Carstensen	
Supply Unit	M. Bouslaugh / R. Pecnick / R. Griffith / G. Carney	<b>8. Finance/Administration Section:</b>			
Facilities Unit	N. Sablan / J. Finley	Chief	L. Wilson / D. Hulett / J. Tapia		
Ground Support Unit	D. Trussell / D. Corral / C. Christopherson	Time Unit	T. Reniff / A. Rivera		
Communications Unit	K. Kerwin / J. Carter (T)	Procurement Unit	J. Williams (T) / R. Leanos		
Medical Unit	K. Packwood / M. Vieraa / A. Hendrie	Comp/Claims Unit	J. Chastain		
Food Unit	R. Washington / M. Rivera	Cost Unit	E. Molina / B. Hughes		
Motel Unit	J. Tomsich				
<b>Prepared By:</b>	G. Funderburk / G. Garcia / J. Roberts (T)	<b>Position/Title:</b>	PSC	<b>Signature:</b>	
<b>ICS 203</b>		<b>Date/Time:</b>	7/25/2024	2300 hours	<b>NIMS IAP</b>

# FIRE WEATHER FORECAST

FORECAST NO. 21

NAME OF INCIDENT: Shelly

PREDICT ION FOR: Friday July 26, 2024

UNIT: Klamath National Forest \_\_\_\_

TIME AND DATE

FORECAST ISSUED: 1800 Thursday 7/25/24

SIGNED: David J Shallenberger

David Shallenberger IMET - (606) 481-9238

**WEATHER DISCUSSION:** The ridge will remain just off to the southeast through the period with the axis more to the east along the Sierra Nevadas. This will keep a southwest flow aloft into the northern California region for another day. The gradient remaining strong in the area will allow for another breezy day over the area with drying conditions continuing. This will be a less windy day than the previous 2 days. With a stronger push of cooler air, temperatures are expected to decrease a bit towards more seasonal values. Overnight relative humidity recoveries will continue to be poor.

## TODAY:

**WEATHER:** Mostly Sunny. Warm, dry, and breezy.

**MAXIMUM TEMPERATURE:** Highs ranging from the low 80s at 6000 feet to low 90s in the valleys.

**MINIMUM RELATIVE HUMIDITY:** 10-15% in valleys to 15-20% along ridges.

## 20 FOOT WINDS:

**SW of the PCT** – Up-slope winds of 3-6 mph mid to late morning becoming SW up-canyon 10-15 mph early afternoon with gusts of 18-22 mph mid to late afternoon and up to 25 to 28 mph along ridges. Sheltered valleys/drainages remain upcanyon around 10-15 mph.

**NE of the PCT** – Up-slope winds of 3-5 mph, becoming E to NE up-canyon 5-8 mph early afternoon. Then reversing to SW around 1300 as the general winds take over, increasing to 10-15 mph with gusts to 25 to 28 mph late afternoon through evening along ridges. Sheltered valleys/drainages remain upcanyon around 10-15 mph.

**STABILITY:** Valley inversions breaking 1000-1100, then unstable through the afternoon.

**CHANCE OF THUNDERSTORMS:** 0%

**TRANSPORT WIND:** SW 25-35 mph

---

## TONIGHT:

**WEATHER:** Clear.

**MINIMUM TEMPERATURE:** low to mid 60s along slopes & ridges and mid 50s in valleys.

**MAXIMUM RELATIVE HUMIDITY:** Around 25-30% slopes & ridges and 35-45% valleys.

**20 FOOT WINDS:** SW 12-16 mph, gusts to 20 mph, diminishing around 0200 then becoming 6-10 mph along ridges with downslope/down-valley 2-4 mph elsewhere.

**STABILITY:** Inversion sets in just after 2200.

**CHANCE OF THUNDERSTORMS:** 0%

**TRANSPORT WIND:** SW 5-10 mph

**OUTLOOK FOR SATURDAY THROUGH TUESDAY:** The low that has been moving up the CA coast will shift east and come ashore over central California. The low center should stay south of the incident area leading to cooler and less breezy but still dry conditions. Highs will be in the low to mid 80s on the slopes and ridges with highs in the valleys being in the low 90s. RH values will still be in the lower 20s in the valleys and upper 20s on the ridges and slopes. Winds will remain northwest with gusts in valleys to 14 to 18 mph and ridge tops around 24 to 26 mph. With the low passing to the south, this will lead to continued cooler conditions and better RH values through the weekend. Winds will decrease as well.

Please email weather obs to [david.shallenberger@noaa.gov](mailto:david.shallenberger@noaa.gov) or text them to 606-481-9238. Thanks!

## FIRE BEHAVIOR FORECAST

<b>FORECAST NUMBER:</b> 21	<b>TYPE OF FIRE:</b> Wildfire
<b>FIRE NAME:</b> Shelly	<b>OPERATIONAL PERIOD:</b> 07/26 to 07/27 07:00 to 07:00
<b>DATE ISSUED:</b> July 25, 2024	<b>TIME ISSUED:</b> 1800
<b>UNIT:</b> Klamath National Forest	<b>SIGNED:</b> /s/ Alexander Giery FBAN (t)

### WEATHER SUMMARY

- Low humidity from poor overnight recoveries to continue through operational period.
- Temperatures and winds to moderate over weekend.

*(See Fire Weather Forecast)*

**TOPOGRAPHY: Elevations:** 2,800'-7,400' Slopes: 0%-100+% (0°- 68°degrees)

### FIRE BEHAVIOR NARRATIVE

#### GENERAL:

**\*\*See attached updated Fuels and Fire Behavior Advisory\*\***

- Shelly fire is in Fuels and Fire Behavior Advisory Area (NC04) Northwestern Mtn.
- Probability of ignition will continue to remain high, in the 90 percent range, due to low relative humidity.
- Fire behavior will continue smolder and creep but could become active when in alignment with afternoon winds
- Fire behavior and smoke production may increase where heat exist with afternoon winds.
- Fuels outside the fire perimeter remain extremely dry and receptive to new ignitions.
- Rolling material may ignite receptive fuel bed below where they exist.

#### SPECIFIC:

**Branch X:** Isolated areas of scattered heat exist. These can continue to smolder until suppressed or consumed completely. Smoke may be visible in interior areas. The large island, between DIV A and DIV T in Branch XXX, in the Shelly Fork has areas of unburned fuel. These can continue to burn. This is not anticipated to challenge control lines.

**Branch XX:** The western side of Div F still holds areas of scattered heat along fires edge. This will continue to smolder and creep, potentially backing down toward the western fork of Patterson Creek. Roll out may ignite patches of fuel below underslung line.

**Branch XXX:** Fire continues to smolder and creep in sparse and separated fuels in interior areas. This will continue until fuels are extinguished or completely consumed. The large island between, DIV T and DIV A in Branch X, in the Shelly Fork has areas of unburned fuel. These can continue to burn. This is not anticipated to challenge control lines.

**Suppression Branch:** Fuels are very dry and extremely receptive to potential ignitions in areas of suppression repair outside the perimeter of the fire.

#### AIR OPERATIONS:

Sky/weather clear. Continued breezy SW winds  
Transport winds Southwest 25 to 35 MPH  
Sunset: 8:33pm, Sunrise: 6:02 am

#### SAFETY:

Post lookouts when working near unburned fuels in interior islands.  
Receptive unburned fuels may ignite with little warning and burn quickly.

# Fuels and Fire Behavior Advisory

## California Grass and Herbaceous-Dominated Ecosystems

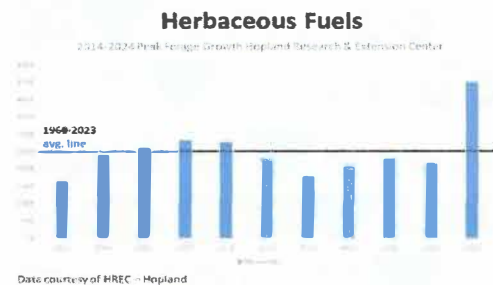
July 22, 2024



**Subject:** Herbaceous fuel loading is above to well above average across most of California's grass-dominated systems, including typically arid deserts and valleys that often do not support fire growth.

**Discussion:** Precipitation and temperature alignments throughout the winter and spring of 2024 have resulted in an above average load of herbaceous fuels across many grass-dominated systems throughout California. The above normal grass and herbaceous load creates a continuous fuel bed, allowing for rapid spread of fires when these fuels are cured. The continuous nature of the herbaceous fuel bed is enhanced by remnant thatch resulting from herbaceous growth during the abnormally wet late summer and fall of 2023 and multiple consecutive years of above average herbaceous growth.

**Difference from normal conditions:** Herbaceous fuel loadings in the California Coast Ranges, Sierra Foothills, and areas east of the Sierra Crest range from 120% to as much as 198% of normal. Below 3,000 ft. these fuels are nearly to fully cured. Curing and drying in the area of concern was enhanced during a recent heat wave and period of widespread humidity values in the teens to single digits and poor overnight humidity recovery.



### Concerns to Firefighters and the Public:

- Continuous and above normal fuel loading lowers the wind speed threshold needed to initiate rapid spread of fires during initial attack. Under what are typically low to moderate wind speeds, rates of spread and flame lengths are likely to exceed direct attack capabilities.
- Areas that typically resist fire spread, such as grazed areas, may not slow fire growth or reduce fire behavior as expected.
- Continuous fuels in arid and semi-arid ecosystem, such as deserts and high valleys, are likely to support continuous fire spread in areas typically considered non-burnable.
- Heavy and continuous cured herbaceous fuels may serve as a catalyst for fire spread into brush fuel types, even at fuel moisture levels that would otherwise make them resistant to rapid fire spread.

### Mitigation Measures:

- Brief all incoming resources about these conditions, especially out-of-area resources unfamiliar with local conditions.
- Consider augmentation of initial attack resources in areas of heavy herbaceous fuels.
- Fire behavior prediction simulations using fuel models GR1 and GR2 are likely to underpredict spread; modification to GR4 or GR7 may be needed to accurately model fire spread in herbaceous fuels.
- Modify tactics to account for increased fire line intensity and spotting.

### Area of Concern:

Across Central and Southern California, areas of concern focus on foothills, grasslands and deserts at or below 3,000 ft. in elevation. This includes portions of the following predictive services areas: NC02, NC03A, NC03B, NC04, NC05, NC07, and all South Ops PSA's.

Across the northeast portion of the state this includes hills, valleys, and deserts near and below 5,500 ft in elevation in parts of predictive services areas NC06 and NC08.

**Issued By:** Predictive Services Units from Northern California and Southern California, in coordination with Cal Fire and Cal OES Fire and Rescue Division.

# ASSIGNMENT LIST (ICS 204 WF)

CONTROLLED UNCLASSIFIED  
INFORMATION//BASIC

<b>1. Incident Name:</b>	<b>2. Operational Period:</b>	<b>3. Branch</b>	<b>Division</b>
<b>SHELLY</b>	Date From: 07/26/24    Date To: 07/27/24 Time From: 0700    Time To: 0700	<b>X</b>	<b>A</b>
<b>4. Operations Personnel:</b>		Page 1 of 1	Alpha

Operations Section Chief: **T. Thane / E. Schwab / C. Childers / M. Todd (T)**      Night Ops:

Branch Director: **S. Santos**      Branch Safety: **T. Quigley**

Division/Group Supervisor: **R. Riddle**      Air Attack: **I. Flattley / L. Murphy (T)**

5. Resources Assigned:	** Resources Below in Bold are 12 Hour **						
Resource Identifier	ALS	LWD	Leader	Personnel	Request #	Hours	Reporting Location
<b>CST1 SKU 9262G (CAL FIRE)</b>			<b>C. Cohen</b>	28	<b>C-20023</b>	<b>0700-1900</b>	<b>DP 22</b>
<b>CR2I BLM FOLSOM LAKE</b>		<b>7/28</b>	<b>R. Hooper</b>	20	<b>C-81</b>	<b>0700-1900</b>	<b>DP 22</b>
<b>FMOD PVT HOMELAND</b>		<b>8/2</b>	<b>J. Sansaver</b>	2	<b>O-46</b>	<b>0700-1900</b>	<b>DP 22</b>
<b>TFLD TBD</b>							<b>DP 22</b>
<b>TFLD(T) MILLER</b>		<b>8/1</b>	<b>J. Miller</b>	1	<b>O-513</b>	<b>0700-1900</b>	<b>DP 22</b>
<b>REMS 11</b>	<b>X</b>	<b>8/1</b>	<b>J. Reardon</b>	4	<b>O-20334</b>	<b>0700-1900</b>	<b>DP 22</b>
<b>AMBO 3 MTN MEDICS</b>	<b>X</b>	<b>8/1</b>	<b>S. Pello</b>	3	<b>E-210</b>	<b>0700-1900</b>	<b>DP 22</b>
<b>EMPF SCHOENBORN</b>	<b>X</b>	<b>8/7</b>	<b>M. Schoenborn</b>	1	<b>O-20168</b>	<b>0700-1900</b>	<b>DP 22</b>
<b>EMTF HAWK</b>		<b>8/7</b>	<b>C. Hawk</b>	1	<b>O-20164</b>	<b>0700-1900</b>	<b>DP 22</b>
<b>EMPF CORRAL</b>	<b>X</b>	<b>7/30</b>	<b>B. Corral</b>	1	<b>O-197</b>	<b>0700-1900</b>	<b>DP 22</b>
<b>EMPF DEJONG</b>	<b>X</b>	<b>7/30</b>	<b>C. Dejong</b>	1	<b>O-198</b>	<b>0700-1900</b>	<b>DP 22</b>

**6. Work Assignments:**

Fall trees that will threaten control lines.

Fall hazard trees.

Mop up 200 feet or as far to prevent escape.

Pull hose lays. Back haul garbage / hose / water. Patrol.

**7. Special Instructions:**

O-197, O-198 on spike out.

**8. Communications**

Name	Ch	Function	Rx Freq	Rx Tone	Tx Freq	Tx Tone	Mode	Notes
NIFC C12	4	COMMAND	173.0375	(T3) 131.8	167.3250	(T3) 131.8	A	Helispot 5 - All CMD repeaters linked
NIFC T1	6	TACTICAL	168.0500	(T3) 131.8	168.0500	(T3) 131.8	A	
A/G TAC	14	A/G TAC	168.3750	0.0	168.3750	0.0	A	
CALCORD	15	TACTICAL	156.0750	(T6) 156.7	156.0750	(T6) 156.7	A	
AIRGUARD	16	EMERGENCY	168.6250	0.0	168.6250	(T1) 110.9	A	

**9. Prepared by: Name:** B. Dameron / T. Lewis / M. Thomas  
J. Abasolo / B. Brown (T) / T. Hullquist (T)      RESL

Signature:

**ICS 204**      Date/Time: 7/25/2024 2200      Personnel Count: 62



# ASSIGNMENT LIST (ICS 204 WF)

CONTROLLED UNCLASSIFIED  
INFORMATION/BASIC

<b>1. Incident Name:</b>	<b>2. Operational Period:</b>	<b>3. Branch</b>	<b>Division</b>
<b>SHELLY</b>	Date From: 07/26/24    Date To: 07/27/24 Time From: 0700    Time To: 0700	<b>X</b>	<b>B/C</b>
<b>4. Operations Personnel:</b>		Page 1 of 2	Bravo/Charlie

Operations Section Chief: <b>T. Thane / E. Schwab / C. Childers / M. Todd (T)</b> Branch Director: <b>S. Santos</b> Division/Group Supervisor: <b>D. Havlina</b>	Night Ops: Branch Safety: <b>T. Quigley</b> Air Attack: <b>I. Flattley / L. Murphy (T)</b>
--	--

5. Resources Assigned:	** Resources Below in Bold are 12 Hour **							
Resource Identifier	ALS	LWD	Leader	Personnel	Request #	Hours	Reporting Location	
<b>CST1 SKU 9263G (CDCR)</b>			<b>J. Hoffmann</b>	36	<b>C-20040</b>	<b>0700-1900</b>	<b>DP7</b>	
<b>ENG6 NATIONAL FIRE</b>		<b>8/6</b>	<b>O. Arenas</b>	3	<b>E-153</b>	<b>0700-1900</b>	<b>DP7</b>	
<b>DOZ2 PVT BAR-G 1</b>		<b>7/26</b>	<b>O. Simions</b>	2	<b>E-85</b>	<b>0700-1900</b>	<b>DP7</b>	
<b>DOZ2 PVT EVANS BROTHERS</b>		<b>8/1</b>	<b>E. Patton</b>	2	<b>E-87</b>	<b>0700-1900</b>	<b>DP7</b>	
<b>DOZ2 PVT TYSON MORGAN</b>		<b>8/3</b>	<b>T. Morgan</b>	2	<b>E-215</b>	<b>0700-1900</b>	<b>DP7</b>	
<b>DOZ2 PVT E-20075</b>		<b>7/28</b>	<b>K. Easley</b>	2	<b>E-20075</b>	<b>0700-1900</b>	<b>DP7</b>	
<b>WTS2 JOHN SEMPLE 3</b>		<b>8/4</b>	<b>J. Goldie</b>	2	<b>E-89</b>	<b>0700-1900</b>	<b>DP7</b>	
<b>WTS2 JOHN SEMPLE 2</b>		<b>8/4</b>	<b>B. Schmidt</b>	1	<b>E-88</b>	<b>0700-1900</b>	<b>DP7</b>	
<b>WTS2 KENT JOHNSON</b>		<b>8/4</b>	<b>R. Brown</b>	1	<b>E-92</b>	<b>0700-1900</b>	<b>DP7</b>	
<b>WTS1 PVT E-20193</b>		<b>7/28</b>	<b>L. Lear</b>	2	<b>E-20193</b>	<b>0700-1900</b>	<b>DP7</b>	
<b>WTS1 PVT E-20196</b>		<b>7/28</b>	<b>J. Camacho</b>	2	<b>E-20196</b>	<b>0700-1900</b>	<b>DP7</b>	
<b>WTS1 PVT E-20243</b>		<b>7/29</b>	<b>N. Cusalich</b>	2	<b>E-20243</b>	<b>0700-1900</b>	<b>DP7</b>	
<b>WTS1 PVT E-20308</b>		<b>7/31</b>	<b>M. Hilton</b>	2	<b>E-20308</b>	<b>0700-1900</b>	<b>DP7</b>	
<b>WTS2 PVT E-20318</b>		<b>8/1</b>	<b>C. Jenkins</b>	2	<b>E-20318</b>	<b>0700-1900</b>	<b>DP7</b>	
<b>WTS1 PVT E-20320</b>		<b>8/1</b>	<b>M. Hamilton</b>	2	<b>E-20320</b>	<b>0700-1900</b>	<b>DP7</b>	
<b>WTS2 PVT E-20321</b>		<b>8/1</b>	<b>P. Seaber</b>	2	<b>E-20321</b>	<b>0700-1900</b>	<b>DP7</b>	
<b>FMOD PVT RED FLAG 2</b>		<b>8/6</b>	<b>A. Fullerton</b>	2	<b>O-186</b>	<b>0700-1900</b>	<b>DP7</b>	
<b>EXC PVT E-20236</b>		<b>7/29</b>	<b>J. Wright</b>	1	<b>E-20236</b>	<b>0700-1900</b>	<b>DP7</b>	

**6. Work Assignments:**  
 Back haul garbage / hose / water  
 Identify and document fire suppression repair needs.  
 Implement fire suppression repair plan.  
 Back haul trash and excess supplies.

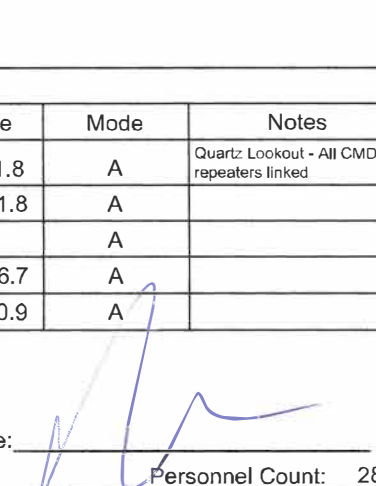
**7. Special Instructions:**

8. Communications								
Name	Ch	Function	Rx Freq	Rx Tone	Tx Freq	Tx Tone	Mode	Notes
NIFC C10	2	COMMAND	170.4125	(T3) 131.8	165.9625	(T3) 131.8	A	Quartz Lookout - All CMD repeaters linked
NIFC T1	6	TACTICAL	168.0500	(T3) 131.8	168.0500	(T3) 131.8	A	
A/G TAC	14	A/G TAC	168.3750	0.0	168.3750	0.0	A	
CALCORD	15	TACTICAL	156.0750	(T6) 156.7	156.0750	(T6) 156.7	A	
AIRGUARD	16	EMERGENCY	168.6250	0.0	168.6250	(T1) 110.9	A	

<b>9. Prepared by: Name:</b>	B. Dameron / T. Lewis / M. Thomas J. Abasolo / B. Brown (T) / T. Hullquist (T)	RESL	Signature:
<b>ICS 204</b>	Date/Time: 7/25/2024 2200	Personnel Count: 68	

# ASSIGNMENT LIST (ICS 204 WF)

CONTROLLED UNCLASSIFIED  
INFORMATION/BASIC

<b>1. Incident Name:</b> <b>SHELLY</b>		<b>2. Operational Period:</b> Date From: 07/26/24    Date To: 07/27/24 Time From: 0700    Time To: 0700				<b>3. Branch</b> <b>Division</b> <b>X</b> <b>B/C</b>		
						Page 2 of 2    Bravo/Charlie		
<b>4. Operations Personnel:</b> Operations Section Chief: <b>T. Thane / E. Schwab / C. Childers / M. Todd (T)</b> Branch Director: <b>S. Santos</b> Division/Group Supervisor: <b>D. Havlina</b>				Night Ops: Branch Safety: <b>T. Quigley</b> Air Attack: <b>I. Flattley / L. Murphy (T)</b>				
<b>5. Resources Assigned:</b>		<b>** Resources Below in Bold are 12 Hour **</b>						
Resource Identifier	ALS	LWD	Leader	Personnel	Request #	Hours	Reporting Location	
EXC4 PVT E-20263		7/30	<b>C. Walkup</b>	1	E-20263	0700-1900	DP 7	
EXC2 PVT E-20385		8/8	<b>B. Fulner</b>	2	E-20385	0700-1900	DP 7	
EXC2 PVT E-20400		8/9	<b>M. Craig</b>	1	E-20400	0700-1900	DP 7	
EXC2 PVT E-20387		8/8	<b>W. Dunlap</b>	2	E-20387	0700-1900	DP 7	
CHP2 PVT NORTH ZONE 2		8/7	<b>G. Inghram</b>	3	E-57	0700-1900	DP 7	
CHP2 PVT GOD & COUNTRY		7/28	<b>A. Knott</b>	3	E-390	0700-1900	DP 7	
TFLD NESS JR		7/29	<b>R. Ness Jr</b>	1	O-234	0700-1900	DP 7	
TFLD(T) PADILLA		8/2	<b>D. Padilla</b>	1	O-507	0700-1900	DP 7	
TFLD(T) CARROLL		7/27	<b>B. Carroll</b>	1	O-401	0700-1900	DP 7	
HEQB WILSON		7/31	<b>B. Wilson</b>	1	O-297	0700-1900	DP 7	
HEQB(T) SPENCER		7/26	<b>H. Spencer</b>	1	O-379	0700-1900	DP 7	
HEQB(T) DOYLE		8/3	<b>R. Doyle</b>	1	O-533	0700-1900	DP 7	
REMS 1	X	7/26	<b>A. Walker</b>	4	O-54	0700-1900	DP 7	
AMBO 20	X	8/6	<b>Johansen</b>	2	E-20221	0700-1900	DP 7	
EMPF SELLERS	X	7/31	<b>P. Sellers</b>	1	O-268	0700-1900	DP 7	
EMTF(T) WAGNER		7/29	<b>A. Wagner</b>	1	O-520	0700-1900	DP 7	
REAF FRALEY		8/6	<b>D. Fraley</b>	1	O-568	0700-1900	DP 7	
ARCH JORGENSEN		7/27	<b>J. Jorgensen</b>	1	O-411	0700-1900	DP 7	
<b>6. Work Assignments:</b>								
Coordinate with READs to repair handlines and dozer lines. Identify and document fire suppression repair needs. Implement fire suppression repair plan. Back haul trash and excess supplies.								
<b>7. Special Instructions:</b>								
<b>8. Communications</b>								
Name	Ch	Function	Rx Freq	Rx Tone	Tx Freq	Tx Tone	Mode	Notes
NIFC C10	2	COMMAND	170.4125	(T3) 131.8	165.9625	(T3) 131.8	A	Quartz: Lookout - All CMD repeaters linked
NIFC T1	6	TACTICAL	168.0500	(T3) 131.8	168.0500	(T3) 131.8	A	
A/G TAC	14	A/G TAC	168.3750	0.0	168.3750	0.0	A	
CALCORD	15	TACTICAL	156.0750	(T6) 156.7	156.0750	(T6) 156.7	A	
AIRGUARD	16	EMERGENCY	168.6250	0.0	168.6250	(T1) 110.9	A	
<b>9. Prepared by: Name:</b>			B. Dameron / T. Lewis / M. Thomas J. Abasolo / B. Brown (T) / T. Hullquist (T)		RESL			Signature: 
<b>ICS 204</b>		Date/Time: 7/25/2024		2200		Personnel Count: 28		











# ASSIGNMENT LIST (ICS 204 WF)

CONTROLLED UNCLASSIFIED  
INFORMATION//BASIC

<b>1. Incident Name:</b>	<b>2. Operational Period:</b>	<b>3. Branch</b>	<b>Division</b>
<b>SHELLY</b>	Date From: 07/26/24      Date To: 07/27/24 Time From: 0700              Time To: 0700	<b>FSR</b>	<b>FSR North</b>
<b>4. Operations Personnel:</b>		Page 1 of 2	

Operations Section Chief: <b>T. Thane / E. Schwab / C. Childers / M. Todd (T)</b>	Night Ops:
Branch Director: <b>S. Pindell / S. Wilson (Dep.)</b>	Branch Safety: <b>J. Barhart</b>
Division/Group Supervisor: <b>J. Karp</b>	Air Attack: <b>I. Flattley / L. Murphy (T)</b>

5. Resources Assigned:		** Resources Below in Bold are 12 Hour **					
Resource Identifier	ALS	LWD	Leader	Personnel	Request #	Hours	Reporting Location
CRW2 PVT C-20034		7/29	<b>C. Rodriguez</b>	20	<b>C-20034</b>	0700-1900	DP 9
CRW2 PVT C-20035		8/2	<b>F. Cisnero</b>	20	<b>C-20035</b>	0700-1900	DP 9
CRW2 PVT C-20038		7/27	<b>A. Ramirez</b>	20	<b>C-20038</b>	0700-1900	DP 9
CRW2 PVT C-20039		7/26	<b>A. Carstens</b>	20	<b>C-20039</b>	0700-1900	DP 9
ENG3 SABINO		7/30	<b>A. Beeley</b>	3	<b>E-114</b>	0700-1900	DP 9
DOZ2 PVT D&C LOGGING		7/29	<b>D. Smiley</b>	2	<b>E-81</b>	0700-1900	DP 9
DOZ2 PVT E-20080		7/28	<b>M. Henson</b>	2	<b>E-20080</b>	0700-1900	DP 9
WTS1 PVT E-20047			<b>H. Hanna</b>	2	<b>E-20047</b>	0700-1900	DP 9
WTS1 PVT E-20050		7/27	<b>A. Bennett</b>	2	<b>E-20050</b>	0700-1900	DP 9
WTS1 PVT E-20240		7/29	<b>W. Reali</b>	1	<b>E-20240</b>	0700-1900	DP 9
WTS1 PVT E-20242		7/29	<b>V. Reali</b>	2	<b>E-20242</b>	0700-1900	DP 9
WTS2 PVT E-20248		7/30	<b>T. Hyberg</b>	2	<b>E-20248</b>	0700-1900	DP 9
WTS1 PVT E-20319		8/1	<b>D. Harner</b>	2	<b>E-20319</b>	0700-1900	DP 9
FMOD PVT GOD & COUNTRY 1		8/6	<b>T. Barney</b>	2	<b>O-162</b>	0700-1900	DP 9
FMOD PVT O-20222		7/30	<b>N. Crawford</b>	2	<b>O-20222</b>	0700-1900	DP 9
MAST PVT JIM JOHNSON		8/6	<b>J. Downing</b>	3	<b>E-289</b>	0700-1900	DP 9
GRD2 PVT E-20275		7/30	<b>J. Simonis</b>	1	<b>E-20275</b>	0700-1900	DP 9
EXC PVT E-20260		7/30	<b>J. Hudman</b>	1	<b>E-20260</b>	0700-1900	DP 9

**6. Work Assignments:**  
 Identify and document fire suppression repair needs.  
 Implement fire suppression repair plan.  
 Backhaul all excess hose, appliances, and trash.

**7. Special Instructions:**

8. Communications								
Name	Ch	Function	Rx Freq	Rx Tone	Tx Freq	Tx Tone	Mode	Notes
NIFC C11	3	COMMAND	170.6875	(T3) 131.8	166.5750	(T3) 131.8	A	Whiskey Butte - All CMD repeaters linked
VTAC 12	12	TACTICAL	154.4525	(T6) 156.7	154.4525	(T6) 156.7	A	
A/G TAC	14	A/G TAC	168.3750	0.0	168.3750	0.0	A	
CALCORD	15	TACTICAL	156.0750	(T6) 156.7	156.0750	(T6) 156.7	A	
AIRGUARD	16	EMERGENCY	168.6250	0.0	168.6250	(T1) 110.9	A	

<b>9. Prepared by: Name:</b>	B. Dameron / T. Lewis / M. Thomas J. Abasolo / B. Brown (T) / T. Hullquist (T)	RESL	Signature:
<b>ICS 204</b>	Date/Time: 7/25/2024 2200	Personnel Count: 107	



# ASSIGNMENT LIST (ICS 204 WF)

CONTROLLED UNCLASSIFIED  
INFORMATION//BASIC

<b>1. Incident Name:</b> <p style="text-align: center; font-size: 1.2em;">SHELLY</p>	<b>2. Operational Period:</b> Date From: 07/26/24    Date To: 07/27/24 Time From: 0700    Time To: 0700	<b>3. Branch</b> <b>Division</b> <p style="text-align: center; font-size: 1.2em;">FSR    FSR North</p>
---	---	---

<b>4. Operations Personnel:</b>		Page 2 of 2
Operations Section Chief: <b>T. Thane / E. Schwab / C. Childers / M. Todd (T)</b>	Night Ops:	
Branch Director: <b>S. Pindell / S. Wilson (Dep.)</b>	Branch Safety: <b>J. Barhart</b>	
Division/Group Supervisor: <b>J. Karp</b>	Air Attack: <b>I. Flattley / L. Murphy (T)</b>	

5. Resources Assigned:	** Resources Below in Bold are 12 Hour **							
Resource Identifier	ALS	LWD	Leader	Personnel	Request #	Hours	Reporting Location	
EXC4 PVT E-20262			<b>C. Farrell</b>	1	<b>E-20262</b>	0700-1900	DP 9	
EXC2 PVT E-20383		8/4	<b>M. Johnson</b>	1	<b>E-20383</b>	0700-1900	DP 9	
EXC2 PVT E-20398			<b>D. Anderews</b>	1	<b>E-20398</b>	0700-1900	DP 9	
EXC2 PVT E-20401			<b>T. Waterman</b>	1	<b>E-20401</b>	0700-1900	DP 9	
LOADER PVT E-20396		8/10	<b>R. Smith</b>	1	<b>E-20396</b>	0700-1900	DP 9	
CHP1 PVT GE FORESTRY		7/28	<b>E. Rangel</b>	4	<b>E-389</b>	0700-1900	DP 9	
CHP2 PVT E-20294			<b>D. Lange</b>	2	<b>E-20294</b>	0700-1900	DP 9	
CHP2 PVT E-20296		7/30	<b>A. Larios</b>	2	<b>E-20296</b>	0700-1900	DP 9	
CHP1 PVT E-20426					<b>E-20426</b>	0700-1900	DP 9	
HEQB BETTS			<b>B. Betts</b>	1	<b>O-20143</b>	0700-1900	DP 9	
HEQB(T) SMITH		7/26	<b>B. Smith</b>	1	<b>O-380</b>	0700-1900	DP 9	
FOBS(T) RAVENSCROFT		7/29	<b>J. Ravenscroft</b>	1	<b>O-20160</b>	0700-1900	DP 9	
FSRS COONEN		8/7	<b>N. Coonen</b>	1	<b>O-20384</b>	0700-1900	DP 9	
EMPF BLIVEN	X	8/5	<b>D. Bliven</b>	1	<b>O-524</b>	0700-1900	DP 9	
EMTF CARNEY		8/5	<b>S. Carney</b>	1	<b>O-521</b>	0700-1900	DP 9	

**6. Work Assignments:**  
 Identify and document fire suppression repair needs.  
 Implement fire suppression repair plan.  
 Backhaul all excess hose, appliances, and trash.

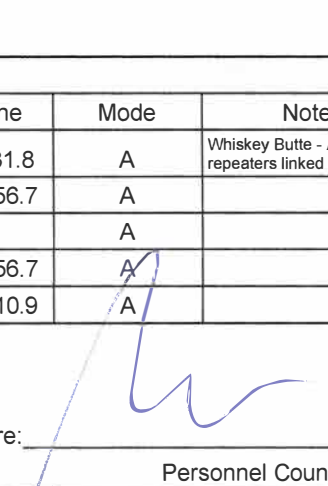
**7. Special Instructions:**

8. Communications								
Name	Ch	Function	Rx Freq	Rx Tone	Tx Freq	Tx Tone	Mode	Notes
NIFC C11	3	COMMAND	170.6875	(T3) 131.8	166.5750	(T3) 131.8	A	Whiskey Butte - All CMD repeaters linked
VTAC 12	12	TACTICAL	154.4525	(T6) 156.7	154.4525	(T6) 156.7	A	
A/G TAC	14	A/G TAC	168.3750	0.0	168.3750	0.0	A	
CALCORD	15	TACTICAL	156.0750	(T6) 156.7	156.0750	(T6) 156.7	A	
AIRGUARD	16	EMERGENCY	168.6250	0.0	168.6250	(T1) 110.9	A	

<b>9. Prepared by: Name:</b>	B. Dameron / T. Lewis / M. Thomas J. Abasolo / B. Brown (T) / T. Hullquist (T)	RESL	Signature:
<b>ICS 204</b>	Date/Time: 7/25/2024	2200	Personnel Count: 19

# ASSIGNMENT LIST (ICS 204 WF)

CONTROLLED UNCLASSIFIED  
INFORMATION//BASIC

<b>1. Incident Name:</b>			<b>2. Operational Period:</b>				<b>3. Branch</b>		<b>Division</b>	
<b>SHELLY</b>			Date From: 07/26/24		Date To: 07/27/24		<b>FSR</b>		<b>FSR South</b>	
			Time From: 0700		Time To: 0700					
<b>4. Operations Personnel:</b>							Page 1 of 2			
Operations Section Chief: <b>T. Thane / E. Schwab / C. Childers / M. Todd (T)</b>					Night Ops:					
Branch Director: <b>S. Pindell / S. Wilson (Dep.)</b>					Branch Safety: <b>J. Barhart</b>					
Division/Group Supervisor: <b>J. Wildt (T)</b>					Air Attack: <b>I. Flattley / L. Murphy (T)</b>					
<b>5. Resources Assigned:</b>			<b>** Resources Below in Bold are 12 Hour **</b>							
Resource Identifier	ALS	LWD	Leader	Personnel	Request #	Hours	Reporting Location			
CRW2 PACIFIC OASIS 1		7/28	<b>J. Sprigs</b>	20	<b>C-77</b>	0700-1900	DP 6			
CRW2 PACIFIC OASIS 190		7/28	<b>J. Maza</b>	20	<b>C-78</b>	0700-1900	DP 6			
ENG6 MES 6217		7/27	<b>S. Nichols</b>	4	<b>E-150</b>	0700-1900	DP 6			
DOZ2 PVT E-20031		8/1	<b>T. Zimmerman</b>	1	<b>E-20031</b>	0700-1900	DP 6			
DOZ2 PVT E-20061		7/29	<b>R. Carlton</b>	2	<b>E-20061</b>	0700-1900	DP 6			
DOZ2 PVT E-20110		7/28	<b>M. Gooden</b>		<b>E-20110</b>	0700-1900	DP 6			
WTS2 WHITE		8/6	<b>R. Goures</b>	2	<b>E-48</b>	0700-1900	DP 6			
WTS1 PVT E-20088		7/28	<b>D. Keef</b>	2	<b>E-20088</b>	0700-1900	DP 6			
WTS1 PVT E-20192		7/28	<b>S. Scheeps</b>	2	<b>E-20192</b>	0700-1900	DP 6			
WTS1 PVT E-20194		7/28	<b>S. Clark</b>	2	<b>E-20194</b>	0700-1900	DP 6			
WTS1 PVT E-20198		7/28	<b>H. Sprulock</b>	2	<b>E-20198</b>	0700-1900	DP 6			
WTS1 PVT E-20199		7/28	<b>B. Mong</b>	2	<b>E-20199</b>	0700-1900	DP 6			
FMOD PVT O-20221		8/7	<b>G. Burg</b>	2	<b>O-20221</b>	0700-1900	DP 6			
MAST PVT SMOKEY MTN		7/31	<b>T. Hill</b>	2	<b>E-59</b>	0700-1900	DP 6			
GRD2 PVT E-20273			<b>J. White</b>	1	<b>E-20273</b>	0700-1900	DP 6			
SKID PVT E-20409		8/10	<b>C. Schroeder</b>	2	<b>E-20409</b>	0700-1900	DP 6			
EXC1 PVT AXSUS ENTERPRISES		8/2	<b>R. Schroeder</b>	2	<b>E-436</b>	0700-1900	DP 6			
EXC1 PVT FIGAS E-454		8/3	<b>B. Figas</b>	1	<b>E-454</b>	0700-1900	DP 6			
<b>6. Work Assignments:</b>										
Identify and document fire suppression repair needs.										
Implement fire suppression repair plan.										
Back haul all excess hose, appliances, and trash.										
<b>7. Special Instructions:</b>										
<b>8. Communications</b>										
Name	Ch	Function	Rx Freq	Rx Tone	Tx Freq	Tx Tone	Mode	Notes		
NIFC C11	3	COMMAND	170.6875	(T3) 131.8	166.5750	(T3) 131.8	A	Whiskey Butte - All CMD repeaters linked		
VTAC 12	12	TACTICAL	154.4525	(T6) 156.7	154.4525	(T6) 156.7	A			
A/G TAC	14	A/G TAC	168.3750	0.0	168.3750	0.0	A			
CALCORD	15	TACTICAL	156.0750	(T6) 156.7	156.0750	(T6) 156.7	A			
AIRGUARD	16	EMERGENCY	168.6250	0.0	168.6250	(T1) 110.9	A			
<b>9. Prepared by: Name:</b>			B. Dameron / T. Lewis / M. Thomas J. Abasolo / B. Brown (T) / T. Hullquist (T)			RESL		Signature: 		
<b>ICS 204</b>		Date/Time: 7/25/2024		2200		Personnel Count: 69				

NIMS IAP

CONTROLLED UNCLASSIFIED INFORMATION//BASIC

# ASSIGNMENT LIST (ICS 204 WF)

CONTROLLED UNCLASSIFIED  
INFORMATION//BASIC

<b>1. Incident Name:</b>	<b>2. Operational Period:</b>	<b>3. Branch</b>	<b>Division</b>
<b>SHELLY</b>	Date From: 07/26/24    Date To: 07/27/24 Time From: 0700    Time To: 0700	<b>FSR</b>	<b>FSR South</b>

**4. Operations Personnel:** Page 2 of 2

Operations Section Chief: <b>T. Thane / E. Schwab / C. Childers / M. Todd (T)</b>	Night Ops:
Branch Director: <b>S. Pindell / S. Wilson (Dep.)</b>	Branch Safety: <b>J. Barhart</b>
Division/Group Supervisor: <b>J. Wildt (T)</b>	Air Attack: <b>I. Flattley / L. Murphy (T)</b>

5. Resources Assigned:	** Resources Below in Bold are 12 Hour **						
Resource Identifier	ALS	LWD	Leader	Personnel	Request #	Hours	Reporting Location
EXC2 PVT E-20276		7/30	<b>D. Stoddard</b>	2	<b>E-20276</b>	0700-1900	DP 6
EXC2 PVT E-20277		7/30	<b>S. Clark</b>	1	<b>E-20277</b>	0700-1900	DP 6
TUBG PVT AXSUS ENTERPRISES		8/2	<b>L. Lister</b>	2	<b>E-435</b>	0700-1900	DP 6
CHP1 PVT FIGAS E-453		8/3	<b>B. Figas</b>	1	<b>E-453</b>	0700-1900	DP 6
CHP1 PVT E-20330		8/1	<b>B. Figas</b>	2	<b>E-20330</b>	0700-1900	DP 6
CHP1 PVT E-20380		8/7	<b>H. Harnin</b>	1	<b>E-20380</b>	0700-1900	DP 6
CHP2 PVT E-20295			<b>C. Haptonstall</b>	2	<b>E-20295</b>	0700-1900	DP 6
HEQB DWYER		8/5	<b>W. Dwyer</b>	1	<b>O-20352</b>	0700-1900	DP 6
HEQB(T) KINDNESS		7/31	<b>A. Kindness</b>	1	<b>O-317</b>	0700-1900	DP 6
HEQB(T) MCCONNEL		8/5	<b>B. Mcconnel</b>	1	<b>O-20354</b>	0700-1900	DP 6
HEQB(T) DEXHEIMER		7/31	<b>F. Dexheimer</b>	1	<b>O-496</b>	0700-1900	DP 6
THSP YARUSSO		8/3	<b>A. Yarusso</b>	1	<b>O-20287</b>	0700-1900	DP 6
FSRS DENMAN		7/29	<b>D. Denman</b>	1	<b>O-20206</b>	0700-1900	DP 6
FSRS POBURKO		8/9	<b>J. Poburko</b>	1	<b>O-20406</b>	0700-1900	DP 6
EMPF PONCE	X	8/5	<b>G. Ponce</b>	1	<b>O-523</b>	0700-1900	DP 6
EMPF LLAMAS	X	8/5	<b>R. Llamas</b>	1	<b>O-526</b>	0700-1900	DP 6

**6. Work Assignments:**  
 Identify and document fire suppression repair needs.  
 Implement fire suppression repair plan.  
 Back haul all excess hose, appliances, and trash.

**7. Special Instructions:**

**8. Communications**

Name	Ch	Function	Rx Freq	Rx Tone	Tx Freq	Tx Tone	Mode	Notes
NIFC C11	3	COMMAND	170.6875	(T3) 131.8	166.5750	(T3) 131.8	A	Whiskey Butte - All CMD repeaters linked
VTAC 12	12	TACTICAL	154.4525	(T6) 156.7	154.4525	(T6) 156.7	A	
A/G TAC	14	A/G TAC	168.3750	0.0	168.3750	0.0	A	
CALCORD	15	TACTICAL	156.0750	(T6) 156.7	156.0750	(T6) 156.7	A	
AIRGUARD	16	EMERGENCY	168.6250	0.0	168.6250	(T1) 110.9	A	

**9. Prepared by: Name:** B. Dameron / T. Lewis / M. Thomas  
 J. Abasolo / B. Brown (T) / T. Hullquist (T) RESL

Signature:

**ICS 204** Date/Time: 7/25/2024 2200 Personnel Count: 20

AIR OPERATIONS SUMMARY ICS-220						Time Prepared 1600	Date Prepared 7/25/2024	Prepared By <i>Cole Wallace</i>					
Incident Name / Number SHELLY		Sunrise 0600	Sunset 2035	Airport A30	Pumpkin 2030	Shutdown 2030	Operational Period - Date 7/26/2024			Operational Period - Time 0800-2030			
<b>General Remarks, Safety Notes, Hazards, Air Operations Special Equipment, etc.</b> *All Aircraft orders go to Scott Valley Helibase, all drops will be tracked and recorded. *Be aware of retardant avoidance areas, 300ft away from waterways and bodies of water. *Sanitize Buckets before changing water sources. Aviation daily cost to: Scottvalley2023@gmail.com *All GPS is to be collected in DD° MM.MMM'  <i>Remember: Tree canopy, vegetation, and smoke can limit pilots' ability to locate firefighters near the drop zone. Ensure that the drop zone is clear prior to the water/retardant drop! Always maintain situational awareness for snags, limbs, and loose rocks that might become displaced from the drop.</i>						<b>Helibase Information</b> <b>Scott Valley Helibase A30</b> 41 33.395 N 122 51.208 W 530-468-1294 <b>Siskiyou Helibase SIY</b> 41 46.530 N 122 28.330 W 530-520-6479		<b>TFR Information</b> 4/7480 Day 4/7479 Night Altitude 11,000 MSL 41 29.4079 123 01.9938 TFR Frequency 120.525			<b>Medivac Ship Information</b>  <b>24hr Hoist</b> Call Sign- G823 Aircraft Model- Army UH60L Location-Benton Field 085  <b>Request Procedure for This Aircraft:</b>		
Incident Frequencies	RX	Tone	TX	Tone	AM/FM	Position	Name	Phone	Location/Equipment				
TFR Victor	120.5250		120.5250		AM	AOBD	Tom Swanson	805-903-3495	IMT6				
Rotor Victor	132.5750		132.5750		AM	AOBD	Rocco Terracciano	951-204-8461	IMT1				
Briefing Victor	125.1250		125.1250		AM	AOBD- T	Cole Wallace	530-551-1311	IMT1				
AirTactics	164.7750		164.7750		FM	ASGS-T	Kevin Christy	310-422-3832	IMT1				
A/G CMD	166.6000		166.6000		FM	HEBM-SVHB	Lee Stewart @ SVHB	775-220-6364	Scott Valley Airport				
A/G TAC	168.3750		168.3750		FM								
TOLC	169.2000		169.2000		FM								
DECK	163.1000		163.1000		FM								
AIR GUARD	168.6250		168.6250	110.9	FM	ATBM	Matt Libby	530-643-9887	SIY Tanker Base				
CALCORD	156.0750	156.7	156.0750	156.7	FM								
Montigue Airport	123.0000					UR-31	Jake Burgess	530-598-2611					
Scott Valley CTAF/Unicom	122.8000				AM	UF11	Liz Younger	530-945-0166					
National Flight Following	168.6500	110.9	168.6500	110.9	FM	G823	James Beeson	510-755-8571	Benton Field 085				
							Yreka Dispatch Aircraft Desk	530-842-7066					
HELICOPTERS - Scott Valley Helibase						HELICOPTERS - SIY Airport							
FAA #	TYPE	Make/Model	Helibase	Start	Avail	Remarks	FAA #	TYPE	Make/Model	Airport	Start	Avail	Remarks
							N181EH	3	AS350B3E	SIY	0800	0830	Recon
(H502) N353JR	3	AS350B3E	SVHB	0800	0830	Recon, Buckets, PSD, IA							
(H532) N216GH	2	Bell 205A++	SVHB	0800	0830	Buckets, Troop transport, Recon							
N40HX	1	Kmax	SVHB	0800	0830	Buckets, Cargo							
N75TH	1	Kmax	SVHB	0800	0830	Buckets, Cargo							
FIXED WING AA/HLCO						Hoist/Medivac Information							
FAA #	Call Sign	Make/Model	Base	Start	Avail	Remarks	FAA #	TYPE	Make/Model	Airport	Start	Stop	Remarks
When 3 or more aircraft, request airattck through Communications.							G823	1	UH60L	85	24hr	24hr	ALS/NVG/Hoist-265ft Cable
							H14/H16	3	ASB350B3E	Redding	0600	0230	ALS/NVG/Hoist 165ft Cable
							N353SH	3	AS350B3E	Willow Cr	0800	2030	Short Haul (assigned to Hill)
							USCG	1	UH60	Mckinlewilg	24hr	24hr	HUU Fortuna ECC 707-726-1280

**Incident: Shelly Fire**  
**CA-KNF-005159**

**Date:**  
**July 26<sup>th</sup> to July 27<sup>th</sup> 2024**

**Operational Period:**  
**0700-0700 Hours**



## ***SAFETY MESSAGE***



*Fire fighter safety comes first on every fire, every time.*

### **NEAR MISSES:**

How many times have you come close to an accident, shrugged it off as a “near-miss” and gone on your way without giving it another thought?

Near-misses are warnings of accidents in the making. If we accept the warnings and look for the causes, we may be able to prevent similar situations from developing.

By sharing “near-miss” incidents to leadership and safety officers corrective actions can be implemented.

Let’s treat “near-misses” the same as bad accidents and weed out the causes while we have the opportunity.

### **Remember: Don’t Disregard Warnings!!**

#### **“RISK VS GAIN”**

- Avoid “over-committing” by going too far interior.
- Look out for snags when working around areas with burned trees.
- Evaluate all damaged trees with large limbs before working under them.
- Be aware of steep terrain and loose footings.
- Changing weather conditions could catch you off guard, check forecasts.

#### **SUPPRESSION REPAIR**

- Communicate clearly with operators of heavy equipment and equipment supervisors.
- Maintain safe working distances.
- Watch footing and vehicle use around rocks.
- Avoid working below equipment and watch out for rolling materials.
- Maintain accountability of personnel.
- Make eye contact with operators before approaching heavy equipment.
- In FSR South, heavy equipment is abundant, use caution.

**Safety Officers: Nickey, Mott**

<b>INCIDENT RADIO COMMUNICATIONS PLAN (ICS 205)</b>	Incident Name	Date/Time Prepared	Operational Period Date/Time
	<b>SHELLY SH717 Z2</b>	<b>7/25/2024 1400</b>	<b>7/26/2024 to 7/27/2024 0700 to 0700</b>

**CONTROLLED CLASSIFIED INFORMATION/BASIC**

**Utilization of any frequency other than those listed on this form are prohibited, subject to fines by the FCC and demobilization from the incident.**

Zn Ch	Function	Channel Name/Trunked Radio System Talkgroup	Assignment	RX Freq N or W	RX Tone/NAC	TX Freq N or W	Tx Tone/NAC	Dev	Pwr	Mode A, D or M	Remarks
1	<b>COMMAND</b>	<b>NIFC C3</b>	<b>ALL DIVISIONS</b>	170.4250	Tone 3 131.8	168.0750	Tone 3 131.8	N	H	A	ENGLISH PEAK - ALL CMD REPEATERS LINKED
2	<b>COMMAND</b>	<b>NIFC C10</b>	<b>ALL DIVISIONS</b>	170.4125	Tone 3 131.8	165.9625	Tone 3 131.8	N	H	A	QUARTZ LOOKOUT - ALL CMD REPEATERS LINKED
3	<b>COMMAND</b>	<b>NIFC C11</b>	<b>ALL DIVISIONS</b>	170.6875	Tone 3 131.8	166.5750	Tone 3 131.8	N	H	A	WHISKEY BUTTE - ALL CMD REPEATERS LINKED
4	<b>COMMAND</b>	<b>NIFC C12</b>	<b>ALL DIVISIONS</b>	173.0375	Tone 3 131.8	167.3250	Tone 3 131.8	N	H	A	HELISPOT 5 - ALL CMD REPEATERS LINKED
5	<b>COMMAND</b>	<b>NIFC C20</b>	<b>ALL DIVISIONS</b>	172.5500	Tone 3 131.8	162.1875	Tone 3 131.8	N	H	A	BOULDER PEAK - ALL CMD REPEATERS LINKED
6	<b>TACTICAL</b>	<b>NIFC T1</b>	<b>DIV B/C</b>	168.0500	Tone 3 131.8	168.0500	Tone 3 131.8	N	H	A	
7	<b>TACTICAL</b>	<b>NIFC T2</b>	<b>DIV D/E</b>	168.2000	Tone 3 131.8	168.2000	Tone 3 131.8	N	H	A	
8	<b>TACTICAL</b>	<b>NIFC T3</b>	<b>DIV F/G/M</b>	168.6000	Tone 3 131.8	168.6000	Tone 3 131.8	N	H	A	
9	<b>TACTICAL</b>	<b>NIFC T4</b>	<b>DIV A, DIV T</b>	166.7250	Tone 3 131.8	166.7250	Tone 3 131.8	N	H	A	
10	<b>TACTICAL</b>	<b>NIFC T5</b>	<b>ROADS GROUP</b>	166.7750	Tone 3 131.8	166.7750	Tone 3 131.8	N	H	A	TRAFFIC CONTROL
11	<b>TACTICAL</b>	<b>NIFC T6</b>	<b>FSR 1</b>	168.2500	Tone 3 131.8	168.2500	Tone 3 131.8	N	H	A	
12	<b>TACTICAL</b>	<b>VTAC 12</b>	<b>FSR NORTH &amp; SOUTH</b>	154.4525	Tone 6 156.7	154.4525	Tone 6 156.7	N	H	A	
13	<b>Air-to-Ground</b>	<b>A/G CMD</b>	<b>ALL DIVISIONS</b>	166.6000	NONE	166.6000	NONE	N	H	A	
14	<b>Air-to-Ground</b>	<b>A/G TAC</b>	<b>ALL DIVISIONS</b>	168.3750	NONE	168.3750	NONE	N	H	A	
15	<b>TACTICAL</b>	<b>CALCORD</b>	<b>MEDICAL</b>	156.0750	Tone 6 156.7	156.0750	Tone 6 156.7	N	H	A	
16	<b>EMERGENCY</b>	<b>AIRGUARD</b>	<b>EMERGENCY</b>	168.6250	NONE	168.6250	Tone 1 110.9	N	H	A	EMERGENCY ONLY

Prepared By (Communications Unit Leader)	Incident Location: Etna	Forest / Unit / Jurisdiction: Klamath NF
<b>Kody Kerwin, COML (925) 953-3044 Communications 24hr: 510-507-1514</b>	County: Siskiyou State: CA	Latitude: " N Longitude: W

INCIDENT RADIO COMMUNICATIONS PLAN (ICS 205)			Incident Name			Date/Time Prepared			Operational Period Date/Time				
			<b>SHELLY IA</b>			<b>7/25/2024 1400</b>			<b>7/26/2024 to 7/27/2024 0700 to 0700</b>				
<b>CONTROLLED CLASSIFIED INFORMATION/BASIC</b>													
<b>Utilization of any frequency other than those listed on this form are prohibited, subject to fines by the FCC and demobilization from the incident.</b>													
Zn Ch	Function	Channel Name/Trunked Radio System Talkgroup	Assignment	RX Freq	N or W	RX Tone/NAC	TX Freq	N or W	Tx Tone/NAC	Dev	Pwr	Mode A, D or M	Remarks
1	<b>DISPATCH</b>	<b>FS KNF</b>	<b>DISPATCH</b>	171.5250		NONE	165.4125		OST	N	H	A	DISPATCH
2	<b>COMMAND</b>	KNF SALMON	<b>IA COMMAND</b>	172.4000		NONE	164.1250		OST	N	H	A	
3	<b>COMMAND</b>	KNF RIVER	<b>IA COMMAND</b>	172.2500		NONE	165.0750		OST	N	H	A	
4	<b>TACTICAL</b>	<b>R5 T4</b>	<b>IA TAC</b>	166.5500		NONE	166.5500		OST	N	H	A	
5	<b>Air-to-Ground</b>	<b>A/G 43</b>	<b>IA A/G</b>	167.6000		NONE	167.6000		OST	N	H	A	
6	<b>DISPATCH</b>	<b>SKU-L</b>	<b>DISPATCH</b>	151.3250		Tone 6 156.7	159.3600		OST	N	H	A	
7	<b>TACTICAL</b>	<b>CDF T9</b>	<b>IA TAC</b>	151.3850		Tone 16 192.8	151.3850		OST	N	H	A	TONE 16 (192.8)
8	<b>TACTICAL</b>	<b>CDF T10</b>	<b>IA TAC</b>	151.4000		Tone 16 192.8	151.4000		OST	N	H	A	TONE 16 (192.8)
9	<b>Air-to-Ground</b>	<b>CDF A/G 1</b>	<b>IA A/G</b>	151.2200		Tone 16 192.8	151.2200		OST	N	H	A	TONE 16 (192.8)
10													
11													
12													
13													
14	<b>Air-to-Ground</b>	<b>A/G TAC</b>	<b>ALL DIVISIONS</b>	168.3750		NONE	168.3750		OST	N	H	A	
15	<b>TACTICAL</b>	<b>CALCORD</b>	<b>ALL DIVISIONS</b>	156.0750		Tone 6 156.7	156.0750		OST	N	H	A	MEDICAL EVAC TONE 6 (156.7)
16	<b>EMERGENCY</b>	<b>AIRGUARD</b>	<b>EMERGENCY</b>	168.6250		NONE	168.6250		OST	N	H	A	EMERGENCY ONLY - TONE 1 (110.9)
Prepared By (Communications Unit Leader) <i>Kody Kerwin</i>						Incident Location: ETNA			Forest / Unit / Jurisdiction: KLAMATH NF				
<b>Kody Kerwin, COML (925) 953-3044 Communications: 510-507-1514</b>						County: SISKIYOU	State: CA		Latitude: " N		Longitude: W		



**Shelly Fire Ground Support**  
**Yreka Ground Support / Demob Inspections**

279 Sharps Road Yreka, Ca 96097

**Fuel Location**

Mudd Lake Oil 1712 Fairlane Road, Yreka, Ca 96097 ICP

**Repairs**

Glen McHenry 530-598-2631

**Ground Support**

Jeremy Christofferson (GSUL) 951-287-0886

Kevin Berghaus (GSULT) 714-715-0481

**Etna Ground Support / Demob Inspections**

125 Horn Lane Etna, Ca, 96027

**0600-2000**

**Ground Support**

Ground Support Dave Trussell 530-251-3109

Ground Support Dave Corral 805-358-7532

**Transportation**

State Transportation Request Contact Charles Palmer (CJ) 530-925-4544

Federal Transportation Request Contact Miguel 209-768-0142



## FINANCE MESSAGE

<b>Fire Name:</b> Shelly Fire
<b>Fire Number:</b> CA-KNF-005159
<b>Accounting Code:</b> P5 R18J (0505)
<b>Email:</b> <a href="mailto:2024.shelly.finance@firenet.gov">2024.shelly.finance@firenet.gov</a>
<b>Incident Phone:</b> 530-536-0781

### Finance Documents Needed upon "Check In" (If Not Already Submitted):

Please email these documents or scan the QR Code below, attach & submit.			
<b>FED Equipment/ Crews:</b> <ul style="list-style-type: none"> <li>Manifest - showing employment type (GS or WG) or AD rates if applicable</li> </ul>	<b>Overhead:</b> <ul style="list-style-type: none"> <li>AD/Casual Hire Form</li> <li>If regular Agency please ensure "GS" or "WG" is written on your CTR</li> </ul>	<b>Contract Equipment/ Contract Crews:</b> <ul style="list-style-type: none"> <li>Agreement</li> <li>Manifest</li> <li>Resource Order</li> <li>Inspections</li> </ul>	<b>Cooperator:</b> <ul style="list-style-type: none"> <li>Cooperative Agreement</li> <li>Resource Order</li> </ul>

### When emailing finance:

- Overhead/FED: *subject line:* TIME, Resource #, Resource Name
- Equipment/Cooperator: *subject line:* EQTR, Resource #, Resource Name

**Prior to your demob date, please contact Finance *via email* to expedite the demob process. Upon submittal of your final CTR/Shift Tickets, Finance will email you copies of your pay documents for review and signature.**

**Local Government Resources & CalOES on CFAA also check-in here:**



**Rick Young CalOES AREP  
616-541-3165**



## FINANCE MESSAGE



---

### CAL FIRE TIME Process

**Shift Tickets:** Line supervisors complete for Hired Equipment and submit hard copy to TIME, OR complete an e-Shift Ticket online at <https://shifftickets.fire.ca.gov>.

**Personnel Time:** All CAL FIRE personnel check-in to TIME trailer located at fairgrounds in Yreka.

**Hired Equipment:** All Hired Equipment resources on a 20,000-block request number, check-in to TIME trailer located in Yreka with a copy of your agreement.

**Local Government:** Check-in with OES Rep, located at the fairgrounds in Yreka.

### COMP/CLAIMS

Report all injuries and damage claims to the Comp Claims Trailer located at Yreka Fairgrounds.

- Josh Chastain: (530) 922-0131

### AO-341 Hotel Rosters

Please sign the roster for every night.

### Feeding

Feeding is provided at the Yreka fairgrounds.

Off-Site feeding: Will be updated and posted DAILY at Motels Unit.

# SHIFT TICKET EXAMPLE

EMERGENCY SHIFT TICKET and EVALUATION FORM					Contractor Name DOZER DUDE	
Incident or Project Name <b>SHELLY</b>		Incident Number <b>CAKNF005159</b>	Request Number <b>E# HERE</b>		Operator #1 <b>BOB SMITH</b>	Operator #2 <b>TOM SMITH</b>
Agreement Number <b>FISCAL ID #</b>					Operator Furnished By: <input checked="" type="checkbox"/> Contractor <input type="checkbox"/> Government	
Equipment Make <b>CAT</b>		Equipment Model / Type <b>D6XM</b>			Operating Supplies Furnished By: <input checked="" type="checkbox"/> Contractor <input type="checkbox"/> Government	
Serial Number <b>12345678</b>		Licence Number <b>1234567</b>			Equipment Status <input checked="" type="checkbox"/> Inspected <input checked="" type="checkbox"/> Under Agreement <input type="checkbox"/> Released by Government <input type="checkbox"/> Withdrawn by Contractor	
Equipment Use (Circle) <b>Hours</b> Days / Miles						
Date Mo / Day	Start	Stop	Work	Assignment		
<b>7/21</b>	<b>0700</b>	<b>2400</b>	<b>17</b>	<b>DIV M</b>		
<b>7/22</b>	<b>0001</b>	<b>0700</b>	<b>7</b>	<b>DIV M</b>		
Vendor Rating Poor* Avg. Good Exc. N/A					Govt. Rep. Name and Position - PRINT <b>Mike Weber</b>	
Met Performance Expectations					Govt. Rep. Signature <i>Mike Weber</i>	
Equipment in Safe Working Condition					Contractor Signature <i>Bob Smith</i>	
Operator Skill Level					Date <b>07/22/24</b>	
Operates Safely					Time <b>0800</b>	
Operator's Cooperation Level					Remarks/Comments **	
Overall Performance					CALFIRE 297 (Rev 3-2011)	
* NOTE: Any rating of POOR requires an explanation in Comment Section. **Final evaluation or for more documentation, use an ICS Form 230 or equivalent.						
Pink - Finance		Blue - Home Unit HE Coordinator		Yellow - Vendor		White - Govt Representative

24 HOUR RESOURCE

EMERGENCY SHIFT TICKET and EVALUATION FORM					Contractor Name RUNNER Co.	
Incident or Project Name <b>SHELLY</b>		Incident Number <b>CAKNF005159</b>	Request Number <b>E # HERE</b>		Operator #1 <b>BOB SMITH</b>	Operator #2
Agreement Number <b>FISCAL ID #</b>					Operator Furnished By: <input checked="" type="checkbox"/> Contractor <input type="checkbox"/> Government	
Equipment Make <b>FORD</b>		Equipment Model / Type <b>STAKESIDE</b>			Operating Supplies Furnished By: <input checked="" type="checkbox"/> Contractor <input type="checkbox"/> Government	
Serial Number <b>12345678</b>		Licence Number <b>1234567</b>			Equipment Status <input checked="" type="checkbox"/> Inspected <input checked="" type="checkbox"/> Under Agreement <input type="checkbox"/> Released by Government <input type="checkbox"/> Withdrawn by Contractor	
Equipment Use (Circle) <b>Hours</b> Days / Miles						
Date Mo / Day	Start	Stop	Work	Assignment		
<b>7/21</b>	<b>0700</b>	<b>1900</b>	<b>12</b>	<b>DIV M</b>		
Vendor Rating Poor* Avg. Good Exc. N/A					Govt. Rep. Name and Position - PRINT <b>Mike Weber</b>	
Met Performance Expectations					Govt. Rep. Signature <i>Mike Weber</i>	
Equipment in Safe Working Condition					Contractor Signature <i>Bob Smith</i>	
Operator Skill Level					Date <b>07/21/24</b>	
Operates Safely					Time <b>2000</b>	
Operator's Cooperation Level					Remarks/Comments **	
Overall Performance					CALFIRE 297 (Rev 3-2011)	
* NOTE: Any rating of POOR requires an explanation in Comment Section. **Final evaluation or for more documentation, use an ICS Form 230 or equivalent.						
Pink - Finance		Blue - Home Unit HE Coordinator		Yellow - Vendor		White - Govt Representative

12 HOUR RESOURCE

**Turn shift tickets into Time Unit.**



# PUBLIC INFORMATION

Public Information Line: 530-214-9739 or dial 211

CURRENT INCIDENT STATUS	
Incident Start Date: 07/03/2024	Incident Start Time: 1:27 AM
Cause: Under Investigation	Acres:
Containment:	Total Personnel:

### MEDIA

California State Penal Code Section 409.5(d) allows the news media to enter scenes of disaster, riot, or civil disturbance. Correctly identified news media members should not be restricted from entering locations specified within the code. However, this does not include crime scenes or private property and does not imply that the news media may interfere with incident operations while in the areas of concern. More information can be found by following the QR code.



### PHOTOGRAPHS AND VIDEOS OF THE INCIDENT

The Public Information Office would like copies of the video and pictures that were safely took while not in an emergency, fire suppression activity, or overhead assignment. Bring video and pictures to the Public Information trailer; photos will be reviewed and possibly uploaded to social media. As a reminder the Public Information Office does not want photographs or videos that depict unsafe, unprofessional, or embarrassing circumstances, which are a severe breach of ethics.



### LOST AND FOUND

The Information Section will manage lost and found items for the incident at the PIO Trailer.

### SHELLY FIRE LINKTREE

Use the QR code to the right to get quick access to information about the current status of the fire and for resources for residents returning home for wildfire.



# Shelly Incident Fire Suppression Repair Specs on Forest Service Lands

Suppression repair on the Shelly incident may take place on areas where suppression activities occurred on Forest Service lands. The purpose for repair is to minimize suppression impacts to resources identified by the Klamath National Forest (e.g., cultural, trails, wildlife, roads, water quality, etc.). As needed, communicate Resource Advisors on repair activities to identify site-specific repair needs and avoid confusion. A REAF and/or ARCH may be required to be present during suppression repair activities. All suppression repairs will need inspection by READ shop personnel before the repair is considered complete. This document highlights key elements of the longer Fire Suppression Repair Plan.

## Fire Lines (Hand and Dozer)

- Construct water bars and/or rolling dips on fire lines (see Diagram 1 for effective water bars). Remove berms.
- Excavators are preferred over dozers for dozer line repairs; and use hand crews on dozer lines when in areas identified as sensitive.
- Use hand crews on hand lines.

## Discrete Suppression Activity Areas (Spike Camps, Drop Points, Staging Areas, Safety Zones, Tanks, Helispots, Sling Sites, etc.)

- Spread out any berms that were created.
- Unless directed otherwise, pile and plastic cover all slash generated during area construction for ease of future burning. Exception is Wilderness, where slash will be lopped and scattered.
- At Wilderness camps and sling sites, decompact soils at camp sites and user created trails, recontour tents sites, scatter slash or cut material, and dismantle structures such as campfire rings and latrines.

## FS System Trails

- Restore trail surface and water drainage features.
- Spread accumulations of duff and mineral soil but consider keeping foot trail to bare mineral soil. Desired trail bed

width is 24 inches on primary trails and 18 to 24 inches on secondary trails.

- Cut all trees fallen across trails to retain a minimum 8 ft corridor (4 ft from centerline in either direction) clear of logs for stock passage. Make only as many cuts as required to remove the log sections when in wilderness. Do not bevel or otherwise modify cut ends.
- In Wilderness, low stump. Do not waffle cut stumps.
- Pile and plastic cover all slash generated where feasible, i.e. at or near trailheads. Otherwise, scatter slash away from system trails used as fireline.
- See Diagram 2 for stock clearance distances

## Pacific Crest National Scenic Trail (PCT)

- Where PCT is in Wilderness, use Wilderness repair specs
- Where handlines cross or are immediately adjacent (and visible) to the PCT -
  - o Pull back berms, smooth out soil and recontour
  - o Disguise handline so it is not visible to the public
  - o Place cut ends of trees away from the trail
  - o Place vegetation in an “unorderly, natural, or jack-straw manner”
  - o Do not line the trail with parallel rocks or logs as such can create drainage issue long-term
  - o Disperse/hide cut rounds off trail

## Other Repair Concerns

- System roads utilized for fire suppression will be returned to pre-existing conditions. Consult with READ for specifics.
- Remove structure wrap, unnecessary flagging, and signage.
- For special circumstance suppression repair needs (wetlands and meadows, water sources, stream crossings, riparian areas, recreation) consult with READ.
- At risk sensitive natural cultural resource areas are flagged (orange and white striped). Impacts to these sites due to suppression repair shall be reported to the READ shop.
- Seed and mulch may be needed as per direction by READ.

# Shelly Incident Fire Suppression Repair Specs on Forest Service Lands

## Diagrams for Suppression Repair

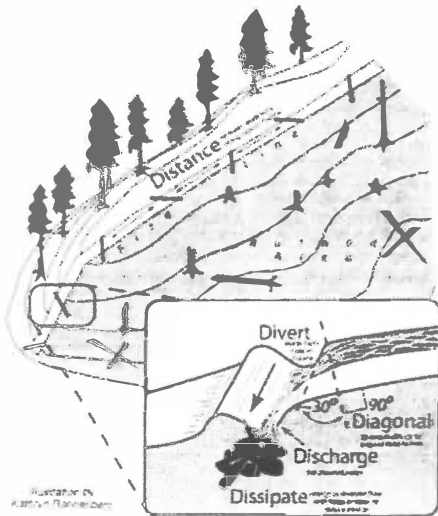
### Diagram 1

#### Effective Waterbars

When locating and building water bars, place them the right **distance** apart, at a **diagonal** to the fire line, so that they **divert**, then **discharge**, then **dissipate** the energy of the flowing water. Be sure to make them deep enough so they'll be durable, and that soil does **not** block the water bar outlet.

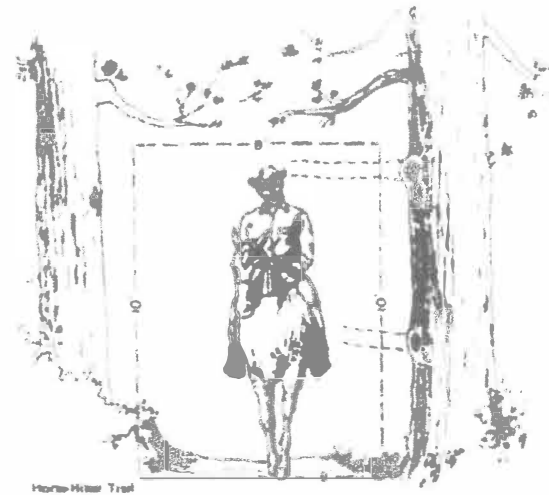
#### Recommended spacing for waterbars on firelines.

Fireline slope %	Maximum Distance Apart (feet)	
1-5	200	<i>Waterbars should be at least 2 pulaski (4-6 inches) widths wide and 12-24 inches high for handlines.</i>
6-20	125	
21-40	60	
41-60	40	
>60	25	



### Diagram 2

#### TRAVELWAY CLEARING



# Shelly Incident Fire Suppression Repair Plan – State DPA

## CA-KNF-005159

The Shelly Fire has burned in the steep headwater area of the Scott River. Due to the steep and highly erosive granitic soil types and sensitive nature of the watershed that contains such values as listed anadromous salmonids, Suppression Repair Specialists shall be used to supervise repair work and give final approval of finished work. Fire Suppression Repair within the State Direct Protection Area will occur on dozer lines, handlines, roads, and other areas utilized by fire suppression resources. The purpose of the repair is to mitigate possible adverse effects to resources resulting from fire suppression activities.

**Dozerlines-** Dozerline constructed on this incident varies between single blade width to five blade widths (approximately 12-50 feet). Berms and push-piles shall be spread to the extent feasible and cleared of organics. This is generally accomplished by back-blading with a tractor or with an excavator. Debris piled against standing timber shall be pulled back while taking care not to damage growing stock with the tractor blade or an excavator bucket and thumb. Masticators or chippers may be utilized to dispose of concentrated organic material along roads, around structures and in strategic areas (i.e. fuelbreaks). At helipots/ staging areas and safety zones, remove soil, and/or breach berms so that runoff can be dissipated. Cross-drain these areas to effectively dissipate water if necessary.

Waterbreaks shall be installed at a spacing which corresponds to a moderate and high hazard rating in the California Forest Practice Rules. The following waterbreak spacing information is a general guide for maximum spacing, actual location of waterbreaks should be tailored to the topography and placement should be suited to the best dispersal of water flow:

<u>Line Gradient</u>	<u>Maximum Waterbreak Spacing</u>
0-10%	200 Feet
11-25%	150 Feet
26-50%	100 Feet
>50%	75 Feet

Waterbreaks shall be constructed at an approximately 45-degree angle and shall be a minimum depth of 10 inches from the bottom of the cut to the top of the berm. Where possible the discharge from the waterbreaks shall be directed into vegetated areas to minimize erosive forces.

Where slopes exceed the range at which a tractor can effectively work, waterbreaks shall be constructed with handtools. Where dozerline has crossed watercourses, the channel of the watercourse will be cleared of soil and debris to re-establish the watercourse channel.

**Hand Constructed Fireline-** Hand constructed fireline shall have water breaks installed with hand tools. The waterbreaks shall be approximately 10 inches in depth from the bottom of the cut area to the top of the berm. Waterbreaks shall be angled at least 45 degrees to the fireline. The interval between waterbreaks shall be approximately 50 feet with closer spacing as needed on steep pitches. No waterbreaks shall be required where the fireline traverses a side hill, however if the line is cup trenched the berm shall be breached periodically to prevent channelization of runoff.

Where hand constructed fireline crosses a watercourse, any soil material deposited in the channel shall be removed and placed in a location where it will not wash back into the watercourse. Waterbreaks shall be installed on the approaches to the crossing to prevent sediment from eroding from the fireline into the watercourse.

**Fire Roads-** Roads used in fire suppression activities shall be left in at least as good a condition as they were found. Gravel and soil surface roads shall be watered to prevent excessive dust formation. Where suppression activities have damaged or rendered road drainage facilities non-functional, waterbreaks or drivable drainage dips shall be installed for drainage. Where suppression activities have filled in or damaged inside ditches, the ditches shall be cleaned and left unobstructed.

**Archaeological Resources** - If any sites are located during suppression repair activities, work will stop in that location and the Suppression Repair Lead will be notified.

**Other Repair Concerns-** Broken, damaged fences, and/or gates damaged as the result of the fire control operations shall be repaired.

If you have any questions, please contact Siskiyou Unit Forester, Steve Wilson at (530) 842-3516.

# *Training Specialist Message*

## Etna Camp:

---

### **How to register as a Trainee:**

1. Use the QR code or come by the training trailer.



### **How to close-out your training assignment:**

1. **Trainer and Trainee:** Have a conversation, open dialog on expectations and goals for the assignment.
2. **Trainer:** Complete an Evaluation Record in the back of the Position Task Book and make as many entries as possible within the individual tasks. Discuss this with your Trainee.
3. **Trainer:** Complete an individual performance rating (ICS 225) and go over the performance rating with your Trainee.
4. **Trainer and Trainee:** Come by the training trailer with the above documents to close out your assignment.

Robert Rivelle – TNSP  
707-498-1761  
rivelle@nps.gov



# SHELLY FIRE DEMOB LIST

## FRIDAY 07/26/2024

### CREWS

C-72	CRW2	NORTH PACIFIC FORESTRY	0700
C-75	CRW2	OC 24	0730

### EQUIPMENT

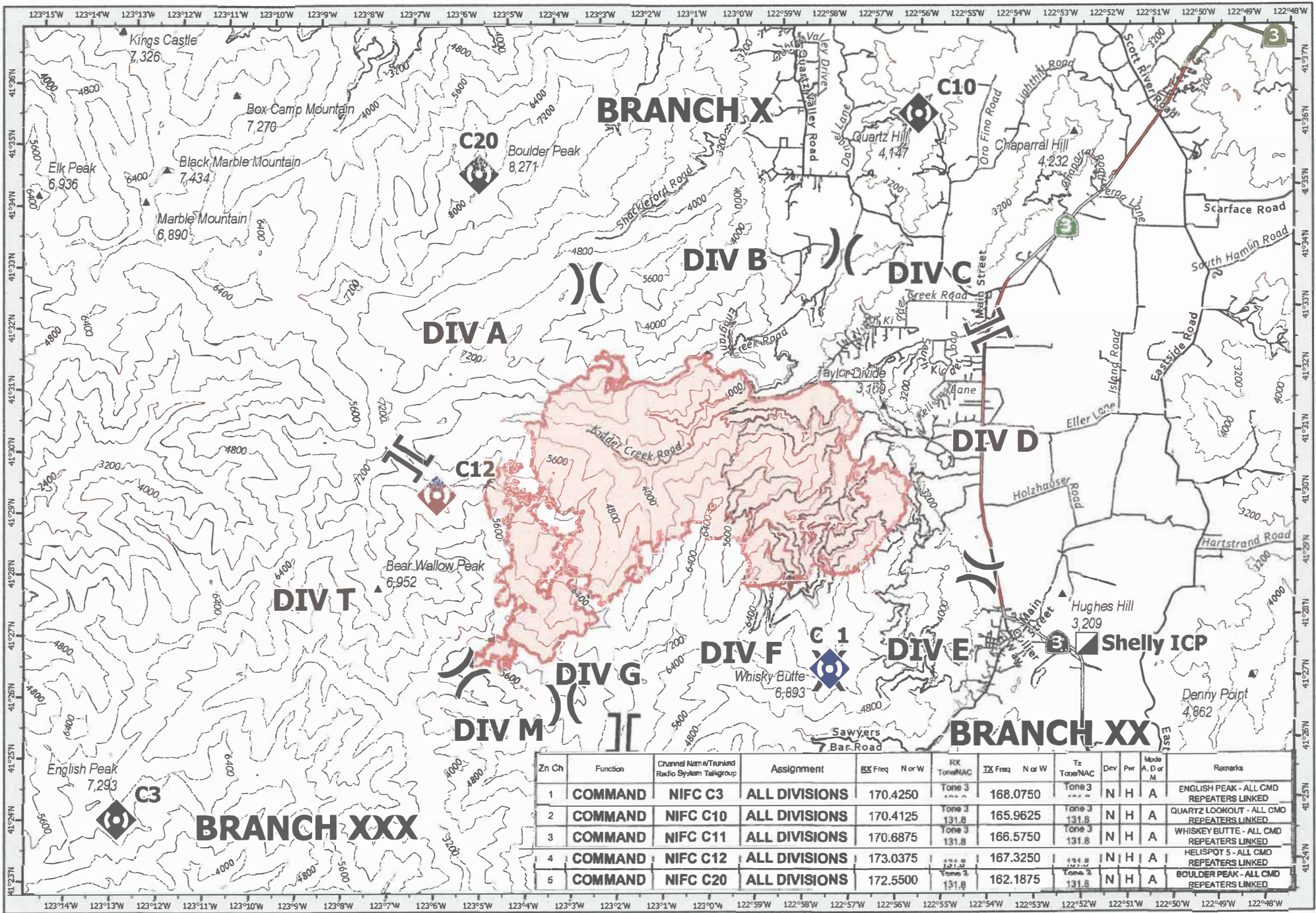
E-78	DZR2	JOHNSON	0715
E-438	EXC1	HACKER	0745

### OVERHEAD

O-158	FMOD	WEST COAST CUTTING	0630
O-298	HEQB	TIDWELL, MICHAEL	0645
O-299	HEQB	MAYFIELD, GLEN	0700
O-323	TFLD	CORBIN, TYLER	0715
O-375	PSCT	BAILEY, JAMES	0730
O-379	HEQB	SPENCER, HOWARD	0745
O-380	HEQB	SMITH, BRANDON	0800
O-390	TFLD	GERMAN, BRIAN	0815
O-391	TFLD	SCATES, MITCHELL	0830
O-411	ARCH	JORGENSEN, JOHN	0845
O-440	PIO3	BRAKER, EMILY	0900
O-442.60	OPBD	LAENG, ROBERT	0915
O-442.61	DPRO	LUCAS, BRANT	0930
O-450	PIO3	GARDNER, STEPHEN	0945

Get checkout sheet at Demob trailer. Report to Finance at listed time.

THIS PAGE INTENTIONALLY LEFT BLANK



Zh Ch	Function	Channel Name/Trunked Radio System Talkgroup	Assignment	RX Freq	N or W	RX Tone/NAAC	TX Freq	N or W	TX Tone/NAAC	Dev	Pwr	Mode A, D or M	Remarks
1	COMMAND	NIFC C3	ALL DIVISIONS	170.4250		Tone 3 131.8	168.0750		Tone 3 131.8	N	H	A	ENGLISH PEAK - ALL CMD REPEATERS LINKED
2	COMMAND	NIFC C10	ALL DIVISIONS	170.4125		Tone 3 131.8	165.9625		Tone 3 131.8	N	H	A	QUARTZ LOOKOUT - ALL CMD REPEATERS LINKED
3	COMMAND	NIFC C11	ALL DIVISIONS	170.6875		Tone 3 131.8	166.5750		Tone 3 131.8	N	H	A	WHISKEY BUTTE - ALL CMD REPEATERS LINKED
4	COMMAND	NIFC C12	ALL DIVISIONS	173.0375		Tone 3 131.8	167.3250		Tone 3 131.8	N	H	A	HELISPOT 5 - ALL CMD REPEATERS LINKED
5	COMMAND	NIFC C20	ALL DIVISIONS	172.5500		Tone 2 131.8	162.1875		Tone 2 131.8	N	H	A	BOULDER PEAK - ALL CMD REPEATERS LINKED

**COMMUNICATIONS**  
**SHELLY**  
 CA-KNF-005159  
 07/25/24 0700

- ▭ Shelly Fire
- Repeater
- Branch Break
- Incident Command Post
- ) ( Division Break
- ▲ Gap; Summit

N

Miles

0 1 2 4

NAD83 CA ALBERS  
 Exported: 7/24/2024 17:27

# TRANSPORTATION

SHELLY  
CA-KNF-005159  
07/25/2024

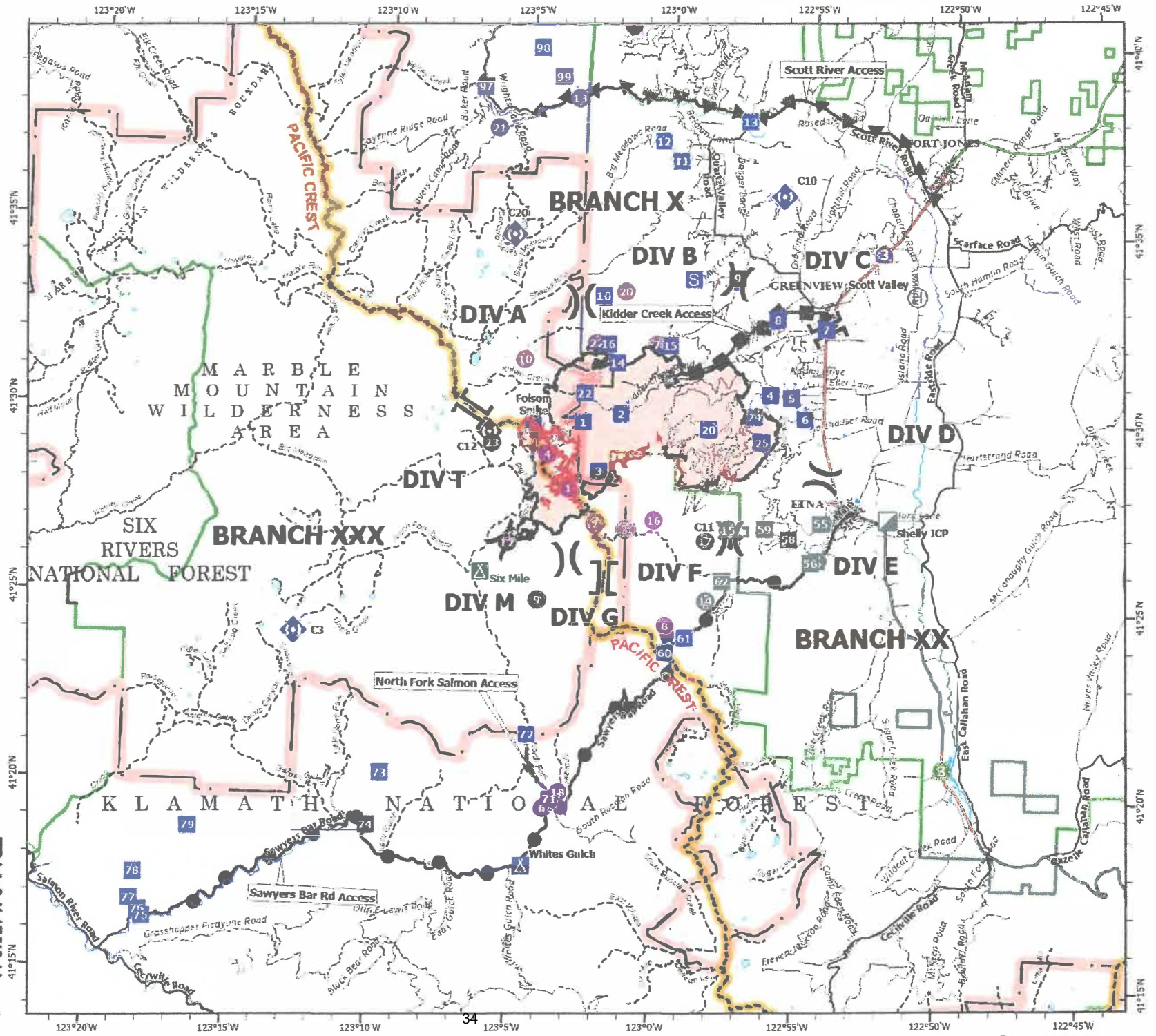


- Shelly Fire
- Contained Fire Edge
- Uncontained Fire Edge
- Branch Break
- Division Break
- Incident Command Post
- Drop Point
- Camp
- Staging Area
- Repeater
- Helibase
- Helispot
- Secondary Highway
- Major Road
- Minor Road
- Pacific Crest Trail
- Trails
- Wilderness
- Forest Boundary
- Transportation Routes
  - Kidder Creek Access
  - North Fork Salmon Access
  - Sawyers Bar Rd Access
  - Scott River Access

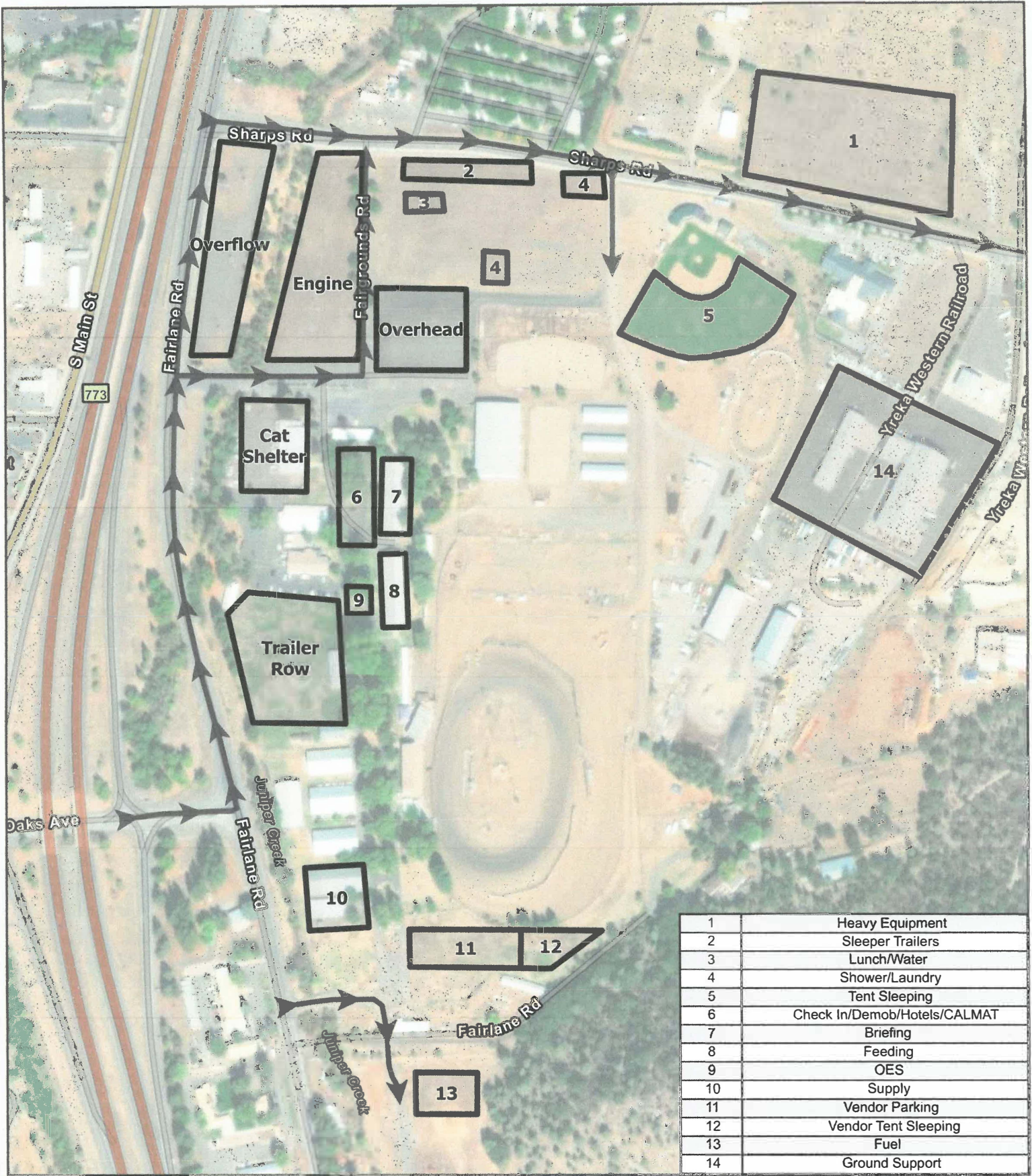


0 1 2 3 4 5 Miles

NAD83 California (Teale) Albers







Datum: NAD 83 1:4,200

Miles



**YREKA BASE CAMP**  
**Shelly Incident**  
**CA-KNF-005159**



© SOLAR PER  
 This map is intended for informational purposes only. It is not intended to be used for any other purpose. The information is derived from a variety of sources and is not guaranteed to be accurate. The information is provided as a service to the public and is not intended to be used for any other purpose.

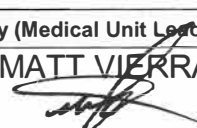

IMT to GIS  
 7/22/2021  
 11:42 AM







# MEDICAL PLAN (ICS 206 WF) TEAM SHELLY

1. Incident Name			2. Operational Period			
<b>SHELLY INCIDENT CA-KNF-005159</b>			Date/Time: <b>07/26/2024 – 07/27/2024 0700-0700</b>			
3. EMS / Ambulance Services/Aid Stations						
Name	Location	Frequency/Phone	Advanced Life Support (ALS)			
			Yes	No		
MT. SHASTA AMBULANCE	YREKA, CA	Shelly Communications 510 507-1514		<b>X</b>		
ETNA AMBULANCE	ETNA, CA	Shelly Communications 510 507-1514	<b>X</b>			
MT. MEDICS Aid Station	ICP	530-859-2799	<b>X</b>			
4. Air Rescue / Air Ambulance Services						
Name	Phone	ETA over Incident	Type of Aircraft & Capability			
MERCY AIR	Yreka Interagency Command Center 530-841-4600	1 HR, 5MIN	AIR AMBULANCE, 24 HR ALS, NO HOIST			
PHI	Yreka Interagency Command Center 530-841-4600	45 MIN	AIR AMBULANCE, 24 HR ALS, NO HOIST			
REACH AIR	Yreka Interagency Command Center 530-841-4600	45 MIN	AIR AMBULANCE, 24 HR ALS, NO HOIST			
CHP	Yreka Interagency Command Center 530-841-4600	30 MIN	0600-0230, ALS, DAY HOIST ONLY, NO SHORT HAUL			
COAST GUARD	Yreka Interagency Command Center 530-841-4600	1 HR, 40 MIN	24 HR HOIST, BLS ONLY			
National Guard (G823)	Yreka Interagency Command Center 530-841-4600	30 MIN	24 HR HOIST, ALS			
5. Hospitals (all times estimated from incident location)						
Name & Level	GPS Datum – WGS 84 Degrees Decimal Minutes	Travel Time Air Gnd	Phone	Helipad Yes No	Address	
UC DAVIS MEDICAL CENTER LEVEL 1 TRAUMA	Lat: 38°33.292'N	1.5hr 6hr	916-734-3790 ER Desk	X	2315 Stockton Blvd. Sacramento, CA 95817	
	Long: 121°27.326'W					
MERCY MEDICAL CENTER Redding LEVEL 2 TRAUMA	Lat: 40°34.325'N	40m 3hr	530-225-7200 ER Desk	X	2175 Roseline Ave. Redding, CA 96001	
	Long: 122°23.700'W					
ASANTE ROGUE REGIONAL MEDICAL CENTER-LEVEL 2	Lat: 42°19.07'N	20m 2hr	541-789-7132 ER Desk	X	2825 E. Barnette Rd. Medford, OR 97504	
	Lat: 122°49.90'W					
MERCY MEDICAL CENTER Mt. Shasta LEVEL 3 TRAUMA	Lat: 41°19.111'N	30m 2hr	530-926-9360 ER Desk	X	914 Pine St. Mt. Shasta. CA 96067	
	Long: 122°19.200'W					
FAIRCHILD MEDICAL CENTER LEVEL 4 TRAUMA	Lat: 41°43.181'N	20m 1.5h	530-841-6292 ER Desk	X	444 Bruce St. Yreka, CA 96097	
	Long: 122°38.757'W					
6. Division / Crew Emergency Pre-Plan <span style="float: right;"><i>Update and discuss with assigned resources daily.</i></span>						
Fireline EMT / Medic's Division / Branch Location						
Air Hoist site location site: Lat: / Long: / Elevation:						
Helispot: Lat: / Long: / Elevation:						
7. Prepared By (Medical Unit Leader)			8. Date/Time		9. Reviewed By (Safety Officer)	
MATT VIERRA MEDL 			07/25/2024 1800			
			39		07/25/2024 1800	

# MEDICAL PLAN (ICS 206 WF) TEAM SHELLY

Medical Incident Report																													
<p><b>FOR A NON-EMERGENCY INCIDENT, WORK THROUGH CHAIN OF COMMAND TO REPORT AND TRANSPORT INJURED PERSONNEL AS NECESSARY.</b></p> <p><b>FOR A MEDICAL EMERGENCY: IDENTIFY ON SCENE INCIDENT COMMANDER BY NAME AND POSITION AND ANNOUNCE "MEDICAL EMERGENCY" TO INITIATE RESPONSE FROM IMT COMMUNICATIONS/DISPATCH.</b></p>																													
<p><b>Use the following items to communicate situation to communications/dispatch.</b></p>																													
<p><b>1. CONTACT COMMUNICATIONS / DISPATCH</b> (Verify correct frequency prior to starting report)  <i>Ex: "Communications, Div. Alpha. Stand-by for Emergency Traffic."</i></p> <p><b>2. INCIDENT STATUS:</b> Provide incident summary (including number of patients) and command structure.  <i>Ex: "Communications, I have a Red priority patient, unconscious, struck by a falling tree. Requesting air ambulance to Forest Road 1 at (Lat./Long.) This will be the Trout Meadow Medical, IC is TFLD Jones. EMT Smith is providing medical care."</i></p>																													
Severity of Emergency / Transport Priority	<input type="checkbox"/> <b>RED / PRIORITY 1 Life or limb threatening injury or illness. Evacuation need is IMMEDIATE</b> <i>Ex: Unconscious, difficulty breathing, bleeding severely, 2° – 3° burns more than 4 palm sizes, heat stroke, disoriented.</i> <input type="checkbox"/> <b>YELLOW / PRIORITY 2 Serious Injury or illness. Evacuation may be DELAYED if necessary.</b> <i>Ex: Significant trauma, unable to walk, 2° – 3° burns not more than 1-3 palm sizes.</i> <input type="checkbox"/> <b>GREEN / PRIORITY 3 Minor Injury or illness. Non-Emergency transport</b> <i>Ex: Sprains, strains, minor heat-related illness.</i>																												
Nature of Injury or Illness & Mechanism of Injury			Brief Summary of Injury or Illness <i>(Ex: Unconscious, Struck by Falling Tree)</i>																										
Transport Request			Air Ambulance / Short Haul/Hoist Ground Ambulance / Other																										
Patient Location			Descriptive Location & Lat. / Long. <i>(WGS84)</i>																										
Incident Name			Geographic Name + "Medical" <i>(Ex: Trout Meadow Medical)</i>																										
On-Scene Incident Commander			Name of on-scene IC of Incident within an Incident <i>(Ex: TFLD Jones)</i>																										
Patient Care			Name of Care Provider <i>(Ex: EMT Smith)</i>																										
<p><b>3. INITIAL PATIENT ASSESSMENT:</b> Complete this section for each patient as applicable (start with the most severe patient)</p> <p>Patient Assessment: See IRPG PAGE 106</p>																													
Treatment:																													
<p><b>4. TRANSPORT PLAN:</b></p> <p>Evacuation Location (if different): <i>(Descriptive Location (drop point, intersection, etc.) or Lat. / Long.)</i> Patient's ETA to Evacuation Location:</p>																													
Helispot / Extraction Site Size and Hazards:																													
<p><b>5. ADDITIONAL RESOURCES / EQUIPMENT NEEDS:</b></p> <p><i>Example: Paramedic/EMT, Crews, Immobilization Devices, AED, Oxygen, Trauma Bag, IV/Fluid(s), Splints, Rope rescue, Wheeled litter, HAZMAT, Extrication :</i></p>																													
<p><b>6. COMMUNICATIONS: Identify State Air/Ground EMS Frequencies and Hospital Contacts as applicable</b></p> <table border="1" style="width: 100%; border-collapse: collapse;"> <thead> <tr> <th style="width: 15%;">Function</th> <th style="width: 25%;">Channel Name/Number</th> <th style="width: 15%;">Receive (RX)</th> <th style="width: 15%;">Tone/NAC *</th> <th style="width: 15%;">Transmit (TX)</th> <th style="width: 15%;">Tone/NAC *</th> </tr> </thead> <tbody> <tr> <td>COMMAND</td> <td></td> <td></td> <td></td> <td></td> <td></td> </tr> <tr> <td>AIR-TO-GRND</td> <td></td> <td></td> <td></td> <td></td> <td></td> </tr> <tr> <td>TACTICAL</td> <td></td> <td></td> <td></td> <td></td> <td></td> </tr> </tbody> </table>						Function	Channel Name/Number	Receive (RX)	Tone/NAC *	Transmit (TX)	Tone/NAC *	COMMAND						AIR-TO-GRND						TACTICAL					
Function	Channel Name/Number	Receive (RX)	Tone/NAC *	Transmit (TX)	Tone/NAC *																								
COMMAND																													
AIR-TO-GRND																													
TACTICAL																													
<p><b>7. CONTINGENCY: Considerations:</b> If primary options fail, what actions can be implemented in conjunction with primary evacuation method? Be thinking ahead. .</p>																													
<p><b>8. ADDITIONAL INFORMATION:</b> Updates/Changes, etc. .</p>																													
<p><b>REMEMBER:</b> Confirm ETA's of resources ordered. Act according to your level of training. Be Alert. Keep Calm. Think Clearly. Act Decisively. .</p>																													