

**** CORRECTED ****

INCIDENT ACTION PLAN SHELLY INCIDENT

CA-KNF-005159

P5 R18J (0505)

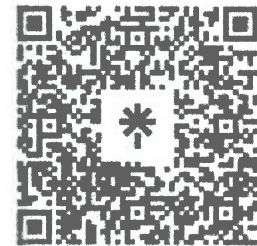


OPERATIONAL PERIOD

7/23/2024 0700

to


7/24/2024 0700



Check-In, IAP, Maps
Demob, Briefing

Tuesday

ORGANIZATION ASSIGNMENT LIST (ICS 203)

1. Incident Name: SHELLY		2. Operational Period: Date From: 7/23/2024		Date To: 7/24/2024	
		Time From: 0700		Time To: 0700	
3. Incident Commander(s) and Command Staff:			7. Operation Section:		
IC/UC's	J. Goss / K. Allison (T) / G. Magaña / J. Andrade (T)		Operations	T. Thane / E. Schwab / J. Topoleski / M. Todd (T)	
Deputy	J. McGowan / D. Scheurich / K. Tsudama (T)		Deputy Operations	S. Lane / D. Esades (T)	
Safety Officer	J. Nickey / T. Mott / McKelvey / C. Hamilton D. Morrison		Night Ops	C. Childers	
Information Officer	D. Carlisi / R. Lubben				
Liaison Officer	C. Prescott / D. Miller (T) / K. O'Hara / L. Ocampo		Branch	X	S. Santos (12 hr)
4. Agency/Organization Representatives:			Division/Group	A	R. Riddle (12 hr)
Agency/Organization	Name		Division/Group	B/C	D. Havina (12 hr)
USFS	J. Kuiken / D. Carlson (T)		Division/Group		
CALFIRE	G. Roath		Division/Group		
CDCR	J. Leventon		Division/Group		
CCC	B. Cody (Yreka) / A. Garcia (Etna)		Branch	XX	
Timber Industries	D. Quigley		Division/Group	D/E	K. Cummings (12 hr)
READ	C. Atwood / C. Vialiando		Division/Group		
Cultural Specialist	H. Johannsen		Division/Group		
BIA	G. Perry		Division/Group		
Quartz Valley Tribe	Chairman H. Bennett		Division/Group		
Karuk Tribe	Tribal Representative G. Moon		Branch	XXX	R. Laeng (12 hr) / S. Chapman (12 hr) / M. Johnson (T) (12 hr) <i>J. McCARTY</i>
			Division/Group	F/G/M	D. Helgeson (12 hr) / B. Boatman (T)(12 hr)
			Division/Group	T	J. Airhart (12 hr)
			Division/Group	FSR I	G. Pelsma (12 hr)
			Division/Group		
			Branch	Suppression Repair	T. Pederson (12 hr) / S. Wilson (12 hr)(Dep.) / S. Pindell (12 hr)
			Division/Group	FSR North	J. Karp (12 hr)
5. Planning Section:			Division/Group	FSR South	J. McCarty (12 hr) / J. Wildt (T)(12 hr)
Chief	G. Funderburk / G. Garcia / J. Roberts (T)		Division/Group	FSR East	J. Duncan (12 hr) / E. Mattson (T)(12 hr)
Deputy	J. Worden		Division/Group		
Resource Unit	B. Dameron / T. Lewis / B. Brown / M. Thomas S. Frank (T) / T. Hullquist (T)		Staging Area	Yreka Staging	S. McCray (12 hr)
Situation Unit	R. Verdie / K. Parker (T) / J. Handrick / J. Abeel		Branch		
Documentation Unit	RIST		Division/Group		
Demobilization Unit	E. Morgan / E. Litteral		Division/Group		
GISS	M. Hans / J. Roberts / D. Beasley (V) / C. Poli D. Watkins (T) / A. Mead (T)		Division/Group		
FBAN	D. Ostmann / B. Newman / A. Giery (T)		Division/Group		
IMET	D. Shallenberger / J. O'Brien (T) / C. Ledbetter (T)		Division/Group		
Training Tech Spec	R. Rivelle / S. Vargas		Air Operations Branch		Director: R. Terraciano / T. Swanson / C. Wallace (T)
SOPL	P. Doyle		Air Support Group Supervisor		K. Christy
ITSS	U. Huerta / J. Huerta		Air Tactical Group Supervisor		I. Flattley / L. Murphy (T)
6. Logistics Section			Scott Valley Helibase Manager		L. Stewart
Chief	D. Winn / D. Tumer / R. David / J. Warden		Siskiyou County Helibase Manager		J. Carstensen
Supply Unit	M. Bouslaugh / R. Pecnick / R. Griffith / G. Carney		8. Finance/Administration Section:		
Facilities Unit	N. Sablan / J. Finley		Chief	L. Wilson / D. Hulett / P. Wood (T) / J. Tapia	
Ground Support Unit	D. Trussell / D. Corral / C. Christopherson		Time Unit	T. Reniff / A. Rivera	
Communications Unit	K. Kerwin / J. Carter (T)		Procurement Unit	J. Williams (T) / R. Leanos	
Medical Unit	K. Packwood / M. Vieraa / A. Hendrie		Comp/Claims Unit	J. Chastain	
Food Unit	R. Washington / M. Rivera		Cost Unit	E. Molina / B. Hughes	
Motel Unit	J. Tomsich				
Prepared By:	G. Funderburk / G. Garcia / J. Roberts (T)		Position/Title:	PSC	Signature: 
ICS 203			Date/Time:	7/22/2024	2300 hours
					NIMS IAP

FIRE WEATHER FORECAST

FORECAST NO. 18

NAME OF INCIDENT: Shelly

PREDICTION FOR: Tuesday July 23, 2024

UNIT: Klamath National Forest

TIME AND DATE

SIGNED: David J Shallenberger/Cody Ledbetter

FORECAST ISSUED: 1800 Monday 7/22/24

David Shallenberger IMET - (606) 481-9238

Cody Ledbetter IMET (t) - (828) 244-6563

WEATHER DISCUSSION: The upper-level ridge will be at its peak over the area, resulting in the hottest day in this recent stretch of warmth. Expect hot and dry conditions throughout the day today. Morning RH's recovered modestly again overnight, and minimum RHs today should be in the upper teens to mid 20s in the valleys, with upper 20s on the ridge. Terrain-induced winds will continue with SW-NW flow during the afternoon, gusting to 20 mph in the ridges and aligned valleys. Some moisture does arrive late tonight into tomorrow morning, which brings the chance for an isolated thunderstorm overnight.

TODAY:

WEATHER: Sunny, hot, and dry.

MAXIMUM TEMPERATURE: Highs ranging from the low to mid upper 80s at 6000 feet to upper 90s to low 100s in the valleys.

MINIMUM RELATIVE HUMIDITY: 18-24% in valleys to 25-29% along ridges.

20 FOOT WINDS:

SW of the PCT – Up-slope winds of 3-6 mph mid to late morning becoming SW-NW up-canyon 6-9 mph early afternoon with gusts of 12-14 mph mid to late afternoon and up to 16-20 mph along ridges.

NE of the PCT – Up-slope winds of 3-5 mph becoming E to NE up-canyon 5-8 mph early afternoon then reversing to W-NNW around 1400 and increasing to 13-17 mph with gusts to 20-25 mph late afternoon through evening along ridges and down-canyon winds of 5-7 mph drainage bottoms.

STABILITY: Valley inversions breaking 1200-1300, then unstable in the afternoon.

CHANCE OF THUNDERSTORMS: 0%

TRANSPORT WIND: SW then NW 12-16 mph

TONIGHT:

WEATHER: Increasing clouds overnight, slight chance of a thunderstorm. Modest RH recoveries.

MINIMUM TEMPERATURE: Low to mid 60s along slopes & ridges and upper 50 to low 60s in valleys.

MAXIMUM RELATIVE HUMIDITY: Around 40-50% slopes & ridges and 50-55% valleys.

20 FOOT WINDS: W to NW 10-15 mph diminishing around 2200 then becoming E-SE 3-5 mph along ridges with downslope/down-valley 2-4 mph elsewhere.

STABILITY: Smoke settling into valley inversions.

CHANCE OF THUNDERSTORMS: 15%

TRANSPORT WIND: SSW 18-23 mph

WEDNESDAY: The upper-ridge will start to break down on Wednesday, leading to a slight decrease in temperatures. The remnants of that push of moisture on Tuesday night should keep minimum RH values up Wednesday afternoon, and potentially bring an isolated shower or storm during the early portions of the day. This also looks to be the windiest day in the coming week as an upper trough moves into Washington and Oregon just to our north.

OUTLOOK FOR THURSDAY THROUGH SUNDAY: The ridge will really start to break down for the Thursday and Friday period with a cooling trend expected into the weekend as the trough moves onshore. Thursday should remain rather windy, but also very dry. Dry conditions continue into Friday before RH values begin to improve into the weekend.

Please email weather obs to david.shallenberger@noaa.gov or text them to 606-481-9238. Thanks!

FIRE BEHAVIOR FORECAST

FORECAST NUMBER: 18	TYPE OF FIRE: Wildfire
FIRE NAME: Shelly	OPERATIONAL PERIOD: 07/23 to 07/24 0700 to 0700
DATE ISSUED: July 22, 2024	TIME ISSUED: 1800
UNIT: CA-KNF	SIGNED: /s/ Alexander Giery FBAN (t) 858 335 2244

WEATHER SUMMARY
****Chance Thunderstorms****
(See Fire Weather Forecast)

TOPOGRAPHY: Elevations: 2800'-7,400' Slopes: 0%-100+% (0°- 68°degrees)

FIRE BEHAVIOR NARRATIVE

GENERAL:

- Chance of thunderstorms and outflows may produce gusty and erratic winds.
- Fire behavior to remain persistent with little to no growth.
- Smoldering continues in isolated areas of intense heat along the fires edge.
- Smoke will continue to be visible from creeping and backing fire in interior islands.
- In areas where line is underslung, rolling material may ignite unburned fuels, particularly where receptive fuel beds are below the fires edge.
- Fuels outside the perimeter remain extremely dry and receptive to new ignitions.
- In areas where thermal belts develop overnight, expect fire behavior to be consistent through operational period.

SPECIFIC:

Branch X, DIVS A, B, C: Scattered heat remains along control lines in some areas, especially fire line along the southern portion of DIV A. In the area of Kidder Creek backing and creeping activity will continue in unburned fuels interior of the fire perimeter. There is no anticipation of these to challenge control lines.

Branch XX, DIVS D, E, F: The western side of Div F still holds areas of scattered heat along control lines. This will continue to smolder and creep, potentially backing down toward the western fork of Patterson Creek. Roll out may ignite patches of fuel below underslung line. Sparsity of fuels and discontinuous patches will limit any notable spread or growth.

Branch XXX, DIVS G, M, T: Fire continues to smolder and creep in sparse and separated fuels inside and along fire perimeter. This will continue until fuels are extinguished or completely consumed. Challenge to current control lines is not expected.

Suppression Branch: Fuels are very dry and receptive to potential ignitions in areas of suppression repair outside the perimeter of the fire.

AIR OPERATIONS:

Chance afternoon to evening thunderstorm development.

Possible haze due to smoke drift from fires across the region.

Sunrise: 5:59am, Sunset: 8:36pm, Daylength: 14 hours, 36 minutes

SAFETY:

Look Up, Look Down and Look Around for fire activity loosened material that may become dislodged and roll downhill or causing tripping and fall hazards

ASSIGNMENT LIST (ICS 204 WF)

CONTROLLED UNCLASSIFIED
INFORMATION//BASIC

1. Incident Name: SHELLY	2. Operational Period: Date From: 07/23/24 Date To: 07/24/24 Time From: 0700 Time To: 0700	3. Branch Division X A
---	---	---

4. Operations Personnel:		Page 1 of 1 Alpha
Operations Section Chief: T. Thane / E. Schwab / J. Topoleski / M. Todd (T)	Night Ops: C. Childers	
Branch Director: S. Santos (12 hr)	Branch Safety: M. Krissman	
Division/Group Supervisor: R. Riddle (12 hr)	Air Attack: I. Flattley / L. Murphy (T)	

5. Resources Assigned:		** Resources Below in Bold are 12 Hour **					
Resource Identifier	ALS	LWD	Leader	Personnel	Request #	Hours	Reporting Location
CST1 LMU 9227G (CDCR)			K. Etter	32	C-20013	0700-1900	DP 2
CST1 SKU 9262G (CAL FIRE)			C. Cohen	28	C-20023	0700-1900	DP 2
CR2I BLM FOLSOM LAKE		7/28	R. Hooper	20	C-81	0700-1900	DP 2
EST3 CZU 9171C			E. Bither	17	E-20052	0700-0700	DP 2
WTS2 JOHN SEMPLE 3 → DIE NIGHT		8/4	J. Goldie	2	E-89	1900-0700	DP 2-6
FMOD PVT HOMELAND		8/2	M. Ingersoll J. SANSEVER	2	O-46	0700-1900	DP 2
TFLD SCATES		7/25	M. Scates	1	O-391	0700-1900	DP 2
TFLD(T) MILLER		8/1	J. Miller	1	O-513	0700-1900	DP 2
REMS 11	X	8/1	J. Reardon	4	O-20334	0700-1900	DP 2
AMBO 3 MTN MEDICS	X	8/1	A. Johansen S. PELL	3	E-210	0700-1900	DP 2
EMPF SCHOENBORN	X	7/30	M. Schoenborn	1	O-20168	0700-1900	DP 2
EMTF HAILE		7/26	S. Haile	1	O-20188	0700-1900	DP 2
EMPF CORRAL	X	7/30	B. Corral	1	O-197	0700-0700	SPIKE
EMPF DEJONG	X	7/30	C. Dejong	1	O-198	0700-0700	SPIKE
SOFR QUIGLEY		8/5	T. Quigley	1	O-564	0700-1900	DP 2

6. Work Assignments:

Construct control lines as direct as possible from Kidder Creek south to the PCT to the DIV A/T break.
 Fall hazard trees.
 Improve and hold control lines.
 Mop up 200 feet to the extent safety allows.
 Patrol.

7. Special Instructions:

C-81, ~~O-199~~, and O-198 are spiked out.
O-197

8. Communications

Name	Ch	Function	Rx Freq	Rx Tone	Tx Freq	Tx Tone	Mode	Notes
NIFC C12	4	COMMAND	173.0375	(T3) 131.8	167.3250	(T3) 131.8	A	Helispot 5 - All CMD repeaters linked
CDF T14	6	TACTICAL	159.3075	(T16) 192.8	159.3075	(T16) 192.8	A	
A/G TAC	14	A/G TAC	168.3750	0.0	168.3750	0.0	A	
CALCORD	15	TACTICAL	156.0750	(T6) 156.7	156.0750	(T6) 156.7	A	
AIRGUARD	16	EMERGENCY	168.6250	0.0	168.6250	(T1) 110.9	A	

9. Prepared by: Name: B. Dameron / T. Lewis / B. Brown / M. Thomas
 S. Frank (T) / T. Hullquist (T) **RESL**

Signature: _____

ICS 204 Date/Time: 7/22/2024 2200 Personnel Count: 115

NIMS IAP

CONTROLLED UNCLASSIFIED INFORMATION//BASIC

ASSIGNMENT LIST (ICS 204 WF)

CONTROLLED UNCLASSIFIED
INFORMATION//BASIC

1. Incident Name: SHELLY	2. Operational Period: Date From: 07/23/24 Date To: 07/24/24 Time From: 0700 Time To: 0700	3. Branch Division X B/C Page 1 of 3 Bravo
---	---	---

4. Operations Personnel:			
Operations Section Chief: T. Thane / E. Schwab / J. Topoleski / M. Todd (T)	Night Ops: C. Childers		
Branch Director: S. Santos (12 hr)	Branch Safety: M. Krissman		
Division/Group Supervisor: D. Havlina (12 hr)	Air Attack: I. Flattley / L. Murphy (T)		

5. Resources Assigned:		** Resources Below in Bold are 12 Hour **					
Resource Identifier	ALS	LWD	Leader	Personnel	Request #	Hours	Reporting Location
CST1 SKU 9263G (CDCR)			J. Hoffmann	36	C-20040	0700-1900	DP 7
CRW2 PVT C-20024		7/24	Z. Mooney	20	C-20024	0700-1900	DP 7
CRW2 PVT C-20025		7/24	L. Dishion	20	C-20025	0700-1900	DP 7
CRW2 PVT C-20026		7/24	D. Mcwillie	20	C-20026	0700-1900	DP 7
CRW2 PVT C-20029		7/24	L. Rasch	20	C-20029	0700-1900	DP 7
CRW2 PVT C-20030		7/24	R. Ivarra	20	C-20030	0700-1900	DP 7
EST3 MEU 9111C			S. Davis	17	E-20016	0700-0700	DP 7
DOZ3 PVT E-20075		7/28	K. Easley	2	E-20075	0700-1900	DP 7
DOZ2 PVT E-20077		7/28	D. Archibald	2	E-20077	0700-1900	DP 7
DOZ TBD						0700-1900	DP 7
DOZ TBD						0700-1900	DP 7
WTS2 JOHN SEMPLE 2 → 20/E NIGHT		8/4	B. Schmidt	1	E-88	0700-1900	DP 7 6 1900-0700
WTS1 PVT E-20010		7/27	J. Zuarbier	2	E-20010	0700-1900	DP 7
WTS2 PVT E-20011		7/27	K. Kelly	2	E-20011	0700-1900	DP 7
WTS1 PVT E-20012		7/27	D. Howell	2	E-20012	0700-1900	DP 7
WTS1 PVT E-20043		7/27	M. Johnson	2	E-20043	0700-1900	DP 7
WTS1 PVT E-20195		7/28	C. Culp	2	E-20195	0700-1900	DP 7
WTS1 PVT E-20196		7/28	J. Camacho	2	E-20196	0700-1900	DP 7

6. Work Assignments:
Mop up extent to achieve objectives.
Pull hose lays.
Back haul garbage, hose and water.
Patrol.

7. Special Instructions:

8. Communications								
Name	Ch	Function	Rx Freq	Rx Tone	Tx Freq	Tx Tone	Mode	Notes
NIFC C10	2	COMMAND	170.4125	(T3) 131.8	165.9625	(T3) 131.8	A	Quartz Lookout - All CMD repeaters linked
CDF T15	7	TACTICAL	151.1825	(T16) 192.8	151.1825	(T16) 192.8	A	
A/G TAC	14	A/G TAC	168.3750	0.0	168.3750	0.0	A	
CALCORD	15	TACTICAL	156.0750	(T6) 156.7	156.0750	(T6) 156.7	A	
AIRGUARD	16	EMERGENCY	168.6250	0.0	168.6250	(T1) 110.9	A	

9. Prepared by: Name:	B. Dameron / T. Lewis / B. Brown / M. Thomas S. Frank (T) / T. Hullquist (T)	RESL	Signature:
ICS 204	Date/Time: 7/22/2024 2200	Personnel Count: 170	

NIMS IAP

CONTROLLED UNCLASSIFIED INFORMATION//BASIC

ASSIGNMENT LIST (ICS 204 WF)

CONTROLLED UNCLASSIFIED
INFORMATION//BASIC

1. Incident Name: <p style="text-align: center; font-size: 1.2em;">SHELLY</p>	2. Operational Period: Date From: 07/23/24 Date To: 07/24/24 Time From: 0700 Time To: 0700	3. Branch Division <p style="text-align: center; font-size: 1.2em;">XXX F/G/M</p>
---	---	---

4. Operations Personnel:		Page 1 of 2 Foxtrot
Operations Section Chief: T. Thane / E. Schwab / J. Topoleski / M. Todd (T)	Night Ops: C. Childers	
Branch Director: R. Laeng (12 hr) / S. Chapman (12 hr) / M. Johnson (T) (12 hr)	Branch Safety:	
Division/Group Supervisor: D. Helgeson (12 hr) / B. Boatman (T)(12 hr)	Air Attack: I. Flattley / L. Murphy (T)	

5. Resources Assigned: J. McLarty ** Resources Below in Bold are 12 Hour **

Resource Identifier	ALS	LWD	Leader	Personnel	Request #	Hours	Reporting Location
CRW1 REDDING IHC		7/28	D. Mallia	25	C-82	0700-1900	DP5
CRW1 SALMON RIVER → DMOB		7/30	K. Correa	24	C-90	0700-1900	6 Mile
CST1 SCU 9163G (CAL FIRE, CNA)		7/31	E. Hoffman	32	C-20005	0700-1900	DP5
CR21 ARDEN SOLUTIONS		7/28	J. Harrison	20	C-30	0700-1900	DP5
WFM GRASSLAKE		7/29	W. Johnson	9	O-460	0700-1900	6 Mile
ENG3 J3 CONTRACTING 1		7/30	C. McAndrew	3	E-112	0700-1900	DP5
ENG3 SABINO		7/30	A. Beeley	3	E-114	0700-1900	DP5
ENG3 KS JOX E81		7/24	K. Neis	1	E-121	0700-1900	6 Mile
ENG3 PVT GREY WOLF E-122		7/25	T. Scott	3	E-122	0700-1900	DP5
WTS2 WARREN PARTRIDGE		8/14	F. Ponki	1	E-427	0700-1900	DP5
WTS2- PVT DAVID DUNLAP		7/31	L. Ornbaun	1	E-431	0700-1900	DP5
WTS1 PVT E-20246		7/27	T. Kelly	2	E-20246	0700-1900	DP5
WTS1 PVT E-20048		7/27	L. Grassman	2	E-20048	0700-1900	DP5
WTS2 PVT E-20318		7/12	C. Jenkins	2	E-20318	0700-1900	DP5
WTS2 PVT E-20321		8/1	P. Seaber	2	E-20321	0700-1900	DP5
FMOD PVT TAOFT		7/25 8/3	D. Smith	2	O-45	0700-1900	DP5
SKGN PVT DC FIRE → EXCESS		7/31	Z. Barnes	2	E-415	0700-1900	DP5
SKGN PVT SUTCH 2 → EXCESS		7/31	M. Sutch	2	E-425	0700-1900	DP5

6. Work Assignments:

Reinforce existing control lines from Patterson Creek to the PCT.
 Construct control lines as direct as possible utilizing natural barriers and cold trailing techniques.
 Mop up to the extent possible to prevent escape.
 Continue to patrol less active areas of the fire.
 Patrol.

7. Special Instructions:

8. Communications

Name	Ch	Function	Rx Freq	Rx Tone	Tx Freq	Tx Tone	Mode	Notes
NIFC C3	1	COMMAND	170.4250	(T3) 131.8	168.0750	(T3) 131.8	A	English Peak - All CMD repeaters linked
NIFC T1	6	TACTICAL	168.0500	(T3) 131.8	168.0500	(T3) 131.8	A	
A/G TAC	14	A/G TAC	168.3750	0.0	168.3750	0.0	A	
CALCORD	15	TACTICAL	156.0750	(T6) 156.7	156.0750	(T6) 156.7	A	
AIRGUARD	16	EMERGENCY	168.6250	0.0	168.6250	(T1) 110.9	A	

9. Prepared by: Name: B. Dameron / T. Lewis / B. Brown / M. Thomas
 S. Frank (T) / T. Hullquist (T) RESL

Signature:

ICS 204 Date/Time: 7/22/2024 2200 Personnel Count: 136

ASSIGNMENT LIST (ICS 204 WF)

CONTROLLED UNCLASSIFIED
INFORMATION//BASIC

1. Incident Name: <p style="text-align: center; font-size: 1.2em;">SHELLY</p>	2. Operational Period: Date From: 07/23/24 Date To: 07/24/24 Time From: 0700 Time To: 0700	3. Branch Division <p style="text-align: center; font-size: 1.2em;">XXX F/G/M</p>
4. Operations Personnel:		Page 2 of 2 Foxtrot

Operations Section Chief: T. Thane / E. Schwab / J. Topoleski / M. Todd (T)	Night Ops: C. Childers
Branch Director: R. Laeng (12 hr) / S. Chapman (12 hr) / M. Johnson (T) (12 hr)	Branch Safety:
Division/Group Supervisor: D. Helgeson (12 hr) / B. Boatman (T)(12 hr)	Air Attack: I. Flattley / L. Murphy (T)

5. Resources Assigned: *J. McCarty*** Resources Below in Bold are 12 Hour **

Resource Identifier	ALS	LWD	Leader	Personnel	Request #	Hours	Reporting Location
TFLD GERMAN		7/25	B. German	1	O-390	0700-1900	DP5
TFLD(T) PADILLA		8/2	D. Padilla	1	O-507	0700-1900	DP5
HEQB CASTILLO → <i>PSR 1</i>		7/23	D. Catillo	1	O-296	0700-1900	DP5
REMS 6	X	7/31	G. Schall	4	O-250	0700-1900	DP5
REMS 9	X	7/25	P. Fitch	4	O-20193	0700-1900	DP5
AMBO 4		7/22	C. Hollis	3	E-228	0700-1900	DP5
EMPF SINCLAIR	X	7/28	D. Sinclair	1	O-91	0700-1900	6 Mile
EMPF GARCIA	X	7/29	M. Garcia	1	O-195	0700-1900	DP5
EMPF HARDINA	X	7/23	B. Hardina	1	O-253	0700-1900	6 Mile
EMPF SELLERS	X	7/31	P. Sellers	1	O-268	0700-1900	DP5
EMPF SCHROTH	X	7/30	E. Schroth	1	O-270	0700-1900	DP5
EMPF(T) BROWN	X	7/23	M. Brown	1	O-314	0700-1900	DP5
EMTF MATLOCK → <i>DMOB</i>		7/30	J. Matlock	1	O-204	1900-0700	DP5
EMTF GENEVICZ		7/23	D. Genevicz	1	O-255	0700-1900	6 Mile
EMTF HARDIN		7/23	D. Hardin	1	O-271	0700-1900	DP5
EMPF PILLSWORTH	X	7/29	B. Pillsworth	1	O-519	0700-1900	DP5 <i>DUPLICATE ENTRY</i>
SOFR SMITH		7/29	J. Smith	1	O-215	0700-1900	DP5
REAF CLAIRMONT		7/31	S. Clairmont	1	O-498	0700-1900	DP5
<i>PACK ROOS ← T</i>		<i>7/24</i>	<i>T. ROOS</i>	<i>1</i>	<i>O-224</i>		
<i>PACK SPRIK ← T</i>		<i>7/24</i>	<i>J. SPRIK</i>	<i>1</i>	<i>O-413</i>		

6. Work Assignments: *PACK ANDREWS ← T*

Reinforce existing control lines from Patterson Creek to the PCT. *REMS 8 7/25 T. GALE 4 0-20192*
 Construct control lines as direct as possible utilizing natural barriers and cold trailing techniques.
 Mop up to the extent possible to prevent escape.
 Continue to patrol less active areas of the fire.
 Patrol.

7. Special Instructions:

8. Communications

Name	Ch	Function	Rx Freq	Rx Tone	Tx Freq	Tx Tone	Mode	Notes
NIFC C3	1	COMMAND	170.4250	(T3) 131.8	168.0750	(T3) 131.8	A	English Peak - All CMD repeaters linked
NIFC T1	6	TACTICAL	168.0500	(T3) 131.8	168.0500	(T3) 131.8	A	
A/G TAC	14	A/G TAC	168.3750	0.0	168.3750	0.0	A	
CALCORD	15	TACTICAL	156.0750	(T6) 156.7	156.0750	(T6) 156.7	A	
AIRGUARD	16	EMERGENCY	168.6250	0.0	168.6250	(T1) 110.9	A	

9. Prepared by Name: B. Dameron / T. Lewis / B. Brown / M. Thomas
 S. Frank (T) / T. Hullquist (T) RESL

Signature: *[Signature]* Personnel Count: 26

ICS 204 Date/Time: 7/22/2024 2200

NIMS IAP

CONTROLLED UNCLASSIFIED INFORMATION//BASIC

ASSIGNMENT LIST (ICS 204 WF)

CONTROLLED UNCLASSIFIED
INFORMATION//BASIC

1. Incident Name: <p style="text-align: center; font-weight: bold;">SHELLY</p>	2. Operational Period: Date From: 07/23/24 Date To: 07/24/24 Time From: 0700 Time To: 0700	3. Branch Division <p style="text-align: center; font-weight: bold;">XXX FSR I</p>
--	---	--

Page 1 of 1

4. Operations Personnel:	
Operations Section Chief: T. Thane / E. Schwab / J. Topoleski / M. Todd (T)	Night Ops: C. Childers
Branch Director: R. Laeng (12 hr) / S. Chapman (12 hr) / M. Johnson (T) (12 hr)	Branch Safety:
Division/Group Supervisor: G. Pelsma (12 hr)	Air Attack: I. Flattley / L. Murphy (T)

5. Resources Assigned:	** Resources Below in Bold are 12 Hour **						
Resource Identifier	ALS	LWD	Leader	Personnel	Request #	Hours	Reporting Location
CRW2 PVT C-20036		8/2	M. Contreras	20	C-20036	0700-1900	Etna ICP
CRW2 PVT C-20037		7/30	S. Bencomo	20	C-20037	0700-1900	Etna ICP
FMOD PVT O-20145		7/28	B. Schroeder	2	O-20145	0700-1900	Etna ICP
DOZ2 PVT E-20072		7/28	A. Melendez	2	E-20072	0700-1900	Etna ICP
DOZ2 PVT E-20032		7/27	M. Harkness	2	E-20032	0700-1900	Etna ICP
HEQB PALACIOS		7/23	D. Palacios	1	O-230	0700-1900	Etna ICP
HEQB(T) SMITH		7/26	B. Smith	1	O-380	0700-1900	Etna ICP
REMS 8 → F/M/G	X	7/25	T. Gale	4	O-20192	0700-1900	Etna ICP
AMBO 2 MTN MEDICS	X	8/1	K. Jensen	2	E-209	0700-1900	Etna ICP
EMPF LOOMIS	X	8/1	D. Loomis	1	O-527	0700-1900	Etna ICP
EMTF(T) WAGNER		7/29	A. Wagner	1	O-520	0700-1900	Etna ICP
REAF CANN		7/30	B. Cann	1	O-283	0700-1900	Etna ICP
REAF MUMA		8/3	R. Muma	1	O-556	0700-1900	Etna ICP
ARCH DICKS		7/25	A. Dicks	1	O-372	0700-1900	Etna ICP
ARCH JORGENSEN		7/27	J. Jorgensen	1	O-411	0700-1900	Etna ICP
CRW2 NORTH PACIFIC		7/25	C. PEREZ	20	C-72		
HEQB CASTILLO ← F/G/M		7/24	D. CASTILLO	1	O-296		
AMBO 10		8/1	C. POULSEN	1	E-434		

6. Work Assignments:

Fall Hazard Trees.
Identify sensitive sites.
Back haul garbage, hose, and water.

7. Special Instructions:

8. Communications

Name	Ch	Function	Rx Freq	Rx Tone	Tx Freq	Tx Tone	Mode	Notes
NIFC C11	3	COMMAND	170.6875	(T3) 131.8	166.5750	(T3) 131.8	A	Whiskey Butte - All CMD repeaters linked
NIFC T4	9	TACTICAL	172.5500	(T3) 131.8	162.1875	(T3) 131.8	A	
A/G TAC	14	A/G TAC	168.3750	0.0	168.3750	0.0	A	
CALCORD	15	TACTICAL	156.0750	(T6) 156.7	156.0750	(T6) 156.7	A	
AIRGUARD	16	EMERGENCY	168.6250	0.0	168.6250	(T1) 110.9	A	

9. Prepared by: Name: B. Dameron / T. Lewis / B. Brown / M. Thomas
S. Frank (T) / T. Hullquist (T) RESL

Signature: Personnel Count: 60

ICS 204 Date/Time: 7/22/2024 2200

NIMS IAP

CONTROLLED UNCLASSIFIED INFORMATION//BASIC

ASSIGNMENT LIST (ICS 204 WF)

CONTROLLED UNCLASSIFIED
INFORMATION//BASIC

1. Incident Name: <p style="text-align: center; font-size: 1.2em;">SHELLY</p>		2. Operational Period: Date From: 07/23/24 Date To: 07/24/24 Time From: 0700 Time To: 0700				3. Branch Division Suppression Repair FSR North		
4. Operations Personnel:		Operations Section Chief: T. Thane / E. Schwab / J. Topoleski / M. Todd (T)		Night Ops: C. Childers		Page 2 of 3		
		Branch Director: T. Pederson (12 hr) / S. Wilson (12 hr)(Dep.) / S. Pindell (12 hr)		Branch Safety:				
		Division/Group Supervisor: J. Karp (12 hr)		Air Attack: I. Flattley / L. Murphy (T)				
5. Resources Assigned:		** Resources Below in Bold are 12 Hour **						
Resource Identifier	ALS	LWD	Leader	Personnel	Request #	Hours	Reporting Location	
DO22 PVT E-20080		7/28	M. Henson	2	E-20080	0700-1900	DP 9	
WTS1 PVT E-20047			H. Hanna	2	E-20047	0700-1900	DP 9	
WTS1 PVT E-20050		7/27	A. Bennett	2	E-20050	0700-1900	DP 9	
WTS1 PVT E-20239		7/29	W. Evanson	1	E-20239	0700-1900	DP 9	
WTS1 PVT E-20240		7/29	W. Reali	1	E-20240	0700-1900	DP 9	
WTS1 PVT E-20242		7/29	V. Reali	2	E-20242	0700-1900	DP 9	
FMOD PVT GOD & COUNTRY 1		8/6	T. Barney	2	O-162	0700-1900	DP 9	
FMOD PVT O-20223		7/30	T. Nealy	2	O-20223	0700-1900	DP 9	
MAST PVT E-20260		7/30	J. Hudman	1	E-20260	0700-1900	DP 9	
GRD2 PVT E-20275		7/30	J. Simonis	1	E-20275	0700-1900	DP 9	
GRD TBD						0700-1900	DP 9	
EXC1 PVT HACKER CONST		8/4	J. Wood	2	E-438	0700-1900	DP 9	
EXC4 PVT E-20262			C. Farrell	1	E-20262	0700-1900	DP 9	
EXC1 PVT E-20381 NEU 2349			D. Rhone		E-20381	0700-1900	DP 9	
CHP2 PVT E-20296		7/30	A. Larios	2	E-20296	0700-1900	DP 9	
HEQB SASSEN → FSR EAST		8/2	T. Sassen	1	O-20036	0700-1900	DP 9	
HEQB(T) MINER		7/29	R. Miner	1	O-20194	0700-1900	DP 9	
HEQB TIDWELL NO SHOW		7/24	M. Tidwell	1	O-298	0700-1900	DP 9	
6. Work Assignments: Pull hose lays. Back haul garbage, hose, and water. Continue to implement Fire Suppression Repair Plan.								
7. Special Instructions:								
8. Communications								
Name	Ch	Function	Rx Freq	Rx Tone	Tx Freq	Tx Tone	Mode	Notes
NIFC C11	3	COMMAND	170.6875	(T3) 131.8	166.5750	(T3) 131.8	A	Whiskey Butte - All CMD repeaters linked
NIFC T6	11	TACTICAL	168.2500	(T3) 131.8	168.2500	(T3) 131.8	A	
A/G TAC	14	A/G TAC	168.3750	0.0	168.3750	0.0	A	
CALCORD	15	TACTICAL	156.0750	(T6) 156.7	156.0750	(T6) 156.7	A	
AIRGUARD	16	EMERGENCY	168.6250	0.0	168.6250	(T1) 110.9	A	
9. Prepared by: Name:		B. Dameron / T. Lewis / B. Brown / M. Thomas S. Frank (T) / T. Hullquist (T)			RESL		Signature:	
ICS 204		Date/Time: 7/22/2024 2200				Personnel Count: 24		

NIMS IAP

CONTROLLED UNCLASSIFIED INFORMATION//BASIC

ASSIGNMENT LIST (ICS 204 WF)

CONTROLLED UNCLASSIFIED
INFORMATION//BASIC

1. Incident Name: SHELLY		2. Operational Period: Date From: 07/23/24 Date To: 07/24/24 Time From: 0700 Time To: 0700				3. Branch Suppression Repair		Division FSR North	
Page 3 of 3									
4. Operations Personnel:									
Operations Section Chief: T. Thane / E. Schwab / J. Topoleski / M. Todd (T)					Night Ops: C. Childers				
Branch Director: T. Pederson (12 hr) / S. Wilson (12 hr)(Dep.) / S. Pindell (12 hr)					Branch Safety:				
Division/Group Supervisor: J. Karp (12 hr)					Air Attack: I. Flattley / L. Murphy (T)				
5. Resources Assigned:									
** Resources Below in Bold are 12 Hour **									
Resource Identifier	ALS	LWD	Leader	Personnel	Request #	Hours	Reporting Location		
HEQB(T) MAYFIELD NO SHOW		7/25	G. Mayfield	1	O-299	0700-1900	DP 9		
FOBS(T) RAVENSCROFT		7/29	J. Ravenscroft	1	O-20160	0700-1900	DP 9		
FSRS COONEN			N. Coonen	1	O-20384	0700-1900	DP 9		
EMPF BLIVEN	X	8/5	D. BLiven	1	O-524	0700-1900	DP 9		
EMTF CARNEY		8/5	S. Carney	1	O-521	0700-1900	DP 9		
DOZ2 PVT JIM JOHNSON		7/22	V. HORNE	2	E-214				
LOG1 PVT LASSEN EQ			S. LASSEN		E-20419				
CHP1 PVT G.E FORESTRY			E. RANGEL	4	E-389				
CHP2 PVT NORTH PACIFIC		2	T. KING	3	E-391			NO SHOW	
HEGB BETTS		7/28	B. BETTS	1	O-20143				
6. Work Assignments:									
Pull hose lays. Back haul garbage, hose, and water. Continue to implement Fire Suppression Repair Plan.									
7. Special Instructions:									
8. Communications									
Name	Ch	Function	Rx Freq	Rx Tone	Tx Freq	Tx Tone	Mode	Notes	
NIFC C11	3	COMMAND	170.6875	(T3) 131.8	166.5750	(T3) 131.8	A	Whiskey Butte - All CMD repeaters linked	
NIFC T6	11	TACTICAL	168.2500	(T3) 131.8	168.2500	(T3) 131.8	A		
A/G TAC	14	A/G TAC	168.3750	0.0	168.3750	0.0	A		
CALCORD	15	TACTICAL	156.0750	(T6) 156.7	156.0750	(T6) 156.7	A		
AIRGUARD	16	EMERGENCY	168.6250	0.0	168.6250	(T1) 110.9	A		
9. Prepared by: Name:									
B. Dameron / T. Lewis / B. Brown / M. Thomas					RESL				
S. Frank (T) / T. Hullquist (T)					Signature:				
ICS 204		Date/Time: 7/22/2024 2200			Personnel Count: 5				

ASSIGNMENT LIST (ICS 204 WF)

CONTROLLED UNCLASSIFIED
INFORMATION//BASIC

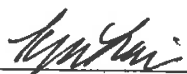
1. Incident Name: SHELLY		2. Operational Period: Date From: 07/23/24 Date To: 07/24/24 Time From: 0700 Time To: 0700				3. Branch Suppression Repair		Division FSR South	
4. Operations Personnel:									
Operations Section Chief: T. Thane / E. Schwab / J. Topoleski / M. Todd (T)					Night Ops: C. Childers				
Branch Director: T. Pederson (12 hr) / S. Wilson (12 hr)(Dep.) / S. Pindell (12 hr)					Branch Safety:				
Division/Group Supervisor: J. McCarty (12 hr) / J. Wildt (T)(12 hr)					Air Attack: I. Flattley / L. Murphy (T)				
5. Resources Assigned:									
** Resources Below in Bold are 12 Hour **									
Resource Identifier	ALS	LWD	Leader	Personnel	Request #	Hours	Reporting Location		
CRW2 OC 24		7/25	E. Vuolo	21	C-75	0700-1900	DP 5		
CRW2 PACIFIC OASIS 1		7/28	J. Sprigs	20	C-77	0700-1900	DP 5		
CRW2 PACIFIC OASIS 190		7/28	J. Maza	20	C-78	0700-1900	DP 5		
CRW2 MOUNTAINEER → FSR EAST		7/28	C. Arevalo	20	C-80	0700-1900	DP 5		
SHELLY T/F 1							DP 5		
TFLD COOK		7/29	A. Cook	1	O-51	0700-1900	DP 5		
TFLD(T) CORBIN		7/25	T. Corbin	1	O-323	0700-1900	DP 5		
ENG3 J3 CONTRACTING 2 → DMOB		7/23	W. Wallace	3	E-113	0700-1900	DP 5		
ENG3 STEAMBOAT SPRINGS → DMOB		7/22	White	4	E-117	0700-1900	DP 5		
ENG6 BUTTE 1 → DMOB		7/22	S. Secconb	2	E-160	0700-1900	DP 5		
ENG6 GRAND VALLEY 31 → DMOB		7/23	J. Oldright	3	E-165	0700-1900	DP 5		
WTS2 CATTLE LACK 1 → DMOB		7/22	C. Enlow	1	E-90	0700-1900	DP 5		
DO22 PVT EVANS BROTHERS		7/23	E. Patton	2	E-87	0700-1900	DP 5		
DO22 PVT TYSON MORGAN		8/3	T. Morgan	2	E-215	0700-1900	DP 5		
DO22 PVT E-20030		7/27	R. Welch	2	E-20030	0700-1900	DP 5		
DO22 PVT E-20031 → FSR EAST			T. Zimmerman	1	E-20031	0700-1900	DP 5		
DO22 PVT E-20061		7/29	R. Carlton	2	E-20061	0700-1900	DP 5		
DO22 PVT E-20062		7/29	J. Montz	2	E-20062	0700-1900	DP 5		
6. Work Assignments:									
Identify fire suppression repair needs. Implement Fire Suppression Repair Plan. Backhaul all excess hose, appliances, and trash.									
7. Special Instructions:									
8. Communications									
Name	Ch	Function	Rx Freq	Rx Tone	Tx Freq	Tx Tone	Mode	Notes	
NIFC C11	3	COMMAND	170.6875	(T3) 131.8	166.5750	(T3) 131.8	A	Whiskey Butte - All CMD repeaters linked	
VTAC 12	12	TACTICAL	154.4525	(T3) 131.8	154.4525	(T3) 131.8	A		
A/G TAC	14	A/G TAC	168.3750	0.0	168.3750	0.0	A		
CALCORD	15	TACTICAL	156.0750	(T6) 156.7	156.0750	(T6) 156.7	A		
AIRGUARD	16	EMERGENCY	168.6250	0.0	168.6250	(T1) 110.9	A		
9. Prepared by: Name:									
B. Dameron / T. Lewis / B. Brown / M. Thomas					RESL				
S. Frank (T) / T. Hullquist (T)					Signature:				
ICS 204		Date/Time: 7/22/2024 2200			Personnel Count: 107				

NIMS IAP

CONTROLLED UNCLASSIFIED INFORMATION//BASIC

ASSIGNMENT LIST (ICS 204 WF)

CONTROLLED UNCLASSIFIED
INFORMATION/BASIC

1. Incident Name:		2. Operational Period:				3. Branch		Division	
SHELLY		Date From: 07/23/24		Date To: 07/24/24		Suppression Repair		FSR South	
		Time From: 0700		Time To: 0700					
4. Operations Personnel:									
Operations Section Chief: T. Thane / E. Schwab / J. Topoleski / M. Todd (T)				Night Ops: C. Childers					
Branch Director: T. Pederson (12 hr) / S. Wilson (12 hr)(Dep.) / S. Pindell (12 hr)				Branch Safety:					
Division/Group Supervisor: J. McCarty (12 hr) / J. Wildt (T)(12 hr)				Air Attack: I. Flattley / L. Murphy (T)					
5. Resources Assigned:			** Resources Below in Bold are 12 Hour **						
Resource Identifier	ALS	LWD	Leader	Personnel	Request #	Hours	Reporting Location		
DO22 PVT E-20064		7/29	C. Klauer	2	E-20064	0700-1900	DP 5		
WTS1 PVT E-20046		7/27	F. Hurlimann	2	E-20046	0700-1900	DP 5		
WTS1 PVT E-20192		7/28	S. Scheeps	2	E-20192	0700-1900	DP 5		
WTS1 PVT E-20193		7/28	L. Lear	2	E-20193	0700-1900	DP 5		
WTS1 PVT E-20194		7/28	S. Clark	2	E-20194	0700-1900	DP 5		
WTS1 PVT E-20198		7/28	H. Sprulock	2	E-20198	0700-1900	DP 5		
WTS1 PVT E-20199		7/28	B. Mong	2	E-20199	0700-1900	DP 5		
WTS1 PVT E-20243		7/29	N. Cusalich	2	E-20243	0700-1900	DP 5		
WTS2 PVT HEATHER M HART		8/1	J. Roguemore	1	E-428	0700-1900	DP 5		
GRD2 PVT E-20273			J. White	1	E-20273	0700-1900	DP 5		
SKID PVT E-20112		7/28	S. Lassen	2	E-20112	0700-1900	DP 5		
SKID PVT E-20409					E-20409	0700-1900	DP 5		
SKID PVT E-20410			J. Ainger	2	E-20410	0700-1900	DP 5		
EXC1 PVT AXSUS ENTERPRISES		8/2	R. Scroeder	2	E-436	0700-1900	DP 5		
EXC1 PVT FIGAS E-454		8/3	B. Figas	1	E-454	0700-1900	DP 5		
EXC2 PVT E-20383					E-20383	0700-1900	DP 5		
EXC2 PVT E-20384		8/8	J. Gowen	2	E-20384	0700-1900	DP 5		
EXC2 PVT E-20385		8/8	B. Fulner	2	E-20385	0700-1900	DP 5		
6. Work Assignments:									
Identify fire suppression repair needs. Implement Fire Suppression Repair Plan. Backhaul all excess hose, appliances, and trash.									
7. Special Instructions:									
8. Communications									
Name	Ch	Function	Rx Freq	Rx Tone	Tx Freq	Tx Tone	Mode	Notes	
NIFC C11	3	COMMAND	170.6875	(T3) 131.8	166.5750	(T3) 131.8	A	Whiskey Butte - All CMD repeaters linked	
VTAC 12	12	TACTICAL	154.4525	(T3) 131.8	154.4525	(T3) 131.8	A		
A/G TAC	14	A/G TAC	168.3750	0.0	168.3750	0.0	A		
CALCORD	15	TACTICAL	156.0750	(T6) 156.7	156.0750	(T6) 156.7	A		
AIRGUARD	16	EMERGENCY	168.6250	0.0	168.6250	(T1) 110.9	A		
9. Prepared by: Name:									
B. Dameron / T. Lewis / B. Brown / M. Thomas				RESL			Signature: 		
S. Frank (T) / T. Hullquist (T)									
ICS 204		Date/Time: 7/22/2024 2200				Personnel Count: 29			

NIMS IAP

CONTROLLED UNCLASSIFIED INFORMATION/BASIC

ASSIGNMENT LIST (ICS 204 WF)

CONTROLLED UNCLASSIFIED
INFORMATION//BASIC

1. Incident Name: <p style="text-align: center;">SHELLY</p>	2. Operational Period: Date From: 07/23/24 Date To: 07/24/24 Time From: 0700 Time To: 0700	3. Branch Division Suppression FSR South Repair
--	---	--

4. Operations Personnel:		
Operations Section Chief: T. Thane / E. Schwab / J. Topoleski / M. Todd (T)	Night Ops: C. Childers	Page 3 of 3
Branch Director: T. Pederson (12 hr) / S. Wilson (12 hr)(Dep.) / S. Pindell (12 hr)	Branch Safety:	
Division/Group Supervisor: J. McCarty (12 hr) / J. Wildt (T)(12 hr)	Air Attack: I. Flattley / L. Murphy (T)	

5. Resources Assigned:	** Resources Below in Bold are 12 Hour **						
Resource Identifier	ALS	LWD	Leader	Personnel	Request #	Hours	Reporting Location
EXC2 PVT E-20386			A. Bushey	1	E-20386	0700-1900	DP 5
EXC2 PVT E-20387		8/8	W. Dunlap	2	E-20387	0700-1900	DP 5
EXC2 PVT E-20399			H. Miller	1	E-20399	0700-1900	DP 5
EXC4 PVT E-20263		7/30	C. Walkup	1	E-20263	0700-1900	DP 5
CHP1 PVT FIGAS E-453		8/3	B. Figas	1	E-453	0700-1900	DP 5
CHP1 PVT E-20380		8/7	H. Harnin	1	E-20380	0700-1900	DP 5
TUBG PVT AXSUS ENTERPRISES		8/2	L. Lister	2	E-435	0700-1900	DP 5
HEQB EDMONDSON		7/24	A. Edmondson	1	O-229	0700-1900	DP 5
HEQB ADAMS		7/29	T. Adams	1	O-20138	0700-1900	DP 5
HEQB BETTS		7/28	B. Betts	1	O-20143	0700-1900	DP 5
HEQB DWYER		8/5	W. Dwyer	1	O-20352	0700-1900	DP 5
HEQB(T) DEXHEIMER		7/31	F. Dexheimer	1	O-496	0700-1900	DP 5
HEQB(T) DOYLE		8/3	R. Doyle	1	O-533	0700-1900	DP 5
HEQB(T) MCCONNEL		8/5	B. Mcconnel	1	O-20354	0700-1900	DP 5
THSP YARRUSO		8/3	A. Yarruso	1	O-20287	0700-1900	DP 5
FSRS POBURKO		8/8	J. Poburko	1	O-20406	0700-1900	DP 5
EMPF PONCE	X	8/5	G. Ponce	1	O-523	0700-1900	DP 5
EMPF LLAMAS	X	8/5	R. Llamas	1	O-526	0700-1900	DP 5
SOFR(T) MESENBURG		7/27	E. Meseburg	1	O-20261	0700-1900	DP 5

6. Work Assignments:
 Identify fire suppression repair needs.
 Implement Fire Suppression Repair Plan.
 Backhaul all excess hose, appliances, and trash.

7. Special Instructions:

8. Communications								
Name	Ch	Function	Rx Freq	Rx Tone	Tx Freq	Tx Tone	Mode	Notes
NIFC C11	3	COMMAND	170.6875	(T3) 131.8	166.5750	(T3) 131.8	A	Whiskey Butte - All CMD repeaters linked
VTAC 12	12	TACTICAL	154.4525	(T3) 131.8	154.4525	(T3) 131.8	A	
A/G TAC	14	A/G TAC	168.3750	0.0	168.3750	0.0	A	
CALCORD	15	TACTICAL	156.0750	(T6) 156.7	156.0750	(T6) 156.7	A	
AIRGUARD	16	EMERGENCY	168.6250	0.0	168.6250	(T1) 110.9	A	

9. Prepared by: Name:	B. Dameron / T. Lewis / B. Brown / M. Thomas S. Frank (T) / T. Hullquist (T)	RESL	Signature:
ICS 204	Date/Time: 7/22/2024 2200	Personnel Count: 20	

ASSIGNMENT LIST (ICS 204 WF)

CONTROLLED UNCLASSIFIED
INFORMATION//BASIC

1. Incident Name:	2. Operational Period:	3. Branch	Division
SHELLY	Date From: 07/23/24 Date To: 07/24/24 Time From: 0700 Time To: 0700	Suppression Repair	FSR East
4. Operations Personnel:		Page 1 of 2	

Operations Section Chief: T. Thane / E. Schwab / J. Topoleski / M. Todd (T)	Night Ops: C. Childers
Branch Director: T. Pederson (12 hr) / S. Wilson (12 hr)(Dep.) / S. Pindell (12 hr)	Branch Safety:
Division/Group Supervisor: J. Duncan (12 hr) / E. Mattson (T)(12 hr)	Air Attack: I. Flattley / L. Murphy (T)

5. Resources Assigned:	** Resources Below in Bold are 12 Hour **						
Resource Identifier	ALS	LWD	Leader	Personnel	Request #	Hours	Reporting Location
CRW2 PVT C-20031		7/24	G. Anderson	20	C-20031	0700-1900	DP 6
CRW2 PVT C-20034		7/29	C. Rodriguez	20	C-20034	0700-1900	DP 6
CRW2 PVT C-20035		8/2	F. Cisnero	20	C-20035	0700-1900	DP 6
ENG6 MES 6217		7/27	S. Nichols	4	E-150	0700-1900	DP 6
ENG6 MADISON FD B61		8/6 7/23	R. Ricks	4	E-151	0700-1900	DP 6
ENG6 NATIONAL FIRE		7/23	O. Arenas	3	E-153	0700-1900	DP 6
ENG6 LCFA WILDLAND 741 → D I E N I G I T		7/23	D. Brown	3	E-163	0700-1900	DP 6 1900-0700
DOZ2 PVT LET-ER-BUCK 1 → D M O I S		7/28	T. Cummings	1	E-76	0700-1900	DP 6
DOZ2 PVT JOHNSON		8/2	S. Lassen	2	E-78	0700-1900	DP 6
DOZ2 PVT E-20058		7/29	A. Wunsch	2	E-20058	0700-1900	DP 6
DOZ2 PVT E-20059		7/29	T. Wilson	2	E-20059	0700-1900	DP 6
DOZ2 PVT E-20073		7/28	C. Skinner	2	E-20073	0700-1900	DP 6
DOZ2 PVT E-20110		7/28	M. Gooden		E-20110	0700-1900	DP 6
WTS2 WHITE		7/20 8/4	Gomes WHITE	2	E-48	0700-1900	DP 6
WTS2 PVT E-20248			T. Hyberg	2	E-20248	0700-1900	DP 6
WTS1 PVT E-20319		8/1	D. Harner	2	E-20319	0700-1900	DP 6
FMOD PVT O-20222		7/30	N. Crawford	2	O-20222	0700-1900	DP 6
MAST PVT SMOKEY MTN		7/31	T. Hill	2	E-59	0700-1900	DP 6

6. Work Assignments:
Identify fire suppression repair needs.
Implement Fire Suppression Repair Plan.

7. Special Instructions:

8. Communications

Name	Ch	Function	Rx Freq	Rx Tone	Tx Freq	Tx Tone	Mode	Notes
NIFC C11	3	COMMAND	170.6875	(T3) 131.8	166.5750	(T3) 131.8	A	Whiskey Butte - All CMD repeaters linked
NIFC T5	10	TACTICAL	166.7750	(T3) 131.8	166.7750	(T3) 131.8	A	
A/G TAC	14	A/G TAC	168.3750	0.0	168.3750	0.0	A	
CALCORD	15	TACTICAL	156.0750	(T6) 156.7	156.0750	(T6) 156.7	A	
AIRGUARD	16	EMERGENCY	168.6250	0.0	168.6250	(T1) 110.9	A	

9. Prepared by: Name: B. Dameron / T. Lewis / B. Brown / M. Thomas
S. Frank (T) / T. Hullquist (T) RESL

Signature:

ICS 204 Date/Time: 7/22/2024 2200 Personnel Count: 93

ASSIGNMENT LIST (ICS 204 WF)

CONTROLLED UNCLASSIFIED
INFORMATION/BASIC

1. Incident Name: <p style="text-align: center; font-weight: bold;">SHELLY</p>	2. Operational Period: Date From: 07/23/24 Date To: 07/24/24 Time From: 0700 Time To: 0700	3. Branch Division <p style="text-align: center; font-weight: bold;">Suppression Repair FSR East</p>
4. Operations Personnel:		Page 2 of 2

Operations Section Chief: T. Thane / E. Schwab / J. Topoleski / M. Todd (T)	Night Ops: C. Childers
Branch Director: T. Pederson (12 hr) / S. Wilson (12 hr)(Dep.) / S. Pindell (12 hr)	Branch Safety:
Division/Group Supervisor: J. Duncan (12 hr) / E. Mattson (T)(12 hr)	Air Attack: I. Flattley / L. Murphy (T)

5. Resources Assigned:		** Resources Below in Bold are 12 Hour **					
Resource Identifier	ALS	LWD	Leader	Personnel	Request #	Hours	Reporting Location
MAST PVT JIM JOHNSON		7/24	J. Downing	3	E-289	0700-1900	DP 6
EXC2 PVT E-20276			D. Stoddard	2	E-20276	0700-1900	DP 6
EXC2 PVT E-20277		7/30	S. Clark	1	E-20277	0700-1900	DP 6
EXC2 PVT E-20398			D. Anderews	1	E-20398	0700-1900	DP 6
EXC2 PVT E-20401			T. Waterman	1	E-20401	0700-1900	DP 6
CHP1 PVT GE FORESTRY → FSR NORTH		7/28	E. Rangel	4	E-389	0700-1900	DP 6
CHP2 PVT E-20294			D. Lange	2	E-20294	0700-1900	DP 6
HEQB ULVEVADET		7/31	N. Ulvevadet	1	O-20249	0700-1900	DP 6
HEQB(T) KINDNESS		7/24	7/31 A. Kindness	1	O-317	0700-1900	DP 6
FSRS DENMAN			D. Denman	1	O-20206	0700-1900	DP 6
EMPF LOPEZ	X	7/26	7/24 M. Lopez	1	O-518	0700-1900	DP 6
EMPF PILLSWORTH	X	7/29	7/28 B. Pillsworth	1	O-519	0700-1900	DP 6
CRW2 MOUNTAINVIEW ← FSR SOUTH			7/28 C. ARZUMIO			20 C-80	
DOZ2 PVT E-20031 ← FSR SOUTH			J. ZIMMERMAN	1	E-20031		
HEQB SASSEN ← FSR NORTH			8/2 T. SASSEN	1	O-20036		

6. Work Assignments:
Identify fire suppression repair needs.
Implement Fire Suppression Repair Plan.

7. Special Instructions:

8. Communications

Name	Ch	Function	Rx Freq	Rx Tone	Tx Freq	Tx Tone	Mode	Notes
NIFC C11	3	COMMAND	170.6875	(T3) 131.8	166.5750	(T3) 131.8	A	Whiskey Butte - All CMD repeaters linked
NIFC T5	10	TACTICAL	166.7750	(T3) 131.8	166.7750	(T3) 131.8	A	
A/G TAC	14	A/G TAC	168.3750	0.0	168.3750	0.0	A	
CALCORD	15	TACTICAL	156.0750	(T6) 156.7	156.0750	(T6) 156.7	A	
AIRGUARD	16	EMERGENCY	168.6250	0.0	168.6250	(T1) 110.9	A	

9. Prepared by: Name: B. Dameron / T. Lewis / B. Brown / M. Thomas
S. Frank (T) / T. Hullquist (T) RESL

Signature:

ICS 204 Date/Time: 7/22/2024 2200 Personnel Count: 19

NIMS IAP

CONTROLLED UNCLASSIFIED INFORMATION/BASIC

AIR OPERATIONS SUMMARY ICS-220

Incident Name / Number				Sunrise		Sunset		Airport		Pumpkin		Time Prepared		Date Prepared		Prepared By	
SHELLY				0558		2037		A30		2030		1600		7/22/2024		Cole Wallace	
General Remarks, Safety Notes, Hazards, Air Operations Special Equipment, etc. *All Aircraft orders go to Scott Valley Helibase *Be aware of retardant avoidance areas, 300ft away from waterways and bodies of water. *Sanitize Buckets before changing water sources. *Clear drop area/line before initiating drop sequence. *Be cognizant of all overhead and environmental hazards while working with Aircraft. *All GPS is to be collected in DD* MM.MMM* *ALL water and retardant picks/drops need to be tracked and recorded *Aviation daily cost to: Scottvalleyhb2023@gmail.com *Siskiyou County Airport temporary FFA tower in place for all air traffic control.				Helibase Information Scott Valley Helibase A30 41 33.395 N 122 51.208 W 530-468-1294 Siskiyou Helibase SIY 41 46.530 N 122 28.330 W 530-520-6479		TFR Information TFR Number 4/4675 Altitude 11,000 MSL Polygon: 41 29.4079 123 01.9938 TFR Frequency 120.525 24hours		Medivac Ship Information 24hr Hoist Call Sign- G841 Aircraft Model- Airforce Pave Hawk Location- Airport-Dunsmuir-Mott (106) Request Procedure for This Aircraft: Communications/Dispatch on Command,		Operational Period - Date 7/23/2024		Operational Period - Time 0800-2030					
Incident Frequencies	RX	Tone	TX	Tone	AM/FM	Position	Name	Phone	Location/Equipment								
TFR Victor	120.5250		120.5250		AM	AOBD	Tom Swanson	805-903-3495	IMT6								
Rotor Victor	132.5750		132.5750		AM	AOBD	Rocco Terracciano	951-333-7458	IMT1								
Briefing Victor	125.1250		125.1250		AM	AOBD- T	Cole Wallace	530-551-1311	IMT1								
AirTactics	164.7750		164.7750		FM	ASGS-T	Kevin Christy/Team 1 @ SVHB	310-422-3832	IMT1								
A/G CMD	166.6000		166.6000		FM	ASGS	Josh Faulkner/Team 6 @ SIY	530-356-1351									
A/G TAC	168.3750		168.3750		FM	HEBM-SVHB	Lee Stewart @ SVHB	775-220-6364	Scott Valley Airport								
TOLC	169.2000		169.2000		FM	HEBM-SIY	Joe Carstensen @ SIY	530-520-6479	Siskiyou Airport								
DECK	163.1000		163.1000		FM	HLCO	Brad Corbin	661-965-8680	Scott Valley Airport								
AIR GUARD	168.6250	110.9	168.6250	110.9	FM	HLCO	Alex Lujan	530-925-0934	Scott Valley Airport								
CALCORD	156.0750	156.7	156.0750	156.7	FM	ATGS	Jeff Keiser	530-643-2259	Siskiyou Airport								
Siskiyou Tower A-130	128.7750		128.7750		AM	ATBM	Matt Libby	530-643-9887	SIY Tanker Base								
Scott Valley CTAF/Unicom	122.8000		122.8000		AM	UR-31	Jake Burgess	530-598-2611									
National Flight Following	168.6500	110.9	168.6500	110.9	FM	G841	James Beeson	510-755-8571									
					FM		Yreka Dispatch Aircraft Desk	530-842-7066									
HELICOPTERS - Scott Valley Helibase																	
FAA #	TYPE	Make/Model	Helibase	Start	Avail	Remarks	FAA #	TYPE	Make/Model	Airport	Start	Avail	Remarks				
503	3	AS350B3E	SVHB	0800	0830	Recon, Bux, PSD, IA	N181EH	3	AS350B3E	SIY	0800	0830	HLCO/A-265 (State)				
502	3	AS350B3E	SVHB	0800	0830	Recon, Bux, PSD, IA											
532	2	Bell 205A++	SVHB	0800	0830	Bux, Troop transport, Recon											
OHX	1	Knax	SVHB	0800	0830	Bux, Cargo											
5TH	1	Knax	SVHB	0800	0830	Bux, Cargo											
							N517MB	1	UH-60	SIY	0800	0830	Bucket/ A-269 (State)				
							N948CH	1	CH-47	SIY	0800	0830	Ranked / A-255				
							G841	1	UH-60	106	0800	0830	24 hour hoist				
FIXED WING AA/HLCO																	
FAA #	Call Sign	Make/Model	Base	Start	Avail	Remarks	FAA #	TYPE	Make/Model	Airport	Start	Stop	Remarks				
N32WS	AA05	AC690	SIY	0800	0830	Air Attack	G841	1	HH-60G	106	24hr	24hr	ALS/NVG/Hoist-200ft Cable				
N181EH	1EH	AS350	SIY	0800	0830	HLCO	C902	2	B205 A++	Weaverville	0800	2030	BLS/Assigned to Hill/265ft Cable				
N14HX	507	Bell 407	A30	0800	0830	out of service	H14/H16	3	ASB350B3E	Redding	0600	0230	ALS/NVG/Hoist 165ft Cable				
							USCG	1	UH60	McKinleyville	24hr	24hr	HUU Fortuna ECC 707-726-1280				

Incident:
Shelly CA-KNF-005159

Date:
7-23-24 thru 7-24-24

Operational Period:
0700-0700



SAFETY MESSAGE

Fire fighter safety comes first on every fire, every time



USE **L**OOKOUTS, **C**OMMUNICATIONS, **E**SCAPE ROUTES, **S**AFETY ZONES

Transportation issues:

- Drive extremely slow and prepare for oncoming traffic.
- Headlights on; creep around blind curves and corners.
- At night when parked, turn off headlights for oncoming traffic.
- Be mindful of heavy equipment working in fire suppression repair areas. Drive slow and don't pass without operators permission.

Fireline:

- Mop up and suppression repair operations can be just as hazardous as active firefighting. Scout your work area for fire weekend trees, stump holes/ash pits and other hazards as you venture deeper into burned areas.
- Remember, One of the common denominators of Fire Behavior on Tragedy Fires is "On...deceptively quiet areas of large fires." IRPG Pg 3.
- Very steep terrain in Div A and T. Watch footing and choose path carefully.
- Be familiar with Med plan. Don't commit to ground you can't get someone out of.

Fire Behavior:

- Although there is little fire activity currently, there is still plenty of fuel and the weather forecast is predicted to heat up in the coming days. Stay alert.
- Take weather regularly and report to others on the Division. Notice and communicate trends.
- Remember, base actions on expected weather and fire behavior.

TEAM SAFETY OFFICERS: John Nickey SOFC, Doug McKelvey SOF1, David Morrison SOF1, James Allen SOF1(t)

INCIDENT RADIO COMMUNICATIONS PLAN (ICS 205)		Incident Name		Date/Time Prepared		Operational Period Date/Time					
INCIDENT RADIO COMMUNICATIONS PLAN (ICS 205)		SHELLY SH717 Z1		7/22/2024 1400		7/23/2024 to 7/24/2024 0700 to 0700					
CONTROLLED CLASSIFIED INFORMATION/BASIC											
Utilization of any frequency other than those listed on this form are prohibited, subject to fines by the FCC and demobilization from the incident.											
Zn Ch	Function	Channel Name/Trunked Radio System Talkgroup	Assignment	RX Freq N or W	RX Tone/NAC	TX Freq N or W	Tx Tone/NAC	Dev	Pwr	Mode A, D or M	Remarks
1	COMMAND	NIFC C3	ALL DIVISIONS	170.4250	Tone 3 131.8	168.0750	Tone 3 131.8	N	H	A	ENGLISH PEAK - ALL CMD REPEATERS LINKED
2	COMMAND	NIFC C10	ALL DIVISIONS	170.4125	Tone 3 131.8	165.9625	Tone 3 131.8	N	H	A	QUARTZ LOOKOUT - ALL CMD REPEATERS LINKED
3	COMMAND	NIFC C11	ALL DIVISIONS	170.6875	Tone 3 131.8	166.5750	Tone 3 131.8	N	H	A	WHISKEY BUTTE - ALL CMD REPEATERS LINKED
4	COMMAND	NIFC C12	ALL DIVISIONS	173.0375	Tone 3 131.8	167.3250	Tone 3 131.8	N	H	A	HELISPOT 5 - ALL CMD REPEATERS LINKED
5	COMMAND	NIFC C20	ALL DIVISIONS	172.5500	Tone 3 131.8	162.1875	Tone 3 131.8	N	H	A	BOULDER PEAK - ALL CMD REPEATERS LINKED
6	TACTICAL	CDF T14	DIV A	159.3075	Tone 16 192.8	159.3075	Tone 16 192.8	N	H	A	
7	TACTICAL	CDF T15	DIV B/C	151.1825	Tone 16 192.8	151.1825	Tone 16 192.8	N	H	A	
8	TACTICAL	CDF T24	TRAFFIC CONTROL	159.3375	Tone 16 192.8	159.3375	Tone 16 192.8	N	H	A	
9	TACTICAL	CDF T35	DIV D/E	151.4675	Tone 17 67.0	151.4675	Tone 17 67.0	N	H	A	
10	TACTICAL	CDF T36	UNASSIGNED	159.3225	Tone 17 67.0	159.3225	Tone 17 67.0	N	H	A	
11	TACTICAL	CDF T37	UNASSIGNED	151.1525	Tone 17 67.0	151.1525	Tone 17 67.0	N	H	A	
12	TACTICAL	VFIRE 25	UNASSIGNED	154.2875	Tone 6 156.7	154.2875	Tone 6 156.7	N	H	A	
13	Air-to-Ground	A/G CMD	ALL DIVISIONS	166.6000	NONE	166.6000	NONE	N	H	A	
14	Air-to-Ground	A/G TAC	ALL DIVISIONS	168.3750	NONE	168.3750	NONE	N	H	A	
15	TACTICAL	CALCORD	MEDICAL	156.0750	Tone 6 156.7	156.0750	Tone 6 156.7	N	H	A	
16	EMERGENCY	AIRGUARD	EMERGENCY	168.6250	NONE	168.6250	Tone 1 110.9	N	H	A	EMERGENCY ONLY
Prepared By (Communications Unit Leader)				Incident Location: Etna				Forest / Unit / Jurisdiction: Klamath NF			
Kody Kerwin, COML (925) 953-3044 Communications 24hr: 510-507-1514				County: Siskiyou State: CA				Latitude: " N Longitude: W			

INCIDENT RADIO COMMUNICATIONS PLAN (ICS 205)		Incident Name		Date/Time Prepared		Operational Period Date/Time					
		SHELLY SH717 Z2		7/22/2024 1400		7/23/2024 to 7/24/2024 0700 to 0700					
CONTROLLED CLASSIFIED INFORMATION/BASIC											
Utilization of any frequency other than those listed on this form are prohibited, subject to fines by the FCC and demobilization from the incident.											
Zn Ch	Function	Channel Name/Trunked Radio System Talkgroup	Assignment	RX Freq N or W	RX Tone/NAC	IX Freq N or W	Tx Tone/NAC	Dev	Pwr A, D or M	Mode	Remarks
1	COMMAND	NIFC C3	ALL DIVISIONS	170.4250	Tone 3 131.8	168.0750	Tone 3 131.8	N	H	A	ENGLISH PEAK - ALL CMD REPEATERS LINKED
2	COMMAND	NIFC C10	ALL DIVISIONS	170.4125	Tone 3 131.8	165.9625	Tone 3 131.8	N	H	A	QUARTZ LOOKOUT - ALL CMD REPEATERS LINKED
3	COMMAND	NIFC C11	ALL DIVISIONS	170.6875	Tone 3 131.8	166.5750	Tone 3 131.8	N	H	A	WHISKEY BUTTE - ALL CMD REPEATERS LINKED
4	COMMAND	NIFC C12	ALL DIVISIONS	173.0375	Tone 3 131.8	167.3250	Tone 3 131.8	N	H	A	HELISLOT 5 - ALL CMD REPEATERS LINKED
5	COMMAND	NIFC C20	ALL DIVISIONS	172.5500	Tone 3 131.8	162.1875	Tone 3 131.8	N	H	A	BOULDER PEAK - ALL CMD REPEATERS LINKED
6	TACTICAL	NIFC T1	DIV F/G/M	168.0500	Tone 3 131.8	168.0500	Tone 3 131.8	N	H	A	
7	TACTICAL	NIFC T2	UNASSIGNED	168.2000	Tone 3 131.8	168.2000	Tone 3 131.8	N	H	A	
8	TACTICAL	NIFC T3	DIV T	168.6000	Tone 3 131.8	168.6000	Tone 3 131.8	N	H	A	
9	TACTICAL	NIFC T4	FSR 1	166.7250	Tone 3 131.8	166.7250	Tone 3 131.8	N	H	A	
10	TACTICAL	NIFC T5	FSR EAST	166.7750	Tone 3 131.8	166.7750	Tone 3 131.8	N	H	A	
11	TACTICAL	NIFC T6	FSR NORTH	168.2500	Tone 3 131.8	168.2500	Tone 3 131.8	N	H	A	
12	TACTICAL	VTAC 12	FSR SOUTH	154.4525	Tone 6 156.7	154.4525	Tone 6 156.7	N	H	A	
13	Air-to-Ground	A/G CMD	ALL DIVISIONS	166.6000	NONE	166.6000	NONE	N	H	A	
14	Air-to-Ground	A/G TAC	ALL DIVISIONS	168.3750	NONE	168.3750	NONE	N	H	A	
15	TACTICAL	CALCORD	MEDICAL	156.0750	Tone 6 156.7	156.0750	Tone 6 156.7	N	H	A	
16	EMERGENCY	AIRGUARD	EMERGENCY	168.6250	NONE	168.6250	Tone 1 110.9	N	H	A	EMERGENCY ONLY
Prepared By (Communications Unit Leader)				Incident Location: Etna				Forest / Unit / Jurisdiction: Klamath NF			
Kody Kerwin, COML (925) 953-3044 Communications 24hr: 510-507-1514				County: Siskiyou State: CA				Latitude: " N Longitude: W			

INCIDENT RADIO COMMUNICATIONS PLAN (ICS 205)		Incident Name		Date/Time Prepared		Operational Period Date/Time					
INCIDENT RADIO COMMUNICATIONS PLAN (ICS 205)		SHELLY IA		7/22/2024 1400		7/23/2024 to 7/24/2024 0700 to 0700					
CONTROLLED CLASSIFIED INFORMATION/BASIC											
Utilization of any frequency other than those listed on this form are prohibited, subject to fines by the FCC and demobilization from the incident.											
Zn Ch	Function	Channel Name/Trunked Radio System Talkgroup	Assignment	RX Freq N or W	RX Tone/NAC	TX Freq N or W	TX Tone/NAC	Dev	Pwr	Mode A, D or M	Remarks
1	DISPATCH	FS KNF	DISPATCH	171.5250	NONE	165.4125	OST	N	H	A	DISPATCH
2	COMMAND	KNF SALMON	IA COMMAND	172.4000	NONE	164.1250	OST	N	H	A	
3	COMMAND	KNF RIVER	IA COMMAND	172.2500	NONE	165.0750	OST	N	H	A	
4	TACTICAL	R5 T4	IA TAC	166.5500	NONE	166.5500	OST	N	H	A	
5	Air-to-Ground	A/G 43	IA A/G	167.6000	NONE	167.6000	OST	N	H	A	
6	DISPATCH	SKU-L	DISPATCH	151.3250	Tone 6 156.7	159.3600	OST	N	H	A	
7	TACTICAL	CDF T9	IA TAC	151.3850	Tone 16 192.8	151.3850	OST	N	H	A	TONE 16 (192.8)
8	TACTICAL	CDF T10	IA TAC	151.4000	Tone 16 192.8	151.4000	OST	N	H	A	TONE 16 (192.8)
9	Air-to-Ground	CDF A/G 1	IA A/G	151.2200	Tone 16 192.8	151.2200	OST	N	H	A	TONE 16 (192.8)
10											
11											
12											
13											
14	Air-to-Ground	A/G TAC	ALL DIVISIONS	168.3750	NONE	168.3750	OST	N	H	A	
15	TACTICAL	CALCORD	ALL DIVISIONS	156.0750	Tone 6 156.7	156.0750	OST	N	H	A	MEDICAL EVAC TONE 6 (156.7)
16	EMERGENCY	AIRGUARD	EMERGENCY	168.6250	NONE	168.6250	OST	N	H	A	EMERGENCY ONLY - TONE 1 (110.9)
Prepared By (Communications Unit Leader)				Incident Location: ETNA				Forest / Unit / Jurisdiction: KLAMATH NF			
Kody Kerwin, COML (925) 953-3044 Communications: 510-507-1514				County: Siskiyou State: CA				Latitude: " N Longitude: W			



Shelly Fire Ground Support **Yreka Ground Support / Demob Inspections**

279 Sharps Road Yreka, Ca 96097

Fuel Location (0600-2000)

Mudd Lake Oil 1712 Fairlane Road, Yreka, Ca 96097 ICP

Repairs

Day Shift 0700-1900-Glen McHenry 530-598-2631

After Hours 1900-0700-On Call Mechanic 916-206-8967

Ground Support

Jeremy Christofferson (GSUL) 951-287-0886

Kevin Berghaus (GSULT) 714-715-0481

Etna Ground Support / Demob Inspections

125 Horn Lane Etna, Ca, 96027

Fuel Location (0600-2000)

Mean Gene's Gas Inc. 125 Horn Lane Etna, Ca 96027

Ground Support (0600-2000)

Ground Support - Dave Trussell 530-251-3109

Ground Support - Dave Corral 805-358-7532

Transportation

State Transportation Request - Contact Charles Palmer (CJ) 530-925-4544

Federal Transportation Request - Contact Miguel 209-768-0142



FINANCE MESSAGE



CAL FIRE TIME Process

Shift Tickets: Line supervisors complete for Hired Equipment and submit hard copy to TIME, OR complete an e-Shift Ticket online at <https://shifftickets.fire.ca.gov>.

Personnel Time: All CAL FIRE personnel check-in to TIME trailer located at fairgrounds in Yreka.

Hired Equipment: All Hired Equipment resources on a 20,000-block request number, check-in to TIME trailer located in Yreka with a copy of your agreement.

Local Government: Check-in with OES Rep, located at the fairgrounds in Yreka.

COMP/CLAIMS

Report all injuries and damage claims to the Comp Claims Trailer located at Yreka Fairgrounds.

- Josh Chastain: (530) 922-0131

AO-341 Hotel Rosters

Please sign the roster for every night.

Feeding

Feeding is provided at the Yreka fairgrounds.

Off-Site feeding: Will be updated and posted DAILY at Motels Unit.

SHIFT TICKET EXAMPLE

EMERGENCY SHIFT TICKET and EVALUATION FORM					Contractor Name						
Incident or Project Name SHELLY			Incident Number CAKNF005159		Request Number E # HERE						
Agreement Number			FISCAL ID #		Operator #1 BOB SMITH						
Equipment Make CAT			Equipment Model / Type D6XM		Operator #2 TOM SMITH						
Serial Number 12345678			Licence Number 1234567		Operator Furnished By: <input checked="" type="checkbox"/> Contractor <input type="checkbox"/> Government						
Equipment Use			(Circle) Hours Days / Miles		Operating Supplies Furnished By: <input checked="" type="checkbox"/> Contractor <input type="checkbox"/> Government						
Date Mo / Day	Start	Stop	Work	Assignment	Equipment Status						
7/21	0700	2400	17	DIV M	<input checked="" type="checkbox"/> Inspected	<input type="checkbox"/> Under Agreement					
7/22	0001	0700	7	DIV M	<input type="checkbox"/> Released by Government	<input type="checkbox"/> Withdrawn by Contractor					
Vendor Rating					Govt. Rep. Name and Position - PRINT						
<table border="1"> <tr> <td>Poor*</td> <td>Avg.</td> <td>Good</td> <td>Exc.</td> <td>N/A</td> </tr> </table>					Poor*	Avg.	Good	Exc.	N/A	Mike Weber	
Poor*	Avg.	Good	Exc.	N/A							
Met Performance Expectations					Govt. Rep. Signature						
Equipment in Safe Working Condition					<i>Mike Weber</i>						
Operator Skill Level					Contractor Signature						
Operates Safely					<i>Bob Smith</i>						
Operator's Cooperation Level					Date						
Overall Performance					Time						
<p>* NOTE: Any rating of POOR requires an explanation in Comment Section. **Final evaluation or for more documentation, use an ICS Form 230 or equivalent.</p>					07/22/24 0800 CALFIRE 297 (Rev 3-2011)						
Pink - Finance		Blue - Home Unit HE Coordinator		Yellow - Vendor		White - Govt Representative					

24 HOUR RESOURCE

EMERGENCY SHIFT TICKET and EVALUATION FORM					Contractor Name						
Incident or Project Name SHELLY			Incident Number CAKNF005159		Request Number E # HERE						
Agreement Number			FISCAL ID #		Operator #1 BOB SMITH						
Equipment Make FORD			Equipment Model / Type STAKESIDE		Operator #2						
Serial Number 12345678			Licence Number 1234567		Operator Furnished By: <input checked="" type="checkbox"/> Contractor <input type="checkbox"/> Government						
Equipment Use			(Circle) Hours Days / Miles		Operating Supplies Furnished By: <input checked="" type="checkbox"/> Contractor <input type="checkbox"/> Government						
Date Mo / Day	Start	Stop	Work	Assignment	Equipment Status						
7/21	0700	1900	12	DIV M	<input checked="" type="checkbox"/> Inspected	<input type="checkbox"/> Under Agreement					
Vendor Rating					Govt. Rep. Name and Position - PRINT						
<table border="1"> <tr> <td>Poor*</td> <td>Avg.</td> <td>Good</td> <td>Exc.</td> <td>N/A</td> </tr> </table>					Poor*	Avg.	Good	Exc.	N/A	Mike Weber	
Poor*	Avg.	Good	Exc.	N/A							
Met Performance Expectations					Govt. Rep. Signature						
Equipment in Safe Working Condition					<i>Mike Weber</i>						
Operator Skill Level					Contractor Signature						
Operates Safely					<i>Bob Smith</i>						
Operator's Cooperation Level					Date						
Overall Performance					Time						
<p>* NOTE: Any rating of POOR requires an explanation in Comment Section. **Final evaluation or for more documentation, use an ICS Form 230 or equivalent.</p>					07/21/24 2000 CALFIRE 297 (Rev 3-2011)						
Pink - Finance		Blue - Home Unit HE Coordinator		Yellow - Vendor		White - Govt Representative					

12 HOUR RESOURCE

Turn shift tickets Into Time Unit.



PUBLIC INFORMATION

Public Information Line: 530-214-9739 or dial 211

CURRENT INCIDENT STATUS	
Incident Start Date: 07/03/2024	Incident Start Time: 1:27 AM
Cause: Under Investigation	Acres: 15,477
Containment: 55%	Total Personnel: 2,085

MEDIA

California State Penal Code Section 409.5(d) allows the news media to enter scenes of disaster, riot, or civil disturbance. Correctly identified news media members should not be restricted from entering locations specified within the code. However, this does not include crime scenes or private property and does not imply that the news media may interfere with incident operations while in the areas of concern. More information can be found by following the QR code.



PHOTOGRAPHS AND VIDEOS OF THE INCIDENT

The Public Information Office would like copies of the video and pictures that were safely took while not in an emergency, fire suppression activity, or overhead assignment. Bring video and pictures to the Public Information trailer; photos will be reviewed and possibly uploaded to social media. As a reminder the Public Information Office does not want photographs or videos that depict unsafe, unprofessional, or embarrassing circumstances, which are a severe breach of ethics.



LOST AND FOUND

The Information Section will manage lost and found items for the incident at the PIO Trailer.

SHELLY FIRE LINKTREE

Use the QR code to the right to get quick access to information about the current status of the fire and for resources for residents returning home for wildfire.



Shelly Incident Fire Suppression Repair Plan – State DPA CA-KNF-005159

The Shelly Fire has burned in the steep headwater area of the Scott River. Due to the steep and highly erosive granitic soil types and sensitive nature of the watershed that contains such values as listed anadromous salmonids, Suppression Repair Specialists shall be used to supervise repair work and give final approval of finished work. Fire Suppression Repair within the State Direct Protection Area will occur on dozer lines, handlines, roads, and other areas utilized by fire suppression resources. The purpose of the repair is to mitigate possible adverse effects to resources resulting from fire suppression activities.

Dozerlines- Dozerline constructed on this incident varies between single blade width to five blade widths (approximately 12-50 feet). Berms and push-piles shall be spread to the extent feasible and cleared of organics. This is generally accomplished by back-blading with a tractor or with an excavator. Debris piled against standing timber shall be pulled back while taking care not to damage growing stock with the tractor blade or an excavator bucket and thumb. Masticators or chippers may be utilized to dispose of concentrated organic material along roads, around structures and in strategic areas (i.e. fuelbreaks). At helispots/ staging areas and safety zones, remove soil, and/or breach berms so that runoff can be dissipated. Cross-drain these areas to effectively dissipate water if necessary.

Waterbreaks shall be installed at a spacing which corresponds to a moderate and high hazard rating in the California Forest Practice Rules. The following waterbreak spacing information is a general guide for maximum spacing, actual location of waterbreaks should be tailored to the topography and placement should be suited to the best dispersal of water flow:

<u>Line Gradient</u>	<u>Maximum Waterbreak Spacing</u>
0-10%	200 Feet
11-25%	150 Feet
26-50%	100 Feet
>50%	75 Feet

Waterbreaks shall be constructed at an approximately 45-degree angle and shall be a minimum depth of 10 inches from the bottom of the cut to the top of the berm. Where possible the discharge from the waterbreaks shall be directed into vegetated areas to minimize erosive forces.

Where slopes exceed the range at which a tractor can effectively work, waterbreaks shall be constructed with handtools. Where dozerline has crossed watercourses, the channel of the watercourse will be cleared of soil and debris to re-establish the watercourse channel.

Hand Constructed Fireline- Hand constructed fireline shall have water breaks installed with hand tools. The waterbreaks shall be approximately 10 inches in depth from the bottom of the cut area to the top of the berm. Waterbreaks shall be angled at least 45 degrees to the fireline. The interval between waterbreaks shall be approximately 50 feet with closer spacing as needed on steep pitches. No waterbreaks shall be required where the fireline traverses a side hill, however if the line is cup trenched the berm shall be breeched periodically to prevent channelization of runoff.

Where hand constructed fireline crosses a watercourse, any soil material deposited in the channel shall be removed and placed in a location where it will not wash back into the watercourse. Waterbreaks shall be installed on the approaches to the crossing to prevent sediment from eroding from the fireline into the watercourse.

Fire Roads- Roads used in fire suppression activities shall be left in at least as good a condition as they were found. Gravel and soil surface roads shall be watered to prevent excessive dust formation. Where suppression activities have damaged or rendered road drainage facilities non-functional, waterbreaks or drivable drainage dips shall be installed for drainage. Where suppression activities have filled in or damaged inside ditches, the ditches shall be cleaned and left unobstructed.

Archaeological Resources - If any sites are located during suppression repair activities, work will stop in that location and the Suppression Repair Lead will be notified.

Other Repair Concerns- Broken, damaged fences, and/or gates damaged as the result of the fire control operations shall be repaired.

If you have any questions, please contact Siskiyou Unit Forester, Steve Wilson at (530) 842-3516.

Human Resource Message
July 23, 2024

Personality Factors in Emergency Personnel...

Research indicates that emergency personnel have different personalities from the average person who has a less risky or demanding job.

Emergency personnel are more interested in details than people from other professions.

They take pride in doing a perfect job, set personal standards that are extremely high, and become frustrated when they fail. This attention to detail helps them do a better job, but it also sets them up for the stress associated with a failure to achieve high expectations.

They are action oriented. They are quick decision makers under pressure and task oriented. They seek immediate results and are easily bored.

Risk taking behaviors accompany action orientation in their personalities. They often seek sports activities that are highly stimulating and exciting because they are easily bored and need something to keep them alert.

They have an extreme sense of dedication.

They have a strong need to be liked by the people around them.

They have a difficult time expressing their emotions and are more prone to experiencing delayed stress responses and the effects of cumulative stress.

Consider your own personality, some of these traits may or may not fit....



Janine Summy, Human Resource Specialist, 509-429-1206

Training Specialist Message

Yreka Camp:

TRAINEES that are assigned a 20,000 Request #:

- Check-in and closeout will be facilitated by the Training Specialist at the Yreka Base Camp.

TRAINERS

- Sign off PTB tasks as they are completed.
- Complete the PTB Evaluation Record prior to Demob.
- Complete an ICS 225 (Personal Performance Record) prior to Demob.
- Complete the Final Evaluator's Verification page in the PTB. if you are recommending them for qualification.

TRAINEES

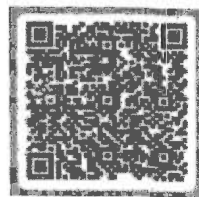
- Secure your PTB.
- Ensure you have the above-mentioned documents completed and signed. by your Trainer prior to Demob.
- You do not have to wait for your assigned Demob time to close out with the Training Specialist.

Yreka Base Camp Training Specialist
Shane Vargas (530) 410-4225

Etna Camp:

How to register as a Trainee:

1. Use the QR code or come by the training trailer.



How to close-out your training assignment:

1. **Trainer and Trainee:** Have a conversation, open dialog between both.
2. **Trainer:** Complete an Evaluation Record in the back of the Position Task Book and make as many entries as possible within the individual tasks. Discuss this with your Trainee.
3. **Trainer:** Complete an individual performance rating (ICS 225) and go over the performance rating with your Trainee.
4. **Trainer and Trainee:** Come by the training trailer with the above documents to close out your assignment.

Robert Rivelle – TNSP
707-498-1761
rrivelle@nps.gov

Jecobie Waters - TNSP
530-414-3470
Jecobie.waters@usda.gov

SHELLY FIRE DEMOB LIST

TUESDAY 07/23/2024

CREWS

C-45	CST1	CST1 – LAC ST1183G	0730
C-46	CST1	CST1 – LAC ST1176G	0800

EQUIPMENT

E-94	ENG6	FIRE SOLUTIONS LLC	0700
E-95	ENG6	RYAN FLORES	0700
E-127	ENG3	KETCHUM FD	0715
E-128	ENG3	KMB ADVISORS 150350	0715
E-129	ENG3	KMB ADVISORS 150662	0730
E-149	ENG6	BLUFFDALE FD	0730
E-152	ENG6	BLACKHAWK VFD BRUSH	0745
E-164	ENG6	WOODPECKER	0745
E-168	WTS2	GRANT HANNA	0800
E-178	WTT2	CASHF TT266	0800
E-209	AMB2	MOUNTAIN MEDICS	0805
E-214	DZR2	JIM JOHNSON LOGGING	0815
E-252	EST6	1807F	0815
E-391	CHP2	NORTH PACIFIC	0830
E-414	SKG2	LET-ER-BUCK	0830

Pick up checkout sheet at Demob trailer.
Report to Finance at listed time to close out time.

SHELLY FIRE DEMOB LIST

TUESDAY 07/23/2024

OVERHEAD

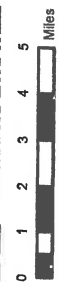
O-86	EMPF	FARRER, JOBEE	0700
O-93	EMPF	HORVATH, JOSHUAH	0710
O-133	FFT2	JOHANNSEN, HANS	0720
O-146	SOFR	PFISTER, KEVIN	0725
O-154	FMOD	TOMS TIMBER	0730
O-155	FMOD	C AND K WILDFIRE	0740
O-156	FMOD	C AND K WILDFIRE	0750
O-157	FMOD	WEST COAST CUTTING	0800
O-159	FMOD	RED FLAG	0810
O-163	FMOD	GOD AND COUNTRY	0820
O-177	REAF	LUDT, BRIAN	0830
O-209	SOFR	AULS, ANDREW	0840
O-211	SOFR	SELLERS, FRANK	0850
O-212	SOF2	HABECK, ROBERT	0900
O-226	HEQB	STEVENS, JESSE	0910
O-227	HEQB	CORDELL, QUENTIN	0920
O-228	HEQB	GAILEY, JUSTIN	0930
O-238	DIVS	HELGESON, DAVID	0940
O-244	HEQB	ROAM, MASON	0950
O-245	HMGB	GRAVES, IRA	1000
O-246	REAF	DIAZ, BRYAN	0800
O-247	FDUL	FOSTER, LAURIE	0810
O-267	REMS	REMS MODULE	0820
O-273	EMPF	SIEMANN, TAYLOR	0830
O-278	RADO	TEASDALE, STEVEN	0840
O-309	COMP	MCCLURE, DEBRA	0850
O-416	PIO2	DEYERBERG, ROBERT	0900
O-436	CREP	LITZ, KRITIAN	0910
O-463	GSUL	TURBEVILLE, ERIC	0920
O-516	FSC1	LEE, AMY	0930

THIS PAGE INTENTIONALLY LEFT BLANK

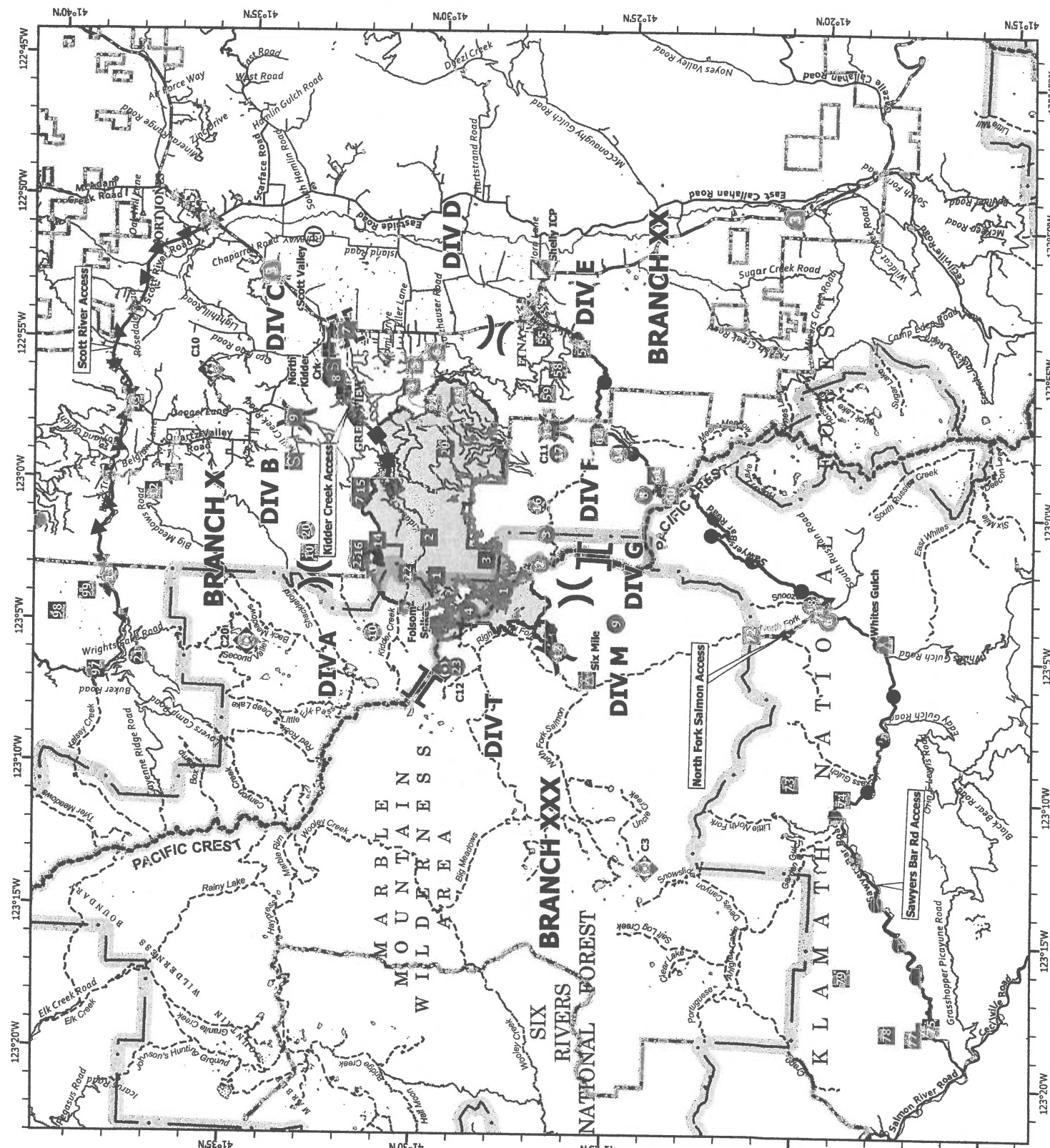
TRANSPORTATION
 SHELLY
 CA-KNF-005159
 07/23/2024

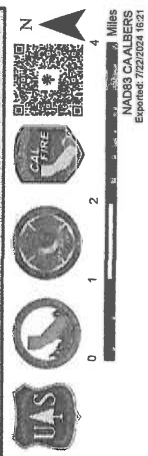
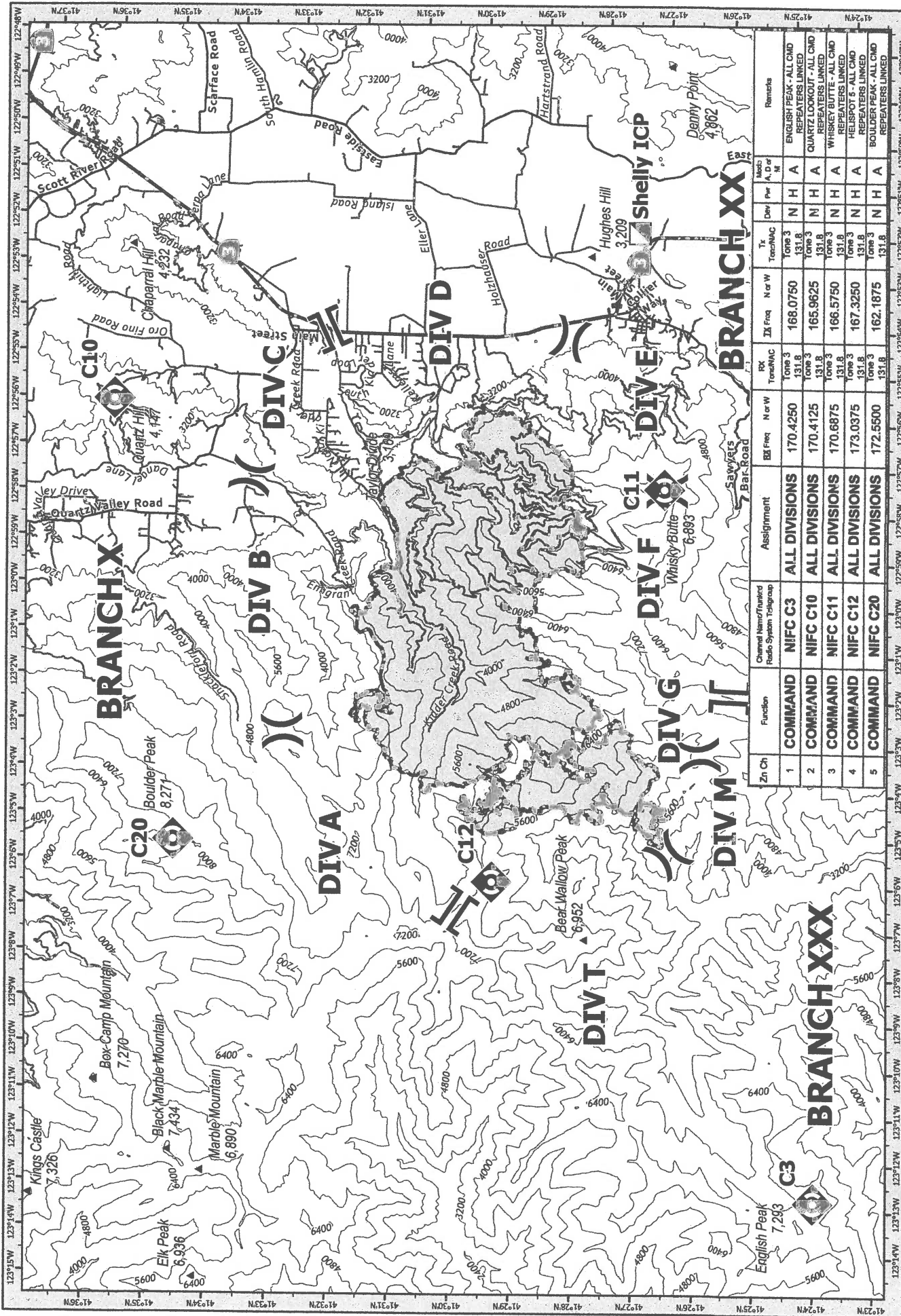


- Shelly Fire
- Contained Fire Edge
- Uncontained Fire Edge
- Branch Break
- Division Break
- Incident Command Post
- Drop Point
- Camp
- Staging Area
- Repeater
- Helibase
- Helispot
- Secondary Highway
- Major Road
- Minor Road
- Pacific Crest Trail
- Trails
- Wilderness
- Forest Boundary
- Transportation Routes**
- Kiddier Creek Access
- North Fork Salmon Access
- Sawyers Bar Rd Access
- Scott River Access



NAD83 California (Teale) Albers





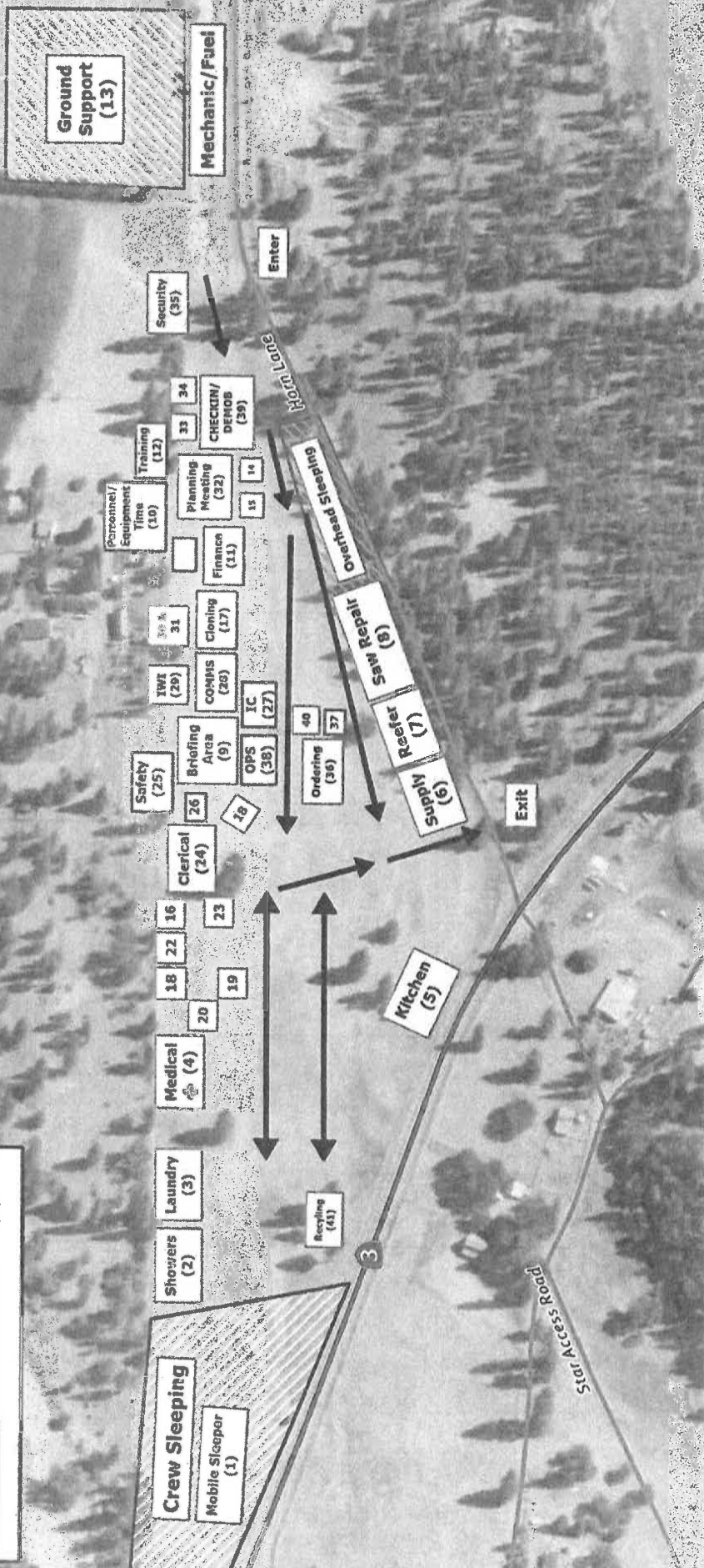
COMMUNICATIONS
SHELLY
 CA-KNF-005159
 07/23/24 0700

Repeater
 Branch Break
 Incident Command Post
 Division Break
 Gap; Summit

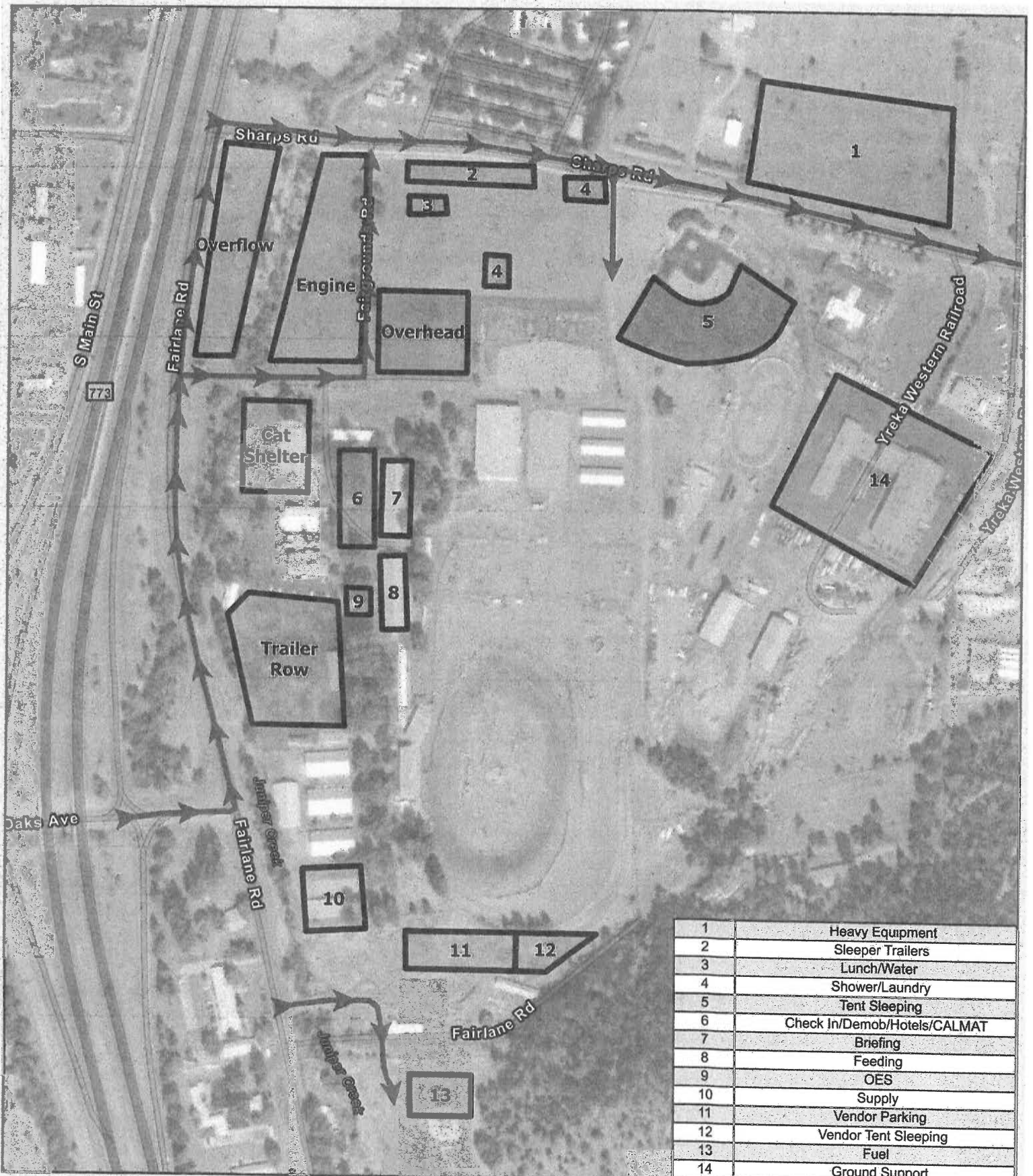
Etna Camp & ICP

Shelly Fire

CA-KNF-005159



1	Mobile Sleepers	10	Personnel/Equipment Time	19	Resources	27	IC	35	Security
2	Showers	11	Finance	20	Situation	28	Communications	36	Ordering
3	Laundry	12	Training	21	Medical	29	IWI	37	LOGS
4	Medical (Mountain Medical)	13	Ground Support	22	Law Liason	30	SOPL/STRAT OPS	38	Planning OPS
5	Kitchen	14	HR/AA	23	FBAN/IMET	31	POST/OPS	39	CHECKIN/DEMOB
6	Supply	15	Tribal Liason	24	Clerical Trailer (Fire Dawg)	32	Planning/Cooperator Meeting	40	FACL
7	Reefer	16	PIO	25	Safety	33	ITSS	41	Recycling
8	Saw Repair	17	COMMS/Cloning	26	PLANS	34	READ		
9	Briefing	18	GIS	27	OPS				



1	Heavy Equipment
2	Sleeper Trailers
3	Lunch/Water
4	Shower/Laundry
5	Tent Sleeping
6	Check In/Demob/Hotels/CALMAT
7	Briefing
8	Feeding
9	OES
10	Supply
11	Vendor Parking
12	Vendor Tent Sleeping
13	Fuel
14	Ground Support



Datum: NAD 83 1:4,200



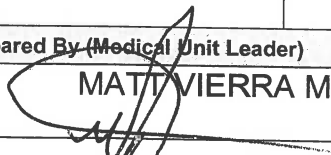
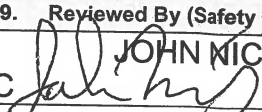
YREKA BASE CAMP
Shelly Incident
 CA-KNF-005159



DISCLAIMER: The displayed incident data is approximate and should only be used for informational purposes. The information contained in supporting data layers was generated from GIS data maintained by different sources and agencies and is not necessarily accurate to mapping, surveying, or engineering standards.

IMT 6 GIS
 7/29/2014
 11:42 AM

MEDICAL PLAN (ICS 206 WF) TEAM SHELLY

1. Incident Name				2. Operational Period			
SHELLY INCIDENT CA-KNF-005159				Date/Time: 07/23/2024 – 07/24/2024 0700-0700			
3. EMS / Ambulance Services/Aid Stations							
Name	Location	Frequency/Phone	Advanced Life Support (ALS)				
			Yes	No			
MT. SHASTA AMBULANCE	YREKA, CA	Shelly Communications 510 507-1514		X			
ETNA AMBULANCE	ETNA, CA	Shelly Communications 510 507-1514	X				
MT. MEDICS Aid Station	ICP	530-859-2799	X				
4. Air Rescue / Air Ambulance Services							
Name	Phone	Type of Aircraft & Capability					
MERCY AIR	Yreka Interagency Command Center 530-841-4600	AIR AMBULANCE, 24 HR ALS, NO HOIST					
PHI	Yreka Interagency Command Center 530-841-4600	AIR AMBULANCE, 24 HR ALS, NO HOIST					
REACH AIR	Yreka Interagency Command Center 530-841-4600	AIR AMBULANCE, 24 HR ALS, NO HOIST					
CHP	Yreka Interagency Command Center 530-841-4600	0600-0230, ALS, DAY HOIST ONLY, NO SHORT HAUL					
COAST GUARD	Yreka Interagency Command Center 530-841-4600	24 HR HOIST, BLS ONLY					
National Guard (G841)	Yreka Interagency Command Center 530-841-4600	24 HR HOIST, ALS					
5. Hospitals (all times estimated from incident location)							
Name & Level	GPS Datum – WGS 84 Degrees Decimal Minutes	Travel Time		Phone	Helipad		Address
	Lat: 38°33.292'N	Air	Gnd		Yes	No	
UC DAVIS MEDICAL CENTER LEVEL 1 TRAUMA	Long: 121°27.326'W	1.5hr	6hr	916-734-3790 ER Desk	X		2315 Stockton Blvd. Sacramento, CA 95817
MERCY MEDICAL CENTER Redding LEVEL 2 TRAUMA	Lat: 40°34.325'N	40m	3hr	530-225-7200 ER Desk	X		2175 Roseline Ave. Redding, CA 96001
	Long: 122°23.700'W						
ASANTE ROGUE REGIONAL MEDICAL CENTER-LEVEL 2	Lat: 42°19.07'N	20m	2hr	541-789-7132 ER Desk	X		2825 E. Barnette Rd. Medford, OR 97504
	Lat: 122°49.90'W						
MERCY MEDICAL CENTER Mt. Shasta LEVEL 3 TRAUMA	Lat: 41°19.111'N	30m	2hr	530-926-9360 ER Desk	X		914 Pine St. Mt. Shasta. CA 96067
	Long: 122°19.200'W						
FAIRCHILD MEDICAL CENTER LEVEL 4 TRAUMA	Lat: 41°43.181'N	20m	1.5h	530-841-6292 ER Desk	X		444 Bruce St. Yreka, CA 96097
	Long: 122°38.757'W						
6. Division / Crew Emergency Pre-Plan <i>Update and discuss with assigned resources daily.</i>							
Fireline EMT / Medic's Division / Branch Location							
Air Hoist site location site: Lat: / Long: / Elevation:							
Helispot: Lat: / Long: / Elevation:							
7. Prepared By (Medical Unit Leader)			8. Date/Time		9. Reviewed By (Safety Officer)		10. Date/Time
MATT VIERRA MEDL 			07/22/2024 1800		JOHN NICKY  SOFC		07/22/2024 1800

MEDICAL PLAN (ICS 206 WF) TEAM SHELLY

Medical Incident Report

FOR A NON-EMERGENCY INCIDENT, WORK THROUGH CHAIN OF COMMAND TO REPORT AND TRANSPORT INJURED PERSONNEL AS NECESSARY.

FOR A MEDICAL EMERGENCY: IDENTIFY ON SCENE INCIDENT COMMANDER BY NAME AND POSITION AND ANNOUNCE "MEDICAL EMERGENCY" TO INITIATE RESPONSE FROM IMT COMMUNICATIONS/DISPATCH.

Use the following items to communicate situation to communications/dispatch.

1. CONTACT COMMUNICATIONS / DISPATCH (Verify correct frequency prior to starting report)

Ex: "Communications, Div. Alpha. Stand-by for Emergency Traffic."

2. INCIDENT STATUS: Provide incident summary (including number of patients) and command structure.

Ex: "Communications, I have a Red priority patient, unconscious, struck by a falling tree. Requesting air ambulance to Forest Road 1 at (Lat./Long.) This will be the Trout Meadow Medical, IC is TFLD Jones. EMT Smith is providing medical care."

Severity of Emergency / Transport Priority	<input type="checkbox"/> RED / PRIORITY 1 Life or limb threatening injury or illness. Evacuation need is IMMEDIATE <i>Ex: Unconscious, difficulty breathing, bleeding severely, 2° - 3° burns more than 4 palm sizes, heat stroke, disoriented.</i> <input type="checkbox"/> YELLOW / PRIORITY 2 Serious Injury or illness. Evacuation may be DELAYED if necessary. <i>Ex: Significant trauma, unable to walk, 2° - 3° burns not more than 1-3 palm sizes.</i> <input type="checkbox"/> GREEN / PRIORITY 3 Minor injury or illness. Non-Emergency transport <i>Ex: Sprains, strains, minor heat-related illness.</i>	
Nature of Injury or Illness & Mechanism of Injury		Brief Summary of Injury or Illness <i>(Ex: Unconscious, Struck by Falling Tree)</i>
Transport Request		Air Ambulance / Short Haul/Hoist Ground Ambulance / Other
Patient Location		Descriptive Location & Lat. / Long. <i>(WGS84)</i>
Incident Name		Geographic Name + "Medical" <i>(Ex: Trout Meadow Medical)</i>
On-Scene Incident Commander		Name of on-scene IC of Incident within an Incident <i>(Ex: TFLD Jones)</i>
Patient Care		Name of Care Provider <i>(Ex: EMT Smith)</i>

3. INITIAL PATIENT ASSESSMENT: Complete this section for each patient as applicable (start with the most severe patient)

Patient Assessment: See IRPG PAGE 106

Treatment:

4. TRANSPORT PLAN:

Evacuation Location *(if different): (Descriptive Location (drop point, intersection, etc.) or Lat. / Long.)* Patient's ETA to Evacuation Location:

Helispot / Extraction Site Size and Hazards:

5. ADDITIONAL RESOURCES / EQUIPMENT NEEDS:

Example: Paramedic/EMT, Crews, Immobilization Devices, AED, Oxygen, Trauma Bag, IV/Fluid(s), Splints, Rope rescue, Wheeled litter, HAZMAT, Extrication :

6. COMMUNICATIONS: Identify State Air/Ground EMS Frequencies and Hospital Contacts as applicable

Function	Channel Name/Number	Receive (RX)	Tone/NAC *	Transmit (TX)	Tone/NAC *
COMMAND					
AIR-TO-GRND					
TACTICAL					

7. CONTINGENCY: Considerations: If primary options fall, what actions can be implemented in conjunction with primary evacuation method? Be thinking ahead. .

8. ADDITIONAL INFORMATION: Updates/Changes, etc. .

REMEMBER: Confirm ETA's of resources ordered. Act according to your level of training. Be Alert. Keep Calm. Think Clearly. Act Decisively. .