

# INCIDENT ACTION PLAN SHELLY INCIDENT

CA-KNF-005159  
P5 R18J (0505)



## OPERATIONAL PERIOD

7/10/2024 0700

to

7/11/2024 0700



Check-In, IAP, Maps,  
Demob, Briefing

Wednesday

Wednesday

# INCIDENT OBJECTIVES (ICS 202)

<b>1. Incident Name:</b> <p style="text-align: center;">SHELLY</p>	<b>2. Operational Period:</b>	Date From: 7/10/2024	Date To: 7/11/2024
		Time From: 0700	Time To: 0700

**3. Objective(s):**

**Leaders Intent**

- Implement a full suppression strategy on the Shelly Fire. Values at risk include human safety, private timberlands, communities, cultural, and wilderness areas. Apply tactics that offer the highest probability of success.
- All incident assigned personnel should be prepared to take appropriate actions regarding:
  - Personal safety and the safety of others, including driving slowly and defensively.
  - Professional behavior, conduct, and timely / effective communication.
  - Manage fatigue by taking breaks and maintaining work / rest cycles.
  - Provide the highest level of customer service to all involved with or impacted by the Shelly Fire.

**Management Objectives**

- Provide for firefighter and public safety through hazard recognition and application of the risk management process.
- Coordinate all public information to provide timely and continuous information to affected agency partners, cooperators, and to the public.
- Coordinate suppression activities with assigned incident resource advisors to minimize impacts on natural and cultural resources.
- Maintain relationships with partner agencies, elected officials, organizations, tribes, neighboring landowners, and community groups and members.

**Control Objectives**

- To limit fire growth and to prevent the fire from spreading to private property, surrounding communities and values at risk, keep the Shelly Fire:
  - North of Salmon River Road
  - South of Scott Bar
  - East of the Scott River Ranger District boundary
  - West of Whisky Butte

**5. Site Safety Plan Required?** Yes  No

**Approved Site Safety Plan(s) Located at:**

**6. Incident Action Plan**

<input checked="" type="checkbox"/> ICS 203	<input type="checkbox"/> ICS 215A	<input type="checkbox"/> ICS 205 A	<input type="checkbox"/>
<input checked="" type="checkbox"/> ICS 204	<input checked="" type="checkbox"/> ICS 220	<input checked="" type="checkbox"/> Training Message	<input type="checkbox"/>
<input checked="" type="checkbox"/> ICS 205	<input checked="" type="checkbox"/> Facility Maps	<input type="checkbox"/> Travel Map	<input type="checkbox"/>
<input checked="" type="checkbox"/> ICS 206	<input checked="" type="checkbox"/> Weather Forecast	<input type="checkbox"/> Demob Plan	<input type="checkbox"/> County Health Message
<input checked="" type="checkbox"/> ICS 208	<input checked="" type="checkbox"/> Fire Behavior	<input checked="" type="checkbox"/> Finance Message	<input checked="" type="checkbox"/> ICS 214

**7. Prepared By:** *Fov* B. Vergne/G. Ozard Position/Title: PSC Signature:

**8. Approved by Incident Commander:** M. Conklin/K. Cunningham Signature:

## ORGANIZATION ASSIGNMENT LIST (ICS 203)

<b>1. Incident Name:</b> SHELLY		<b>2. Operational Period: Date From:</b> 7/10/2024		<b>Date To:</b> 7/11/2024	
		<b>Time From:</b> 0700		<b>Time To:</b> 0700	
<b>3. Incident Commander(s) and Command Staff:</b>			<b>7. Operation Section:</b>		
IC/UC's	M. Conklin/K. Cunningham	Operations	J. Owings/S. Lauderdale/J. Flores(T)		
Deputy	N. Johnny/P. Russell(T)	Deputy Operations	J. Chester(T)/A. Schultz(T)/K. Litz(T)		
Safety Officer	M. Seymour/M. Lipson	Night Ops	R. Szczepanek		
Information Officer	L. Sieliet/S. Bishop/D. McMillin(T)	Strategic Ops	E. Zanotto/J. Sohr(T)		
Liaison Officer	J. Martinez/J. Neumann(T)/T. Gonzalez(T)	<b>Branch</b>	<b>X</b>	<b>J. Walton(12), R. Wettstein(T)</b>	
		Division/Group	A	G. Lowdermilk/S. Rushing(T)	
<b>4. Agency/Organization Representatives:</b>		Division/Group	B	R. Valles	
Agency/Organization	Name	Division/Group	C	S. Clement	
USFS	C. Christofferson/N. Kelly(T)	Division/Group	D	S. Chapman(9247C)	
CALFIRE	M. Smith	Division/Group			
CDCR	J. Leventon	<b>Branch</b>	<b>XX</b>	<b>T. Pederson, T. Richter(12)</b>	
Timber Industries	D. Quigley	Division/Group	E	S. Galvez	
Karuk Tribe	G. Moon	Division/Group	F	D. Helgeson	
READ	D. Mason	Division/Group	G	A. Luna/R. Flitt(T)	
Cultural Specialist	M. Sanchez	Division/Group	T	R. Noxon/J. Bird(T)	
		Division/Group	Night	TBD	
		Division/Group			
		<b>Branch</b>	<b>Contingency</b>	<b>L. Wright</b>	
		Division/Group	North	S. Kovacs	
		Division/Group	South	R. DeCamp	
		Division/Group	East	M. Milojevich (12)	
		Division/Group			
		<b>Branch</b>	<b>Structure</b>	<b>C. Costa (12), J. Howard (T) (12)</b>	
		Division/Group	Etna	R. West (12)	
		Division/Group	Quartz Valley	C. Periera (12)	
		Division/Group	Greenview	C. Reginatto (12)	
<b>5. Planning Section:</b>		Division/Group			
Chief	B. Vergne/G. Ozard/ R. Verdie(T)/ J. Saiz(T)	Division/Group			
Deputy	S. Anderson	Division/Group			
Resource Unit	M. Yeun/R. Resnick/T.Hullquist(T)	<b>Branch</b>			
Situation Unit	R. Rook/R. Toby	Division/Group			
Documentation Unit	RIST	Division/Group			
Demobilization Unit	J. Grisedale	Division/Group			
GISS	R. Gonzalez/B. Hurtado	Division/Group			
FBAN	P. Doyle	Division/Group			
IMET	J. Ruthford	<b>Air Operations Branch</b>		<b>Director:</b>	<b>K. Beinschroth</b>
Training	J. Fakehany	Air Support Group Supervisor		D. Fulk(T)	
HRSP	A. Alvarez	Air Tactical Group Supervisor			
<b>6. Logistics Section</b>		Siskiyou County Helibase Manager		D. Cobb	
Chief	S. Ashbach/S. Irvine/D. Alicea/J. Fox(T)				
Supply Unit	M. Keck	<b>8. Finance/Administration Section:</b>			
Facilities Unit	A. Curley/E. Jensen(T)	Chief	R. Lang/L. Wilson/M. White/D. Dukart(V)		
Ground Support Unit	C. Syler/J. Lantello(T)	Time Unit	C. Scott/A. Van Atta		
Communications Unit	C. Perry	Procurement Unit	P. Wood/R. Smith/R. Kirtland(T)		
Medical Unit	B. Bennewate	Comp/Claims Unit			
Food Unit	S. Katanich	Cost Unit	E. Molina(T)		
<b>Prepared By: Name:</b> B. Vergne/G. Ozard Position/Title: PSC		<b>Signature:</b> 			
<b>ICS 203</b>		<b>Date/Time:</b> 7/9/2024 2300 hours			



# FIRE WEATHER FORECAST

FORECAST NO. 5

NAME OF INCIDENT: Shelly

PREDICTION FOR: Wednesday July 10, 2024

UNIT: Klamath National Forest

TIME AND DATE

SIGNED: *Julia E. Ruthford*

FORECAST ISSUED: 1900 Tuesday 7/9/24

Julia Ruthford – (530) 440-4898  
Incident Meteorologist

---

**\*\*\* Excessive Heat Warning through Wednesday with Very Unstable Afternoon Conditions Continuing \*\*\***

**WEATHER DISCUSSION:** Strong ridging will continue to bring hot, dry and unstable near surface conditions while limited mid level moisture gradually filtering in aloft further destabilizes the atmosphere. This combination will increase the potential for PyroCumulus to develop on top of the column if the fire produces enough heat. A strengthening onshore pressure gradient combined with a heat low inland will bring a strong push of W-SW to W-NW down-canyon winds during the afternoon & evening combined with continued low afternoon Min RHs.

---

**WEDNESDAY:**

**WEATHER:** Continued hot, dry and unstable with gusty afternoon & evening westerly winds.

**MAXIMUM TEMPERATURE:** Highs ranging from the mid 80s along ridges to upper 90s valleys.

**MINIMUM RELATIVE HUMIDITY:** 11-14% in valleys and 15-18% along ridges.

**20 FOOT WINDS:**

**SW of the PCT** – Up-slope winds of 2-4 mph developing late morning will become SW up-canyon 5-8 mph early afternoon with gusts of 10-15 mph possible mid to late afternoon. A shift to W-NW winds of 15-20 mph along ridges will bring battling winds in the afternoon & evening.

**NE of the PCT** – Up-slope winds of 3-5 mph becoming E-SE to E-NE up-canyon 4-7 mph winds early afternoon then reversing to W-SW to NW down-canyon winds between 1400 & 1500 and increasing to 15-20 mph with localized gusts of 25-30 mph late afternoon through the evening.

**STABILITY:** Smoky valley inversions lifting late morning but hazy smoke remaining over the area despite unstable afternoon conditions. Deep vertical mixing is possible mid to late afternoon with enhanced potential for column growth due to the increased availability of mid level moisture supporting PyroCumulus development.

**CHANCE OF RAIN:** 0%    **LAL:** 1    **SMOKE TRANSPORT WIND:** Morning: Light NE    Afternoon: NW 15-20 mph

---

**WEDNESDAY NIGHT:**

**WEATHER:** Continued warm with mid slope thermal belts and poor RH recoveries persisting.

**MINIMUM TEMPERATURE:** Low to mid 70s along slopes & ridges and in the 60s in valleys.

**MAXIMUM RELATIVE HUMIDITY:** Around 30% slopes & ridges and 40-50% valleys.

**20 FOOT WINDS:** NW winds 15-20 mph locally gusting 25-30 mph in the evening diminishing around 2100 then becoming N-NE 10-15 mph along ridges with downslope/down-valley 2-4 mph elsewhere.

**STABILITY:** Dense smoke settling into valleys overnight including Scott Valley.

**CHANCE OF RAIN:** 0%    **LAL:** 1    **SMOKE TRANSPORT WIND:** NE around 10 mph

---

**THURSDAY:** Continued warm and dry though a few degrees cooler with high temps ranging from the lower 80s along ridges to mid 90s in the valleys. Min RHs in the mid teens with overnight RH recoveries 30-35% along slopes and ridges and around 50% valleys. Terrain driven up-slope and up-canyon winds will continue with NW down-canyon winds of 14-18 mph locally gusting to 25 mph late afternoon into the evening.

---

**OUTLOOK FOR FRIDAY & SATURDAY:** A gradual increase in mid level moisture will continue through the end of the week and when combined with the hot and unstable conditions during the afternoons will continue to increase the potential for PyroCumulus formation over the fire and additionally bring a slight chance of thunderstorms Fri with a better chance for isolated thunderstorms with minimal precipitation on Sat. Gusty SW to NW afternoon and evening winds along ridges and through channeled terrain gaps will continue with Min RHs in the lower to mid teens and overnight RH recoveries remaining poor along slopes and ridges.

---

Please email weather observations to [julia.ruthford@usda.gov](mailto:julia.ruthford@usda.gov) or text them to 530-440-4898. Thanks!



## FIRE BEHAVIOR FORECAST

<b>FORECAST NUMBER:</b> 05	<b>TYPE OF FIRE:</b> Wildfire
<b>FIRE NAME:</b> Shelly	<b>OPERATIONAL PERIOD:</b> 07/10 Day
<b>DATE ISSUED:</b> July 9, 2024	<b>TIME ISSUED:</b> 1830
<b>UNIT:</b> CA-KNF	<b>SIGNED:</b> /s/ Patrick Doyle, FBAN 530-310-3552

**WEATHER SUMMARY** (See Fire Wx Forecast)

**TOPOGRAPHY: Elevations:** 3900'-6,700' **Slopes:** 0%-100+% (0°-68°degrees)

**FUELS: Key Fuel Models, Fuel Moistures, FDR**

Grass/Shrub Timber	GS2 TU5	Forecasted PSA04: NFDR (Y)
<b>FDPM (1hr)</b>	4 % ▲ 1*	ERC: 62 (down 2)
<b>10-hr (%)</b>	5 % ▲ 1*	BI: 42 (down 2)
<b>100-hr (%)</b>	6 % ▲ 1*	*Note: FM %s in left column have been adjusted relative to Blue Ridge values.
<b>1000-hr(%)</b>	10 %*	
<b>Live Fuels (Seasonal grasses)</b>	¾ to fully cured	

**Fire Behavior (for new starts or unburned areas)**

**Probability of Ignition:** 92% Unshaded / 76% Shaded  
**Spotting Distance:** up to 0.5 mile (short range)  
 Values below use **40% slope** and assume upslope spread.

Fuel Model	Day		Night		
	FL (Ft.)	ROS (Ch/Hr)	Fuel Model	FL (Ft.)	ROS (Ch/Hr)
Grass/Shrub	5-21	23-39	GS2	1-17	1-39
Timber	1-10	1-16	TU5	1-10	1-16

Live fuel moistures in shrubs and trees, having passed green-up phase.

Blue Ridge – KNF (40203) / Predictive Service Area: NC04 -  
 Northwestern Mtn.  
 NC=No change, ▲up, ▼down

### FIRE BEHAVIOR

#### GENERAL:

- Another critical fire day: environmental conditions are in place that support large fire growth.
- Burning Index (BI) and Energy Release Component (ERC) fire danger indices for Predictive Services Area (PSA) NCO4-Northwest Mountains setting new maximum thresholds for time of year. Dead fuel moistures critically low; 100-hr and 1000-hr dead fuel moistures setting new minimums for PSA NC04.
- Look for transition in early- and late afternoon for increase winds and fire activity. When significant increases in fire behavior (torching, short range spotting and crowning) and rapid rates of spread have occurred. Which can continue into late evening or early morning.
- Watch out for when the smoke inversion breaks. If it does expect very active to potentially extreme fire behavior and spread to follow well into the evening. Until smoke inversion lifts or breaks, it will keep a lid on the fire, which will still be active.

#### SPECIFIC:

**DIVS A, B, C, D, E, F, G:** Active fire growth to the east in the Kidder and Patterson Creek, continuing to move into Mill Creek (north). Fuels continuity and composition of live and dead fuels will promote active growth through surface fire spread, spotting, and torching. Primary fire growth will be driven by fuel continuity, with daytime diurnal winds, and afternoon local ridgetop winds (W-SW to NW).

**DIVS T:** Fire spread in the area west of Shelly lake and backing into Pointers Gulch. Fire activity is being moderated by smoke inversion and sparse fuels from the 2017 Wallow fire. Fire spread will be dictated by fuels concentration, connectivity and thru spotting or roll-out into receptive fuels.

#### AIR OPERATIONS:

Inversion in the morning, air operations impacted by smoke.

Sunrise: 5:47am, Sunset: 8:46pm, Daylength: 14 hours, 58 minutes, 20 seconds (-1:10min)

#### SAFETY:

As fire burns through duff and root systems; rocks, boulders, stumps, and other objects can be released and roll downhill. Don't assume that because no one is working above you there is no danger of rolling objects.



## ***SAFETY MESSAGE***



*Fire fighter safety comes first on every fire, every time*

We are **ALL** accountable for **SAFE** behaviors  
For Day/Night Operations: **July 10, 2024**

### **WATCH OUT SITUATIONS**

#### **# 13 On a Hillside where rolling material can ignite fuel below.**

- Can you locate/construct a line to prevent material from rolling below?
- Will you get enough warning of rolling material to prevent being hit by it?
- Can you see where any material that rolls below you goes and what it does?
- Is the area free of large amounts of flashy fuels?
- Do you have two escape routes so you can go either way?

#### **To reduce the risks:**

- Post lookouts.
- Consider locating line in a defensible position.
- Talk about fires in steep terrain where you had material roll out below you and how you dealt with it.

### ***Communication (10 STANDRD FIREFIGHTING ORDERS)***

**#7** Maintain prompt communication with your forces, your supervisor, and adjoining forces.

**#8** Give Clear instructions and be sure they are understood.



# Everyone Gets a Briefing!

### **Driving**

Evaluate access and egress on driveways and forest road systems. During times of increased fire activity, do you have a plan? What is your escape route look like? P.A.C.E

**Primary Alternate Contingency Emergency**

**Prepared by:** Mike Seymour SOFC, Matt Lipson SOF1.



# ASSIGNMENT LIST (ICS 204 WF)

CONTROLLED UNCLASSIFIED  
INFORMATION//BASIC

<b>1. Incident Name:</b> <p style="text-align: center; font-size: 1.2em;"><b>SHELLY</b></p>	<b>2. Operational Period:</b> Date From: 07/10/24    Date To: 07/11/24 Time From: 0700        Time To: 0700	<b>3. Branch</b> <b>Division</b> <p style="text-align: center; font-size: 1.5em;"><b>X</b>                              <b>A</b></p>
<b>4. Operations Personnel:</b>		<b>Page 1 of 2</b> <b>Alpha</b>

Operations Section Chief: <b>J. Owings/S. Lauderdale/J. Flores(T)</b> Branch Director: <b>J. Walton(12), R. Wettstein(T)</b> Division/Group Supervisor: <b>G. Lowdermilk/S. Rushing(T)</b>	Night Ops: <b>R. Szczepanek</b> Branch Safety: Air Attack:
--	--

5. Resources Assigned:	** Resources Below in Bold are 12 Hour **					Hours	Reporting Location
Resource Identifier	ALS	LWD	Leader	Personnel	Request #		
HC1 TALLAC		7/17	<b>Betty</b>	19	<b>C-3</b>	<b>0700-1900</b>	
HC2IA SHASTA LAKE		7/17	<b>Bogdan</b>	22	<b>C-2</b>	<b>0700-1900</b>	
ENG3 KBM 2		7/22	<b>Vigil</b>	3	<b>E-128</b>	<b>0700-1900</b>	
ENG3 KBM		7/22	<b>Nunez</b>	3	<b>E-129</b>	<b>0700-1900</b>	
ENG6 FIRE SOLUTIONS		7/22	<b>Mestrovic</b>	3	<b>E-94</b>	<b>0700-1900</b>	
ENG6 RYAN FLORES 2		7/22	<b>Soares</b>	3	<b>E-95</b>	<b>0700-1900</b>	
ENG6 BLUFFDALE E694		7/22	<b>Reglia</b>	3	<b>E-149</b>	<b>0700-1900</b>	
DOZ2 DEAN SMILEY		7/21	<b>Smiley</b>	2	<b>E-81</b>	<b>1900-0700</b>	
WTT2 SHF 266		7/22	<b>Eason</b>	2	<b>E-178</b>	<b>0700-1900</b>	
FMOD HOMELAND		7/21	<b>Ingersoll</b>	2	<b>O-46</b>	<b>0700-1900</b>	
FMOD WEST COAST CUTTING 1		7/21	<b>Ancel</b>	2	<b>O-157</b>	<b>0700-1900</b>	
FMOD RED FLAG FIRE PROT.		7/21	<b>Smith</b>	2	<b>O-159</b>	<b>0700-1900</b>	
FMOD RED FLAG		7/22	<b>Fullerton</b>	2	<b>O-186</b>	<b>0700-1900</b>	
TFLD HAUPT		7/19	<b>Haupt</b>	1	<b>O-50</b>	<b>0700-1900</b>	
TFLD NESS JR		7/22	<b>Ness Jr</b>	1	<b>O-234</b>	<b>0700-1900</b>	

**6. Work Assignments:**  
 Task: Scout for opportunities and establish control lines from the A/B division break west towards Boulder Peak.  
 Purpose: Keep the fire in the smallest footprint possible to protect natural and cultural resources.  
 End State: Completed control lines safely, with the best chance of success to contain the fire.

**7. Special Instructions:**  
 Identify potential landing zones, sling sites, and spike camps.

**8. Communications**

Name	Ch	Function	Rx Freq	Rx Tone	Tx Freq	Tx Tone	Mode	Notes
NIFC C3	1	COMMAND	170.4250	(T3) 131.8	168.0750	(T3) 131.8	A	English Peak
CDF T14	P3.5	TACTICAL	159.3075	(T16) 192.8	159.3075	(T16) 192.8	A	
A/G TAC	14	A/G TAC	168.3750	0.0	168.3750	0.0	A	Overhead use only
CALCORD	15	TACTICAL	156.0750	(T6) 156.7	156.0750	(T6) 156.7	A	
AIRGUARD	16	A/G	168.6250	0.0	168.6250	(T1) 110.9	A	

**9. Prepared by: Name:** M. Yeun/R. Resnick/T.Hullquist(T)    RESL    Signature: \_\_\_\_\_  
**ICS 204**                                      Date/Time: 7/9/2024    2200                                      Personnel Count: 70



# ASSIGNMENT LIST (ICS 204 WF)

CONTROLLED UNCLASSIFIED  
INFORMATION/BASIC

<b>1. Incident Name:</b>	<b>2. Operational Period:</b>	<b>3. Branch</b>	<b>Division</b>
<b>SHELLY</b>	Date From: 07/10/24    Date To: 07/11/24 Time From: 0700    Time To: 0700	<b>X</b>	<b>A</b>
<b>4. Operations Personnel:</b>		Page 2 of 2	Alpha

Operations Section Chief: <b>J. Owings/S. Lauderdale/J. Flores(T)</b> Branch Director: <b>J. Walton(12), R. Wettstein(T)</b> Division/Group Supervisor: <b>G. Lowdermilk/S. Rushing(T)</b>	Night Ops: <b>R. Szczepanek</b> Branch Safety: Air Attack:
--	--

5. Resources Assigned:		** Resources Below in Bold are 12 Hour **						
Resource Identifier	ALS	LWD	Leader	Personnel	Request #	Hours	Reporting Location	
<b>SOFR BRYANT</b>			<b>Bryant</b>	<b>1</b>	<b>O-147</b>	<b>0700-1900</b>		
<b>REMS 1</b>	<b>X</b>		<b>Walker</b>	<b>4</b>	<b>O-54</b>	<b>0700-1900</b>		
<b>EMPF OWEN</b>		<b>7/21</b>	<b>Bryan</b>	<b>1</b>	<b>O-92</b>	<b>0700-1900</b>		
<b>EMPF BANKS</b>		<b>7/22</b>	<b>Banks</b>	<b>1</b>	<b>O-202</b>	<b>0700-1900</b>		
<b>EMTF NICHOLS</b>		<b>7/21</b>	<b>Nichols</b>	<b>1</b>	<b>O-87</b>	<b>0700-1900</b>		
<b>REAF STEINWACHS</b>		<b>7/20</b>	<b>Steinwachs</b>	<b>1</b>	<b>O-178</b>	<b>0700-1900</b>		

**6. Work Assignments:**  
 Task: Scout for opportunities and establish control lines from the A/B division break west towards Boulder Peak.  
 Purpose: Keep the fire in the smallest footprint possible to protect natural and cultural resources.  
 End State: Completed control lines safely, with the best chance of success to contain the fire.

**7. Special Instructions:**  
 Identify potential landing zones, sling sites, and spike camps.

**8. Communications**

Name	Ch	Function	Rx Freq	Rx Tone	Tx Freq	Tx Tone	Mode	Notes
NIFC C3	1	COMMAND	170.4250	(T3) 131.8	168.0750	(T3) 131.8	A	English Peak
CDF T14	P3.5	TACTICAL	159.3075	(T16) 192.8	159.3075	(T16) 192.8	A	
A/G TAC	14	A/G TAC	168.3750	0.0	168.3750	0.0	A	Overhead use only
CALCORD	15	TACTICAL	156.0750	(T6) 156.7	156.0750	(T6) 156.7	A	
AIRGUARD	16	A/G	168.6250	0.0	168.6250	(T1) 110.9	A	

**9. Prepared by: Name:** M. Yeun/R. Resnick/T.Hullquist(T)    RESL    Signature: \_\_\_\_\_

ICS 204    Date/Time: 7/9/2024 2200    Personnel Count: 9

# ASSIGNMENT LIST (ICS 204 WF)

CONTROLLED UNCLASSIFIED  
INFORMATION/BASIC

<b>1. Incident Name:</b> <b>SHELLY</b>	<b>2. Operational Period:</b> Date From: 07/10/24    Date To: 07/11/24 Time From: 0700    Time To: 0700	<b>3. Branch</b> <b>Division</b> <b>X</b> <b>B</b>
		<b>Page 1 of 2</b> <b>Bravo</b>

<b>4. Operations Personnel:</b> Operations Section Chief: <b>J. Owings/S. Lauderdale/J. Flores(T)</b> Branch Director: <b>J. Walton(12), R. Wettstein(T)</b> Division/Group Supervisor: <b>R. Valles</b>	Night Ops: <b>R. Szczepanek</b> Branch Safety: Air Attack:
---	--

5. Resources Assigned:	** Resources Below in Bold are 12 Hour **							
Resource Identifier	ALS	LWD	Leader	Personnel	Request #	Hours	Reporting Location	
STC SHU 9242C			SMITH, MARCUS	18	E-20132	0700-0700	Mill Cr Rd X Emigrant Cr Rd	
STC TBD						0700-0700	Mill Cr Rd X Emigrant Cr Rd	
STC TBD						0700-0700	Mill Cr Rd X Emigrant Cr Rd	
<b>T/F XST 4202 (3,3,6,6,WT)</b>			<b>WILLIAMS, TRENT</b>	<b>18</b>	<b>E-20188</b>	<b>0700-1900</b>	<b>Mill Cr Rd X Emigrant Cr Rd</b>	
T/F TBD						0700-0700	Mill Cr Rd X Emigrant Cr Rd	
T/F TBD						0700-0700	Mill Cr Rd X Emigrant Cr Rd	
STG HUU 9126G (CDCR)			SANDERS, BRENTON	34	C-20002	0700-0700	Mill Cr Rd X Emigrant Cr Rd	
STG AEU 9271G (FF1)					E	0700-0700	Mill Cr Rd X Emigrant Cr Rd	
STL LNU 9142L			MADDOCKS, JEFF		E-20009	0700-0700	Mill Cr Rd X Emigrant Cr Rd	
DOZ PVT E-20076 R&H			Seabourn		E-20076	0700-0700	Mill Cr Rd X Emigrant Cr Rd	
DOZ PVT E-20077			Archibald		E-20077	0700-0700	Mill Cr Rd X Emigrant Cr Rd	
DOZ PVT E-20110 - ACT					E-20110	0700-0700	Mill Cr Rd X Emigrant Cr Rd	
DOZ TBD						0700-0700	Mill Cr Rd X Emigrant Cr Rd	
DOZ TBD						0700-0700	Mill Cr Rd X Emigrant Cr Rd	
W/T PVT E-20045 - HURL					E-20045	0700-0700	Mill Cr Rd X Emigrant Cr Rd	
W/T PVT E-20046 - HURL					E-20046	0700-0700	Mill Cr Rd X Emigrant Cr Rd	
W/T PVT E-20050 - FIVE			BENNETT, ASA		E-20050	0700-0700	Mill Cr Rd X Emigrant Cr Rd	
W/T PVT E-20195 - CULP					E-20195	0700-0700	Mill Cr Rd X Emigrant Cr Rd	

**6. Work Assignments:**  
 Construct Contingency line from Mill Creek to Scott River.  
 Plan Secondary control lines, begin if possible.  
 Prepare for Firing Operations.

**7. Special Instructions:**

8. Communications								
Name	Ch	Function	Rx Freq	Rx Tone	Tx Freq	Tx Tone	Mode	Notes
NIFC C3	1	COMMAND	170.4250	(T3) 131.8	168.0750	(T3) 131.8	A	English Peak
CDF T15	P3.6	TACTICAL	151.1825	(T16) 192.8	151.1825	(T16) 192.8	A	
A/G TAC	14	A/G TAC	168.3750	0.0	168.3750	0.0	A	Overhead use only
CALCORD	15	TACTICAL	156.0750	(T6) 156.7	156.0750	(T6) 156.7	A	
AIRGUARD	16	A/G	168.6250	0.0	168.6250	(T1) 110.9	A	

**9. Prepared by: Name:** M. Yeun/R. Resnick/T.Hullquist(T)    RESL  
 Signature: \_\_\_\_\_  
**ICS 204**    Date/Time: 7/9/2024 2200    Personnel Count: 70





# ASSIGNMENT LIST (ICS 204 WF)

CONTROLLED UNCLASSIFIED  
INFORMATION//BASIC

<b>1. Incident Name:</b> <b>SHELLY</b>		<b>2. Operational Period:</b> Date From: 07/10/24    Date To: 07/11/24 Time From: 0700    Time To: 0700				<b>3. Branch</b> <b>X</b>		<b>Division</b> <b>C</b>	
<b>4. Operations Personnel:</b>						<b>Page 1 of 2</b>		<b>Charlie</b>	
Operations Section Chief: <b>J. Owings/S. Lauderdale/J. Flores(T)</b> Branch Director: <b>J. Walton(12), R. Wettstein(T)</b> Division/Group Supervisor: <b>S. Clement</b>					Night Ops: <b>R. Szczepanek</b> Branch Safety: Air Attack:				
<b>5. Resources Assigned:</b>		<b>** Resources Below in Bold are 12 Hour **</b>							
Resource Identifier	ALS	LWD	Leader	Personnel	Request #	Hours	Reporting Location		
STC LNU 9143C			MILLOSOVICH, STEVE	18 +/-	E-20007	0700-0700	S. Kidder Cr Rd X HWY3		
STC SHU 9244C			KEOWN, JACOB	18 +/-	E-20055	0700-0700	S. Kidder Cr Rd X HWY3		
STF TBD						0700-0700	S. Kidder Cr Rd X HWY3		
STF TBD						0700-0700	S. Kidder Cr Rd X HWY3		
<b>ENG6 NPS 675</b>					<b>E-64</b>	<b>0700-1900</b>	<b>S. Kidder Cr Rd X HWY3</b>		
STG SHU 9245G (CNA)			RACKLEY, D	33 +/-	C-20004	0700-0700	S. Kidder Cr Rd X HWY3		
STG SCU 9163G (FF, CMD)			HOFFMAN, ERIK	33 +/-	C-20005	0700-0700	S. Kidder Cr Rd X HWY3		
STG TBD						0700-0700	S. Kidder Cr Rd X HWY3		
STL LMU 9222 L			NEEDLER, TRAVIS		E-20023	0700-0700	S. Kidder Cr Rd X HWY3		
DZR2 SKU 2640						0700-0700	S. Kidder Cr Rd X HWY3		
DZR2 SKU 2643						0700-0700	S. Kidder Cr Rd X HWY3		
DOZ PVT E-20029 BACK			Owen		E-20029	0700-0700	S. Kidder Cr Rd X HWY3		
DOZ PVT E-20072 MATANDY			Melendez		E-20072	0700-0700	S. Kidder Cr Rd X HWY3		
DOZ PVT E-20075 EASLEY			Easley		E-20075	0700-0700	S. Kidder Cr Rd X HWY3		
DOZ PVT E-20079 SPRAT			Spratt		E-20079	0700-0700	S. Kidder Cr Rd X HWY3		
WT PVT E-20010			ZUARBIER, JOHN		E-20010	0700-0700	S. Kidder Cr Rd X HWY3		
W/T PVT E-20011 - BURKE			KELLY, KEN		E-20011	0700-0700	S. Kidder Cr Rd X HWY3		
W/T PVT E-20012 - HD			HOWELL, DERRIN		E-20012	0700-0700	S. Kidder Cr Rd X HWY3		
W/T PVT E-20043 - JOHN			Johnson		E-20043	0700-0700	S. Kidder Cr Rd X HWY3		
W/T PVT E-20044 - QUART			Selvage		E-20044	0700-0700	S. Kidder Cr Rd X HWY3		
<b>6. Work Assignments:</b> Plan Secondary control lines, begin if possible. Prepare indirect control lines for possible firing operation. Improve and hold control lines. Prepare structures for defensive actions.									
<b>7. Special Instructions:</b> Only use water from metered hydrant in Fort Jones unless conducting direct suppression around residential areas.									
<b>8. Communications</b>									
Name	Ch	Function	Rx Freq	Rx Tone	Tx Freq	Tx Tone	Mode	Notes	
NIFC C3	1	COMMAND	170.4250	(T3) 131.8	168.0750	(T3) 131.8	A	English Peak	
CDF T24	P3.7	TACTICAL	151.3325	(T16) 192.8	151.3325	(T16) 192.8	A		
AIRGUARD	16	A/G	168.6250	0.0	168.6250	(T1) 110.9	A	Emergency Use Only	
CALCORD	15	TACTICAL	156.0750	(T6) 156.7	156.0750	(T6) 156.7	A		
AIRGUARD	16	A/G	168.6250	0.0	168.6250	(T1) 110.9	A		
<b>9. Prepared by: Name:</b> M. Yeun/R. Resnick/T.Hullquist(T)    RESL									
Signature: _____									
<b>ICS 204</b>		Date/Time: 7/9/2024 2200				Personnel Count: 102			

# ASSIGNMENT LIST (ICS 204 WF)

CONTROLLED UNCLASSIFIED  
INFORMATION//BASIC

<b>1. Incident Name:</b> <div style="text-align: center; font-weight: bold; font-size: 1.2em;">SHELLY</div>	<b>2. Operational Period:</b> Date From: 07/10/24    Date To: 07/11/24 Time From: 0700            Time To: 0700	<b>3. Branch</b> <b>Division</b> <div style="text-align: center; font-size: 1.5em; font-weight: bold;">X                                      C</div>
<b>4. Operations Personnel:</b>		Page 2 of 2                      Charlie

Operations Section Chief: <b>J. Owings/S. Lauderdale/J. Flores(T)</b> Branch Director: <b>J. Walton(12), R. Wettstein(T)</b> Division/Group Supervisor: <b>S. Clement</b>	Night Ops: <b>R. Szczepanek</b> Branch Safety: Air Attack:
---	--

5. Resources Assigned:		** Resources Below in Bold are 12 Hour **						
Resource Identifier	ALS	LWD	Leader	Personnel	Request #	Hours	Reporting Location	
FELB TBD						0700-0700	S. Kidder Cr Rd X HWY3	
FELB TBD						0700-0700	S. Kidder Cr Rd X HWY3	
<b>FALM PVT O-20145 - LIB</b>			<b>SCHROEDER, BRANDON</b>		<b>O-20145</b>	<b>0700-1900</b>	<b>S. Kidder Cr Rd X HWY3</b>	
HEQB TBD						0700-0700	S. Kidder Cr Rd X HWY3	

**6. Work Assignments:**  
 Plan Secondary control lines, begin if possible.  
 Prepare indirect control lines for possible firing operation.  
 Improve and hold control lines.  
 Prepare structures for defensive actions.

**7. Special Instructions:**  
 Only use water from metered hydrant in Fort Jones unless conducting direct suppression around residential areas.

8. Communications								
Name	Ch	Function	Rx Freq	Rx Tone	Tx Freq	Tx Tone	Mode	Notes
NIFC C3	1	COMMAND	170.4250	(T3) 131.8	168.0750	(T3) 131.8	A	English Peak
CDF T24	P3.7	TACTICAL	151.3325	(T16) 192.8	151.3325	(T16) 192.8	A	
AIRGUARD	16	A/G	168.6250	0.0	168.6250	(T1) 110.9	A	Emergency Use Only
CALCORD	15	TACTICAL	156.0750	(T6) 156.7	156.0750	(T6) 156.7	A	
AIRGUARD	16	A/G	168.6250	0.0	168.6250	(T1) 110.9	A	

**9. Prepared by: Name:** M. Yeun/R. Resnick/T.Hullquist(T)    RESL                      Signature: \_\_\_\_\_

<b>ICS 204</b>	Date/Time: 7/9/2024    2200	Personnel Count:    0
----------------	-----------------------------	-----------------------

# ASSIGNMENT LIST (ICS 204 WF)

CONTROLLED UNCLASSIFIED  
INFORMATION//BASIC

<b>1. Incident Name:</b> <b>SHELLY</b>		<b>2. Operational Period:</b> Date From: 07/10/24    Date To: 07/11/24 Time From: 0700    Time To: 0700				<b>3. Branch</b> <b>X</b>		<b>Division</b> <b>D</b>	
<b>4. Operations Personnel:</b>						<b>Page 1 of 1</b>		<b>Delta</b>	
Operations Section Chief: <b>J. Owings/S. Lauderdale/J. Flores(T)</b> Branch Director: <b>J. Walton(12), R. Wettstein(T)</b> Division/Group Supervisor: <b>S. Chapman(9247C)</b>					Night Ops: <b>R. Szczepanek</b> Branch Safety: Air Attack:				
<b>5. Resources Assigned:</b>		<b>** Resources Below in Bold are 12 Hour **</b>							
Resource Identifier	ALS	LWD	Leader	Personnel	Request #	Hours	Reporting Location		
STC SHU 9247C			CHAPMAN, STEVEN	18	E-20051	0700-0700	S. Kidder Cr Rd X HWY 3		
STC LMU 9223C			<b>WHITCHURCH, ROBERT</b>	18	E-20004	0700-0700	S. Kidder Cr Rd X HWY 3		
STC TBD						0700-0700	S. Kidder Cr Rd X HWY 3		
STG TGU 9258G (FF1)			ZUCKERMAN, ANDY	37	C-20000	0700-0700	S. Kidder Cr Rd X HWY 3		
STG SKU 9263G (CDCR)			HOFFMANN, JEFF	33 +/-	C-11	0700-0700	S. Kidder Cr Rd X HWY 3		
STG TBD						0700-0700	S. Kidder Cr Rd X HWY 3		
STG TBD						0700-0700	S. Kidder Cr Rd X HWY 3		
DOZ PVT E-20080 HIGH					E-20080	0700-0700	S. Kidder Cr Rd X HWY 3		
DOZ PVT E-20081 INDEP					E-20081	0700-0700	S. Kidder Cr Rd X HWY 3		
W/T PVT E-20088 - T & S					E-20088	0700-0700	S. Kidder Cr Rd X HWY 3		
W/T PVT E-20192 - CON					E-20192	0700-0700	S. Kidder Cr Rd X HWY 3		
W/T PVT E-20193			RICH		E-20193	0700-0700	S. Kidder Cr Rd X HWY 3		
W/T PVT E-20200 - FIRE			TROEDEL, BRIAN		E-20200	0700-0700	S. Kidder Cr Rd X HWY 3		
W/T TBD						0700-0700	S. Kidder Cr Rd X HWY 3		
<b>6. Work Assignments:</b> Plan Secondary control lines, begin if possible. Prepare indirect control lines for possible firing operation. Prepare Structure Defense Plan. Prepare structures for defensive actions.									
<b>7. Special Instructions:</b> Only use water from metered hydrant in Fort Jones unless conducting direct suppression around residential areas.									
<b>8. Communications</b>									
Name	Ch	Function	Rx Freq	Rx Tone	Tx Freq	Tx Tone	Mode	Notes	
NIFC C3	1	COMMAND	170.4250	(T3) 131.8	168.0750	(T3) 131.8	A	English Peak	
CDF T35	P3.8	TACTICAL	151.4675	(T17) 67.0	151.4675	(T17) 67.0	A		
A/G TAC	14	A/G TAC	168.3750	0.0	168.3750	0.0	A	Overhead use only	
CALCORD	15	TACTICAL	156.0750	(T6) 156.7	156.0750	(T6) 156.7	A		
AIRGUARD	16	A/G	168.6250	0.0	168.6250	(T1) 110.9	A		
<b>9. Prepared by: Name:</b> M. Yeun/R. Resnick/T.Hullquist(T)    RESL Signature: _____									
<b>ICS 204</b>		Date/Time: 7/9/2024    2200				Personnel Count: 106			



# ASSIGNMENT LIST (ICS 204 WF)

CONTROLLED UNCLASSIFIED  
INFORMATION/BASIC

<b>1. Incident Name:</b>	<b>2. Operational Period:</b>	<b>3. Branch</b>	<b>Division</b>
<b>SHELLY</b>	Date From: 07/10/24      Date To: 07/11/24 Time From: 0700              Time To: 0700	<b>XX</b>	<b>E</b>

**4. Operations Personnel:** Page 1 of 1      Echo

Operations Section Chief: <b>J. Owings/S. Lauderdale/J. Flores(T)</b>	Night Ops: <b>R. Szczepanek</b>
Branch Director: <b>T. Pederson, T. Richter(12)</b>	Branch Safety:
Division/Group Supervisor: <b>S. Galvez</b>	Air Attack:

5. Resources Assigned:	** Resources Below in Bold are 12 Hour **						
Resource Identifier	ALS	LWD	Leader	Personnel	Request #	Hours	Reporting Location
STC LNU 9141C			LEE, THOMAS	18 +/-	E-20006	0700-0700	Fort Jones CalFire Stn
STC CZU 9170C			BONFANTE, DAN	21	E-20005	0700-0700	Fort Jones CalFire Stn
STC TBD						0700-0700	Fort Jones CalFire Stn
STC TBD						0700-0700	Fort Jones CalFire Stn
HC1 HIGH ROCK 1		7/18	Fluet	15	C-14	0700-0700	Fort Jones CalFire Stn
HC1 HIGH ROCK 2		7/18	McElwain	15	C-15	0700-0700	Fort Jones CalFire Stn
STL MEU 9118L			WADDINGTON		E-20028	0700-0700	Fort Jones CalFire Stn
STL TGU 9250L			WILBANKS, CLIFF		E-20008	0700-0700	Fort Jones CalFire Stn
DZR2 PVT E-20022 JOHNSON					E-20022	0700-0700	Fort Jones CalFire Stn
DOZ PVT E-20031 DVBE			Tucker		E-20031	0700-0700	Fort Jones CalFire Stn
DOZ PVT E-20032 MATANDY			Harkness		E-20032	0700-0700	Fort Jones CalFire Stn
DOZ PVT E-20073 SKINNERS			Skinner		E-20073	0700-0700	Fort Jones CalFire Stn
W/T SCOTT VLY 1530					E-20149	0700-0700	Fort Jones CalFire Stn
W/T PVT E-20013 - AMERI					E-20013	0700-0700	Fort Jones CalFire Stn
W/T PVT E-20109 - TRINITY			Taylor		E-20109	0700-0700	Fort Jones CalFire Stn
W/T PVT E-20196 - BLACK					E-20196	0700-0700	Fort Jones CalFire Stn
W/T PVT E-20201 - DIAMOND					E-20201	0700-0700	Fort Jones CalFire Stn
<b>FALM PVT O-20144 - CAMP</b>					<b>O-20144</b>	<b>0700-1900</b>	<b>Fort Jones CalFire Stn</b>
FALM TBD						0700-0700	Fort Jones CalFire Stn
<b>REAF MASON</b>		7/19	<b>Mason</b>	1	<b>O-13</b>	<b>0700-1900</b>	<b>Fort Jones CalFire Stn</b>

**6. Work Assignments:**  
Construct and improve control lines.

**7. Special Instructions:**

**8. Communications**

Name	Ch	Function	Rx Freq	Rx Tone	Tx Freq	Tx Tone	Mode	Notes
NIFC C3	1	COMMAND	170.4250	(T3) 131.8	168.0750	(T3) 131.8	A	English Peak
NIFC T1	5	TACTICAL	168.0500	(T3) 131.8	168.0500	(T3) 131.8	A	
CALCORD	15	TACTICAL	156.0750	(T6) 156.7	156.0750	(T6) 156.7	A	Medical Evac Tone 6
CALCORD	15	TACTICAL	156.0750	(T6) 156.7	156.0750	(T6) 156.7	A	
AIRGUARD	16	A/G	168.6250	0.0	168.6250	(T1) 110.9	A	

**9. Prepared by: Name:** M. Yeun/R. Resnick/T.Hullquist(T)      RESL  
Signature: \_\_\_\_\_

**ICS 204**      Date/Time: 7/9/2024      2200      Personnel Count: 69

# ASSIGNMENT LIST (ICS 204 WF)

CONTROLLED UNCLASSIFIED  
INFORMATION//BASIC

<b>1. Incident Name:</b>	<b>2. Operational Period:</b>	<b>3. Branch</b>	<b>Division</b>
<b>SHELLY</b>	Date From: 07/10/24      Date To: 07/11/24 Time From: 0700              Time To: 0700	<b>XX</b>	<b>F</b>
<b>4. Operations Personnel:</b>		Page 1 of 1	Foxtrot

Operations Section Chief: <b>J. Owings/S. Lauderdale/J. Flores(T)</b> Branch Director: <b>T. Pederson, T. Richter(12)</b> Division/Group Supervisor: <b>D. Helgeson</b>	Night Ops: <b>R. Szczepanek</b> Branch Safety: Air Attack:
---	--

5. Resources Assigned:	** Resources Below in Bold are 12 Hour **						
Resource Identifier	ALS	LWD	Leader	Personnel	Request #	Hours	Reporting Location
<b>STG LAC 1183G</b>		<b>7/22</b>	<b>Morgan</b>	31	<b>C-45</b>	<b>0700-1900</b>	
<b>STG LAC 1176G</b>		<b>7/22</b>	<b>Souder</b>	29	<b>C-46</b>	<b>0700-1900</b>	
<b>ENG3 KETCHUM E101</b>		<b>7/22</b>	<b>Lee</b>	4	<b>E-127</b>	<b>0700-1900</b>	
<b>DOZ2 BAR-G 1</b>		<b>7/21</b>	<b>Hummel</b>	2	<b>E-85</b>	<b>0700-1900</b>	
<b>DOZ2 BAR-G 2</b>		<b>7/21</b>	<b>Simonis</b>	1	<b>E-86</b>	<b>0700-1900</b>	
<b>DOZ2 PVT JIM JOHNSON</b>		<b>7/22</b>	<b>Horne</b>	2	<b>E-214</b>	<b>0700-1900</b>	
<b>HEQB GAILEY</b>		<b>7/22</b>	<b>Gailey</b>	1	<b>O-228</b>	<b>0700-1900</b>	
<b>HEQB(T) ROAM</b>		<b>7/22</b>	<b>Roam</b>	1	<b>O-244</b>	<b>0700-1900</b>	
<b>SOFR PFISTER</b>			<b>Pfister</b>	1	<b>O-146</b>	<b>0700-1900</b>	
<b>EMPF GARCIA</b>		<b>7/22</b>	<b>Garcia</b>	1	<b>O-195</b>	<b>0700-1900</b>	
<b>EMPF SCHROTHE</b>		<b>7/22</b>	<b>Schrothe</b>		<b>O-270</b>	<b>0700-1900</b>	
<b>EMTF GENEVICZ</b>		<b>7/23</b>	<b>Genevicz</b>		<b>O-255</b>	<b>0700-1900</b>	
<b>EMTF SIEMANN</b>			<b>Siemann</b>	1	<b>O-273</b>	<b>0700-1900</b>	

**6. Work Assignments:**  
 Task: Scout, identify, and establish control lines from DIV E/F break south towards Etna Summit.  
 Purpose: Keep the fire in the smallest footprint possible to protect structures in the French Creek area off of the Sawyers Bar road.  
 End State: Safely completed control lines to have the highest probability to contain the fire.

**7. Special Instructions:**  
 Only use water from metered hydrant in Fort Jones unless conducting direct suppression around residential areas.

**8. Communications**

Name	Ch	Function	Rx Freq	Rx Tone	Tx Freq	Tx Tone	Mode	Notes
NIFC C3	1	COMMAND	170.4250	(T3) 131.8	168.0750	(T3) 131.8	A	English Peak
NIFC T2	6	TACTICAL	168.2000	(T3) 131.8	168.2000	(T3) 131.8	A	
A/G TAC	14	A/G TAC	168.3750	0.0	168.3750	0.0	A	Overhead use only
CALCORD	15	TACTICAL	156.0750	(T6) 156.7	156.0750	(T6) 156.7	A	
AIRGUARD	16	A/G	168.6250	0.0	168.6250	(T1) 110.9	A	

**9. Prepared by: Name:** M. Yeun/R. Resnick/T.Hullquist(T)      RESL  
 Signature: \_\_\_\_\_

**ICS 204**      Date/Time: 7/9/2024      2200      Personnel Count: 74

# ASSIGNMENT LIST (ICS 204 WF)

CONTROLLED UNCLASSIFIED  
INFORMATION//BASIC

<b>1. Incident Name:</b> <p style="text-align: center; font-size: 1.2em;"><b>SHELLY</b></p>	<b>2. Operational Period:</b> Date From: 07/10/24    Date To: 07/11/24 Time From: 0700        Time To: 0700	<b>3. Branch</b> <b>Division</b> <p style="text-align: center; font-size: 1.5em;"><b>XX</b>                              <b>G</b></p> <p style="text-align: center;">Page 1 of 1                      <b>Golf</b></p>
--	---	--

<b>4. Operations Personnel:</b> Operations Section Chief: <b>J. Owings/S. Lauderdale/J. Flores(T)</b> Branch Director: <b>T. Pederson, T. Richter(12)</b> Division/Group Supervisor: <b>A. Luna/R. Flitt(T)</b>	Night Ops: <b>R. Szczepanek</b> Branch Safety: Air Attack:
--	--

5. Resources Assigned:	** Resources Below in Bold are 12 Hour **						
Resource Identifier	ALS	LWD	Leader	Personnel	Request #	Hours	Reporting Location
HC1 MAD RIVER		7/18	<b>Esquirel</b>	21	<b>C-13</b>	<b>0700-1900</b>	
HC2IA MODOC		7/17	<b>Hendricks</b>	19	<b>C-1</b>	<b>0700-1900</b>	
HC2IA HAPPY CAMP 2		7/21	<b>Goodwin</b>	20	<b>C-27</b>	<b>0700-1900</b>	
WTS2 KENT JOHNSON			<b>Brown</b>	1	<b>E-92</b>	<b>0700-1900</b>	
FMOD AFT		7/19	<b>Smith</b>	2	<b>O-45</b>	<b>0700-1900</b>	
FMOD C&K WILDLAND 1		7/21	<b>Schuyler</b>	2	<b>O-155</b>	<b>0700-1900</b>	
FMOD C&K WILDLAND 2		7/21	<b>Pederson</b>	2	<b>O-156</b>	<b>0700-1900</b>	
FMOD WEST COAST CUTTING 2		7/20	<b>Agee</b>	2	<b>O-158</b>	<b>0700-1900</b>	
FMOD PACIFIC RIDGELINE		7/21	<b>Miller</b>	2	<b>C-161</b>	<b>0700-1900</b>	
FMOD NORTH ZONE FALLERS 1		7/21	<b>Hall</b>	2	<b>O-187</b>	<b>0700-1900</b>	
FELB SKUSTAD		7/21	<b>Skustad</b>	1	<b>O-47</b>	<b>0700-1900</b>	
SOFR CHUNG		7/21	<b>Chung</b>	1	<b>O-39</b>	<b>0700-1900</b>	
REMS XLC1			<b>Sepulveda</b>	4	<b>O-251</b>	<b>0700-1900</b>	
EMPF SIMPSON		7/21	<b>Simpson</b>	1	<b>O-90</b>	<b>0700-1900</b>	
EMTF MARTING		7/22	<b>Marting</b>	1	<b>O-89</b>	<b>0700-1900</b>	

**6. Work Assignments:**  
 Task: Scout for opportunities and establish control lines from Etna Summit west utilizing geographical features and historical control lines towards Snoozers Ridge.  
 Purpose: Keep the fire in the smallest footprint possible to protect structures in the Music Creek drainage, cultural and natural resources.  
 End State: Safely completed control lines providing the highest probability to contain the fire.

**7. Special Instructions:**  
 24-hour resources contact Night Ops for any issues or direction after 1900.  
 DIVS and DIVS(T) will spike on Div G.  
 Backhaul trash and excess equipment to helibase daily.  
 Identify potential landing zones, sling sites, and spike camps.

**8. Communications**

Name	Ch	Function	Rx Freq	Rx Tone	Tx Freq	Tx Tone	Mode	Notes
NIFC C3	1	COMMAND	170.4250	(T3) 131.8	168.0750	(T3) 131.8	A	English Peak
NIFC T3	7	TACTICAL	168.6000	(T3) 131.8	168.6000	(T3) 131.8	A	
A/G TAC	14	A/G TAC	168.3750	0.0	168.3750	0.0	A	Overhead use only
CALCORD	15	TACTICAL	156.0750	(T6) 156.7	156.0750	(T6) 156.7	A	
AIRGUARD	16	A/G	168.6250	0.0	168.6250	(T1) 110.9	A	

**9. Prepared by: Name:** M. Yeun/R. Resnick/T.Hullquist(T)    RESL  
 Signature: \_\_\_\_\_  
 ICS 204    Date/Time: 7/9/2024    2200    Personnel Count: 81



# ASSIGNMENT LIST (ICS 204 WF)

CONTROLLED UNCLASSIFIED  
INFORMATION//BASIC

<b>1. Incident Name:</b>	<b>2. Operational Period:</b>	<b>3. Branch</b>	<b>Division</b>
<b>SHELLY</b>	Date From: 07/10/24    Date To: 07/11/24 Time From: 0700    Time To: 0700	<b>XX</b>	<b>T</b>
<b>4. Operations Personnel:</b>		Page 1 of 1	Tango

Operations Section Chief: <b>J. Owings/S. Lauderdale/J. Flores(T)</b> Branch Director: <b>T. Pederson, T. Richter(12)</b> Division/Group Supervisor: <b>R. Noxon/J. Bird(T)</b>	Night Ops: <b>R. Szczepanek</b> Branch Safety: Air Attack:
---	--

5. Resources Assigned:	** Resources Below in Bold are 12 Hour **							
Resource Identifier	ALS	LWD	Leader	Personnel	Request #	Hours	Reporting Location	
HC1 BLUE RIDGE		7/16	<b>Sherman</b>	24	<b>C-17</b>	0700-1900	ICP	
HC1 SANTA FE		7/19	<b>Simpson</b>	20	<b>C-19</b>	0700-1900	ICP	
REDDING SMOKEJUMPERS		7/17	<b>Johnson</b>	8		0700-1900	ICP	
HC2IA FIRESTORM 5B		7/9	<b>Foster</b>	20	<b>C-5</b>	0700-1900	ICP	
PACK EDWARDS			<b>Andrews</b>			0700-1900	ICP	
EMTP SINCLAIR	X	7/20	<b>Sinclair</b>	1	<b>O-91</b>	0700-1900	ICP	
EMPF CRUMPACKER		7/22	<b>Crumpacker</b>	1	<b>O-199</b>	0700-1900	ICP	
EMTF FARRER		7/22	<b>Farrer</b>	1	<b>O-86</b>	0700-1900	ICP	
EMTF WOOTEN		7/21	<b>Wooten</b>	1	<b>O-88</b>	0700-1900	ICP	
REAF LUDT		7/22	<b>Ludt</b>	1	<b>O-177</b>	0700-1900	ICP	
REAF DIAZ		7/22	<b>Diaz</b>	1	<b>O-246</b>	0700-1900	ICP	

**6. Work Assignments:**

Task: Improve Right Hand Fork of Salmon trails for crew access. Identify holding opportunities of Trail 4931 and Yellow Dog Ridge. Provide structure protection in the North Fork of Salmon River. Brush roads 40N42 and 40N51. Seek for opportunities of ridges keeping the fire off of Sawyers Bar road.

Purpose: Keep the fire in the smallest footprint possible to protect private property and structures along the North Fork of the Salmon River drainage, cultural and natural resources.

End State: Safely completed control lines providing the highest probability to contain the fire.

**7. Special Instructions:**

24-hour resources contact Night Ops for any issues or direction after 1900.

Backhaul trash and excess equipment to helibase daily.

Identify potential landing zones, sling sites, and spike camps.

**8. Communications**

Name	Ch	Function	Rx Freq	Rx Tone	Tx Freq	Tx Tone	Mode	Notes
NIFC C3	1	COMMAND	170.4250	(T3) 131.8	168.0750	(T3) 131.8	A	English Peak
NIFC T4	8	TACTICAL	166.7250	(T3) 131.8	166.7250	(T3) 131.8	A	
A/G TAC	14	A/G TAC	168.3750	0.0	168.3750	0.0	A	Overhead use only
CALCORD	15	TACTICAL	156.0750	(T6) 156.7	156.0750	(T6) 156.7	A	
AIRGUARD	16	A/G	168.6250	0.0	168.6250	(T1) 110.9	A	

**9. Prepared by: Name:** M. Yeun/R. Resnick/T.Hullquist(T)    RESL    Signature: \_\_\_\_\_

**ICS 204**    Date/Time: 7/9/2024 2200    Personnel Count: 78

# ASSIGNMENT LIST (ICS 204 WF)

CONTROLLED UNCLASSIFIED  
INFORMATION//BASIC

<b>1. Incident Name:</b>	<b>2. Operational Period:</b>	<b>3. Branch</b>	<b>Division</b>
<b>SHELLY</b>	Date From: 07/10/24    Date To: 07/11/24 Time From: 0700    Time To: 0700	<b>XX</b>	<b>Night</b>

<b>4. Operations Personnel:</b>		Page 1 of 1
Operations Section Chief: <b>J. Owings/S. Lauderdale/J. Flores(T)</b> Branch Director: <b>T. Pederson, T. Richter(12)</b> Division/Group Supervisor: <b>TBD</b>	Night Ops: <b>R. Szczepanek</b> Branch Safety: Air Attack:	

5. Resources Assigned:	** Resources Below in Bold are 12 Hour **						
Resource Identifier	ALS	LWD	Leader	Personnel	Request #	Hours	Reporting Location
<b>HC1 DIAMOND MOUNTAIN</b>		<b>7/18</b>	<b>Dobyns</b>	20	<b>C-12</b>	<b>1900-0700</b>	<b>ICP</b>
<b>ENG6 NORTH LAKE B16</b>		<b>7/22</b>		3	<b>E-161</b>	<b>1900-0700</b>	<b>ICP</b>
<b>WTS2 JOHN SEMPLE 2</b>		<b>7/21</b>	<b>Horn</b>	1	<b>E-88</b>	<b>1900-0700</b>	<b>ICP</b>
<b>WTS2 JOHN SEMPLE 3</b>		<b>7/21</b>	<b>Goldie</b>	2	<b>E-89</b>	<b>1900-0700</b>	<b>ICP</b>
<b>DO22 NORTHSTATE 1</b>		<b>7/21</b>	<b>Poe</b>	2	<b>E-83</b>	<b>1900-0700</b>	<b>ICP</b>
<b>DO22 DARRAH LOGGING 1</b>		<b>7/22</b>	<b>Derra</b>	2	<b>E-221</b>	<b>1900-0700</b>	<b>ICP</b>
<b>DO22 DARRAH LOGGING 2</b>		<b>7/22</b>	<b>Waterman</b>	2	<b>E-222</b>	<b>1900-0700</b>	<b>ICP</b>
<b>SOFR HABECK</b>			<b>Habeck</b>	1	<b>O-212</b>	<b>1900-0700</b>	<b>ICP</b>
<b>SOFR(T) AULD</b>			<b>Auld</b>	1	<b>O-209</b>	<b>1900-0700</b>	<b>ICP</b>
<b>EMTF MATLOCK</b>		<b>7/23</b>	<b>Matlock</b>		<b>O-204</b>	<b>1900-0700</b>	<b>ICP</b>
<b>EMPF HARDING</b>			<b>Harding</b>		<b>O-253</b>	<b>1900-0700</b>	<b>ICP</b>
<b>MOUNTAIN MEDICS AMBO 2</b>		<b>7/21</b>	<b>Jensen</b>	3	<b>E-209</b>	<b>1900-0700</b>	<b>ICP</b>

**6. Work Assignments:**  
 Task: Coordinate with Branch X for construction of direct and indirect lines.  
 Purpose: To develop control lines in locations where hazards to responders can be acceptably mitigated while keeping the fire in the smallest footprint possible.  
 End State: Safely completed control lines providing the highest probability to contain the fire.

**7. Special Instructions:**

8. Communications								
Name	Ch	Function	Rx Freq	Rx Tone	Tx Freq	Tx Tone	Mode	Notes
***Use appropriate Command for Division assigned to***								
***Use appropriate Tactical for Division assigned to***								
A/G TAC	14	A/G TAC	168.3750	0.0	168.3750	0.0	A	Overhead use only
CALCORD	15	TACTICAL	156.0750	(T6) 156.7	156.0750	(T6) 156.7	A	
AIRGUARD	16	A/G	168.6250	0.0	168.6250	(T1) 110.9	A	

**9. Prepared by: Name:** M. Yeun/R. Resnick/T.Hullquist(T)    RESL  
 Signature: \_\_\_\_\_  
**ICS 204**    Date/Time: 7/9/2024 2200    Personnel Count: 37

# ASSIGNMENT LIST (ICS 204 WF)

CONTROLLED UNCLASSIFIED  
INFORMATION/BASIC

<b>1. Incident Name:</b> <p style="text-align: center; font-size: 1.2em;"><b>SHELLY</b></p>	<b>2. Operational Period:</b> Date From: 07/10/24    Date To: 07/11/24 Time From: 0700    Time To: 0700	<b>3. Branch</b> <b>Division</b>  Contingency <b>North</b>
--	---	--

**4. Operations Personnel:** Page 1 of 3

Operations Section Chief: <b>J. Owings/S. Lauderdale/J. Flores(T)</b> Branch Director: <b>L. Wright</b> Division/Group Supervisor: <b>S. Kovacs</b>	Night Ops: <b>R. Szczepanek</b> Branch Safety: Air Attack:
---	--

**5. Resources Assigned:**      **\*\* Resources Below in Bold are 12 Hour \*\***

Resource Identifier	ALS	LWD	Leader	Personnel	Request #	Hours	Reporting Location
<b>HC1 REDMOND IHC</b>		<b>7/19</b>	<b>Varon</b>	20	<b>C-42</b>	<b>0700-1900</b>	<b>ICP</b>
<b>HC2IA JACKSON IHC</b>		<b>7/15</b>	<b>Stone</b>	21	<b>C-23</b>	<b>0700-1900</b>	<b>ICP</b>
<b>HC2IA PACIFIC OASIS 14A</b>		<b>7/21</b>	<b>Langberg</b>	20	<b>C-26</b>	<b>0700-1900</b>	<b>ICP</b>
<b>HC2IA ARDEN SOLUTIONS</b>		<b>7/21</b>	<b>Harrison</b>	20	<b>C-30</b>	<b>0700-1900</b>	<b>ICP</b>
<b>HC2IA DEVILS CANYON</b>		<b>7/22</b>	<b>Merritt</b>	20	<b>C-31</b>	<b>0700-1900</b>	<b>ICP</b>
<b>HC2IA BILLINGS</b>		<b>7/11</b>	<b>Lissick</b>	20	<b>C-32</b>	<b>0700-1900</b>	<b>ICP</b>
<b>CAKNF 3600C</b>		<b>7/21</b>	<b>Leckness</b>		<b>E-227</b>	<b>0700-1900</b>	<b>ICP</b>
<b>ENG3 STEAMBOAT SPRINGS</b>		<b>7/22</b>	<b>White</b>	3	<b>E-117</b>	<b>0700-1900</b>	<b>ICP</b>
<b>ENG3 FIRE SUPPRESSION</b>		<b>7/22</b>	<b>Bradford</b>	3	<b>E-123</b>	<b>0700-1900</b>	<b>ICP</b>
<b>ENG6 RYAN FLORES</b>		<b>7/21</b>	<b>Aldrich</b>	4	<b>E-62</b>	<b>0700-1900</b>	<b>ICP</b>
<b>ENG6 THOMAS CAMPBELL</b>		<b>7/21</b>	<b>Hoover</b>	3	<b>E-63</b>	<b>0700-1900</b>	<b>ICP</b>
<b>ENG6 MADISON FD #661</b>		<b>7/22</b>	<b>Ricks</b>		<b>E-151</b>	<b>0700-1900</b>	<b>ICP</b>
<b>ENG6 LOOMIS FIRE</b>		<b>7/21</b>	<b>Melendez</b>		<b>E-154</b>	<b>0700-1900</b>	<b>ICP</b>
<b>ENG6 MTCES E7175</b>		<b>7/22</b>	<b>Gilbert</b>	3	<b>E-159</b>	<b>0700-1900</b>	<b>ICP</b>
<b>ENG6 BUTTE 1</b>		<b>7/22</b>	<b>Secconb</b>		<b>E-160</b>	<b>0700-1900</b>	<b>ICP</b>
<b>ENG6 PROMETHUS</b>		<b>7/22</b>	<b>Stenger</b>	3	<b>E-166</b>	<b>0700-1900</b>	<b>ICP</b>
<b>DOZ2 LET-ER-BUCK TRUCKING</b>		<b>7/21</b>	<b>Lassen</b>	1	<b>E-76</b>	<b>0700-1900</b>	<b>ICP</b>
<b>DOZ2 DAVIS CONSTRUCTION</b>		<b>7/21</b>	<b>Deister</b>	2	<b>E-79</b>	<b>0700-1900</b>	<b>ICP</b>

**6. Work Assignments:**  
 Task: Scout contingency line opportunities on Red Mountain and Scott River road. Continue to improve histoirc dozer lines to the north. Continue to evaluate structures for structure defense.  
 Purpose: Establish primary and secondary control lines to protect values at risk including timber, cultural, and communities to include Kidder Creek, Scotts Valley and Hamburg.  
 End State: Established contigency control lines are in place in the event that fire crosses primary lines.

**7. Special Instructions:**  
 Only use water from metered hydrant in Fort Jones unless conducting direct suppression around residential areas.  
 Do not use old wooden bridge on Kidder Creek Rd.  
 Use road guards when working along the road.

**8. Communications**

Name	Ch	Function	Rx Freq	Rx Tone	Tx Freq	Tx Tone	Mode	Notes
NIFC C3	1	COMMAND	170.4250	(T3) 131.8	168.0750	(T3) 131.8	A	English Peak
NIFC T5	9	TACTICAL	166.7750	(T3) 131.8	166.7750	(T3) 131.8	A	
A/G TAC	14	A/G TAC	168.3750	0.0	168.3750	0.0	A	Overhead use only
CALCORD	15	TACTICAL	156.0750	(T6) 156.7	156.0750	(T6) 156.7	A	
AIRGUARD	16	A/G	168.6250	0.0	168.6250	(T1) 110.9	A	

**9. Prepared by: Name:** M. Yeun/R. Resnick/T.Hullquist(T)    RESL    Signature: \_\_\_\_\_

**ICS 204**      Date/Time: 7/9/2024    2200      Personnel Count: 143

# ASSIGNMENT LIST (ICS 204 WF)

CONTROLLED UNCLASSIFIED  
INFORMATION/BASIC

<b>1. Incident Name:</b>	<b>2. Operational Period:</b>	<b>3. Branch</b>	<b>Division</b>
<b>SHELLY</b>	Date From: 07/10/24    Date To: 07/11/24 Time From: 0700    Time To: 0700	<b>Contingency</b>	<b>North</b>

<b>4. Operations Personnel:</b>		<b>Page 2 of 3</b>
Operations Section Chief: <b>J. Owings/S. Lauderdale/J. Flores(T)</b> Branch Director: <b>L. Wright</b> Division/Group Supervisor: <b>S. Kovacs</b>	Night Ops: <b>R. Szczepanek</b> Branch Safety: Air Attack:	

5. Resources Assigned:	** Resources Below in Bold are 12 Hour **						
Resource Identifier	ALS	LWD	Leader	Personnel	Request #	Hours	Reporting Location
<b>WTS2 WHITE</b>		<b>7/21</b>	<b>White</b>	<b>1</b>	<b>E-48</b>	<b>0700-1900</b>	<b>ICP</b>
<b>WTS2 MATT JOHNSON</b>		<b>7/20</b>	<b>Nichols</b>	<b>1</b>	<b>E-49</b>	<b>0700-1900</b>	<b>ICP</b>
<b>WTS2 OVERWATCH</b>		<b>7/21</b>		<b>2</b>	<b>E-50</b>	<b>0700-1900</b>	<b>ICP</b>
<b>WTS2 CATTLE LACK 1</b>		<b>7/22</b>	<b>Enlow</b>	<b>1</b>	<b>E-90</b>	<b>0700-1900</b>	<b>ICP</b>
<b>WTS2 CATTLE LACK 2</b>		<b>7/22</b>	<b>Shapp</b>	<b>1</b>	<b>E-91</b>	<b>0700-1900</b>	<b>ICP</b>
<b>DO22 ABLE SERVICES</b>			<b>Gordon</b>		<b>E-77</b>	<b>0700-1900</b>	<b>ICP</b>
<b>MAST HILL</b>			<b>Hill</b>		<b>E-58</b>	<b>0700-1900</b>	<b>ICP</b>
<b>MAST SMOKY MOUNTAIN</b>		<b>7/21</b>	<b>Tomlins</b>	<b>2</b>	<b>E-59</b>	<b>0700-1900</b>	<b>ICP</b>
<b>CHP2 NORTH ZONE 1</b>		<b>7/21</b>	<b>Demery</b>	<b>3</b>	<b>E-56</b>	<b>0700-1900</b>	<b>ICP</b>
<b>CHP2 NORTH ZONE 2</b>		<b>7/21</b>	<b>Ingram</b>	<b>3</b>	<b>E-57</b>	<b>0700-1900</b>	<b>ICP</b>
<b>FMOD TOMS TIMBER</b>		<b>7/20</b>	<b>Josh</b>	<b>2</b>	<b>O-154</b>	<b>0700-1900</b>	<b>ICP</b>
<b>FMOD LONG GROUND</b>		<b>7/21</b>	<b>Bokish</b>	<b>2</b>	<b>O-160</b>	<b>0700-1900</b>	<b>ICP</b>
<b>FMOD GOD &amp; COUNTRY 1</b>		<b>7/21</b>	<b>Barny</b>	<b>2</b>	<b>O-162</b>	<b>0700-1900</b>	<b>ICP</b>
<b>FMOD GOD &amp; COUNTRY 2</b>		<b>7/20</b>	<b>Robbins</b>	<b>2</b>	<b>O-163</b>	<b>0700-1900</b>	<b>ICP</b>
<b>FMOD NORTH ZONE FALLERS</b>		<b>7/22</b>	<b>Bennett</b>	<b>2</b>	<b>O-188</b>	<b>0700-1900</b>	<b>ICP</b>
<b>TFLD PERRAULT</b>		<b>7/21</b>	<b>Perrault</b>	<b>1</b>	<b>O-165</b>	<b>0700-1900</b>	<b>ICP</b>
<b>TFLD(T) DAWSON</b>		<b>7/21</b>	<b>Dawson</b>	<b>1</b>	<b>O-164</b>	<b>0700-1900</b>	<b>ICP</b>
<b>TFLD DELSANTOS</b>		<b>7/22</b>	<b>Delsantos</b>	<b>1</b>	<b>O-232</b>	<b>0700-1900</b>	<b>ICP</b>

**6. Work Assignments:**  
 Task: Scout contingency line opportunities on Red Mountain and Scott River road. Continue to improve histoirc dozer lines to the north. Continue to evaluate structures for structure defense.  
 Purpose: Establish primary and secondary control lines to protect values at risk including timber, cultural, and communities to include Kidder Creek, Scotts Valley and Hamburg.  
 End State: Established contingency control lines are in place in the event that fire crosses primary lines.

**7. Special Instructions:**  
 Only use water from metered hydrant in Fort Jones unless conducting direct suppression around residential areas.  
 Do not use old wooden bridge on Kidder Creek Rd.  
 Use road guards when working along the road.

8. Communications								
Name	Ch	Function	Rx Freq	Rx Tone	Tx Freq	Tx Tone	Mode	Notes
NIFC C3	1	COMMAND	170.4250	(T3) 131.8	168.0750	(T3) 131.8	A	English Peak
NIFC T5	9	TACTICAL	166.7750	(T3) 131.8	166.7750	(T3) 131.8	A	
A/G TAC	14	A/G TAC	168.3750	0.0	168.3750	0.0	A	Overhead use only
CALCORD	15	TACTICAL	156.0750	(T6) 156.7	156.0750	(T6) 156.7	A	
AIRGUARD	16	A/G	168.6250	0.0	168.6250	(T1) 110.9	A	

**9. Prepared by: Name:** M. Yeun/R. Resnick/T.Hullquist(T)    RESL    Signature: \_\_\_\_\_  
**ICS 204**    Date/Time: 7/9/2024 2200    Personnel Count: 27



# ASSIGNMENT LIST (ICS 204 WF)

CONTROLLED UNCLASSIFIED  
INFORMATION//BASIC

<b>1. Incident Name:</b>	<b>2. Operational Period:</b>	<b>3. Branch</b>	<b>Division</b>
<b>SHELLY</b>	Date From: 07/10/24    Date To: 07/11/24 Time From: 0700    Time To: 0700	<b>Contingency</b>	<b>North</b>
<b>4. Operations Personnel:</b>		<b>Page 3 of 3</b>	

Operations Section Chief: <b>J. Owings/S. Lauderdale/J. Flores(T)</b> Branch Director: <b>L. Wright</b> Division/Group Supervisor: <b>S. Kovacs</b>	Night Ops: <b>R. Szczepanek</b> Branch Safety: Air Attack:
---	--

5. Resources Assigned:	** Resources Below in Bold are 12 Hour **					Hours	Reporting Location
Resource Identifier	ALS	LWD	Leader	Personnel	Request #		
<b>HEQB RABLIN</b>		<b>7/21</b>	<b>Rablin</b>	<b>1</b>	<b>O-176</b>	<b>0700-1900</b>	<b>ICP</b>
<b>HEQB STEVENS</b>		<b>7/21</b>	<b>Stevens</b>	<b>1</b>	<b>O-226</b>	<b>0700-1900</b>	<b>ICP</b>
<b>HEQB CORDELL</b>		<b>7/22</b>	<b>Cordell</b>	<b>1</b>	<b>O-227</b>	<b>0700-1900</b>	<b>ICP</b>
<b>FOBS BRICKEY</b>		<b>7/14</b>	<b>Brickey</b>	<b>1</b>	<b>O-130</b>	<b>0700-1900</b>	<b>ICP</b>
<b>FOBS MILLER</b>		<b>7/15</b>	<b>Miller</b>	<b>1</b>	<b>O-131</b>	<b>0700-1900</b>	<b>ICP</b>
<b>SOFC GRANT</b>		<b>7/16</b>	<b>Grant</b>	<b>1</b>	<b>O-5</b>	<b>0700-1900</b>	<b>ICP</b>
<b>SOF2 NORTH</b>		<b>7/22</b>	<b>North</b>	<b>1</b>	<b>O-213</b>	<b>0700-1900</b>	<b>ICP</b>
<b>SOFR(T) GRAY</b>		<b>7/17</b>	<b>Gray</b>	<b>1</b>	<b>O-7.6</b>	<b>0700-1900</b>	<b>ICP</b>
<b>EMPF CORRAL</b>		<b>7/22</b>	<b>Corral</b>	<b>1</b>	<b>O-197</b>	<b>0700-1900</b>	<b>ICP</b>
<b>EMPF DE JONG</b>		<b>7/22</b>	<b>DeJong</b>		<b>O-198</b>	<b>0700-1900</b>	<b>ICP</b>
<b>EMTF CARROL</b>			<b>Carrol</b>	<b>1</b>	<b>O-52</b>	<b>0700-1900</b>	<b>ICP</b>
<b>AMB2 MOUNTAIN MEDICS</b>		<b>7/22</b>	<b>Johansen</b>	<b>3</b>	<b>E-228</b>	<b>0700-1900</b>	<b>ICP</b>

**6. Work Assignments:**  
 Task: Scout contingency line opportunities on Red Mountain and Scott River road. Continue to improve historic dozer lines to the north. Continue to evaluate structures for structure defense.  
 Purpose: Establish primary and secondary control lines to protect values at risk including timber, cultural, and communities to include Kidder Creek, Scotts Valley and Hamburg.  
 End State: Established contingency control lines are in place in the event that fire crosses primary lines.

**7. Special Instructions:**  
 Only use water from metered hydrant in Fort Jones unless conducting direct suppression around residential areas.  
 Do not use old wooden bridge on Kidder Creek Rd.  
 Use road guards when working along the road.

**8. Communications**

Name	Ch	Function	Rx Freq	Rx Tone	Tx Freq	Tx Tone	Mode	Notes
NIFC C3	1	COMMAND	170.4250	(T3) 131.8	168.0750	(T3) 131.8	A	English Peak
NIFC T5	9	TACTICAL	166.7750	(T3) 131.8	166.7750	(T3) 131.8	A	
A/G TAC	14	A/G TAC	168.3750	0.0	168.3750	0.0	A	Overhead use only
CALCORD	15	TACTICAL	156.0750	(T6) 156.7	156.0750	(T6) 156.7	A	
AIRGUARD	16	A/G	168.6250	0.0	168.6250	(T1) 110.9	A	

**9. Prepared by: Name:** M. Yeun/R. Resnick/T.Hullquist(T)    RESL    Signature: \_\_\_\_\_

**ICS 204**    Date/Time: 7/9/2024    2200    Personnel Count: 13

# ASSIGNMENT LIST (ICS 204 WF)

CONTROLLED UNCLASSIFIED  
INFORMATION/BASIC

<b>1. Incident Name:</b>	<b>2. Operational Period:</b>	<b>3. Branch</b>	<b>Division</b>
<b>SHELLY</b>	Date From: 07/10/24    Date To: 07/11/24 Time From: 0700    Time To: 0700	<b>Contingency</b>	<b>South</b>

<b>4. Operations Personnel:</b>		<b>Page 1 of 2</b>
Operations Section Chief: <b>J. Owings/S. Lauderdale/J. Flores(T)</b>	Night Ops: <b>R. Szczepanek</b>	
Branch Director: <b>L. Wright</b>	Branch Safety:	
Division/Group Supervisor: <b>R. DeCamp</b>	Air Attack:	

5. Resources Assigned:	** Resources Below in Bold are 12 Hour **							
Resource Identifier	ALS	LWD	Leader	Personnel	Request #	Hours	Reporting Location	
HC1 SALMON RIVER		7/11	<b>Keoki</b>	24	<b>C-18</b>	0700-1900	ICP	
HC1 TRINITY IHC		7/21	<b>Dias</b>	22	<b>C-25</b>	0700-1900	ICP	
HC1 KLAMATH IHC		7/21	<b>Owensbey</b>	23	<b>C-28</b>	0700-1900	ICP	
HC2IA BLACK MESA	X	7/17	<b>Ellis</b>	23	<b>C-16</b>	0700-1900	ICP	
HC2IA UKONOMI			<b>Peters</b>	21	<b>C-24</b>	0700-1900	ICP	
HC2IA GRAYBACK FORESTRY		7/21	<b>Rhinehart</b>	20	<b>C-29</b>	0700-1900	ICP	
HC2IA NORTH IDAHO		7/22	<b>Kearn</b>	20	<b>C-48</b>	0700-1900	ICP	
ENG3 OUTBACK 1		7/22	<b>Terry</b>		<b>E-130</b>	0700-1900	ICP	
ENG3 OUTBACK 2		7/22	<b>Beal</b>		<b>E-131</b>	0700-1900	ICP	
ENG6 ROARING FORK					<b>E-148</b>	0700-1900	ICP	
ENG6 MES 6217		7/13	<b>Bennett</b>	4	<b>E-150</b>	0700-1900	ICP	
ENG6 NATIONAL FIRE					<b>E-153</b>	0700-1900	ICP	
ENG6 WOODPECKER		7/22	<b>Imel</b>	3	<b>E-164</b>	0700-1900	ICP	
DOZ2 KNF 1		7/16	<b>Grotting</b>	4	<b>E-1</b>	0700-1900	ICP	
DOZ2 JOHNSON		7/21	<b>Maxwell</b>	2	<b>E-78</b>	0700-1900	ICP	
DOZ2 JUNGWIRTH							ICP	
DOZ2 EVANS BROTHERS		7/21	<b>Evans</b>	2	<b>E-87</b>	0700-1900	ICP	
WTS2 JOHN SEMPLE 1		7/21	<b>Johnston</b>	1	<b>E-51</b>	0700-1900	ICP	
FMOD AXE CONTRACTING		7/21	<b>Goodwin</b>	2	<b>O-185</b>	0700-1900	ICP	

**6. Work Assignments:**  
 Task: Scout contingency line opportunities on Patterson Ridge to Etna Summit. Continue to improve historic dozer lines to the south. Continue to evaluate structures for structure defense.  
 Purpose: Establish primary and secondary control lines to protect values at risk including timber, cultural, and communities to include Greenview, community of Etna and French Creek.  
 End State: Established contingency control lines are in place in the event that fire crosses primary lines.

**7. Special Instructions:**  
 Only use water from metered hydrant in Fort Jones unless conducting direct suppression around residential areas.  
 Use road guards when working along the road.

**8. Communications**

Name	Ch	Function	Rx Freq	Rx Tone	Tx Freq	Tx Tone	Mode	Notes
NIFC C3	1	COMMAND	170.4250	(T3) 131.8	168.0750	(T3) 131.8	A	English Peak
NIFC T6	10	TACTICAL	168.2500	(T3) 131.8	168.2500	(T3) 131.8	A	
A/G TAC	14	A/G TAC	168.3750	0.0	168.3750	0.0	A	Overhead use only
CALCORD	15	TACTICAL	156.0750	(T6) 156.7	156.0750	(T6) 156.7	A	
AIRGUARD	16	A/G	168.6250	0.0	168.6250	(T1) 110.9	A	

**9. Prepared by: Name:** M. Yeun/R. Resnick/T.Hullquist(T)    RESL  
 Signature: \_\_\_\_\_  
 Date/Time: 7/9/2024    2200    Personnel Count: 169

# ASSIGNMENT LIST (ICS 204 WF)

CONTROLLED UNCLASSIFIED  
INFORMATION//BASIC

<b>1. Incident Name:</b>	<b>2. Operational Period:</b>	<b>3. Branch</b>
<b>SHELLY</b>	Date From: 07/10/24     Date To: 07/11/24 Time From: 0700     Time To: 0700	<b>Division</b>  <b>South</b>
		<b>Contingency</b>
		<b>Page 2 of 2</b>

<b>4. Operations Personnel:</b>	
Operations Section Chief: <b>J. Owings/S. Lauderdale/J. Flores(T)</b> Branch Director: <b>L. Wright</b> Division/Group Supervisor: <b>R. DeCamp</b>	Night Ops: <b>R. Szczepanek</b> Branch Safety: Air Attack:

<b>5. Resources Assigned:</b>							
<b>** Resources Below in Bold are 12 Hour **</b>							
Resource Identifier	ALS	LWD	Leader	Personnel	Request #	Hours	Reporting Location
<b>TFLD SCHUSTER</b>		<b>7/21</b>	<b>Schuster</b>	<b>1</b>	<b>O-48</b>	<b>0700-1900</b>	<b>ICP</b>
<b>TFLD COOK</b>		<b>7/22</b>	<b>Cook</b>	<b>1</b>	<b>O-51</b>	<b>0700-1900</b>	<b>ICP</b>
<b>HEQB CRUM</b>			<b>Crum</b>	<b>1</b>	<b>O-175</b>	<b>0700-1900</b>	<b>ICP</b>
<b>SOFR SMITH</b>			<b>Smith</b>	<b>1</b>	<b>O-215</b>	<b>0700-1900</b>	<b>ICP</b>
<b>EMPF HORVATH</b>		<b>7/22</b>	<b>Horvath</b>	<b>1</b>	<b>O-93</b>	<b>0700-1900</b>	<b>ICP</b>
<b>EMTF SOTO</b>		<b>7/21</b>	<b>Soto</b>	<b>1</b>	<b>O-53</b>	<b>0700-1900</b>	<b>ICP</b>
<b>AMB2 MOUNTAIN MEDICS 2</b>		<b>7/22</b>	<b>Hollis</b>	<b>3</b>	<b>E-210</b>	<b>0700-1900</b>	<b>ICP</b>
<b>FMOD AXE CONTRACTING</b>		<b>7/21</b>	<b>Goodwin</b>	<b>2</b>	<b>O-185</b>	<b>0700-1900</b>	

**6. Work Assignments:**  
 Task: Scout contingency line opportunities on Patterson Ridge to Etna Summit. Continue to improve histoirc dozer lines to the south. Continue to evaluate structures for structure defense.  
 Purpose: Establish primary and secondary control lines to protect values at risk including timber, cultural, and communities to include Greenview, community of Etna and French Creek.  
 End State: Established contingency control lines are in place in the event that fire crosses primary lines.

**7. Special Instructions:**  
 Only use water from metered hydrant in Fort Jones unless conducting direct suppression around residential areas.  
 Use road guards when working along the road.

<b>8. Communications</b>								
Name	Ch	Function	Rx Freq	Rx Tone	Tx Freq	Tx Tone	Mode	Notes
NIFC C3	1	COMMAND	170.4250	(T3) 131.8	168.0750	(T3) 131.8	A	English Peak
NIFC T6	10	TACTICAL	168.2500	(T3) 131.8	168.2500	(T3) 131.8	A	
A/G TAC	14	A/G TAC	168.3750	0.0	168.3750	0.0	A	Overhead use only
CALCORD	15	TACTICAL	156.0750	(T6) 156.7	156.0750	(T6) 156.7	A	
AIRGUARD	16	A/G	168.6250	0.0	168.6250	(T1) 110.9	A	

**9. Prepared by: Name:** M. Yeun/R. Resnick/T.Hullquist(T)     RESL  
 Signature: \_\_\_\_\_  
**ICS 204**     Date/Time: 7/9/2024 2200     Personnel Count: 9

# ASSIGNMENT LIST (ICS 204 WF)

CONTROLLED UNCLASSIFIED  
INFORMATION//BASIC

<b>1. Incident Name:</b>	<b>2. Operational Period:</b>	<b>3. Branch</b>	<b>Division</b>
<b>SHELLY</b>	Date From: 07/10/24      Date To: 07/11/24 Time From: 0700              Time To: 0700	<b>Contingency</b>	<b>East</b>
<b>4. Operations Personnel:</b>		Page 1 of 1	

Operations Section Chief: <b>J. Owings/S. Lauderdale/J. Flores(T)</b> Branch Director: <b>L. Wright</b> Division/Group Supervisor: <b>M. Milojevich (12)</b>	Night Ops: <b>R. Szczepanek</b> Branch Safety: Air Attack:
--	--

5. Resources Assigned:	** Resources Below in Bold are 12 Hour **						
Resource Identifier	ALS	LWD	Leader	Personnel	Request #	Hours	Reporting Location
STF OES 4804F			MARONE, JOSH	16	E-20040	0700-0700	S. Kidder Cr Rd X HWY3
STG TBD						0700-0700	S. Kidder Cr Rd X HWY3
DOZ PVT E-20111 - TOM			MARCUZ, JACK		E-20111	0700-0700	S. Kidder Cr Rd X HWY3
DOZ PVT E-20074 ERICK			Erickson		E-20074	0700-0700	S. Kidder Cr Rd X HWY3
DOZ TBD						0700-0700	S. Kidder Cr Rd X HWY3
DOZ TBD						0700-0700	S. Kidder Cr Rd X HWY3
FEL PVT E-20118 - JW			MORRISON, MATT		E-20118	0700-1900	S. Kidder Cr Rd X HWY3
FEL PVT E-20119 - JW			MORRISON, MATT		E-20119	0700-1900	S. Kidder Cr Rd X HWY3
FEL PVT E-20120 - RAY			RAYGOZA, AUSIN	1	E-20120	0700-1900	S. Kidder Cr Rd X HWY3
GRAD TBD						0700-0700	S. Kidder Cr Rd X HWY3
GRAD TBD						0700-0700	S. Kidder Cr Rd X HWY3
SKD PVT E-20112 - LASS			LASSEN, STEVE		E-20112	0700-0700	S. Kidder Cr Rd X HWY3
SKD PVT E-20114 - BUSH			BUSHY, ANDREW	1	E-20114	0700-0700	S. Kidder Cr Rd X HWY3
SKD PVT E-20116 - RIDGE LOG			DIAZ, DAVY		E-20116	0700-0700	S. Kidder Cr Rd X HWY3
SKD PVT E-20117 - RIDGE LOG			SLACK, JAMES		E-20117	0700-0700	S. Kidder Cr Rd X HWY3

**6. Work Assignments:**  
Identify and construct contingency line.

**7. Special Instructions:**

**8. Communications**

Name	Ch	Function	Rx Freq	Rx Tone	Tx Freq	Tx Tone	Mode	Notes
NIFC C3	1	COMMAND	170.4250	(T3) 131.8	168.0750	(T3) 131.8	A	English Peak
VTAC 12	11	TACTICAL	154.4525	(T6) 156.7	154.4525	(T6) 156.7	A	
A/G TAC	14	A/G TAC	168.3750	0.0	168.3750	0.0	A	Overhead use only
CALCORD	15	TACTICAL	156.0750	(T6) 156.7	156.0750	(T6) 156.7	A	
AIRGUARD	16	A/G	168.6250	0.0	168.6250	(T1) 110.9	A	

**9. Prepared by: Name:** M. Yeun/R. Resnick/T.Hullquist(T)      RESL  
 Signature: \_\_\_\_\_  
**ICS 204**      Date/Time: 7/9/2024      2200      Personnel Count: 18



# ASSIGNMENT LIST (ICS 204 WF)

CONTROLLED UNCLASSIFIED  
INFORMATION/BASIC

<b>1. Incident Name:</b>	<b>2. Operational Period:</b>	<b>3. Branch</b>	<b>Division</b>
<b>SHELLY</b>	Date From: 07/10/24      Date To: 07/11/24 Time From: 0700              Time To: 0700	<b>Structure</b>	<b>Etna</b>
<b>4. Operations Personnel:</b>		Page 1 of 1	

Operations Section Chief: <b>J. Owings/S. Lauderdale/J. Flores(T)</b>	Night Ops: <b>R. Szczepanek</b>
Branch Director: <b>C. Costa (12), J. Howard (T) (12)</b>	Branch Safety:
Division/Group Supervisor: <b>R. West (12)</b>	Air Attack:

5. Resources Assigned:	** Resources Below in Bold are 12 Hour **					Hours	Reporting Location
Resource Identifier	ALS	LWD	Leader	Personnel	Request #		
STA TBD						0700-0700	HWY 3 X Howell Ave
STA TBD						0700-0700	HWY 3 X Howell Ave
STA TBD						0700-0700	HWY 3 X Howell Ave
W/T TBD						0700-0700	HWY 3 X Howell Ave
W/T TBD						0700-0700	HWY 3 X Howell Ave
W/T TBD						0700-0700	HWY 3 X Howell Ave

**6. Work Assignments:**  
Develop and prepare to implement structure defense plan.

**7. Special Instructions:**

**8. Communications**

Name	Ch	Function	Rx Freq	Rx Tone	Tx Freq	Tx Tone	Mode	Notes
NIFC C3	1	COMMAND	170.4250	(T3) 131.8	168.0750	(T3) 131.8	A	English Peak
CDF T36	P3.9	TACTICAL	159.3225	(T17) 67.0	159.3225	(T17) 67.0	A	
A/G TAC	14	A/G TAC	168.3750	0.0	168.3750	0.0	A	Overhead use only
CALCORD	15	TACTICAL	156.0750	(T6) 156.7	156.0750	(T6) 156.7	A	
AIRGUARD	16	A/G	168.6250	0.0	168.6250	(T1) 110.9	A	

**9. Prepared by: Name:** M. Yeun/R. Resnick/T.Hullquist(T)      RESL      Signature: \_\_\_\_\_

**ICS 204**      Date/Time: 7/9/2024      2200      Personnel Count: 0

# ASSIGNMENT LIST (ICS 204 WF)

CONTROLLED UNCLASSIFIED  
INFORMATION//BASIC

<b>1. Incident Name:</b>	<b>2. Operational Period:</b>	<b>3. Branch</b>	<b>Division</b>
<b>SHELLY</b>	Date From: 07/10/24      Date To: 07/11/24 Time From: 0700              Time To: 0700	<b>Structure</b>	<b>Quartz Valley</b>
<b>4. Operations Personnel:</b>			

Operations Section Chief: <b>J. Owings/S. Lauderdale/J. Flores(T)</b> Branch Director: <b>C. Costa (12), J. Howard (T) (12)</b> Division/Group Supervisor: <b>C. Periera (12)</b>	Night Ops: <b>R. Szczepanek</b> Branch Safety: Air Attack:
---	--

5. Resources Assigned:	** Resources Below in Bold are 12 Hour **							
Resource Identifier	ALS	LWD	Leader	Personnel	Request #	Hours	Reporting Location	
STA TBD						0700-0700	Mill Cr Rd X Emigrant Cr Rd	
STC XTB 4226C			<b>MANNING, JAY</b>	<b>18 +/-</b>	<b>E-20054</b>	0700-0700	Mill Cr Rd X Emigrant Cr Rd	
STG TBD						0700-0700	Mill Cr Rd X Emigrant Cr Rd	
STG TBD						0700-0700	Mill Cr Rd X Emigrant Cr Rd	
W/T PVT E-20047 - DOUBLE			<b>Hanna</b>		<b>E-20047</b>	0700-0700	Mill Cr Rd X Emigrant Cr Rd	

**6. Work Assignments:**  
Develop and prepare to implement structure defense plan.

**7. Special Instructions:**

**8. Communications**

Name	Ch	Function	Rx Freq	Rx Tone	Tx Freq	Tx Tone	Mode	Notes
NIFC C3	1	COMMAND	170.4250	(T3) 131.8	168.0750	(T3) 131.8	A	English Peak
CDF T37	P3.10	TACTICAL	151.1525	(T17) 67.0	151.1525	(T17) 67.0	A	
A/G TAC	14	A/G TAC	168.3750	0.0	168.3750	0.0	A	Overhead use only
CALCORD	15	TACTICAL	156.0750	(T6) 156.7	156.0750	(T6) 156.7	A	
AIRGUARD	16	A/G	168.6250	0.0	168.6250	(T1) 110.9	A	

**9. Prepared by: Name:** M. Yeun/R. Resnick/T.Hullquist(T)      RESL      Signature: \_\_\_\_\_

**ICS 204**      Date/Time: 7/9/2024 2200      Personnel Count: 18

# ASSIGNMENT LIST (ICS 204 WF)

CONTROLLED UNCLASSIFIED  
INFORMATION//BASIC

<b>1. Incident Name:</b>	<b>2. Operational Period:</b>	<b>3. Branch</b>	<b>Division</b>
<b>SHELLY</b>	Date From: 07/10/24      Date To: 07/11/24 Time From: 0700              Time To: 0700	<b>Structure</b>	<b>Greenview</b>
<b>4. Operations Personnel:</b>		<b>Page 1 of 1</b>	

Operations Section Chief: <b>J. Owings/S. Lauderdale/J. Flores(T)</b> Branch Director: <b>C. Costa (12), J. Howard (T) (12)</b> Division/Group Supervisor: <b>C. Reginatto (12)</b>	Night Ops: <b>R. Szczepanek</b> Branch Safety: Air Attack:
---	--

<b>5. Resources Assigned:</b>		<b>** Resources Below in Bold are 12 Hour **</b>					Hours	Reporting Location
Resource Identifier	ALS	LWD	Leader	Personnel	Request #			
STA TBD						0700-0700	S. Kidder Cr Rd X HWY 3	
STA TBD						0700-0700	S. Kidder Cr Rd X HWY 3	
STC XED 4075C			HALL, DUSTIN	20	E-20053	0700-0700	S. Kidder Cr Rd X HWY 3	
STC TBD						0700-0700	S. Kidder Cr Rd X HWY 3	
STC TBD						0700-0700	S. Kidder Cr Rd X HWY 3	
STG TBD						0700-0700	S. Kidder Cr Rd X HWY 3	
STG TBD						0700-0700	S. Kidder Cr Rd X HWY 3	
DOZ TBD						0700-0700	S. Kidder Cr Rd X HWY 3	
DOZ TBD						0700-0700	S. Kidder Cr Rd X HWY 3	
W/T PVT E-20048 - DOUBLE			GRASSMAN, LEAH		E-20048	0700-0700	S. Kidder Cr Rd X HWY 3	
W/T TBD						0700-0700	S. Kidder Cr Rd X HWY 3	
W/T TBD						0700-0700	S. Kidder Cr Rd X HWY 3	
HEQB TBD						0700-0700	S. Kidder Cr Rd X HWY 3	
HEQB TBD						0700-0700	S. Kidder Cr Rd X HWY 3	
FALM TBD						0700-0700	S. Kidder Cr Rd X HWY 3	
FALM TBD						0700-0700	S. Kidder Cr Rd X HWY 3	

**6. Work Assignments:**  
Develop and prepare to implement structure defense plan.

**7. Special Instructions:**

**8. Communications**

Name	Ch	Function	Rx Freq	Rx Tone	Tx Freq	Tx Tone	Mode	Notes
NIFC C3	1	COMMAND	170.4250	(T3) 131.8	168.0750	(T3) 131.8	A	English Peak
VFIRE 25	P3.11	TACTICAL	154.2875	(T6) 156.7	154.2875	(T6) 156.7	A	
A/G TAC	14	A/G TAC	168.3750	0.0	168.3750	0.0	A	Overhead use only
CALCORD	15	TACTICAL	156.0750	(T6) 156.7	156.0750	(T6) 156.7	A	
AIRGUARD	16	A/G	168.6250	0.0	168.6250	(T1) 110.9	A	

**9. Prepared by: Name:** M. Yeun/R. Resnick/T.Hullquist(T)      RESL

Signature: \_\_\_\_\_

**ICS 204**      Date/Time: 7/9/2024      2200      Personnel Count: 20

# ICS 205 - INCIDENT RADIO COMMUNICATIONS PLAN

CONTROLLED UNCLASSIFIED  
INFORMATION//BASIC

<b>1. Incident Name:</b> Shelly Branch XX / Contingency Incident Channels	<b>2. Date/Time Prepared</b> Date: 07/09/2024 Time: 1930	<b>3. Operational Period:</b> Date From: 07/10/24      Date To: 07/11/24 Time From: 0700              Time To: 0700
---	--	---

4. Communications									
Ch#	Function	Name	Assigned To	Rx Freq	Rx Tone	Tx Freq	Tx Tone	Mode	Notes
1	COMMAND	NIFC C3	ALL DIVS	170.4250	(T3) 131.8	168.0750	(T3) 131.8	A	English Peak
2	COMMAND	NIFC C10	ALL DIVS	170.4125	(T3) 131.8	165.9625	(T3) 131.8	A	Quartz Lookout
3	COMMAND	NIFC C11	TBD	170.6875	(T3) 131.8	166.5750	(T3) 131.8	A	Unassigned
4	COMMAND	NIFC C12	ALL DIVS	173.0375	(T3) 131.8	167.3250	(T3) 131.8	A	Helispot 5
5	TACTICAL	NIFC T1	DIV E	168.0500	(T3) 131.8	168.0500	(T3) 131.8	A	
6	TACTICAL	NIFC T2	DIV F	168.2000	(T3) 131.8	168.2000	(T3) 131.8	A	
7	TACTICAL	NIFC T3	DIV G	168.6000	(T3) 131.8	168.6000	(T3) 131.8	A	
8	TACTICAL	NIFC T4	DIV T	166.7250	(T3) 131.8	166.7250	(T3) 131.8	A	
9	TACTICAL	NIFC T5	NORTH CONTINGENCY	166.7750	(T3) 131.8	166.7750	(T3) 131.8	A	
10	TACTICAL	NIFC T6	SOUTH CONTINGENCY	168.2500	(T3) 131.8	168.2500	(T3) 131.8	A	
11	TACTICAL	VTAC 12	EAST CONTINGENCY	154.4525	(T6) 156.7	154.4525	(T6) 156.7	A	
12	TACTICAL	VTAC 13	UNASSIGNED	158.7375	(T6) 156.7	158.7375	(T6) 156.7	A	Unassigned
13	A/G CMD	A/G CMD	ALL DIVS	166.6000	0.0	166.6000	0.0	A	
14	A/G TAC	A/G TAC	ALL DIVS	168.3750	0.0	168.3750	0.0	A	Overhead use only
15	TACTICAL	CALCORD	ALL DIVS	156.0750	(T6) 156.7	156.0750	(T6) 156.7	A	Medical Evac Tone 6
16	A/G	AIRGUARD	ALL DIVS	168.6250	0.0	168.6250	(T1) 110.9	A	Emergency Use Only
17									
18									
19									
20	A/G	AIRGUARD	ALL DIVS	168.6250	0.0	168.6250	(T1) 110.9	A	

**5. Special Instructions**

**6. Prepared by (Communications Unit Leader): Name: C.Perry**      Signature: 



# ICS 205 - INCIDENT RADIO COMMUNICATIONS PLAN

CONTROLLED UNCLASSIFIED INFORMATION//BASIC

<b>1. Incident Name:</b> <p style="text-align: center;">Shelly IA Page 2</p>	<b>2. Date/Time Prepared</b> Date: 07/09/2024 Time: 1930	<b>3. Operational Period:</b> Date From: 07/10/24      Date To: 07/11/24 Time From: 0700              Time To: 0700
---	--	---

4. Communications									
Ch#	Function	Name	Assigned To	Rx Freq	Rx Tone	Tx Freq	Tx Tone	Mode	Notes
1	DISPATCH	FS KNF	Dispatch	171.5250	0.0	165.4125	OST	A	Dispatch
2		KNF Salmon	IA COMMAND				OST		
3	COMMAND	KNF River	IA COMMAND	172.2500		165.0750	OST	A	
4	TACTICAL	R5 T4	IA TACTICAL	166.5500	0.0	166.5500	0.0	A	
5	A/G	AG-43	IA AG	167.6000	0.0	167.6000	0.0	A	
6	DISPATCH	SKU L	IA COMMAND	151.3250	(T6) 156.7	159.3600	OST	A	
7	TACTICAL	CDF T9	IA TACTICAL	151.3850	(T16) 192.8	151.3850	(T16) 192.8	A	
8	TACTICAL	CDF T10	IA TACTICAL	151.4000	(T16) 192.8	151.4000	(T16) 192.8	A	
9	A/G	CDF A/G1	IA AG	151.2200	(T16) 192.8	151.2200	(T16) 192.8	A	
10									
11									
12									
13									
14	A/G TAC	A/G TAC	ALL DIVS	168.3750	0.0	168.3750	0.0	A	
15	TACTICAL	CALCORD	ALL DIVS	156.0750	(T6) 156.7	156.0750	(T6) 156.7	A	
16	A/G	AIRGUARD	EMERGENCY	168.6250	0.0	168.6250	(T1) 110.9	A	
17									
18									
19	TACTICAL	CALCORD	MEDICAL	156.0750	(T6) 156.7	156.0750	(T6) 156.7	A	Medical Evac Tone 6
20	A/G	AIRGUARD	Emergency	168.6250	0.0	168.6250	(T1) 110.9	A	Emergency Use Only

<b>5. Special Instructions</b>
--------------------------------

<b>6. Prepared by (Communications Unit Leader): Name: C.Perry</b>	Signature:
---	------------

# ICS 205 - INCIDENT RADIO COMMUNICATIONS PLAN

CONTROLLED UNCLASSIFIED INFORMATION//BASIC

<b>1. Incident Name:</b> Shelly Branch X / Structure Group Page 3	<b>2. Date/Time Prepared</b> Date: 07/09/2024 Time: 1930	<b>3. Operational Period:</b> Date From: 07/10/24      Date To: 07/11/24 Time From: 0700              Time To: 0700
---	--	---

4. Communications									
Ch#	Function	Name	Assigned To	Rx Freq	Rx Tone	Tx Freq	Tx Tone	Mode	Notes
1	COMMAND	NIFC C3	ALL DIVS	170.4250	(T3) 131.8	168.0750	(T3) 131.8	A	English Peak
2	COMMAND	NIFC C10	ALL DIVS	170.4125	(T3) 131.8	165.9625	(T3) 131.8	A	Quartz Lookout
3	COMMAND	NIFC C11	TBD	170.6875	(T3) 131.8	166.5750	(T3) 131.8	A	Unassigned
4	COMMAND	NIFC C12	ALL DIVS	173.0375	(T3) 131.8	167.3250	(T3) 131.8	A	Helispot 5
5	TACTICAL	CDF T14	DIV A	159.3075	(T16) 192.8	159.3075	(T16) 192.8	A	
6	TACTICAL	CDF T15	DIV B	151.1825	(T16) 192.8	151.1825	(T16) 192.8	A	
7	TACTICAL	CDF T24	DIV C	151.3325	(T16) 192.8	151.3325	(T16) 192.8	A	
8	TACTICAL	CDF T35	DIV D	151.4675	(T17) 67.0	151.4675	(T17) 67.0	A	
9	TACTICAL	CDF T36	ETNA	159.3225	(T17) 67.0	159.3225	(T17) 67.0	A	
10	TACTICAL	CDF T37	QUARTZ	151.1525	(T17) 67.0	151.1525	(T17) 67.0	A	
11	TACTICAL	VFIRE 25	GREENVIEW	154.2875	(T6) 156.7	154.2875	(T6) 156.7	A	
12	TACTICAL	VFIRE 26	UNASSIGNED	154.3025	(T6) 156.7	154.3025	(T6) 156.7	A	
13	A/G CMD	A/G CMD	ALL DIVS	166.6000	0.0	166.6000	0.0	A	Overhead Use Only
14	A/G TAC	A/G TAC	ALL DIVS	168.3750	0.0	168.3750	0.0	A	
15	TACTICAL	CALCORD	ALL DIVS	156.0750	(T6) 156.7	156.0750	(T6) 156.7	A	
16	A/G	AIRGUARD	EMERGENCY	168.6250	0.0	168.6250	(T1) 110.9	A	
17									
18									
19									
20	A/G	AIRGUARD	EMERGENCY	168.6250	0.0	168.6250	(T1) 110.9	A	

**5. Special Instructions**

---

<b>6. Prepared by (Communications Unit Leader): Name: C.Perry</b>	Signature:
---	------------

AIR OPERATIONS SUMMARY ICS-220						Time Prepared 1700	Date Prepared 7/9/2024	Prepared By <i>Dakota Fulks ASGS</i>					
Incident Name / Number SHELLY		Sunrise 0541	Sunset 2048	Airport A30	Pumpkin 2030	Shutdown 2030	Operational Period - Date 7/10/2024				Operational Period - Time 0730-2030		
<b>General Remarks, Safety Notes, Hazards, Air Operations Special Equipment, etc.</b> <i>*All Aircraft orders go to Scott Valley Helibase</i> <i>*Be aware of retardant avoidance areas, 300ft away from waterways and bodies of water.</i> <i>*Sanitize Buckets before changing water sources.</i> <i>*Clear drop area/line before initiating drop sequence.</i> <i>*Be cognizant of all overhead and environmental hazards while working with Aircraft.</i> <i>*All GPS Is to be collected in DD° MM.MMM'</i> <i>*ALL water and retardant picks/drops need to be tracked and recorded</i> <i>*Aviation dally cost to: <a href="mailto:Scottvalleyhb2023@gmail.com">Scottvalleyhb2023@gmail.com</a></i>						<b>Hellbase Information</b> <b>Scott Valley Helibase A30</b> 530-468-1294 41 33.395 N 122 51.208 W		<b>**day to day changes with sunrise/sunset/pumpkin times</b> <b>**pumpkin 2030 reflects 07/10/24</b>				<b>Medivac Ship Information</b> <b>Short Haul</b> Name: Krassel Helitack Phone: Make/Model: AS350B3E Location: SVHB <b>Request Procedure for These Aircraft:</b> Communications/dispatch on Command,	
Incident Frequencies	RX	Tone	TX	Tone	AM/FM	Position	Name	Phone	EQUIPMENT/SUPPLIES				
TFR Victor	120.5250		120.5250		AM	AOBD							
Briefing Victor	132.5750		132.5750		AM	AOBD	Kyle Beinschroth	760-617-9493					
AirTactics	164.7750		164.7750		FM	ASGS							
						ASGS-T	Dakota Fulks	530-736-2863					
A/G CMD	166.6000		166.6000		FM	HEBM-SVHB	Lee Stewart	775-220-6364					
A/G TAC	168.3750		168.3750		FM	ABRO	Lauren Lucas	207-318-9697					
TOLC	169.2000		169.2000		FM								
DECK	163.1000		163.1000		FM								
AIR GUARD	168.6250		168.6250	110.9	FM	HEBM-SIY	Dennis Cobb	530-526-6994					
CALCORD	156.0750	156.7	156.0750	156.7	FM								
						UAO	Tyler Detrick	530-925-9668					
HELICOPTERS - Scott Valley Helibase						HELICOPTERS - Siskiyou Helibase							
FAA #	TYPE	Make/Model	Helibase	Start	Avail	Remarks	FAA #	TYPE	Make/Model	Airport	Start	Avail	Remarks
503	3	AS350B3E	SVHB	0800	0830	Recon, Bux, PSD, IA	N181EH	3	AS350B3E	SIY	0800	0830	Recon
N353SH	3	AS350B3E	SVHB	0800	0830	Short Haul,Recon,Bux,PSD,IA	N4582D	2	UH-1H	SIY	0800	0830	Bucket
502	3	AS350B3E	SVHB	0800	0830	Recon, Bux, PSD, IA	N5517N	2	UH-1H	SIY	0800	0830	Bucket
532	2	Bell 205A++	SVHB	0800	0830	Bux,Troop transport,Recon	N45917	1	S-61	SIY	0800	0830	Tanked
							N805PJ	1	UH-60	SIY	0800	0830	Bucket
N357KA	1	Kmax	SVHB	0800	0830	Bux, Cargo	N80BH	1	UH-60	SIY	0800	0830	Bucket
N675TH	1	Kmax	SVHB	0800	0830	Bux, Cargo	N517MB	1	UH-60	SIY	0800	0830	Bucket
N39HX	1	Kmax	SVHB	0800	0830	Bux, Cargo	N6962R	1	S-64	SIY	0800	0830	Tanked
N40HX	1	Kmax	SVHB	0800	0830	Bux, Cargo	G841	1	UH-60				24 hour hoist
FIXED WING AA/HLCO						Night Operations							
FAA #	Call Sign	Make/Model	Base	Start	Avail	Remarks	FAA #	TYPE	Make/Model	Airport	Start	Stop	Remarks
N32WS	AA05	AC690	SIY	0800	0830								
N14HX	507	Bell 407HP	SVHB	0800	0830	HLCO, IR							
							N486DF	1	S70i	SIY			



# FINANCE MESSAGE

<b>Fire Name:</b> Shelly Fire
<b>Fire Number:</b> CA-KNF-005159
<b>Accounting Code:</b> P5 R18J (0505)
<b>Email:</b> <a href="mailto:2024.shelly.finance@firenet.gov">2024.shelly.finance@firenet.gov</a>
<b>Incident Phone:</b> 530-536-0781

## Finance Documents Needed upon “Check In” (If Not Already Submitted):

Please email these documents or scan the QR Code below, attach & submit.			
<b>FED Equipment/ Crews:</b> <ul style="list-style-type: none"> <li>• Manifest - showing employment type (GS or WG) or AD rates if applicable</li> </ul>	<b>Overhead:</b> <ul style="list-style-type: none"> <li>• AD/Casual Hire Form</li> <li>• If regular Agency please ensure “GS” or “WG” is written on your CTR</li> </ul>	<b>Contract Equipment/ Contract Crews:</b> <ul style="list-style-type: none"> <li>• Agreement</li> <li>• Manifest</li> <li>• Resource Order</li> <li>• Inspections</li> </ul>	<b>Cooperator:</b> <ul style="list-style-type: none"> <li>• Cooperative Agreement</li> <li>• Resource Order</li> </ul>

### When emailing finance:

- Overhead/FED: *subject line:* TIME, Resource #, Resource Name
- Equipment/Cooperator: *subject line:* EQTR, Resource #, Resource Name

**Prior to your demob date, please contact Finance *via email* to expedite the demob process. Upon submittal of your final CTR/Shift Tickets, Finance will email you copies of your pay documents for review and signature.**

**Local Government Resources & CalOES on CFAA also check-in here:**



**Rick Young CalOES AREP  
616-541-3165**





SHELLY INCIDENT  
JULY 10, 2024

# Identifying & Managing Stress



## What does it look like?

- Increased emotional response: someone who is normally calm suddenly becomes irritable, angry, or quick tempered
- Decreased Emotional Response: someone who is normally animated and social becomes quiet, withdrawn, or begins to isolate themselves
- Other abrupt changes in emotions or behaviors

## What can you do about stress?

**Focus on what you're able to control:**

- **Eat right, stay hydrated!**
- **Get enough rest!**
- **Communicate with friends and family!**

If you're feeling overwhelmed, or if you feel like talking to someone can be helpful – HRSP is able to assist and/or point you in the right direction.

Adam Alvarez – HRSP - (707) 373-8715

NFFE Union Contact:

Gay Baxter Title: Local 1865 Vice President

E-mail: [gay.baxter@usda.gov](mailto:gay.baxter@usda.gov)

Phone: Cell – (530) 598-6095

# TRAINING SPECIALIST MESSAGE

## Trainer / Mentors:

If in the event:

You are leaving the incident before your assigned trainee

Or

Your trainee is reassigned

You must complete a performance evaluation for the period the trainee was assigned to you

Shelly Fire- CA-KNF-5159



**John Fakehany**  
Training Specialist  
C# 909-6939748

Email: [John.Fakehany@Firenet.gov](mailto:John.Fakehany@Firenet.gov)

Shelly Fire- CA-KNF-5159



## Logistics Hours

### Shelly Fire

<b>Caterer Hours:</b>	<b>Breakfast: 0600 - 0900</b> <b>Dinner: 1800 - 2130</b>
<b>Shower:</b>	<b>0500-1200, 1400 – 2300</b>
<b>Supply:</b>	<b>0700-2100</b>
<b>Laundry:</b>	<b>0500-2200</b>
<b>Fuel Tender</b>	<b>0600-1300, 1500-2200</b>

**THIS PAGE INTENTIONALLY LEFT BLANK**

# CIIMT 12 Line Order Worksheet



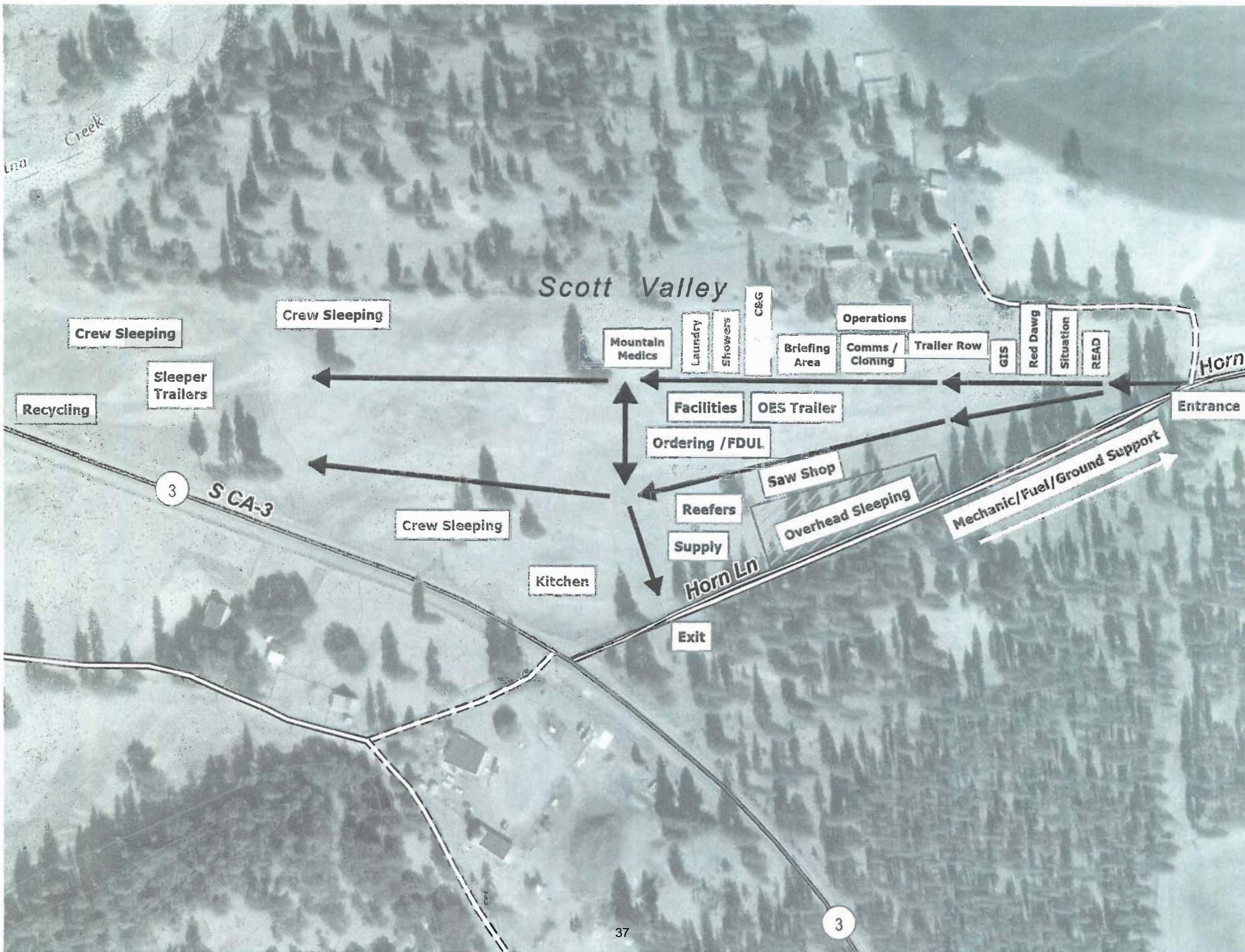
Date, Time, and From Who Order Was Placed:	Order Number:	Delivery Location and Time (Div, LZ, DP, Lat/Long, etc)	Delivery Mode (Delivery, Pickup, Helo, etc.):
Order received in Communications by:		Delivery by who & time and/or date scheduled. Detailed instructions and notes if needed:	
<b>Item # Description</b> <i>Note: Items match reference cards carried by Team 12 operations personnel</i> <b>Quantity Ordered</b>			
1	<b>Mark III Pump Kit:</b> Contains frame and Allce Pack with Straps, 1ea 10' x 1.5" Hard Suction, Instructions, Tool Roll Kit, 1ea 35GPM Nozzle, 1ea 60GPM Nozzle, 1ea Twin Tip Nozzle 1", 1qt two cycle oil, Packsack-waterproof w/straps, Collapsible Bucket, Hand Primer, 1ea 10' x 20' Plastic Sheeting, 1ea 5 Gallon Fuel Can with Adapters, 1ea 1.5" Check and Bleeder Valve, 1ea 1.5" Foot Valve, 1ea 1.5" Pressure Relief Valve, 1ea 1.5" Gated Wye, 1ea Spanner Wrench, P-Cord		
2	<b>UNI-Engine (Kiump Pump)</b> Dimensions: 7' wide x 10' Long, 1000 Gallon Capacity, 13 HP, 90 GPM, @ 110 psi, Unleaded Fuel, 24' of 2" Hard Suction, 1000' of 1.5", 800' of 1", 400' ¾" Hose, Self-leveling System with Manual Jacks, 1600 lbs. Fully Equipped w/Type-2 Helo Cables, 5 Gallons of Foam with proportioner		
3	<b>Norton Hose Kit</b> 1 ½" Hose – 5000 Feet, 1" Hose – 2000 Feet, ¾" Hose 2000 Feet, 1 ½" Gated Wye's – 25ea, 1 ½" to 1" Reducers – 25 ea, 1" to ¾" Reducers 25 ea, 1" Combination Nozzles – 25 ea, ¾" Nozzles – 25 ea, Hose Clamps – 3 ea, Class A Foam – 25 Gallons, 1 ½" Combo Nozzles – 5 ea, ¾" Wye's – 25 ea		
4	<b>Half-Norton Hose Kit</b> 1 ½" Hose, 2500 Feet, 1" Hose, 1000 Feet, ¾" Hose, 1000 Feet, 1 ½" Gated Wye's, 12ea, 1 ½" to 1" Reducers, 12ea, 1" to ¾" Reducers, 12ea, 1" Combo Nozzles, 12 ea, ¾" Nozzles, 12ea, Hose Clamps – 3 ea, Class A Foam – 10 Gallons, 1 ½" Combo Nozzles – 2 ea, ¾" Wye's – 12 ea		
5	<b>Coyote Package (For a 20 Person Crew - Approx 785lbs)</b> 50 gal Water – 12 cases, 25 gal Gatorade – 6 cases, 3 Cases of MRE's, 40ea Sack Lunches, 1 case – AA Batteries, 5 Rolls Toilet Paper, 20 GL Gasoline, 4 GL Bar and Chain Oil, ½ Box Trash Bags, 25ea Bath-In-A-Bags, 25ea Towel, Cleansing 12" x 30", 2 to 4ea Gold Bond, 40oz. 2-Cycle Mix,		
6	<b>1000 foot hose lay kit includes the following:</b> 10ea 100' x 1 1/2" Hose, 10ea 100' x 1" Hose, 10ea 1 1/2" Gated Wyes, 10ea 1 1/2" to 1" Reducers, 10ea 1" Nozzles		
7	<b>2000 foot hose lay kit includes the following:</b> 20ea 100' x 1 1/2" Hose, 20ea 100' x 1" Hose, 20ea 1 1/2" Gated Wyes, 20ea 1 1/2" to 1" Reducers, 20ea 1" Nozzles		
8	<b>3000 foot hose lay kit includes the following:</b> 30ea 100' x 1 1/2" Hose, 30ea 100' x 1" Hose, 30ea 1 1/2" Gated Wyes, 30ea 1 1/2" to 1" Reducers, 30ea 1" Nozzles		

CIIMT 12 Line Order Worksheet - Page 2

Item #	Description	NFES #	Quantity Requested	Item #	Description	NFES #	Quantity Requested
9	Hose (50') Garden, 3/4"	1016		34	Gas Unleaded (Gallons)		
10	Hose (100'),1"	0966		35	Oil 2 Cycle (Pints)	0344	
11	Hose (100'), 1 1/2"	0967		36	Bar oil (Qts)	1869	
12	Nozzle, Garden, 3/4"	0136		37	Drp torch - ea	0241	
13	Nozzle, Forester, 1"	0024		38	Drip torch mix 3.5 : 1.5 (gallon)		
14	Nozzle, KK Type, 1"	1081		39	Fusees BX	0105	
15	Nozzle, KK Type, 1 1/2"	1082		40	Flare Gun Rounds (12/BX)	0687	
16	Wye, Gated, 3/4"	0739		41	Cartridge #6 purple (box)	0372	
17	Wye, Gated, 1"	0839		42	Batteries "AA" Pkg, (24/PKG)/BX	0030	
18	Wye, Gated, 1 1/2"	0883		43	Ribbon, Flagging (Specify Color)		
19	Inline Tee, 1" x 1" x 3/4"	1809		44	Water, Cubies		
20	Inline Tee 1" x 1" x 1"	2240		45	Water, Bottled, Cases		
21	Inline Tee 1 1/2" X 1"	0731		46	Gatorade		
22	Reducer 1" X 3/4"	0733		47	MRE's (12/BX)	1842	
23	Reducer 1 1/2" to 1"	0009		48	Heavy Mill Plastic	0283	
24	Increaser, 3/4" X 1"	2235		49	Washcloth, waterless, Cleansing	0206	
25	Increaser, 1" X 1 1/2"	0416		50	Wrap, Structure 54" x 300'	0881	
26	Foam 5 gal	1145		51	Sprinkler Kit		
27	Foam 4 oz (For Backpack Pump)	3400		52	Mark 3 Pump		
28	Backpack Pump	1197		53	Mark 3 Pump Kit w/10 gal Mix Fuel		
29	Pumpkin (Gallons?)			54	Chainsaw Kit	0340	
30	Porta-Tank (Gallons?)			55	Mop-Up Kit, 3-wand	0772	
31	Shovel	170		56	Pump Kit, Lightweight, 2-Cycle	0670	
32	Combi Tool	146		57	Gas, raw and 2 qts 2-Cycle Oil, ea		
33	McCloud	296		58	Lightweight Pump Kit - Cache w/5 gal fuel		
				59	Gas, raw, 1 gallon w/ 1qt 2-cycle oil, ea		

Notes:





Scott Valley

Crew Sleeping

Crew Sleeping

Sleeper Trailers

Recycling

3

S CA-3

Crew Sleeping

Kitchen

Mountain Medics

Laundry

Showers

C&G

Briefing Area

Operations

Comms / Cloning

Trailer Row

GIS

Red Dawg

Situation

READ

Horn

Entrance

Facilities

OES Trailer

Ordering /FDUL

Saw Shop

Reefers

Supply

Overhead Sleeping

Mechanic/Fuel/Ground Support

Horn Ln

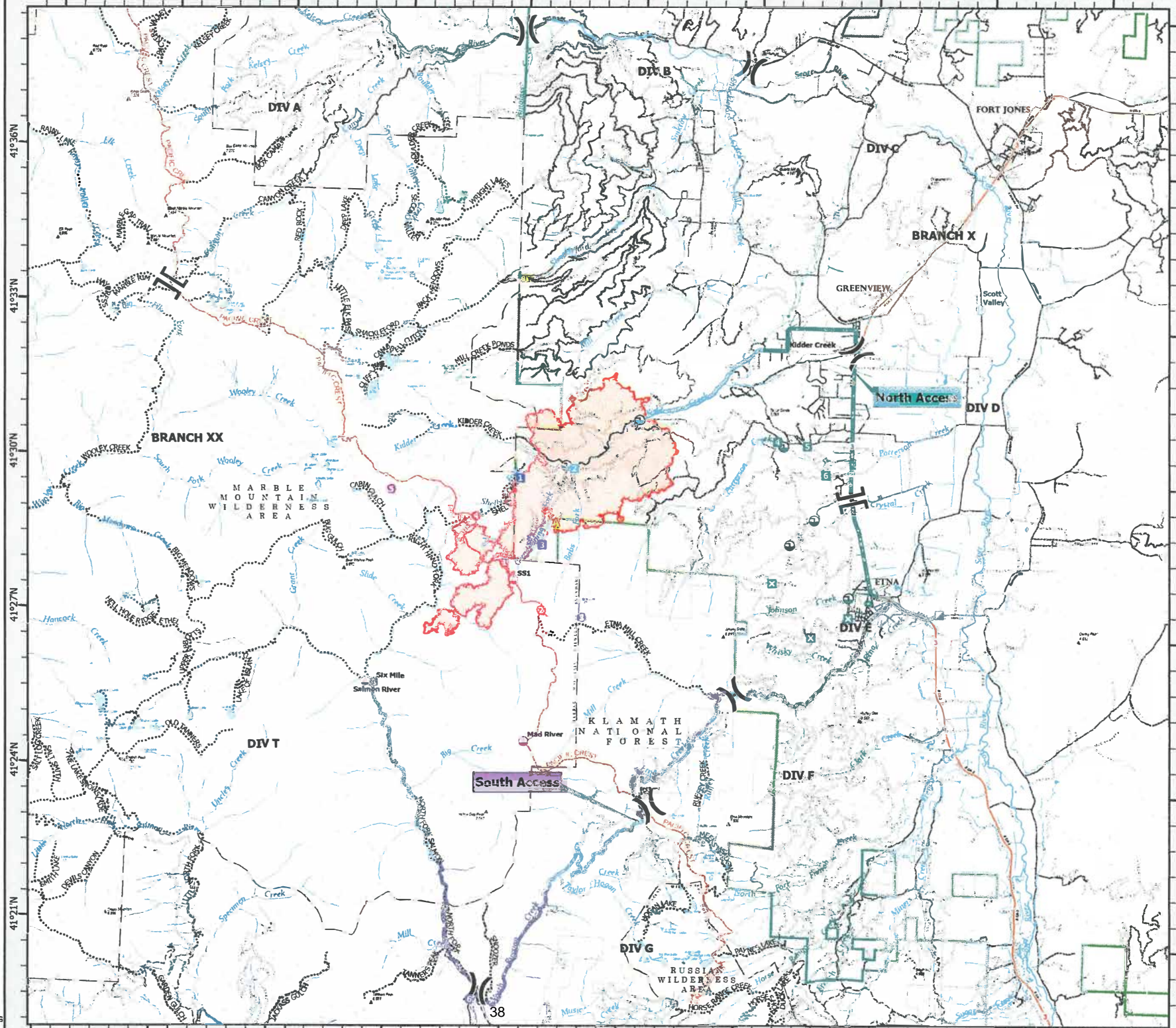
Exit



**TRANSPORTATION**  
SHELLY  
07/10/2024



- Helispot
- Helibase
- Sling Site
- Division Break
- Branch Break
- Incident Command Post
- Drop Point
- Closure
- Camp
- Staging Area
- Value at Risk
- Gate
- Bridge
- Repair Point
- Safety Zone
- Hazard
- Draft Site
- Uncontained
- Wildfire Daily Fire Perimeter
- Road - Light Duty - Dirt
- Road - Light Duty - Gravel
- Road - Light Duty - Paved
- Road - Light Duty - Unspecified
- Road - Unimproved
- Secondary Highway
- Road, Unspecified
- Road, Paved
- Road, Dirt
- National Trail
- Trail
- USFS Wilderness
- USFS Administrative Forest
- Non Forest
- Transport Routes
- North Access
- South Access



0 0.75 1.5 3 Miles  
1:100,000 NAD83 UTM 11N







# MEDICAL PLAN (ICS 206 WF) CIIMT 12

1. Incident Name				2. Operational Period				
<b>SHELLY INCIDENT CA-KNF-005159</b>				Date/Time: <b>07/10/2024 – 07/11/2024 0700-0700</b>				
3. EMS / Ambulance Services/Aid Stations								
Name	Location	Frequency/Phone		Advanced Life Support (ALS)				
		Yes	No					
MT. SHASTA AMBULANCE	YREKA, CA	Shelly Communications		X				
ETNA AMBULANCE	ETNA, CA	Shelly Communications		X				
MT. MEDICS Aid Station	ICP	530-859-2799		X				
4. Air Rescue / Air Ambulance Services								
Name	Phone	Type of Aircraft & Capability						
KRASSEL (N353SH)	Shelly Communications	SHORT HAUL BLS						
MERCY AIR	Shelly Communications	AIR AMBULANCE, 24 HR ALS, NO HOIST						
PHI	Shelly Communications	AIR AMBULANCE, 24 HR ALS, NO HOIST						
REACH AIR	Shelly Communications	AIR AMBULANCE, 24 HR ALS, NO HOIST						
CHP	Shelly Communications	0600-0230, ALS, DAY HOIST ONLY, NO SHORT HAUL						
COAST GUARD	Shelly Communications	24 HR HOIST, BLS ONLY						
National Guard	Shelly Communications	24 HR HOIST, BLS ONLY						
5. Hospitals (all times estimated from incident location)								
Name & Level	GPS Datum – WGS 84 Degrees Decimal Minutes		Travel Time		Phone	Helipad		Address
	Lat:		Air	Gnd		Yes	No	
UC DAVIS MEDICAL CENTER LEVEL 1 TRAUMA	33°33.292'N		1.5hr	6hr	916-734-3636	X		2315 Stockton Blvd. Sacramento, CA 95817
	Long:							
MERCY MEDICAL CENTER LEVEL 2 TRAUMA	40°34.325'N		40m	3hr	530-225-7200	X		2175 Roseline Ave. Redding, CA 96001
	Long:							
ASANTE ROGUE REGIONAL MEDICAL CENTER-LEVEL 2	42°19.07'N		20m	2hr	541-789-7100	X		2825 E. Barnette Rd. Medford, OR 97504
	Lat:							
	Long:							
MERCY MEDICAL CENTER LEVEL 3 TRAUMA	41°19.111'N		30m	2hr	530-926-6111	X		914 Pine St. Mt. Shasta. CA 96067
	Lat:							
	Long:							
FAIRCHILD MEDICAL CENTER LEVEL 4 TRAUMA	41°43.181'N		20m	1.5h	530-842-4121	X		444 Bruce St. Yreka, CA 96097
	Lat:							
	Long:							
6. Division / Crew Emergency Pre-Plan								<i>Update and discuss with assigned resources daily.</i>
Fireline EMT / Medic's Division / Branch Location								
Air Hoist site location site: Lat: / Long: / Elevation:								
Helispot: Lat: / Long: / Elevation:								
7. Prepared By (Medical Unit Leader)			8. Date/Time		9. Reviewed By (Safety Officer)		10. Date/Time	
<i>Ron Sandler</i> MEDL			07/09/2024 1600		<i>Michael Seymour</i> SOFC		07/09/2024 1600	

# MEDICAL PLAN (ICS 206 WF) CIIMT 12

Medical Incident Report					
<p><b>FOR A NON-EMERGENCY INCIDENT, WORK THROUGH CHAIN OF COMMAND TO REPORT AND TRANSPORT INJURED PERSONNEL AS NECESSARY.</b></p> <p><b>FOR A MEDICAL EMERGENCY: IDENTIFY ON SCENE INCIDENT COMMANDER BY NAME AND POSITION AND ANNOUNCE "MEDICAL EMERGENCY" TO INITIATE RESPONSE FROM IMT COMMUNICATIONS/DISPATCH.</b></p>					
<p><b>Use the following items to communicate situation to communications/dispatch.</b></p>					
<p><b>1. CONTACT COMMUNICATIONS / DISPATCH</b> (Verify correct frequency prior to starting report)  <i>Ex: "Communications, Div. Alpha. Stand-by for Emergency Traffic."</i></p>					
<p><b>2. INCIDENT STATUS:</b> Provide incident summary (including number of patients) and command structure.  <i>Ex: "Communications, I have a Red priority patient, unconscious, struck by a falling tree. Requesting air ambulance to Forest Road 1 at (Lat./Long.) This will be the Trout Meadow Medical, IC is TFLD Jones. EMT Smith is providing medical care."</i></p>					
Severity of Emergency / Transport Priority	<p><input type="checkbox"/> <b>RED / PRIORITY 1 Life or limb threatening injury or illness. Evacuation need is IMMEDIATE</b>  <i>Ex: Unconscious, difficulty breathing, bleeding severely, 2° – 3° burns more than 4 palm sizes, heat stroke, disoriented.</i></p> <p><input type="checkbox"/> <b>YELLOW / PRIORITY 2 Serious Injury or illness. Evacuation may be DELAYED if necessary.</b>  <i>Ex: Significant trauma, unable to walk, 2° – 3° burns not more than 1-3 palm sizes.</i></p> <p><input type="checkbox"/> <b>GREEN / PRIORITY 3 Minor Injury or illness. Non-Emergency transport</b>  <i>Ex: Sprains, strains, minor heat-related illness.</i></p>				
Nature of Injury or Illness & Mechanism of Injury			Brief Summary of Injury or Illness <i>(Ex: Unconscious, Struck by Falling Tree)</i>		
Transport Request			Air Ambulance / Short Haul/Hoist Ground Ambulance / Other		
Patient Location			Descriptive Location & Lat. / Long. (WGS84)		
Incident Name			Geographic Name + "Medical" <i>(Ex: Trout Meadow Medical)</i>		
On-Scene Incident Commander			Name of on-scene IC of Incident within an Incident <i>(Ex: TFLD Jones)</i>		
Patient Care			Name of Care Provider <i>(Ex: EMT Smith)</i>		
<p><b>3. INITIAL PATIENT ASSESSMENT:</b> Complete this section for each patient as applicable (start with the most severe patient)</p>					
Patient Assessment: See IRPG PAGE 106					
Treatment:					
<p><b>4. TRANSPORT PLAN:</b></p>					
Evacuation Location (if different): (Descriptive Location (drop point, intersection, etc.) or Lat. / Long.) Patient's ETA to Evacuation Location:					
Helispot / Extraction Site Size and Hazards:					
<p><b>5. ADDITIONAL RESOURCES / EQUIPMENT NEEDS:</b></p>					
<i>Example: Paramedic/EMT, Crews, Immobilization Devices, AED, Oxygen, Trauma Bag, IV/Fluid(s), Splints, Rope rescue, Wheeled litter, HAZMAT, Extrication :</i>					
<p><b>6. COMMUNICATIONS: Identify State Air/Ground EMS Frequencies and Hospital Contacts as applicable</b></p>					
Function	Channel Name/Number	Receive (RX)	Tone/NAC *	Transmit (TX)	Tone/NAC *
COMMAND					
AIR-TO-GRND					
TACTICAL					
<p><b>7. CONTINGENCY: Considerations:</b> If primary options fail, what actions can be implemented in conjunction with primary evacuation method? Be thinking ahead. .</p>					
<p><b>8. ADDITIONAL INFORMATION:</b> Updates/Changes, etc. .</p>					
<p><b>REMEMBER:</b> Confirm ETA's of resources ordered. Act according to your level of training. Be Alert. Keep Calm. Think Clearly. Act Decisively. .</p>					