

# INCIDENT ACTION PLAN SHELLY INCIDENT

CA-KNF-005159

P5 R18J (0505)



## OPERATIONAL PERIOD

7/12/2024 0700

to

7/13/2024 0700



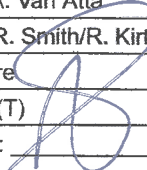
Check-In, IAP, Maps,  
Demob, Briefing

Friday

Friday



## ORGANIZATION ASSIGNMENT LIST (ICS 203)

<b>1. Incident Name:</b> SHELLY		<b>2. Operational Period: Date From:</b> 7/12/2024		<b>Date To:</b> 7/13/2024	
		<b>Time From:</b> 0700		<b>Time To:</b> 0700	
<b>3. Incident Commander(s) and Command Staff:</b>			<b>7. Operation Section:</b>		
IC/UC's	M. Conklin/K. Cunningham		Operations	J. Owings/S. Lauderdale/J. Flores(T)	
Deputy	N. Johnny/P. Russell(T)		Deputy Operations	K. Litz/J. Chester(T)/A. Schultze(T)	
Safety Officer	M. Seymour/M. Lipson		Night Ops	R. Szczepanek/K.Bohall	
Information Officer	L. Sieliet/S. Bishop/D. McMillin(T)		Strategic Ops	E. Zanutto/J. Sohr(T)	
Liaison Officer	J. Martinez/J. Neumann(T)/T. Gonzalez(T)		<b>Branch</b>	<b>X</b>	<b>J. Walton (12), R. Wettstein (T)</b>
			Division/Group	A	G. Lowdermilk/S. Rushing (T)
<b>4. Agency/Organization Representatives:</b>			Division/Group	B	C. Markey(12)/M. Brunton(9270G)
Agency/Organization	Name		Division/Group	C	R. Valles
USFS	C. Christofferson/N. Kelly(T)/D. Carlson(T)		Division/Group	D	S. Chapman (9247C)
CALFIRE	M. Smith		Division/Group		
CDCR	J. Leventon		<b>Branch</b>	<b>XX</b>	<b>T. Pederson, T. Richter (12)</b>
Timber Industries	D. Quigley		Division/Group	E	S. Pindell (12) /E. Mattson(T)
Karuk Tribe	G. Moon		Division/Group	F	D. Helgeson
READ	M. Meneks/C. Maciel(T)		Division/Group	G	A. Luna/R. Flitt(T)
Cultural Specialist	M. Sanchez		Division/Group	T	R. Noxon/J. Bird(T)
BIA	G. Perry		Division/Group	Night	TBD
			Division/Group		
			<b>Branch</b>	<b>Contingency</b>	<b>L. Wright</b>
			Division/Group	North	S. Kovacs/J. Stitt(T)
			Division/Group	South	R. DeCamp
			Division/Group	East	M. Milojevich(12)/S. Clement(12)(T)
			Division/Group		
			<b>Branch</b>	<b>Structure</b>	<b>J. Howard (12)</b>
			Division/Group	Etna	R. West(12)
			Division/Group	Quartz Valley	J. Manning(4226C) (12)
<b>5. Planning Section:</b>			Division/Group	Greenview	C. Reginatto (12)
Chief	B. Vergne/G. Ozard/ R. Verdie(T)/ J. Saiz(T)		Division/Group		
Deputy	S. Anderson		Division/Group		
Resource Unit	M. Yeun/S. Frank(T)/T.Hullquist(T)		<b>Branch</b>		
Situation Unit	R. Rook/R. Toby/R. Resnick(T)		Division/Group		
Documentation Unit	RIST		Division/Group		
Demobilization Unit	J. Grisedale		Division/Group		
GISS	R. Gonzalez/B. Hurtado		Division/Group		
FBAN	P. Doyle		Division/Group		
IMET	J. Ruthford/J. O'Brien(T)		<b>Air Operations Branch</b>		<b>Director: K. Beinschroth</b>
Training	J. Fakehany		Air Support Group Supervisor		D. Fulks(T)
HRSP	A. Alvarez		Air Tactical Group Supervisor		
<b>6. Logistics Section</b>			Siskiyou County Helibase Manager		D. Cobb
Chief	S. Ashbach/S. Irvine/D. Alicea/J. Fox(T)				
Supply Unit	M. Keck		<b>8. Finance/Administration Section:</b>		
Facilities Unit	A. Curley/E. Jensen(T)		Chief	R. Lang/L. Wilson/M. White/D. Dukart(V)	
Ground Support Unit	C. Syler/J. Lantello(T)		Time Unit	C. Scott/A. Van Atta	
Communications Unit	C. Perry		Procurement Unit	P. Wood/R. Smith/R. Kirtland(T)	
Medical Unit	B. Bennewate		Comp/Claims Unit	D. McClure	
Food Unit	S. Katanich		Cost Unit	E. Molina(T)	
<b>Prepared By: Name:</b> B. Vergne/G. Ozard		<b>Position/Title:</b> PSC		<b>Signature:</b> 	
<b>ICS 203</b>		<b>Date/Time:</b> 7/11/2024 2300 hours			

# FIRE WEATHER FORECAST

FORECAST NO. 7

NAME OF INCIDENT: Shelly

PREDICTION FOR: Friday July 12, 2024

UNIT: Klamath National Forest

TIME AND DATE

SIGNED: Jonathan O'Brien/Julia E. Ruthford

FORECAST ISSUED: 1900 Thursday 7/11/24

Jonathan O'Brien Julia Ruthford - (530) 440-4898  
Incident Meteorologist (t) Incident Meteorologist

---

**WEATHER DISCUSSION:** Upper level ridging will continue to bring hot, dry and unstable conditions. Conditions are expected to be warmer and drier versus the past couple of days. Expect lower min RHs and notably poorer RH recoveries tonight. Due to some limited moisture aloft, there will remain potential for PyroCumulus to develop on top of the column if the fire produces enough heat. A continued onshore pressure gradient will bring another round of gusty SW-NW ridge level and down-canyon winds this afternoon & evening. Winds overall will follow similar trends to recent days but stronger SW transport flow aloft may yield better and faster smoke clearing.

---

## **FRIDAY:**

**WEATHER:** Hot, dry & unstable. Sunny but smoky with afternoon cumulus build-ups along the Mtns.

**MAXIMUM TEMPERATURE:** Highs ranging from near 90 along ridges to low 100s valleys.

**MINIMUM RELATIVE HUMIDITY:** 10-15% in valleys and 15-19% along ridges.

### **20 FOOT WINDS:**

**SW of the PCT** – Up-slope winds of 3-5 mph developing late morning will become SW-W up-canyon 8-12 mph early afternoon with gusts of 15-18 mph possible mid to late afternoon.

**NE of the PCT** – Up-slope winds of 2-4 mph becoming SE to NE up-canyon 4-7 mph winds early afternoon then reversing to SW to NW winds around 1400 and increasing to 14-18 mph with localized gusts to 25 mph late afternoon through the evening along ridges and down-canyon winds of 5 to 7 mph drainage bottoms.

**Scott Valley** – E-SE winds 3-5 mph in the morning becoming S-SW 5-7 mph around 1200 and increasing to 10-15 mph with gusts to 20 mph mid afternoon and continuing into the evening, turning more W by evening.

**STABILITY:** Smoky valley inversions lifting by late morning. Greater clearing potential today due to stronger transport flow aloft but some hazy smoke will remain over the area. Deep vertical mixing likely mid to late afternoon with enhanced potential for column growth due to mid level moisture supporting PyroCumulus development.

**CHANCE OF RAIN:** 0% **LAL:** 1 **SMOKE TRANSPORT WIND:** S 5-10 mph becoming SW 15-25 mph

---

## **FRIDAY NIGHT:**

**WEATHER:** Warm and notably drier with strong mid slope thermal belts and poor RH recoveries.

**MINIMUM TEMPERATURE:** Low to mid 70s along slopes & ridges and in the 60s in valleys.

**MAXIMUM RELATIVE HUMIDITY:** Around 20-28% slopes & ridges and 40-45% valleys.

**20 FOOT WINDS:** SW to NW 12-18 mph diminishing around 2100 then becoming N-NE 7-12 mph along ridges with downslope/down-valley 2-4 mph elsewhere.

**STABILITY:** Some smoke likely to settle into valleys including Scott Valley, but may be less than prior nights.

**CHANCE OF RAIN:** 0% **LAL:** 1 **SMOKE TRANSPORT WIND:** S-SW 10-15 mph.

---

**SATURDAY:** Similarly hot to Friday. High temps ranging from upper 80s along ridges to near 100 in the valleys. Min RHs in the low to mid teens with poor overnight recoveries around 25% along slopes and ridges, and around 40-45% valleys. Terrain driven up-slope and up-canyon winds will continue but be a little lighter with NW down-canyon winds of 10-15 mph locally gusting to 20 mph late afternoon into the evening. Isolated dry thunderstorms possible in the vicinity of the fire and eastward after 1500 and through the evening.

---

**OUTLOOK FOR SUNDAY AND MONDAY:** The potential for isolated dry thunderstorm activity to continue into Sunday has increased. Depending on the timing of an upper level disturbance offshore, there may be a round of fast moving nocturnal or morning thunderstorms Sunday morning. Another round of isolated thunderstorms is likely Sunday afternoon. Breezy SW to NW afternoon & evening winds along ridges and through channeled terrain will continue, similar to recent days with no major changes in wind. Min RHs will be in the mid teens to 20% and overnight recoveries remain poor along slopes and ridges Sunday night. Some moderation in both daytime and nighttime RH is possible by Monday or Tuesday.

---

Please email weather observations to [julia.ruthford@usda.gov](mailto:julia.ruthford@usda.gov) or text them to 530-440-4898. Thanks!



## FIRE BEHAVIOR FORECAST

<b>FORECAST NUMBER:</b> 06	<b>TYPE OF FIRE:</b> Wildfire
<b>FIRE NAME:</b> Shelly	<b>OPERATIONAL PERIOD:</b> 07/12 Day/Night
<b>DATE ISSUED:</b> July 11, 2024	<b>TIME ISSUED:</b> 1830
<b>UNIT:</b> CA-KNF	<b>SIGNED:</b> /s/ Patrick Doyle, FBAN 530-310-3552

**WEATHER SUMMARY** (See Fire Wx Forecast)

**TOPOGRAPHY:** Elevations: 3900'-6,700' Slopes: 0%-100+% (0°-68°degrees)

**FUELS: Key Fuel Models, Fuel Moistures, FDR**

<b>Grass/Shrub</b>	<b>GS2</b>	<b>Forecasted PSA04:</b> NFDR (Y) ERC: 62 (up 2) BI: 42 (up 1)  *Note: FM %s in left column have been adjusted relative to Blue Ridge values.
<b>Timber</b>	<b>TU5</b>	
<b>FDPM (1hr)</b>	4 % NC*	
<b>10-hr (%)</b>	5 % NC*	
<b>100-hr (%)</b>	6 % NC*	
<b>1000-hr(%)</b>	<10 %*	
<b>Live Fuels (Seasonal grasses)</b>	¾ to fully cured	

Blue Ridge – KNF (40203) / Predictive Service Area: NC04 - Northwestern Mtn.  
NC=No change, ▲up, ▼down

**Fire Behavior (for new starts or unburned areas)**

**Probability of Ignition:** 92% Unshaded / 76% Shaded  
**Spotting Distance:** up to 0.5 mile (short range)  
Values below use **40% slope** and assume upslope spread.

Fuel Model	Day		Night		
	FL (Ft.)	ROS (Ch/Hr)	Fuel Model	FL (Ft.)	ROS (Ch/Hr)
Grass/Shrub	5-21	23-39	GS2	1-17	1-39
Timber	1-10	1-16	TU5	1-10	1-16

Live fuel moistures in shrubs and trees, having passed green-up phase.

### FIRE BEHAVIOR

#### GENERAL:

- Fire activity will be similar to yesterday, but little dryer and windier conditions in the afternoon. In the morning-- primarily diurnal; with transition in the afternoon to a W-SW to W-NW ridge-level influence until late evening. Take this into consideration for any torching and spotting.
- Fuels are very dry and receptive. Concern is for torching, spotting, or slope-reversals can lead to uphill runs, torching, or crown runs. In addition, potential for rapid rates of spread for those areas where fire is in alignment with slope, fuels, and wind.
- Very low Rh's at above 6000' and thermal belts will be most active overnight, and first to come into play during daytime burn period.
- Watch out for when the smoke inversion breaks. If it does expect fire activity increase with potential for extreme fire behavior and spread to follow well into the evening. Until smoke inversion lifts or breaks, it will likely keep a lid on the fire, even though it will still be active.

#### SPECIFIC:

**DIVS A, B, C, D, E, F, G:** Active fire growth on the east & west flanks of the fire in Kidder Creek drainage. Potential for very active fire behavior in the Patterson Creek drainage. Fire will be spreading thru active surface spread, backing, flanking, with occasional single- and group- tree torching and spotting.

**DIVS T:** Expect fire behavior to remain active in area NW of Shelly Lake. Continuing to spread laterally and making uphill runs over the PCT into the Upper Kidder drainage. Fire is established in Upper Kidder. Areas below 4-5000' inversion layer, fire activity will be moderated by smoke inversion and sparse fuels from the 2017 Wallow fire. Fire spread will be dictated by fuels concentration, connectivity and thru spotting or roll-out into receptive fuels.

#### AIR OPERATIONS:

Inversion in the morning, air operations impacted by smoke.

Sunrise: 5:49am, Sunset: 8:45pm, Daylength: 14 hours, 55 minutes, 50 seconds (-1:16min)

#### SAFETY:

Limited visibility due to smoke, vegetation or topography from fire may give you a false sense of security. Use LCES to ensure you know what the fires are doing around you.



# SAFETY MESSAGE



*Fire fighter safety comes first on every fire, every time*

We are **ALL** accountable for **SAFE** behaviors  
For Day/Night Operations: **July 12, 2024**



## • CHAIN SAW OPERATIONS

- Follow "Hazard Tree Safety" guidelines, IRPG page 20.
- Look up, Look down, Look all around for hazard tree indicators.
- Only fell and buck trees within your expertise and training.
- Follow "Procedural Felling Operations" on page 84 in IRPG.
- Do not fall trees during high wind events or night operations.
- Ensure proper use of all required PPE.

### What to do if a bee stings you?

If there is a stinger remove it Apply hydrocortisone cream or calamine lotion to ease redness, itching or swelling. If itching or swelling is bothersome, take an oral antihistamine that contains diphenhydramine (Benadryl) or chlorpheniramine. Avoid scratching the sting area. This will worsen itching and swelling and increase your risk of infection.

#### Treatment for moderate reactions

1. If you can, remove the stinger as soon as possible, such as by scraping it off with a fingernail. ...
2. Wash the affected area with soap and water.
3. Apply a cold compress.
4. Take an over-the-counter pain reliever as needed. ...
5. If the sting is on an arm or leg, elevate it.



### Rapid Extraction Module Support (REMS)

- Its purpose is to provide the incident with a safety measure to extract personnel on the fireline with illnesses or injuries unable to walk out on their own.
- A team trained in advanced technical rope rescue for over-the-side rescues.
- Equipped with wheeled stokes to transport personnel to a ground or air transport.
- Some teams are equipped with Advance Life Support (ALS) equipment. Inquire with Division.

Its origins come from having a form of rescue entity in the event air resources would not be able to access or fly because of weather, smoke, inversion layer, or the risk was too high.



# ASSIGNMENT LIST (ICS 204 WF)

CONTROLLED UNCLASSIFIED  
INFORMATION/BASIC

<b>1. Incident Name:</b> <p style="text-align: center; font-size: 1.2em;">SHELLY</p>	<b>2. Operational Period:</b> Date From: 07/12/24    Date To: 07/13/24 Time From: 0700    Time To: 0700	<b>3. Branch</b> <b>Division</b> <p style="text-align: center; font-size: 1.5em;">X                      A</p>
<b>4. Operations Personnel:</b>		Page 1 of 1    Alpha

Operations Section Chief: <b>J. Owings/S. Lauderdale/J. Flores(T)</b>	Night Ops: <b>R. Szczepanek/K.Bohall</b>
Branch Director: <b>J. Walton (12), R. Wettstein (T)</b>	Branch Safety:
Division/Group Supervisor: <b>G. Lowdermilk/S. Rushing (T)</b>	Air Attack:

5. Resources Assigned:	** Resources Below in Bold are 12 Hour **							
Resource Identifier	ALS	LWD	Leader	Personnel	Request #	Hours	Reporting Location	
HC1 TALLAC		7/14	<b>Betty</b>	19	<b>C-3</b>	0700-1900	<b>Etna ICP</b>	
HC2IA SHASTA LAKE		7/16	<b>Bogdan</b>	22	<b>C-2</b>	0700-1900	<b>Etna ICP</b>	
S/T ENG3 KNF 3600C		7/20	<b>Leckness</b>	29	<b>E-227</b>	0700-1900	<b>Etna ICP</b>	
DOZ2 DEAN SMILEY		7/21	<b>Smiley</b>	2	<b>E-81</b>	1900-0700	<b>Etna ICP</b>	
FMOD HOMELAND		7/21	<b>Ingersoll</b>	2	<b>O-46</b>	0700-1900	<b>Etna ICP</b>	
FMOD WEST COAST CUTTING 1		7/21	<b>Ancel</b>	2	<b>O-157</b>	0700-1900	<b>Etna ICP</b>	
FMOD RED FLAG FIRE PROT.		7/21	<b>Smith</b>	2	<b>O-159</b>	0700-1900	<b>Etna ICP</b>	
FMOD RED FLAG		7/22	<b>Fullerton</b>	2	<b>O-186</b>	0700-1900	<b>Etna ICP</b>	
TFLD HAUPT		7/19	<b>Haupt</b>	1	<b>O-50</b>	0700-1900	<b>Etna ICP</b>	
PACK ROOS		7/24	<b>Roos</b>	1	<b>O-101</b>	0700-1900	<b>Etna ICP</b>	
SOFR BRYANT		7/22	<b>Bryant</b>	1	<b>O-147</b>	0700-1900	<b>Etna ICP</b>	
REMS 1	X		<b>Walker</b>	4	<b>O-54</b>	0700-1900	<b>Etna ICP</b>	
EMPF OWEN	X	7/19	<b>Bryan</b>	1	<b>O-92</b>	0700-1900	<b>Etna ICP</b>	
EMPF BANKS	X	7/23	<b>Banks</b>	1	<b>O-202</b>	0700-1900	<b>Etna ICP</b>	
EMPF SELLERS	X	7/23	<b>Sellers</b>	1	<b>O-268</b>	0700-1900	<b>Etna ICP</b>	
EMTF(T) NICHOLS		7/20	<b>Nichols</b>	1	<b>O-87</b>	0700-1900	<b>Etna ICP</b>	
REAF STEINWACHS		7/20	<b>Steinwachs</b>	1	<b>O-178</b>	0700-1900	<b>Etna ICP</b>	
REAF CANN		7/23	<b>Cann</b>	1	<b>O-283</b>	0700-1900	<b>Etna ICP</b>	

**6. Work Assignments:**  
 Construct direct control line from HS7 to DP1 to limit northern fire progression.  
 Identify potential indirect lines to be utilized as secondary control lines.

**7. Special Instructions:**  
 Identify potential drop points, landing zones, sling site and spike camp locations.  
 24-hour resources contact Night Ops directly for direction after 1900.

**8. Communications**

Name	Ch	Function	Rx Freq	Rx Tone	Tx Freq	Tx Tone	Mode	Notes
NIFC C10	2	COMMAND	170.4125	(T3) 131.8	165.9625	(T3) 131.8	A	Quartz Lookout
CDF T14	P3.5	TACTICAL	159.3075	(T16) 192.8	159.3075	(T16) 192.8	A	
A/G TAC	14	A/G TAC	168.3750	0.0	168.3750	0.0	A	Overhead use only
CALCORD	15	TACTICAL	156.0750	(T6) 156.7	156.0750	(T6) 156.7	A	
AIRGUARD	16	A/G	168.6250	0.0	168.6250	(T1) 110.9	A	

**9. Prepared by: Name:** M. Yeun/S. Frank(T)/T.Hullquist(T)    RESL

Signature:

<b>ICS 204</b>	Date/Time: 7/11/2024 2200	Personnel Count: 92
----------------	---------------------------	---------------------

# ASSIGNMENT LIST (ICS 204 WF)

CONTROLLED UNCLASSIFIED  
INFORMATION//BASIC

<b>1. Incident Name:</b> <p style="text-align: center; font-size: 1.2em;"><b>SHELLY</b></p>	<b>2. Operational Period:</b> Date From: 07/12/24    Date To: 07/13/24 Time From: 0700    Time To: 0700	<b>3. Branch</b> <b>Division</b> <p style="text-align: center; font-size: 1.5em;"><b>X</b>                      <b>B</b></p> <p style="text-align: center;">Page 1 of 2                      <b>Bravo</b></p>
--	---	--

<b>4. Operations Personnel:</b>	
Operations Section Chief: <b>J. Owings/S. Lauderdale/J. Flores(T)</b> Branch Director: <b>J. Walton (12), R. Wettstein (T)</b> Division/Group Supervisor: <b>C. Markey(12)/M. Brunton(9270G)</b>	Night Ops: <b>R. Szczepanek/K.Bohall</b> Branch Safety: Air Attack:

<b>5. Resources Assigned:</b>		<b>** Resources Below in Bold are 12 Hour **</b>					
Resource Identifier	ALS	LWD	Leader	Personnel	Request #	Hours	Reporting Location
STC SHU 9242C			SMITH, MARCUS	18	E-20132	0700-0700	DP 9
STC XCZ 2325C	X		LOFRANCO, ANDREW	22	E-20187	0700-0700	DP 9
STG HUU 9126G (CDCR)			FRANKLIN, JOSH	33	C-20002	0700-0700	DP 9
STG BTU 9270G (FF)			BRUNTON, MARK	33	C-20018	0700-0700	DP 9
CRW2 TBD						0700-0700	DP 9
STL LNU 9142L			MADDOCKS, JEFF		E-20009	0700-0700	DP 9
DOZ PVT E-20063 LENA			LOWREY, PAUL		E-20063	0700-0700	DP 9
DOZ PVT E-20076 R&H			SEABOURN, JERRY	2	E-20076	0700-0700	DP 9
DOZ PVT E-20077			ARCHIBALD, DAKOTA		E-20077	0700-0700	DP 9
DOZ PVT E-20111 - TOM			MARCUZ, JACK		E-20111	0700-0700	DP 9
W/T PVT E-20046 - HURL					E-20046	0700-0700	DP 9
W/T PVT E-20050 - FIVE			BENNETT, ASA		E-20050	0700-0700	DP 9
W/T PVT E-20195 - CULP					E-20195	0700-0700	DP 9
W/T PVT E-20196 - BLACK					E-20196	0700-0700	DP 9
<b>GDR PVT E-20272 - DARRAH</b>					<b>E-20272</b>	<b>0700-1900</b>	<b>DP 9</b>
<b>FALM PVT O-20147 - BUNDY'S</b>					<b>O-20147</b>	<b>0700-1900</b>	<b>DP 9</b>
HEQB TBD						0700-0700	DP 9

**6. Work Assignments:**  
Construct control line as direct as possible.  
Plan Secondary control lines, begin if possible.  
Prepare for Firing Operations.

**7. Special Instructions:**  
DP9 located at Mill Creek Road and Emigrant Creek Road.

<b>8. Communications</b>								
Name	Ch	Function	Rx Freq	Rx Tone	Tx Freq	Tx Tone	Mode	Notes
NIFC C10	2	COMMAND	170.4125	(T3) 131.8	165.9625	(T3) 131.8	A	Quartz Lookout
CDF T15	P3.6	TACTICAL	151.1825	(T16) 192.8	151.1825	(T16) 192.8	A	
A/G TAC	14	A/G TAC	168.3750	0.0	168.3750	0.0	A	Overhead use only
CALCORD	15	TACTICAL	156.0750	(T6) 156.7	156.0750	(T6) 156.7	A	
AIRGUARD	16	A/G	168.6250	0.0	168.6250	(T1) 110.9	A	

<b>9. Prepared by: Name:</b>	M. Yeun/S. Frank(T)/T.Hullquist(T)	RESL	Signature:
<b>ICS 204</b>	Date/Time: 7/11/2024 2200	Personnel Count: 108	





# ASSIGNMENT LIST (ICS 204 WF)

CONTROLLED UNCLASSIFIED  
INFORMATION//BASIC

<b>1. Incident Name:</b> <b>SHELLY</b>	<b>2. Operational Period:</b> Date From: 07/12/24    Date To: 07/13/24 Time From: 0700    Time To: 0700	<b>3. Branch</b> <b>X</b>	<b>Division</b> <b>C</b>
<b>4. Operations Personnel:</b>		Page 1 of 3	Charlie

Operations Section Chief: <b>J. Owings/S. Lauderdale/J. Flores(T)</b>	Night Ops: <b>R. Szczepanek/K.Bohall</b>
Branch Director: <b>J. Walton (12), R. Wettstein (T)</b>	Branch Safety:
Division/Group Supervisor: <b>R. Valles</b>	Air Attack:

5. Resources Assigned:		** Resources Below in Bold are 12 Hour **						
Resource Identifier	ALS	LWD	Leader	Personnel	Request #	Hours	Reporting Location	
STC LNU 9143C			MILLOSOVICH, STEVE	18 +/-	E-20007	0700-0700	DP8	
STC SHU 9244C			KEOWN, JACOB	18 +/-	E-20055	0700-0700	DP8	
STC XSN 2391C	X		PIERCE, JEREMY	20	E-20185	0700-0700	DP8	
<b>ENG6 BNP E675</b>		<b>7/21</b>	<b>Roggenkam</b>	<b>4</b>	<b>E-64</b>	<b>0700-1900</b>	<b>DP8</b>	
STG SCU 9163G (FF, CMD)			HOFFMAN, ERIK	33 +/-	C-20005	0700-0700	DP8	
STG SHU 9245G (CNA)			RACKLEY, D	33 +/-	C-20004	0700-0700	DP8	
STG TGU 9258G (FF1)			ZUCKERMAN, ANDY	37	C-20000	0700-0700	DP8	
STG TBD						0700-0700	DP8	
STL LMU 9222L			NEEDLER, TRAVIS	7	E-20023	0700-0700	DP8	
STL TBD						0700-0700	DP8	
DOZ SKU 2640			REUSZE, MICHAEL		E-20235	0700-0700	DP8	
DOZ SKU 2643			HEAD, ERIC		E-20232	0700-0700	DP8	
DOZ PVT E-20029 BACK			Owen		E-20029	0700-0700	DP8	
DOZ PVT E-20030 WD			WELCH, RYAN	2	E-20030	0700-0700	DP8	
DOZ PVT E-20072 MATANDY			MELENDEZ, ANTONIO		E-20072	0700-0700	DP8	
DOZ PVT E-20075 EASLEY			EASLEY, KENNY	2	E-20075	0700-0700	DP8	
DOZ PVT E-20079 SPRAT			Spratt		E-20079	0700-0700	DP8	
DOZ PVT E-20081 INDEP			PACKWOOD, SCOTT		E-20081	0700-0700	DP8	
DOZ PVT E-20110 - ACT					E-20110	0700-0700	DP8	

**6. Work Assignments:**  
 Construct Direct Line.  
 Identify and construct primary control line.  
 Identify and construct Contingency Line.  
 Fall hazard trees and trees that threaten control lines.  
 Hold and improve control lines.

**7. Special Instructions:**  
 Only use water from metered hydrant in Fort Jones unless conducting direct suppression around residential areas.  
 DP8 located at Meyers Road and North Kidder Creek Road.

**8. Communications**

Name	Ch	Function	Rx Freq	Rx Tone	Tx Freq	Tx Tone	Mode	Notes
NIFC C10	2	COMMAND	170.4125	(T3) 131.8	165.9625	(T3) 131.8	A	Quartz Lookout
CDF T24	P3.7	TACTICAL	151.3325	(T16) 192.8	151.3325	(T16) 192.8	A	
AIRGUARD	16	A/G	168.6250	0.0	168.6250	(T1) 110.9	A	Emergency Use Only
CALCORD	15	TACTICAL	156.0750	(T6) 156.7	156.0750	(T6) 156.7	A	
AIRGUARD	16	A/G	168.6250	0.0	168.6250	(T1) 110.9	A	

**9. Prepared by: Name:** M. Yeun/S. Frank(T)/T.Hullquist(T)    RESL

Signature:

ICS 204	Date/Time: 7/11/2024 2200	Personnel Count: 174
---------	---------------------------	----------------------

# ASSIGNMENT LIST (ICS 204 WF)

CONTROLLED UNCLASSIFIED  
INFORMATION//BASIC

<b>1. Incident Name:</b>	<b>2. Operational Period:</b>	<b>3. Branch</b>	<b>Division</b>
<b>SHELLY</b>	Date From: 07/12/24    Date To: 07/13/24 Time From: 0700    Time To: 0700	<b>X</b>	<b>C</b>
<b>4. Operations Personnel:</b>		Page 2 of 3	Charlie

Operations Section Chief: <b>J. Owings/S. Lauderdale/J. Flores(T)</b>	Night Ops: <b>R. Szczepanek/K.Bohall</b>
Branch Director: <b>J. Walton (12), R. Wettstein (T)</b>	Branch Safety:
Division/Group Supervisor: <b>R. Valles</b>	Air Attack:

5. Resources Assigned:		** Resources Below in Bold are 12 Hour **					
Resource Identifier	ALS	LWD	Leader	Personnel	Request #	Hours	Reporting Location
WT PVT E-20010			ZUARBIER, JOHN		E-20010	0700-0700	DP8
W/T PVT E-20011 - BURKE			KELLY, KEN		E-20011	0700-0700	DP8
W/T PVT E-20012 - HD			HOWELL, DERRIN		E-20012	0700-0700	DP8
W/T PVT E-20043 - JOHN			Johnson		E-20043	0700-0700	DP8
W/T PVT E-20044 - QUART			Selvage		E-20044	0700-0700	DP8
W/T PVT E-20045 - HURL					E-20045	0700-0700	DP8
W/T PVT E-20248 - ALAN			NYBERG, TYLER	2	E-20248	0700-0700	DP8
W/T TBD						0700-0700	DP8
<b>MAST PVT E-20236 WRIGHT</b>			<b>WRIGHT, JEREMY</b>	1	<b>E-20236</b>	<b>0700-1900</b>	<b>DP8</b>
<b>MAST PVT E-20260 - EVANS</b>			<b>HUDMAN, JAMES</b>		<b>E-20260</b>	<b>0700-1900</b>	<b>DP8</b>
<b>FEL PVT E-20121 - ALL</b>			<b>COE, RYAN</b>		<b>E-20121</b>	<b>0700-1900</b>	<b>DP8</b>
FELB TBD						0700-0700	DP8
<b>GDR PVT E-20273 - OILERS</b>			<b>WHITE, JAMES</b>	1	<b>E-20273</b>	<b>0700-1900</b>	<b>DP8</b>
<b>GDR PVTE-20274 - OILERS</b>					<b>E-20274</b>	<b>0700-1900</b>	<b>DP8</b>
MAST TBD						0700-0700	DP8
SKD PVT E-20115 - ALL PHASE			PEPPLE, JUSTIN		E-20115	0700-0700	DP8

**6. Work Assignments:**  
 Construct Direct Line.  
 Identify and construct primary control line.  
 Identify and construct Contingency Line.  
 Fall hazard trees and trees that threaten control lines.  
 Hold and improve control lines.

**7. Special Instructions:**  
 Only use water from metered hydrant in Fort Jones unless conducting direct suppression around residential areas.  
 DP8 located at Meyers Road and North Kidder Creek Road.

**8. Communications**

Name	Ch	Function	Rx Freq	Rx Tone	Tx Freq	Tx Tone	Mode	Notes
NIFC C10	2	COMMAND	170.4125	(T3) 131.8	165.9625	(T3) 131.8	A	Quartz Lookout
CDF T24	P3.7	TACTICAL	151.3325	(T16) 192.8	151.3325	(T16) 192.8	A	
AIRGUARD	16	A/G	168.6250	0.0	168.6250	(T1) 110.9	A	Emergency Use Only
CALCORD	15	TACTICAL	156.0750	(T6) 156.7	156.0750	(T6) 156.7	A	
AIRGUARD	16	A/G	168.6250	0.0	168.6250	(T1) 110.9	A	

**9. Prepared by: Name:** M. Yeun/S. Frank(T)/T.Hullquist(T)    RESL

Signature:

<b>ICS 204</b>	Date/Time: 7/11/2024    2200	Personnel Count: 4
----------------	------------------------------	--------------------





# ASSIGNMENT LIST (ICS 204 WF)

CONTROLLED UNCLASSIFIED  
INFORMATION/BASIC

<b>1. Incident Name:</b> <b>SHELLY</b>	<b>2. Operational Period:</b> Date From: 07/12/24    Date To: 07/13/24 Time From: 0700    Time To: 0700	<b>3. Branch</b> <b>Division</b>  <b>X</b> <b>D</b>
---	---	---

**4. Operations Personnel:** Page 1 of 2    Delta

Operations Section Chief: <b>J. Owings/S. Lauderdale/J. Flores(T)</b>	Night Ops: <b>R. Szczepanek/K.Bohall</b>
Branch Director: <b>J. Walton (12), R. Wettstein (T)</b>	Branch Safety:
Division/Group Supervisor: <b>S. Chapman (9247C)</b>	Air Attack:

5. Resources Assigned:		** Resources Below in Bold are 12 Hour **					
Resource Identifier	ALS	LWD	Leader	Personnel	Request #	Hours	Reporting Location
STC LMU 9223C			URRUTIA, CASEY	18	E-20004	0700-0700	DP7
STC SHU 9247C			CHAPMAN, STEVEN	18	E-20051	0700-0700	DP7
STC SKU 9264C				18 +/-	E-20018	0700-0700	DP7
<b>STC 4807C</b>		<b>7/23</b>	<b>Scofield</b>	21	<b>E-258</b>	<b>0700-1900</b>	<b>DP7</b>
<b>STF 2861F</b>		<b>1/19</b>	<b>Lax</b>		<b>E-255</b>	<b>0700-1900</b>	<b>DP7</b>
STG TGU 9257G (FF1)			SMITH, ED	37	C-20008	0700-0700	DP7
STG SKU 9263G (CDCR)			HOFFMANN, JEFF	33 +/-	C-11	0700-0700	DP7
STG AEU 9271G (FF1)					E	0700-0700	DP7
STG TBD						0700-0700	DP7
DOZ PVT E-20059 BLACK			WILSON, THOMAS	2	E-20059	0700-0700	DP7
DOZ PVT E-20060 MCGOW			EPPERSON, JERRY		E-20060	0700-0700	DP7
DOZ PVT E-20065 MARIAH					E-20065	0700-0700	DP7
DOZ PVT E-20074 ERICK			Erickson		E-20074	0700-0700	DP7
DOZ PVT E-20078 ADAMS					E-20078	0700-0700	DP7
DOZ PVT E-20080 HIGH			HENSON, MIKE	2	E-20080	0700-0700	DP7

**6. Work Assignments:**  
 Construct control lines as direct as possible.  
 Hold and improve control lines.  
 Prepare structures for defensive actions.

**7. Special Instructions:**  
 Only use water from metered hydrant in Fort Jones unless conducting direct suppression around residential areas.  
 DP7 located at South Kidder Creek Road and HWY 3.

**8. Communications**

Name	Ch	Function	Rx Freq	Rx Tone	Tx Freq	Tx Tone	Mode	Notes
NIFC C10	2	COMMAND	170.4125	(T3) 131.8	165.9625	(T3) 131.8	A	Quartz Lookout
CDF T35	P3.8	TACTICAL	151.4675	(T17) 67.0	151.4675	(T17) 67.0	A	
A/G TAC	14	A/G TAC	168.3750	0.0	168.3750	0.0	A	Overhead use only
CALCORD	15	TACTICAL	156.0750	(T6) 156.7	156.0750	(T6) 156.7	A	
AIRGUARD	16	A/G	168.6250	0.0	168.6250	(T1) 110.9	A	

**9. Prepared by: Name:** M. Yeun/S. Frank(T)/T.Hullquist(T)    RESL    Signature:

**ICS 204**    Date/Time: 7/11/2024 2200    Personnel Count: 149

# ASSIGNMENT LIST (ICS 204 WF)

CONTROLLED UNCLASSIFIED  
INFORMATION/BASIC

<b>1. Incident Name:</b> <b>SHELLY</b>	<b>2. Operational Period:</b> Date From: 07/12/24    Date To: 07/13/24 Time From: 0700    Time To: 0700	<b>3. Branch</b> <b>Division</b> <b>X</b> <b>D</b>
<b>4. Operations Personnel:</b>		Page 2 of 2    Delta

Operations Section Chief: <b>J. Owings/S. Lauderdale/J. Flores(T)</b>	Night Ops: <b>R. Szczepanek/K.Bohall</b>
Branch Director: <b>J. Walton (12), R. Wettstein (T)</b>	Branch Safety:
Division/Group Supervisor: <b>S. Chapman (9247C)</b>	Air Attack:

5. Resources Assigned:		** Resources Below in Bold are 12 Hour **					
Resource Identifier	ALS	LWD	Leader	Personnel	Request #	Hours	Reporting Location
W/T PVT E-20088 - T & S					E-20088	0700-0700	DP7
W/T PVT E-20192 - CON			SCHEEPS, STEVEN	2	E-20192	0700-0700	DP7
W/T PVT E-20193			RICH		E-20193	0700-0700	DP7
W/T PVT E-20198 - LENA			SPURLOCK, HANK		E-20198	0700-0700	DP7
W/T PVT E-20200 - FIRE			TROEDEL, BRIAN		E-20200	0700-0700	DP7
W/T PVT E-20245 - STOREY			STORY, LANE	2	E-20245	0700-0700	DP7
<b>FALM PVT O-20223 - NORTH</b>				2	<b>O-20223</b>	<b>0700-1900</b>	<b>DP7</b>
HEQB TBD						0700-0700	DP7
<b>SOF2 BARNHART</b>		<b>7/22</b>	<b>Jeffrey Barnhart</b>	1	<b>O-284</b>	<b>0700-1900</b>	<b>DP7</b>
<b>EMPF HARTMAN</b>		<b>7/24</b>	<b>Hartman</b>	1	<b>O-20167</b>	<b>0700-1900</b>	<b>DP7</b>
<b>EMPF PHELPS</b>	<b>X</b>	<b>7/24</b>	<b>Phelps</b>	1	<b>O-20175</b>	<b>0700-1900</b>	<b>DP7</b>
<b>EMPF GARCIA</b>	<b>X</b>	<b>7/22</b>	<b>Garcia</b>	1	<b>O-195</b>	<b>0700-1900</b>	<b>DP7</b>

**6. Work Assignments:**  
 Construct control lines as direct as possible.  
 Hold and improve control lines.  
 Prepare structures for defensive actions.

**7. Special Instructions:**  
 Only use water from metered hydrant in Fort Jones unless conducting direct suppression around residential areas.  
 DP7 located at South Kidder Creek Road and HWY 3.

**8. Communications**

Name	Ch	Function	Rx Freq	Rx Tone	Tx Freq	Tx Tone	Mode	Notes
NIFC C10	2	COMMAND	170.4125	(T3) 131.8	165.9625	(T3) 131.8	A	Quartz Lookout
CDF T35	P3.8	TACTICAL	151.4675	(T17) 67.0	151.4675	(T17) 67.0	A	
A/G TAC	14	A/G TAC	168.3750	0.0	168.3750	0.0	A	Overhead use only
CALCORD	15	TACTICAL	156.0750	(T6) 156.7	156.0750	(T6) 156.7	A	
AIRGUARD	16	A/G	168.6250	0.0	168.6250	(T1) 110.9	A	

**9. Prepared by: Name:** M. Yeun/S. Frank(T)/T.Hullquist(T)    RESL

Signature:

ICS 204    Date/Time: 7/11/2024 2200    Personnel Count: 10

# ASSIGNMENT LIST (ICS 204 WF)

CONTROLLED UNCLASSIFIED  
INFORMATION//BASIC

<b>1. Incident Name:</b> <p style="text-align: center; font-weight: bold;">SHELLY</p>	<b>2. Operational Period:</b> Date From: 07/12/24    Date To: 07/13/24 Time From: 0700    Time To: 0700	<b>3. Branch</b> <b>Division</b> <p style="text-align: center; font-size: 24pt; font-weight: bold;">XX                      E</p>
<b>4. Operations Personnel:</b>		Page 1 of 2    Echo

Operations Section Chief: <b>J. Owings/S. Lauderdale/J. Flores(T)</b>	Night Ops: <b>R. Szczepanek/K.Bohall</b>
Branch Director: <b>T. Pederson, T. Richter (12)</b>	Branch Safety:
Division/Group Supervisor: <b>S. Pindell (12) /E. Mattson(T)</b>	Air Attack:

5. Resources Assigned:		** Resources Below in Bold are 12 Hour **						
Resource Identifier	ALS	LWD	Leader	Personnel	Request #	Hours	Reporting Location	
STC LNU 9141C			LEE, THOMAS	18 +/-	E-20006	0700-0700	DP6	
STC CZU 9170C			BONFANTE, DAN	21	E-20005	0700-0700	DP6	
T/F XSN 2392TF			PETERSEN, LARRY	20	E-20178	0700-0700	DP6	
<b>T/F XST 4202 (3,3,6,6,WT)</b>			<b>WILLIAMS, TRENT</b>	18	<b>E-20188</b>	<b>0700-1900</b>	<b>DP6</b>	
HC1 HIGH ROCK 1		7/18	Fluet	15	C-14	0700-0700	DP6	
HC1 HIGH ROCK 2		7/18	McElwain	15	C-15	0700-0700	DP6	
CRW2 TBD						0700-0700	DP6	
CRW2 TBD						0700-0700	DP6	
STL MEU 9118L			TAGLIO, KEN	7	E-20028	0700-0700	DP6	
STL TGU 9250L			WILBANKS, CLIFF	7	E-20008	0700-0700	DP6	
DOZ PVT E-20022 JOHNSON					E-20022	0700-0700	DP6	
DOZ PVT E-20031 DVBE			Tucker		E-20031	0700-0700	DP6	
DOZ PVT E-20032 MATANDY			Harkness		E-20032	0700-0700	DP6	
DOZ PVT E-20058 BLACK			WUNSCH, ALEX	2	E-20058	0700-0700	DP6	
DOZ PVT E-20073 SKINNERS			Skinner		E-20073	0700-0700	DP6	
W/T PVT E-20013 - AMERI			MARTINEZ, RUBEN	2	E-20013	0700-0700	DP6	
W/T PVT E-20109 - TRINITY			TAYLOR, JOSHUA	2	E-20109	0700-0700	DP6	
W/T PVT E-20201 - DIAMOND					E-20201	0700-0700	DP6	
W/T PVT E-20243 - H2O			CUSALICH, NATHAN	2	E-20243	0700-0700	DP6	

**6. Work Assignments:**  
 Contract direct line from Whisky Butte to Section 13.  
 Identify and construct primary control line from Whisky Butte south to Sawyers Bar.  
 Prepare to implement a firing plan.

**7. Special Instructions:**

8. Communications								
Name	Ch	Function	Rx Freq	Rx Tone	Tx Freq	Tx Tone	Mode	Notes
NIFC C11	3	COMMAND	170.6875	(T3) 131.8	166.5750	(T3) 131.8	A	Whiskey Butte
NIFC T1	5	TACTICAL	168.0500	(T3) 131.8	168.0500	(T3) 131.8	A	
CALCORD	15	TACTICAL	156.0750	(T6) 156.7	156.0750	(T6) 156.7	A	Medical Evac Tone 6
CALCORD	15	TACTICAL	156.0750	(T6) 156.7	156.0750	(T6) 156.7	A	
AIRGUARD	16	A/G	168.6250	0.0	168.6250	(T1) 110.9	A	

<b>9. Prepared by: Name:</b>	M. Yeun/S. Frank(T)/T.Hullquist(T)	RESL	Signature:
<b>ICS 204</b>	Date/Time: 7/11/2024	2200	Personnel Count: 127







# ASSIGNMENT LIST (ICS 204 WF)

CONTROLLED UNCLASSIFIED  
INFORMATION//BASIC

<b>1. Incident Name:</b> <p style="text-align: center; font-size: 1.2em;"><b>SHELLY</b></p>	<b>2. Operational Period:</b> Date From: 07/12/24      Date To: 07/13/24 Time From: 0700              Time To: 0700	<b>3. Branch</b> <b>Division</b> <p style="text-align: center; font-size: 1.2em;"><b>XX</b>                              <b>G</b></p>
--	---	--

**4. Operations Personnel:** Page 1 of 2      **Golf**

Operations Section Chief: <b>J. Owings/S. Lauderdale/J. Flores(T)</b> Branch Director: <b>T. Pederson, T. Richter (12)</b> Division/Group Supervisor: <b>A. Luna/R. Flitt(T)</b>	Night Ops: <b>R. Szczepanek/K.Bohall</b> Branch Safety: Air Attack:
--	---

5. Resources Assigned:	** Resources Below in Bold are 12 Hour **							
Resource Identifier	ALS	LWD	Leader	Personnel	Request #	Hours	Reporting Location	
HC2IA MODOC		7/17	<b>Hendricks</b>	19	<b>C-1</b>	<b>0700-1900</b>	<b>Whites Gulch</b>	
HC2IA HAPPY CAMP 2		7/21	<b>Goodwin</b>	20	<b>C-27</b>	<b>0700-1900</b>	<b>Whites Gulch</b>	
ENG3 DURANGO		7/23	<b>Kristiansen</b>	5	<b>E-118</b>	<b>0700-1900</b>	<b>Whites Gulch</b>	
ENG3 ALPINE 7		7/22	<b>Vigil</b>	3	<b>E-128</b>	<b>0700-1900</b>	<b>Whites Gulch</b>	
ENG3 ALPINE 8		7/22	<b>Nunez</b>	3	<b>E-129</b>	<b>0700-1900</b>	<b>Whites Gulch</b>	
ENG3 J3 CONTRACTING 5		7/23	<b>Tenaglia</b>	3	<b>E-132</b>	<b>0700-1900</b>	<b>Whites Gulch</b>	
ENG6 FIRE SOLUTIONS		7/22	<b>Mestrovic</b>	3	<b>E-94</b>	<b>0700-1900</b>	<b>Whites Gulch</b>	
ENG6 ROCKY POINT		7/22	<b>Soares</b>	3	<b>E-95</b>	<b>0700-1900</b>	<b>Whites Gulch</b>	
ENG6 BLUFFDALE E694		7/22	<b>Reglia</b>	3	<b>E-149</b>	<b>0700-1900</b>	<b>Whites Gulch</b>	
WTT2 SHF 266		7/22	<b>Eason</b>	2	<b>E-178</b>	<b>0700-1900</b>	<b>Whites Gulch</b>	
WTS2 KENT JOHNSON		7/21	<b>Brown</b>	1	<b>E-92</b>	<b>0700-1900</b>	<b>Whites Gulch</b>	
DOZ2 BAR-G 2		7/21	<b>Simonis</b>	1	<b>E-86</b>	<b>0700-1900</b>	<b>Whites Gulch</b>	
DOZ2 JIM JOHNSON		7/22	<b>Horne</b>	2	<b>E-214</b>	<b>0700-1900</b>	<b>Whites Gulch</b>	
HACKER CONSTRUCTION		7/24	<b>Wes Babel</b>	2	<b>E-290</b>	<b>0700-1900</b>	<b>Whites Gulch</b>	
MAST HILL		7/21	<b>Hill</b>	2	<b>E-58</b>	<b>0700-1900</b>	<b>Whites Gulch</b>	
MAST SMOKY MOUNTAIN		7/21	<b>Tomlins</b>	2	<b>E-59</b>	<b>0700-1900</b>	<b>Whites Gulch</b>	
HEQB GAILEY		7/22	<b>Gailey</b>	1	<b>O-228</b>	<b>0700-1900</b>	<b>Whites Gulch</b>	
HEQB(T) ROAM		7/22	<b>Roam</b>	1	<b>O-244</b>	<b>0700-1900</b>	<b>Whites Gulch</b>	

**6. Work Assignments:**  
Construct indirect control line from Sawyers Bar Rd north on Snoozer Ridge to the PCT to be utilized as a secondary control line.  
Identify potential indirect control lines to limit southern and fire progression.

**7. Special Instructions:**  
Backhaul trash and excess equipment to helibase daily.  
Identify potential drop points, landing zones, sling site and spike camp locations.  
24-hour resources contact Night Ops directly for direction after 1900.

**8. Communications**

Name	Ch	Function	Rx Freq	Rx Tone	Tx Freq	Tx Tone	Mode	Notes
NIFC C11	3	COMMAND	170.6875	(T3) 131.8	166.5750	(T3) 131.8	A	Whiskey Butte
NIFC T3	7	TACTICAL	168.6000	(T3) 131.8	168.6000	(T3) 131.8	A	
A/G TAC	14	A/G TAC	168.3750	0.0	168.3750	0.0	A	Overhead use only
CALCORD	15	TACTICAL	156.0750	(T6) 156.7	156.0750	(T6) 156.7	A	
AIRGUARD	16	A/G	168.6250	0.0	168.6250	(T1) 110.9	A	

**9. Prepared by: Name:** M. Yeun/S. Frank(T)/T.Hullquist(T)      RESL

Signature:

ICS 204      Date/Time: 7/11/2024 2200      Personnel Count: 76

# ASSIGNMENT LIST (ICS 204 WF)

CONTROLLED UNCLASSIFIED  
INFORMATION//BASIC

<b>1. Incident Name:</b> <p style="text-align: center; font-size: 1.2em;"><b>SHELLY</b></p>	<b>2. Operational Period:</b> Date From: 07/12/24      Date To: 07/13/24 Time From: 0700              Time To: 0700	<b>3. Branch</b> <b>Division</b>  <p style="text-align: center; font-size: 1.2em;"><b>XX</b>                      <b>G</b></p>
<b>4. Operations Personnel:</b>		Page 2 of 2 <b>Golf</b>

Operations Section Chief: <b>J. Owings/S. Lauderdale/J. Flores(T)</b> Branch Director: <b>T. Pederson, T. Richter (12)</b> Division/Group Supervisor: <b>A. Luna/R. Flitt(T)</b>	Night Ops: <b>R. Szczepanek/K.Bohall</b> Branch Safety: Air Attack:
--	---

5. Resources Assigned:	** Resources Below in Bold are 12 Hour **							
Resource Identifier	ALS	LWD	Leader	Personnel	Request #	Hours	Reporting Location	
FMOD AFT		7/19	<b>Smith</b>	2	<b>O-45</b>	0700-1900	<b>Whites Gulch</b>	
FMOD C&K WILDLAND 1		7/21	<b>Schuyler</b>	2	<b>O-155</b>	0700-1900	<b>Whites Gulch</b>	
FMOD C&K WILDLAND 2		7/21	<b>Pederson</b>	2	<b>O-156</b>	0700-1900	<b>Whites Gulch</b>	
FMOD WEST COAST CUTTING 2		7/20	<b>Agee</b>	2	<b>O-158</b>	0700-1900	<b>Whites Gulch</b>	
FMOD PACIFIC RIDGELINE		7/21	<b>Miller</b>	2	<b>O-161</b>	0700-1900	<b>Whites Gulch</b>	
FMOD NORTH ZONE FALLERS 1		7/21	<b>Hall</b>	2	<b>O-187</b>	0700-1900	<b>Whites Gulch</b>	
TFLD NESS JR		7/22	<b>Ness Jr</b>	1	<b>O-234</b>	0700-1900	<b>Whites Gulch</b>	
FELB SKUSTAD		7/21	<b>Skustad</b>	1	<b>O-47</b>	0700-1900	<b>Whites Gulch</b>	
SOFR CHUNG		7/21	<b>Chung</b>	1	<b>O-39</b>	0700-1900	<b>Whites Gulch</b>	
REMS 5	X		<b>Sepulveda</b>	4	<b>O-251</b>	0700-1900	<b>Whites Gulch</b>	
EMPF SIMPSON	X	7/21	<b>Simpson</b>	1	<b>O-90</b>	0700-1900	<b>Whites Gulch</b>	
EMTF MARTING		7/22	<b>Marting</b>	1	<b>O-89</b>	0700-1900	<b>Whites Gulch</b>	

**6. Work Assignments:**  
Construct indirect control line from Sawyers Bar Rd north on Snoozer Ridge to the PCT to be utilized as a secondary control line. Identify potential indirect control lines to limit southern and fire progression.

**7. Special Instructions:**  
Backhaul trash and excess equipment to helibase daily.  
Identify potential drop points, landing zones, sling site and spike camp locations.  
24-hour resources contact Night Ops directly for direction after 1900.

**8. Communications**

Name	Ch	Function	Rx Freq	Rx Tone	Tx Freq	Tx Tone	Mode	Notes
NIFC C11	3	COMMAND	170.6875	(T3) 131.8	166.5750	(T3) 131.8	A	Whiskey Butte
NIFC T3	7	TACTICAL	168.6000	(T3) 131.8	168.6000	(T3) 131.8	A	
A/G TAC	14	A/G TAC	168.3750	0.0	168.3750	0.0	A	Overhead use only
CALCORD	15	TACTICAL	156.0750	(T6) 156.7	156.0750	(T6) 156.7	A	
AIRGUARD	16	A/G	168.6250	0.0	168.6250	(T1) 110.9	A	

**9. Prepared by: Name:** M. Yeun/S. Frank(T)/T.Hullquist(T)      RESL      Signature:

**ICS 204**      Date/Time: 7/11/2024 2200      Personnel Count: 21

# ASSIGNMENT LIST (ICS 204 WF)

CONTROLLED UNCLASSIFIED  
INFORMATION//BASIC

<b>1. Incident Name:</b> <b>SHELLY</b>	<b>2. Operational Period:</b> Date From: 07/12/24    Date To: 07/13/24 Time From: 0700    Time To: 0700	<b>3. Branch</b> <b>Division</b> <b>XX</b> <b>T</b>
---	---	--


<b>4. Operations Personnel:</b>		Page 1 of 2 <b>Tango</b>
Operations Section Chief: <b>J. Owings/S. Lauderdale/J. Flores(T)</b> Branch Director: <b>T. Pederson, T. Richter (12)</b> Division/Group Supervisor: <b>R. Noxon/J. Bird(T)</b>	Night Ops: <b>R. Szczepanek/K.Bohall</b> Branch Safety: Air Attack:	

5. Resources Assigned:	** Resources Below in Bold are 12 Hour **							
Resource Identifier	ALS	LWD	Leader	Personnel	Request #	Hours	Reporting Location	
REDDING SMOKEJUMPERS		7/17	<b>Johnson</b>	8		0700-1900	<b>Whites Gulch</b>	
HC2IA FIRESTORM 5B		7/19	<b>Foster</b>	20	C-5	0700-1900	<b>Whites Gulch</b>	
HC2IA SANTA FE		7/18	<b>Simpson</b>	21	C-19	0700-1900	<b>Whites Gulch</b>	
HC2IA UKONOM		7/21	<b>Peters</b>	21	C-24	0700-1900	<b>Whites Gulch</b>	
HC2 TORRES CONTRACTING		7/24	<b>Lopez</b>	20	C-7	0700-1900	<b>Whites Gulch</b>	
HC2 NORTH PACIFIC		7/25	<b>Perez</b>	20	C-72	0700-1900	<b>Whites Gulch</b>	
ENG3 J3 CONTRACTING 1		7/20	<b>McAndrew</b>	3	E-112	0700-1900	<b>Whites Gulch</b>	
ENG3 SABINO		7/23	<b>Beeley</b>	3	E-114	0700-1900	<b>Whites Gulch</b>	
ENG3 KS JOX E81		7/23	<b>Neis</b>	3	E-121	0700-1900	<b>Whites Gulch</b>	
ENG6 BROCKWAY		7/23	<b>Colton</b>	3	E-155	0700-1900	<b>Whites Gulch</b>	
ENG6 AAA FORESTRY		7/24	<b>Martin</b>	3	E-157	0700-1900	<b>Whites Gulch</b>	
DOZ2 BAR-G 1		7/21	<b>Hummel</b>	2	E-85	0700-1900	<b>Whites Gulch</b>	
DOZ2 LET-ER-BUCK 2		7/24	<b>Cummings</b>	2	E-216	0700-1900	<b>Whites Gulch</b>	
MAST DAVIS CORPORATION		7/23	<b>Stafford</b>	2	E-292	0700-1900	<b>Whites Gulch</b>	
FELB DEWEY		7/24	<b>Dewey</b>	1	O-294	0700-1900	<b>Whites Gulch</b>	
HEQB PALACIOS		7/23	<b>Palacios</b>	1	O-230	0700-1900	<b>Whites Gulch</b>	
PACK ANDREWS			<b>Andrews</b>			0700-1900	<b>Whites Gulch</b>	
PACK SPRIK		7/24	<b>Sprik</b>	1	O-101	0700-1900	<b>Whites Gulch</b>	

**6. Work Assignments:**  
Identify potential indirect control lines to limit southern and western fire progression.

**7. Special Instructions:**  
Identify potential drop points, landing zones, sling site and spike camp locations.  
24-hour resources contact Night Ops directly for direction after 1900.

8. Communications								
Name	Ch	Function	Rx Freq	Rx Tone	Tx Freq	Tx Tone	Mode	Notes
NIFC C3	1	COMMAND	170.4250	(T3) 131.8	168.0750	(T3) 131.8	A	English Peak
NIFC T4	8	TACTICAL	166.7250	(T3) 131.8	166.7250	(T3) 131.8	A	
A/G TAC	14	A/G TAC	168.3750	0.0	168.3750	0.0	A	Overhead use only
CALCORD	15	TACTICAL	156.0750	(T6) 156.7	156.0750	(T6) 156.7	A	
AIRGUARD	16	A/G	168.6250	0.0	168.6250	(T1) 110.9	A	

**9. Prepared by: Name:** M. Yeun/S. Frank(T)/T.Hullquist(T)    RESL  
Signature:   
Date/Time: 7/11/2024 2200    Personnel Count: 134





# ASSIGNMENT LIST (ICS 204 WF)

CONTROLLED UNCLASSIFIED  
INFORMATION//BASIC

<b>1. Incident Name:</b> <p style="text-align: center; font-size: 1.2em;">SHELLY</p>	<b>2. Operational Period:</b> Date From: 07/12/24    Date To: 07/13/24 Time From: 0700    Time To: 0700	<b>3. Branch</b> <b>Division</b> <p style="text-align: center; font-size: 1.5em;">XX    Night</p>
<b>4. Operations Personnel:</b>		Page 1 of 1

Operations Section Chief: <b>J. Owings/S. Lauderdale/J. Flores(T)</b> Branch Director: <b>T. Pederson, T. Richter (12)</b> Division/Group Supervisor: <b>TBD</b>	Night Ops: <b>R. Szczepanek/K.Bohall</b> Branch Safety: Air Attack:
--	---

5. Resources Assigned:	** Resources Below in Bold are 12 Hour **							
Resource Identifier	ALS	LWD	Leader	Personnel	Request #	Hours	Reporting Location	
HC1 DIAMOND MOUNTAIN		7/18	<b>Dobyns</b>	20	<b>C-12</b>	1900-0700	<b>Etna ICP</b>	
ENG6 NORTH LAKE B16		7/22		3	<b>E-161</b>	1900-0700	Etna ICP	
ENG6 LCFA WILDLAND 741		7/23	<b>Dustin Brown</b>	3	<b>E-163</b>	0700-1900	Etna ICP	
WTS2 JOHN SEMPLE 2		7/21	<b>Horn</b>	1	<b>E-88</b>	1900-0700	Etna ICP	
WTS2 JOHN SEMPLE 3		7/21	<b>Goldie</b>	2	<b>E-89</b>	1900-0700	Etna ICP	
DOZ2 NORTHSTATE 1		7/21	<b>Poe</b>	2	<b>E-83</b>	1900-0700	Etna ICP	
DOZ2 DARRAH LOGGING 1		7/22	<b>Derra</b>	2	<b>E-221</b>	1900-0700	Etna ICP	
DOZ2 DARRAH LOGGING 2		7/22	<b>Waterman</b>	2	<b>E-222</b>	1900-0700	Etna ICP	
SOFR HABECK		7/22	<b>Habeck</b>	1	<b>O-212</b>	1900-0700	Etna ICP	
SOFR(T) AULD		7/22	<b>Auld</b>	1	<b>O-209</b>	1900-0700	Etna ICP	
REMS 7	X	7/23	<b>Kastelic</b>	4	<b>O-267</b>	0700-1900	Etna ICP	
EMTF MATLOCK		7/23	<b>Matlock</b>	1	<b>O-204</b>	1900-0700	Etna ICP	
EMPF HARDINA	X	7/23	<b>Hardina</b>	1	<b>O-253</b>	1900-0700	Etna ICP	
AMBO 2	X	7/21	<b>Jensen</b>	3	<b>E-209</b>	1900-0700	Etna ICP	

**6. Work Assignments:**  
Continue to construct direct and indirect control lines established by day shift to limit the fire progression.

**7. Special Instructions:**

**8. Communications**

Name	Ch	Function	Rx Freq	Rx Tone	Tx Freq	Tx Tone	Mode	Notes
***Use appropriate Command for Division assigned to***								
***Use appropriate Tactical for Division assigned to***								
A/G TAC	14	A/G TAC	168.3750	0.0	168.3750	0.0	A	Overhead use only
CALCORD	15	TACTICAL	156.0750	(T6) 156.7	156.0750	(T6) 156.7	A	
AIRGUARD	16	A/G	168.6250	0.0	168.6250	(T1) 110.9	A	

**9. Prepared by: Name:** M. Yeun/S. Frank(T)/T.Hullquist(T)    RESL

Signature:

ICS 204    Date/Time: 7/11/2024 2200    Personnel Count: 46



# ASSIGNMENT LIST (ICS 204 WF)

CONTROLLED UNCLASSIFIED  
INFORMATION/BASIC

<b>1. Incident Name:</b> <p style="text-align: center; font-size: 1.2em;"><b>SHELLY</b></p>	<b>2. Operational Period:</b> Date From: 07/12/24    Date To: 07/13/24 Time From: 0700    Time To: 0700	<b>3. Branch</b> <b>Division</b>  Contingency <b>North</b>
--	---	--

<b>4. Operations Personnel:</b>		Page 2 of 3
Operations Section Chief: <b>J. Owings/S. Lauderdale/J. Flores(T)</b> Branch Director: <b>L. Wright</b> Division/Group Supervisor: <b>S. Kovacs/J. Stitt(T)</b>	Night Ops: <b>R. Szczepanek/K.Bohall</b> Branch Safety: Air Attack:	

5. Resources Assigned:	** Resources Below in Bold are 12 Hour **							
Resource Identifier	ALS	LWD	Leader	Personnel	Request #	Hours	Reporting Location	
<b>WTS2 CATTLE LACK 1</b>		<b>7/22</b>	<b>Enlow</b>	1	<b>E-90</b>	<b>0700-1900</b>	<b>Etna ICP</b>	
<b>WTS2 CATTLE LACK 2</b>		<b>7/22</b>	<b>Shapp</b>	1	<b>E-91</b>	<b>0700-1900</b>	<b>Etna ICP</b>	
<b>DOZ2 DAVIS CONSTRUCTION</b>		<b>7/21</b>	<b>Deister</b>	2	<b>E-79</b>	<b>0700-1900</b>	<b>Etna ICP</b>	
<b>DOZ2 LET-ER-BUCK 1</b>		<b>7/21</b>	<b>Lassen</b>	1	<b>E-76</b>	<b>0700-1900</b>	<b>Etna ICP</b>	
<b>DOZ2 ABLE SERVICES</b>		<b>7/22</b>	<b>Gordon</b>	2	<b>E-77</b>	<b>0700-1900</b>	<b>Etna ICP</b>	
<b>CHP2 NORTH ZONE 1</b>		<b>7/21</b>	<b>Demery</b>	3	<b>E-56</b>	<b>0700-1900</b>	<b>Etna ICP</b>	
<b>CHP2 NORTH ZONE 2</b>		<b>7/21</b>	<b>Ingram</b>	3	<b>E-57</b>	<b>0700-1900</b>	<b>Etna ICP</b>	
<b>FMOD TOMS TIMBER</b>		<b>7/21</b>	<b>Josh</b>	2	<b>O-154</b>	<b>0700-1900</b>	<b>Etna ICP</b>	
<b>FMOD LONG GROUND</b>		<b>7/21</b>	<b>Bokish</b>	2	<b>O-160</b>	<b>0700-1900</b>	<b>Etna ICP</b>	
<b>FMOD GOD &amp; COUNTRY 1</b>		<b>7/21</b>	<b>Barny</b>	2	<b>O-162</b>	<b>0700-1900</b>	<b>Etna ICP</b>	
<b>FMOD GOD &amp; COUNTRY 2</b>		<b>7/21</b>	<b>Robbins</b>	2	<b>O-163</b>	<b>0700-1900</b>	<b>Etna ICP</b>	
<b>FMOD NORTH ZONE FALLERS</b>		<b>7/21</b>	<b>Bennett</b>	2	<b>O-188</b>	<b>0700-1900</b>	<b>Etna ICP</b>	
<b>TFLD PERRAULT</b>		<b>7/21</b>	<b>Perrault</b>	1	<b>O-165</b>	<b>0700-1900</b>	<b>Etna ICP</b>	
<b>TFLD DELSANTOS</b>		<b>7/22</b>	<b>Delsantos</b>	1	<b>O-232</b>	<b>0700-1900</b>	<b>Etna ICP</b>	
<b>TFLD LICHTER</b>		<b>7/22</b>	<b>Lichter</b>	1	<b>O-235</b>	<b>0700-1900</b>	<b>Etna ICP</b>	
<b>TFLD NEUMAN</b>		<b>7/22</b>	<b>Neuman</b>	1	<b>O-248</b>	<b>0700-1900</b>	<b>Etna ICP</b>	
<b>TFLD(T) DAWSON</b>		<b>7/21</b>	<b>Dawson</b>	1	<b>O-164</b>	<b>0700-1900</b>	<b>#REF!</b>	

**6. Work Assignments:**  
Identify and construct potential contingency lines to limit the fire progression.  
Improve Scott River Rd to limit northern fire progression.

**7. Special Instructions:**

8. Communications								
Name	Ch	Function	Rx Freq	Rx Tone	Tx Freq	Tx Tone	Mode	Notes
NIFC C10	2	COMMAND	170.4125	(T3) 131.8	165.9625	(T3) 131.8	A	Quartz Lookout
NIFC T5	9	TACTICAL	166.7750	(T3) 131.8	166.7750	(T3) 131.8	A	
A/G TAC	14	A/G TAC	168.3750	0.0	168.3750	0.0	A	Overhead use only
CALCORD	15	TACTICAL	156.0750	(T6) 156.7	156.0750	(T6) 156.7	A	
AIRGUARD	16	A/G	168.6250	0.0	168.6250	(T1) 110.9	A	

<b>9. Prepared by: Name:</b>	M. Yeun/S. Frank(T)/T.Hullquist(T)    RESL	Signature:
ICS 204	Date/Time: 7/11/2024 2200	Personnel Count: 28



# ASSIGNMENT LIST (ICS 204 WF)

CONTROLLED UNCLASSIFIED  
INFORMATION//BASIC

<b>1. Incident Name:</b> <p style="text-align: center; font-weight: bold;">SHELLY</p>	<b>2. Operational Period:</b> Date From: 07/12/24    Date To: 07/13/24 Time From: 0700    Time To: 0700	<b>3. Branch</b> <b>Division</b>  Contingency <b>North</b>
--	---	--

<b>4. Operations Personnel:</b>		<b>Page 3 of 3</b>
Operations Section Chief: <b>J. Owings/S. Lauderdale/J. Flores(T)</b> Branch Director: <b>L. Wright</b> Division/Group Supervisor: <b>S. Kovacs/J. Stitt(T)</b>	Night Ops: <b>R. Szczepanek/K.Bohall</b> Branch Safety: Air Attack:	

5. Resources Assigned:	** Resources Below in Bold are 12 Hour **							
Resource Identifier	ALS	LWD	Leader	Personnel	Request #	Hours	Reporting Location	
HEQB RABLIN		7/21	<b>Rablin</b>	1	<b>O-176</b>	0700-1900	<b>Etna ICP</b>	
HEQB STEVENS		7/21	<b>Stevens</b>	1	<b>O-226</b>	0700-1900	<b>Etna ICP</b>	
HEQB EDMONDSON		7/24	<b>Edmondson</b>	1	<b>O-229</b>	0700-1900	<b>Etna ICP</b>	
HEQB CORDELL		7/22	<b>Cordell</b>	1	<b>O-227</b>	0700-1900	<b>Etna ICP</b>	
FOBS BRICKEY		7/13	<b>Brickey</b>	1	<b>O-130</b>	0700-1900	<b>Etna ICP</b>	
FOBS MILLER		7/14	<b>Miller</b>	1	<b>O-131</b>	0700-1900	<b>Etna ICP</b>	
SOFC GRANT		7/13	<b>Grant</b>	1	<b>O-5</b>	0700-1900	<b>Etna ICP</b>	
SOFR NORTH		7/22	<b>North</b>	1	<b>O-213</b>	0700-1900	<b>Etna ICP</b>	
SOFR(T) GRAY		7/17	<b>Gray</b>	1	<b>O-7.6</b>	0700-1900	<b>Etna ICP</b>	
EMPF CORRAL	X	7/22	<b>Corral</b>	1	<b>O-197</b>	0700-1900	<b>Etna ICP</b>	
EMPF DE JONG	X	7/22	<b>DeJong</b>	1	<b>O-198</b>	0700-1900	<b>Etna ICP</b>	
EMPF(T) BROWN	X	7/23	<b>Brown</b>	1	<b>O-314</b>	0700-1900	<b>Etna ICP</b>	
EMTF CARROL		7/19	<b>Carrol</b>	1	<b>O-52</b>	0700-1900	<b>Etna ICP</b>	
EMTF HARDIN		7/23	<b>Hardin</b>	1	<b>O-271</b>	0700-1900	<b>Etna ICP</b>	
AMBO 3	X	7/22	<b>Gurtaray</b>	3	<b>E-228</b>	0700-1900	<b>Etna ICP</b>	

**6. Work Assignments:**  
Identify and construct potential contingency lines to limit the fire progression.  
Improve Scott River Rd to limit northern fire progression.

**7. Special Instructions:**

8. Communications								
Name	Ch	Function	Rx Freq	Rx Tone	Tx Freq	Tx Tone	Mode	Notes
NIFC C10	2	COMMAND	170.4125	(T3) 131.8	165.9625	(T3) 131.8	A	Quartz Lookout
NIFC T5	9	TACTICAL	166.7750	(T3) 131.8	166.7750	(T3) 131.8	A	
A/G TAC	14	A/G TAC	168.3750	0.0	168.3750	0.0	A	Overhead use only
CALCORD	15	TACTICAL	156.0750	(T6) 156.7	156.0750	(T6) 156.7	A	
AIRGUARD	16	A/G	168.6250	0.0	168.6250	(T1) 110.9	A	

<b>9. Prepared by: Name:</b>	M. Yeun/S. Frank(T)/T.Hullquist(T)	RESL	Signature:
<b>ICS 204</b>	Date/Time: 7/11/2024 2200	Personnel Count: 17	

# ASSIGNMENT LIST (ICS 204 WF)

CONTROLLED UNCLASSIFIED  
INFORMATION/BASIC

<b>1. Incident Name:</b> <p style="text-align: center; font-weight: bold;">SHELLY</p>	<b>2. Operational Period:</b> Date From: 07/12/24    Date To: 07/13/24 Time From: 0700    Time To: 0700	<b>3. Branch</b> <b>Division</b>  Contingency <b>South</b>
--	---	--

**4. Operations Personnel:** Page 1 of 3

Operations Section Chief: <b>J. Owings/S. Lauderdale/J. Flores(T)</b>	Night Ops: <b>R. Szczepanek/K.Bohall</b>
Branch Director: <b>L. Wright</b>	Branch Safety:
Division/Group Supervisor: <b>R. DeCamp</b>	Air Attack:

5. Resources Assigned:	** Resources Below in Bold are 12 Hour **						Hours	Reporting Location
Resource Identifier	ALS	LWD	Leader	Personnel	Request #			
HC1 TRINITY IHC		7/21	<b>Dias</b>	22	<b>C-25</b>	<b>0700-1900</b>	<b>Etna ICP</b>	
HC2IA BLACK MESA	X	7/17	<b>Ellis</b>	23	<b>C-16</b>	<b>0700-1900</b>	<b>Etna ICP</b>	
HC2IA GRAYBACK FORESTRY		7/21	<b>Rhinehart</b>	20	<b>C-29</b>	<b>0700-1900</b>	<b>Etna ICP</b>	
HC2IA NORTH IDAHO		7/22	<b>Kearn</b>	20	<b>C-48</b>	<b>0700-1900</b>	<b>Etna ICP</b>	
ENG3 J3 CONTRACTING 2		7/23	<b>Wallace</b>	3	<b>E-113</b>	<b>0700-1900</b>	<b>Etna ICP</b>	
ENG3 J3 CONTRACTING 3		7/23	<b>Bariel</b>	3	<b>E-115</b>	<b>0700-1900</b>	<b>Etna ICP</b>	
ENG3 WILDFIRE RESOURCES		7/23	<b>Fowler</b>	3	<b>E-124</b>	<b>0700-1900</b>	<b>Etna ICP</b>	
ENG3 THOMAS HAYNES		7/21	<b>McCrea</b>	3	<b>E-125</b>	<b>0700-1900</b>	<b>Etna ICP</b>	
ENG3 ROCKY MOUNTAIN FIRE		7/23	<b>Stanford</b>	3	<b>E-126</b>	<b>0700-1900</b>	<b>Etna ICP</b>	
ENG3 OUTBACK 1		7/22	<b>Terry</b>	3	<b>E-130</b>	<b>0700-1900</b>	<b>Etna ICP</b>	
ENG3 OUTBACK 2		7/22	<b>Beal</b>	3	<b>E-131</b>	<b>0700-1900</b>	<b>Etna ICP</b>	
ENG3 J3 CONTRACTING 8		7/23	<b>Klotz</b>	3	<b>E-135</b>	<b>0700-1900</b>	<b>Etna ICP</b>	
ENG3 J3 CONTRACTING 9		7/23	<b>Desrosier</b>	3	<b>E-136</b>	<b>0700-1900</b>	<b>Etna ICP</b>	
ENG6 ROARING FORK		7/15	<b>Blangsted</b>	4	<b>E-148</b>	<b>0700-1900</b>	<b>Etna ICP</b>	
ENG6 MES 6217		7/13	<b>Bennett</b>	4	<b>E-150</b>	<b>0700-1900</b>	<b>Etna ICP</b>	
ENG6 BLACK HAWK		7/22	<b>Jansen</b>	1	<b>E-152</b>	<b>0700-1900</b>	<b>Etna ICP</b>	
ENG6 NATIONAL FIRE		7/23	<b>Arenas</b>	3	<b>E-153</b>	<b>0700-1900</b>	<b>Etna ICP</b>	
ENG6 WOODPECKER		7/22	<b>Imel</b>	3	<b>E-164</b>	<b>0700-1900</b>	<b>Etna ICP</b>	
WTS2 WHITE		7/21	<b>White</b>	1	<b>E-48</b>	<b>0700-1900</b>	<b>Etna ICP</b>	

**6. Work Assignments:**  
 Identify and construct potential contingency lines to limit the fire progression.  
 Improve Sawyers Bar Rd from E/F break to the south to limit southern and eastern fire progression.  
 Improve the roads into the Ruffy Gap area to limit road breakdown and maintain usable surfaces.

**7. Special Instructions:**  
 Identify and establish water sources.  
 Do not use hydrants as water sources unless conducting direct suppression around residential area.

**8. Communications**

Name	Ch	Function	Rx Freq	Rx Tone	Tx Freq	Tx Tone	Mode	Notes
NIFC C3	1	COMMAND	170.4250	(T3) 131.8	168.0750	(T3) 131.8	A	English Peak
NIFC T6	10	TACTICAL	168.2500	(T3) 131.8	168.2500	(T3) 131.8	A	
A/G TAC	14	A/G TAC	168.3750	0.0	168.3750	0.0	A	Overhead use only
CALCORD	15	TACTICAL	156.0750	(T6) 156.7	156.0750	(T6) 156.7	A	
AIRGUARD	16	A/G	168.6250	0.0	168.6250	(T1) 110.9	A	

**9. Prepared by: Name:** M. Yeun/S. Frank(T)/T.Hullquist(T)    RESL  
Signature:   
**ICS 204**    Date/Time: 7/11/2024 2200    Personnel Count: 127

# ASSIGNMENT LIST (ICS 204 WF)

CONTROLLED UNCLASSIFIED  
INFORMATION/BASIC

<b>1. Incident Name:</b> <b>SHELLY</b>	<b>2. Operational Period:</b> Date From: 07/12/24    Date To: 07/13/24 Time From: 0700    Time To: 0700	<b>3. Branch</b> <b>Division</b>  Contingency <b>South</b>
<b>4. Operations Personnel:</b>		Page 2 of 3

Operations Section Chief: <b>J. Owings/S. Lauderdale/J. Flores(T)</b>	Night Ops: <b>R. Szczepanek/K.Bohall</b>
Branch Director: <b>L. Wright</b>	Branch Safety:
Division/Group Supervisor: <b>R. DeCamp</b>	Air Attack:

5. Resources Assigned:	** Resources Below in Bold are 12 Hour **						
Resource Identifier	ALS	LWD	Leader	Personnel	Request #	Hours	Reporting Location
<b>WTS2 MATT JOHNSON</b>		<b>7/20</b>	<b>Nichols</b>	1	<b>E-49</b>	<b>0700-1900</b>	<b>Etna ICP</b>
<b>WTS2 OVERWATCH</b>		<b>7/20</b>	<b>Krauthaim</b>	2	<b>E-50</b>	<b>0700-1900</b>	<b>Etna ICP</b>
<b>DOZ2 KNF 1</b>		<b>7/16</b>	<b>Grotting</b>	4	<b>E-1</b>	<b>0700-1900</b>	<b>Etna ICP</b>
<b>DOZ2 JOHNSON</b>		<b>7/21</b>	<b>Maxwell</b>	2	<b>E-78</b>	<b>0700-1900</b>	<b>Etna ICP</b>
<b>DOZ2 JUNGWIRTH 1</b>		<b>7/21</b>	<b>Weese</b>	2	<b>E-80</b>	<b>0700-1900</b>	<b>Etna ICP</b>
<b>DOZ2 EVANS BROTHERS</b>		<b>7/21</b>	<b>Evans</b>	2	<b>E-87</b>	<b>0700-1900</b>	<b>Etna ICP</b>
<b>DOZ2 NORTHSTATE 2</b>		<b>7/23</b>	<b>Metz</b>	1	<b>E-213</b>	<b>0700-1900</b>	<b>Etna ICP</b>
<b>DOZ2 TYSON MORGAN</b>		<b>7/23</b>	<b>Ebejeoje</b>	2	<b>E-215</b>	<b>0700-1900</b>	<b>Etna ICP</b>
<b>DOZ2 PACIFIC RIDGELINE</b>		<b>7/23</b>	<b>Britt</b>	2	<b>E-218</b>	<b>0700-1900</b>	<b>Etna ICP</b>
<b>DOZ2 JUNGWIRTH 2</b>		<b>7/22</b>	<b>Hill</b>	2	<b>E-220</b>	<b>0700-1900</b>	<b>Etna ICP</b>
<b>MAST JIM JOHNSON</b>		<b>7/24</b>	<b>Downing</b>	3	<b>E-289</b>	<b>0700-1900</b>	<b>Etna ICP</b>
<b>MAST JUNGWIRTH</b>		<b>7/24</b>	<b>Jungwirth</b>	1	<b>E-291</b>	<b>0700-1900</b>	<b>Etna ICP</b>
<b>FMOD AXE CONTRACTING</b>		<b>7/21</b>	<b>Goodwin</b>	2	<b>O-185</b>	<b>0700-1900</b>	<b>Etna ICP</b>
<b>TFLD SCHUSTER</b>		<b>7/21</b>	<b>Schuster</b>	1	<b>O-48</b>	<b>0700-1900</b>	<b>Etna ICP</b>
<b>TFLD COOK</b>		<b>7/22</b>	<b>Cook</b>	1	<b>O-51</b>	<b>0700-1900</b>	<b>Etna ICP</b>
<b>HEQB CRUM</b>		<b>7/14</b>	<b>Crum</b>	1	<b>O-175</b>	<b>0700-1900</b>	<b>Etna ICP</b>
<b>HEQB CASTILLO</b>		<b>7/22</b>	<b>Castillo</b>	1	<b>O-296</b>	<b>0700-1900</b>	<b>Etna ICP</b>
<b>HEQB WILSON</b>		<b>7/22</b>	<b>Wilson</b>		<b>O-297</b>	<b>0700-1900</b>	<b>Etna ICP</b>
<b>HEQB TIDWELL</b>			<b>Tidwell</b>	1	<b>O-298</b>	<b>0700-1900</b>	<b>Etna ICP</b>

**6. Work Assignments:**  
 Identify and construct potential contingency lines to limit the fire progression.  
 Improve Sawyers Bar Rd from E/F break to the south to limit southern and eastern fire progression.  
 Improve the roads into the Ruffy Gap area to limit road breakdown and maintain usable surfaces.

**7. Special Instructions:**  
 Identify and establish water sources.  
 Do not use hydrants as water sources unless conducting direct suppression around residential area.

8. Communications								
Name	Ch	Function	Rx Freq	Rx Tone	Tx Freq	Tx Tone	Mode	Notes
NIFC C3	1	COMMAND	170.4250	(T3) 131.8	168.0750	(T3) 131.8	A	English Peak
NIFC T6	10	TACTICAL	168.2500	(T3) 131.8	168.2500	(T3) 131.8	A	
A/G TAC	14	A/G TAC	168.3750	0.0	168.3750	0.0	A	Overhead use only
CALCORD	15	TACTICAL	156.0750	(T6) 156.7	156.0750	(T6) 156.7	A	
AIRGUARD	16	A/G	168.6250	0.0	168.6250	(T1) 110.9	A	

<b>9. Prepared by: Name:</b>	M. Yeun/S. Frank(T)/T.Hullquist(T)	RESL	Signature:
ICS 204	Date/Time: 7/11/2024	2200	Personnel Count: 30





# ASSIGNMENT LIST (ICS 204 WF)

CONTROLLED UNCLASSIFIED  
INFORMATION//BASIC

<b>1. Incident Name:</b> <b>SHELLY</b>	<b>2. Operational Period:</b> Date From: 07/12/24    Date To: 07/13/24 Time From: 0700    Time To: 0700	<b>3. Branch</b> <b>Division</b>  <b>Contingency</b> <b>East</b>
---	---	--


<b>4. Operations Personnel:</b>		Page 1 of 1
Operations Section Chief: <b>J. Owings/S. Lauderdale/J. Flores(T)</b> Branch Director: <b>L. Wright</b> Division/Group Supervisor: <b>M. Milojevich(12)/S. Clement(12)(T)</b>	Night Ops: <b>R. Szczepanek/K.Bohall</b> Branch Safety: Air Attack:	

<b>5. Resources Assigned:</b>		<b>** Resources Below in Bold are 12 Hour **</b>					
Resource Identifier	ALS	LWD	Leader	Personnel	Request #	Hours	Reporting Location
<b>STF OES 1807F</b>		<b>7/23</b>	<b>Cory Fackiner</b>	17	<b>E-252</b>	<b>0700-1900</b>	<b>DP7</b>
CRW2 TBD						0700-0700	DP7
CRW2 TBD						0700-0700	DP7
DOZ PVT E-20061 LENA			CARLTON, ROD		E-20061	0700-0700	DP7
DOZ PVT E-20062 LENA			MONTZ, JOHN	2	E-20062	0700-0700	DP7
W/T PVT E-20246 - Foothill			KELLY, TOM		E-20246	0700-0700	DP7
<b>CHIP PVT E-20294 - SISK</b>			<b>LANGE, DENNIS</b>	2	<b>E-20294</b>	<b>0700-1900</b>	<b>DP7</b>
<b>CHIP PVT E-20295 - BROWN</b>			<b>HAPTONSTALL, CHUCK</b>	2	<b>E-20295</b>	<b>0700-1900</b>	<b>DP7</b>
<b>CHIP PVT E-20296 - BUNDY</b>					<b>E-20296</b>	<b>0700-1900</b>	<b>DP7</b>
<b>CHIP PVT E-20297 - WELL</b>			<b>ADKINS, RONALD</b>	2	<b>E-20297</b>	<b>0700-1900</b>	<b>DP7</b>
<b>FEL PVT E-20118 - JW</b>			<b>MORRISON, MATT</b>		<b>E-20118</b>	<b>0700-1900</b>	<b>DP7</b>
<b>FEL PVT E-20119 - JW</b>			<b>MORRISON, MATT</b>		<b>E-20119</b>	<b>0700-1900</b>	<b>DP7</b>
<b>FEL PVT E-20120 - RAY</b>			<b>RAYGOZA, AUSIN</b>	1	<b>E-20120</b>	<b>0700-1900</b>	<b>DP7</b>
SKD PVT E-20112 - LASS			LASSEN, STEVE		E-20112	0700-0700	DP7
SKD PVT E-20114 - BUSH			BUSHY, ANDREW	1	E-20114	0700-0700	DP7
SKD PVT E-20116 - RIDGE LOG			DIAZ, DAVY		E-20116	0700-0700	DP7
SKD PVT E-20117 - RIDGE LOG			SLACK, JAMES		E-20117	0700-0700	DP7
SKD PVT E-20206 - JW			ARMSTRONG, OLIVIA	2	E-20206	0700-0700	DP7
<b>HEQB TURNER</b>			<b>TURNER, CAMERON</b>	1	<b>O-20141</b>	<b>0700-1900</b>	<b>DP7</b>

**6. Work Assignments:**  
Identify and construct contingency line.

**7. Special Instructions:**  
DP7 located at South Kidder Creek Road and HWY 3.

<b>8. Communications</b>								
Name	Ch	Function	Rx Freq	Rx Tone	Tx Freq	Tx Tone	Mode	Notes
NIFC C11	3	COMMAND	170.6875	(T3) 131.8	166.5750	(T3) 131.8	A	Whiskey Butte
VTAC 12	11	TACTICAL	154.4525	(T6) 156.7	154.4525	(T6) 156.7	A	
A/G TAC	14	A/G TAC	168.3750	0.0	168.3750	0.0	A	Overhead use only
CALCORD	15	TACTICAL	156.0750	(T6) 156.7	156.0750	(T6) 156.7	A	
AIRGUARD	16	A/G	168.6250	0.0	168.6250	(T1) 110.9	A	

**9. Prepared by: Name:** M. Yeun/S. Frank(T)/T.Hullquist(T)    RESL  
Signature: 

**ICS 204**    Date/Time: 7/11/2024 2200    Personnel Count: 29





# ASSIGNMENT LIST (ICS 204 WF)

CONTROLLED UNCLASSIFIED  
INFORMATION//BASIC

<b>1. Incident Name:</b> <p style="text-align: center; font-size: 1.2em;"><b>SHELLY</b></p>	<b>2. Operational Period:</b> Date From: 07/12/24    Date To: 07/13/24 Time From: 0700    Time To: 0700	<b>3. Branch</b> <b>Division</b>  <b>Structure</b> <b>Greenview</b>
--	---	---

<b>4. Operations Personnel:</b>		Page 1 of 1
Operations Section Chief: <b>J. Owings/S. Lauderdale/J. Flores(T)</b>	Night Ops: <b>R. Szczepanek/K.Bohall</b>	
Branch Director: <b>J. Howard (12)</b>	Branch Safety:	
Division/Group Supervisor: <b>C. Reginatto (12)</b>	Air Attack:	

5. Resources Assigned:	** Resources Below in Bold are 12 Hour **						
Resource Identifier	ALS	LWD	Leader	Personnel	Request #	Hours	Reporting Location
<b>S/T ENG1 OES 2804A</b>		<b>7/22</b>	<b>Moss</b>		<b>E-249</b>	<b>0700-1900</b>	<b>DP7</b>
<b>STA OES 2806A</b>			<b>ABELSON, JOEL</b>	20	<b>E-20174</b>	<b>0700-1900</b>	<b>DP7</b>
<b>STA XLC 1202A</b>			<b>Nausha</b>	22	<b>E-251</b>	<b>0700-1900</b>	<b>DP7</b>
<b>STA OES 6840A</b>	<b>X</b>		<b>MORA, SERGIO</b>	22	<b>E-20181</b>	<b>0700-1900</b>	<b>DP7</b>
<b>STB OES 5802B</b>			<b>Coughran</b>	19	<b>E-254</b>	<b>0700-1900</b>	<b>DP7</b>
<b>STC XED 4075C</b>			<b>HALL, DUSTIN</b>	20	<b>E-20053</b>	<b>0700-1900</b>	<b>DP7</b>
STC TBD						0700-0700	DP7
<b>T/F OES TF 2803</b>		<b>7/23</b>	<b>Schindler</b>		<b>E-256</b>	<b>0700-1900</b>	<b>DP7</b>
STG TBD						0700-0700	DP7
STG TBD						0700-0700	DP7
DOZ PVT E-20056 PRO			NORTON, TRACEY		E-20056	0700-0700	DP7
DOZ PVT E-20057 PRO			NORTON, TRACEY		E-20057	0700-0700	DP7
DOZ PVT E-20064 TREACH			KLAUER, CONNER	2	E-20064	0700-0700	DP7
W/T PVT E-20048 - DOUBLE			GRASSMAN, LEAH		E-20048	0700-0700	DP7
W/T PVT E-20199 - LENA			MONG, BRIAN		E-20199	0700-0700	DP7
W/T PVT E-20240 - AMERICA			REALI, VINCENT	2	E-20240	0700-0700	DP7
W/T PVT E-20242 - AMERICA			REALI, VINCENT	2	E-20242	0700-0700	DP7
HEQB TBD						0700-0700	DP7

**6. Work Assignments:**  
Develop and prepare to implement structure defense plan.

**7. Special Instructions:**  
DP7 located at South Kidder Creek Road and HWY 3.

**8. Communications**

Name	Ch	Function	Rx Freq	Rx Tone	Tx Freq	Tx Tone	Mode	Notes
NIFC C10	2	COMMAND	170.4125	(T3) 131.8	165.9625	(T3) 131.8	A	Quartz Lookout
VFIRE 25	P3.11	TACTICAL	154.2875	(T6) 156.7	154.2875	(T6) 156.7	A	
A/G TAC	14	A/G TAC	168.3750	0.0	168.3750	0.0	A	Overhead use only
CALCORD	15	TACTICAL	156.0750	(T6) 156.7	156.0750	(T6) 156.7	A	
AIRGUARD	16	A/G	168.6250	0.0	168.6250	(T1) 110.9	A	

**9. Prepared by: Name:** M. Yeun/S. Frank(T)/T.Hullquist(T)    RESL

Signature:

<b>ICS 204</b>	Date/Time: 7/11/2024    2200	Personnel Count: 109
----------------	------------------------------	----------------------





# ICS 205 - INCIDENT RADIO COMMUNICATIONS PLAN

<b>1. Incident Name:</b> Shelly IA Page 2	<b>2. Date/Time Prepared</b> Date: 07/11/2024 Time: 1930	<b>3. Operational Period:</b> Date From: 07/12/24 Time From: 0700 Date To: 07/13/24 Time To: 0700
---	--	---

4. Communications									
Ch#	Function	Name	Assigned To	Rx Freq	Rx Tone	Tx Freq	Tx Tone	Mode	Notes
1	DISPATCH	FS KNF	Dispatch	171.5250	0.0	165.4125	OST	A	Dispatch
2	COMMAND	KNF Salmon	IA COMMAND	172.4000		164.1250	OST	A	
3	COMMAND	KNF River	IA COMMAND	172.2500		165.0750	OST	A	
4	TACTICAL	R5 T4	IA TACTICAL	166.5500	0.0	166.5500	0.0	A	
5	A/G	AG-43	IA AG	167.6000	0.0	167.6000	0.0	A	
6	DISPATCH	SKU L	IA COMMAND	151.3250	(T6) 156.7	159.3600	OST	A	
7	TACTICAL	CDF T9	IA TACTICAL	151.3850	(T16) 192.8	151.3850	(T16) 192.8	A	
8	TACTICAL	CDF T10	IA TACTICAL	151.4000	(T16) 192.8	151.4000	(T16) 192.8	A	
9	A/G	CDF A/G1	IA AG	151.2200	(T16) 192.8	151.2200	(T16) 192.8	A	
10									
11									
12									
13									
14	A/G TAC	A/G TAC	ALL DIVS	168.3750	0.0	168.3750	0.0	A	
15	TACTICAL	CALCORD	ALL DIVS	156.0750	(T6) 156.7	156.0750	(T6) 156.7	A	
16	A/G	AIRGUARD	EMERGENCY	168.6250	0.0	168.6250	(T1) 110.9	A	
17									
18									
19	TACTICAL	CALCORD	MEDICAL	156.0750	(T6) 156.7	156.0750	(T6) 156.7	A	Medical Evac Tone 6
20	A/G	AIRGUARD	Emergency	168.6250	0.0	168.6250	(T1) 110.9	A	Emergency Use Only

**5. Special Instructions**


<b>6. Prepared by (Communications Unit Leader): Name: C.Perry</b>	Signature:
NIMS IAP	Date/Time: 07/11/24 1930

# ICS 205 - INCIDENT RADIO COMMUNICATIONS PLAN

**1. Incident Name:** Shelly Branch X / Structure Group  
**2. Date/Time Prepared:** Date: 07/11/2024 Time: 1930  
**3. Operational Period:** Date From: 07/12/24 Date To: 07/13/24  
 Time From: 0700 Time To: 0700

4. Communications										
Ch#	Function	Name	Assigned To	Rx Freq	Rx Tone	Tx Freq	Tx Tone	Mode	Notes	
1	COMMAND	NIFC C3	ALL DIVS	170.4250	(T3) 131.8	168.0750	(T3) 131.8	A	English Peak	
2	COMMAND	NIFC C10	ALL DIVS	170.4125	(T3) 131.8	165.9625	(T3) 131.8	A	Quartz Lookout	
3	COMMAND	NIFC C11	ALL DIVS	170.6875	(T3) 131.8	166.5750	(T3) 131.8	A	Whiskey Butte	
4	COMMAND	NIFC C12	ALL DIVS	173.0375	(T3) 131.8	167.3250	(T3) 131.8	A	Helispot 5	
5	TACTICAL	CDF T14	DIV A	159.3075	(T16) 192.8	159.3075	(T16) 192.8	A		
6	TACTICAL	CDF T15	DIV B	151.1825	(T16) 192.8	151.1825	(T16) 192.8	A		
7	TACTICAL	CDF T24	DIV C	151.3325	(T16) 192.8	151.3325	(T16) 192.8	A		
8	TACTICAL	CDF T35	DIV D	151.4675	(T17) 67.0	151.4675	(T17) 67.0	A		
9	TACTICAL	CDF T36	ETNA	159.3225	(T17) 67.0	159.3225	(T17) 67.0	A		
10	TACTICAL	CDF T37	QUARTZ	151.1525	(T17) 67.0	151.1525	(T17) 67.0	A		
11	TACTICAL	VFIRE 25	GREENVIEW	154.2875	(T6) 156.7	154.2875	(T6) 156.7	A		
12	TACTICAL	VFIRE 26	UNASSIGNED	154.3025	(T6) 156.7	154.3025	(T6) 156.7	A		
13	A/G CMD	A/G CMD	ALL DIVS	166.6000	0.0	166.6000	0.0	A	Overhead Use Only	
14	A/G TAC	A/G TAC	ALL DIVS	168.3750	0.0	168.3750	0.0	A		
15	TACTICAL	CALCORD	ALL DIVS	156.0750	(T6) 156.7	156.0750	(T6) 156.7	A	Medical Evac Tone 6	
16	A/G	AIRGUARD	EMERGENCY	168.6250	0.0	168.6250	(T1) 110.9	A	Emergency Use Only	
17										
18										
19										
20	A/G	AIRGUARD	EMERGENCY	168.6250	0.0	168.6250	(T1) 110.9	A	Emergency Use Only	

**5. Special Instructions**

**6. Prepared by (Communications Unit Leader):** Name: C.Perry  
 Signature:   
 Date/Time: 07/11/24 1930  
 NIMS IAP

## AIR OPERATIONS SUMMARY ICS-220

Incident Name / Number SHELLY	Sunrise 0541	Sunset 2048	Airport A30	Pumpkin 2030
Time Prepared 1700 Shutdown 2030				
Date Prepared 7/11/2024 Operational Period - Date 7/12/2024				
Prepared By <i>Dakota Fulks ASGS</i> Operational Period - Time 0800-2030				

Helibase Information  
 Scott Valley Helibase A30  
 530-468-1294  
 41 33.395 N  
 122 51.208 W  
 Siskiyou Helibase SIY  
 41 46.530 N  
 122 28.330 W

\*\*day to day changes with sunrise/sunset/pumpkin times  
 \*pumpkin 2030 reflects 07/11/24

Short Haul  
 3SH  
 SVHB  
 Reeding  
 Request Procedure for These Aircraft:  
 Communications/Dispatch on Command,

General Remarks, Safety Notes, Hazards, Air Operations Special Equipment, etc.  
 \*All Aircraft orders go to Scott Valley Helibase  
 \*Be aware of retardant avoidance areas, 300ft away from waterways and bodies of water.  
 \*Sanitize Buckets before changing water sources.  
 \*Clear drop area/line before initiating drop sequence.  
 \*Be cognizant of all overhead and environmental hazards while working with Aircraft.  
 \*All GPS is to be collected in DD° MM.MMM'  
 \*ALL water and retardant picks/drops need to be tracked and recorded  
 \*Aviation daily cost to: [Scottvalleyhb2023@gmail.com](mailto:Scottvalleyhb2023@gmail.com)

Incident Frequencies	RX	Tone	TX	Tone	AM/FM	Position	Name	Phone	EQUIPMENT/SUPPLIES
TFR Victor	120.5250		120.5250		AM				
Rotor Victor	132.5750		132.5750		AM	AOBD	Kyle Beinschroth	760-617-9493	
Briefing Victor	125.1250		125.1250		AM	ASGS			
AirTactics	164.7750		164.7750		FM	ASGS-T	Dakota Fulks	530-736-2863	
A/G CMD	166.6000		166.6000		FM	HEBM-SVHB	Lee Stewart	775-220-6364	
A/G TAC	168.3750		168.3750		FM				
TOLC	169.2000		169.2000		FM	HLCO	Matt Lynde	530-919-8673	
DECK	163.1000		163.1000		FM				
AIR GUARD	168.6250	156.7	168.6250	110.9	FM	HEBM-SIY	Dennis Cobb	530-526-6994	
CALCORD	156.0750	156.7	156.0750	156.7	FM				
						UAO	Tyler Detrick	530-925-9668	

HELICOPTERS - Scott Valley Helibase													
FAA #	TYPE	Make/Model	Helibase	Start	Avail	Remarks	FAA #	TYPE	Make/Model	Airport	Start	Avail	Remarks
503	3	AS350B3E	SVHB	0800	0830	Recon, Bux, PSD, IA	N181EH	3	AS350B3E	SIY	0800	0830	Recon
N353SH	3	AS350B3E	SVHB	0800	0830	Short Haul, Recon, Bux, PSD, IA	N4582D	2	UH-1H	SIY	0800	0830	Bucket
502	3	AS350B3E	SVHB	0800	0830	Recon, Bux, PSD, IA	N5517N	2	UH-1H	SIY	0800	0830	Bucket
532	2	Bell 205A++	SVHB	0800	0830	Bux, Troop transport, Recon	N45917	1	S-61	SIY	0800	0830	Tanked
N357KA	1	Kmax	SVHB	0800	0830	Bux, Cargo	N805PJ	1	UH-60	SIY	0800	0830	Bucket
N675TH	1	Kmax	SVHB	0800	0830	Bux, Cargo	N80BH	1	UH-60	SIY	0800	0830	Bucket
N39HX	1	Kmax	SVHB	0800	0830	Bux, Cargo	N517MB	1	UH-60	SIY	0800	0830	Bucket
N40HX	1	Kmax	SVHB	0800	0830	Bux, Cargo	N696ZR	1	S-64	SIY	0800	0830	Tanked
							G841	1	UH-60				24 hour hoist

FIXED WING AA/HLCO													
FAA #	Call Sign	Make/Model	Base	Start	Avail	Remarks	FAA #	TYPE	Make/Model	Airport	Start	Stop	Remarks
N32WS	AA05	AC680	SIY	0800	0830		N491NC	3	Bell 429	SIY	1800	0800	HLCO
N14HX	507	Bell 407HP	SIY	0800	0830	HLCO, IR	N259PJ	1	CH-47	SIY	1800	0800	
							607	1	S70i	SIY	1800	0800	
							N238PJ	1	CH-47	SIY	1800	0800	



## HELICOPTER EXTRACTION OPERATIONS

The intent of helicopter insertion/extraction operations is to facilitate the movement of personnel to and from inaccessible areas. These operations are not meant to be a medical transport resource; life flight and ground transportation should always be ordered in addition to the extraction aircraft and crew.

### ORDERING:

- On-scene EMT and/or Incident within Incident IC determines that an extraction helicopter is needed and places the order through the pre-established procedures:
  - Division Supervisor
  - Incident Communications
  - Dispatch Center
- When ordering extraction aircraft provide the following information:
  - Location (Lat/Long) of patient
  - Known Hazards
  - Wind Speed and Direction
  - Terrain
  - Incident Updates

### SITE SELECTION:

- The helicopter crew will confirm the extraction location when they arrive on scene. However, a general rule is any clearing that is 10'x10' with visible sight lines to the sky is a suitable extraction site.
- If the terrain is steep, excavating a platform or shelf can make it easier for patient packaging.

QR Code-Short-haul Site Selection Video



### CONSIDERATIONS:

- Short-haul and hoist are safe and efficient operations for extracting injured personnel of any severity including "Green" patients.
- Ensure area is clear of non-essential items, hazards, and personnel.
- Rotor wash may affect overhead hazards and blowing dust/debris can create brown out conditions or influence fire behavior.
- Aerial Supervision is valuable for coordinating aviation medevac/extraction missions and should be ordered if available and not currently present.
- The aircrew will make the final assessment of the mission. Always have a contingency plan in case a helicopter cannot complete the request.

### DEFINITIONS:

**Rescue Hoist:** A cable winching device mounted to the helicopter that can lower/raise persons attached to a cable.

- Common cable lengths are 250-300 feet.

**Short-haul:** To insert or extract one or more persons suspended on a fixed line beneath a helicopter.

- Common short-haul line lengths are 100, 150, and 250 feet. The lines can also be connected for a longer line if the situation requires it.

## FINANCE MESSAGE

<b>Fire Name:</b> Shelly Fire
<b>Fire Number:</b> CA-KNF-005159
<b>Accounting Code:</b> P5 R18J (0505)
<b>Email:</b> <a href="mailto:2024.shelly.finance@firenet.gov">2024.shelly.finance@firenet.gov</a>
<b>Incident Phone:</b> 530-536-0781

### Finance Documents Needed upon "Check In" (If Not Already Submitted):

Please email these documents or scan the QR Code below, attach & submit.			
<b>FED Equipment/ Crews:</b> <ul style="list-style-type: none"> <li>• Manifest - showing employment type (GS or WG) or AD rates if applicable</li> </ul>	<b>Overhead:</b> <ul style="list-style-type: none"> <li>• AD/Casual Hire Form</li> <li>• If regular Agency please ensure "GS" or "WG" is written on your CTR</li> </ul>	<b>Contract Equipment/ Contract Crews:</b> <ul style="list-style-type: none"> <li>• Agreement</li> <li>• Manifest</li> <li>• Resource Order</li> <li>• Inspections</li> </ul>	<b>Cooperator:</b> <ul style="list-style-type: none"> <li>• Cooperative Agreement</li> <li>• Resource Order</li> </ul>

### When emailing finance:

- Overhead/FED: *subject line:* TIME, Resource #, Resource Name
- Equipment/Cooperator: *subject line:* EQTR, Resource #, Resource Name

**Prior to your demob date, please contact Finance *via email* to expedite the demob process.**  
**Upon submittal of your final CTR/Shift Tickets, Finance will email you copies of your pay documents for review and signature.**

**Local Government Resources & CalOES on CFAA also check-in here:**



Rick Young CalOES AREP  
616-541-3165



# FINANCE MESSAGE



## TIME Process

**Shift Tickets:** Line supervisors complete for Hired Equipment and submit hard copy to TIME, OR complete an e-Shift Ticket online at <https://shifftickets.fire.ca.gov> AND provide a hard copy to TIME. Shift Ticket example on page 35 of IAP.

**Personnel Time:** All Cal Fire personnel check in to TIME trailer located at fairgrounds in Yreka.

**Hired Equipment:** All Hired Equipment resources check in to TIME trailer located at fairgrounds in Yreka with a copy of your agreement.

**Local Government:** Check-in with OES Rep, located at the fairgrounds in Yreka. See page 34 of IAP.

## COMP/CLAIMS

Report all comp claims to FINANCE.

## AO-341 Hotel Rosters

Please sign the roster for every night.

## Feeding

Feeding is provided at the Yreka fairgrounds.

Off-Site feeding is approved for DINNER ONLY for personnel lodging in the following locations:

MEDFORD			ASHLAND	Mt. Shasta
Elmer's 2000 Biddle Rd. Medford, OR	Elmer's 68 E Stewart Ave. Medford, OR	Applebee's 1388 Biddle Rd. Medford, OR	Oak Tree Bar & Grill 2510 Ashland St. Ashland, OR	Black Bear Diner 401 W Lake St. Mt. Shasta, CA



# CAL FIRE SISKIYOU UNIT



## Finance Section – Shift Ticket Examples

### 24HR LINE RESOURCE - 2 OPERATORS

EMERGENCY SHIFT TICKET and EVALUATION FORM <small>The responsible Government Officer will complete this form each shift.</small>						Contractor Name <b>DIRT PUSHERS LLC</b>			
Incident or Project Name <b>SHELLY</b>		Incident Number <b>CAKNF005159</b>		Request Number <b>E-20007</b>		Operator #1 (DAY SHIFT) <b>FIRST &amp; LAST</b>		Operator #2 (NIGHT SHIFT) <b>FIRST &amp; LAST</b>	
Agreement Number <b>SHU 0012345678</b>						Operator Furnished By: <input checked="" type="checkbox"/> Contractor <input type="checkbox"/> Government			
Equipment Make <b>2002 CATERPILLAR</b>			Equipment Model / Type <b>D6N XL, TYPE 2 - E</b>			Operating Supplies Furnished By: <input checked="" type="checkbox"/> Contractor <input type="checkbox"/> Government			
Serial Number <b>COMPLETE SERIAL #</b>			License Number			Equipment Status <input checked="" type="checkbox"/> Inspected <input checked="" type="checkbox"/> Under Agreement			
Equipment Use						Released by Government <input type="checkbox"/> Withdrawn by Contractor <input type="checkbox"/>			
Date Mo / Day		Start		Stop		(Circle) Hours		Days / Miles	
		Work		Assignment		Remarks/Comments**			
<b>6/18</b>		<b>0701</b>		<b>2400</b>		<b>17</b>		<b>DIV X</b>	
<b>6/19</b>		<b>0001</b>		<b>0700</b>		<b>7</b>		<b>DIV X</b>	
Vendor Rating						Govt. Rep. Name and Position – PRINT <b>Print Your Name</b>			
						Govt. Rep. Signature <i>Your Signature</i>			
						Contractor Signature <i>Contractor Signature</i>			
						Date <b>7/9/2024</b>			
						Time <b>0700</b>			
* NOTE: any rating of POOR requires an explanation in Comment Section.						CAL FIRE 297 (Rev 3-2011)			
** Final evaluation or for more documentation, use a CALFIRE Form 230 or equivalent.									

### 12HR LINE RESOURCE - 1 OPERATOR

EMERGENCY SHIFT TICKET and EVALUATION FORM <small>The responsible Government Officer will complete this form each shift.</small>						Contractor Name <b>TRANSPORTS EXPRESS</b>			
Incident or Project Name <b>SHELLY</b>		Incident Number <b>CAKNF005159</b>		Request Number <b>E-20008</b>		Operator #1 (DAY SHIFT) <b>FIRST &amp; LAST</b>		Operator #2	
Agreement Number <b>SHU 0012345678</b>						Operator Furnished By: <input checked="" type="checkbox"/> Contractor <input type="checkbox"/> Government			
Equipment Make <b>1999 PETERBILT 379</b>			Equipment Model / Type <b>TRANSPORT 18 WHEEL</b>			Operating Supplies Furnished By: <input checked="" type="checkbox"/> Contractor <input type="checkbox"/> Government			
Serial Number <b>LAST 8 OR FULL VIN</b>			License Number <b>12345A1</b>			Equipment Status <input checked="" type="checkbox"/> Inspected <input checked="" type="checkbox"/> Under Agreement			
Equipment Use						Released by Government <input type="checkbox"/> Withdrawn by Contractor <input type="checkbox"/>			
Date Mo / Day		Start		Stop		(Circle) Hours		Days / Miles	
		Work		Assignment		Remarks/Comments**			
<b>4/1</b>		<b>0701</b>		<b>1900</b>		<b>12</b>		<b>DIV X</b>	
Vendor Rating						Govt. Rep. Name and Position – PRINT <b>Print Your Name</b>			
						Govt. Rep. Signature <i>Your Signature</i>			
						Contractor Signature <i>Contractor Signature</i>			
						Date <b>7/9/2024</b>			
						Time <b>1900</b>			
* NOTE: any rating of POOR requires an explanation in Comment Section.						CAL FIRE 297 (Rev 3-2011)			
** Final evaluation or for more documentation, use a CALFIRE Form 230 or equivalent.									



**SHELLY**  
**INCIDENT TRAINING MESSAGE**  
*WRITING EFFECTIVE PERFORMANCE EVALUATIONS*

- ✓ Provide **CONSTRUCTIVE FEEDBACK** for trainee and make your words valuable for the person or people responsible for reviewing the evaluation.
- ✓ Describe what the trainee did on the assignment to justify their rating. **PAINT THE PICTURE** to the reviewing officials on the complexity of the assignment!
- ✓ Be **HONEST** enough to let the trainee know what their strengths and weaknesses are, how they performed and if they met, did not meet, or exceeded your expectations.
- ✓ **DOCUMENT** what skills or tasks the trainee should work on next if recommending continuing assignments.
- ✓ If recommending certification, **BE SPECIFIC** in the performance evaluation that you are recommending them for certification.

Register Here



John Fakehany  
 TNSP  
 909-693-9748

Jacobie Waters  
 TNSP(T)  
 530-414-3470

**SHELLY INCIDENT JULY**  
**JULY 12, 2024**

**HUMAN RESOURCE MESSAGE**



Many employees do not formally report harassment for a variety of reasons. They may not want to cause trouble, they may not trust their company to act, or they may fear retaliation from the harasser or coworkers. Most of the time they just want it to go away.

While these concerns are understandable, it's very important to report workplace harassment to your HR department or other decision makers. If you don't report harassment, there won't be a chance to deal with it and make it stop.

This incident has a policy on harassment to include reporting misconduct to the HRSP, The incident HRSP has the capability of addressing misconduct on the incident, as well as reaching out to your home agency to ensure harassment stops when you get back to your home unit.

The requirement of zero tolerance of harassment, bullying, intimidation, or any similar behavior on this incident.

Feel free to call/text or come by the HRSP trailer.

**Adam Alvarez – HRSP – (707) 373-8715**  
 NFFE Union Contact:

Gay Baxter Title: Local 1865 Vice President

E-mail: [gay.baxter@usda.gov](mailto:gay.baxter@usda.gov); Phone: Cell – (530) 598-6095

**US Postal Service – General Delivery – (530) 467-3981 – 9:00am – 5:00 pm M-F**  
**Your Name – Bring I.D.**

**119 Diggles**  
**General Delivery**  
**Etna CA, 96027**



If you would like to be part of our Cooperators Team, use this QR code to have your name on our mailing list and Cooperators Contact Sheet. You can get our meeting updates, agendas and IAP's.



---

## **Logistics Hours**

<b>Caterer Hours:</b>	<b>Breakfast: 0530 - 0900</b>
	<b>Dinner: 1800 - 2130</b>
<b>Shower:</b>	<b>0500-1200, 1400 – 2300</b>
<b>Supply:</b>	<b>063-2130</b>
<b>Laundry:</b>	<b>0500-2200</b>
<b>Fuel Tender</b>	<b>0600-1300, 1500-2200</b>

THIS PAGE INTENTIONALLY LEFT BLANK

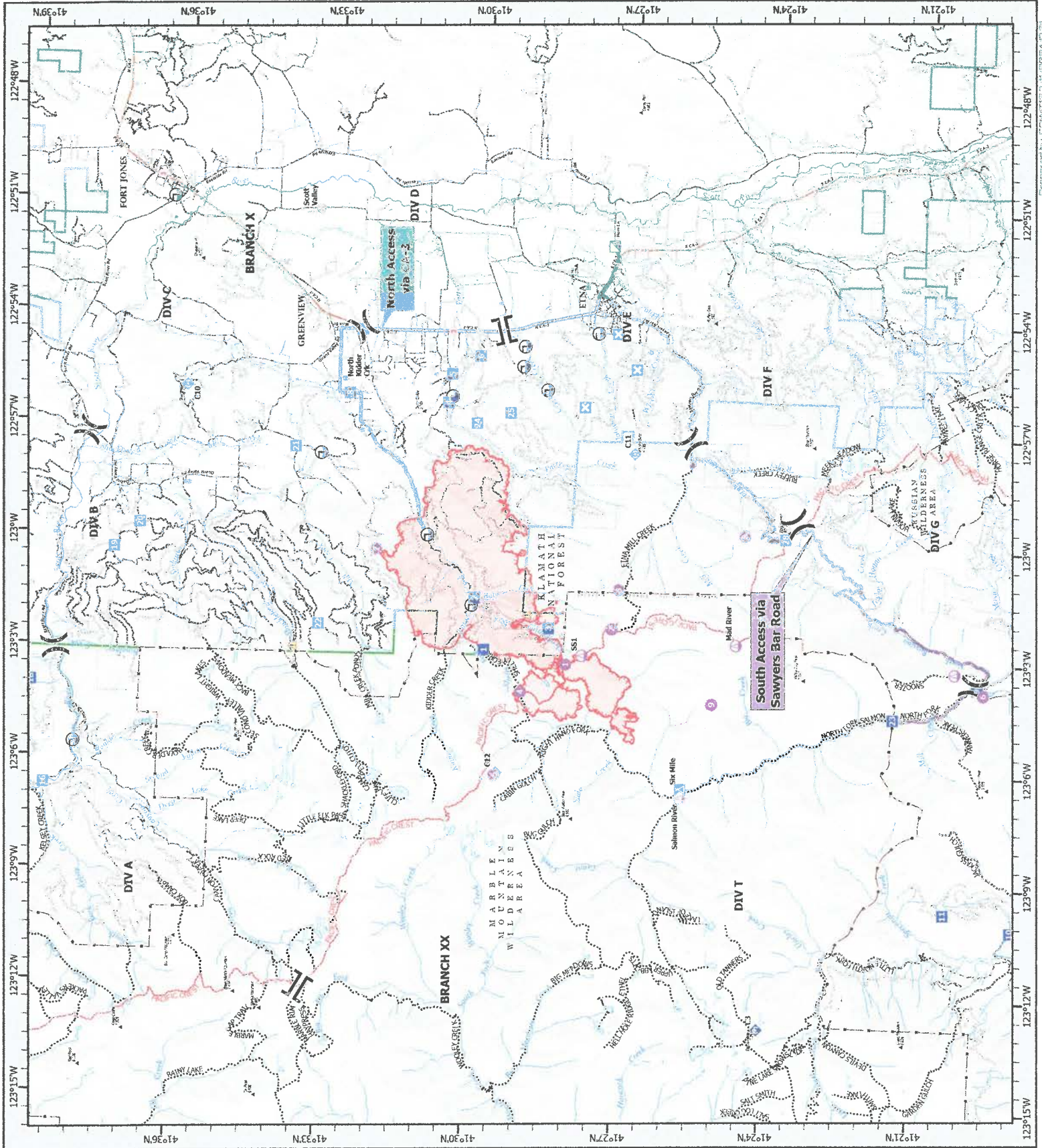
**TRANSPORTATION**  
SHELLY  
07/12/24



- Helispot
  - Helibase
  - Sling Site
  - Division Break
  - Branch Break
  - Incident Command Post
  - Drop Point
  - Closure
  - Camp
  - Staging Area
  - Value at Risk
  - Landmark
  - Gate
  - Bridge
  - Structure Wrap
  - Repair Point
  - Fence - Cut/Damaged
  - Culvert
  - Repeater
  - Safety Zone
  - Hazard
  - Draft Site
  - Uncontained
  - Wildfire Daily Fire Perimeter
  - Road - Light Duty - Dirt
  - Road - Light Duty - Gravel
  - Road - Light Duty - Paved
  - Road - Light Duty - Unspecified
  - Road - Unimproved
  - Secondary Highway
  - Road, Unspecified
  - Road, Paved
  - Road, Dirt
  - National Trail
  - Trail
  - USFS Wilderness
  - USFS Administrative Forest
  - Non Forest
- Transport Routes**
- North Access
  - South Access

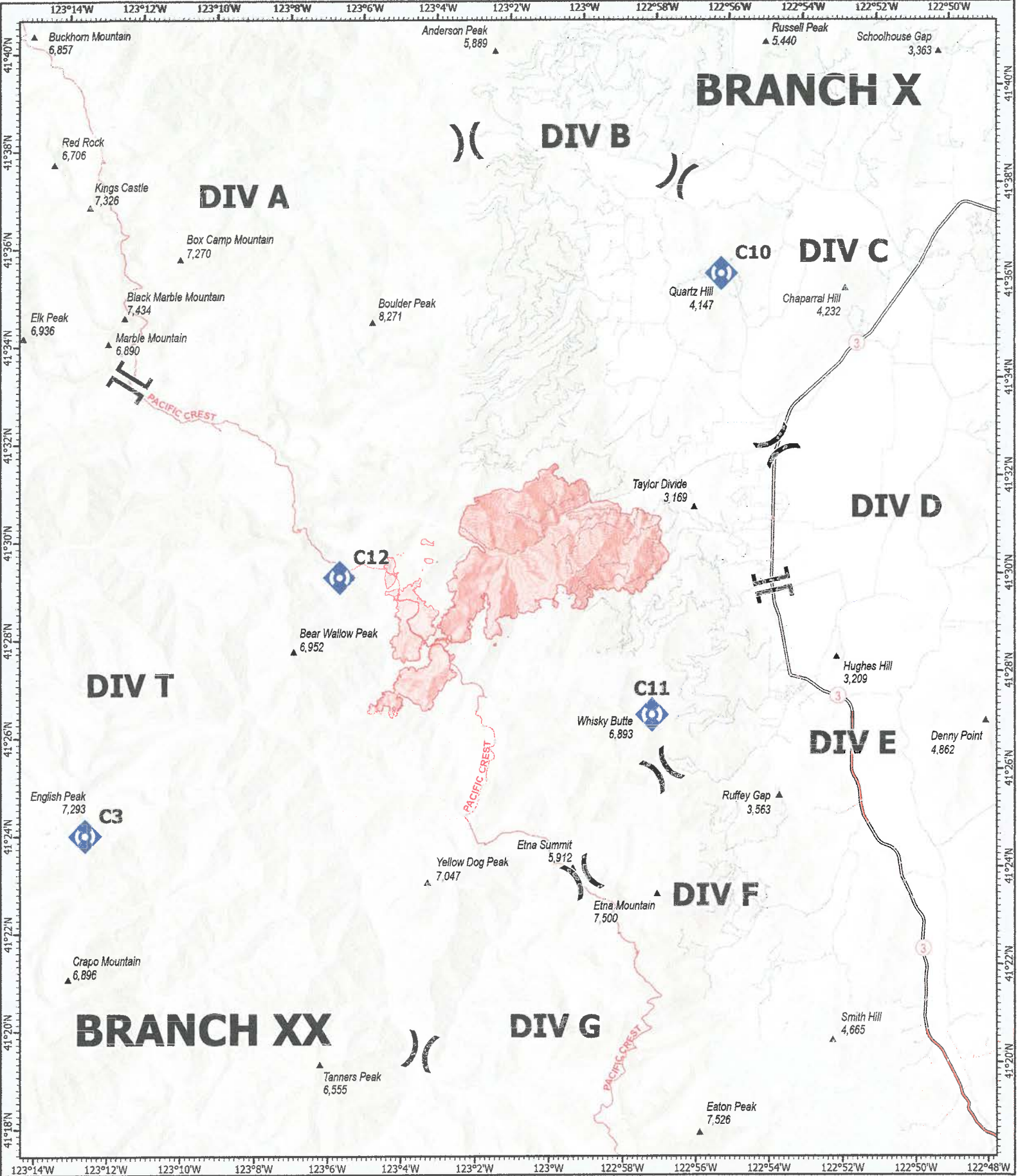


1:150,000 NAD83 UTM 11N



GENERATED BY: CRIMTECH 11/2024 FILE





- Division Break
- Branch Break
- Repeater
- Wildfire Daily Fire Perimeter
- Gap; Summit
- Non Forest

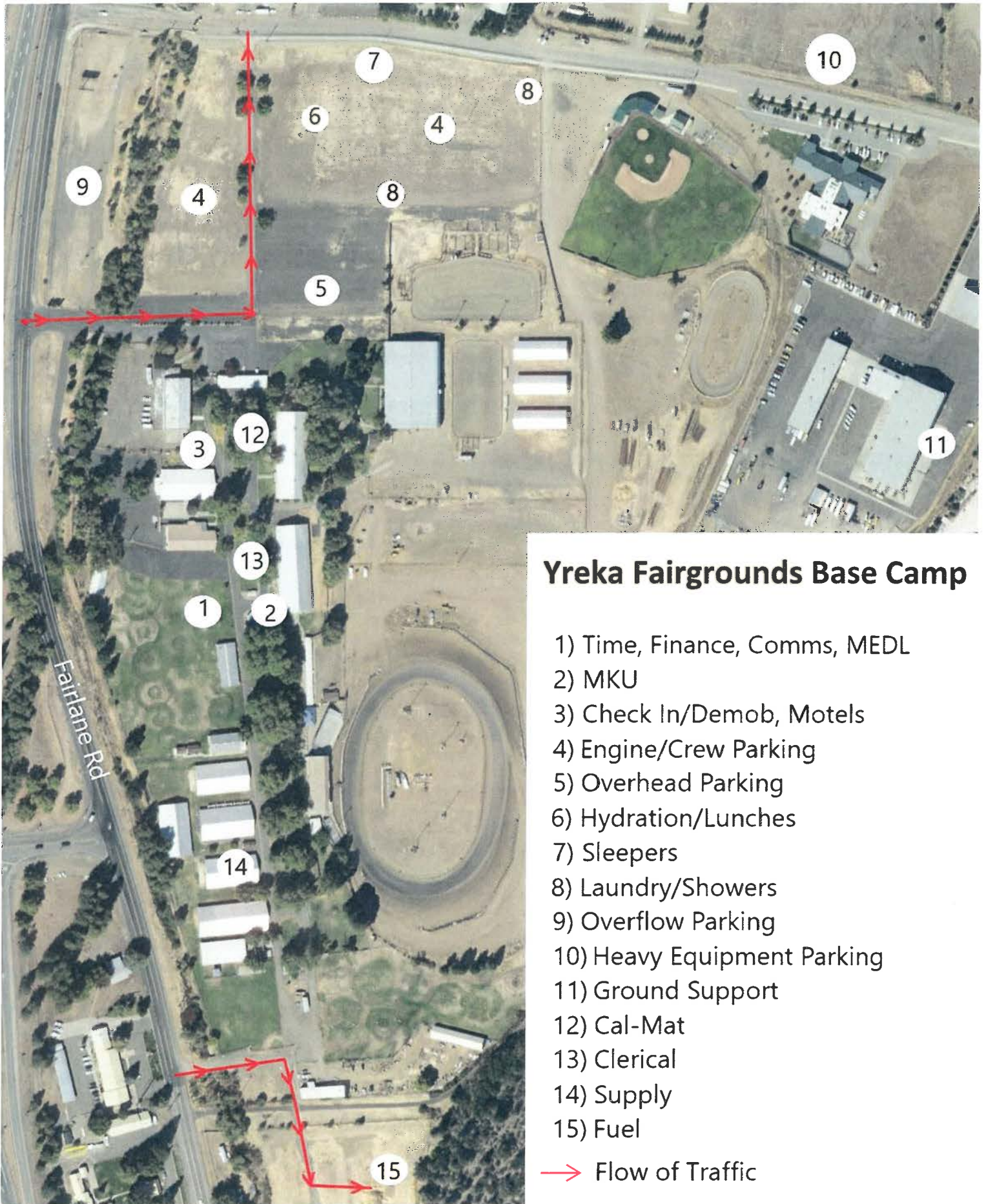
**COMMUNICATIONS**  
**SHELLY**  
 CA-KNF-005159  
 07/12/24  
 43

1:100,000 NAEBS CA ALBERS  
 0 1 2 4 Miles  
 Prepared by: CRIMT12 7/11/2024 10:15









## Yreka Fairgrounds Base Camp

- 1) Time, Finance, Comms, MEDL
- 2) MKU
- 3) Check In/Demob, Motels
- 4) Engine/Crew Parking
- 5) Overhead Parking
- 6) Hydration/Lunches
- 7) Sleepers
- 8) Laundry/Showers
- 9) Overflow Parking
- 10) Heavy Equipment Parking
- 11) Ground Support
- 12) Cal-Mat
- 13) Clerical
- 14) Supply
- 15) Fuel

→ Flow of Traffic

Shelly Incident CA-KNF-005159  
 1712 Fairlane Rd, Yreka CA 96097

# CIIMT 12 Line Order Worksheet



Date, Time, and From Who Order Was Placed:	Order Number:	Delivery Location and Time (Div, LZ, DP, Lat/Long, etc)	Delivery Mode (Delivery, Pickup, Helo, etc.):
Order received in Communications by: <b>Delivery by who &amp; time and/or date scheduled. Detailed instructions and notes if needed:</b>			
<b>Item #</b>	<b>Description</b>	<b>Quantity Ordered</b>	
1	<b>Mark III Pump Kit:</b> Contains frame and Alice Pack with Straps, 1ea 10' x 1.5" Hard Suction, Instructions, Tool Roll Kit, 1ea 35GPM Nozzle, 1ea 60GPM Nozzle, 1ea Twin Tip Nozzle 1", 1qt two cycle oil, Packsack-waterproof w/straps, Collapsible Bucket, Hand Primer, 1ea 10' x 20" Plastic Sheeting, 1ea 5 Gallon Fuel Can with Adapters, 1ea 1.5" Check and Bleeder Valve, 1ea 1.5" Foot Valve, 1ea 1.5" Pressure Relief Valve, 1ea 1.5" Gated Wye, 1ea 1.5" Gated Wye, 1ea Spanner Wrench, P-Cord		
2	<b>UNI-Engine (Klump Pump)</b> Dimensions: 7' wide x 10' Long, 1000 Gallon Capacity, 13 HP, 90 GPM, @ 110 psi, Unleaded Fuel, 2&8' of 2" Hard Suction, 1000' of 1.5", 800' of 1", 400' 3/4" Hose, Self-leveling System with Manual Jacks, 1600 lbs. Fully Equipped w/Type-2 Helo Cables, 5 Gallons of Foam with proportioner		
3	<b>Norton Hose Kit</b> 1 1/2" Hose - 5000 Feet, 1" Hose - 2000 Feet, 3/4" Hose 2000 Feet, 1 1/2" Gated Wye's - 25ea, 1 1/2" to 1" Reducers - 25 ea, 1" to 3/4" Reducers 25 ea, 1" Combination Nozzles - 25 ea, 3/4" Nozzles - 25 ea, Hose Clamps - 3 ea, Class A Foam - 25 Gallons, 1 1/2" Combo Nozzles - 5 ea, 3/4" Wye's - 25 ea		
4	<b>Half-Norton Hose Kit</b> 1 1/2" Hose, 2500 Feet, 1" Hose, 1000 Feet, 3/4" Hose, 1000 Feet, 1 1/2" Gated Wye's, 12ea, 1 1/2" to 1" Reducers, 12ea, 1" to 3/4" Reducers, 12ea, 1" Combo Nozzles, 12 ea, 3/4" Nozzles, 12ea, Hose Clamps - 3 ea, Class A Foam - 10 Gallons, 1 1/2" Combo Nozzles - 2 ea, 3/4" Wye's - 12 ea		
5	<b>Coyote Package (For a 20 Person Crew - Approx 755lbs)</b> 50 gal Water - 12 cases, 25 gal Gatorade - 6 cases, 3 Cases of MRE's, 40ea Sack Lunches, 1 case - AA Batteries, 5 Rolls Toilet Paper, 20 Gl Gasoline, 4 Gl Bar and Chain Oil, 1/2 Box Trash Bags, 25ea Bath-In-A-Bags, 25ea Towel, Cleansing 12" x 30", 2 to 4ea Gold Bond, 40oz. 2-Cycle Milk.		
6	<b>1000 foot hose lay kit includes the following:</b> 10ea 100' x 1 1/2" Hose, 10ea 100' x 1" Hose, 10ea 1 1/2" Gated Wyes, 10ea 1 1/2" to 1" Reducers, 10ea 1" Nozzles		
7	<b>2000 foot hose lay kit includes the following:</b> 20ea 100' x 1 1/2" Hose, 20ea 100' x 1" Hose, 20ea 1 1/2" Gated Wyes, 20ea 1 1/2" to 1" Reducers, 20ea 1" Nozzles		
8	<b>3000 foot hose lay kit includes the following:</b> 30ea 100' x 1 1/2" Hose, 30ea 100' x 1" Hose, 30ea 1 1/2" Gated Wyes, 30ea 1 1/2" to 1" Reducers, 30ea 1" Nozzles		

CI/IMT 12 Line Order Worksheet - Page 2

Item #	Description	NFES #	Quantity Requested	Item #	Description	NFES #	Quantity Requested
9	Hose (50') Garden, 3/4"	1016		34	Gas Unleaded (Gallons)		
10	Hose (100'), 1"	0966		35	Oil 2 Cycle (Pints)	0344	
11	Hose (100'), 1 1/2"	0967		36	Bar oil (Qts)	1869	
12	Nozzle, Garden, 3/4"	0136		37	Drip torch - ea	0241	
13	Nozzle, Forester, 1"	0024		38	Drip torch mix 3.5 : 1.5 (gallon)		
14	Nozzle, KK Type, 1"	1081		39	Fusees BX	0105	
15	Nozzle, KK Type, 1 1/2"	1082		40	Flare Gun Rounds (12/BX)	0687	
16	Wye, Gated, 3/4"	0739		41	Cartridge #6 purple (box)	0372	
17	Wye, Gated, 1"	0839		42	Batteries "AA" Pkg, (24/PKG)/BX	0030	
18	Wye, Gated, 1 1/2"	0883		43	Ribbon, Flagging (Specify Color)		
19	Inline Tee, 1" x 1" x 3/4"	1809		44	Water, Cubies		
20	Inline Tee 1" x 1" x 1"	2240		45	Water, Bottled, Cases		
21	Inline Tee 1 1/2" X 1"	0731		46	Gatorade		
22	Reducer 1" X 3/4"	0733		47	MRE's (12/BX)	1842	
23	Reducer 1 1/2" to 1"	0009		48	Heavy Mill Plastic	0283	
24	Increase, 3/4" X 1"	2235		49	Washcloth, waterless, Cleansing	0206	
25	Increase, 1" X 1 1/2"	0416		50	Wrap, Structure 54" x 300'	0881	
26	Foam 5 gal	1145		51	Sprinkler Kit		
27	Foam 4 oz (For Backpack Pump)	3400		52	Mark 3 Pump		
28	Backpack Pump	1197		53	Mark 3 Pump Kit w/10 gal Mix Fuel		
29	Pumpkin (Gallons?)			54	Chainsaw Kit	0340	
30	Porta-Tank (Gallons?)			55	Mop-Up Kit, 3-wand	0772	
31	Shovel	170		56	Pump Kit, Lightweight, 2-Cycle	0670	
32	Combi Tool	146		57	Gas, raw and 2 qts 2-Cycle Oil, ea		
33	McCloud	296		58	Lightweight Pump Kit - Cache w/5 gal fuel		
				59	Gas, raw, 1 gallon w/ 1qt 2-cycle oil, ea		

Notes:







# MEDICAL PLAN (ICS 206 WF) CIIMT 12

1. Incident Name				2. Operational Period				
<b>SHELLY INCIDENT CA-KNF-005159</b>				Date/Time: <b>07/12/2024 – 07/13/2024 0700-0700</b>				
3. EMS / Ambulance Services/Aid Stations								
Name	Location			Frequency/Phone		Advanced Life Support (ALS) Yes No		
MT. SHASTA AMBULANCE	YREKA, CA			Shelly Communications		<b>X</b>		
ETNA AMBULANCE	ETNA, CA			Shelly Communications		<b>X</b>		
MT. MEDICS Aid Station	ICP			530-859-2799		<b>X</b>		
4. Air Rescue / Air Ambulance Services								
Name	Phone			Type of Aircraft & Capability				
KRASSEL (N353SH)	Shelly Communications			SHORT HAUL BLS				
MERCY AIR	Shelly Communications			AIR AMBULANCE, 24 HR ALS, NO HOIST				
PHI	Shelly Communications			AIR AMBULANCE, 24 HR ALS, NO HOIST				
REACH AIR	Shelly Communications			AIR AMBULANCE, 24 HR ALS, NO HOIST				
CHP	Shelly Communications			0600-0230, ALS, DAY HOIST ONLY, NO SHORT HAUL				
COAST GUARD	Shelly Communications			24 HR HOIST, BLS ONLY				
National Guard	Shelly Communications			24 HR HOIST, BLS ONLY				
5. Hospitals (all times estimated from incident location)								
Name & Level	GPS Datum – WGS 84 Degrees Decimal Minutes		Travel Time Air Gnd		Phone	Helipad Yes No		Address
UC DAVIS MEDICAL CENTER LEVEL 1 TRAUMA	Lat:	33°33.292'N	1.5hr	6hr	916-734-3790 ER Desk	X		2315 Stockton Blvd. Sacramento, CA 95817
	Long:	121°27.326'W						
MERCY MEDICAL CENTER Redding LEVEL 2 TRAUMA	Lat:	40°34.325'N	40m	3hr	530-225-7200 ER Desk	X		2175 Roseline Ave. Redding, CA 96001
	Long:	122°23.700'W						
ASANTE ROGUE REGIONALMEDICAL CENTER-LEVEL 2	Lat:	42°19.07'N	20m	2hr	541-789-7132 ER Desk	X		2825 E. Barnette Rd. Medford, OR 97504
	Lat:	122°49.90'W						
MERCY MEDICAL CENTER Mt. Shasta LEVEL 3 TRAUMA	Lat:	41°19.111'N	30m	2hr	530-926-9360 ER Desk	X		914 Pine St. Mt. Shasta. CA 96067
	Long:	122°19.200'W						
FAIRCHILD MEDICAL CENTER LEVEL 4 TRAUMA	Lat:	41°43.181'N	20m	1.5h	530-841-6292 ER Desk	X		444 Bruce St. Yreka, CA 96097
	Long:	122°38.757'W						
6. Division / Crew Emergency Pre-Plan				<i>Update and discuss with assigned resources daily.</i>				
Fireline EMT / Medic's Division / Branch Location								
Air Hoist site location site: Lat: / Long: / Elevation:								
Helispot: Lat: / Long: / Elevation:								
7. Prepared By (Medical Unit Leader)			8. Date/Time		9. Reviewed By (Safety Officer)		10. Date/Time	
<i>Ron Sandler</i> MEDL			07/11/2024 1600		<i>Michael Seymour</i> SOFC		07/11/2024 1600	

# MEDICAL PLAN (ICS 206 WF) CIIMT 12

Medical Incident Report																													
<p><b>FOR A NON-EMERGENCY INCIDENT, WORK THROUGH CHAIN OF COMMAND TO REPORT AND TRANSPORT INJURED PERSONNEL AS NECESSARY.</b></p> <p><b>FOR A MEDICAL EMERGENCY: IDENTIFY ON SCENE INCIDENT COMMANDER BY NAME AND POSITION AND ANNOUNCE "MEDICAL EMERGENCY" TO INITIATE RESPONSE FROM IMT COMMUNICATIONS/DISPATCH.</b></p>																													
<p><b>Use the following items to communicate situation to communications/dispatch.</b></p>																													
<p><b>1. CONTACT COMMUNICATIONS / DISPATCH</b> (Verify correct frequency prior to starting report)  <i>Ex: "Communications, Div. Alpha. Stand-by for Emergency Traffic."</i></p> <p><b>2. INCIDENT STATUS:</b> Provide incident summary (including number of patients) and command structure.  <i>Ex: "Communications, I have a Red priority patient, unconscious, struck by a falling tree. Requesting air ambulance to Forest Road 1 at (Lat./Long.) This will be the Trout Meadow Medical, IC is TFLD Jones. EMT Smith is providing medical care."</i></p>																													
Severity of Emergency / Transport Priority	<input type="checkbox"/> <b>RED / PRIORITY 1 Life or limb threatening injury or illness. Evacuation need is IMMEDIATE</b> <i>Ex: Unconscious, difficulty breathing, bleeding severely, 2° - 3° burns more than 4 palm sizes, heat stroke, disoriented.</i> <input type="checkbox"/> <b>YELLOW / PRIORITY 2 Serious Injury or illness. Evacuation may be DELAYED if necessary.</b> <i>Ex: Significant trauma, unable to walk, 2° - 3° burns not more than 1-3 palm sizes.</i> <input type="checkbox"/> <b>GREEN / PRIORITY 3 Minor Injury or illness. Non-Emergency transport</b> <i>Ex: Sprains, strains, minor heat-related illness.</i>																												
Nature of Injury or Illness & Mechanism of Injury			Brief Summary of Injury or Illness <i>(Ex: Unconscious, Struck by Falling Tree)</i>																										
Transport Request			Air Ambulance / Short Haul/Hoist Ground Ambulance / Other																										
Patient Location			Descriptive Location & Lat. / Long. <i>(WGS84)</i>																										
Incident Name			Geographic Name + "Medical" <i>(Ex: Trout Meadow Medical)</i>																										
On-Scene Incident Commander			Name of on-scene IC of Incident within an Incident <i>(Ex: TFLD Jones)</i>																										
Patient Care			Name of Care Provider <i>(Ex: EMT Smith)</i>																										
<p><b>3. INITIAL PATIENT ASSESSMENT:</b> Complete this section for each patient as applicable (start with the most severe patient)</p> <p>Patient Assessment: See IRPG PAGE 106</p>																													
Treatment:																													
<p><b>4. TRANSPORT PLAN:</b></p> <p>Evacuation Location (if different): <i>(Descriptive Location (drop point, intersection, etc.) or Lat. / Long.)</i> Patient's ETA to Evacuation Location:</p>																													
Helispot / Extraction Site Size and Hazards:																													
<p><b>5. ADDITIONAL RESOURCES / EQUIPMENT NEEDS:</b></p> <p><i>Example: Paramedic/EMT, Crews, Immobilization Devices, AED, Oxygen, Trauma Bag, IV/Fluid(s), Splints, Rope rescue, Wheeled litter, HAZMAT, Extrication :</i></p>																													
<p><b>6. COMMUNICATIONS: Identify State Air/Ground EMS Frequencies and Hospital Contacts as applicable</b></p> <table border="1" style="width: 100%; border-collapse: collapse;"> <thead> <tr> <th style="width: 15%;">Function</th> <th style="width: 25%;">Channel Name/Number</th> <th style="width: 15%;">Receive (RX)</th> <th style="width: 15%;">Tone/NAC *</th> <th style="width: 15%;">Transmit (TX)</th> <th style="width: 15%;">Tone/NAC *</th> </tr> </thead> <tbody> <tr> <td>COMMAND</td> <td></td> <td></td> <td></td> <td></td> <td></td> </tr> <tr> <td>AIR-TO-GRND</td> <td></td> <td></td> <td></td> <td></td> <td></td> </tr> <tr> <td>TACTICAL</td> <td></td> <td></td> <td></td> <td></td> <td></td> </tr> </tbody> </table>						Function	Channel Name/Number	Receive (RX)	Tone/NAC *	Transmit (TX)	Tone/NAC *	COMMAND						AIR-TO-GRND						TACTICAL					
Function	Channel Name/Number	Receive (RX)	Tone/NAC *	Transmit (TX)	Tone/NAC *																								
COMMAND																													
AIR-TO-GRND																													
TACTICAL																													
<p><b>7. CONTINGENCY: Considerations:</b> If primary options fail, what actions can be implemented in conjunction with primary evacuation method? Be thinking ahead. .</p>																													
<p><b>8. ADDITIONAL INFORMATION:</b> Updates/Changes, etc. .</p>																													
<p><b>REMEMBER:</b> Confirm ETA's of resources ordered. Act according to your level of training. Be Alert. Keep Calm. Think Clearly. Act Decisively. .</p>																													