

Saturday

INCIDENT ACTION PLAN SHELLY INCIDENT

CA-KNF-005159
P5 R18J (0505)



OPERATIONAL PERIOD

7/13/2024 0700
to
7/14/2024 0700

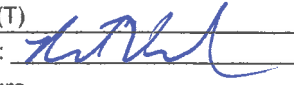


Check-In, IAP, Maps,
Demob, Briefing

Saturday

THIS PAGE INTENTIONALLY LEFT BLANK

ORGANIZATION ASSIGNMENT LIST (ICS 203)

1. Incident Name: SHELLY		2. Operational Period: Date From: 7/13/2024 Time From: 0700		Date To: 7/14/2024 Time To: 0700	
3. Incident Commander(s) and Command Staff:			7. Operation Section:		
IC/UC's	M. Conklin/K. Cunningham		Operations	J. Owings/S. Lauderdale/J. Flores(T)	
Deputy	N. Johnny/P. Russell(T)		Deputy Operations	J. Chester(T)/A. Schultze(T)	
Safety Officer	M. Seymour/M. Lipson		Night Ops	K.Bohall/R. Szczepanek(T)	
Information Officer	L. Sieliet/S. Bishop/D. McMillin(T)		Strategic Ops	E. Zanotto/J. Sohr(T)	
Liaison Officer	J. Martinez/J. Neumann(T)/T. Gonzalez(T)		Branch	X	J. Walton (12)/J. Vickers (T)
			Division/Group	A	G. Lowdermilk/S. Rushing (T)
4. Agency/Organization Representatives:			Division/Group	B	C. Markey(12)/J. Rogers(T)
Agency/Organization	Name		Division/Group	C	J. Jones
USFS	C. Christofferson/N. Kelly(T)/D. Carlson(T)		Division/Group	D	J. Duncan, A. Cholico(12)(T)
CALFIRE	M. Smith		Division/Group		
CDCR	J. Leventon		Branch	XX	T. Richter(12), M. Khazaal(T)
Timber Industries	D. Quigley		Division/Group	E	C. Martinelli, S. Pindell(12)
Karuk Tribe	G. Moon		Division/Group	F	D. Helgeson/B. Boatman (T)
READ	M. Meneks/C. Maciel(T)		Division/Group	G	A. Luna/R. Flitt(T)
Cultural Specialist	M. Sanchez		Division/Group	T	R. Noxon/J. Bird(T)
BIA	G. Perry		Division/Group	Night	TBD
			Division/Group		
			Branch	Contingency	L. Wright
			Division/Group	North	S. Kovacs/J. Stitt(T)
			Division/Group	South	R. DeCamp
			Division/Group	East	S. Clement(12)
			Division/Group		
			Branch	Structure	J. Howard (12)
			Division/Group	Etna	R. West(12)
5. Planning Section:			Division/Group	Quartz Valley	M. Milojevich (12)
Chief	B. Vergne/G. Ozard/ R. Verdie(T)/J. Saiz(T)		Division/Group	Greenview	C. Reginatto(12)
Deputy	S. Anderson		Division/Group		
Resource Unit	M. Yeun/S. Frank(T)/T.Hullquist(T)		Branch	FSR	D. Denman (12)
Situation Unit	R. Rook/R. Toby/R. Resnick(T)		Division/Group		
Documentation Unit	RIST		Division/Group		
Demobilization Unit	J. Grisedale		Division/Group		
GISS	R. Gonzalez/B. Hurtado		Division/Group		
FBAN	P. Doyle		Staging Area	Yreka Staging	J. Ravenscroft (12)
IMET	J. Ruthford/J. O'Brien(T)		Division/Group		
Training	J. Fakehany		Air Operations Branch		Director: K. Beinschroth
HRSP	A. Alvarez		Air Support Group Supervisor		D. Fulks(T)
ARA	J. Webster		Air Tactical Group Supervisor		
6. Logistics Section			Siskiyou County Helibase Manager D. Cobb		
Chief	S. Ashbach/S. Irvine/D. Alicea/J. Fox(T)				
Supply Unit	M. Keck		8. Finance/Administration Section:		
Facilities Unit	A. Curley/E. Jensen(T)		Chief	R. Lang/L. Wilson/M. White/D. Dukart(V)	
Ground Support Unit	C. Syler/J. Lantello(T)		Time Unit	C. Scott/A. Van Atta	
Communications Unit	C. Perry		Procurement Unit	P. Wood/R. Smith/R. Kirtland(T)	
Medical Unit	B. Bennewate		Comp/Claims Unit	D. McClure	
Food Unit	S. Katanich		Cost Unit	E. Molina(T)	
Prepared By: Name:	B. Vergne/G. Ozard Position/Title:		PSC	Signature: 	
ICS 203	Date/Time:		7/12/2024 2300 hours		

FIRE WEATHER FORECAST

FORECAST NO. 8

NAME OF INCIDENT: Shelly

PREDICTION FOR: Saturday July 13, 2024

UNIT: Klamath National Forest

TIME AND DATE

SIGNED: Jonathan O'Brien/Julia E. Ruthford

FORECAST ISSUED: 1900 Friday 7/12/24

Jonathan O'Brien Julia Ruthford - (530) 440-4898

IMET (t)

IMET

WEATHER DISCUSSION: Upper level ridging will continue to bring hot, dry and unstable conditions, similar to Friday. Mid-level moisture will increase today, bringing potential for PyroCumulus to develop on top of the column if the fire produces enough heat. Taller cumulus build-ups are likely today. A continued onshore pressure gradient will bring breezy SW-NW ridge level and down-canyon winds this afternoon & evening, with similar wind patterns to recent days. **Isolated, fast moving dry thunderstorms are possible late tonight**, and poor overnight recoveries with warm temperatures are expected.

SATURDAY:

WEATHER: Hot, dry & unstable. Partly cloudy with afternoon cumulus build-ups along the Mtns. Isolated dry thunderstorms may be visible east and southeast of the fire, with no precipitation expected.

MAXIMUM TEMPERATURE: Highs ranging from low 90s along ridges to low 100s valleys.

MINIMUM RELATIVE HUMIDITY: 6-11% in valleys and 13-18% along ridges.

20 FOOT WINDS:

SW of the PCT – Up-slope winds of 3-5 mph developing late morning will become SW-NW up-canyon 7-12 mph early afternoon with gusts of 14-18 mph possible mid to late afternoon.

NE of the PCT – Up-slope winds of 2-4 mph becoming SE to NE up-canyon 4-7 mph early afternoon then reversing to SW to NW around 1400 and increasing to 12-15 mph with gusts to 20 mph late afternoon through the evening along ridges and down-canyon winds of 5 to 7 mph drainage bottoms.

Scott Valley – E-SE winds 3-5 mph in the morning becoming SW-W 5-7 mph around 1200 and increasing to 9-14 mph with gusts to 18 mph mid afternoon and into the evening.

STABILITY: Smoky valley inversions lifting by noon. Weaker S-SW transport flow today, but increased instability from mid-level moisture should still allow decent smoke clearing. Deep vertical mixing is likely mid to late afternoon with enhanced potential for column growth due to mid level moisture supporting PyroCumulus development.

CHANCE OF THUNDERSTORMS: 10%

SMOKE TRANSPORT WIND: E-SE 5 mph S-SW 10-15 mph

SATURDAY NIGHT:

WEATHER: Warm and dry with strong mid slope thermal belts and poor RH recoveries. **Isolated and fast moving dry thunderstorms are possible after 0200. Any rainfall less than a tenth of an inch.**

MINIMUM TEMPERATURE: Mid 70s along slopes & ridges and mid 60s to low 70s in valleys.

MAXIMUM RELATIVE HUMIDITY: Around 20-26% slopes & ridges and 40-45% valleys.

20 FOOT WINDS: SW to NW 10-15 mph diminishing around 2100 then becoming N-NE 5-8 mph along ridges with downslope/down-valley 2-4 mph elsewhere.

STABILITY: Some smoke should settle into valleys including Scott Valley, but possibly less than prior nights.

CHANCE OF THUNDERSTORMS: 25%

SMOKE TRANSPORT WIND: S-SW 10 mph to light NE-SE.

SUNDAY: *FIRE WEATHER WATCH IN EFFECT 11AM-9PM ***** Remaining hot, though highs should be a little cooler, ranging from upper 80s along ridges to near 100 in valleys. Min RHs near 20% with poor to fair overnight recoveries around 25-35% along slopes and ridges, and 45-55% in valleys. Terrain driven up-slope and up-canyon winds continue with NW down-canyon winds of 10-15 mph gusting to 20 mph late afternoon into the evening. Isolated to scattered dry thunderstorms possible both morning and afternoon/evening.

OUTLOOK FOR MONDAY AND TUESDAY: There is a slight chance for a final round of isolated thunderstorm activity Monday afternoon. Otherwise, troughing to the northwest and ridging to the east will bring similar onshore pressure gradients with breezy SW to NW afternoon & evening winds along ridges and through channeled terrain, with no major changes in wind versus recent days. There will be a couple degrees of cooling, and some moderation of RH. Min RHs will be in the 17-27% range and overnight recoveries will remain poor to at best fair along slopes and ridges, but overall not as dry as the current period.

Please email weather observations to julia.ruthford@usda.gov or text them to 530-440-4898. Thanks!

FIRE BEHAVIOR FORECAST

FORECAST NUMBER: 08	TYPE OF FIRE: Wildfire
FIRE NAME: Shelly	OPERATIONAL PERIOD: 07/13 Day/Night
DATE ISSUED: July 12, 2024	TIME ISSUED: 1830
UNIT: CA-KNF	SIGNED: /s/ Patrick Doyle, FBAN 530-310-3552

WEATHER SUMMARY (See Fire Wx Forecast) "Fire Weather Watch"

TOPOGRAPHY: Elevations: 3900'-6,700' **Slopes:** 0%-100+% (0°-68°degrees)

<p>FUELS: Key Fuel Models, Fuel Moistures, FDR</p> <table border="1" style="width: 100%; border-collapse: collapse;"> <tr> <td style="width: 25%;">Grass/Shrub</td> <td style="width: 25%;">GS2</td> <td rowspan="6" style="width: 50%; vertical-align: top;"> <p>Forecasted PSA04: NFDR (Y) Percentile ERC: 64 (up 2) 99th BI: 44 (up 2) 98th</p> <p>*Note: FM %s in left column have been adjusted relative to Blue Ridge values.</p> </td> </tr> <tr> <td>Timber</td> <td>TU5</td> </tr> <tr> <td>FDPM (1hr)</td> <td>4 % NC*</td> </tr> <tr> <td>10-hr (%)</td> <td>5 % NC*</td> </tr> <tr> <td>100-hr (%)</td> <td>6 % NC*</td> </tr> <tr> <td>1000-hr(%)</td> <td><10 %*</td> </tr> <tr> <td>Live Fuels (Seasonal grasses)</td> <td>¾ to fully cured</td> <td></td> </tr> </table> <p style="font-size: small;">Blue Ridge – KNF (40203) / Predictive Service Area: NC04 - Northwestern Mtn. NC=No change, ▲up, ▼down</p>	Grass/Shrub	GS2	<p>Forecasted PSA04: NFDR (Y) Percentile ERC: 64 (up 2) 99th BI: 44 (up 2) 98th</p> <p>*Note: FM %s in left column have been adjusted relative to Blue Ridge values.</p>	Timber	TU5	FDPM (1hr)	4 % NC*	10-hr (%)	5 % NC*	100-hr (%)	6 % NC*	1000-hr(%)	<10 %*	Live Fuels (Seasonal grasses)	¾ to fully cured		<p>Fire Behavior (for new starts or unburned areas)</p> <p>Probability of Ignition: 92% Unshaded / 76% Shaded Spotting Distance: up to 0.5 mile (short range) Values below use 40% slope and assume upslope spread.</p> <table border="1" style="width: 100%; border-collapse: collapse;"> <thead> <tr> <th rowspan="2">Fuel Model</th> <th colspan="2">Day</th> <th colspan="2">Night</th> </tr> <tr> <th>FL (Ft.)</th> <th>ROS (Ch/Hr)</th> <th>Fuel Model</th> <th>FL (Ft.)</th> <th>ROS (Ch/Hr)</th> </tr> </thead> <tbody> <tr> <td>Grass/Shrub</td> <td>5-21</td> <td>23-39</td> <td>GS2</td> <td>1-17</td> <td>1-39</td> </tr> <tr> <td>Timber</td> <td>1-10</td> <td>1-16</td> <td>TU5</td> <td>1-10</td> <td>1-16</td> </tr> </tbody> </table> <p>Live fuel moistures in shrubs and trees, having passed green-up phase.</p>	Fuel Model	Day		Night		FL (Ft.)	ROS (Ch/Hr)	Fuel Model	FL (Ft.)	ROS (Ch/Hr)	Grass/Shrub	5-21	23-39	GS2	1-17	1-39	Timber	1-10	1-16	TU5	1-10	1-16
Grass/Shrub	GS2	<p>Forecasted PSA04: NFDR (Y) Percentile ERC: 64 (up 2) 99th BI: 44 (up 2) 98th</p> <p>*Note: FM %s in left column have been adjusted relative to Blue Ridge values.</p>																																					
Timber	TU5																																						
FDPM (1hr)	4 % NC*																																						
10-hr (%)	5 % NC*																																						
100-hr (%)	6 % NC*																																						
1000-hr(%)	<10 %*																																						
Live Fuels (Seasonal grasses)	¾ to fully cured																																						
Fuel Model	Day		Night																																				
	FL (Ft.)	ROS (Ch/Hr)	Fuel Model	FL (Ft.)	ROS (Ch/Hr)																																		
Grass/Shrub	5-21	23-39	GS2	1-17	1-39																																		
Timber	1-10	1-16	TU5	1-10	1-16																																		

FIRE BEHAVIOR

GENERAL:

- Another critical fire day. Very active fire or potential, similar to yesterday, but little dryer and windier conditions in the afternoon. Just like yesterday in the morning-- primarily diurnal; with transition in the afternoon to a SW to NW ridge-level influence until late evening.
- Fuels are very dry and receptive. Concern is for torching, spotting, or slope-reversals that can lead to uphill runs, torching, more spotting or crown runs. In addition, potential for rapid rates of spread for those areas where fire is in alignment with slope, fuels, and wind.
- Very low Rh's at above 6000' and thermal belts will be most active overnight, and first to come into play during daytime burn period.
- Watch out for when the smoke inversion breaks. If it does expect fire activity increase with potential for extreme fire behavior and spread to follow well into the evening. Until smoke inversion lifts or breaks, it will likely keep a lid on the fire, even though it will still be active.

SPECIFIC:

DIVS A, B, C, D, E, F, G: Expect fire behavior to remain active in area NW of Shelly Lake. Continuing to spread laterally and making uphill runs over the PCT into the Upper Kidder drainage. Fire is established in Upper Kidder. Active fire growth on the east & west flanks of the fire in Kidder Creek drainage and spots/slop-over in upper Mill Creek. Potential for very active fire behavior in the Patterson Creek drainage, where it spotted yesterday. Fire will spread thru active surface spread, backing, flanking, with occasional single- and group- tree torching and spotting.

DIVS T: Areas below 4-5000' inversion layer, fire activity will be moderated by smoke inversion and sparse fuels from the 2017 Wallow fire. Fire spread will be dictated by fuels concentration, connectivity and thru spotting or roll-out into receptive fuels.

AIR OPERATIONS:

Inversion in the morning, air operations impacted by smoke.

Sunrise: 5:50am, Sunset: 8:44pm, Daylength: 14 hours, 54 minutes, 30 seconds (-1:20min)

SAFETY:

Snags and fire weakened trees are one of the biggest hazards out there. Survey work areas for overhead hazards and mitigate them by having them removed or use flagging to keep people well clear of area.



SAFETY MESSAGE



Fire fighter safety comes first on every fire, every time

We are **ALL** accountable for **SAFE** behaviors
For Day/Night Operations: **July 13, 2024**

Major Hazards and Risks:

➤ **Branch X:**

- Aggressive fire behavior
- Indirect and direct line construction
- Structure protection

- Very steep and rocky terrain
- Night operations
- Hwy 3 public traffic

➤ **Branch XX:**

- Aggressive fire behavior
- Heavy snap patches
- Extremely steep and rocky terrain

- Heavy use of aircraft
- Heavy equipment indirect line
- Working in very remote locations

Working with Heavy Equipment

- When working around heavy equipment, stay at least 100 feet in front and 50 feet behind the equipment. In timber, distances should be increased to 2 1/2 times the canopy height.
- No one but the operator should ride on the equipment.
- Never approach equipment until you have eye contact with the operator, all implements have been lowered to the ground, and equipment is idled down.
- Avoid working downhill from equipment where rolling material could jeopardize your safety.
- Establish visual and radio communication methods prior to engaging.
- Communicate all hazards to the operator (spot fires, firing operations, and obstacles).
- Equipment operators have difficulty seeing ground personnel; take responsibility for your safety and all those around you.



Bias For Action

In a high-risk environment, freelancing is a dangerous and unpredictable element, causing more harm than good. Ultimately, leaders are always accountable for their actions.

- A bias for action acknowledges wildfire as an environment where events do not always go according to plan.
- At times during an incident, one person may be the only individual to see what needs to be done and to make it happen.
- Time may not permit gathering all of the information that one might like to have; if you wait until you have all the facts to be 100% sure of your decision, it will almost always be too late.

In these time-critical situations, fire leaders use judgment, act within the intent of their leaders, work in unison with others, develop and communicate a plan, then inform superiors of actions as soon as safely possible.

On a chaotic and rapidly-developing wildfire, one person taking the initiative can make all the difference in taking advantage of an opportunity. Being hesitant, risk-averse, or indecisive can expose firefighters to greater long-term risks and translate into a waste of time, opportunity, energy, and money.



ASSIGNMENT LIST (ICS 204 WF)

CONTROLLED UNCLASSIFIED
INFORMATION//BASIC

1. Incident Name: <p style="text-align: center; font-size: 1.2em;">SHELLY</p>	2. Operational Period: Date From: 07/13/24 Date To: 07/14/24 Time From: 0700 Time To: 0700	3. Branch Division <p style="text-align: center; font-size: 1.5em;">X A</p>
4. Operations Personnel:		Page 1 of 1 Alpha

Operations Section Chief: J. Owings/S. Lauderdale/J. Flores(T) Branch Director: J. Walton (12)/J. Vickers (T) Division/Group Supervisor: G. Lowdermilk/S. Rushing (T)	Night Ops: K.Bohall/R. Szczepanek(T) Branch Safety: Air Attack:
--	--

5. Resources Assigned:	** Resources Below in Bold are 12 Hour **							
Resource Identifier	ALS	LWD	Leader	Personnel	Request #	Hours	Reporting Location	
HC1 TALLAC		7/14	Betty	19	C-3	0700-1900	Etna ICP	
HC2IA SHASTA LAKE		7/16	Bogdan	22	C-2	0700-1900	Etna ICP	
S/T ENG3 KNF 3600C		7/20	Leckness	29	E-227	0700-1900	Etna ICP	
DOZ2 DEAN SMILEY		7/21	Smiley	2	E-81	0700-1900	Etna ICP	
FMOD HOMELAND		7/21	Ingersoll	2	O-46	0700-1900	Etna ICP	
FMOD WEST COAST CUTTING 1		7/21	Ancel	2	O-157	0700-1900	Etna ICP	
FMOD RED FLAG FIRE PROT.		7/21	Smith	2	O-159	0700-1900	Etna ICP	
FMOD RED FLAG		7/22	Fullerton	2	O-186	0700-1900	Etna ICP	
TFLD HAUPT		7/19	Haupt	1	O-50	0700-1900	Etna ICP	
SOFR BRYANT		7/22	Bryant	1	O-147	0700-1900	Etna ICP	
REMS 1	X	7/19	Walker	4	O-54	0700-1900	Etna ICP	
EMPF OWEN	X	7/19	Bryan	1	O-92	0700-1900	Etna ICP	
EMPF BANKS	X	7/23	Banks	1	O-202	0700-1900	Etna ICP	
EMPF SELLERS	X	7/23	Sellers	1	O-268	0700-1900	Etna ICP	
EMTF(T) NICHOLS		7/20	Nichols	1	O-87	0700-1900	Etna ICP	
REAF STEINWACHS		7/20	Steinwachs	1	O-178	0700-1900	Etna ICP	
REAF DIETZLER			Dietzler	1		0700-1900	Etna ICP	

6. Work Assignments:
Construct direct control line from HS7 along the ridge that runs towards the Campbell and Cliff Lakes to limit northern fire progression. Identify potential indirect lines to be utilized as secondary control lines.

7. Special Instructions:
Identify potential drop points, landing zones, sling site and spike camp locations.
24-hour resources contact Night Ops directly for direction after 1900.

8. Communications

Name	Ch	Function	Rx Freq	Rx Tone	Tx Freq	Tx Tone	Mode	Notes
NIFC C10	2	COMMAND	170.4125	(T3) 131.8	165.9625	(T3) 131.8	A	Quartz Lookout
CDF T14	P3.5	TACTICAL	159.3075	(T16) 192.8	159.3075	(T16) 192.8	A	
A/G TAC	14	A/G TAC	168.3750	0.0	168.3750	0.0	A	Overhead use only
CALCORD	15	TACTICAL	156.0750	(T6) 156.7	156.0750	(T6) 156.7	A	
AIRGUARD	16	A/G	168.6250	0.0	168.6250	(T1) 110.9	A	

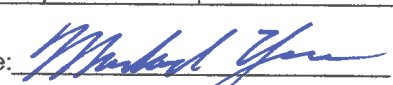
9. Prepared by: Name: M. Yeun/S. Frank(T)/T.Hullquist(T) RESL

Signature:

ICS 204 Date/Time: 7/12/2024 2200 Personnel Count: 92

ASSIGNMENT LIST (ICS 204 WF)

CONTROLLED UNCLASSIFIED
INFORMATION//BASIC

1. Incident Name: SHELLY		2. Operational Period: Date From: 07/13/24 Date To: 07/14/24 Time From: 0700 Time To: 0700				3. Branch Division X B			
						Page 1 of 2 Bravo			
4. Operations Personnel: Operations Section Chief: J. Owings/S. Lauderdale/J. Flores(T) Branch Director: J. Walton (12)/J. Vickers (T) Division/Group Supervisor: C. Markey(12)/J. Rogers(T)				Night Ops: K.Bohall/R. Szczepanek(T) Branch Safety: Air Attack:					
5. Resources Assigned:		** Resources Below in Bold are 12 Hour **							
Resource Identifier	ALS	LWD	Leader	Personnel	Request #	Hours	Reporting Location		
STC MEU 9111C			DAVIS, SCOTT	18 +/-	E-20016	0700-0700	DP 9		
STC TUU 9411C			NAGAL, CURTIS	18 +/-	E-20265	0700-0700	DP 9		
STC TBD						0700-0700	DP 9		
STG MEU 9113G (FF1)			MCNULTY, JAY	33 +/-	C-20001	0700-0700	DP 9		
STG LMU 9220G (FF1)			TENNYSON, GREG	37	C-20003	0700-0700	DP 9		
STG TBD						0700-0700	DP 9		
STL LNU 9142L			MADDOCKS, JEFF		E-20009	0700-0700	DP 9		
STL TGU 9250L			WILBANKS, CLIFF	7	E-20008	0700-0700	DP 9		
DOZ PVT E-20059 BLACK			WILSON, THOMAS	2	E-20059	0700-0700	DP 9		
DOZ PVT E-20063 LENA			LOWREY, PAUL		E-20063	0700-0700	DP 9		
DOZ PVT E-20076 R&H			SEABOURN, JERRY	2	E-20076	0700-0700	DP 9		
DOZ PVT E-20077			ARCHIBALD, DAKOTA		E-20077	0700-0700	DP 9		
DOZ PVT E-20111 - TOM			MARCUZ, JACK		E-20111	0700-0700	DP 9		
DOZ TBD						0700-0700	DP 9		
W/T PVT E-20046 - HURL			HURLIMANN, FRANK		E-20046	0700-0700	DP 9		
W/T PVT E-20050 - FIVE			BENNETT, ASA		E-20050	0700-0700	DP 9		
W/T PVT E-20195 - CULP					E-20195	0700-0700	DP 9		
W/T PVT E-20196 - BLACK					E-20196	0700-0700	DP 9		
6. Work Assignments: Construct direct line. Identify and construct primary control line. Identify and construct alternate control line.									
7. Special Instructions: DP9 located at Mill Creek Road and Emigrant Creek Road.									
8. Communications									
Name	Ch	Function	Rx Freq	Rx Tone	Tx Freq	Tx Tone	Mode	Notes	
NIFC C10	2	COMMAND	170.4125	(T3) 131.8	165.9625	(T3) 131.8	A	Quartz Lookout	
CDF T15	P3.6	TACTICAL	151.1825	(T16) 192.8	151.1825	(T16) 192.8	A		
A/G TAC	14	A/G TAC	168.3750	0.0	168.3750	0.0	A	Overhead use only	
CALCORD	15	TACTICAL	156.0750	(T6) 156.7	156.0750	(T6) 156.7	A		
AIRGUARD	16	A/G	168.6250	0.0	168.6250	(T1) 110.9	A		
9. Prepared by: Name:		M. Yeun/S. Frank(T)/T.Hullquist(T)			RESL			Signature: 	
ICS 204		Date/Time: 7/12/2024 2200			Personnel Count: 117				

ASSIGNMENT LIST (ICS 204 WF)

CONTROLLED UNCLASSIFIED
INFORMATION//BASIC

1. Incident Name: SHELLY	2. Operational Period: Date From: 07/13/24 Date To: 07/14/24 Time From: 0700 Time To: 0700	3. Branch Division X B
4. Operations Personnel:		Page 2 of 2 Bravo

Operations Section Chief: **J. Owings/S. Lauderdale/J. Flores(T)** Night Ops: **K.Bohall/R. Szczepanek(T)**
 Branch Director: **J. Walton (12)/J. Vickers (T)** Branch Safety:
 Division/Group Supervisor: **C. Markey(12)/J. Rogers(T)** Air Attack:

5. Resources Assigned:		** Resources Below in Bold are 12 Hour **						
Resource Identifier	ALS	LWD	Leader	Personnel	Request #	Hours	Reporting Location	
W/T TBD						0700-0700	Mill Cr Rd X Emigrant Cr Rd	
W/T TBD						0700-0700	Mill Cr Rd X Emigrant Cr Rd	
GDR PVT E-20272 - DARRAH					E-20272	0700-1900	Mill Cr Rd X Emigrant Cr Rd	
FALM PVT O-20147 - BUNDY'S					O-20147	0700-1900	Mill Cr Rd X Emigrant Cr Rd	
HEQB ADAMS			ADAMS, TRAVIS		O-20138	0700-1900	Mill Cr Rd X Emigrant Cr Rd	
EMPF SCHAENBORN	X	7/23	Schaenborn	1	O-20168	0700-0700	Mill Cr Rd X Emigrant Cr Rd	
EMPF PETERS	X	7/23	Peters	1	O-20176	0700-0700	Mill Cr Rd X Emigrant Cr Rd	
EMTF LOVEJOY		7/23	Lovejoy	1	O-20187	0700-0700	Mill Cr Rd X Emigrant Cr Rd	

6. Work Assignments:
 Construct direct line.
 Identify and construct primary control line.
 Identify and construct alternate control line.

7. Special Instructions:

8. Communications

Name	Ch	Function	Rx Freq	Rx Tone	Tx Freq	Tx Tone	Mode	Notes
NIFC C3	1	COMMAND	170.4250	(T3) 131.8	168.0750	(T3) 131.8	A	English Peak
CDF T15	P3.6	TACTICAL	151.1825	(T16) 192.8	151.1825	(T16) 192.8	A	
A/G TAC	14	A/G TAC	168.3750	0.0	168.3750	0.0	A	Overhead use only
CALCORD	15	TACTICAL	156.0750	(T6) 156.7	156.0750	(T6) 156.7	A	
AIRGUARD	16	A/G	168.6250	0.0	168.6250	(T1) 110.9	A	

9. Prepared by: Name: M. Yeun/S. Frank(T)/T.Hullquist(T) RESL
 Signature:

ICS 204 Date/Time: 7/12/2024 2200 Personnel Count: 3

ASSIGNMENT LIST (ICS 204 WF)

CONTROLLED UNCLASSIFIED
INFORMATION//BASIC

1. Incident Name: SHELLY	2. Operational Period: Date From: 07/13/24 Date To: 07/14/24 Time From: 0700 Time To: 0700	3. Branch Division X C
---	---	---

4. Operations Personnel:	Page 1 of 3 Charlie
---------------------------------	-----------------------------------

Operations Section Chief: J. Owings/S. Lauderdale/J. Flores(T)	Night Ops: K.Bohall/R. Szczepanek(T)
Branch Director: J. Walton (12)/J. Vickers (T)	Branch Safety:
Division/Group Supervisor: J. Jones	Air Attack:

5. Resources Assigned: **** Resources Below in Bold are 12 Hour ****

Resource Identifier	ALS	LWD	Leader	Personnel	Request #	Hours	Reporting Location
STC HUU 9122C			MCLAUGHLIN, RON	18 +/-	E-20015	0700-0700	DP8
STC CZU 9171C			BITHER, ERIC	17	E-20052	0700-0700	DP8
STC XED 4075C			HALL, DUSTIN	20	E-20053	0700-1900	DP8
STC XTB 4226C			MANNING, JAY	18 +/-	E-20054	0700-0700	DP8
STC XSC 2311C			TOMASETTI, ART	22	E-20315	0700-0700	DP8
STF TBD						0700-0700	DP8
ENG6 BNP E675		7/21	ROGGENKAM, AARON	4	E-64	0700-1900	DP8
STG SKU 9262G (FF1)				33 +/-	C-41	0700-0700	DP8
STG TGU 9274G (CDCR)			EWANDOWSKI, STEVEN	33 +/-	C-10	0700-0700	DP8
STG TBD						0700-0700	DP8
STG TBD						0700-0700	DP8
HC1 TRINITY IHC		7/21	Dias	22	C-25	0700-1900	DP8
HC1 KLAMATH IHC		7/21	Ownsbey	23	C-28	0700-1900	DP8
STL LMU 9222L			NEEDLER, TRAVIS	7	E-20023	0700-0700	DP8
DOZ SKU 2640			REUSZE, MICHAEL		E-20235	0700-0700	DP8
DOZ SKU 2643			HEAD, ERIC		E-20232	0700-0700	DP8
DOZ PVT E-20029 BACK			OWEN, LARRY		E-20029	0700-0700	DP8
DOZ PVT E-20030 WD			WELCH, RYAN	2	E-20030	0700-0700	DP8
DOZ PVT E-20072 MATAN			MELENDEZ, ANTONIO		E-20072	0700-0700	DP8

6. Work Assignments:
Construct Direct Line.
Identify and construct primary control line.
Identify and construct Contingency Line.

7. Special Instructions:
Only use water from metered hydrant in Fort Jones unless conducting direct suppression around residential areas.
DP8 located at Meyers Road and North Kidder Creek Road.

8. Communications

Name	Ch	Function	Rx Freq	Rx Tone	Tx Freq	Tx Tone	Mode	Notes
NIFC C10	2	COMMAND	170.4125	(T3) 131.8	165.9625	(T3) 131.8	A	Quartz Lookout
CDF T24	P3.7	TACTICAL	151.3325	(T16) 192.8	151.3325	(T16) 192.8	A	
AIRGUARD	16	A/G	168.6250	0.0	168.6250	(T1) 110.9	A	Emergency Use Only
CALCORD	15	TACTICAL	156.0750	(T6) 156.7	156.0750	(T6) 156.7	A	
AIRGUARD	16	A/G	168.6250	0.0	168.6250	(T1) 110.9	A	

9. Prepared by: Name: M. Yeun/S. Frank(T)/T.Hullquist(T) RESL Signature:

ICS 204 Date/Time: 7/12/2024 2200 Personnel Count: 219

ASSIGNMENT LIST (ICS 204 WF)

CONTROLLED UNCLASSIFIED
INFORMATION//BASIC

1. Incident Name:	2. Operational Period:	3. Branch	Division
SHELLY	Date From: 07/13/24 Date To: 07/14/24 Time From: 0700 Time To: 0700	X	C
4. Operations Personnel:		Page 2 of 3	Charlie

Operations Section Chief: J. Owings/S. Lauderdale/J. Flores(T) Branch Director: J. Walton (12)/J. Vickers (T) Division/Group Supervisor: J. Jones	Night Ops: K.Bohall/R. Szczepanek(T) Branch Safety: Air Attack:
--	--

5. Resources Assigned:		** Resources Below in Bold are 12 Hour **					
Resource Identifier	ALS	LWD	Leader	Personnel	Request #	Hours	Reporting Location
DOZ PVT E-20075 EASLEY			EASLEY, KENNY	2	E-20075	0700-0700	DP8
DOZ PVT E-20078 ADAMS					E-20078	0700-0700	DP8
DOZ PVT E-20079 SPRAT			SPRATT, ERIC		E-20079	0700-0700	DP8
DOZ PVT E-20080 HIGH			HENSON, MIKE	2	E-20080	0700-0700	DP8
DOZ PVT E-20081 INDEP			PACKWOOD, SCOTT		E-20081	0700-0700	DP8
DOZ PVT E-20110 - ACT			GOODEN, MIKE		E-20110	0700-0700	DP8
W/T PVT E-20010			ZUARBIER, JOHN		E-20010	0700-0700	DP8
W/T PVT E-20011 - BURKE			KELLY, KEN		E-20011	0700-0700	DP8
W/T PVT E-20012 - HD			HOWELL, DERRIN		E-20012	0700-0700	DP8
W/T PVT E-20043 - JOHN			JOHNSON, MARK		E-20043	0700-0700	DP8
W/T PVT E-20044 - QUART			SELVAGE, SCOTT		E-20044	0700-0700	DP8
W/T PVT E-20045 - HURL			HURLIMANN, FRANK		E-20045	0700-0700	DP8
W/T PVT E-20248 - ALAN			NYBERG, TYLER	2	E-20248	0700-0700	DP8
W/T TBD						0700-0700	DP8
W/T TBD						0700-0700	DP8
FEL PVT E-20121 - ALL			COE, RYAN		E-20121	0700-1900	DP8
FELB TBD						0700-0700	DP8
FELB TBD						0700-0700	DP8

6. Work Assignments:
 Construct Direct Line.
 Identify and construct primary control line.
 Identify and construct Contingency Line.


7. Special Instructions:
 Only use water from metered hydrant in Fort Jones unless conducting direct suppression around residential areas.
 DP8 located at Meyers Road and North Kidder Creek Road.

8. Communications								
Name	Ch	Function	Rx Freq	Rx Tone	Tx Freq	Tx Tone	Mode	Notes
NIFC C10	2	COMMAND	170.4125	(T3) 131.8	165.9625	(T3) 131.8	A	Quartz Lookout
CDF T24	P3.7	TACTICAL	151.3325	(T16) 192.8	151.3325	(T16) 192.8	A	
AIRGUARD	16	A/G	168.6250	0.0	168.6250	(T1) 110.9	A	Emergency Use Only
CALCORD	15	TACTICAL	156.0750	(T6) 156.7	156.0750	(T6) 156.7	A	
AIRGUARD	16	A/G	168.6250	0.0	168.6250	(T1) 110.9	A	

9. Prepared by: Name:	M. Yeun/S. Frank(T)/T.Hullquist(T)	RESL	Signature:
ICS 204	Date/Time: 7/12/2024 2200	Personnel Count: 6	

ASSIGNMENT LIST (ICS 204 WF)

CONTROLLED UNCLASSIFIED
INFORMATION//BASIC

1. Incident Name: SHELLY		2. Operational Period: Date From: 07/13/24 Date To: 07/14/24 Time From: 0700 Time To: 0700				3. Branch X		Division C	
4. Operations Personnel: Operations Section Chief: J. Owings/S. Lauderdale/J. Flores(T) Branch Director: J. Walton (12)/J. Vickers (T) Division/Group Supervisor: J. Jones						Night Ops: K.Bohall/R. Szczepanek(T) Branch Safety: Air Attack:			
5. Resources Assigned:		** Resources Below in Bold are 12 Hour **							
Resource Identifier	ALS	LWD	Leader	Personnel	Request #	Hours	Reporting Location		
FELB TBD						0700-0700	DP8		
GDR PVT E-20273 - OILERS			WHITE, JAMES	1	E-20273	0700-1900	DP8		
GDR PVTE-20274 - COTTONWOOD			MCDOW, SHANE		E-20274	0700-1900	DP8		
MAST PVT E-20236 WRIGHT			WRIGHT, JEREMY	1	E-20236	0700-1900	DP8		
EXC PVT E-20259 - GREG			GREGORY, STEVE	1	E-20259	0700-1900	DP8		
MAST PVT E-20260 - EVANS			HUDMAN, JAMES		E-20260	0700-1900	DP8		
EXC PVT E-20261 - LEPAGE			SMITH, WILL	1	E-20261	0700-1900	DP8		
EXC PVT E-20262 - HOME			FARRELL, CONOR		E-20262	0700-1900	DP8		
SKD PVT E-20115 - ALL PHASES			PEPPLE, JUSTIN		E-20115	0700-1900	DP8		
SKD TBD						0700-0700	DP8		
FALM PVT O-20145 - LIB			SCHROEDER, BRANDON		O-20145	0700-1900	DP8		
FALM PVT O-20146 - LONE PIN					O-20146	0700-1900	DP8		
FALM PVT O-20220 - NORTH			LEE, MIKE	2	O-20220	0700-1900	DP8		
HEQB BRISTOL			BRISTOL, MARC		O-20037	0700-0700	DP8		
HEQB BANEGAS			BANEGAS, HANK CARL		O-20139	0700-0700	DP8		
HEQB TBD						0700-0700	DP8		
AMBO 20	X		Johansen	2	E-20221	0700-1900	DP8		
6. Work Assignments: Construct Direct Line. Identify and construct primary control line. Identify and construct Contingency Line.									
7. Special Instructions: Only use water from metered hydrant in Fort Jones unless conducting direct suppression around residential areas. DP8 located at Meyers Road and North Kidder Creek Road.									
8. Communications									
Name	Ch	Function	Rx Freq	Rx Tone	Tx Freq	Tx Tone	Mode	Notes	
NIFC C10	2	COMMAND	170.4125	(T3) 131.8	165.9625	(T3) 131.8	A	Quartz Lookout	
CDF T24	P3.7	TACTICAL	151.3325	(T16) 192.8	151.3325	(T16) 192.8	A		
AIRGUARD	16	A/G	168.6250	0.0	168.6250	(T1) 110.9	A	Emergency Use Only	
CALCORD	15	TACTICAL	156.0750	(T6) 156.7	156.0750	(T6) 156.7	A		
AIRGUARD	16	A/G	168.6250	0.0	168.6250	(T1) 110.9	A		
9. Prepared by: Name: M. Yeun/S. Frank(T)/T.Hullquist(T) RESL									
						Signature: 			
ICS 204		Date/Time: 7/12/2024 2200				Personnel Count: 8			

ASSIGNMENT LIST (ICS 204 WF)

CONTROLLED UNCLASSIFIED
INFORMATION//BASIC

1. Incident Name: SHELLY	2. Operational Period: Date From: 07/13/24 Date To: 07/14/24 Time From: 0700 Time To: 0700	3. Branch Division X D Page 1 of 2 Delta
---	---	---


4. Operations Personnel:	
Operations Section Chief: J. Owings/S. Lauderdale/J. Flores(T) Branch Director: J. Walton (12)/J. Vickers (T) Division/Group Supervisor: J. Duncan, A. Cholico(12)(T)	Night Ops: K.Bohall/R. Szczepanek(T) Branch Safety: Air Attack:

5. Resources Assigned:		** Resources Below in Bold are 12 Hour **					
Resource Identifier	ALS	LWD	Leader	Personnel	Request #	Hours	Reporting Location
STC SHU 9243C			PESCATORE, ANTHONY	18 +/-	E-20017	0700-0700	DP7
STC XYO 4278C			DUNN, STEVE	21	E-20180	0700-0700	DP7
STC 4807C		7/23	SCOFIELD, JASON	21	E-258	0700-1900	DP7
ENG3 S. ARKANSAS FD		7/23	Barrera	4	E-120	0700-1900	DP7
STF 2861F		1/19	LAX, CHUCK		E-255	0700-1900	DP7
STG LMU 9226G (CDCR)			CRAWFORD, BRIAN	32	C-20006	0700-0700	DP7
STG LMU 9227G (CDCR)			ETTER, KEITH	33 +/-	C-20013	0700-0700	DP7
STG TBD						0700-0700	DP7
STG TBD						0700-0700	DP7
DOZ PVT E-20060 MCGOW			EPPERSON, JERRY		E-20060	0700-0700	DP7
DOZ PVT E-20061 LENA			CARLTON, ROD		E-20061	0700-0700	DP7
DOZ PVT E-20062 LENA			MONTZ, JOHN	2	E-20062	0700-0700	DP7
DOZ PVT E-20065 MARIAH					E-20065	0700-0700	DP7
DOZ PVT E-20073 SKINNE			SKINNER, COLE	2	E-20073	0700-0700	DP7
DOZ PVT E-20074 ERICK			ERICKSON, GENE		E-20074	0700-0700	DP7
W/T PVT E-20088 - T & S					E-20088	0700-0700	DP7
W/T PVT E-20192 - CON			SCHEEPS, STEVEN	2	E-20192	0700-0700	DP7
W/T PVT E-20193			RICH		E-20193	0700-0700	DP7

6. Work Assignments:
 Construct direct line.
 Identify and construct primary control line.
 Fall hazard trees that threaten control lines.
 Hold and improve control lines.

7. Special Instructions:
 Only use water from metered hydrant in Fort Jones unless conducting direct suppression around residential areas.
 DP7 located at South Kidder Creek Road and HWY 3.

8. Communications								
Name	Ch	Function	Rx Freq	Rx Tone	Tx Freq	Tx Tone	Mode	Notes
NIFC C10	2	COMMAND	170.4125	(T3) 131.8	165.9625	(T3) 131.8	A	Quartz Lookout
CDF T35	P3.8	TACTICAL	151.4675	(T17) 67.0	151.4675	(T17) 67.0	A	
A/G TAC	14	A/G TAC	168.3750	0.0	168.3750	0.0	A	Overhead use only
CALCORD	15	TACTICAL	156.0750	(T6) 156.7	156.0750	(T6) 156.7	A	
AIRGUARD	16	A/G	168.6250	0.0	168.6250	(T1) 110.9	A	

9. Prepared by: Name: M. Yeun/S. Frank(T)/T.Hullquist(T) RESL
 Signature: 
ICS 204 Date/Time: 7/12/2024 2200 Personnel Count: 135

ASSIGNMENT LIST (ICS 204 WF)

CONTROLLED UNCLASSIFIED
INFORMATION//BASIC

1. Incident Name: SHELLY	2. Operational Period: Date From: 07/13/24 Date To: 07/14/24 Time From: 0700 Time To: 0700	3. Branch Division X D
---	---	---

4. Operations Personnel: Page 2 of 2 Delta

Operations Section Chief: J. Owings/S. Lauderdale/J. Flores(T)	Night Ops: K.Bohall/R. Szczepanek(T)
Branch Director: J. Walton (12)/J. Vickers (T)	Branch Safety:
Division/Group Supervisor: J. Duncan, A. Cholico(12)(T)	Air Attack:

5. Resources Assigned: **** Resources Below in Bold are 12 Hour ****

Resource Identifier	ALS	LWD	Leader	Personnel	Request #	Hours	Reporting Location
W/T PVT E-20198 - LENA			SPURLOCK, HANK		E-20198	0700-0700	DP7
W/T PVT E-20200 - FIRE			TROEDEL, BRIAN		E-20200	0700-0700	DP7
W/T PVT E-20245 - STOREY			STORY, LANE	2	E-20245	0700-0700	DP7
FALM PVT O-20223 - NORTH				2	O-20223	0700-1900	DP7
HEQB MATHESON			MATHESON, RYAN		O-20140	0700-0700	DP7
HEQB MINER			MINER, ROBERT		O-20194	0700-0700	DP7
SOF2 BARNHART		7/22	Barnhart	1	O-284	0700-1900	DP7
EMPF(T) HARTMAN	X	7/24	Hartman	1	O-20167	0700-1900	DP7
EMPF(T) PHELPS	X	7/25	Phelps	1	O-20175	0700-1900	DP7
EMTF HAWK		7/25	Hawk	1	O-20164	0700-1900	DP7
EMTF GARCIA	X	7/24	Garcia	1	O-20181	0700-1900	DP7

6. Work Assignments:
 Construct direct line.
 Identify and construct primary control line.
 Fall hazard trees that threaten control lines.
 Hold and improve control lines.

7. Special Instructions:
 Only use water from metered hydrant in Fort Jones unless conducting direct suppression around residential areas.
 DP7 located at South Kidder Creek Road and HWY 3.

8. Communications

Name	Ch	Function	Rx Freq	Rx Tone	Tx Freq	Tx Tone	Mode	Notes
NIFC C10	2	COMMAND	170.4125	(T3) 131.8	165.9625	(T3) 131.8	A	Quartz Lookout
CDF T35	P3.8	TACTICAL	151.4675	(T17) 67.0	151.4675	(T17) 67.0	A	
A/G TAC	14	A/G TAC	168.3750	0.0	168.3750	0.0	A	Overhead use only
CALCORD	15	TACTICAL	156.0750	(T6) 156.7	156.0750	(T6) 156.7	A	
AIRGUARD	16	A/G	168.6250	0.0	168.6250	(T1) 110.9	A	

9. Prepared by: Name: M. Yeun/S. Frank(T)/T.Hullquist(T) RESL Signature:

ICS 204 Date/Time: 7/12/2024 2200 Personnel Count: 9

ASSIGNMENT LIST (ICS 204 WF)

CONTROLLED UNCLASSIFIED
INFORMATION//BASIC

1. Incident Name: <p style="text-align: center; font-size: 1.2em;">SHELLY</p>	2. Operational Period: Date From: 07/13/24 Date To: 07/14/24 Time From: 0700 Time To: 0700	3. Branch Division <p style="text-align: center; font-size: 1.5em;">XX E</p> <p style="text-align: center;">Page 1 of 2 Echo</p>
--	---	--

4. Operations Personnel: Operations Section Chief: J. Owings/S. Lauderdale/J. Flores(T) Branch Director: T. Richter(12), M. Khazaal(T) Division/Group Supervisor: C. Martinelli, S. Pindell(12)	Night Ops: K.Bohall/R. Szczepanek(T) Branch Safety: Air Attack:
--	--

5. Resources Assigned:	** Resources Below in Bold are 12 Hour **							
Resource Identifier	ALS	LWD	Leader	Personnel	Request #	Hours	Reporting Location	
STC SKU 9260C			MAPES, KEITH	18 +/-	E-20014	0700-0700	DP6	
STC TBD						0700-0700	DP6	
STC TBD						0700-0700	DP6	
T/F XST 4202 (3,3,6,6,WT)			WILLIAMS, TRENT	18	E-20188	0700-1900	DP6	
STG SHU 9241G (FF1)			HAGAN, JEFFREY O	33 +/-	C-20007	0700-0700	DP6	
STG TBD						0700-0700	DP6	
CRW2 PVT C-20028 RJT			ARAGON, DAVID	20	C-20028	0700-2300	DP6	
CRW2 PVT C-20030 R&R			IVARRA, ROGELIO	20	C-20030	0700-2300	DP6	
CRW2 PVT C-20031 PACIFIC			ANDERSON, GEOFF	20	C-20031	0700-2300	DP6	
STL MEU 9118L			TAGLIO, KEN	7	E-20028	0700-0700	DP6	
DOZ PVT E-20022 JOHNSON			JOHNSON, TIM		E-20022	0700-0700	DP6	
DOZ PVT E-20031 DVBE			ZIMMERMAN, TUCKER		E-20031	0700-0700	DP6	
DOZ PVT E-20032 MATANDY			HARKNESS, MATT		E-20032	0700-0700	DP6	
DOZ PVT E-20058 BLACK			WUNSCH, ALEX	2	E-20058	0700-0700	DP6	
W/T PVT E-20013 - AMERI			MARTINEZ, RUBEN	2	E-20013	0700-0700	DP6	
W/T PVT E-20109 - TRINITY			TAYLOR, JOSHUA	2	E-20109	0700-0700	DP6	
W/T PVT E-20201 - DIAMOND					E-20201	0700-0700	DP6	
W/T PVT E-20238 - AMERICA			CHRISTENSON, REG	2	E-20238	0700-0700	DP6	
W/T PVT E-20243 - H2O			CUSALICH, NATHAN	2	E-20243	0700-0700	DP6	

6. Work Assignments:
 Contract direct line Section 15.
 Identify and construct primary control line from Whisky Butte to DP24.
 Fall hazard trees and trees that threaten control lines.

7. Special Instructions:

8. Communications

Name	Ch	Function	Rx Freq	Rx Tone	Tx Freq	Tx Tone	Mode	Notes
NIFC C11	3	COMMAND	170.6875	(T3) 131.8	166.5750	(T3) 131.8	A	Whiskey Butte
NIFC T1	5	TACTICAL	168.0500	(T3) 131.8	168.0500	(T3) 131.8	A	
CALCORD	15	TACTICAL	156.0750	(T6) 156.7	156.0750	(T6) 156.7	A	Medical Evac Tone 6
CALCORD	15	TACTICAL	156.0750	(T6) 156.7	156.0750	(T6) 156.7	A	
AIRGUARD	16	A/G	168.6250	0.0	168.6250	(T1) 110.9	A	

9. Prepared by: Name: M. Yeun/S. Frank(T)/T.Hullquist(T) RESL

Signature:

ICS 204	Date/Time: 7/12/2024 2200	Personnel Count: 144
----------------	---------------------------	----------------------

ASSIGNMENT LIST (ICS 204 WF)

CONTROLLED UNCLASSIFIED
INFORMATION//BASIC

1. Incident Name:	2. Operational Period:	3. Branch	Division
SHELLY	Date From: 07/13/24 Date To: 07/14/24 Time From: 0700 Time To: 0700	XX	E

4. Operations Personnel:		Page 2 of 2	Echo
Operations Section Chief: J. Owings/S. Lauderdale/J. Flores(T)		Night Ops: K.Bohall/R. Szczepanek(T)	
Branch Director: T. Richter(12), M. Khazaal(T)		Branch Safety:	
Division/Group Supervisor: C. Martinelli, S. Pindell(12)		Air Attack:	

5. Resources Assigned:		** Resources Below in Bold are 12 Hour **						
Resource Identifier	ALS	LWD	Leader	Personnel	Request #	Hours	Reporting Location	
W/T TBD						0700-0700	DP6	
FALM PVT O-20144 - CAMP					O-20144	0700-1900	DP6	
FALM PVT O-20222 - NORTH			CRAWFORD, NORMAN	2	O-20222	0700-1900	DP6	
HEQB SASSEN			SASSEN, TYLER		O-20036	0700-0700	DP6	
SOFR FORD			FORD, ROBERT D		O-20236	0700-0700	DP6	
REMS 9	X	7/24	Fitch	4	O-20193	0700-1900	DP6	
EMPF PERLSTEIN	X	7/23	Perlstein	1	O-20166	0700-1900	DP6	
EMTF JONES		7/23	Jones	1	O-20184	0700-1900	DP6	

6. Work Assignments:
 Contract direct line Section 15.
 Identify and construct primary control line from Whiskey Butte to DP24.
 Fall hazard trees and trees that threaten control lines.

7. Special Instructions:

8. Communications								
Name	Ch	Function	Rx Freq	Rx Tone	Tx Freq	Tx Tone	Mode	Notes
NIFC C11	3	COMMAND	170.6875	(T3) 131.8	166.5750	(T3) 131.8	A	Whiskey Butte
NIFC T1	5	TACTICAL	168.0500	(T3) 131.8	168.0500	(T3) 131.8	A	
CALCORD	15	TACTICAL	156.0750	(T6) 156.7	156.0750	(T6) 156.7	A	Medical Evac Tone 6
CALCORD	15	TACTICAL	156.0750	(T6) 156.7	156.0750	(T6) 156.7	A	
AIRGUARD	16	A/G	168.6250	0.0	168.6250	(T1) 110.9	A	

9. Prepared by: Name: M. Yeun/S. Frank(T)/T.Hullquist(T) RESL Signature: *M. Yeun*

ICS 204 Date/Time: 7/12/2024 2200 Personnel Count: 8

ASSIGNMENT LIST (ICS 204 WF)

CONTROLLED UNCLASSIFIED
INFORMATION//BASIC

1. Incident Name: <p style="text-align: center; font-size: 1.2em;">SHELLY</p>	2. Operational Period: Date From: 07/13/24 Date To: 07/14/24 Time From: 0700 Time To: 0700	3. Branch Division <p style="text-align: center; font-size: 1.5em;">XX F</p>
--	---	--

4. Operations Personnel:		Page 1 of 1 Foxtrot
Operations Section Chief: J. Owings/S. Lauderdale/J. Flores(T) Branch Director: T. Richter(12), M. Khazaal(T) Division/Group Supervisor: D. Helgeson/B. Boatman (T)	Night Ops: K.Bohall/R. Szczepanek(T) Branch Safety: Air Attack:	

5. Resources Assigned:		** Resources Below in Bold are 12 Hour **						
Resource Identifier	ALS	LWD	Leader	Personnel	Request #	Hours	Reporting Location	
HC1 MAD RIVER		7/18	Esquirel	21	C-13	0700-1900	Etna ICP	
HC2IA JACKSON IHC		7/15	Stone	21	C-23	0700-1900	Etna ICP	
STG LAC 1176G		7/22	Souder	29	C-46	0700-0700	Etna ICP	
STG LAC 1183G		7/22	Montoya	31	C-45	0700-0700	Etna ICP	
ENG3 KETCHUM E101		7/22	Lee	4	E-127	0700-1900	Etna ICP	
TFLD GERMAN		7/25	German	1	O-390	0700-1900	Etna ICP	
FMOD AFT		7/19	Smith	2	O-45	0700-1900	Etna ICP	
SOFR CIRONE		7/22	Cirone	1	O-210	0700-1900	Etna ICP	
REMS 6	X	7/23	Schall	4	O-250	0700-1900	Etna ICP	
EMPF GARCIA	X	7/22	Garcia	1	O-195	0700-1900	Etna ICP	
EMPF SCHROTH	X	7/23	Schroth	1	O-270	0700-1900	Etna ICP	
EMTF GENEVICZ		7/23	Genevicz	1	O-255	0700-1900	Etna ICP	
EMTF SIEMANN		7/22	Siemann	1	O-273	0700-1900	Etna ICP	

6. Work Assignments:
 Construct indirect control line from Whisky Butte to HS3 to limit southern fire progression.
 Construct indirect control line from E/F break to HS8 to be utilized as a secondary control line.
 Identify additional potential indirect lines to be utilized as secondary control lines.

7. Special Instructions:
 Only use water from metered hydrant in Fort Jones unless conducting direct suppression around residential area.
 Identify potential drop points, landing zones, sling site and spike camp locations.
 24-hour resources contact Night Ops directly for direction after 1900.

8. Communications

Name	Ch	Function	Rx Freq	Rx Tone	Tx Freq	Tx Tone	Mode	Notes
NIFC C11	3	COMMAND	170.6875	(T3) 131.8	166.5750	(T3) 131.8	A	Whiskey Butte
NIFC T2	6	TACTICAL	168.2000	(T3) 131.8	168.2000	(T3) 131.8	A	
A/G TAC	14	A/G TAC	168.3750	0.0	168.3750	0.0	A	Overhead use only
CALCORD	15	TACTICAL	156.0750	(T6) 156.7	156.0750	(T6) 156.7	A	
AIRGUARD	16	A/G	168.6250	0.0	168.6250	(T1) 110.9	A	

9. Prepared by: Name: M. Yeun/S. Frank(T)/T.Hullquist(T) RESL
 Signature:

ASSIGNMENT LIST (ICS 204 WF)

CONTROLLED UNCLASSIFIED
INFORMATION//BASIC

1. Incident Name: <p style="text-align: center; font-size: 1.2em;">SHELLY</p>	2. Operational Period: Date From: 07/13/24 Date To: 07/14/24 Time From: 0700 Time To: 0700	3. Branch Division <p style="text-align: center; font-size: 1.5em;">XX G</p>
4. Operations Personnel:		Page 1 of 2 Golf

Operations Section Chief: J. Owings/S. Lauderdale/J. Flores(T) Branch Director: T. Richter(12), M. Khazaal(T) Division/Group Supervisor: A. Luna/R. Flitt(T)	Night Ops: K.Bohall/R. Szczepanek(T) Branch Safety: Air Attack:
---	--

5. Resources Assigned:	** Resources Below in Bold are 12 Hour **							
Resource Identifier	ALS	LWD	Leader	Personnel	Request #	Hours	Reporting Location	
HC2IA MODOC		7/17	Hendricks	19	C-1	0700-1900	Whites Gulch	
HC2IA HAPPY CAMP 2		7/21	Goodwin	20	C-27	0700-1900	Whites Gulch	
ENG3 DURANGO		7/23	Kristiansen	5	E-118	0700-1900	Whites Gulch	
ENG3 ALPINE 7		7/22	Vigil	3	E-128	0700-1900	Whites Gulch	
ENG3 ALPINE 8		7/22	Nunez	3	E-129	0700-1900	Whites Gulch	
ENG3 J3 CONTRACTING 5		7/23	Tenaglia	3	E-132	0700-1900	Whites Gulch	
ENG6 FIRE SOLUTIONS		7/22	Mestrovic	3	E-94	0700-1900	Whites Gulch	
ENG6 ROCKY POINT		7/22	Soares	3	E-95	0700-1900	Whites Gulch	
ENG6 BLUFFDALE E694		7/22	Reglia	3	E-149	0700-1900	Whites Gulch	
WTT2 SHF 266		7/22	Eason	2	E-178	0700-1900	Whites Gulch	
WTS2 KENT JOHNSON		7/21	Brown	1	E-92	0700-1900	Whites Gulch	
DOZ2 BAR-G 2		7/21	Simonis	1	E-86	0700-1900	Whites Gulch	
DOZ2 JIM JOHNSON		7/22	Horne	2	E-214	0700-1900	Whites Gulch	
MAST HACKER		7/25	Babel	2	E-290	0700-1900	Whites Gulch	
HEQB GAILEY		7/22	Gailey	1	O-228	0700-1900	Whites Gulch	
HEQB(T) ROAM		7/22	Roam	1	O-244	0700-1900	Whites Gulch	
FMOD C&K WILDLAND 1		7/21	Schuyler	2	O-155	0700-1900	Whites Gulch	
FMOD C&K WILDLAND 2		7/21	Pederson	2	O-156	0700-1900	Whites Gulch	

6. Work Assignments:
Construct indirect control line from Sawyers Bar Rd north on Snoozer Ridge to the PCT to be utilized as a secondary control line.
Identify potential indirect control lines to limit southern and fire progression.

7. Special Instructions:
Backhaul trash and excess equipment to helibase daily.
Identify potential drop points, landing zones, sling site and spike camp locations.
24-hour resources contact Night Ops directly for direction after 1900.

8. Communications

Name	Ch	Function	Rx Freq	Rx Tone	Tx Freq	Tx Tone	Mode	Notes
NIFC C11	3	COMMAND	170.6875	(T3) 131.8	166.5750	(T3) 131.8	A	Whiskey Butte
NIFC T3	7	TACTICAL	168.6000	(T3) 131.8	168.6000	(T3) 131.8	A	
A/G TAC	14	A/G TAC	168.3750	0.0	168.3750	0.0	A	Overhead use only
CALCORD	15	TACTICAL	156.0750	(T6) 156.7	156.0750	(T6) 156.7	A	
AIRGUARD	16	A/G	168.6250	0.0	168.6250	(T1) 110.9	A	

9. Prepared by: Name: M. Yeun/S. Frank(T)/T.Hullquist(T) RESL

Signature:

ICS 204	Date/Time: 7/12/2024 2200	Personnel Count: 76
----------------	---------------------------	---------------------

ASSIGNMENT LIST (ICS 204 WF)

CONTROLLED UNCLASSIFIED
INFORMATION//BASIC

1. Incident Name: <p style="text-align: center; font-size: 1.2em;">SHELLY</p>	2. Operational Period: Date From: 07/13/24 Date To: 07/14/24 Time From: 0700 Time To: 0700	3. Branch Division <p style="text-align: center; font-size: 1.5em;">XX G</p> <p style="text-align: center;">Page 2 of 2 Golf</p>
--	---	--

4. Operations Personnel: Operations Section Chief: J. Owings/S. Lauderdale/J. Flores(T) Branch Director: T. Richter(12), M. Khazaal(T) Division/Group Supervisor: A. Luna/R. Flitt(T)	Night Ops: K.Bohall/R. Szczepanek(T) Branch Safety: Air Attack:
--	--

5. Resources Assigned:							
** Resources Below in Bold are 12 Hour **							
Resource Identifier	ALS	LWD	Leader	Personnel	Request #	Hours	Reporting Location
FMOD WEST COAST CUTTING 2		7/20	Agee	2	O-158	0700-1900	Whites Gulch
FMOD PACIFIC RIDGELINE		7/21	Miller	2	O-161	0700-1900	Whites Gulch
FMOD NORTH ZONE FALLERS 1		7/21	Hall	2	O-187	0700-1900	Whites Gulch
TFLD NESS JR		7/22	Ness Jr	1	O-234	0700-1900	Whites Gulch
FELB SKUSTAD		7/21	Skustad	1	O-47	0700-1900	Whites Gulch
SOFR CHUNG		7/21	Chung	1	O-39	0700-1900	Whites Gulch
REMS 5	X		Sepulveda	4	O-251	0700-1900	Whites Gulch
EMPF SIMPSON	X	7/21	Simpson	1	O-90	0700-1900	Whites Gulch
EMTF MARTING		7/22	Marting	1	O-89	0700-1900	Whites Gulch

6. Work Assignments:
Construct indirect control line from Sawyers Bar Rd north on Snoozer Ridge to the PCT to be utilized as a secondary control line. Identify potential indirect control lines to limit southern and fire progression.

7. Special Instructions:
Backhaul trash and excess equipment to helibase daily.
Identify potential drop points, landing zones, sling site and spike camp locations.
24-hour resources contact Night Ops directly for direction after 1900.

8. Communications								
Name	Ch	Function	Rx Freq	Rx Tone	Tx Freq	Tx Tone	Mode	Notes
NIFC C11	3	COMMAND	170.6875	(T3) 131.8	166.5750	(T3) 131.8	A	Whiskey Butte
NIFC T3	7	TACTICAL	168.6000	(T3) 131.8	168.6000	(T3) 131.8	A	
A/G TAC	14	A/G TAC	168.3750	0.0	168.3750	0.0	A	Overhead use only
CALCORD	15	TACTICAL	156.0750	(T6) 156.7	156.0750	(T6) 156.7	A	
AIRGUARD	16	A/G	168.6250	0.0	168.6250	(T1) 110.9	A	

9. Prepared by: Name:	M. Yeun/S. Frank(T)/T.Hullquist(T)	RESL	Signature: <i>M. Yeun</i>
ICS 204	Date/Time: 7/12/2024 2200		Personnel Count: 15

ASSIGNMENT LIST (ICS 204 WF)

CONTROLLED UNCLASSIFIED
INFORMATION//BASIC

1. Incident Name: <p style="text-align: center; font-size: 1.2em;">SHELLY</p>	2. Operational Period: Date From: 07/13/24 Date To: 07/14/24 Time From: 0700 Time To: 0700	3. Branch Division <p style="text-align: center; font-size: 1.5em;">XX T</p>
4. Operations Personnel:		Page 1 of 2 Tango

Operations Section Chief: J. Owings/S. Lauderdale/J. Flores(T) Branch Director: T. Richter(12), M. Khazaal(T) Division/Group Supervisor: R. Noxon/J. Bird(T)	Night Ops: K.Bohall/R. Szczepanek(T) Branch Safety: Air Attack:
---	--

5. Resources Assigned:	** Resources Below in Bold are 12 Hour **							
Resource Identifier	ALS	LWD	Leader	Personnel	Request #	Hours	Reporting Location	
HC2IA SANTA FE		7/18	Simpson	20	C-19	0700-1900	Whites Gulch	
HC2IA UKONOM		7/21	Peters	21	C-24	0700-1900	Whites Gulch	
HC2 TORRES CONTRACTING		7/24	Lopez	20	C-71	0700-1900	Whites Gulch	
HC2 NORTH PACIFIC		7/25	Perez	20	C-72	0700-1900	Whites Gulch	
ENG3 J3 CONTRACTING 1		7/20	McAndrew	3	E-112	0700-1900	Whites Gulch	
ENG3 SABINO		7/23	Beeley	3	E-114	0700-1900	Whites Gulch	
ENG3 KS JOX E81		7/23	Neis	3	E-121	0700-1900	Whites Gulch	
ENG6 BROCKWAY		7/23	Colton	3	E-155	0700-1900	Whites Gulch	
ENG6 AAA FORESTRY		7/24	Martin	3	E-157	0700-1900	Whites Gulch	
DOZ2 BAR-G 1		7/21	Hummel	2	E-85	0700-1900	Whites Gulch	
DOZ2 LET-ER-BUCK 2		7/24	Cummings	2	E-216	0700-1900	Whites Gulch	
MAST DAVIS CORPORATION		7/23	Stafford	2	E-292	0700-1900	Whites Gulch	
TFLD DEWEY		7/24	Dewey	1	O-294	0700-1900	Whites Gulch	
TFLD(T) CORBIN		7/25	Tyler Corbin	1	O-323	0700-1900	Whites Gulch	
HEQB PALACIOS		7/23	Palacios	1	O-230	0700-1900	Whites Gulch	
HEQB(T) SKINNER		7/14	Skinner	1	O-23	0700-1900	Whites Gulch	
HEQB(T) MAYFIELD			Mayfield		O-299	0700-1900	Whites Gulch	
SMKJ EWING		7/14	Ewing	1	O-24	0700-1900	Whites Gulch	

6. Work Assignments:
Identify potential indirect control lines to limit southern and western fire progression.

7. Special Instructions:
Identify potential drop points, landing zones, sling site and spike camp locations.
24-hour resources contact Night Ops directly for direction after 1900.

8. Communications								
Name	Ch	Function	Rx Freq	Rx Tone	Tx Freq	Tx Tone	Mode	Notes
NIFC C3	1	COMMAND	170.4250	(T3) 131.8	168.0750	(T3) 131.8	A	English Peak
NIFC T4	8	TACTICAL	166.7250	(T3) 131.8	166.7250	(T3) 131.8	A	
A/G TAC	14	A/G TAC	168.3750	0.0	168.3750	0.0	A	Overhead use only
CALCORD	15	TACTICAL	156.0750	(T6) 156.7	156.0750	(T6) 156.7	A	
AIRGUARD	16	A/G	168.6250	0.0	168.6250	(T1) 110.9	A	

9. Prepared by: Name:	M. Yeun/S. Frank(T)/T.Hullquist(T)	RESL	Signature:
ICS 204	Date/Time: 7/12/2024 2200	Personnel Count: 107	

ASSIGNMENT LIST (ICS 204 WF)

CONTROLLED UNCLASSIFIED
INFORMATION//BASIC

1. Incident Name: <p style="text-align: center; font-size: 1.2em;">SHELLY</p>	2. Operational Period: Date From: 07/13/24 Date To: 07/14/24 Time From: 0700 Time To: 0700	3. Branch Division <p style="text-align: center; font-size: 1.5em;">XX T</p> <p style="text-align: center;">Page 2 of 2 Tango</p>
--	---	---

4. Operations Personnel: Operations Section Chief: J. Owings/S. Lauderdale/J. Flores(T) Branch Director: T. Richter(12), M. Khazaal(T) Division/Group Supervisor: R. Noxon/J. Bird(T)	Night Ops: K.Bohall/R. Szczepanek(T) Branch Safety: Air Attack:
--	--

5. Resources Assigned:		** Resources Below in Bold are 12 Hour **					
Resource Identifier	ALS	LWD	Leader	Personnel	Request #	Hours	Reporting Location
PACK ANDREWS			Andrews			0700-1900	Whites Gulch
PACK SPRIK		7/24	Sprk	1	O-101	0700-1900	Whites Gulch
PACK ROOS		7/24	Roos	1	O-224	0700-1900	Whites Gulch
SOFR PFISTER		7/22	Pfister	1	O-146	0700-1900	Whites Gulch
SOFR(T) SELLERS		7/23	Sellers	1	O-211	0700-1900	Whites Gulch
EMPF SINCLAIR	X	7/20	Sinclair	1	O-91	0700-1900	Whites Gulch
EMPF CRUMPACKER	X	7/22	Crumpacker	1	O-199	0700-1900	Whites Gulch
EMTF FARRER		7/22	Farrer	1	O-86	0700-1900	Whites Gulch
EMTF WOOTEN		7/21	Wooten	1	O-88	0700-1900	Whites Gulch
REAF LUDT		7/22	Ludt	1	O-177	0700-1900	Whites Gulch
REAF DIAZ		7/22	Diaz	1	O-246	0700-1900	Whites Gulch

6. Work Assignments:
Identify potential indirect control lines to limit southern and western fire progression.

7. Special Instructions:
Identify potential drop points, landing zones, sling site and spike camp locations.
24-hour resources contact Night Ops directly for direction after 1900.

8. Communications

Name	Ch	Function	Rx Freq	Rx Tone	Tx Freq	Tx Tone	Mode	Notes
NIFC C3	1	COMMAND	170.4250	(T3) 131.8	168.0750	(T3) 131.8	A	English Peak
NIFC T4	8	TACTICAL	166.7250	(T3) 131.8	166.7250	(T3) 131.8	A	
A/G TAC	14	A/G TAC	168.3750	0.0	168.3750	0.0	A	Overhead use only
CALCORD	15	TACTICAL	156.0750	(T6) 156.7	156.0750	(T6) 156.7	A	
AIRGUARD	16	A/G	168.6250	0.0	168.6250	(T1) 110.9	A	

9. Prepared by: Name: M. Yeun/S. Frank(T)/T.Hullquist(T) RESL Signature:

ICS 204 Date/Time: 7/12/2024 2200 Personnel Count: 10

ASSIGNMENT LIST (ICS 204 WF)

CONTROLLED UNCLASSIFIED
INFORMATION/BASIC

1. Incident Name: <p style="text-align: center; font-size: 1.2em;">SHELLY</p>	2. Operational Period: Date From: 07/13/24 Date To: 07/14/24 Time From: 0700 Time To: 0700	3. Branch Division <p style="text-align: center; font-size: 1.2em;">XX Night</p>
--	---	---

4. Operations Personnel:		Page 1 of 1
Operations Section Chief: J. Owings/S. Lauderdale/J. Flores(T) Branch Director: T. Richter(12), M. Khazaal(T) Division/Group Supervisor: TBD	Night Ops: K.Bohall/R. Szczepanek(T) Branch Safety: Air Attack:	

5. Resources Assigned:	** Resources Below in Bold are 12 Hour **							
Resource Identifier	ALS	LWD	Leader	Personnel	Request #	Hours	Reporting Location	
HC1 DIAMOND MOUNTAIN		7/18	Dobyns	20	C-12	1900-0700	Etna ICP	
ENG6 NORTH LAKE B16		7/22	Neckels	3	E-161	1900-0700	Etna ICP	
ENG6 LCFA WILDLAND 741		7/23	Dustin Brown	3	E-163	1900-0700	Etna ICP	
WTS2 JOHN SEMPLE 2		7/21	Horn	1	E-88	1900-0700	Etna ICP	
WTS2 JOHN SEMPLE 3		7/21	Goldie	2	E-89	1900-0700	Etna ICP	
DOZ2 NORTHSTATE 1		7/21	Poe	2	E-83	1900-0700	Etna ICP	
DOZ2 DARRAH LOGGING 1		7/22	Derra	2	E-221	1900-0700	Etna ICP	
DOZ2 DARRAH LOGGING 2		7/22	Waterman	2	E-222	1900-0700	Etna ICP	
SOFR HABECK		7/22	Habeck	1	O-212	1900-0700	Etna ICP	
SOFR(T) AULD		7/22	Auld	1	O-209	1900-0700	Etna ICP	
REMS 7	X	7/23	Kastelic	4	O-267	1900-0700	Etna ICP	
EMPF HARDINA	X	7/23	Hardina	1	O-253	1900-0700	Etna ICP	
EMTF MATLOCK		7/23	Matlock	1	O-204	1900-0700	Etna ICP	
AMBO 2	X	7/21	Jensen	3	E-209	1900-0700	Etna ICP	

6. Work Assignments:
Continue to construct direct and indirect control lines established by day shift to limit the fire progression.

7. Special Instructions:

8. Communications

Name	Ch	Function	Rx Freq	Rx Tone	Tx Freq	Tx Tone	Mode	Notes
Use appropriate Command for Division assigned to								
Use appropriate Tactical for Division assigned to								
A/G TAC	14	A/G TAC	168.3750	0.0	168.3750	0.0	A	Overhead use only
CALCORD	15	TACTICAL	156.0750	(T6) 156.7	156.0750	(T6) 156.7	A	
AIRGUARD	16	A/G	168.6250	0.0	168.6250	(T1) 110.9	A	

9. Prepared by: Name: M. Yeun/S. Frank(T)/T.Hullquist(T) RESL

Signature:

ICS 204	Date/Time: 7/12/2024 2200	Personnel Count: 46
----------------	---------------------------	---------------------

ASSIGNMENT LIST (ICS 204 WF)

CONTROLLED UNCLASSIFIED
INFORMATION//BASIC

1. Incident Name: <p style="text-align: center; font-size: 1.2em;">SHELLY</p>	2. Operational Period: Date From: 07/13/24 Date To: 07/14/24 Time From: 0700 Time To: 0700	3. Branch Division Contingency North
---	---	--

4. Operations Personnel:		Page 1 of 4
Operations Section Chief: J. Owings/S. Lauderdale/J. Flores(T) Branch Director: L. Wright Division/Group Supervisor: S. Kovacs/J. Stitt(T)	Night Ops: K.Bohall/R. Szczepanek(T) Branch Safety: Air Attack:	

5. Resources Assigned:	** Resources Below in Bold are 12 Hour **							
Resource Identifier	ALS	LWD	Leader	Personnel	Request #	Hours	Reporting Location	
HC1 REDMOND IHC		7/18	Varon	20	C-42	0700-1900	Etna ICP	
HC2IA PACIFIC OASIS 14A		7/21	Langberg	20	C-26	0700-1900	Etna ICP	
HC2IA ARDEN SOLUTIONS		7/21	Harrison	20	C-30	0700-1900	Etna ICP	
HC2IA DEVILS CANYON		7/22	Merritt	20	C-31	0700-1900	Etna ICP	
HC2IA BILLINGS		7/21	Lissick	20	C-32	0700-1900	Etna ICP	
ENG3 J3 CONTRACTING 4		7/23	Nahee	3	E-116	0700-1900	Etna ICP	
ENG3 STEAMBOAT SPRINGS		7/22	White	3	E-117	0700-1900	Etna ICP	
ENG3 NATIONAL WILDLAND FIRE		7/22	Baca	3	E-119	0700-1900	Etna ICP	
ENG3 CB FIRE		7/22	Bradford	3	E-123	0700-1900	Etna ICP	
ENG3 J3 CONTRACTING 6		7/23	West	3	E-133	0700-1900	Etna ICP	
ENG3 J3 CONTRACTING 7		7/23	Stark	3	E-134	0700-1900	Etna ICP	
ENG6 RYAN FLORES		7/21	Aldrich	4	E-62	0700-1900	Etna ICP	
ENG6 THOMAS CAMPBELL		7/21	Hoover	3	E-63	0700-1900	Etna ICP	
ENG6 MADISON FD #661		7/22	Ricks	4	E-151	0700-1900	Etna ICP	
ENG6 LOOMIS FIRE		7/22	Melendez	3	E-154	0700-1900	Etna ICP	
ENG6 MTCES E7175		7/22	Gilbert	3	E-159	0700-1900	Etna ICP	
ENG6 BUTTE 1		7/22	Secconb	2	E-160	0700-1900	Etna ICP	
ENG6 GRAND VALLEY 31		7/23	Oldright	3	E-165	0700-1900	Etna ICP	

6. Work Assignments:
Identify and construct potential contingency lines to limit the fire progression.
Improve Scott River Rd to limit northern fire progression.

7. Special Instructions:
Identify and establish water sources.
Do not use hydrants as water sources unless conducting direct suppression around residential area.

8. Communications								
Name	Ch	Function	Rx Freq	Rx Tone	Tx Freq	Tx Tone	Mode	Notes
NIFC C10	2	COMMAND	170.4125	(T3) 131.8	165.9625	(T3) 131.8	A	Quartz Lookout
NIFC T5	9	TACTICAL	166.7750	(T3) 131.8	166.7750	(T3) 131.8	A	
A/G TAC	14	A/G TAC	168.3750	0.0	168.3750	0.0	A	Overhead use only
CALCORD	15	TACTICAL	156.0750	(T6) 156.7	156.0750	(T6) 156.7	A	
AIRGUARD	16	A/G	168.6250	0.0	168.6250	(T1) 110.9	A	

9. Prepared by: Name:	M. Yeun/S. Frank(T)/T.Hullquist(T)	RESL	Signature:
ICS 204	Date/Time: 7/12/2024	2200	Personnel Count: 140

ASSIGNMENT LIST (ICS 204 WF)

CONTROLLED UNCLASSIFIED
INFORMATION//BASIC

1. Incident Name:	2. Operational Period:	3. Branch	Division
SHELLY	Date From: 07/13/24 Date To: 07/14/24 Time From: 0700 Time To: 0700	Contingency	North


4. Operations Personnel:		Page 2 of 4
Operations Section Chief: J. Owings/S. Lauderdale/J. Flores(T)	Night Ops: K.Bohall/R. Szczepanek(T)	
Branch Director: L. Wright	Branch Safety:	
Division/Group Supervisor: S. Kovacs/J. Stitt(T)	Air Attack:	

5. Resources Assigned:	** Resources Below in Bold are 12 Hour **							
Resource Identifier	ALS	LWD	Leader	Personnel	Request #	Hours	Reporting Location	
ENG6 PROMETHUS		7/22	Stenger	3	E-166	0700-1900	Etna ICP	
WTS2 CATTLE LACK 1		7/22	Enlow	1	E-90	0700-1900	Etna ICP	
WTS2 CATTLE LACK 2		7/22	Shapp	1	E-91	0700-1900	Etna ICP	
DOZ2 DAVIS CONSTRUCTION		7/21	Deister	2	E-79	0700-1900	Etna ICP	
DOZ2 LET-ER-BUCK 1		7/21	Lassen	1	E-76	0700-1900	Etna ICP	
DOZ2 ABLE SERVICES		7/22	Gordon	2	E-77	0700-1900	Etna ICP	
PACIFIC RIDGELINE 1		7/25	Wylie	1	E-217	0700-1900	Etna ICP	
CHP2 NORTH ZONE 1		7/21	Demery	3	E-56	0700-1900	Etna ICP	
CHP2 NORTH ZONE 2		7/21	Ingram	3	E-57	0700-1900	Etna ICP	
FMOD TOMS TIMBER		7/21	Josh	2	O-154	0700-1900	Etna ICP	
FMOD LONG GROUND		7/21	Bokish	2	O-160	0700-1900	Etna ICP	
FMOD GOD & COUNTRY 1		7/21	Barny	2	O-162	0700-1900	Etna ICP	
FMOD GOD & COUNTRY 2		7/21	Robbins	2	O-163	0700-1900	Etna ICP	
FMOD NORTH ZONE FALLERS		7/21	Bennett	2	O-188	0700-1900	Etna ICP	
TFLD PERRAULT		7/21	Perrault	1	O-165	0700-1900	Etna ICP	
TFLD DELSANTOS		7/22	Delsantos	1	O-232	0700-1900	Etna ICP	
TFLD LICHTER		7/22	Lichter	1	O-235	0700-1900	Etna ICP	

6. Work Assignments:
 Identify and construct potential contingency lines to limit the fire progression.
 Improve Scott River Rd to limit northern fire progression.

7. Special Instructions:
 Identify and establish water sources.
 Do not use hydrants as water sources unless conducting direct suppression around residential area.

8. Communications								
Name	Ch	Function	Rx Freq	Rx Tone	Tx Freq	Tx Tone	Mode	Notes
NIFC C10	2	COMMAND	170.4125	(T3) 131.8	165.9625	(T3) 131.8	A	Quartz Lookout
NIFC T5	9	TACTICAL	166.7750	(T3) 131.8	166.7750	(T3) 131.8	A	
A/G TAC	14	A/G TAC	168.3750	0.0	168.3750	0.0	A	Overhead use only
CALCORD	15	TACTICAL	156.0750	(T6) 156.7	156.0750	(T6) 156.7	A	
AIRGUARD	16	A/G	168.6250	0.0	168.6250	(T1) 110.9	A	

9. Prepared by: Name: M. Yeun/S. Frank(T)/T.Hullquist(T) RESL
 Signature: 
ICS 204 Date/Time: 7/12/2024 2200 Personnel Count: 30

ASSIGNMENT LIST (ICS 204 WF)

CONTROLLED UNCLASSIFIED
INFORMATION/BASIC

1. Incident Name: <p style="text-align: center;">SHELLY</p>	2. Operational Period: Date From: 07/13/24 Date To: 07/14/24 Time From: 0700 Time To: 0700	3. Branch Division Contingency North
--	---	--

4. Operations Personnel:		Page 3 of 4
Operations Section Chief: J. Owings/S. Lauderdale/J. Flores(T)	Night Ops: K.Bohall/R. Szczepanek(T)	
Branch Director: L. Wright	Branch Safety:	
Division/Group Supervisor: S. Kovacs/J. Stitt(T)	Air Attack:	

5. Resources Assigned:	** Resources Below in Bold are 12 Hour **							
Resource Identifier	ALS	LWD	Leader	Personnel	Request #	Hours	Reporting Location	
TFLD NEUMAN		7/22	Neuman	1	O-248	0700-1900	Etna ICP	
TFLD(T) DAWSON		7/21	Dawson	1	O-164	0700-1900	Etna ICP	
HEQB RABLIN		7/21	Rablin	1	O-176	0700-1900	Etna ICP	
HEQB STEVENS		7/21	Stevens	1	O-226	0700-1900	Etna ICP	
HEQB EDMONDSON		7/24	Edmondson	1	O-229	0700-1900	Etna ICP	
HEQB CORDELL		7/22	Cordell	1	O-227	0700-1900	Etna ICP	
FOBS BRICKEY		7/13	Brickey	1	O-130	0700-1900	Etna ICP	
FOBS MILLER		7/14	Miller	1	O-131	0700-1900	Etna ICP	
SOFC GRANT		7/13	Grant	1	O-5	0700-1900	Etna ICP	
SOFR NORTH		7/22	North	1	O-213	0700-1900	Etna ICP	
SOFR(T) GRAY		7/17	Gray	1	O-7.6	0700-1900	Etna ICP	
EMPF CORRAL	X	7/21	Corral	1	O-197	0700-1900	Etna ICP	
EMPF DEJONG	X	7/22	DeJong	1	O-198	0700-1900	Etna ICP	
EMPF(T) BROWN	X	7/23	Brown	1	O-314	0700-1900	Etna ICP	
EMTF CARROL		7/19	Carrol	1	O-52	0700-1900	Etna ICP	
EMTF HARDIN		7/23	Hardin	1	O-271	0700-1900	Etna ICP	
AMBO 3	X	7/22	Gurtovoy	3	E-228	0700-1900	Etna ICP	

6. Work Assignments:
Identify and construct potential contingency lines to limit the fire progression.
Improve Scott River Rd to limit northern fire progression.

7. Special Instructions:
Identify and establish water sources.
Do not use hydrants as water sources unless conducting direct suppression around residential area.

8. Communications

Name	Ch	Function	Rx Freq	Rx Tone	Tx Freq	Tx Tone	Mode	Notes
NIFC C10	2	COMMAND	170.4125	(T3) 131.8	165.9625	(T3) 131.8	A	Quartz Lookout
NIFC T5	9	TACTICAL	166.7750	(T3) 131.8	166.7750	(T3) 131.8	A	
A/G TAC	14	A/G TAC	168.3750	0.0	168.3750	0.0	A	Overhead use only
CALCORD	15	TACTICAL	156.0750	(T6) 156.7	156.0750	(T6) 156.7	A	
AIRGUARD	16	A/G	168.6250	0.0	168.6250	(T1) 110.9	A	

9. Prepared by: Name: M. Yeun/S. Frank(T)/T.Hullquist(T) RESL
Signature:

ICS 204 Date/Time: 7/12/2024 2200 Personnel Count: 19

ASSIGNMENT LIST (ICS 204 WF)

CONTROLLED UNCLASSIFIED
INFORMATION//BASIC

1. Incident Name: SHELLY		2. Operational Period: Date From: 07/13/24 Date To: 07/14/24 Time From: 0700 Time To: 0700				3. Branch Division Contingency South			
						Page 1 of 3			
4. Operations Personnel: Operations Section Chief: J. Owings/S. Lauderdale/J. Flores(T) Branch Director: L. Wright Division/Group Supervisor: R. DeCamp			Night Ops: K.Bohall/R. Szczepanek(T) Branch Safety: Air Attack:						
5. Resources Assigned:		** Resources Below in Bold are 12 Hour **							
Resource Identifier	ALS	LWD	Leader	Personnel	Request #	Hours	Reporting Location		
HC2IA BLACK MESA	X	7/17	Ellis	23	C-16	0700-1900	Etna ICP		
HC2IA GRAYBACK FORESTRY		7/21	Rhinehart	20	C-29	0700-1900	Etna ICP		
HC2IA NORTH IDAHO		7/22	Kearn	20	C-48	0700-1900	Etna ICP		
ENG3 J3 CONTRACTING 2		7/23	Wallace	3	E-113	0700-1900	Etna ICP		
ENG3 J3 CONTRACTING 3		7/23	Bariel	3	E-115	0700-1900	Etna ICP		
ENG3 CAHOON		7/25	Beacham	3	E-122	0700-1900	Etna ICP		
ENG3 WILDFIRE RESOURCES		7/23	Fowler	3	E-124	0700-1900	Etna ICP		
ENG3 THOMAS HAYNES		7/21	McCrea	3	E-125	0700-1900	Etna ICP		
ENG3 ROCKY MOUNTAIN FIRE		7/23	Stanford	3	E-126	0700-1900	Etna ICP		
ENG3 OUTBACK 1		7/22	Terry	3	E-130	0700-1900	Etna ICP		
ENG3 OUTBACK 2		7/22	Beal	3	E-131	0700-1900	Etna ICP		
ENG3 J3 CONTRACTING 8		7/23	Klotz	3	E-135	0700-1900	Etna ICP		
ENG3 J3 CONTRACTING 9		7/23	Desrosier	3	E-136	0700-1900	Etna ICP		
ENG6 ROARING FORK		7/15	Blangsted	4	E-148	0700-1900	Etna ICP		
ENG6 MES 6217		7/13	Bennett	4	E-150	0700-1900	Etna ICP		
ENG6 BLACK HAWK		7/22	Jansen	1	E-152	0700-1900	Etna ICP		
ENG6 NATIONAL FIRE		7/23	Arenas	3	E-153	0700-1900	Etna ICP		
ENG6 WOODPECKER		7/22	Imel	3	E-164	0700-1900	Etna ICP		
WTS2 WHITE		7/21	White	1	E-48	0700-1900	Etna ICP		
6. Work Assignments: Identify and construct potential contingency lines to limit the fire progression. Improve Sawyers Bar Rd from E/F break to the south to limit southern and eastern fire progression. Improve the roads into the Ruffy Gap area to limit road breakdown and maintain usable surfaces.									
7. Special Instructions: Identify and establish water sources. Do not use hydrants as water sources unless conducting direct suppression around residential area.									
8. Communications									
Name	Ch	Function	Rx Freq	Rx Tone	Tx Freq	Tx Tone	Mode	Notes	
NIFC C3	1	COMMAND	170.4250	(T3) 131.8	168.0750	(T3) 131.8	A	English Peak	
NIFC T6	10	TACTICAL	168.2500	(T3) 131.8	168.2500	(T3) 131.8	A		
A/G TAC	14	A/G TAC	168.3750	0.0	168.3750	0.0	A	Overhead use only	
CALCORD	15	TACTICAL	156.0750	(T6) 156.7	156.0750	(T6) 156.7	A		
AIRGUARD	16	A/G	168.6250	0.0	168.6250	(T1) 110.9	A		
9. Prepared by: Name:		M. Yeun/S. Frank(T)/T.Hullquist(T)			RESL			Signature:	
ICS 204		Date/Time: 7/12/2024 2200			Personnel Count: 108				

ASSIGNMENT LIST (ICS 204 WF)

CONTROLLED UNCLASSIFIED
INFORMATION//BASIC

1. Incident Name:	2. Operational Period:	3. Branch Division
SHELLY	Date From: 07/13/24 Date To: 07/14/24 Time From: 0700 Time To: 0700	Contingency South
		Page 2 of 3


4. Operations Personnel:	
Operations Section Chief: J. Owings/S. Lauderdale/J. Flores(T)	Night Ops: K.Bohall/R. Szczepanek(T)
Branch Director: L. Wright	Branch Safety:
Division/Group Supervisor: R. DeCamp	Air Attack:

5. Resources Assigned:		** Resources Below in Bold are 12 Hour **					
Resource Identifier	ALS	LWD	Leader	Personnel	Request #	Hours	Reporting Location
WTS2 MATT JOHNSON		7/20	Nichols	1	E-49	0700-1900	Etna ICP
WTS2 OVERWATCH		7/20	Krautheim	2	E-50	0700-1900	Etna ICP
DOZ2 KNF 1		7/16	Grotting	4	E-1	0700-1900	Etna ICP
DOZ2 JOHNSON		7/21	Maxwell	2	E-78	0700-1900	Etna ICP
DOZ2 JUNGWIRTH 1		7/24	Weese	2	E-80	0700-1900	Etna ICP
DOZ2 EVANS BROTHERS		7/21	Evans	2	E-87	0700-1900	Etna ICP
DOZ2 NORTHSTATE 2		7/23	Metz	1	E-213	0700-1900	Etna ICP
DOZ2 TYSON MORGAN		7/23	Ebejeje	2	E-215	0700-1900	Etna ICP
DOZ2 PACIFIC RIDGELINE 2		7/23	Britt	2	E-218	0700-1900	Etna ICP
DOZ2 JUNGWIRTH 2		7/22	Hill	2	E-220	0700-1900	Etna ICP
DOZ2 ZANCO		7/21	Gray	2	E-82	0700-1900	Etna ICP
MAST JIM JOHNSON		7/24	Downing	3	E-289	0700-1900	Etna ICP
MAST SMOKY MOUNTAIN		7/21	Tomlins	2	E-59	0700-1900	Etna ICP
MAST JUNGWIRTH		7/24	Jungwirth	1	E-291	0700-1900	Etna ICP
CHIP WELL EQUIPPED		7/25	Adkins	2	E-20297	0700-1900	Etna ICP
FMOD AXE CONTRACTING		7/21	Goodwin	2	O-185	0700-1900	Etna ICP
TFLD COOK		7/22	Cook	1	O-51	0700-1900	Etna ICP
TFLD SCATES		7/25	Scates	1	O-391	0700-1900	Etna ICP
HEQB CRUM		7/14	Crum	1	O-175	0700-1900	Etna ICP

6. Work Assignments:
 Identify and construct potential contingency lines to limit the fire progression.
 Improve Sawyers Bar Rd from E/F break to the south to limit southern and eastern fire progression.
 Improve the roads into the Ruffy Gap area to limit road breakdown and maintain usable surfaces.

7. Special Instructions:
 Identify and establish water sources.
 Do not use hydrants as water sources unless conducting direct suppression around residential area.

8. Communications								
Name	Ch	Function	Rx Freq	Rx Tone	Tx Freq	Tx Tone	Mode	Notes
NIFC C3	1	COMMAND	170.4250	(T3) 131.8	168.0750	(T3) 131.8	A	English Peak
NIFC T6	10	TACTICAL	168.2500	(T3) 131.8	168.2500	(T3) 131.8	A	
A/G TAC	14	A/G TAC	168.3750	0.0	168.3750	0.0	A	Overhead use only
CALCORD	15	TACTICAL	156.0750	(T6) 156.7	156.0750	(T6) 156.7	A	
AIRGUARD	16	A/G	168.6250	0.0	168.6250	(T1) 110.9	A	

9. Prepared by: Name: M. Yeun/S. Frank(T)/T.Hullquist(T) RESL
 Signature: 

ASSIGNMENT LIST (ICS 204 WF)

CONTROLLED UNCLASSIFIED
INFORMATION/BASIC

1. Incident Name:	2. Operational Period:	3. Branch	Division
SHELLY	Date From: 07/13/24 Date To: 07/14/24 Time From: 0700 Time To: 0700	Contingency	South

4. Operations Personnel:		Page 3 of 3
Operations Section Chief: J. Owings/S. Lauderdale/J. Flores(T) Branch Director: L. Wright Division/Group Supervisor: R. DeCamp	Night Ops: K.Bohall/R. Szczepanek(T) Branch Safety: Air Attack:	

5. Resources Assigned:		** Resources Below in Bold are 12 Hour **					
Resource Identifier	ALS	LWD	Leader	Personnel	Request #	Hours	Reporting Location
HEQB CASTILLO		7/24	Castillo	1	O-296	0700-1900	Etna ICP
HEQB WILSON		7/22	Wilson		O-297	0700-1900	Etna ICP
HEQB TIDWELL			Tidwell	1	O-298	0700-1900	Etna ICP
HEQB KINDNESS			Kindness	1	O-317	0700-1900	Etna ICP
HEQB(T) SPENCER		7/26	Spencer	1	O-379	0700-1900	Etna ICP
HEQB(T) SMITH		7/26	Smith	1	O-380	0700-1900	Etna ICP
SOFR SMITH	X	7/22	Smith	1	O-215	0700-1900	Etna ICP
REMS 8	X	7/25	Gale	4	O-20192	0700-1900	Etna ICP
EMPF HORVATH	X	7/22	Horvath	1	O-93	0700-1900	Etna ICP
EMTF SOTO		7/21	Soto	1	O-53	0700-1900	Etna ICP
AMBO 4	X	7/22	Baylay	3	E-210	0700-1900	Etna ICP

6. Work Assignments:

Identify and construct potential contingency lines to limit the fire progression.
 Improve Sawyers Bar Rd from E/F break to the south to limit southern and eastern fire progression.
 Improve the roads into the Ruffy Gap area to limit road breakdown and maintain usable surfaces.

7. Special Instructions:

Identify and establish water sources.
 Do not use hydrants as water sources unless conducting direct suppression around residential area.

8. Communications

Name	Ch	Function	Rx Freq	Rx Tone	Tx Freq	Tx Tone	Mode	Notes
NIFC C3	1	COMMAND	170.4250	(T3) 131.8	168.0750	(T3) 131.8	A	English Peak
NIFC T6	10	TACTICAL	168.2500	(T3) 131.8	168.2500	(T3) 131.8	A	
A/G TAC	14	A/G TAC	168.3750	0.0	168.3750	0.0	A	Overhead use only
CALCORD	15	TACTICAL	156.0750	(T6) 156.7	156.0750	(T6) 156.7	A	
AIRGUARD	16	A/G	168.6250	0.0	168.6250	(T1) 110.9	A	

9. Prepared by: Name: M. Yeun/S. Frank(T)/T.Hullquist(T) RESL

Signature:

ICS 204 Date/Time: 7/12/2024 2200 Personnel Count: 15

ASSIGNMENT LIST (ICS 204 WF)

CONTROLLED UNCLASSIFIED
INFORMATION//BASIC

1. Incident Name: SHELLY	2. Operational Period: Date From: 07/13/24 Date To: 07/14/24 Time From: 0700 Time To: 0700	3. Branch Division Contingency East
---	---	--

4. Operations Personnel:		Page 1 of 1
Operations Section Chief: J. Owings/S. Lauderdale/J. Flores(T) Branch Director: L. Wright Division/Group Supervisor: S. Clement(12)	Night Ops: K.Bohall/R. Szczepanek(T) Branch Safety: Air Attack:	

5. Resources Assigned:		** Resources Below in Bold are 12 Hour **					
Resource Identifier	ALS	LWD	Leader	Personnel	Request #	Hours	Reporting Location
STF OES 1807F		7/23	FACKINER, CORY	17	E-252	0700-1900	DP7
CRW2 PVT C-20024 NORTH			MOONEY, ZACHARY	20	C-20024	0700-2300	DP7
CRW2 PVT C-20025 NORTH			DISHION, LLOYD	20	C-20025	0700-2300	DP7
CRW2 PVT C-20026 NORTH				16 +/-	C-20026	0700-2300	DP7
W/T PVT E-20246 - FOOTHILL			KELLY, TOM		E-20246	0700-0700	DP7
CHIP PVT E-20294 - SISK			LANGE, DENNIS	2	E-20294	0700-1900	DP7
CHIP PVT E-20295 - BROWN			HAPTONSTALL, CHUCK	2	E-20295	0700-1900	DP7
CHIP PVT E-20297 - WELL							DP7
CHIP TBD						0700-0700	DP7
FEL PVT E-20118 - JW			MORRISON, MATT		E-20118	0700-1900	DP7
FEL PVT E-20119 - JW			MORRISON, MATT		E-20119	0700-1900	DP7
FEL PVT E-20120 - RAY			RAYGOZA, AUSIN	1	E-20120	0700-1900	DP7
SKD PVT E-20112 - LASS			LASSEN, STEVE		E-20112	0700-0700	DP7
SKD PVT E-20114 - BUSH			BUSHY, ANDREW	1	E-20114	0700-0700	DP7
SKD PVT E-20116 - RIDGE LOG			DIAZ, DAVY		E-20116	0700-0700	DP7
SKD PVT E-20117 - RIDGE LOG			SLACK, JAMES		E-20117	0700-0700	DP7
SKD PVT E-20206 - JW			ARMSTRONG, OLIVIA	2	E-20206	0700-0700	DP7
HEQB TURNER			TURNER, CAMERON	1	O-20141	0700-1900	DP7

6. Work Assignments:
Identify and construct contingency line.

7. Special Instructions:
DP7 located at South Kidder Creek Road and HWY 3.

8. Communications								
Name	Ch	Function	Rx Freq	Rx Tone	Tx Freq	Tx Tone	Mode	Notes
NIFC C11	3	COMMAND	170.6875	(T3) 131.8	166.5750	(T3) 131.8	A	Whiskey Butte
VTAC 12	11	TACTICAL	154.4525	(T6) 156.7	154.4525	(T6) 156.7	A	
A/G TAC	14	A/G TAC	168.3750	0.0	168.3750	0.0	A	Overhead use only
CALCORD	15	TACTICAL	156.0750	(T6) 156.7	156.0750	(T6) 156.7	A	
AIRGUARD	16	A/G	168.6250	0.0	168.6250	(T1) 110.9	A	

9. Prepared by: Name: M. Yeun/S. Frank(T)/T.Hullquist(T) RESL
Signature:

ICS 204 Date/Time: 7/12/2024 2200 Personnel Count: 82

ASSIGNMENT LIST (ICS 204 WF)

CONTROLLED UNCLASSIFIED
INFORMATION//BASIC

1. Incident Name: SHELLY	2. Operational Period: Date From: 07/13/24 Date To: 07/14/24 Time From: 0700 Time To: 0700	3. Branch Structure	Division Etna
---	---	--------------------------------------	--------------------------------

Page 1 of 1


4. Operations Personnel: Operations Section Chief: J. Owings/S. Lauderdale/J. Flores(T) Branch Director: J. Howard (12) Division/Group Supervisor: R. West(12)		Night Ops: K.Bohall/R. Szczepanek(T) Branch Safety: Air Attack:
---	--	--

5. Resources Assigned:		** Resources Below in Bold are 12 Hour **					
Resource Identifier	ALS	LWD	Leader	Personnel	Request #	Hours	Reporting Location
STA OES 2805A			GIRARD, NATE	21	E-20176	0700-1900	HWY 3 X Howell Ave
STA OES 1360A		7/22	MILLER, ALEC	1	E-253	0700-1900	HWY 3 X Howell Ave
STA XSM 2276A			THORNE, JEFF DAVID		E-20175	0700-1900	HWY 3 X Howell Ave
STA XSD 6410A			O'GORMAN, GREG	22	E-20186	0700-1900	HWY 3 X Howell Ave
STA XSD 6440A			BLUNT, ROD	17	E-20182	0700-1900	HWY 3 X Howell Ave
W/T PVT E-20194 - TWO			CLARK, STEVE		E-20194	0700-0700	HWY 3 X Howell Ave
W/T PVT E-20239 - TJ			EVANSON, WILLIAM	2	E-20239	0700-0700	HWY 3 X Howell Ave
W/T PVT E-20244 - MARIAH					E-20244	0700-0700	HWY 3 X Howell Ave

6. Work Assignments: Implement a Structure Defense Plan.
--

7. Special Instructions:

8. Communications								
Name	Ch	Function	Rx Freq	Rx Tone	Tx Freq	Tx Tone	Mode	Notes
NIFC C11	3	COMMAND	170.6875	(T3) 131.8	166.5750	(T3) 131.8	A	Whiskey Butte
CDF T36	P3.9	TACTICAL	159.3225	(T17) 67.0	159.3225	(T17) 67.0	A	
A/G TAC	14	A/G TAC	168.3750	0.0	168.3750	0.0	A	Overhead use only
CALCORD	15	TACTICAL	156.0750	(T6) 156.7	156.0750	(T6) 156.7	A	
AIRGUARD	16	A/G	168.6250	0.0	168.6250	(T1) 110.9	A	

9. Prepared by: Name: M. Yeun/S. Frank(T)/T.Hullquist(T) RESL	Signature: 
ICS 204	Date/Time: 7/12/2024 2200 Personnel Count: 63

ASSIGNMENT LIST (ICS 204 WF)

CONTROLLED UNCLASSIFIED
INFORMATION/BASIC

1. Incident Name: <p style="text-align: center; font-weight: bold;">SHELLY</p>	2. Operational Period: Date From: 07/13/24 Date To: 07/14/24 Time From: 0700 Time To: 0700	3. Branch Division Structure Quartz Valley
--	---	---

Page 1 of 1

4. Operations Personnel: Operations Section Chief: J. Owings/S. Lauderdale/J. Flores(T) Branch Director: J. Howard (12) Division/Group Supervisor: M. Milojevich (12)		Night Ops: K.Bohall/R. Szczepanek(T) Branch Safety: Air Attack:
--	--	--

5. Resources Assigned:		** Resources Below in Bold are 12 Hour **					
Resource Identifier	ALS	LWD	Leader	Personnel	Request #	Hours	Reporting Location
S/T ENG1 OES 4806A		7/23	GRAF, JOHN		E-257	0700-1900	DP9
STA OES 1815A			BROWNE, PETER	21	E-20179	0700-1900	DP9
ENG3 FORT JONES 1311					E-20139	0700-1900	DP9
ENG3 TBD						0700-0700	DP9
W/T PVT E-20047 - DOUBLE			HANNA		E-20047	0700-0700	DP9
W/T PVT E-20242 - AMERICA			REALI, VINCENT	2	E-20242	0700-0700	DP9
CHIP PVT E-20296 - BUNDY					E-20296	0700-1900	DP9
CHIP TBD						0700-0700	DP9

6. Work Assignments:
 Prepare to implement a Structure Defense Plan.
 Prepare structures for potential fire impacts.

7. Special Instructions:
 DP9 located at Mill Creek Road and Emigrant Creek Road.

8. Communications								
Name	Ch	Function	Rx Freq	Rx Tone	Tx Freq	Tx Tone	Mode	Notes
NIFC C10	2	COMMAND	170.4125	(T3) 131.8	165.9625	(T3) 131.8	A	Quartz Lookout
CDF T37	P3.10	TACTICAL	151.1525	(T17) 67.0	151.1525	(T17) 67.0	A	
A/G TAC	14	A/G TAC	168.3750	0.0	168.3750	0.0	A	Overhead use only
CALCORD	15	TACTICAL	156.0750	(T6) 156.7	156.0750	(T6) 156.7	A	
AIRGUARD	16	A/G	168.6250	0.0	168.6250	(T1) 110.9	A	

9. Prepared by: Name:	M. Yeun/S. Frank(T)/T.Hullquist(T)	RESL	Signature:
ICS 204	Date/Time: 7/12/2024 2200	Personnel Count: 23	

ASSIGNMENT LIST (ICS 204 WF)

CONTROLLED UNCLASSIFIED
INFORMATION//BASIC

1. Incident Name: <p style="text-align: center; font-size: 1.2em;">SHELLY</p>	2. Operational Period: Date From: 07/13/24 Date To: 07/14/24 Time From: 0700 Time To: 0700	3. Branch Division <p style="font-size: 1.2em;">Structure Greenview</p>
4. Operations Personnel:		Page 1 of 2

Operations Section Chief: J. Owings/S. Lauderdale/J. Flores(T)	Night Ops: K.Bohall/R. Szczepanek(T)
Branch Director: J. Howard (12)	Branch Safety:
Division/Group Supervisor: C. Reginatto(12)	Air Attack:

5. Resources Assigned:		** Resources Below in Bold are 12 Hour **					
Resource Identifier	ALS	LWD	Leader	Personnel	Request #	Hours	Reporting Location
S/T ENG1 OES 2804A		7/22	MOSS, BERT		E-249	0700-1900	DP7
STA OES 2806A			ABELSON, JOEL	20	E-20174	0700-1900	DP7
STA XLC 1202A			NAUSHA, DANIEL	22	E-251	0700-1900	DP7
STA OES 6840A	X		MORA, SERGIO	22	E-20181	0700-1900	DP7
STB OES 5802B			COUGHRAN, ERIC	19	E-254	0700-1900	DP7
STC TBD						0700-0700	DP7
STC TBD						0700-0700	DP7
ENG3 SCOTT VALLEY E1518			Kraus	3		0700-1900	DP7
T/F OES TF 2803		7/23	SCHINDLER, DANIEL		E-256	0700-1900	DP7
STG TBD						0700-0700	DP7
STG TBD						0700-0700	DP7
CRW2 PVT C-20027 ENTER				16 +/-	C-20027	0700-2300	DP7
CRW2 PVT C-20029 FRANCO			RASCH, LEO	20	C-20029	0700-2300	DP7
CRW2 TBD						0700-0700	DP7
CRW2 TBD						0700-0700	DP7
DOZ PVT E-20056 PRO			NORTON, TRACEY		E-20056	0700-0700	DP7
DOZ PVT E-20057 PRO			NORTON, TRACEY		E-20057	0700-0700	DP7
DOZ PVT E-20064 TREACH			KLAUER, CONNER	2	E-20064	0700-0700	DP7

6. Work Assignments:
 Prepare structures and roads for potential fire impacts.
 Patrol for and direct attack spot fires.

7. Special Instructions:
 DP7 located at South Kidder Creek Road and HWY 3.

8. Communications

Name	Ch	Function	Rx Freq	Rx Tone	Tx Freq	Tx Tone	Mode	Notes
NIFC C10	2	COMMAND	170.4125	(T3) 131.8	165.9625	(T3) 131.8	A	Quartz Lookout
VFIRE 25	P3.11	TACTICAL	154.2875	(T6) 156.7	154.2875	(T6) 156.7	A	
A/G TAC	14	A/G TAC	168.3750	0.0	168.3750	0.0	A	Overhead use only
CALCORD	15	TACTICAL	156.0750	(T6) 156.7	156.0750	(T6) 156.7	A	
AIRGUARD	16	A/G	168.6250	0.0	168.6250	(T1) 110.9	A	

9. Prepared by: Name: M. Yeun/S. Frank(T)/T.Hullquist(T) RESL

Signature:

ICS 204 Date/Time: 7/12/2024 2200 Personnel Count: 124

ICS 205 - INCIDENT RADIO COMMUNICATIONS PLAN

1. Incident Name: Shelly Branch XX / Contingency Incident Channels	2. Date/Time Prepared Date: 07/12/2024 Time: 1930	3. Operational Period: Date To: 07/14/24 Time To: 0700
---	--	---

4. Communications											
Ch#	Function	Name	Assigned To	Rx Freq	Rx Tone	Tx Freq	Tx Tone	Mode	Notes		
1	COMMAND	NIFC C3	ALL DIVS	170.4250	(T3) 131.8	168.0750	(T3) 131.8	A	English Peak		
2	COMMAND	NIFC C10	ALL DIVS	170.4125	(T3) 131.8	165.9625	(T3) 131.8	A	Quartz Lookout		
3	COMMAND	NIFC C11	ALL DIVS	170.6875	(T3) 131.8	166.5750	(T3) 131.8	A	Whiskey Butte		
4	COMMAND	NIFC C12	ALL DIVS	173.0375	(T3) 131.8	167.3250	(T3) 131.8	A	Helispot 5		
5	TACTICAL	NIFC T1	DIV E	168.0500	(T3) 131.8	168.0500	(T3) 131.8	A			
6	TACTICAL	NIFC T2	DIV F	168.2000	(T3) 131.8	168.2000	(T3) 131.8	A			
7	TACTICAL	NIFC T3	DIV G	168.6000	(T3) 131.8	168.6000	(T3) 131.8	A			
8	TACTICAL	NIFC T4	DIV T	166.7250	(T3) 131.8	166.7250	(T3) 131.8	A			
9	TACTICAL	NIFC T5	NORTH CONTINGENCY	166.7750	(T3) 131.8	166.7750	(T3) 131.8	A			
10	TACTICAL	NIFC T6	SOUTH CONTINGENCY	168.2500	(T3) 131.8	168.2500	(T3) 131.8	A			
11	TACTICAL	VTAC 12	EAST CONTINGENCY	154.4525	(T6) 156.7	154.4525	(T6) 156.7	A			
12	TACTICAL	VTAC 13	UNASSIGNED	158.7375	(T6) 156.7	158.7375	(T6) 156.7	A	Unassigned		
13	A/G CMD	A/G CMD	ALL DIVS	166.6000	0.0	166.6000	0.0	A			
14	A/G TAC	A/G TAC	ALL DIVS	168.3750	0.0	168.3750	0.0	A	Overhead use only		
15	TACTICAL	CALCORD	ALL DIVS	156.0750	(T6) 156.7	156.0750	(T6) 156.7	A	Medical Evac Tone 6		
16	A/G	AIRGUARD	ALL DIVS	168.6250	0.0	168.6250	(T1) 110.9	A	Emergency Use Only		
17											
18											
19											
20	A/G	AIRGUARD	ALL DIVS	168.6250	0.0	168.6250	(T1) 110.9	A			

5. Special Instructions

6. Prepared by (Communications Unit Leader): Name: C.Perry	Signature: 	Date/Time: 07/12/24
ICS 205 - CONTROLLED UNCLASSIFIED INFORMATION/BASIC		NIMS IAP 1930

ICS 205 - INCIDENT RADIO COMMUNICATIONS PLAN

1. Incident Name: Shelly IA
Page 2

2. Date/Time Prepared
 Date: 07/12/2024
 Time: 1930

3. Operational Period:
 Date From: 07/13/24
 Date To: 07/14/24
 Time From: 0700
 Time To: 0700

4. Communications		Name	Assigned To	Rx Freq	Rx Tone	Tx Freq	Tx Tone	Mode	Notes
Ch#	Function								
1	DISPATCH	FS KNF	Dispatch	171.5250	0.0	165.4125	OST	A	Dispatch
2	COMMAND	KNF Salmon	IA COMMAND	172.4000		164.1250	OST	A	
3	COMMAND	KNF River	IA COMMAND	172.2500		165.0750	OST	A	
4	TACTICAL	R5 T4	IA TACTICAL	166.5500	0.0	166.5500	0.0	A	
5	A/G	AG-43	IA AG	167.6000	0.0	167.6000	0.0	A	
6	DISPATCH	SKU L	IA COMMAND	151.3250	(T6) 156.7	159.3600	OST	A	
7	TACTICAL	CDF T9	IA TACTICAL	151.3850	(T16) 192.8	151.3850	(T16) 192.8	A	
8	TACTICAL	CDF T10	IA TACTICAL	151.4000	(T16) 192.8	151.4000	(T16) 192.8	A	
9	A/G	CDF A/G1	IA AG	151.2200	(T16) 192.8	151.2200	(T16) 192.8	A	
10									
11									
12									
13									
14	A/G TAC	A/G TAC	ALL DIVS	168.3750	0.0	168.3750	0.0	A	
15	TACTICAL	CALCORD	ALL DIVS	156.0750	(T6) 156.7	156.0750	(T6) 156.7	A	
16	A/G	AIRGUARD	EMERGENCY	168.6250	0.0	168.6250	(T1) 110.9	A	
17									
18									
19	TACTICAL	CALCORD	MEDICAL	156.0750	(T6) 156.7	156.0750	(T6) 156.7	A	Medical Evac Tone 6
20	A/G	AIRGUARD	Emergency	168.6250	0.0	168.6250	(T1) 110.9	A	Emergency Use Only

5. Special Instructions


6. Prepared by (Communications Unit Leader): Name: C.Perry
 Signature: 
 NIMS IAP Date/Time: 07/12/24 1930

ICS 205 - INCIDENT RADIO COMMUNICATIONS PLAN

1. Incident Name: Shelly Branch X / Structure Group
2. Date/Time Prepared: Date: 07/12/2024 Time: 1930
3. Operational Period: Date From: 07/13/24 Date To: 07/14/24
 Time From: 0700 Time To: 0700

4. Communications										
Ch#	Function	Name	Assigned To	Rx Freq	Rx Tone	Tx Freq	Tx Tone	Mode	Notes	
1	COMMAND	NIFC C3	ALL DIVS	170.4250	(T3) 131.8	168.0750	(T3) 131.8	A	English Peak	
2	COMMAND	NIFC C10	ALL DIVS	170.4125	(T3) 131.8	165.9625	(T3) 131.8	A	Quartz Lookout	
3	COMMAND	NIFC C11	ALL DIVS	170.6875	(T3) 131.8	166.5750	(T3) 131.8	A	Whiskey Butte	
4	COMMAND	NIFC C12	ALL DIVS	173.0375	(T3) 131.8	167.3250	(T3) 131.8	A	Helispot 5	
5	TACTICAL	CDF T14	DIV A	159.3075	(T16) 192.8	159.3075	(T16) 192.8	A		
6	TACTICAL	CDF T15	DIV B	151.1825	(T16) 192.8	151.1825	(T16) 192.8	A		
7	TACTICAL	CDF T24	DIV C	151.3325	(T16) 192.8	151.3325	(T16) 192.8	A		
8	TACTICAL	CDF T35	DIV D	151.4675	(T17) 67.0	151.4675	(T17) 67.0	A		
9	TACTICAL	CDF T36	ETNA	159.3225	(T17) 67.0	159.3225	(T17) 67.0	A		
10	TACTICAL	CDF T37	QUARTZ	151.1525	(T17) 67.0	151.1525	(T17) 67.0	A		
11	TACTICAL	VFIRE 25	GREENVIEW	154.2875	(T6) 156.7	154.2875	(T6) 156.7	A		
12	TACTICAL	VFIRE 26	UNASSIGNED	154.3025	(T6) 156.7	154.3025	(T6) 156.7	A		
13	A/G CMD	A/G CMD	ALL DIVS	166.6000	0.0	166.6000	0.0	A	Overhead Use Only	
14	A/G TAC	A/G TAC	ALL DIVS	168.3750	0.0	168.3750	0.0	A		
15	TACTICAL	CALCORD	ALL DIVS	156.0750	(T6) 156.7	156.0750	(T6) 156.7	A	Medical Evac Tone 6	
16	A/G	AIRGUARD	EMERGENCY	168.6250	0.0	168.6250	(T1) 110.9	A	Emergency Use Only	
17										
18										
19										
20	A/G	AIRGUARD	EMERGENCY	168.6250	0.0	168.6250	(T1) 110.9	A	Emergency Use Only	

5. Special Instructions

6. Prepared by (Communications Unit Leader): Name: C.Perry
 Signature: 
 NIMS IAP Date/Time: 07/12/24 1930

AIR OPERATIONS SUMMARY ICS-220

Incident Name / Number
SHELLY

Sunrise 0548 Sunset 2046
Airport A30
Pumpkin 2030

Time Prepared
1700
Shutdown 2030

Date Prepared
7/12/2024
Operational Period - Date
7/13/2024

Prepared By
Dakota Fulks ASGS
Operational Period - Time
0800-2030

General Remarks, Safety Notes, Hazards, Air Operations Special Equipment, etc.
 *All Aircraft orders go to Scott Valley Helibase
 *Be aware of retardant avoidance areas, 300ft away from waterways and bodies of water.
 *Sanitize Buckets before changing water sources.
 *Clear drop arealine before initiating drop sequence.
 *Be cognizant of all overhead and environmental hazards while working with Aircraft.
 *All GPS is to be collected in DD° MM.MMMM'
 *ALL water and retardant picks/drops need to be tracked and recorded
 *Aviation daily cost to: Scottvalleyhb2023@gmail.com
 *Siskiyou County Airport temporary FFA tower in place for all air traffic control.

Helibase Information
Scott Valley Helibase A30
530-468-1294
41 33.395 N
122 51.208 W

Siskiyou Helibase SIY
41 46.530 N
122 28.330 W

Heilbase Information
**day to day changes with sunrise/sunset/pumpkin times
*pumpkin 2030 reflects 07/11/24

Short Haul
3SH
SVHB
Dunsmuir-Mott

Request Procedure for These Aircraft:
Communications/Dispatch on Command.

Incident Frequencies	RX	Tone	TX	Tone	AM/FM	Position	Name	Phone	EQUIPMENT/SUPPLIES
TFR Victor	120.5250		120.5250		AM				
Rotor Victor	132.5750		132.5750		AM	AOBD	Kyle Beinschroth	760-617-9493	
Briefing Victor	125.1250		125.1250		AM	ASGS			
AirTactics	164.7750		164.7750		FM	ASGS-T	Dakota Fulks	530-736-2863	
A/G CMD	166.6000		166.6000		FM	HEBM-SVHB	Lee Stewart	775-220-6364	
A/G TAG	168.3750		168.3750		FM				
TOLC	169.2000		169.2000		FM	HLCO	Matt Lynde	530-919-8673	
DECK	163.1000		163.1000		FM				
AIR GUARD	168.6250		168.6250	110.9	FM	HEBM-SIY	Dennis Cobb	530-526-6994	
CALCORD	156.0750	156.7	156.0750	156.7	FM	ATBM	Matt Libby	530-643-9887	SIY Tanker Base
Siskiyou Tower	128.7750		128.7750			UAO	Tyler Detrick	530-925-9668	

HELICOPTERS - Scott Valley Helibase													
FAA #	TYPE	Make/Model	Helibase	Start	Avail	Remarks	FAA #	TYPE	Make/Model	Airport	Start	Avail	Remarks
503	3	AS350B3E	SVHB	0800	0830	Recon, Bux, PSD, IA	N181EH	3	AS350B3E	SIY	0800	0830	Recon
N353SH	3	AS350B3E	SVHB	0800	0830	Short Haul, Recon, Bux, PSD, IA	N4582D	2	UH-1H	SIY	0800	0830	Bucket
502	3	AS350B3E	SVHB	0800	0830	Recon, Bux, PSD, IA	N5517N	2	UH-1H	SIY	0800	0830	Bucket
532	2	Bell 205A++	SVHB	0800	0830	Bux, Troop transport, Recon	N45917	1	S-61	SIY	0800	0830	Tanked
N357KA	1	Kmax	SVHB	0800	0830	Bux, Cargo	N805PJ	1	UH-60	SIY	0800	0830	Bucket
N675TH	1	Kmax	SVHB	0800	0830	Bux, Cargo	N805BH	1	UH-60	SIY	0800	0830	Bucket
N39HX	1	Kmax	SVHB	0800	0830	Bux, Cargo	N517MB	1	UH-60	SIY	0800	0830	Bucket
N40HX	1	Kmax	SVHB	0800	0830	Bux, Cargo	N6962R	1	S-64	SIY	0800	0830	Tanked
							G941	1	UH-60	106			24 hour hoist

FIXED WING AA/HLCO													
FAA #	Call Sign	Make/Model	Base	Start	Avail	Remarks	FAA #	TYPE	Make/Model	Airport	Start	Stop	Remarks
N32WS	AA05	AC890	SIY	0800	0830		N491NC	3	Bell 429	SIY	1800	0600	HLCO
N14HX	507	Bell 407HP	SIY	0800	0830	HLCO, IR	607	1	S701	SIY	1800	0600	
							N238PJ	1	CH-47	SIY	1800	0600	

HELICOPTER EXTRACTION OPERATIONS

The intent of helicopter insertion/extraction operations is to facilitate the movement of personnel to and from inaccessible areas. These operations are not meant to be a medical transport resource; life flight and ground transportation should always be ordered in addition to the extraction aircraft and crew.

ORDERING:

- On-scene EMT and/or Incident within Incident IC determines that an extraction helicopter is needed and places the order through the pre-established procedures:
 - Division Supervisor
 - Incident Communications
 - Dispatch Center
- When ordering extraction aircraft provide the following information:
 - Location (Lat/Long) of patient
 - Known Hazards
 - Wind Speed and Direction
 - Terrain
 - Incident Updates

SITE SELECTION:

- The helicopter crew will confirm the extraction location when they arrive on scene. However, a general rule is any clearing that is 10'x10' with visible sight lines to the sky is a suitable extraction site.
- If the terrain is steep, excavating a platform or shelf can make it easier for patient packaging.

QR Code-Short-haul Site Selection Video



CONSIDERATIONS:

- Short-haul and hoist are safe and efficient operations for extracting injured personnel of any severity including "Green" patients.
- Ensure area is clear of non-essential items, hazards, and personnel.
- Rotor wash may affect overhead hazards and blowing dust/debris can create brown out conditions or influence fire behavior.
- Aerial Supervision is valuable for coordinating aviation medevac/extraction missions and should be ordered if available and not currently present.
- The aircrew will make the final assessment of the mission. Always have a contingency plan in case a helicopter cannot complete the request.

DEFINITIONS:

Rescue Hoist: A cable winching device mounted to the helicopter that can lower/raise persons attached to a cable.

- Common cable lengths are 250-300 feet.

Short-haul: To insert or extract one or more persons suspended on a fixed line beneath a helicopter.

- Common short-haul line lengths are 100, 150, and 250 feet. The lines can also be connected for a longer line if the situation requires it.

FINANCE MESSAGE

Fire Name: Shelly Fire
Fire Number: CA-KNF-005159
Accounting Code: P5 R18J (0505)
Email: 2024.shelly.finance@firenet.gov
Incident Phone: 530-536-0781

Finance Documents Needed upon "Check In" (If Not Already Submitted):

Please email these documents or scan the QR Code below, attach & submit.			
FED Equipment/ Crews: <ul style="list-style-type: none"> Manifest - showing employment type (GS or WG) or AD rates if applicable 	Overhead: <ul style="list-style-type: none"> AD/Casual Hire Form If regular Agency please ensure "GS" or "WG" is written on your CTR 	Contract Equipment/ Contract Crews: <ul style="list-style-type: none"> Agreement Manifest Resource Order Inspections 	Cooperator: <ul style="list-style-type: none"> Cooperative Agreement Resource Order

When emailing finance:

- Overhead/FED: *subject line:* TIME, Resource #, Resource Name
- Equipment/Cooperator: *subject line:* EQTR, Resource #, Resource Name

Prior to your demob date, please contact Finance *via email* to expedite the demob process.
Upon submittal of your final CTR/Shift Tickets, Finance will email you copies of your pay documents for review and signature.

Local Government Resources & CalOES on CFAA also check-in here:



**Rick Young CalOES AREP
616-541-3165**



FINANCE MESSAGE



TIME Process

Shift Tickets: Line supervisors complete for Hired Equipment and submit hard copy to TIME, OR complete an e-Shift Ticket online at <https://shifftickets.fire.ca.gov> AND provide a hard copy to TIME. Shift Ticket example on page 35 of IAP.

Personnel Time: All Cal Fire personnel check in to TIME trailer located at fairgrounds in Yreka.

Hired Equipment: All Hired Equipment resources check in to TIME trailer located at fairgrounds in Yreka with a copy of your agreement.

Local Government: Check-in with OES Rep, located at the fairgrounds in Yreka. See page 34 of IAP.

COMP/CLAIMS

Report all comp claims to FINANCE.

AO-341 Hotel Rosters

Please sign the roster for every night.

Feeding

Feeding is provided at the Yreka fairgrounds.

Off-Site feeding is approved for DINNER ONLY for personnel lodging in the following locations:

MEDFORD			ASHLAND	Mt. Shasta
Elmer's 2000 Biddle Rd. Medford, OR	Elmer's 68 E Stewart Ave. Medford, OR	Applebee's 1388 Biddle Rd. Medford, OR	Oak Tree Bar & Grill 2510 Ashland St. Ashland, OR	Black Bear Diner 401 W Lake St. Mt. Shasta, CA



CAL FIRE SISKIYOU UNIT



Finance Section – Shift Ticket Examples

24HR LINE RESOURCE - 2 OPERATORS

EMERGENCY SHIFT TICKET and EVALUATION FORM The responsible Government Officer will complete this form each shift.						Contractor Name DIRT PUSHERS LLC			
Incident or Project Name SHELLY		Incident Number CAKNF005159		Request Number E-20007		Operator #1 (DAY SHIFT) FIRST & LAST		Operator #2 (NIGHT SHIFT) FIRST & LAST	
Agreement Number SHU 0012345678						Operator Furnished By: <input checked="" type="checkbox"/> Contractor <input type="checkbox"/> Government			
Equipment Make 2002 CATERPILLAR			Equipment Model / Type D6N XL, TYPE 2 - E			Operating Supplies Furnished By: <input checked="" type="checkbox"/> Contractor <input type="checkbox"/> Government			
Serial Number COMPLETE SERIAL #			License Number			Equipment Status <input checked="" type="checkbox"/> Inspected <input checked="" type="checkbox"/> Under Agreement			
Equipment Use						Released by Government <input type="checkbox"/>			
Date Mo / Day						Withdrawn by Contractor <input type="checkbox"/>			
Date		Start		Stop		(Circle) Hours		Days / Miles	
6/18		0701		2400		17		DIV X	
6/19		0001		0700		7		DIV X	
Vendor Rating						Govt. Rep. Name and Position – PRINT			
Poor*		Avg.		Good		Exc.		N/A	
Met Performance Expectations						Print Your Name			
Equipment in Safe Working Condition						Govt. Rep. Signature			
Operator Skill Level						<i>Your Signature</i>			
Operates Safely						Contractor Signature			
Operator's Cooperation Level						<i>Contractor Signature</i>			
Overall Performance						Date 7/9/2024		Time 0700	
* NOTE: any rating of POOR requires an explanation in Comment Section.						CAL FIRE 297			
** Final evaluation or for more documentation, use a CALFIRE Form 230 or equivalent.						(Rev 3-2011)			

12HR LINE RESOURCE - 1 OPERATOR

EMERGENCY SHIFT TICKET and EVALUATION FORM The responsible Government Officer will complete this form each shift.						Contractor Name TRANSPORTS EXPRESS			
Incident or Project Name SHELLY		Incident Number CAKNF005159		Request Number E-20008		Operator #1 (DAY SHIFT) FIRST & LAST		Operator #2	
Agreement Number SHU 0012345678						Operator Furnished By: <input checked="" type="checkbox"/> Contractor <input type="checkbox"/> Government			
Equipment Make 1999 PETERBILT 379			Equipment Model / Type TRANSPORT 18 WHEEL			Operating Supplies Furnished By: <input checked="" type="checkbox"/> Contractor <input type="checkbox"/> Government			
Serial Number LAST 8 OR FULL VIN			License Number 12345A1			Equipment Status <input checked="" type="checkbox"/> Inspected <input checked="" type="checkbox"/> Under Agreement			
Equipment Use						Released by Government <input type="checkbox"/>			
Date Mo / Day						Withdrawn by Contractor <input type="checkbox"/>			
Date		Start		Stop		(Circle) Hours		Days / Miles	
4/1		0701		1900		12		DIV X	
Vendor Rating						Govt. Rep. Name and Position – PRINT			
Poor*		Avg.		Good		Exc.		N/A	
Met Performance Expectations						Print Your Name			
Equipment in Safe Working Condition						Govt. Rep. Signature			
Operator Skill Level						<i>Your Signature</i>			
Operates Safely						Contractor Signature			
Operator's Cooperation Level						<i>Contractor Signature</i>			
Overall Performance						Date 7/9/2024		Time 1900	
* NOTE: any rating of POOR requires an explanation in Comment Section.						CAL FIRE 297			
** Final evaluation or for more documentation, use a CALFIRE Form 230 or equivalent.						(Rev 3-2011)			



If you would like to be part of our Cooperators Team, use this QR code to have your name on our mailing list and Cooperators Contact Sheet. You can get our meeting updates, agendas and IAP's.



If You Are A Trainee On The Assignment



Make Sure to

Register With Training

John Fakehany Jacobie Waters

TNSP TNSP (t)

909-693-9748 530-414-3470

JULY 13, 2024

HUMAN RESOURCE MESSAGE

- Caterer Hours:** **Breakfast: 0530 - 0900**
- Dinner: 1800 - 2130**
- Shower:** **0500-1200, 1400 – 2300**
- Supply:** **0630-2130**
- Laundry:** **0500-2200**
- Fuel Tender** **0600-1300, 1500-2200**

Be safe ~ Have a great shift.
Feel free to call/text or come by the HRSP trailer if you have questions or concerns.

Adam Alvarez -- (HRSP) - (707) 373-8715

NFFE Union Contact:

Gay Baxter Title: Local 1865 Vice President

Email: gay.baxter@usda.gov

Phone: Cell -- (530) 598-6095

US Postal Service -- General Delivery -- (530) 467-3981 -- 9:00am -- 5:00pm M-F

Your Name -- Bring I.D.

119 Diggles

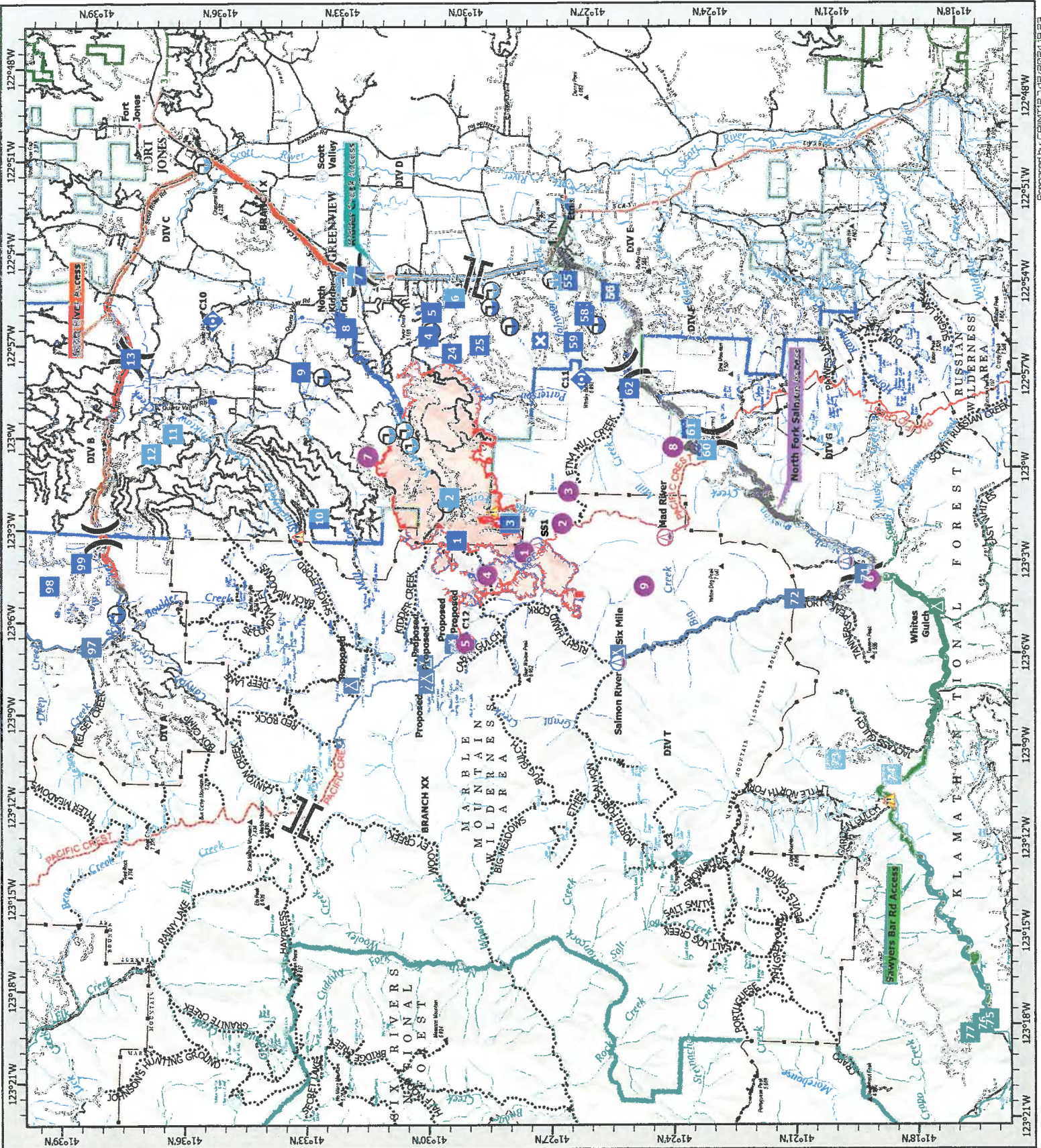
General Delivery

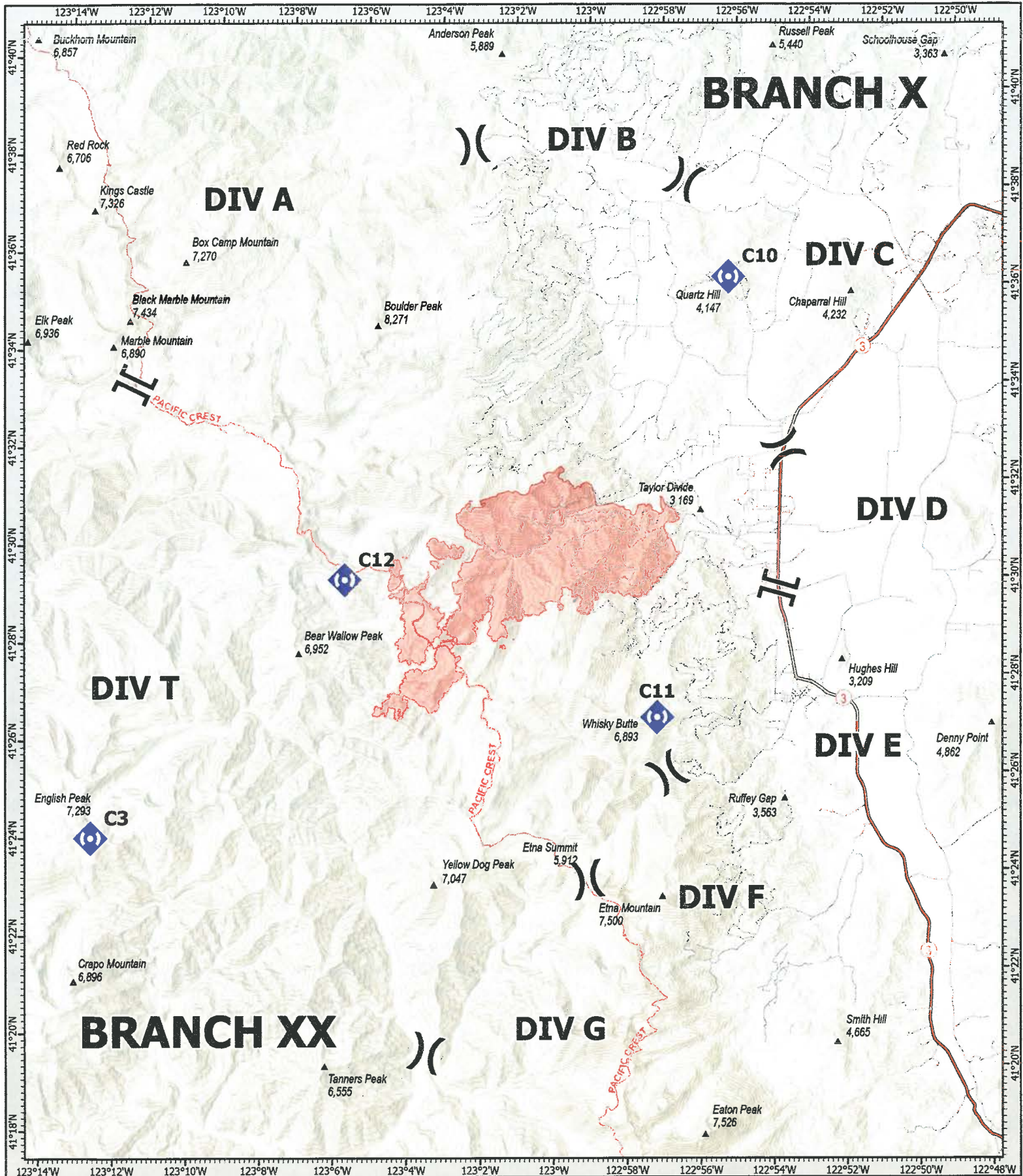
Etna Ca, 96027

TRANSPORTATION
SHELLEY
07/13/24



- Mobile Retardant Base
- Helispot
- Helibase
- Sling Site
- Division Break
- Branch Break
- Incident Command Post
- Drop Point
- Closure
- Camp
- Staging Area
- Value at Risk
- Landmark
- Gate
- Bridge
- Structure Wrap
- Repair Point
- Fence - Cut/Damaged
- Culvert
- Repeater
- Safety Zone
- Hazard
- Draft Site
- Hydrant
- Contained
- Uncontained
- Wildfire Daily Fire Perimeter
- Road - Light Duty - Dirt
- Road - Light Duty - Gravel
- Road - Light Duty - Paved
- Road - Light Duty - Unspecified
- Road - Unimproved
- Secondary Highway
- Road, Paved
- Road, Unspecified
- Road, Dirt
- National Trail
- Trail
- USFS Wilderness
- USFS Administrative Forest
- Non Forest
- Transportation Routes
- Kidder Creek Access
- North Fork Salmon Access
- Sawyers Bar Rd Access
- Scott River Access



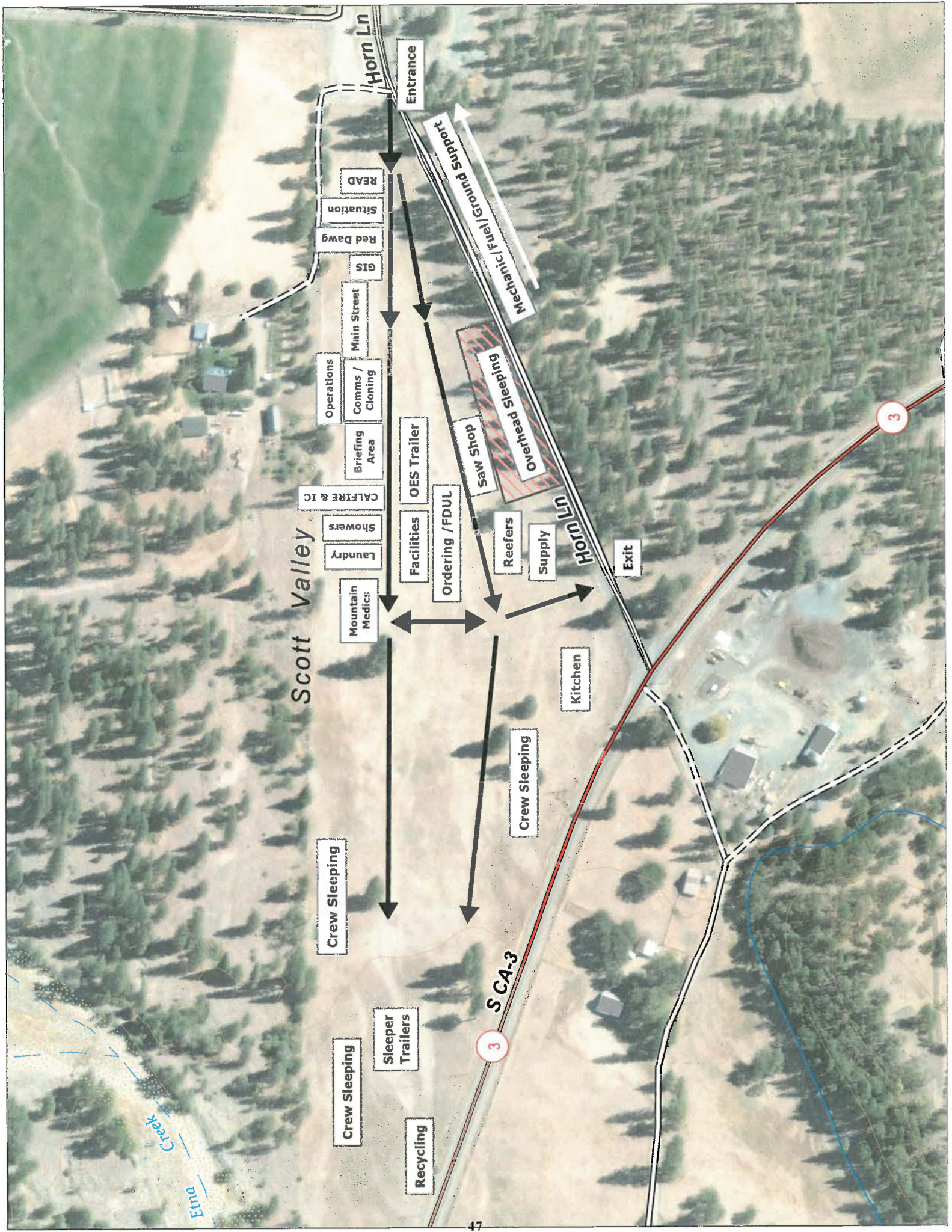


- () Division Break
- [] Branch Break
- Ⓛ Repeater
- ▭ Wildfire Daily Fire Perimeter
- ▲ Gap; Summit

COMMUNICATIONS
SHELLY
 CA-KNF-005159
 07/13/24



1:100,000 NAD83 CA ALBERS
 0 1 2 4 Miles
 Prepared by: CAIMT12 7/12/2024 18:24



Scott Valley

Horn Ln

Entrance

Mechanic/Fuel/Grond Support

READ

Situation

Red Dawg

GIS

Main Street

Operations

Comms / Cloning

Briefing Area

CALFIRE & IC

Showers

Laundry

Mountain Medics

OES Trailer

Ordering / FDUL

Facilities

Saw Shop

Overhead Sleeping

Reefers

Supply

Horn Ln

Exit

Kitchen

Crew Sleeping

Crew Sleeping

Crew Sleeping

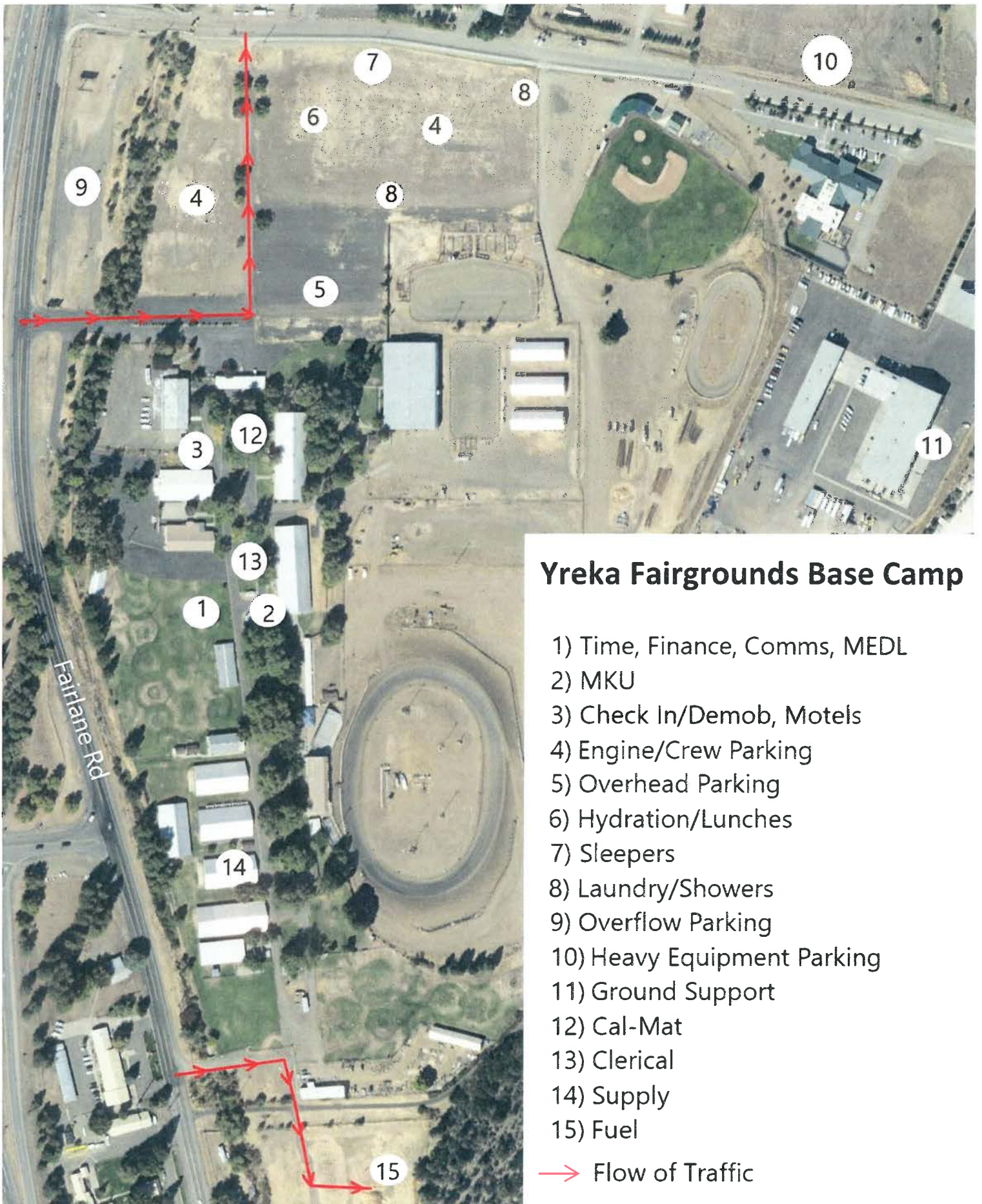
Sleeper Trailers

Recycling

SCA-3

Etna Creek

3



Yreka Fairgrounds Base Camp

- 1) Time, Finance, Comms, MEDL
- 2) MKU
- 3) Check In/Demob, Motels
- 4) Engine/Crew Parking
- 5) Overhead Parking
- 6) Hydration/Lunches
- 7) Sleepers
- 8) Laundry/Showers
- 9) Overflow Parking
- 10) Heavy Equipment Parking
- 11) Ground Support
- 12) Cal-Mat
- 13) Clerical
- 14) Supply
- 15) Fuel

→ Flow of Traffic

Shelly Incident CA-KNF-005159
 1712 Fairlane Rd, Yreka CA 96097

CIMT 12 Line Order Worksheet



Date, Time, and From Who Order Was Placed:	Order Number:	Delivery Location and Time (Div, LZ, DP, Lat/Long, etc)	Delivery Mode (Delivery, Pickup, Helo, etc.):
Order received in Communications by: Delivery by who & time and/or date scheduled. Detailed instructions and notes if needed:			
Note: Items match reference cards carried by Team 12 operations personnel			
Item #	Description		Quantity Ordered
1	Mark III Pump Kit: Contains frame and Alice Pack with Straps, 1ea 10' x 1.5" Hard Suction, Instructions, Tool Roll Kit, 1ea 35GPM Nozzle, 1ea 60GPM Nozzle, 1ea Twin Tip Nozzle 1", 1qt two cycle oil, Packsack-waterproof w/straps, Collapsible Bucket, Hand Primer, 1ea 10' x 20' Plastic Sheeting, 1ea 5 Gallon Fuel Can with Adapters, 1ea 1.5" Check and Bleeder Valve, 1ea 1.5" Foot Valve, 1ea 1.5" Pressure Relief Valve, 1ea 1.5" Gated Wye, 1ea Spanner Wrench, P-Cord		
2	UNI-Engine (Klump Pump) Dimensions: 7' wide x 10' Long, 1000 Gallon Capacity, 13 HP, 90 GPM, @ 110 psi, Unleaded Fuel, 24' of 2" Hard Suction, 1000' of 1.5", 800' of 1", 400' 3/4" Hose, Self-leveling System with Manual Jacks, 1600 lbs. Fully Equipped w/Type-2 Helo Cables, 5 Gallons of Foam with proportioner		
3	Norton Hose Kit 1 1/2" Hose - 5000 Feet, 1" Hose - 2000 Feet, 3/4" Hose 2000 Feet, 1 1/2" Gated Wye's - 25ea, 1 1/2" to 1" Reducers - 25 ea, 1" to 3/4" Reducers 25 ea, 1" Combination Nozzles - 25 ea, 3/4" Nozzles - 25 ea, Hose Clamps - 3 ea, Class A Foam - 25 Gallons, 1 1/2" Combo Nozzles - 5 ea, 3/4" Wye's - 25 ea		
4	Half-Norton Hose Kit 1 1/2" Hose, 2500 Feet, 1" Hose, 1000 Feet, 3/4" Hose, 1000 Feet, 1 1/2" Gated Wye's, 12ea, 1 1/2" to 1" Reducers, 12ea, 1" to 3/4" Reducers, 12ea 1" Combo Nozzles, 12 ea, 3/4" Nozzles, 12ea, Hose Clamps - 3 ea, Class A Foam - 10 Gallons, 1 1/2" Combo Nozzles - 2 ea, 3/4" Wye's - 12 ea		
5	Coyote Package (For a 20 Person Crew - Approx 785lbs) 50 gal Water - 12 cases, 25 gal Gatorade - 6 cases, 3 Cases of MRE's, 40ea Sack Lunches, 1 case - AA Batteries, 5 Rolls Toilet Paper, 20 GL Gasoline, 4 GL Bar and Chain Oil, 1/2 Box Trash Bags, 25ea Bath-In-A-Bags, 25ea Towel, Cleansing 12" x 30", 2 to 4ea Gold Bond, 40oz. 2-Cycle Mix,		
6	1000 foot hose lay kit includes the following: 10ea 100' x 1 1/2" Hose, 10ea 100' x 1" Hose, 10ea 1 1/2" Gated Wyes, 10ea 1 1/2" to 1" Reducers, 10ea 1" Nozzles		
7	2000 foot hose lay kit includes the following: 20ea 100' x 1 1/2" Hose, 20ea 100' x 1" Hose, 20ea 1 1/2" Gated Wyes, 20ea 1 1/2" to 1" Reducers, 20ea 1" Nozzles		
8	3000 foot hose lay kit includes the following: 30ea 100' x 1 1/2" Hose, 30ea 100' x 1" Hose, 30ea 1 1/2" Gated Wyes, 30ea 1 1/2" to 1" Reducers, 30ea 1" Nozzles		

CI/IMT 12 Line Order Worksheet - Page 2

Item #	Description	NFES #	Quantity Requested	Item #	Description	NFES #	Quantity Requested
9	Hose (50') Garden, 3/4"	1016		34	Gas Unleaded (Gallons)		
10	Hose (100'), 1"	0966		35	Oil 2 Cycle (Pints)	0344	
11	Hose (100'), 1 1/2"	0967		36	Bar oil (Qts)	1869	
12	Nozzle, Garden, 3/4"	0136		37	Drip torch - ea	0241	
13	Nozzle, Forester, 1"	0024		38	Drip torch mix 3.5 : 1.5 (gallon)		
14	Nozzle, KK Type, 1"	1081		39	Fusees BX	0105	
15	Nozzle, KK Type, 1 1/2"	1082		40	Flare Gun Rounds (12/BX)	0687	
16	Wye, Gated, 3/4"	0739		41	Cartridge #6 purple (box)	0372	
17	Wye, Gated, 1"	0839		42	Batteries "AA" Pkg, (24/PKG)/BX	0030	
18	Wye, Gated, 1 1/2"	0883		43	Ribbon, Flagging (Specify Color)		
19	Inline Tee, 1" x 1" x 3/4"	1809		44	Water, Cubies		
20	Inline Tee 1" x 1" x 1"	2240		45	Water, Bottled, Cases		
21	Inline Tee 1 1/2" X 1"	0731		46	Gatorade		
22	Reducer 1" X 3/4"	0733		47	MRE's (12/BX)	1842	
23	Reducer 1 1/2" to 1"	0009		48	Heavy Mill Plastic	0283	
24	Increase, 3/4" X 1"	2235		49	Washcloth, waterless, Cleansing	0206	
25	Increase, 1" X 1 1/2"	0416		50	Wrap, Structure 54" x 300'	0881	
26	Foam 5 gal	1145		51	Sprinkler Kit		
27	Foam 4 oz (For Backpack Pump)	3400		52	Mark 3 Pump		
28	Backpack Pump	1197		53	Mark 3 Pump Kit w/10 gal Mix Fuel		
29	Pumpkin (Gallons?)			54	Chainsaw Kit	0340	
30	Porta-Tank (Gallons?)			55	Mop-Up Kit, 3-wand	0772	
31	Shovel	170		56	Pump Kit, Lightweight, 2-Cycle	0670	
32	Combl Tool	146		57	Gas, raw and 2 qts 2-Cycle Oil, ea		
33	McCloud	296		58	Lightweight Pump Kit - Cache w/5 gal fuel		
				59	Gas, raw, 1 gallon w/ 1qt 2-cycle oil, ea		

Notes:

MEDICAL PLAN (ICS 206 WF) CIIMT 12

1. Incident Name				2. Operational Period							
SHELLY INCIDENT CA-KNF-005159				Date/Time: 07/13/2024 – 07/14/2024 0700-0700							
3. EMS / Ambulance Services/Aid Stations											
Name		Location		Frequency/Phone		Advanced Life Support (ALS) Yes No					
MT. SHASTA AMBULANCE		YREKA, CA		Shelly Communications		X					
ETNA AMBULANCE		ETNA, CA		Shelly Communications		X					
MT. MEDICS Aid Station		ICP		530-859-2799		X					
4. Air Rescue / Air Ambulance Services											
Name		Phone		Type of Aircraft & Capability							
KRASSEL (N353SH)		Shelly Communications		SHORT HAUL BLS							
MERCY AIR		Shelly Communications		AIR AMBULANCE, 24 HR ALS, NO HOIST							
PHI		Shelly Communications		AIR AMBULANCE, 24 HR ALS, NO HOIST							
REACH AIR		Shelly Communications		AIR AMBULANCE, 24 HR ALS, NO HOIST							
CHP		Shelly Communications		0600-0230, ALS, DAY HOIST ONLY, NO SHORT HAUL							
COAST GUARD		Shelly Communications		24 HR HOIST, BLS ONLY							
National Guard (G841)		Shelly Communications		24 HR HOIST, BLS ONLY							
5. Hospitals (all times estimated from incident location)											
Name & Level		GPS Datum – WGS 84 Degrees Decimal Minutes		Travel Time Air Gnd		Phone		Helipad Yes No		Address	
UC DAVIS MEDICAL CENTER LEVEL 1 TRAUMA		Lat:	33°33.292'N		1.5hr	6hr	916-734-3790 ER Desk	X		2315 Stockton Blvd. Sacramento, CA 95817	
		Long:	121°27.326'W								
MERCY MEDICAL CENTER Redding LEVEL 2 TRAUMA		Lat:	40°34.325'N		40m	3hr	530-225-7200 ER Desk	X		2175 Roseline Ave. Redding, CA 96001	
		Long:	122°23.700'W								
ASANTE ROGUE REGIONAL MEDICAL CENTER-LEVEL 2		Lat:	42°19.07'N		20m	2hr	541-789-7132 ER Desk	X		2825 E. Barnette Rd. Medford, OR 97504	
		Long:	122°49.90'W								
MERCY MEDICAL CENTER Mt. Shasta LEVEL 3 TRAUMA		Lat:	41°19.111'N		30m	2hr	530-926-9360 ER Desk	X		914 Pine St. Mt. Shasta. CA 96067	
		Long:	122°19.200'W								
FAIRCHILD MEDICAL CENTER LEVEL 4 TRAUMA		Lat:	41°43.181'N		20m	1.5h	530-841-6292 ER Desk	X		444 Bruce St. Yreka, CA 96097	
		Long:	122°38.757'W								
6. Division / Crew Emergency Pre-Plan								<i>Update and discuss with assigned resources daily.</i>			
Fireline EMT / Medic's Division / Branch Location											
Air Hoist site location site: Lat: / Long: / Elevation:											
Helispot: Lat: / Long: / Elevation:											
7. Prepared By (Medical Unit Leader)				8. Date/Time		9. Reviewed By (Safety Officer)				10. Date/Time	
<i>Ron Sandler</i> MEDL				07/12/2024 1600		<i>Michael Seymour</i> SOFC				07/12/2024 1600	

MEDICAL PLAN (ICS 206 WF) CIIMT 12

Medical Incident Report																													
<p>FOR A NON-EMERGENCY INCIDENT, WORK THROUGH CHAIN OF COMMAND TO REPORT AND TRANSPORT INJURED PERSONNEL AS NECESSARY.</p> <p>FOR A MEDICAL EMERGENCY: IDENTIFY ON SCENE INCIDENT COMMANDER BY NAME AND POSITION AND ANNOUNCE "MEDICAL EMERGENCY" TO INITIATE RESPONSE FROM IMT COMMUNICATIONS/DISPATCH.</p>																													
<p>Use the following items to communicate situation to communications/dispatch.</p>																													
<p>1. CONTACT COMMUNICATIONS / DISPATCH (Verify correct frequency prior to starting report) <i>Ex: "Communications, Div. Alpha. Stand-by for Emergency Traffic."</i></p> <p>2. INCIDENT STATUS: Provide incident summary (including number of patients) and command structure. <i>Ex: "Communications, I have a Red priority patient, unconscious, struck by a falling tree. Requesting air ambulance to Forest Road 1 at (Lat./Long.) This will be the Trout Meadow Medical, IC is TFLD Jones. EMT Smith is providing medical care."</i></p>																													
Severity of Emergency / Transport Priority	<input type="checkbox"/> RED / PRIORITY 1 Life or limb threatening injury or illness. Evacuation need is IMMEDIATE <i>Ex: Unconscious, difficulty breathing, bleeding severely, 2° – 3° burns more than 4 palm sizes, heat stroke, disoriented.</i> <input type="checkbox"/> YELLOW / PRIORITY 2 Serious Injury or illness. Evacuation may be DELAYED if necessary. <i>Ex: Significant trauma, unable to walk, 2° – 3° burns not more than 1-3 palm sizes.</i> <input type="checkbox"/> GREEN / PRIORITY 3 Minor Injury or illness. Non-Emergency transport <i>Ex: Sprains, strains, minor heat-related illness.</i>																												
Nature of Injury or Illness & Mechanism of Injury			Brief Summary of Injury or Illness <i>(Ex: Unconscious, Struck by Falling Tree)</i>																										
Transport Request			Air Ambulance / Short Haul/Hoist Ground Ambulance / Other																										
Patient Location			Descriptive Location & Lat. / Long. (WGS84)																										
Incident Name			Geographic Name + "Medical" <i>(Ex: Trout Meadow Medical)</i>																										
On-Scene Incident Commander			Name of on-scene IC of Incident within an Incident <i>(Ex: TFLD Jones)</i>																										
Patient Care			Name of Care Provider <i>(Ex: EMT Smith)</i>																										
<p>3. INITIAL PATIENT ASSESSMENT: Complete this section for each patient as applicable (start with the most severe patient)</p> <p>Patient Assessment: See IRPG PAGE 106</p> <p>Treatment:</p>																													
<p>4. TRANSPORT PLAN:</p> <p>Evacuation Location (if different): <i>(Descriptive Location (drop point, intersection, etc.) or Lat. / Long.)</i> Patient's ETA to Evacuation Location:</p> <p>Helispot / Extraction Site Size and Hazards:</p>																													
<p>5. ADDITIONAL RESOURCES / EQUIPMENT NEEDS:</p> <p><i>Example: Paramedic/EMT, Crews, Immobilization Devices, AED, Oxygen, Trauma Bag, IV/Fluid(s), Splints, Rope rescue, Wheeled litter, HAZMAT, Extrication :</i></p>																													
<p>6. COMMUNICATIONS: Identify State Air/Ground EMS Frequencies and Hospital Contacts as applicable</p> <table border="1" style="width: 100%; border-collapse: collapse;"> <thead> <tr> <th style="width: 10%;">Function</th> <th style="width: 20%;">Channel Name/Number</th> <th style="width: 15%;">Receive (RX)</th> <th style="width: 15%;">Tone/NAC *</th> <th style="width: 15%;">Transmit (TX)</th> <th style="width: 15%;">Tone/NAC *</th> </tr> </thead> <tbody> <tr> <td>COMMAND</td> <td></td> <td></td> <td></td> <td></td> <td></td> </tr> <tr> <td>AIR-TO-GRND</td> <td></td> <td></td> <td></td> <td></td> <td></td> </tr> <tr> <td>TACTICAL</td> <td></td> <td></td> <td></td> <td></td> <td></td> </tr> </tbody> </table>						Function	Channel Name/Number	Receive (RX)	Tone/NAC *	Transmit (TX)	Tone/NAC *	COMMAND						AIR-TO-GRND						TACTICAL					
Function	Channel Name/Number	Receive (RX)	Tone/NAC *	Transmit (TX)	Tone/NAC *																								
COMMAND																													
AIR-TO-GRND																													
TACTICAL																													
<p>7. CONTINGENCY: Considerations: If primary options fail, what actions can be implemented in conjunction with primary evacuation method? Be thinking ahead. .</p>																													
<p>8. ADDITIONAL INFORMATION: Updates/Changes, etc. .</p>																													
<p>REMEMBER: Confirm ETA's of resources ordered. Act according to your level of training. Be Alert. Keep Calm. Think Clearly. Act Decisively. .</p>																													