

INCIDENT ACTION PLAN SHELLY INCIDENT

CA-KNF-005159
P5 R18J (0505)



OPERATIONAL PERIOD

7/15/2024 0700
to
7/16/2024 0700



Check-In, IAP, Maps,
Demob, Briefing

Monday

Monday

ORGANIZATION ASSIGNMENT LIST (ICS 203)

1. Incident Name: SHELLY		2. Operational Period: Date From: 7/15/2024		Date To: 7/16/2024	
		Time From: 0700		Time To: 0700	
3. Incident Commander(s) and Command Staff:			7. Operation Section:		
IC/UC's	M. Conklin/K. Cunningham		Operations	J. Owings/S. Lauderdale/J. Flores(T)	
Deputy	N. Johnny/P. Russell(T)		Deputy Operations	S. Beacham/J. Fredrick/J. Chester(T)/A. Schultze(T)	
Safety Officer	M. Seymour/M. Lipson/B. Lee(T)		Night Ops	K. Bohall/R. Szczepanek(T)	
Information Officer	L. Sieliet/S. Bishop/D. McMillin(T)		Strategic Ops	E. Zanotto/J. Sohr(T)	
Liaison Officer	J. Martinez/J. Neumann(T)/T. Gonzalez(T)		Branch	X	S. Burns(12)/C. Periera
			Division/Group	A	G. Lowdermilk/S. Rushing (T)
4. Agency/Organization Representatives:			Division/Group	B	C. Markey(12)/J. Rogers(T)
Agency/Organization	Name		Division/Group	C	J. Jones/A. Cholico(T)(12)
USFS	T. McArthur/N. Kelly(T)/D. Carlson(T)		Branch	XX	T. Richter(12)/M. Khazaal(T)
CALFIRE	M. Smith		Division/Group	D	J. Duncan
CDCR	J. Leventon		Division/Group	E	C. Martinelli/S. Pindell(12)
Timber Industries	D. Quigley		Division/Group	F	D. Helgeson/B. Boatman (T)
Karuk Tribe	G. Moon		Branch	XXX	S. Chapman(12)
READ	M. Meneks/C. Maciel(T)		Division/Group	G	A. Luna/R. Flitt(T)
Cultural Specialist	M. Sanchez		Division/Group	M	R. Noxon/J. Bird(T)
BIA	S. Santos/G. Perry		Division/Group	T	J. Airhart
			Branch	Night	TBD
			Division/Group		
			Branch	Contingency	L. Wright
			Division/Group	North	S. Kovacs/J. Stitt(T)
			Division/Group	South	R. DeCamp
			Division/Group	East	S. Clement(12)
			Division/Group		
			Branch	Structure	J. Howard(12)
5. Planning Section:			Division/Group	Etna	R. West(12)
Chief	B. Vergne/G. Ozard/ R. Verdie(T)/J. Saiz(T)		Division/Group	Quartz Valley	M. Milojevich(12)
Deputy	S. Anderson		Division/Group	Greenview	C. Reginatto(12)
Resource Unit	M. Yeun/E. Morgan/S. Frank(T)/T. Hullquist(T)		Division/Group		
Situation Unit	R. Toby/R. Resnick(T)		Branch	FSR	D. Denman(12)
Documentation Unit	RIST		Division/Group		
Demobilization Unit	J. Grisedale		Division/Group		
GISS	B. Hurtado		Division/Group		
FBAN	P. Doyle		Division/Group		
IMET	J. Ruthford/J. O'Brien(T)		Staging Area	Yreka Staging	J. Ravenscroft(12)
Training	J. Fakehany/J. Waters(T)		Air Operations Branch		Director: K. Beinschroth
HRSP	A. Alvarez		Air Support Group Supervisor		D. Fulks(T)
ARA	J. Webster		Air Tactical Group Supervisor		
6. Logistics Section			Siskiyou County Helibase Manager		D. Cobb
Chief	S. Ashbach/S. Irvine/D. Alicea/J. Fox(T)				
Supply Unit	M. Keck		8. Finance/Administration Section:		
Facilities Unit	A. Curley/E. Jensen(T)		Chief	R. Lang/L. Wilson/M. White/B. Stirton/D. Dukart(V)	
Ground Support Unit	C. Syler/J. Lantello(T)		Time Unit	C. Scott/A. Van Atta	
Communications Unit	C. Perry/V. Pugliese(T)		Procurement Unit	P. Wood/R. Smith/R. Kirtland(T)	
Medical Unit	B. Bennewate/R. Sandler/M. Dungan		Comp/Claims Unit	D. McClure	
Food Unit	S. Katanich		Cost Unit	E. Molina(T)	
Prepared By: Name: B. Vergne/G. Ozard		Position/Title: PSC		Signature: 	
ICS 203		Date/Time: 7/14/2024 2300 hours		NIMS IAP	

FIRE WEATHER FORECAST

FORECAST NO. 10

NAME OF INCIDENT: Shelly

PREDICTION FOR: Monday July 15, 2024

UNIT: Klamath National Forest

TIME AND DATE

SIGNED: Jonathan O'Brien/Julia E. Ruthford

FORECAST ISSUED: 1900 Sunday 7/14/24

Jonathan O'Brien Julia Ruthford - (530) 440-4898
IMET (t) IMET

*** RED FLAG WARNING IN EFFECT 11AM THROUGH 9PM TODAY FOR LIGHTNING ON DRY FUELS ***

WEATHER DISCUSSION: Lingering monsoonal moisture will bring a final round of isolated thunderstorms this afternoon and evening. In addition to a risk of new ignitions from lightning, thunderstorms would bring the potential for strong, gusty and erratic outflow winds, which could channel a substantial distance through the complex terrain in the area. Otherwise, a warm and dry day is expected with temperatures in the 80s and 90s and minimum RHs near to below 20%. Outside of thunderstorms, an onshore pressure gradient will bring SW-NW ridge level and down-canyon winds this afternoon & evening. Recoveries will remain poor to at best fair tonight.

MONDAY:

WEATHER: Isolated dry thunderstorms after 1200. Storms will initiate near and anchor to terrain features then gradually move SW to NE. *Rainfall less than a tenth of an inch, but locally quarter of an inch under cores.*

MAXIMUM TEMPERATURE: Highs ranging from upper 80s along ridges to upper 90s valleys.

MINIMUM RELATIVE HUMIDITY: 9-15% in valleys and 15-21% along ridges.

20 FOOT WINDS:

SW of the PCT – Up-slope winds of 3-5 mph developing late morning will become SW-NW up-canyon 6-12 mph early afternoon with gusts of 14-20 mph possible mid to late afternoon.

NE of the PCT – Up-slope winds of 2-4 mph becoming SE to NE up-canyon 4-6 mph early afternoon then reversing to SW to NW around 1400 and increasing to 10-18 mph with gusts to 20-25 mph late afternoon through the evening along ridges and down-canyon winds of 5 to 7 mph drainage bottoms.

Near any thunderstorms – *Strong outflow winds possible with gusts of 30 to 40 mph.* Directions will be erratic but favoring SE to SW for the strongest gusts.

STABILITY: Smoky valley inversions lifting by early afternoon. Inversion lift may be a couple of hours slower than Sunday. *PyroCumulus development is likely if a strong column forms.*

CHANCE OF THUNDERSTORMS: 35%

SMOKE TRANSPORT WIND: NE-SE 5 mph to S-SW 8-14 mph

MONDAY NIGHT:

WEATHER: Warm and dry with mid slope thermal belts and poor to fair RH recoveries.

MINIMUM TEMPERATURE: Upper 60s to low 70s along slopes & ridges and mid to upper 60s in valleys.

MAXIMUM RELATIVE HUMIDITY: Around 28-36% slopes & ridges and 44-52% valleys.

20 FOOT WINDS: SW to NW 8-14 mph diminishing around 2100 then becoming N-NE 4-6 mph along ridges with downslope/down-valley 2-4 mph elsewhere.

STABILITY: Smoke settling into the area valleys including Scott Valley.

CHANCE OF THUNDERSTORMS: 10%

SMOKE TRANSPORT WIND: S-SW 8-10 mph to light NE-SE

TUESDAY: A potent shortwave trough will track just northwest of the region, bringing concern for windier conditions. Winds will be light and terrain driven in the morning, but afternoon southerly winds of 20 to 30 mph with gusts of 35 to 40 mph are possible both up the Scott Valley and on upper slopes and ridgelines. Remaining warm, highs ranging from mid to upper 80s along ridges to mid to upper 90s in valleys. Min RHs 17-23% with poor to fair overnight recoveries around 35-45% along slopes and ridges, and 48-58% in valleys. Winds diminishing overnight with more typical downslope/down-valley flows developing.

OUTLOOK FOR WEDNESDAY AND THURSDAY: Troughing to the northwest and ridging to the east will bring onshore pressure gradients with breezy SW to NW afternoon & evening winds along ridges and through channeled terrain. Temperatures will remain warm with highs in the mid 80s ridges to mid 90s valleys. RHs will stay fairly dry, with min RH in the 18-28% range and overnight recoveries 35-45% along slopes and ridges.

Please email weather observations to julia.ruthford@usda.gov or text them to 530-440-4898. Thanks!

FIRE BEHAVIOR FORECAST

FORECAST NUMBER: 10	TYPE OF FIRE: Wildfire
FIRE NAME: Shelly	OPERATIONAL PERIOD: 07/15 Day/Night
DATE ISSUED: July 14, 2024	TIME ISSUED: 1830
UNIT: CA-KNF	SIGNED: /s/ Patrick Doyle, FBAN 530-310-3552

WEATHER SUMMARY **Red Flag Warning** (See Fire Wx Forecast)

TOPOGRAPHY: Elevations: 2800'-7,400' Slopes: 0%-100+% (0°- 68°degrees)

FUELS: Key Fuel Models, Fuel Moistures, FDR

Grass/Shrub	GS2
Timber	TU5
FDFM (1hr)	5 % ▲ 1*
10-hr (%)	6 % ▲ 1*
100-hr (%)	6 % NC*
1000-hr(%)	<10 %*
Live Fuels (Seasonal grasses)	¾ to fully cured

Forecasted PSA04:
 NFDR (Y) Percentile
 ERC: 61 (▼ 3) 99th
 BI: 40 (▼ 5) 98th

*Note: FM %s in left column have been adjusted relative to Blue Ridge values.

Blue Ridge – KNF (40203) / Predictive Service Area: NC04 - Northwestern Mtn.

NC=No change, ▲ up, ▼ down

Fire Behavior (for new starts or unburned areas)

Probability of Ignition: 92% Unshaded / 76% Shaded
Spotting Distance: up to 0.5 mile (short range)
 Values below use 40% slope and assume upslope spread.

Fuel Model	Day		Night		
	FL (Ft.)	ROS (Ch/Hr)	Fuel Model	FL (Ft.)	ROS (Ch/Hr)
Grass/Shrub	5-21	23-39	GS2	1-17	1-39
Timber	1-10	1-16	TU5	1-10	1-16

Live fuel moistures in shrubs and trees, having passed green-up phase.

FIRE BEHAVIOR

GENERAL:

- Red Flag Warning: for abundant lightning on dry fuels (see Fire Wx Forecast).
- New starts from lightning or outflow winds from passing thunderstorm activity may impact fire behavior and growth. Consider potential impacts to your location and fire behavior. Strong outflow winds 30-40mph can cause change fire behavior and spread very quickly. Examples are by causing flare-ups, rapid rates of spread, increasing spotting/torching or changing fire spread direction.
- Fire activity could potentially be moderated by similar conditions as yesterday's passing thunderstorm activity. Increased cloud cover, increase daytime humidity and light precipitation. Which dampened fire behavior to significantly in fine dead fuels (1 & 10hour fuels) to moderate spread.
- Fuels are still very dry and receptive. Concern is for torching, spotting, or slope-reversals that can lead to uphill runs, torching, more spotting or crown runs.

SPECIFIC:

Branch X, DIVS A, B, C:

Upper Kidder and Mill Creek will be active in the timbered fuels where continuity provides for favorable nighttime burning conditions. Backing, flanking, potential for active growth in the afternoon with increase in activity, such as individual/group torching and spotting.

Branch XX, DIVS D, E, F:

Active fire growth in the Patterson Creek drainage, southside of ridge backing, consuming heavy's and occasional torching and spotting in area where fire pushed across ridgetop. Expect greatest activity in Section 23 upper Patterson Creek where alignment of fuels, slope and diurnal winds will support active fire growth. East aspect and upslope diurnal winds and low fuel moistures will support early activity (if skies are clear).

Branch XXX, DIVS G, M, T:

Lowest fire perimeter in Right Hand North Fork Salmon river, just west of Bear Wallow Peak, good potential for fire to spot across river and establish on westside of river.

AIR OPERATIONS: Inversion in the morning, air operations impacted by smoke.

Sunrise: 5:51am, Sunset: 8:43pm, Daylength: 14 hours, 51 minutes, 41 seconds (-1:25min)

SAFETY: Fire behavior may dictate indirect tactics in very challenging terrain. Maintain situational awareness and LCES when working in area with unburned fuels in-between resources and the fire.



SAFETY MESSAGE



Fire fighter safety comes first on every fire, every time

We are **ALL** accountable for **SAFE** behaviors
For Day/Night Operations: **July 15, 2024**

Exposure and Effects of Smoke

Smoke has both short and long-term negative health effects. The greatest smoke exposures are direct attack, line holding, burnout activities, and during inversions. While it may be “part of the job”, you can limit your exposure:

- Rotate personnel out of the worst smoke.
- Whenever possible, wait for heavies to burn down before mop-up.
- If you’re close enough to an ignition source to have watery eyes and snotty nose, you are also being exposed to carbon monoxide (CO).
- Monitor yourself and each other for CO exposure symptoms, including **headache, dizziness, nausea, and confusion.**

Driving Habits

- Back your vehicle into parking spaces and use a backer when possible.
- Everyone in the vehicle needs to wear a seat belt before the tires roll.
- Watch your speed, recognize the posted speed limit and adjust your speed for current conditions.
- Maintain safe following distances
- Eliminate driver distractions
- Put your cell phone away if you are driving, it’s the law.
- When driving past a closure, for example **Kidder Creek Rd.** off Highway 3, please slow down or stop.

Planning for Medical Emergencies

Ask and be able to answer these 3 questions:

1. **What are we going to do if someone gets hurt?**
2. **How will we get them out of here?**
3. **How long will it take to get them to a hospital?**

All operational activities should be based on answers to these questions. See page 2 of the IRPG for more information.

Prepared by: Mike Seymour SOFC, Matt Lipson SOF1.



ASSIGNMENT LIST (ICS 204 WF)

CONTROLLED UNCLASSIFIED
INFORMATION//BASIC

1. Incident Name: <p style="text-align: center; font-size: 1.2em;">SHELLY</p>	2. Operational Period: Date From: 07/15/24 Date To: 07/16/24 Time From: 0700 Time To: 0700	3. Branch Division <p style="text-align: center; font-size: 1.5em;">X A</p>
4. Operations Personnel:		Page 1 of 1 Alpha

Operations Section Chief: J. Owings/S. Lauderdale/J. Flores(T)	Night Ops: K.Bohall/R. Szczepanek(T)
Branch Director: S. Burns(12)/C. Periera	Branch Safety:
Division/Group Supervisor: G. Lowdermilk/S. Rushing (T)	Air Attack:

5. Resources Assigned:	** Resources Below in Bold are 12 Hour **							
Resource Identifier	ALS	LWD	Leader	Personnel	Request #	Hours	Reporting Location	
HC2IA SHASTA LAKE		7/16	Bogdan	22	C-2	0700-1900	Etna ICP	
S/T ENG3 KNF 3600C		7/20	Leckness	29	E-227	0700-1900	Etna ICP	
DOZ2 DEAN SMILEY		7/29	Brandon	2	E-81	0700-1900	Etna ICP	
FMOD HOMELAND		7/19	Ingersoll	2	O-46	0700-1900	Etna ICP	
FMOD WEST COAST CUTTING 1		7/20	Ancel	2	O-157	0700-1900	Etna ICP	
FMOD RED FLAG 1		7/20	Smith	2	O-159	0700-1900	Etna ICP	
FMOD RED FLAG 2		7/21	Fullerton	2	O-186	0700-1900	Etna ICP	
TFLD HAUPT		7/19	Haupt	1	O-50	0700-1900	Etna ICP	
SOFR BRYANT		7/22	Bryant	1	O-147	0700-1900	Etna ICP	
REMS 1	X	7/19	Walker	4	O-54	0700-1900	Etna ICP	
EMPF OWEN	X	7/19	Bryan	1	O-92	0700-1900	Etna ICP	
EMPF BANKS	X	7/22	Banks	1	O-202	0700-1900	Etna ICP	
EMPF SELLERS	X	7/23	Sellers	1	O-268	0700-1900	Etna ICP	
EMTF HAILE		7/26	Haile	1	O-20163	0700-1900	Etna ICP	
EMTF(T) NICHOLS		7/20	Nichols	1	O-87	0700-1900	Etna ICP	
REAF STEINWACHS		7/20	Steinwachs	1	O-178	0700-1900	Etna ICP	
REAF MASON		7/19	Mason	1	O-13	0700-1900	Etna ICP	

6. Work Assignments:
 Improve direct control line from HS7 along the ridge that runs towards the Campbell and Cliff Lakes to limit northern fire progression.
 Construct indirect control lines from Scott River Rd to DP10 to be utilized as secondary control lines.

7. Special Instructions:
 Identify potential drop points, landing zones, sling site and spike camp locations.
 24-hour resources contact Night Ops directly for direction after 1900.

8. Communications

Name	Ch	Function	Rx Freq	Rx Tone	Tx Freq	Tx Tone	Mode	Notes
NIFC C10	2	COMMAND	170.4125	(T3) 131.8	165.9625	(T3) 131.8	A	Quartz Lookout
CDF T14	5	TACTICAL	159.3075	(T16) 192.8	159.3075	(T16) 192.8	A	
A/G TAC	14	A/G TAC	168.3750	0.0	168.3750	0.0	A	
CALCORD	15	TACTICAL	156.0750	(T6) 156.7	156.0750	(T6) 156.7	A	
AIRGUARD	16	A/G	168.6250	0.0	168.6250	(T1) 110.9	A	

9. Prepared by: Name: M. Yeun/E. Morgan/S. Frank(T)/T.Hullquist(T)
 Signature:
 ICS 204 Date/Time: 7/14/2024 2200 Personnel Count: 74

ASSIGNMENT LIST (ICS 204 WF)

CONTROLLED UNCLASSIFIED
INFORMATION//BASIC

1. Incident Name: <p style="text-align: center; font-size: 1.2em;">SHELLY</p>	2. Operational Period: Date From: 07/15/24 Date To: 07/16/24 Time From: 0700 Time To: 0700	3. Branch Division <p style="text-align: center; font-size: 1.5em;">XX D</p> <p style="text-align: center;">Page 2 of 2 Delta</p>
--	---	--

4. Operations Personnel:	
Operations Section Chief: J. Owings/S. Lauderdale/J. Flores(T) Branch Director: T. Richter(12)/M. Khazaal(T) Division/Group Supervisor: J. Duncan	Night Ops: K.Bohall/R. Szczepanek(T) Branch Safety: Air Attack:

5. Resources Assigned:	** Resources Below in Bold are 12 Hour **							
Resource Identifier	ALS	LWD	Leader	Personnel	Request #	Hours	Reporting Location	
W/T PVT E-20088 - T & S					E-20088	0700-0700	DP7	
W/T PVT E-20192 - CON			SCHEEPS, STEVEN	2	E-20192	0700-0700	DP7	
W/T PVT E-20193			RICH		E-20193	0700-0700	DP7	
W/T PVT E-20198 - LENA			SPURLOCK, HANK		E-20198	0700-0700	DP7	
W/T PVT E-20199 - LENA			MONG, BRIAN		E-20199	0700-0700	DP7	
W/T PVT E-20200 - FIRE			TROEDEL, BRIAN		E-20200	0700-0700	DP7	
W/T PVT E-20245 - STOREY			STORY, LANE	2	E-20245	0700-0700	DP7	
W/T TBD						0700-0700	DP7	
W/T TBD						0700-0700	DP7	
MAST PVT E-20262 - HOME			FARRELL, CONOR	1	E-20262	0700-1900	DP7	
FALM PVT O-20220 - NORTH			LEE, MIKE	2	O-20220	0700-1900	DP7	
FALM PVT O-20223 - NORTH				2	O-20223	0700-1900	DP7	
HEQB MATHESON			MATHESON, RYAN		O-20140	0700-0700	DP7	
HEQB MINER			MINER, ROBERT		O-20194	0700-0700	DP7	
SOF2 BARNHART		7/22	Barnhart	1	O-284	0700-1900	DP7	
EMPF(T) HARTMAN	X	7/24	Hartman	1	O-20167	0700-1900	DP7	
EMPF(T) PHELPS	X	7/25	Phelps	1	O-20175	0700-1900	DP7	
EMTF HAWK		7/25	Hawk	1	O-20164	0700-1900	DP7	
EMTF GARCIA		7/24	Garcia	1	O-20181	0700-1900	DP7	

6. Work Assignments:
Direct fire attack.
Mop up.
Hold and improve control lines.

7. Special Instructions:
Only use water from metered hydrant in Fort Jones unless conducting direct suppression around residential areas.
DP7 located at South Kidder Creek Road and HWY 3.

8. Communications								
Name	Ch	Function	Rx Freq	Rx Tone	Tx Freq	Tx Tone	Mode	Notes
NIFC C10	2	COMMAND	170.4125	(T3) 131.8	165.9625	(T3) 131.8	A	Quartz Lookout
CDF T35	8	TACTICAL	151.4675	(T17) 67.0	151.4675	(T17) 67.0	A	
A/G TAC	14	A/G TAC	168.3750	0.0	168.3750	0.0	A	
CALCORD	15	TACTICAL	156.0750	(T6) 156.7	156.0750	(T6) 156.7	A	
AIRGUARD	16	A/G	168.6250	0.0	168.6250	(T1) 110.9	A	

9. Prepared by: Name: M. Yeun/E. Morgan/S. Frank(T)/T.Hullquist(T)
Signature:
ICS 204
Date/Time: 7/14/2024 2200 Personnel Count: 13

ASSIGNMENT LIST (ICS 204 WF)

CONTROLLED UNCLASSIFIED
INFORMATION//BASIC

1. Incident Name: <p style="text-align: center; font-weight: bold;">SHELLY</p>	2. Operational Period: Date From: 07/15/24 Date To: 07/16/24 Time From: 0700 Time To: 0700	3. Branch Division <p style="text-align: center; font-size: 2em; font-weight: bold;">XX E</p>
4. Operations Personnel:		Page 2 of 3 Echo

Operations Section Chief: J. Owings/S. Lauderdale/J. Flores(T) Branch Director: T. Richter(12)/M. Khazaal(T) Division/Group Supervisor: C. Martinelli/S.Pindell(12)	Night Ops: K.Bohall/R. Szczepanek(T) Branch Safety: Air Attack:
--	--

5. Resources Assigned:	** Resources Below in Bold are 12 Hour **							
Resource Identifier	ALS	LWD	Leader	Personnel	Request #	Hours	Reporting Location	
STL MEU 9118L			TAGLIO, KEN	7	E-20028	0700-0700	DP6	
STL TGU 9250L			WILBANKS, CLIFF	7	E-20008	0700-0700	DP6	
DOZ PVT E-20022 JOHNSON			JOHNSON, TIM		E-20022	0700-0700	DP6	
DOZ PVT E-20031 DVBE			ZIMMERMAN, TUCKER		E-20031	0700-0700	DP6	
DOZ PVT E-20032 MATANDY			HARKNESS, MATT		E-20032	0700-0700	DP6	
DOZ PVT E-20056 PRO			NORTON, TRACEY		E-20056	0700-0700	DP6	
DOZ PVT E-20057 PRO			NORTON, TRACEY		E-20057	0700-0700	DP6	
DOZ PVT E-20058 BLACK			WUNSCH, ALEX	2	E-20058	0700-0700	DP6	
W/T PVT E-20013 - AMERI			MARTINEZ, RUBEN	2	E-20013	0700-0700	DP6	
W/T PVT E-20109 - TRINITY			TAYLOR, JOSHUA	2	E-20109	0700-0700	DP6	
W/T PVT E-20201 - DIAMOND					E-20201	0700-0700	DP6	
W/T PVT E-20238 - AMERICA			CHRISTENSON, REG	2	E-20238	0700-0700	DP6	
W/T PVT E-20243 - H2O			CUSALICH, NATHAN	2	E-20243	0700-0700	DP6	
W/T PVT E-20246 - FOOTHILL			KELLY, TOM	2	E-20246	0700-0700	DP6	
W/T PVT E-20318 - REID			JENKINS, CODY	2	E-20318	0700-0700	DP6	
W/T PVT E-20320 TOUGH CO			HAMILTON, MARK	2	E-20320	0700-0700	DP6	
W/T PVT E-20321 WATER			SEABER, PAUL	2	E-20321	0700-0700	DP6	

6. Work Assignments:
Direct fire attack.
Prepare to implement a firing plan.

7. Special Instructions:

8. Communications								
Name	Ch	Function	Rx Freq	Rx Tone	Tx Freq	Tx Tone	Mode	Notes
NIFC C11	3	COMMAND	170.6875	(T3) 131.8	166.5750	(T3) 131.8	A	Whisky Butte
VFIRE 26	12	TACTICAL	154.3025	(T6) 156.7	154.3025	(T6) 156.7	A	
A/G TAC	14	A/G TAC	168.3750	0.0	168.3750	0.0	A	
CALCORD	15	TACTICAL	156.0750	(T6) 156.7	156.0750	(T6) 156.7	A	
AIRGUARD	16	A/G	168.6250	0.0	168.6250	(T1) 110.9	A	

9. Prepared by: Name: M. Yeun/E. Morgan/S. Frank(T)/T.Hullquist(T)
Signature: Personnel Count: 32

ASSIGNMENT LIST (ICS 204 WF)

CONTROLLED UNCLASSIFIED
INFORMATION//BASIC

1. Incident Name: <p style="text-align: center; font-weight: bold;">SHELLY</p>	2. Operational Period: Date From: 07/15/24 Date To: 07/16/24 Time From: 0700 Time To: 0700	3. Branch Division Contingency North
--	---	--

4. Operations Personnel:		Page 3 of 4
Operations Section Chief: J. Owings/S. Lauderdale/J. Flores(T)	Night Ops: K.Bohall/R. Szczepanek(T)	
Branch Director: L. Wright	Branch Safety:	
Division/Group Supervisor: S. Kovacs/J. Stitt(T)	Air Attack:	

5. Resources Assigned:	** Resources Below in Bold are 12 Hour **							
Resource Identifier	ALS	LWD	Leader	Personnel	Request #	Hours	Reporting Location	
FMOD GOD & COUNTRY 2		7/20	Robbins	2	O-163	0700-1900	Etna ICP	
FMOD NORTH ZONE FALLERS		7/21	Bennett	2	O-188	0700-1900	Etna ICP	
TFLD PERRAULT		7/21	Perrault	1	O-165	0700-1900	Etna ICP	
TFLD DELSANTOS		7/22	Delsantos	1	O-232	0700-1900	Etna ICP	
TFLD LICHTER		7/22	Lichter	1	O-235	0700-1900	Etna ICP	
TFLD NEUMAN		7/22	Neuman	1	O-248	0700-1900	Etna ICP	
TFLD(T) DAWSON		7/21	Dawson	1	O-164	0700-1900	Etna ICP	
HEQB CRUM		7/21	Crum	1	O-175	0700-1900	Etna ICP	
HEQB RABLIN		7/21	Rablin	1	O-176	0700-1900	Etna ICP	
HEQB STEVENS		7/21	Stevens	1	O-226	0700-1900	Etna ICP	
HEQB CORDELL		7/22	Cordell	1	O-227	0700-1900	Etna ICP	
HEQB EDMONDSON		7/24	Edmondson	1	O-229	0700-1900	Etna ICP	
HEQB(T) SMITH		7/26	Smith	1	O-380	0700-1900	Etna ICP	
FOBS MILLER		7/14	Miller	1	O-131	0700-1900	Etna ICP	
SOFR NORTH		7/22	North	1	O-213	0700-1900	Etna ICP	
SOFR(T) GRAY		7/17	Gray	1	O-7.6	0700-1900	Etna ICP	

6. Work Assignments:
Identify and construct potential contingency lines to limit the fire progression.
Improve Scott River Rd to limit northern fire progression.

7. Special Instructions:
Identify and establish water sources.
Do not use hydrants as water sources unless conducting direct suppression around residential area.

8. Communications								
Name	Ch	Function	Rx Freq	Rx Tone	Tx Freq	Tx Tone	Mode	Notes
NIFC C10	2	COMMAND	170.4125	(T3) 131.8	165.9625	(T3) 131.8	A	Quartz Lookout
NIFC T5	P2.9	TACTICAL	166.7750	(T3) 131.8	166.7750	(T3) 131.8	A	
A/G TAC	14	A/G TAC	168.3750	0.0	168.3750	0.0	A	
CALCORD	15	TACTICAL	156.0750	(T6) 156.7	156.0750	(T6) 156.7	A	
AIRGUARD	16	A/G	168.6250	0.0	168.6250	(T1) 110.9	A	

9. Prepared by: Name: M. Yeun/E. Morgan/S. Frank(T)/T.Hullquist(T)

Signature:

ICS 204	Date/Time: 7/14/2024 2200	Personnel Count: 18
----------------	---------------------------	---------------------

ICS 205 - INCIDENT RADIO COMMUNICATIONS PLAN

CONTROLLED UNCLASSIFIED
INFORMATION//BASIC

1. Incident Name: Shelly Branch X / XX / Structure Incident Channels	2. Date/Time Prepared Date: 07/14/2024 Time: 1930	3. Operational Period: Date From: 07/15/24 Time From: 0700 Date To: Time To: 0700
---	--	--

4. Communications											
Ch#	Function	Name	Assigned To	Rx Freq	Rx Tone	Rx Freq	Rx Tone	Tx Freq	Tx Tone	Mode	Notes
1	COMMAND	NIFC C3	ALL DIVS	170.4250	(T3) 131.8	168.0750	(T3) 131.8	168.0750	(T3) 131.8	A	English Peak
2	COMMAND	NIFC C10	ALL DIVS	170.4125	(T3) 131.8	165.9625	(T3) 131.8	165.9625	(T3) 131.8	A	Quartz Lookout
3	COMMAND	NIFC C11	ALL DIVS	170.6875	(T3) 131.8	166.5750	(T3) 131.8	166.5750	(T3) 131.8	A	Whisky Butte
4	COMMAND	NIFC C12	ALL DIVS	173.0375	(T3) 131.8	167.3250	(T3) 131.8	167.3250	(T3) 131.8	A	Helispot 5
5	TACTICAL	CDF T14	DIV A/F	159.3075	(T16) 192.8	159.3075	(T16) 192.8	159.3075	(T16) 192.8	A	
6	TACTICAL	CDF T15	DIV B	151.1825	(T16) 192.8	151.1825	(T16) 192.8	151.1825	(T16) 192.8	A	
7	TACTICAL	CDF T24	DIV C	151.3325	(T16) 192.8	151.3325	(T16) 192.8	151.3325	(T16) 192.8	A	
8	TACTICAL	CDF T35	DIV D	151.4675	(T17) 67.0	151.4675	(T17) 67.0	151.4675	(T17) 67.0	A	
9	TACTICAL	CDF T36	ETNA	159.3225	(T17) 67.0	159.3225	(T17) 67.0	159.3225	(T17) 67.0	A	
10	TACTICAL	CDF T37	QUARTZ	151.1525	(T17) 67.0	151.1525	(T17) 67.0	151.1525	(T17) 67.0	A	
11	TACTICAL	VFIRE 25	GREENVIEW	154.2875	(T6) 156.7	154.2875	(T6) 156.7	154.2875	(T6) 156.7	A	
12	TACTICAL	VFIRE 26	DIV E	154.3025	(T6) 156.7	154.3025	(T6) 156.7	154.3025	(T6) 156.7	A	
13	A/G CMD	A/G CMD	ALL DIVS	166.6000	0.0	166.6000	0.0	166.6000	0.0	A	Overhead Use Only
14	A/G TAC	A/G TAC	ALL DIVS	168.3750	0.0	168.3750	0.0	168.3750	0.0	A	
15	TACTICAL	CALCORD	ALL DIVS	156.0750	(T6) 156.7	156.0750	(T6) 156.7	156.0750	(T6) 156.7	A	Medical Evac Tone 6
16	A/G	AIRGUARD	ALL DIVS	168.6250	0.0	168.6250	0.0	168.6250	(T1) 110.9	A	Emergency Use Only
17											
18											
19											
20	A/G	AIRGUARD	ALL DIVS	168.6250	0.0	168.6250	0.0	168.6250	(T1) 110.9	A	

5. Special Instructions

6. Prepared by (Communications Unit Leader): Name: C.Perry	Signature:
ICS 205 - CONTROLLED UNCLASSIFIED INFORMATION//BASIC	NIMS IAP Date/Time: 07/14/24 1930

ICS 205 - INCIDENT RADIO COMMUNICATIONS PLAN

CONTROLLED UNCLASSIFIED INFORMATION/BASIC

1. Incident Name: Shelly Branch XXX / Contingency	2. Date/Time Prepared Date: 07/14/2024 Time: 1930	3. Operational Period: Date From: 07/15/24 Time From: 0700
Page 2	Date To: 07/16/24	Time To: 0700

4. Communications									
Ch#	Function	Name	Assigned To	Rx Freq	Rx Tone	Tx Freq	Tx Tone	Mode	Notes
1	COMMAND	NIFC C3	ALL DIVS	170.4250	(T3) 131.8	168.0750	(T3) 131.8	A	English Peak
2	COMMAND	NIFC C10	ALL DIVS	170.4125	(T3) 131.8	165.9625	(T3) 131.8	A	Quartz Lookout
3	COMMAND	NIFC C11	ALL DIVS	170.6875	(T3) 131.8	166.5750	(T3) 131.8	A	Whisky Butte
4	COMMAND	NIFC C12	ALL DIVS	173.0375	(T3) 131.8	167.3250	(T3) 131.8	A	Helispot 5
5	TACTICAL	NIFC T1	DIV G	168.0500	(T3) 131.8	168.0500	(T3) 131.8	A	
6	TACTICAL	NIFC T2	DIV M	168.2000	(T3) 131.8	168.2000	(T3) 131.8	A	
7	TACTICAL	NIFC T3	DIV T	168.6000	(T3) 131.8	168.6000	(T3) 131.8	A	
8	TACTICAL	NIFC T4	UNASSIGNED	166.7250	(T3) 131.8	166.7250	(T3) 131.8	A	Unassigned
9	TACTICAL	NIFC T5	NORTH	166.7750	(T3) 131.8	166.7750	(T3) 131.8	A	
10	TACTICAL	NIFC T6	SOUTH	168.2500	(T3) 131.8	168.2500	(T3) 131.8	A	
11	TACTICAL	VTAC 12	EAST	154.4525	(T6) 156.7	154.4525	(T6) 156.7	A	
12	TACTICAL	VTAC 13	UNASSIGNED	158.7375	(T6) 156.7	158.7375	(T6) 156.7	A	Unassigned
13	A/G CMD	A/G CMD	ALL DIVS	166.6000	0.0	166.6000	0.0	A	Overhead Use Only
14	A/G TAC	A/G TAC	ALL DIVS	168.3750	0.0	168.3750	0.0	A	
15	TACTICAL	CALCORD	ALL DIVS	156.0750	(T6) 156.7	156.0750	(T6) 156.7	A	Medical Evac Tone 6
16	A/G	AIRGUARD	EMERGENCY	168.6250	0.0	168.6250	(T1) 110.9	A	Emergency Use Only
17									
18									
19									
20	A/G	AIRGUARD	Emergency	168.6250	0.0	168.6250	(T1) 110.9	A	Emergency Use Only

5. Special Instructions									


6. Prepared by (Communications Unit Leader): Name: C.Perry	Signature:
ICS 205 - CONTROLLED UNCLASSIFIED INFORMATION//BASIC	Date/Time: 07/14/24
	1930

ICS 205 - INCIDENT RADIO COMMUNICATIONS PLAN

1. Incident Name: SHELLY IA Page 3	2. Date/Time Prepared Date: 07/14/2024 Time: 1930	3. Operational Period: Date From: 07/15/24 Time From: 0700 Date To: Time To: 0700
---	--	--

4. Communications										
Ch#	Function	Name	Assigned To	Rx Freq	Rx Tone	Tx Freq	Tx Tone	Mode	Notes	
1	DISPATCH	FS KNF	DISPATCH	171.5250	0.0	165.4125	OST	A	Dispatch	
2	COMMAND	KNF Salmon	IA COMMAND	172.4000		164.1250	OST	A		
3	COMMAND	KNF River	IA COMMAND	172.2500		165.0750	OST	A		
4	TACTICAL	R5 T4	IA TAC	166.5500	0.0	166.5500	0.0	A		
5	A/G	AG-43	IA A/G	167.6000	0.0	167.6000	0.0	A		
6	DISPATCH	SKU L	DISPATCH	151.3250	(T6) 156.7	159.3600	OST	A		
7	TACTICAL	CDF T9	IA TAC	151.3850	(T16) 192.8	151.3850	(T16) 192.8	A		
8	TACTICAL	CDF T10	IA TAC	151.4000	(T16) 192.8	151.4000	(T16) 192.8	A		
9	A/G	CDF A/G1	IA A/G	151.2200	(T16) 192.8	151.2200	(T16) 192.8	A		
10										
11										
12										
13										
14	A/G TAC	A/G TAC	ALL DIVS	168.3750	0.0	168.3750	0.0	A		
15	TACTICAL	CALCORD	ALL DIVS	156.0750	(T6) 156.7	156.0750	(T6) 156.7	A	Medical Evac Tone 6	
16	A/G	AIRGUARD	EMERGENCY	168.6250	0.0	168.6250	(T1) 110.9	A	Emergency Use Only	
17										
18										
19										
20	A/G	AIRGUARD	EMERGENCY	168.6250	0.0	168.6250	(T1) 110.9	A	Emergency Use Only	

5. Special Instructions

6. Prepared by (Communications Unit Leader): Name: C.Perry	Signature:  Date/Time: 07/14/24 NIMS IAP 1930
---	---

AIR OPERATIONS SUMMARY ICS-220													
Incident Name / Number			Sunrise		Sunset		Airport		Pumpkin				
SHELLY			0552		2043		A30		2030				
<p>General Remarks, Safety Notes, Hazards, Air Operations Special Equipment, etc.</p> <p>*All Aircraft orders go to Scott Valley Helibase</p> <p>*Be aware of retardant avoidance areas, 300ft away from waterways and bodies of water.</p> <p>*Sanitize Buckets before changing water sources.</p> <p>*Clear drop arealine before initiating drop sequence.</p> <p>*Be cognizant of all overhead and environmental hazards while working with Aircraft.</p> <p>*All GPS is to be collected in DD" MM,MMM</p> <p>*ALL water and retardant picks/drops need to be tracked and recorded</p> <p>*Aviation daily cost to: Scottvalleyhb2023@gmail.com</p> <p>*Siskiyou County Airport temporary FFA tower in place for all air traffic control.</p>													
Time Prepared			Date Prepared			Prepared By							
1700			7/14/2024			Kyle Beinschroth							
Shutdown			Operational Period - Date			Operational Period - Time							
2030			7/15/2024			0800-2030							
Helibase Information			**day to day changes with			Medivac Ship Information							
Scott Valley Helibase A30			sunrise/sunset/pumpkin times			Short Haul							
530-468-1294			*pumpkin 2030 reflects 07/15/24			3SH			24hr Hoist				
41 33.395 N						SVHB			G841				
122 51.208 W						Siskiyou Helibase SIY			Dunsmuir-Mott				
41 46.530 N						Request Procedure for These Aircraft:							
122 28.330 W						Communications/Dispatch on Command,							
Incident Frequencies		RX	Tone	TX	Tone	AM/FM	Position	Name	Phone	EQUIPMENT/SUPPLIES			
TFR Victor		120.5250		120.5250		AM							
Rotor Victor		132.5750		132.5750		AM	AODB	Kyle Beinschroth	760-617-9493				
Briefing Victor		125.1250		125.1250		AM	ASGS						
AirTactics		164.7750		164.7750		FM	ASGS-T	Dakota Fuiks	530-736-2863				
A/G CMD		166.6000		166.6000		FM	HEBM-SVHB	Lee Stewart	775-220-6364				
A/G TAC		168.3750		168.3750		FM	HEBM-SIY	Dennis Cobb	530-526-6994				
TOLC		169.2000		169.2000		FM	HLCO	Matt Lynde	530-919-8673				
DECK		163.1000		163.1000		FM	ATGS	Isaac Flattley	530-864-0202				
AIR GUARD		168.6250	156.7	168.6250	110.9	FM	ATBM	Matt Libby	530-643-9887	SIY Tanker Base			
CALCORD		156.0750	156.7	156.0750	156.7	FM	UR-31	Josh Silveira	831-601-8540	UAS			
Siskiyou Tower		128.7750		128.7750		FM	UR-32	Thomas Headly	760-220-1827	UAS			
							UR-33	Scott Eckman	916-558-8568	UAS			
							UAO	Tyler Detrick	530-925-9668				
HELICOPTERS - Scott Valley Helibase													
FAA #	TYPE	Make/Model	Helibase	Start	Avail	Remarks	FAA #	TYPE	Make/Model	Airport	Start	Avail	Remarks
503	3	AS350B3E	SVHB	0800	0830	Recon, Bux, PSD, IA	N181EH	3	AS350B3E	SIY	0800	0830	Recon
N353SH	3	AS350B3E	SVHB	0800	0830	Short Haul, Recon, Bux, PSD, IA	N4582D	2	UH-1H	SIY	0800	0830	Bucket
502	3	AS350B3E	SVHB	0800	0830	Recon, Bux, PSD, IA	N5517N	2	UH-1H	SIY	0800	0830	Bucket
532	2	Bell 205A++	SVHB	0800	0830	Bux, Troop transport, Recon	N45917	1	S-61	SIY	0800	0830	Tanked
N357KA	1	Kmax	SVHB	0800	0830	Bux, Cargo	N805PJ	1	UH-60	SIY	0800	0830	Bucket
N675TH	1	Kmax	SVHB	0800	0830	Bux, Cargo	N80BH	1	UH-60	SIY	0800	0830	Bucket
N39HX	1	Kmax	SVHB	0800	0830	Bux, Cargo	N517MB	1	UH-60	SIY	0800	0830	Bucket
N40HX	1	Kmax	SVHB	0800	0830	Bux, Cargo	N6962R	1	S-64	SIY	0800	0830	Tanked
							G841	1	UH-60	106	0800	0830	24 hour hoist
FIXED WING AA/HLCO													
FAA #	Call Sign	Make/Model	Base	Start	Avail	Remarks	FAA #	TYPE	Make/Model	Airport	Start	Stop	Remarks
N32WS	AA05	AC690	SIY	0800	0830								
N14HX	507	Bell 407HP	SIY	0800	0830	HLCO IR							

HELICOPTER EXTRACTION OPERATIONS

The intent of helicopter insertion/extraction operations is to facilitate the movement of personnel to and from inaccessible areas. These operations are not meant to be a medical transport resource; life flight and ground transportation should always be ordered in addition to the extraction aircraft and crew.

ORDERING:

- On-scene EMT and/or Incident within Incident IC determines that an extraction helicopter is needed and places the order through the pre-established procedures:
 - Division Supervisor
 - Incident Communications
 - Dispatch Center
- When ordering extraction aircraft provide the following information:
 - Location (Lat/Long) of patient
 - Known Hazards
 - Wind Speed and Direction
 - Terrain
 - Incident Updates

SITE SELECTION:

- The helicopter crew will confirm the extraction location when they arrive on scene. However, a general rule is any clearing that is 10'x10' with visible sight lines to the sky is a suitable extraction site.
- If the terrain is steep, excavating a platform or shelf can make it easier for patient packaging.

QR Code-Short-haul Site Selection Video



CONSIDERATIONS:

- Short-haul and hoist are safe and efficient operations for extracting injured personnel of any severity including "Green" patients.
- Ensure area is clear of non-essential items, hazards, and personnel.
- Rotor wash may affect overhead hazards and blowing dust/debris can create brown out conditions or influence fire behavior.
- Aerial Supervision is valuable for coordinating aviation medevac/extraction missions and should be ordered if available and not currently present.
- The aircrew will make the final assessment of the mission. Always have a contingency plan in case a helicopter cannot complete the request.

DEFINITIONS:

Rescue Hoist: A cable winching device mounted to the helicopter that can lower/raise persons attached to a cable.

- Common cable lengths are 250-300 feet.

Short-haul: To insert or extract one or more persons suspended on a fixed line beneath a helicopter.

- Common short-haul line lengths are 100, 150, and 250 feet. The lines can also be connected for a longer line if the situation requires it.

FINANCE MESSAGE

Fire Name: Shelly Fire
Fire Number: CA-KNF-005159
Accounting Code: P5 R18J (0505)
Email: 2024.shelly.finance@firenet.gov
Incident Phone: 530-536-0781

Finance Documents Needed upon "Check In" (If Not Already Submitted):

Please email these documents or scan the QR Code below, attach & submit.			
FED Equipment/ Crews: <ul style="list-style-type: none"> Manifest - showing employment type (GS or WG) or AD rates if applicable 	Overhead: <ul style="list-style-type: none"> AD/Casual Hire Form If regular Agency please ensure "GS" or "WG" is written on your CTR 	Contract Equipment/ Contract Crews: <ul style="list-style-type: none"> Agreement Manifest Resource Order Inspections 	Cooperator: <ul style="list-style-type: none"> Cooperative Agreement Resource Order

When emailing finance:

- Overhead/FED: *subject line:* TIME, Resource #, Resource Name
- Equipment/Cooperator: *subject line:* EQTR, Resource #, Resource Name

Prior to your demob date, please contact Finance via email to expedite the demob process. Upon submittal of your final CTR/Shift Tickets, Finance will email you copies of your pay documents for review and signature.

Local Government Resources & CalOES on CFAA also check-in here:



Rick Young CalOES AREP
616-541-3165



FINANCE MESSAGE



TIME Process

Shift Tickets: Line supervisors complete for Hired Equipment and submit hard copy to TIME, OR complete an e-Shift Ticket online at <https://shifftickets.fire.ca.gov> AND provide a hard copy to TIME. Shift Ticket example on next page of IAP.

Personnel Time: All Cal Fire personnel check in to TIME trailer located at fairgrounds in Yreka.

Hired Equipment: All Hired Equipment resources check in to TIME trailer located at fairgrounds in Yreka with a copy of your agreement.

Local Government: Check-in with OES Rep, located at the fairgrounds in Yreka. See previous page of IAP.

COMP/CLAIMS

Report all comp claims to FINANCE. Bill Stirton 707-499-9251

AO-341 Hotel Rosters

Please sign the roster for every night.

Feeding

Feeding is provided at the Yreka fairgrounds.

Off-Site feeding is approved for DINNER ONLY for personnel lodging in the following locations:

MEDFORD			ASHLAND	Mt. Shasta
Elmer's 2000 Biddle Rd. Medford, OR	Elmer's 68 E Stewart Ave. Medford, OR	Applebee's 1388 Biddle Rd. Medford, OR	Oak Tree Bar & Grill 2510 Ashland St. Ashland, OR	Black Bear Diner 401 W Lake St. Mt. Shasta, CA



CAL FIRE SISKIYOU UNIT

Finance Section – Shift Ticket Examples



24HR LINE RESOURCE - 2 OPERATORS

EMERGENCY SHIFT TICKET and EVALUATION FORM The responsible Government Officer will complete this form each shift.						Contractor Name DIRT PUSHERS LLC			
Incident or Project Name SHELLY		Incident Number CAKNF005159		Request Number E-20007		Operator #1 (DAY SHIFT) FIRST & LAST		Operator #2 (NIGHT SHIFT) FIRST & LAST	
Agreement Number SHU 0012345678						Operator Furnished By: <input checked="" type="checkbox"/> Contractor <input type="checkbox"/> Government			
Equipment Make 2002 CATERPILLAR			Equipment Model / Type D6N XL, TYPE 2 - E			Operating Supplies Furnished By: <input checked="" type="checkbox"/> Contractor <input type="checkbox"/> Government			
Serial Number COMPLETE SERIAL #			License Number			Equipment Status <input checked="" type="checkbox"/> Inspected <input checked="" type="checkbox"/> Under Agreement			
Equipment Use						Released by Government <input type="checkbox"/> Withdrawn by Contractor <input type="checkbox"/>			
Date Mo / Day	Start	Stop	(Circle) Hours	Days / Miles	Assignment				
6/18	0701	2400	17	DIV X					
6/19	0001	0700	7	DIV X					
Vendor Rating						Govt. Rep. Name and Position – PRINT Print Your Name			
Met Performance Expectations						Govt. Rep. Signature <i>Your Signature</i>			
Equipment in Safe Working Condition						Contractor Signature <i>Contractor Signature</i>			
Operator Skill Level						Date 7/9/2024 Time 0700			
Operates Safely						Overall Performance			
Operator's Cooperation Level						* NOTE: any rating of POOR requires an explanation in Comment Section.			
Overall Performance						** Final evaluation or for more documentation, use a CALFIRE Form 230 or equivalent.			
						CAL FIRE 297 (Rev 3-2011)			

12HR LINE RESOURCE - 1 OPERATOR

EMERGENCY SHIFT TICKET and EVALUATION FORM The responsible Government Officer will complete this form each shift.						Contractor Name TRANSPORTS EXPRESS			
Incident or Project Name SHELLY		Incident Number CAKNF005159		Request Number E-20008		Operator #1 (DAY SHIFT) FIRST & LAST		Operator #2	
Agreement Number SHU 0012345678						Operator Furnished By: <input checked="" type="checkbox"/> Contractor <input type="checkbox"/> Government			
Equipment Make 1999 PETERBILT 379			Equipment Model / Type TRANSPORT 18 WHEEL			Operating Supplies Furnished By: <input checked="" type="checkbox"/> Contractor <input type="checkbox"/> Government			
Serial Number LAST 8 OR FULL VIN			License Number 12345A1			Equipment Status <input checked="" type="checkbox"/> Inspected <input checked="" type="checkbox"/> Under Agreement			
Equipment Use						Released by Government <input type="checkbox"/> Withdrawn by Contractor <input type="checkbox"/>			
Date Mo / Day	Start	Stop	(Circle) Hours	Days / Miles	Assignment				
4/1	0701	1900	12	DIV X					
Vendor Rating						Govt. Rep. Name and Position – PRINT Print Your Name			
Met Performance Expectations						Govt. Rep. Signature <i>Your Signature</i>			
Equipment in Safe Working Condition						Contractor Signature <i>Contractor Signature</i>			
Operator Skill Level						Date 7/9/2024 Time 1900			
Operates Safely						Overall Performance			
Operator's Cooperation Level						* NOTE: any rating of POOR requires an explanation in Comment Section.			
Overall Performance						** Final evaluation or for more documentation, use a CALFIRE Form 230 or equivalent.			
						CAL FIRE 297 (Rev 3-2011)			

PLEASE REPORT TO TIME UNIT

07/15/2024

Contractor Name:	Request Number:	Unit:
AAA Tozier's Fire Support LLC	E- 20287, E-20299	TGU/BTU
All American Emergency Services	E-20095, E-20159, E-20160	SHU/SKU
Big Timber Incident Support	E-20086, E-20087	SHU
C & J Mobile Sinks	E-20309, E-20311	SKU
Campbell Corp.	E-20144, NEED SECOND REQUEST NUMBER	AEU
Chrisenson and Sons	E-20038	NEU
Cottonwood Equipment	E-20280	TGU
Easy Trucking LLC	E-20125, E-20075	SHU
Emergency Water Supply Inc	E-20038, E-20164, E-20310	SKU/SHU
Expeditors By Lindale Inc	E-20027	SHU
Fire Dawg Green Inc.	E-20138, E-20038, E-2000, E-2001, NEED REQUEST#'s CONFIRMED	SKU
Fire Support Unlimited	E-20288	MMU
Fire Water Supply Inc.	E-20313, E-20026, E-20135	SKU
Foothill H2O INC	E-20246	MMU
Grant Logging/Tom Grant	E-20111, E- 20134	HUU
H2O Transport LLC	E-20243	TCU
Hilton Trucking And Equipment LLC	E-20308	TGU
Independent Structure	E-20081, E-20131, NEED REQUEST #'s CONFIRMED	LMU
Mariah Transport	E-20212, E-20065, E-20244	NEU
Matandy Land & Cattle	E-20032, E-20036	LMU
Mean Gene's Gas/Gene Erickson	E-20024, E-20074, E-20124,	SKU
Western Waters Inc	E-20305	TGU

STILL NEED CONTRACTS



If you would like to be part of our Cooperators Team, use this QR code to have your name on our mailing list and Cooperators Contact Sheet. You can get our meeting updates, agendas and IAP's.



If you are a Trainee on the Assignment



John Fakehany
 TNSP
 909-693-9748

Jecobie Waters
 TNSP(t)
 530-414-3470

Make Sure to
 Register With Training

Logistics Hours

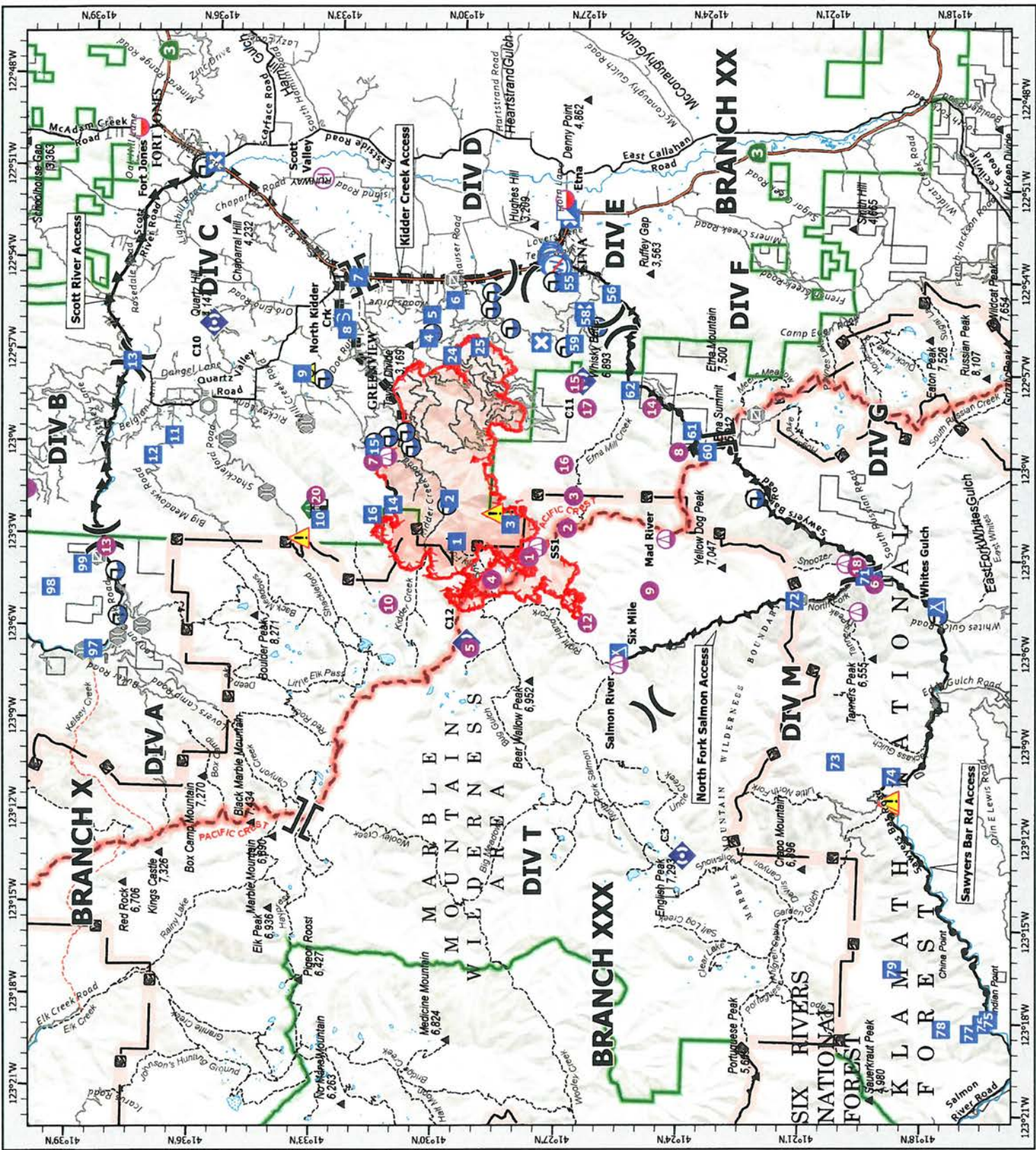
- Caterer Hours: Breakfast: 0530 - 0900**
- Dinner: 1800 - 2130**
- Shower: 0500-1200, 1400 – 2300**
- Supply: 0630-2130**
- Laundry: 0500-2200**
- Fuel Tender 0600-1300, 1500-2200**

HUMAN RESOURCE MESSAGE

Disrespect and Bullying : Never, EVER, tolerate disrespectful people, including those who are not only disrespectful to you but also others. - Never tolerate a bully. Disrespectful people and bullies show no regard for people, laws, morality or the social norm. -If you have experienced disrespect or bullying on the job, whether towards you or somebody else, report it. Not only is it against policy, in some circumstances it's against the law. So, if you see something, say something.



HRSP: Adam Alvarez – (707) 373-9715
 NFFE Union Contact: Gay Baxter: (530) 598-6095



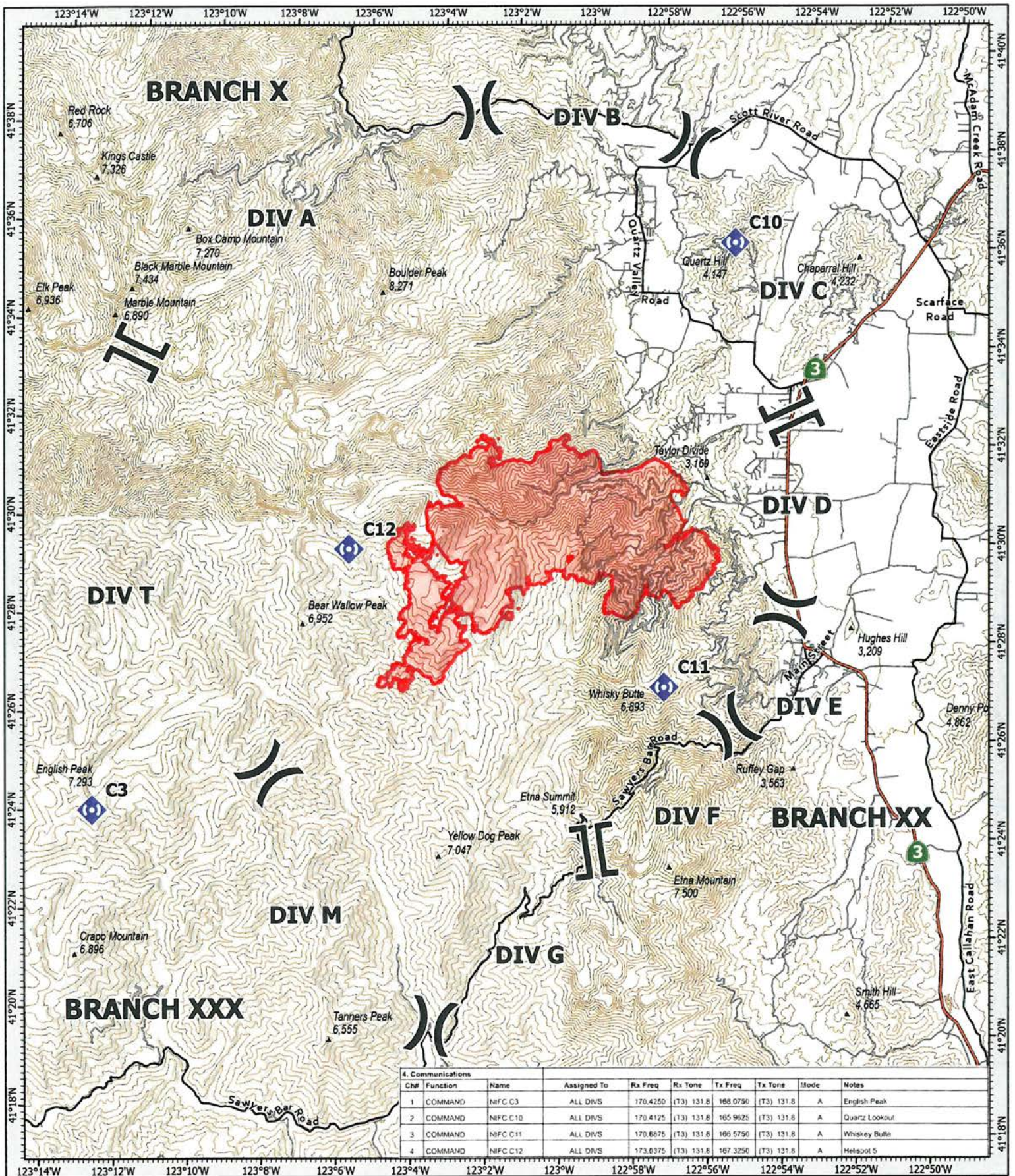
TRANSPORTATION
SHELLY
07/15/24



- Mobile Retardant Base
- Helispot
- Helibase
- Sling Site
- Division Break
- Branch Break
- Incident Command Post
- Drop Point
- Closure
- Camp
- Staging Area
- Lookout
- Landmark
- Gate
- Bridge
- Road Repair
- Repeater
- Safety Zone
- Hazard
- Draft Site
- Hydrant
- Restricted Water Source
- Contained
- Uncontained
- Wildfire Daily Fire Perimeter
- Secondary Highway
- Major Road
- Minor Road
- National Trail
- Trail
- National Designated Trail
- Water Trail
- USFS Wilderness
- USFS Administrative Forest
- Non Forest
- Transportation Routes
- Kidder Creek Access
- North Fork Salmon Access
- Sawyers Bar Rd Access
- Scott River Access



1:250,000 NPOB3 LTTM11N



COMMUNICATIONS SHELLY

CA-KNF-005159

07/15/24

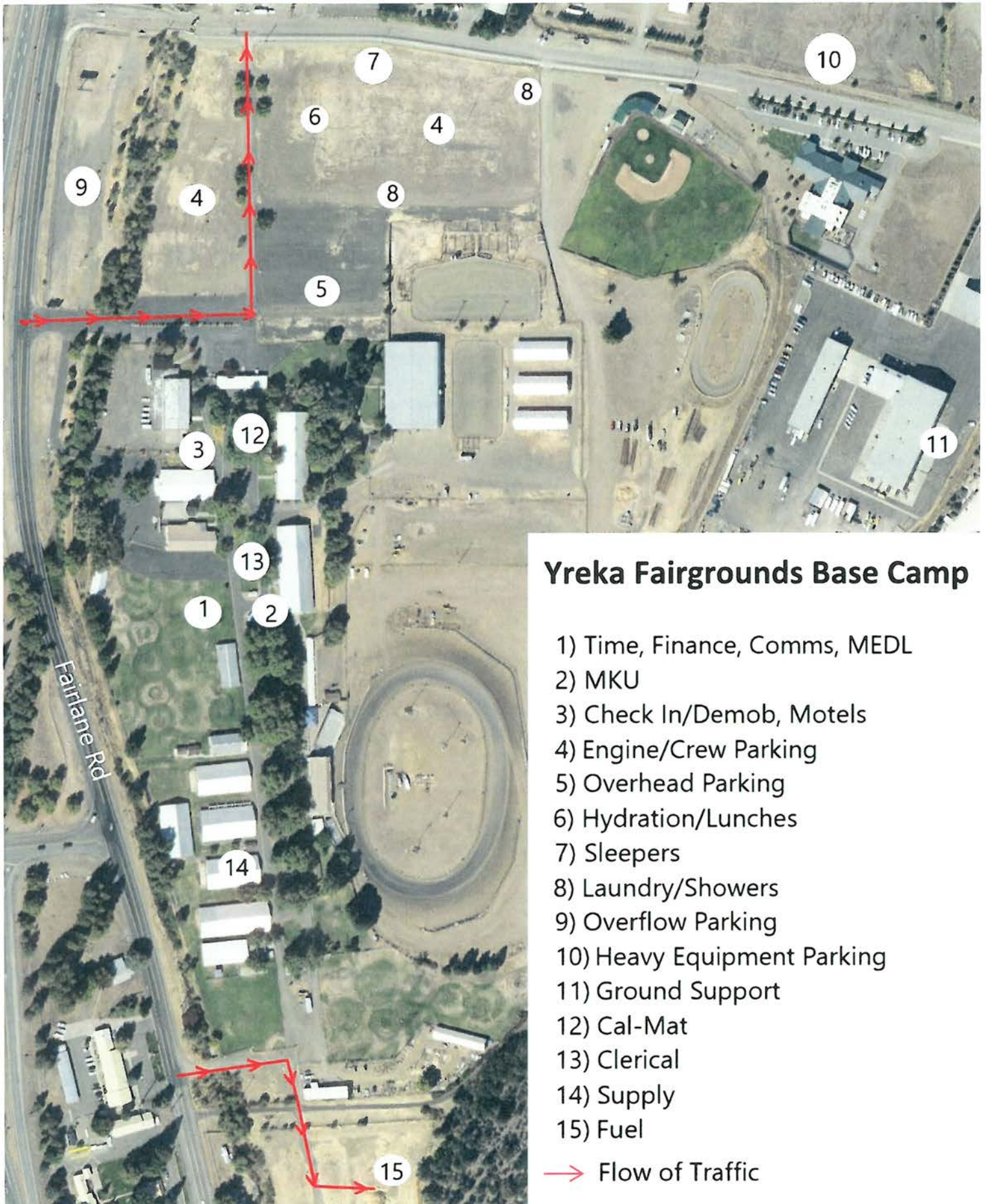


1:180,000

NAD83 CA ALBERS

0 1 2 4 Miles

Prepared by CAIMT12 7/14/2024 18:39



Yreka Fairgrounds Base Camp

- 1) Time, Finance, Comms, MEDL
- 2) MKU
- 3) Check In/Demob, Motels
- 4) Engine/Crew Parking
- 5) Overhead Parking
- 6) Hydration/Lunches
- 7) Sleepers
- 8) Laundry/Showers
- 9) Overflow Parking
- 10) Heavy Equipment Parking
- 11) Ground Support
- 12) Cal-Mat
- 13) Clerical
- 14) Supply
- 15) Fuel

→ Flow of Traffic

Shelly Incident CA-KNF-005159
 1712 Fairlane Rd, Yreka CA 96097

CIIMT 12 Line Order Worksheet



Date, Time, and From Who Order Was Placed:	Order Number:	Delivery Location and Time (Div, LZ, DP, Lat/Long, etc)	Delivery Mode (Delivery, Pickup, Helo, etc.):
Order received in Communications by: Delivery by who & time and/or date scheduled. Detailed instructions and notes if needed:			
Item #	Description	Note: Items match reference cards carried by Team 12 operations personnel	Quantity Ordered
1	Mark III Pump Kit: Contains frame and Alice Pack with Straps, 1ea 10' x 1.5" Hard Suction, Instructions, Tool Roll Kit, 1ea 35GPM Nozzle, 1ea 60GPM Nozzle, 1ea Twin Tip Nozzle 1", 1qt two cycle oil, Packsack-waterproof w/straps, Collapsible Bucket, Hand Primer, 1ea 10' x 20' Plastic Sheeting, 1ea 5 Gallon Fuel Can with Adapters, 1ea 1.5" Check and Bleeder Valve, 1ea 1.5" Foot Valve, 1ea 1.5" Pressure Relief Valve, 1ea 1.5" Gated Wye, 1ea 1.5" Spanner Wrench, P-Cord		
2	UNI-Engine (Klump Pump) Dimensions: 7" wide x 10' Long, 1000 Gallon Capacity, 13 HP, 90 GPM, @ 110 psi, Unleaded Fuel, 24' of 2" Hard Suction, 1000' of 1.5", 800' of 1", 400' 3/4" Hose, Self-leveling System with Manual Jacks, 1600 lbs. Fully Equipped w/Type-2 Helo Cables, 5 Gallons of Foam with proportioner		
3	Norton Hose Kit 1 1/2" Hose - 5000 Feet, 1" Hose - 2000 Feet, 3/4" Hose 2000 Feet, 1 1/2" Gated Wye's - 25ea, 1 1/2" to 1" Reducers - 25 ea, 1" to 3/4" Reducers 25 ea, 1" Combination Nozzles - 25 ea, 3/4" Nozzles - 25 ea, Hose Clamps - 3 ea, Class A Foam - 25 Gallons, 1 1/2" Combo Nozzles - 5 ea, 3/4" Wye's - 25 ea		
4	Half-Norton Hose Kit 1 1/2" Hose, 2500 Feet, 1" Hose, 1000 Feet, 3/4" Hose, 1000 Feet, 1 1/2" Gated Wye's, 12ea, 1 1/2" to 1" Reducers, 12ea, 1" to 3/4" Reducers, 12ea, 1" Combo Nozzles, 12 ea, 3/4" Nozzles, 12ea, Hose Clamps - 3 ea, Class A Foam - 10 Gallons, 1 1/2" Combo Nozzles - 2 ea, 3/4" Wye's - 12 ea		
5	Coyote Package (For a 20 Person Crew - Approx 785lbs) 50 gal Water - 12 cases, 25 gal Gatorade - 6 cases, 3 Cases of MRE's, 40ea Sack Lunches, 1 case - AA Batteries, 5 Rolls Toilet Paper, 20 Gl Gasoline, 4 Gl Bar and Chain Oil, 1/2 Box Trash Bags, 25ea Bath-In-A-Bags, 25ea Towel, Cleansing 12" x 30", 2 to 4ea Gold Bond, 40oz. 2-Cycle Mix.		
6	1000 foot hose lay kit includes the following: 10ea 100' x 1 1/2" Hose, 10ea 100' x 1" Hose, 10ea 1 1/2" Gated Wyes, 10ea 1 1/2" to 1" Reducers, 10ea 1" Nozzles		
7	2000 foot hose lay kit includes the following: 20ea 100' x 1 1/2" Hose, 20ea 100' x 1" Hose, 20ea 1 1/2" Gated Wyes, 20ea 1 1/2" to 1" Reducers, 20ea 1" Nozzles		
8	3000 foot hose lay kit includes the following: 30ea 100' x 1 1/2" Hose, 30ea 100' x 1" Hose, 30ea 1 1/2" Gated Wyes, 30ea 1 1/2" to 1" Reducers, 30ea 1" Nozzles		

CIIMT 12 Line Order Worksheet - Page 2

Item #	Description	NFES #	Quantity Requested	Item #	Description	NFES #	Quantity Requested
9	Hose (50') Garden, 3/4"	1016		34	Gas Unleaded (Gallons)		
10	Hose (100'), 1"	0966		35	Oil 2 Cycle (Pints)	0344	
11	Hose (100'), 1 1/2"	0967		36	Bar oil (Qts)	1869	
12	Nozzle, Garden, 3/4"	0136		37	Drip torch - ea	0241	
13	Nozzle, Forester, 1"	0024		38	Drip torch mix 3.5 : 1.5 (gallon)		
14	Nozzle, KK Type, 1"	1081		39	Fuses BX	0105	
15	Nozzle, KK Type, 1 1/2"	1082		40	Flare Gun Rounds (12/BX)	0687	
16	Wye, Gated, 3/4"	0739		41	Cartridge #6 purple (box)	0372	
17	Wye, Gated, 1"	0839		42	Batteries "AA" Pkg. (24/PKG)/BX	0030	
18	Wye, Gated, 1 1/2"	0883		43	Ribbon, Flagging (Specify Color)		
19	Inline Tee, 1" x 1" x 3/4"	1809		44	Water, Cubies		
20	Inline Tee 1" x 1" x 1"	2240		45	Water, Bottled, Cases		
21	Inline Tee 1 1/2" X 1"	0731		46	Gatorade		
22	Reducer 1" X 3/4"	0733		47	MRE's (12/BX)	1842	
23	Reducer 1 1/2" to 1"	0009		48	Heavy Mill Plastic	0283	
24	Increaser, 3/4" X 1"	2235		49	Washcloth, waterless, Cleansing	0206	
25	Increaser, 1" X 1 1/2"	0416		50	Wrap, Structure 54" x 300'	0881	
26	Foam 5 gal	1145		51	Sprinkler Kit		
27	Foam 4 oz (For Backpack Pump)	3400		52	Mark 3 Pump		
28	Backpack Pump	1197		53	Mark 3 Pump Kit w/10 gal Mix Fuel		
29	Pumpkin (Gallons?)			54	Chainsaw Kit	0340	
30	Porta-Tank (Gallons?)			55	Mop-Up Kit, 3-wand	0772	
31	Shovel	170		56	Pump Kit, Lightweight, 2-Cycle	0670	
32	Combi Tool	146		57	Gas, raw and 2 qts 2-Cycle Oil, ea		
33	McCloud	296		58	Lightweight Pump Kit - Cache w/5 gal fuel		
				59	Gas, raw, 1 gallon w/ 1qt 2-cycle oil, ea		

Notes:

MEDICAL PLAN (ICS 206 WF) CIIMT 12

1. Incident Name				2. Operational Period							
SHELLY INCIDENT CA-KNF-005159				Date/Time: 07/15/2024 – 07/16/2024 0700-0700							
3. EMS / Ambulance Services/Aid Stations											
Name	Location			Frequency/Phone		Advanced Life Support (ALS) Yes No					
MT. SHASTA AMBULANCE	YREKA, CA			Shelly Communications		X					
ETNA AMBULANCE	ETNA, CA			Shelly Communications		X					
MT. MEDICS Aid Station	ICP			530-859-2799		X					
4. Air Rescue / Air Ambulance Services											
Name		Phone			Type of Aircraft & Capability						
KRASSEL (N353SH)		Shelly Communications			SHORT HAUL BLS						
MERCY AIR		Shelly Communications			AIR AMBULANCE, 24 HR ALS, NO HOIST						
PHI		Shelly Communications			AIR AMBULANCE, 24 HR ALS, NO HOIST						
REACH AIR		Shelly Communications			AIR AMBULANCE, 24 HR ALS, NO HOIST						
CHP		Shelly Communications			0600-0230, ALS, DAY HOIST ONLY, NO SHORT HAUL						
COAST GUARD		Shelly Communications			24 HR HOIST, BLS ONLY						
National Guard (G841)		Shelly Communications			24 HR HOIST, ALS						
5. Hospitals (all times estimated from incident location)											
Name & Level		GPS Datum – WGS 84 Degrees Decimal Minutes		Travel Time Air Gnd		Phone		Helipad Yes No		Address	
UC DAVIS MEDICAL CENTER LEVEL 1 TRAUMA		Lat:	33°33.292'N		1.5hr	6hr	916-734-3790 ER Desk	X	2315 Stockton Blvd. Sacramento, CA 95817		
		Long:	121°27.326'W								
MERCY MEDICAL CENTER Redding LEVEL 2 TRAUMA		Lat:	40°34.325'N		40m	3hr	530-225-7200 ER Desk	X	2175 Roseline Ave. Redding, CA 96001		
		Long:	122°23.700'W								
ASANTE ROGUE REGIONALMEDICAL CENTER-LEVEL 2		Lat:	42°19.07'N		20m	2hr	541-789-7132 ER Desk	X	2825 E. Barnette Rd. Medford, OR 97504		
		Lat:	122°49.90'W								
MERCY MEDICAL CENTER Mt. Shasta LEVEL 3 TRAUMA		Lat:	41°19.111'N		30m	2hr	530-926-9360 ER Desk	X	914 Pine St. Mt. Shasta. CA 96067		
		Long:	122°19.200'W								
FAIRCHILD MEDICAL CENTER LEVEL 4 TRAUMA		Lat:	41°43.181'N		20m	1.5h	530-841-6292 ER Desk	X	444 Bruce St. Yreka, CA 96097		
		Long:	122°38.757'W								
6. Division / Crew Emergency Pre-Plan								<i>Update and discuss with assigned resources daily.</i>			
Fireline EMT / Medic's Division / Branch Location											
Air Hoist site location site: Lat: / Long: / Elevation:											
Helispot: Lat: / Long: / Elevation:											
7. Prepared By (Medical Unit Leader)				8. Date/Time		9. Reviewed By (Safety Officer)			10. Date/Time		
<i>Ron Sandler</i> MEDL				07/14/2024 1600		<i>Michael Seymour</i> SOFC			07/14/2024 1600		

MEDICAL PLAN (ICS 206 WF) CIIMT 12

Medical Incident Report																													
<p>FOR A NON-EMERGENCY INCIDENT, WORK THROUGH CHAIN OF COMMAND TO REPORT AND TRANSPORT INJURED PERSONNEL AS NECESSARY.</p> <p>FOR A MEDICAL EMERGENCY: IDENTIFY ON SCENE INCIDENT COMMANDER BY NAME AND POSITION AND ANNOUNCE "MEDICAL EMERGENCY" TO INITIATE RESPONSE FROM IMT COMMUNICATIONS/DISPATCH.</p>																													
<p>Use the following items to communicate situation to communications/dispatch.</p>																													
<p>1. CONTACT COMMUNICATIONS / DISPATCH (Verify correct frequency prior to starting report) <i>Ex: "Communications, Div. Alpha. Stand-by for Emergency Traffic."</i></p> <p>2. INCIDENT STATUS: Provide incident summary (including number of patients) and command structure. <i>Ex: "Communications, I have a Red priority patient, unconscious, struck by a falling tree. Requesting air ambulance to Forest Road 1 at (Lat./Long.) This will be the Trout Meadow Medical, IC is TFLD Jones. EMT Smith is providing medical care."</i></p>																													
Severity of Emergency / Transport Priority	<input type="checkbox"/> RED / PRIORITY 1 Life or limb threatening injury or illness. Evacuation need is IMMEDIATE <i>Ex: Unconscious, difficulty breathing, bleeding severely, 2° – 3° burns more than 4 palm sizes, heat stroke, disoriented.</i> <input type="checkbox"/> YELLOW / PRIORITY 2 Serious Injury or illness. Evacuation may be DELAYED if necessary. <i>Ex: Significant trauma, unable to walk, 2° – 3° burns not more than 1-3 palm sizes.</i> <input type="checkbox"/> GREEN / PRIORITY 3 Minor Injury or illness. Non-Emergency transport <i>Ex: Sprains, strains, minor heat-related illness.</i>																												
Nature of Injury or Illness & Mechanism of Injury			Brief Summary of Injury or Illness <i>(Ex: Unconscious, Struck by Falling Tree)</i>																										
Transport Request			Air Ambulance / Short Haul/Hoist Ground Ambulance / Other																										
Patient Location			Descriptive Location & Lat. / Long. <i>(WGS84)</i>																										
Incident Name			Geographic Name + "Medical" <i>(Ex: Trout Meadow Medical)</i>																										
On-Scene Incident Commander			Name of on-scene IC of Incident within an Incident <i>(Ex: TFLD Jones)</i>																										
Patient Care			Name of Care Provider <i>(Ex: EMT Smith)</i>																										
<p>3. INITIAL PATIENT ASSESSMENT: Complete this section for each patient as applicable (start with the most severe patient)</p> <p>Patient Assessment: See IRPG PAGE 106</p>																													
Treatment:																													
<p>4. TRANSPORT PLAN:</p> <p>Evacuation Location (if different): <i>(Descriptive Location (drop point, intersection, etc.) or Lat. / Long.)</i> Patient's ETA to Evacuation Location:</p>																													
Helispot / Extraction Site Size and Hazards:																													
<p>5. ADDITIONAL RESOURCES / EQUIPMENT NEEDS:</p> <p><i>Example: Paramedic/EMT, Crews, Immobilization Devices, AED, Oxygen, Trauma Bag, IV/Fluid(s), Splints, Rope rescue, Wheeled litter, HAZMAT, Extrication :</i></p>																													
<p>6. COMMUNICATIONS: Identify State Air/Ground EMS Frequencies and Hospital Contacts as applicable</p> <table border="1" style="width: 100%; border-collapse: collapse;"> <thead> <tr> <th style="width: 15%;">Function</th> <th style="width: 25%;">Channel Name/Number</th> <th style="width: 15%;">Receive (RX)</th> <th style="width: 15%;">Tone/NAC *</th> <th style="width: 15%;">Transmit (TX)</th> <th style="width: 15%;">Tone/NAC *</th> </tr> </thead> <tbody> <tr> <td>COMMAND</td> <td></td> <td></td> <td></td> <td></td> <td></td> </tr> <tr> <td>AIR-TO-GRND</td> <td></td> <td></td> <td></td> <td></td> <td></td> </tr> <tr> <td>TACTICAL</td> <td></td> <td></td> <td></td> <td></td> <td></td> </tr> </tbody> </table>						Function	Channel Name/Number	Receive (RX)	Tone/NAC *	Transmit (TX)	Tone/NAC *	COMMAND						AIR-TO-GRND						TACTICAL					
Function	Channel Name/Number	Receive (RX)	Tone/NAC *	Transmit (TX)	Tone/NAC *																								
COMMAND																													
AIR-TO-GRND																													
TACTICAL																													
<p>7. CONTINGENCY: Considerations: If primary options fail, what actions can be implemented in conjunction with primary evacuation method? Be thinking ahead. .</p>																													
<p>8. ADDITIONAL INFORMATION: Updates/Changes, etc. .</p>																													
<p>REMEMBER: Confirm ETA's of resources ordered. Act according to your level of training. Be Alert. Keep Calm. Think Clearly. Act Decisively. .</p>																													